



INFORM
THE
FUTURE

CHOOSE SOUTHAMPTON



Top 100

global university*



Top 20

UK university**



Top 10

in the UK for
research intensity***



Ranked 7th

in the UK for
research impact***



World

top 100

and UK top 15 for
Education****



Home to three
world-class
research centres

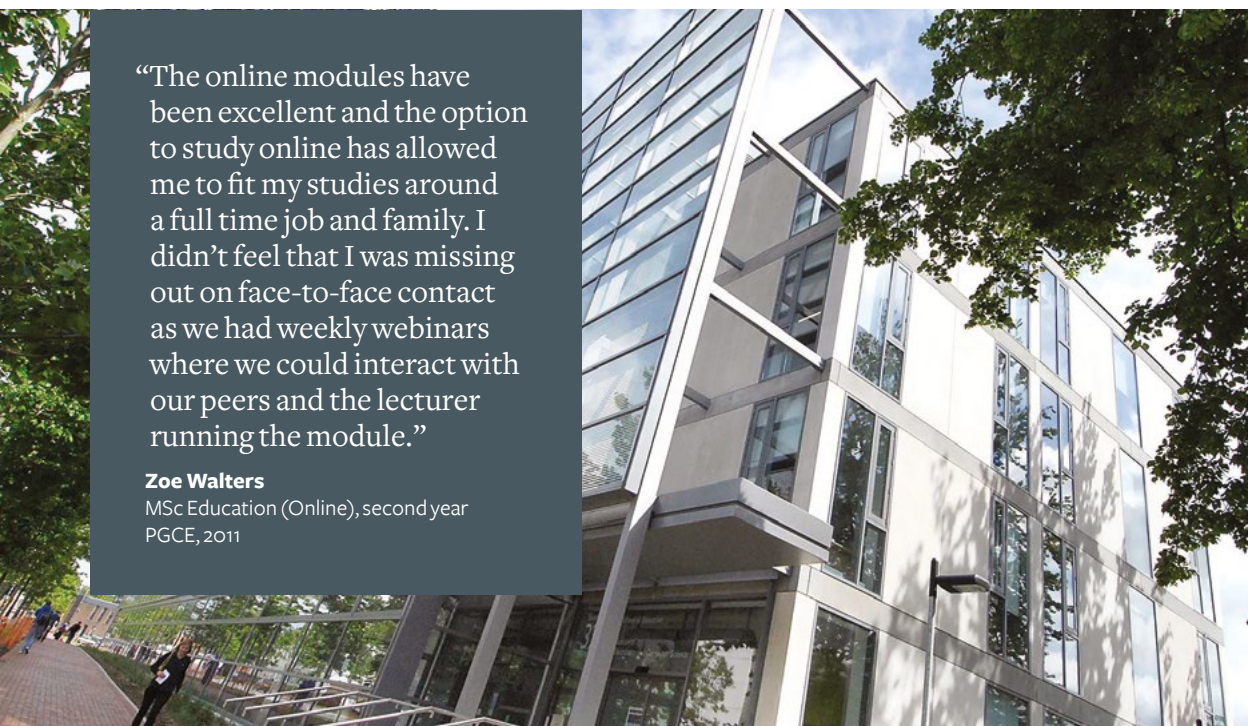
*QS World University Rankings, 2020 ** Complete University Guide, 2020 *** Latest REF, 2014

**** QS World University Rankings by Subject, 2019

“The online modules have been excellent and the option to study online has allowed me to fit my studies around a full time job and family. I didn’t feel that I was missing out on face-to-face contact as we had weekly webinars where we could interact with our peers and the lecturer running the module.”

Zoe Walters

MSc Education (Online), second year
PGCE, 2011



RESEARCH EXCELLENCE

Southampton Education School's Institute for Equity and Effectiveness in Education (IE₃) is one of the country's leading institutes for education research. We were ranked 7 out of 76 in the country for research intensity in the latest UK government assessment of university research quality - REF (2014).

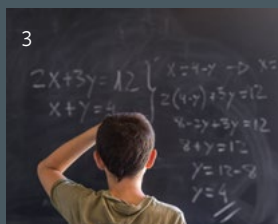
Our academics carry out world-leading research in the areas of Inclusion; Mathematics, Science, and Health education; and Educational Effectiveness. We aim to make a real difference to the profession through collaborating with a range of partners.

We have research expertise in:

- Educational assessment and effectiveness
- Educational psychology
- Inclusive and participatory methodologies
- Feedback and self-regulation in Higher Education
- Health and wellbeing education interventions
- Digital technologies for learning
- Learning and teaching of Maths and Science
- School leadership and management
- Special educational needs, disability, and educational inclusion
- International contexts and cultures
- Sociology of work and lifelong learning



The LifeLab initiative enables school students to learn about the science behind their own health and the health of future children, through an interactive purpose-built lab at Southampton General Hospital



We are rekindling the iconic 1960's School Mathematics Project, which aimed to transform the teaching of Maths, to learn from and build on this seminal work



7th

Southampton Education School is ranked 7th in the UK for research impact (latest REF, 2014)



The Centre for Research in Inclusion (CRI) is carrying out internationally significant research that will develop understanding and support the inclusion of, children, adults, families, and practitioners in education

Home to three research centres in: Mathematics, Science and Health Education; Inclusion; and Leadership, Educational Effectiveness & Policy (LEEP)

1 Students working in the LifeLab

2 Centre for Research in Inclusion

3 Transforming mathematics teaching

TAUGHT PROGRAMMES

Key facts

Unless otherwise stated

Entry requirements: a UK bachelors degree with upper-second class honours or higher, and ideally work experience in a related field. See international equivalent qualifications www.southampton.ac.uk/pg/entry

English language: band C, IELTS 6.5 overall, with a minimum of 6.0 in all components. For more information, visit www.southampton.ac.uk/pg/el

Assessment: assignments and dissertation

Duration: one year (full time), two years (part time)

Start date: September

Applying: University online application form with transcripts, references and personal statement

Closing date: 31 July; early applications are encouraged

Fees: www.southampton.ac.uk/pg/funding

Our wide selection of postgraduate courses combine excellence in teaching and the opportunity to experience world-leading research as it happens, in a high-calibre learning environment.

MSc Education Practice and Innovation

Programme Director:
Dr Andri Christodoulou

This programme focuses on research, policy and theoretical perspectives of innovative practices and inclusive approaches to teaching and learning. Students will be able to critically engage with current issues in education theory, practice and research, gain an overview of current and potential developments to support teaching and learning and have opportunities to critically review innovative and inclusive practices in education.

Whilst studying with us you will learn about key topics such as: Investigating Innovations in Teaching and Learning and Inclusive Practices in Education.

MSc Education (online)

Programme Director:
Dr Vasilis Strogilos

The MSc Education (online) is a flexible and innovative part-time course for education professionals that focuses on teaching, leadership and research in education. You will critically review emerging teaching practices and reflect on your own practice, whilst being introduced to the major theories, practices and issues surrounding the management of education.

Whilst studying with us you will learn about key topics such as: Making Sense of Education Research and Effective Teaching & Learning.

MSc Education

Programme Director:
Dr Andri Christodoulou

MSc Education allows you to research and develop more effective practice across a wide range of areas within education. We provide opportunities for critical engagement with current issues related to education theory, policy and research within national, international and global contexts, as well as opportunities to examine education theory and practice at institutional and classroom level.

Whilst studying with us you will learn about key topics such as: Understanding Education Research, and Teaching and Learning.

MSc Education Management and Leadership

Programme Director:
Dr Andri Christodoulou

MSc Education Management and Leadership allows you to blend theories of management and organisational structures with critical insights from contemporary research into leadership in education. The programme brings together the best in professional knowledge, cutting-edge research and evidence informed practice, to develop your skills in the fast-changing landscape of education.

Whilst studying with us you will learn about key topics such as: Leadership in Education and Management in Education Organisations.



Find out more:

www.southampton.ac.uk/education-pg

Or to have specific questions answered:

T: +44 (0)23 8059 4393

E: enquiry@southampton.ac.uk

TEACHER TRAINING

Key facts

Unless otherwise stated

Entry requirements: a UK bachelors degree, with GCSEs (or equivalent) in English language and mathematics (plus science for Primary PGCE) at grades A*-C/9-4, a clear (or approved) enhanced Disclosure and Barring Service check and a satisfactory health check. See international equivalent qualifications www.southampton.ac.uk/pg/entry

English language: band C, IELTS 6.5 overall, with a minimum of 6.0 in all components. For more information, visit www.southampton.ac.uk/pg/el

Assessment: school placement observation, assignments

Duration: PGCE Primary and Secondary: one year (full time), PGCE FE: usually one year (full time), SKE: 12 weeks (full time, blended learning)

Start date: PGCE: September. SKE: Online: October; face to face: June/July

Applying: Apply through UCAS, PGCE FE can apply direct FEAdmissions@soton.ac.uk

Closing date: 31 July; early applications are encouraged

Fees: www.southampton.ac.uk/pg/funding



Find out more:

www.southampton.ac.uk/learntoteach

Or to have specific questions answered:

T: +44 (0)23 8059 3473

E: ITTadmissions@southampton.ac.uk

E: FEadmissions@southampton.ac.uk

We offer a range of courses that will allow you to train to teach or extend your subject knowledge, whilst working with internationally respected academics who all have extensive school teaching experience.

PGCE Primary

Programme Director:
Ian Campton

Our Primary PGCE courses, general primary and with maths specialism, will enable you to become an informed, reflective and confident professional. Our PGCE programme prepares you thoroughly to teach children across the primary age range, through a careful integration of University and school-based learning which draws on the expertise of University academics and our partner schools. You will learn how to plan, teach, assess and how to manage a classroom. You will also be informed of current policy and initiatives within education. Additionally, our master's level accreditation provides a valuable first step towards a masters degree.

Whilst studying with us you will learn about key topics such as: Subject Knowledge; Principles of Pedagogy; Professional Values; Introduction to Teaching; Understanding Teaching; Being the Teacher.

PGCE Secondary

Programme Director:
Rachele Morse

Our PGCE Secondary courses provide an excellent route into teaching, covering a broad range of National Curriculum subject areas for the secondary age range. You will learn how to plan, teach and assess and how to organise and manage a classroom. Four days per week is spent on placement in one of our 140+ partner schools across Hampshire, Dorset and Wiltshire, under the guidance of curriculum mentors who are all experienced classroom teachers. One day per week is spent at the University, under the guidance of curriculum tutors, who all have extensive school teaching experience.

Whilst studying with us you will learn about key topics such as: Subject Knowledge; Principles of Pedagogy; Professional Values; Introduction to Teaching; Understanding Teaching; Being the Teacher.

PGCE FE Learning and Skills

Programme Director:
Dr Pauline Dixey

The PGCE FE course prepares you to teach a wide range of academic and vocational subjects in colleges, sixth form and adult training environments. You will develop skills in behaviour management, planning, delivering and assessing learning activities. You will also learn key theories of teaching and learning and policy context of post-compulsory education and training. The required attendance for this course is four days per week. Usually three days will be spent at a local college and one day at University.

Whilst studying with us you will learn about key topics such as: Principles of Pedagogy; Professional Values; Understanding Teaching; Being the Teacher; Foundation to Effective Teaching and Learning in Post-Compulsory Education and Training.

Subject Knowledge Enhancement

Programme Director:
Rachele Morse

Our Subject Knowledge Enhancement (SKE) courses are for graduates who need to develop a greater depth of subject understanding prior to training for qualified teacher status. These intensive programmes in Computer Science, Mathematics and Science will begin to equip you with the necessary skills and subject knowledge to teach your subject across the 11-16 age range. Successful completion would lead to entry to PGCE the following September.

RESEARCH PROGRAMMES

Key facts

Unless otherwise stated

Entry requirements: PhD

Education: a UK bachelors degree with upper second-class honours and a Master of Science/Art in a relevant subject, plus research proposal and satisfactory performance at interview. **PhD (Integrated) in Education:** UK bachelors degree with upper second-class honours, plus research proposal and satisfactory performance at interview. See international equivalent qualifications www.southampton.ac.uk/pg/entry

English language: band C, IELTS 6.5 overall, with a minimum of 6.0 in all components. For more information, visit www.southampton.ac.uk/pg/el

Assessment: written reports, annual reports, presentation, confirmation (interim thesis), final thesis and viva voce

Applying: University application form, transcripts, two references, personal statement and research proposal

Closing date: PhD: none, but apply by early January to be considered for funding. **PhD (Integrated) in Education:** August

Fees and funding: www.southampton.ac.uk/pg/funding



Find out more:

www.southampton.ac.uk/education-pg

Or to have specific questions answered:

T: +44 (0)23 8059 5699

E: enquiry@southampton.ac.uk

Southampton Education School is home to cutting-edge research and internationally respected academics, providing you with an exhilarating and challenging learning environment.

PhD Education

Programme Director:
Dr Michaela Brockmann

A PhD in Education allows motivated individuals to pursue an area of interest within the broad research fields that comprise the discipline of education. These should align with the research interests and expertise of Education School staff at the University. (Visit www.southampton.ac.uk/education/research to find out more). This will ensure that you work with supervisors who are active researchers with expertise in your area of interest. You will focus on the planning, development, data collection and analysis associated with your research project, and the writing and presentation of your thesis.

During the PhD you may also participate in research training designed to provide you with opportunities to develop and enhance your existing research skills. Education at Southampton is part of a Doctoral Training Partnership approved by the ESRC, which provides additional research training opportunities.

Duration: two to four years (full time), up to seven years (part time)

Start date: Variable start times possible

PhD (Integrated) in Education

Programme Director:
Dr Michaela Brockmann

The integrated PhD is ideally suited to students who need to strengthen their research skills and their research proposal, before embarking on a PhD thesis. This programme integrates seminars, workshops and lectures during the first 12-18 months to help develop and strengthen your research proposal. You will also write and present a research report related to a

key aspect of your proposed research as part of a project-based module to support the transition to the PhD research and thesis phase.

Alongside the development of your research skills, you will learn about key topics within Education through opportunities to study some of the modules that make up our MSc Education and MA Ed programmes.

On successful completion of this initial phase you will develop your knowledge through further critical engagement with research literature. You will then commence work on your proposed research, leading to data collection, data analysis and writing and presentation of your thesis. You will receive support from a supervisory team with specialist expertise in your area.

Duration: five years (full time), nine years (part time)

Start date: October

PhD research projects

We're looking for the pioneers of the future to join our vibrant research team. Current PhD research areas include:

- Communication between autistic students and staff in UK secondary schools
- Support for parents of young children with learning disabilities
- Multi-level analysis on effective education in low-resource countries
- Gendered discourse in further education: managerial language and professional identity
- Collaborative action research on questions in primary science
- Effectiveness of primary maths teaching in England and China

GLOBAL IMPACT

The research and education carried out at Southampton Education School impacts on important global issues, developing the policy and practice of education across the world.

Our international research has looked at the role curriculum and textbooks play in the learning and teaching of mathematics. With projects in Japan and Hong Kong, for example, we have done curriculum comparisons and created digital mathematics books for geometry. With the archives of the seminal School Mathematics Project back at our University, we are a key centre for mathematics textbook research. The results of this research underpin developmental work with India and Indonesia to create low-cost, high-quality resources for mathematics education.

We also champion the promotion of inclusion in schools across a range of countries such as Austria, Denmark, England, Portugal and Spain. The impact of this body of work has focused on an innovative strategy for helping teachers respond positively to learner diversity by placing the emphasis on listening to the views of students, and working collaboratively with students and teachers in schools to develop inclusive thinking and practices.

The School of Education also supports a culture that engages and challenges students to understand and meet global needs. For instance, each year our PGCE students have the opportunity to gain experiences of teaching in Kenya, to better understand the impact of factors such as a lack of classroom resources, working with limited facilities and understanding the challenges that students face outside of school.

We provide international continuing professional development for teachers and senior leaders in India and Hong Kong. We have focused on Principles of Effective Teaching and Educational Management as well as Assessment.

HOW DO I APPLY?

Before applying for postgraduate study, you should:

- check you meet the entry requirements
- if applicable, ensure that you meet any special requirements for international students
- identify how you will fund your postgraduate study
- obtain supporting documentation to include as part of your application

APPLY NOW

Apply to Southampton for postgraduate taught degrees and for more information on PhD opportunities



Find out more:

[www.southampton.ac.uk/
education-pg](http://www.southampton.ac.uk/education-pg)



Find out more:

[www.southampton.ac.uk/
education-pg](http://www.southampton.ac.uk/education-pg)

UK enquiries:

enquiry@southampton.ac.uk

+44 (0)23 8059 9699

International and EU enquiries:

international@southampton.ac.uk

+44 (0)23 8059 9699



Disclaimer

This document is for information purposes only and is prepared well in advance of publication. While the University of Southampton uses all reasonable efforts to ensure that all statements, information and data contained in this document are accurate as at the date of publication, it reserves the right to make revisions or modifications to such statements, information or data at any time and without notice. Under no circumstances shall the University be liable for any reliance by the reader on any information in this document.

© University of Southampton 2019

This document can be made available, on request, in alternative formats such as electronic, large print, Braille or audio tape, and in some cases, other languages.



When finished with this document please recycle it.