

UNIVERSITY OF  
Southampton

YOU'LL BE  
MADE HERE

UNIVERSITY OF SOUTHAMPTON  
INTERNATIONAL STUDENT GUIDE 2020

FOUNDING MEMBER  
OF THE  
**RUSSELL  
GROUP**

# CHOOSE SOUTHAMPTON

NATIONAL  
OCEANOGRAPHY CENTRE  
SOUTHAMPTON (NOCS)

BOLDREWOOD  
INNOVATION  
CAMPUS

WINCHESTER  
SCHOOL OF ART

UNIVERSITY HOSPITAL  
SOUTHAMPTON NHS  
FOUNDATION TRUST (UHS)

AVENUE  
CAMPUS

HIGHFIELD  
CAMPUS



**Top 100**

Global University\*



**Top 20**

UK University\*\*



**Top 150**

institution for  
employability (worldwide)\*\*\*

\*QS World University Rankings 2019

\*\* The Complete University Guide 2019,  
The Sunday Times Good University Guide 2019

\*\*\* QS Graduate employability rankings, 2018

# YOU'LL BE MADE HERE

**We offer bachelor, masters and PhD courses. Our foundation year and pre-masters courses can help prepare you for academic study in the UK. Our academic specialisms include:**

Accounting and Finance	Electronics and Computer Science	Modern Languages
Acoustical Engineering	Energy	Music
Aeronautics and Astronautics	English and Linguistics	Natural Sciences
Ageing/Gerontology	Environmental Sciences	Ocean and Earth Science
Archaeology	Film	Optoelectronics
Art, Fashion and Design	Geography and Environment	Philosophy
Audiology	Health Sciences and Nursing	Physics and Astronomy
Biological Sciences	History	Politics and International Relations
Business and Management	Law	Psychology
Chemistry	Marketing	Ship Science
Civil Engineering	Mathematical and Actuarial Sciences	Social Statistics and Demography
Economics	Mechanical Engineering	Sociology, Social Policy and Criminology
Education	Medicine	

## **Foundation Years:**

- International Foundation Year
- Engineering/Physics/Maths/Geophysics Foundation Year
- Science Foundation Year

## - Pre-Masters

The Pre-Masters programme will help you to get the most out of your taught Masters degree at the University of Southampton by providing you with the academic and English language skills needed.



**More**  
**student clubs**  
than any other UK  
university



**Award winning**  
**careers service**



**Global #1**  
University  
Business Incubator\*



**Find out more:**  
[www.southampton.ac.uk/courses](http://www.southampton.ac.uk/courses)

*\*Source: Founding partner of SETSquared, ranked the number one university-based business incubator in the world by UBI Global*

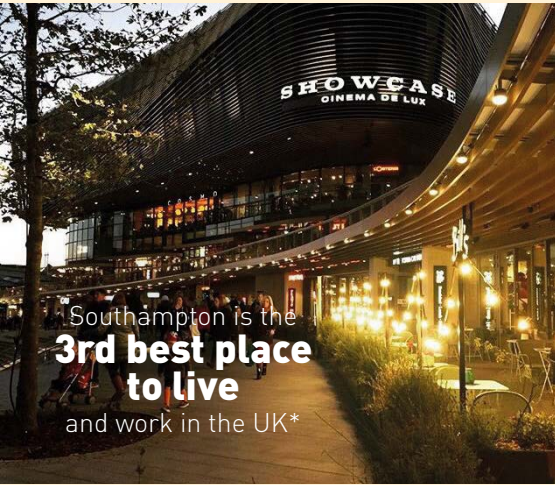


Dive in and watch our city hyperlapse video.

Search for: **Our Incredible City | University of Southampton**



**YOUKU** 优酷



Southampton is the  
**3rd best place  
to live**  
and work in the UK\*



Winchester is the  
**happiest place  
to live**  
in the UK\*\*



- 01 Ocean Village
- 02 Westquay Watermark
- 03 Winchester Cathedral
- Images by current students from Instagram**
- 04 Highfield Campus in the spring<sup>1</sup>
- 05 Southampton's waterfront<sup>2</sup>
- 06 Southampton Pride<sup>3</sup>

## Southampton and Winchester

Just 10 minutes apart by train, Southampton and Winchester are two prime cities on the south coast of the UK. Winchester, home to the Winchester School of Art (WSA), is steeped in history and Southampton combines an ancient past with thriving modern developments.

\*Source: Latest Good Growth for Cities Index, 2017, DEMOS-PwC

\*\*Source: Royal Mail UK Happiness Index 2019.

<sup>1</sup> By Instagram user @ayahsoufan

<sup>2</sup> By Instagram user @ygao317

<sup>3</sup> By Instagram user @miaoasu

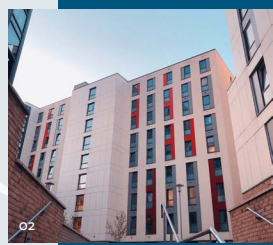


**SOUTHAMPTON**

# University of Southampton



- 01 Mayflower Halls<sup>1</sup>
- 02 Mayflower Halls<sup>2</sup>



## Accommodation

Choose accommodation to fit your requirements in either purpose built student accommodation (halls) or in a privately rented house or flat. Halls have **24 hour security** and support services and **WiFi** in all rooms. Halls in Southampton include the **UniLink bus pass** for convenient travel around the city.

[www.southampton.ac.uk/accommodation](http://www.southampton.ac.uk/accommodation)

## Accommodation Guarantee

The University guarantees a place in halls for unaccompanied students at UK campuses\*



Student classification	Level of study	Accommodation is guaranteed* for
International (non UK/EU)	Undergraduate	Full duration of studies
International (non UK/EU)	Postgraduate	First year
European Union (EU)	Undergraduate	First year

\*Subject to terms and conditions

<sup>1,2</sup> Images by Instagram user and current student @micky\_zhang25

# FEES AND FUNDING

- **Fixed fees** for International students for the duration of your course
- **Scholarships and funding opportunities available** from the University, external programmes and government schemes.
- **Loans** for UK/EU students for tuition fees and living costs
- **Visa support** available through our dedicated VISAS team
- **Our university accommodation** (based on 2019/2020 fees) can cost approximately between:
  - £112.35 - £206.50 per week for individuals, £216.16 - £320.46 per week for families and couples
- Allow at least £1,015 a month for living expenses (UKVI guidance, August 2019)

Programme	UK/ EU (per year)	International fee (per year)
<b>Foundation- Full time fees, UK Campuses</b>		
International Foundation Year	£9,250	£17,560
Science Foundation Year	£9,250	£18,852
Engineering, Physics, Maths and Geophysics Foundation Year	£9,250	£18,852
<b>Undergraduate (Bachelors) - Full time fees, UK Campuses</b>		
All programmes in Arts and Humanities, Social Sciences and Southampton Business School	£9,250	£17,560
All programmes in Engineering & Physical Sciences, and Environmental & Life Sciences excluding Allied Health Professions	£9,250	£21,580
Occupational Therapy and Podiatry	£9,250	£23,335
Physiotherapy	£9,250	£23,645
Medicine	£9,250	Please see our website
<b>Postgraduate Taught (Masters) - Full time fees, UK Campuses</b>		
Classroom based including PGCE	£9,250	£18,812
Engineering and Physical Sciences - Laboratory based	£9,250	£23,136 or £25,450
Environmental and Life Sciences - Laboratory based	£9,250	£21,800, £22,268, £23,136, £23,400, £25,250 or £25,910 dependent on programme.
MBA	£24,000	£24,936
Southampton Business School Masters	£11,950 or £12,950	£20,728 or £22,806
<b>Postgraduate Research (PhD) - Full time fees, UK Campuses</b>		
Classroom based	£4,327 (2019/20*)	£17,064 (2020/21**)
Laboratory based	£4,327 (2019/20*)	£23,364 (2020/21**)

**Please note:** All figures quoted in this section are for 2020 entry (unless otherwise stated) and are correct at time of printing and may be subject to change. Fees for some programmes may vary. Part time fees for applicable programmes are listed on our website. please check our website to confirm fees prior to applying: [www.southampton.ac.uk/fees](http://www.southampton.ac.uk/fees)

\*UK/EU postgraduate research fees for academic year 2020/21 will increase in line with the Research UK annual fees. We expect these to be announced in Spring 2020 and will be communicated on: [www.southampton.ac.uk/pgrfees](http://www.southampton.ac.uk/pgrfees)

\*\*International students commencing a research programme or part-time taught course of study in 2020/21 academic year will pay the same respective fixed fee for each year of their programme.

“It is very encouraging to arrive and discover how **welcoming** Southampton is. I love its **multicultural essence** and that I can relax surrounded by **green areas** all around the campus and city. It is also a very **well-connected place** so I can easily fly to Europe or go to another UK city at the weekend.”

**Stéphanie Rabasa**  
MSc Digital Marketing  
Swiss Italian Peruvian  
Santander and Southampton  
Business School Scholar

“After having spent time studying at different universities, here at Southampton, in the pursuit of wisdom, I found **friends that nurtured** this longing for truth and allowed the **seeds of curiosity** to blossom. And for that I’m ever grateful.”

**Shoaib Shaikh**  
BA Philosophy with Year Abroad  
Indian Omani

Stéphanie (left) and Shoaib (right) relaxing in Valley Gardens on campus, also known as our Secret Garden



## Find out more:

[www.southampton.ac.uk/international](http://www.southampton.ac.uk/international)

International student enquiries:  
[international@southampton.ac.uk](mailto:international@southampton.ac.uk)

UK and EU student enquiries:  
[enquiries@southampton.ac.uk](mailto:enquiries@southampton.ac.uk)  
+44 (0)23 8059 9699



@UosInternationalOffice



@UniSotonIntl



@UoS.International



UoSOUTHAMPTON



UoSInternational



uosinternational



sotoncomms



unisouthampton



University of Southampton



+442380 000512