



University of Essex

WELCOME

HOME

International Prospectus 2021

CONTENTS

Our facilities	4-5
Colchester campus	6-9
Southend campus	10-13
Accommodation	14-15
Fees and scholarships	16-17
Careers	18-21
Student support	22-23
We are Essex	24-25
Our Students' Union	26-27
Our European Networks	28-29
How to apply	30-32
Our courses	33-43
Contact details and important information	44-45



OUR GREAT LOCATION



OUR CAMPUSES

- C** Colchester
- S** Southend
- L** Loughton



This is us according to the rankings

RANKED 4TH

in the UK for international outlook

(Times Higher Education World University Rankings 2018)

25TH IN THE UK

for research quality

(Times Good University Guide 2020)

RATED GOLD

in the latest Teaching Excellence Framework

2017

FACILITIES

Our campuses are growing. Here's a snapshot of what they offer. We are ranked 4th in the Times Good University Guide 2020 for spend on services and facilities per student, and we are committed to continue to invest in your campus experience.



Essex Sport Arena

- Our **Essex Sport Arena** has 1,655 seats and international standard facilities suitable for staging televised sporting events. The Arena contains eight badminton courts, three basketball courts, three netball courts, five volleyball courts and two futsal courts. The Sport Centre next door houses a modern gym, fitness studios and even a climbing wall.
- The **Lakeside Theatre** on our Colchester Campus, the **Corbett Theatre** in Loughton, and the **Cliffdown Theatre** in Southend showcase student and professional productions. Whether you're a keen actor, interested in production, or just enjoy an evening at the theatre this provides an excellent creative space for students with an interest in the arts.

- Reflecting our commitment to responsible business practice in both teaching and research, **Essex Business School** in Colchester is a zero carbon building. It features a winter garden, café and lots of breakout spaces for post-lecture discussions.
- The **Forum Learning Hub** in Southend is open 24 hours a day and offers a range of diverse spaces for study and group work. In the Forum you'll also find our large lecture theatre, a café and our friendly support services all under one roof.
- The **Silberrad Student Centre** offers 24/7 access to a combination of IT-rich areas and study pods for group work. The Centre is also home to our Student Services Hub – your one-stop-shop for finance and support services.

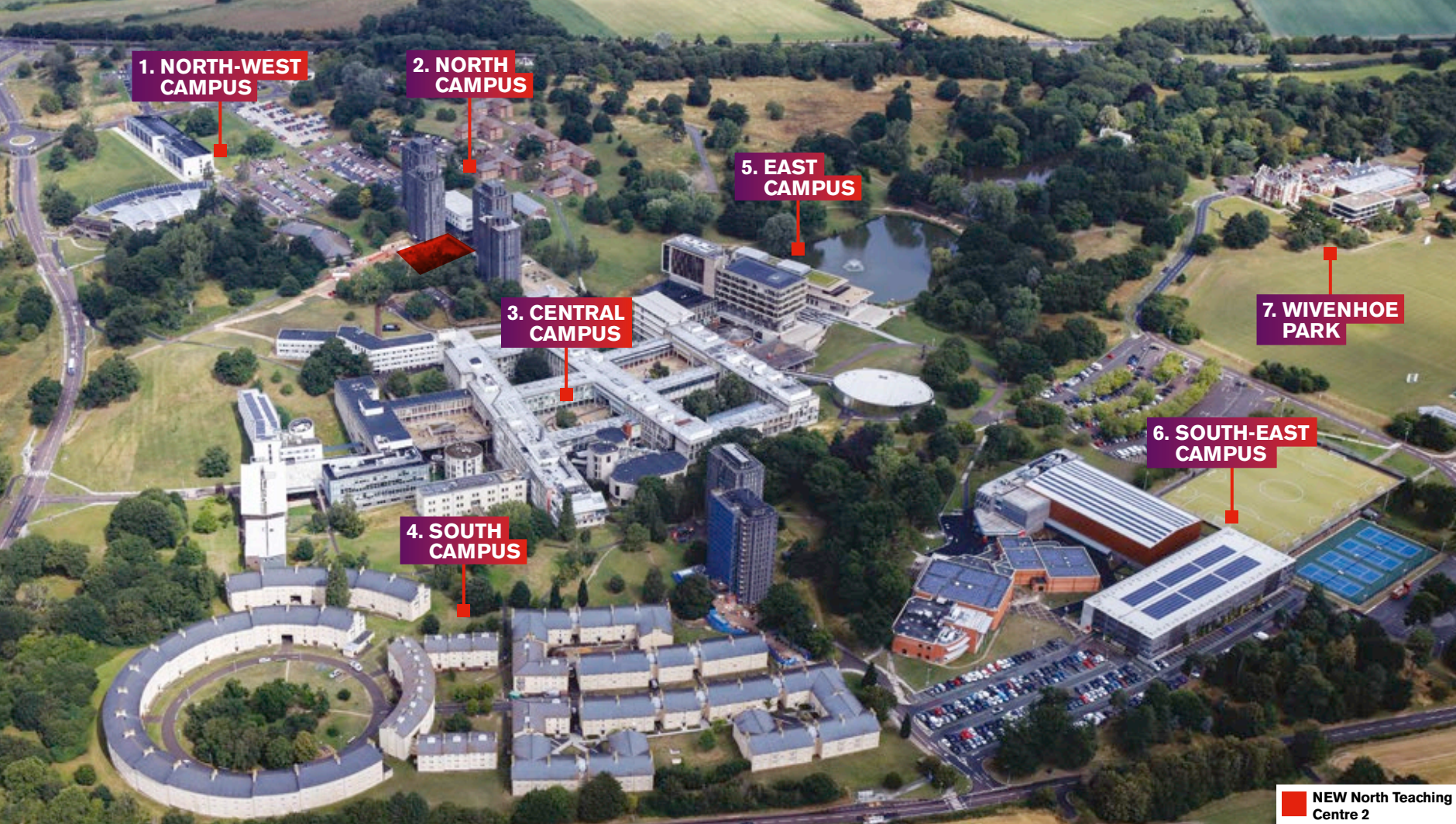


Essex Business School



STEM Centre

- The **STEM Centre** on our Colchester campus includes a 180-seat wet lab for our School of Life Sciences and a 150-seat IT-rich exploratory learning space to enable collaboration between students across our Faculty of Science and Health.
- The **Forum library** in Southend is a vibrant contemporary space with outstanding learning facilities and a central location. **Albert Sloman library** in Colchester houses some of the UK's finest collections, providing fascinating insight into Latin America, Russia and Eastern Europe.
- We have one of the world's leading **robotics research facilities**, housing robotic wheelchairs, spiders, dogs, football players, fish and robotic aircraft, which you can often see flying around the arena!



OUR COLCHESTER CAMPUS

1. NORTH-WEST CAMPUS

- University Quays accommodation
- The Meadows accommodation
- The Copse accommodation
- Essex Business School
- Day Nursery
- Knowledge Gateway
- Innovation Centre

2. NORTH CAMPUS

- North Towers accommodation
- The Houses accommodation
- Wolfson Court accommodation

- Health Centre
- Tony Rich Teaching Centre
- The North Teaching Centre
- The North Teaching Centre 2

3. CENTRAL CAMPUS

- Lecture Theatre Building
- Academic departments
- Lecture and seminar rooms
- Students' Union
- Bars, cafés and restaurants
- Shops, bank and Post Office

4. SOUTH CAMPUS

- South Towers accommodation
- South Courts accommodation
- STEM Centre

5. EAST CAMPUS

- Ivor Crewe Lecture Hall
- Silberrad Student Centre and SU Creative Studios
- Albert Sloman Library
- Lakeside Theatre and Café
- Waterstones bookshop
- Parkland and lakes

6. SOUTH-EAST CAMPUS

- Essex Sport Arena
- Sports Centre and Gym
- Synthetic turf pitch
- Tennis courts

7. WIVENHOE PARK

- Wivenhoe House Hotel
- Edge Hotel School
- Essex Collection of Art from Latin America (ESCALA)
- Campus allotment
- Sports pitches and parkland
- University of Essex International College

■ NEW North Teaching Centre 2

Diverse and cosmopolitan with a population of around 180,000 people, Colchester is a great student town, offering a rich mix of bars, restaurants, theatres and music venues. It is also the oldest recorded town in Britain with evidence of Roman settlements found all around town. Our campus is located just outside of town and offers extensive facilities as well as support services to ensure you achieve the most from your studies.



SHOPPING, FOOD AND NIGHTLIFE

Colchester's Culver Square and Lion Walk are home to a fantastic range of familiar shops and high-street fashion. What makes our town really distinctive are all of the specialist and unique shops on offer. Stroll down Sir Isaac's Walk or Eld Lane, two of the quirkiest streets in the town centre, and you'll find a mixture of retro clothing boutiques, old-school sweet shops, tea rooms, jewellers, and independent health food stores. You can also find everything from American candy to Korean noodles and Russian delicacies in and around the town centre.

There's a wide range of restaurants with student-friendly prices offering local and international cuisines.

Colchester also has a great selection of bars, pubs, cafés, nightclubs, visual and performing arts and live music venues to cater for all tastes.

On campus, you'll find a range of food options, with a great selection of halal, vegan and vegetarian dishes and groceries available, as well as a range of entertainment options.



TRAVEL

Colchester has great travel connections for both the UK and abroad. We're an hour away from London Stansted Airport which offers low-cost flights to many European and Middle East destinations, and London's other airports are also easily accessible by public transport. Travelling in the UK is easy with London and its connections only an hour away by train.

THINGS TO SEE AND DO

The Colchester Castle and its museum offer a great introduction to the town's Roman and Norman history. Mersea Island less than an hour from campus offers some of the tastiest seafood around, including the famous Mersea oysters.

Colchester Zoo is home to a huge range of species and offers a great day out close to the town centre.

“Essex was the perfect choice for me as Colchester is only a 50-minute train ride from the centre of London and an hour from Stansted airport, where I can get a flight directly to my hometown. Another influential reason for choosing Essex is because it is a campus university and has everything I need on site.”

Effie Lunde, BSc Management and Marketing student, Sandefjord, Norway



SOUTHEND CAMPIUS

1. THE FORUM

- 24/7 access to The Learning Hub
- Student Services
- Public and academic library
- Lecture and seminar rooms

2. THE GATEWAY BUILDING

- Academic departments
- In-house doctor and dentist
- Lecture and seminar rooms
- Students' Union lounge

3. SOUTHEND CENTRAL STATION

- Lovely Leigh-on-Sea is just a few stops away, and there are frequent, direct trains to London, as well as Lakeside shopping centre

4. UNIVERSITY SQUARE ACCOMMODATION

- 497 rooms and 64 studio flats
- Supermarket
- International shops

5. HIGH STREET

- Cinema
- Cafés and restaurants
- Post Office
- Chain stores and independent shops

6. SOUTHEND VICTORIA STATION

- Frequent links to Colchester, London and Southend Airport for flights across Europe

7. CLIFFTOWN THEATRE

- Home to the East 15 Acting School
- Prittlewell Square Gardens
- The Railway Hotel music venue

8. SEAFRONT

- Southend Pier
- Adventure Island amusement park
- Beach and promenade

A traditional British holiday destination, Southend-on-Sea has evolved into a thriving cultural centre of music, theatre, comedy and cuisine – whilst retaining all the charm you’d expect from a traditional English seaside town. Our campus is located in the heart of the town and surrounded by all of its facilities.



SPORTS, ARTS AND LEISURE

If you like to be active you can take advantage of Southend's great location with sailing, windsurfing, jet skiing and canoeing all available on the seafront. There is a thriving live music and arts scene, with two theatres, numerous art galleries, and festivals throughout the year. If food is your thing, you are spoilt for choice with hundreds of places to dine in town, from independent Portuguese and Thai restaurants to popular franchise outlets.



OUR CAMPUS

Our Southend Campus offers contemporary learning and teaching spaces. The Forum building has an in-house library, gallery and café. It also houses our Learning Hub, plus all of our student support services in one convenient place.

Our Learning Hub is open 24 hours a day. From quiet reading spaces to technology-driven group working pods, there are a range of diverse spaces, each dedicated to a different style of learning and studying. The Gateway Building houses a doctor's practice, a dental practice and our Faith Centre.

The Students' Union organises and facilitates an array of activities and sports in Southend, from yoga lessons to nights out in town. You can also enjoy the SU Lounge venue, with comfortable sofas, game consoles and board games to keep you entertained.

LOCATION

Southend-on-Sea's location means there's plenty to see and do. Well-known attractions abound, from Adventure Island amusement park and arcades to the famous Rossi ice-cream parlour.

Southend is also a great gateway: London is just 50 minutes away by train, while London Southend Airport is only three miles from campus, offering budget flights to a range of European destinations.

“During my time here, Southend has offered opportunities to learn and excel academically and professionally – as well as a great student experience. With a small and diverse student community of just over 1,300 students it is easy to get to know each other, access support services and meet with your academics. Throughout the year we have BBQs, parties, fireworks, cultural celebrations, live entertainment, inspirational guest speakers and competitions. Without any doubt, I’d recommend Southend as your place of study.”

Ernest Nyarko, previously Students' Union Vice-President Southend

ACCOMMODATION

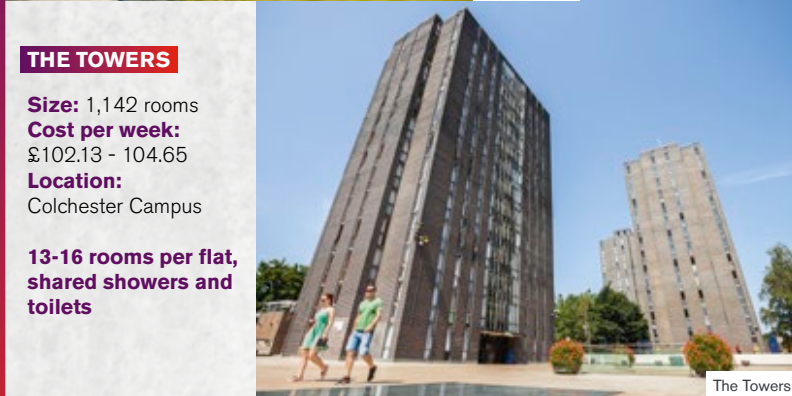


South Courts

SOUTH COURTS

Size: 1,218 rooms
Cost per week: £155.61 - 161.00
Location: Colchester Campus

4-12 rooms per flat, en suite facilities, some adapted rooms available



The Towers

THE TOWERS

Size: 1,142 rooms
Cost per week: £102.13 - 104.65
Location: Colchester Campus

13-16 rooms per flat, shared showers and toilets



The Meadows

THE MEADOWS

Size: 228 townhouse rooms plus 420 flats with en suite rooms
Cost per week: £155.26 - 162.05
Location: Colchester Campus

12 rooms per townhouse with lounge/kitchen, 5-7 rooms per flat with shared kitchen



University Quays

UNIVERSITY QUAYS

Size: 766 rooms
Cost per week: £148.40 - 174.44
Location: Colchester Campus

7-8 rooms per flat, en suite facilities

THE HOUSES

Size: 267 rooms
Cost per week: £141.19 - 153.37
Location: Colchester Campus

4-6 rooms per flat, en suite facilities, some adapted rooms available



The Houses



The Copse

THE COPSE

Size: 643 single en suite rooms and studios
Cost per week: £167.58 - 196.49
Location: Colchester Campus

4-12 rooms per cluster flat, en suite facilities, studio flats also available

UNIVERSITY SQUARE

Size: 497 rooms and 64 studio flats
Cost per week: £152.67 - 188.30
Location: Southend Campus

11 rooms per flat, en suite facilities, studio flats have own kitchenette, some adapted rooms available



University Square

These figures show the current cost per week of our accommodation. It's likely that our rental charges for 21 - 22 will increase from these current prices. We'll publish the new prices on our website as soon as they are available. Accommodation rates in Colchester also include an Essex Sport Silver membership.

FEES AND SCHOLARSHIPS

When you come to study with us, we understand that you are making a significant investment of time and money, so we want to make sure it pays off. Whether it's through our world-class facilities or our award-winning accommodation, your time at Essex is guaranteed to leave you with memories that no one can put a price on.



EU STUDENTS

EU students will be considered international students for fees purposes from 2021 entry onwards, so the fees on these pages also apply to students from the EU. EU scholarships worth up to £7,000 will be available, please see the links on these pages for further information.

International fees

UNDERGRADUATE FEES - BY DEPARTMENT

East 15; History; Edge Hotel School; Languages and Linguistics; Literature, Film and Theatre Studies; Psychosocial and Psychoanalytical Studies; Philosophy and Art History; Sociology*	£16,850
Essex Business School; Law and Human Rights; Economics; Government; Mathematical Sciences; Sports, Rehabilitation and Exercise Sciences	£17,700
Life Sciences; Psychology	£19,080
Computer Science and Electronic Engineering	£19,670
Undergraduate living and accommodation costs (per year, approximately)	£8,429 - 14,079

*Please see our course finder for fees for Health and Social Care courses

POSTGRADUATE TAUGHT FEES - BY DEPARTMENT / PROGRAMME

History; Law; Literature, Film and Theatre Studies; Philosophy and Art History; Life Sciences; Health and Social Care; Mathematics; Psychology; Sports, Rehabilitation and Exercise Sciences; Government; Languages and Linguistics; Psychosocial and Psychoanalytical Studies; Sociology	£18,800
MSc Marine Biology; Computer Science and Electronic Engineering; Essex Business School; Economics	£19,380
East 15 (Acting)	£17,570
East 15 (Theatre Directing)	£15,440
The Essex MBA	TBC
Graduate Diploma	TBC

POSTGRADUATE RESEARCH FEES

Non-lab-based	£16,230
Lab-based	£18,800
Postgraduate living and accommodation costs (per year, approximately)	£10,811 - 18,025

For undergraduate students and postgraduate students on courses with a duration of more than one year with an international fee status, tuition fees normally increase for each academic year of study. This annual increase will be 5% or the annual increase in the RPI-X index, whichever is higher. Find out how we use your fees: essex.ac.uk/using-your-fees

UNIVERSITY OF ESSEX SCHOLARSHIPS

Award	Amount	Eligibility	Website
Regional scholarships - undergraduate and postgraduate awards	Varying amounts	Awards are available for students from various regions and backgrounds. Please see website for details and further eligibility criteria	essex.ac.uk/fees-and-funding
International Baccalaureate Excellence Scholarship	£2,000	Students achieving 34 points or more in the International Baccalaureate	essex.ac.uk/fees-and-funding/ug/scholarships/international-baccalaureate
Academic Excellence International Masters Scholarships	Varying amounts	Please see website for details	essex.ac.uk/fees-and-funding/masters/scholarships
University of Essex Doctoral Scholarships	Varies by department and scheme	Please visit the website for full criteria	essex.ac.uk/fees-and-funding/research/scholarships
Loyalty discounts	Up to 33% of tuition fees	Graduates from Essex Bachelors, Masters and Graduate Diploma courses and former study abroad students	essex.ac.uk/fees-and-funding/masters/loyalty

A number of external scholarships and awards are also available. Please visit essex.ac.uk/fees-and-funding for further information.

At Essex, we are continually investing in your future. We support and encourage you to make the most of your time at university and provide you with ongoing support when you graduate.



ENHANCE YOUR CAREER PROSPECTS

Our courses are designed to equip you with a range of transferable skills and experiences which will make you an attractive candidate to future employers. All of our undergraduate degrees include a module on employability, with special emphasis on your area of study. We also offer a whole range of additional services, support and opportunities for you to develop yourself further to really stand out in front of future employers.

LEARN A LANGUAGE

We offer several ways for all our students to learn a new language, including the popular Languages for All programme offering lessons in up to seven languages (Arabic, French, German, Japanese, Mandarin Chinese, Russian and Spanish!) essex.ac.uk/life/student-services/learn-a-language

THE BIG ESSEX AWARD

Our Employability Award lets you gain recognition for extra-curricular activities, which will then be recorded in your undergraduate HEAR (Higher Education Achievement Record), or the postgraduate FAR (Further Achievement Record). There are four levels to the award - Bronze, Silver, Gold and Platinum - so you'll have a chance to work through the levels during your time at Essex and really impress your future employers.

Activities that may count towards your Big Essex Award include part-time work, volunteering through the Students' Union vTeam, language learning through Languages for All, having an executive role in a student society or sports club, becoming a course representative, and more. essex.ac.uk/careers/bigex

EMPLOYABILITY WORKSHOPS

Our workshops and webinars will help you successfully apply for work, both during and after your studies. Training includes help with creating the perfect CV, tips on how to excel at interviews and guidance on delivering a professional presentation. Training is also available on how to make the most out of networking and LinkedIn. Employers and employer organisations also offer talks on how to prepare for a career or training opportunities in their field. essex.ac.uk/careers

STUDY ABROAD OPPORTUNITIES

Most of our undergraduate courses offer study abroad opportunities. We have relationships with over 150 institutions in 40 countries worldwide. essex.ac.uk/essexabroad

IN NATIONAL NETWORKS

We've established partnerships with key European universities crossing disciplines to enrich our research and enhance learning opportunities for our students. Find out more about the YUFE and YERUN partnerships on the pages of this prospectus. essex.ac.uk/global/engagement/european-networks



GAIN REAL-LIFE EXPERIENCE

There are a number of ways in which you can gain wider experience during your studies at Essex.

Our CareerHub job listings board lists vacancies for a wide range of part-time work opportunities, both on and off campus, including our Frontrunner student internship programme, work in the Students' Union venues and services, opportunities to work as a Student Ambassador or Residence Life Assistant, and a whole range of jobs available through local businesses and organisations. You can also use CareerHub to search for full-time graduate jobs.

essex.ac.uk/careers



WORK PLACEMENT AS PART OF YOUR STUDIES

In most degree subjects we offer the opportunity for you to include a work placement year as part of your undergraduate degree – this will usually be a year-long paid work placement in industry, relevant to your field of study. We also offer Masters programmes with a Professional Placement in selected subjects.

essex.ac.uk/careers/placements
essex.ac.uk/masters/masters-with-professional-placements

IMMIGRATION LIMITATIONS ON WORKING IN THE UK DURING YOUR STUDIES

The UK government intends to introduce new immigration rules from 1 January 2021. The new rules will apply to all those wishing to come to the UK to study, regardless of nationality. We expect there to be work restrictions for those coming to the UK to study. We will publish more information on our website once details are known.

ALUMNI SUCCESS

Our amazing alumni have gone on to make inventions, change the world, win prestigious British Council alumni awards, and make an impact in their communities. Find out more about alumni from your country:

essex.ac.uk/international/country-specific-information

New Graduate Immigration Route

A new graduate route, to be introduced in summer 2021, will allow eligible graduates to remain in the UK to work, or look for work, for two years after completing their course. This will allow eligible graduates to gain valuable post-graduation work experience in the UK, and it is expected it will be possible to transfer to another work route if you find suitable employment.

Find out more:

essex.ac.uk/international/new-graduate-immigration-route

HERE FOR YOU

Our Student Development Careers Services offer dedicated international careers advice and support available during your studies and after you graduate, helping you look for graduate-level work both in the UK and abroad and bringing you together with potential employees at careers events. The team organise a large annual Career Fair, as well as subject-specific events, to help you meet potential employers right on campus. Their resources also include access to local, national and international job listings, such as GradLink UK. The team can also provide support and advice to students looking to start up their own business upon graduation (subject to immigration permission).

RECENT GRADUATE EMPLOYERS

- Amnesty International
- Barclays
- Bloomberg
- BP
- Cancer Research UK
- Citi
- Credit Suisse
- Deloitte
- Fujitsu
- GlaxoSmithKline
- Goldman Sachs
- Intel
- KPMG
- Microsoft
- Ministry of Foreign Affairs, Qatar
- Morgan Stanley
- Procter & Gamble
- Panasonic
- Pricewaterhouse Coopers
- Shell
- The Royal Shakespeare Company
- United Nations
- United Overseas Bank (UOB), Malaysia

STUDENT SUPPORT

We provide a range of support services to make sure that you can make the most of your time at Essex. They include academic skills support, mentoring and general guidance. Find space for worship, meditation and quiet reflection or just have a friendly chat.



WELFARE AND SUPPORT

As an international community we understand the needs and concerns of international students, and do our best to provide you with excellent support facilities.

Our support and welfare services include healthcare, immigration advice, support with your faith and assistance with improving your academic skills, as well as places you can go if you just need to talk to someone.

SUPPORT AND GUIDANCE

Student Services Hubs

Our Student Services Hubs can help with general wellbeing and funding advice. We also have facilities and advice available for students with disabilities and those struggling with issues like settling in and exam anxiety.

Immigration

UK immigration advice is regulated, so can only be provided by our authorised advisers.

Please visit [essex.ac.uk/immigration](https://www.essex.ac.uk/immigration) for further information and the 'ask us a question' section if you have a query.

SUPPORT WITH YOUR STUDIES

You may find studying at a UK university very different to your home country, and it may be the first time you'll be studying in English. We aim to ensure that you can get the most out of your education by providing a range of academic and English language support classes.

Mentoring

Our academic departments also provide their own support services, with most departments running student mentoring schemes, and our lecturers and professors offering office hours for one-to-one guidance with your studies.

HEALTH AND WELLBEING

Health services

There is a health centre on our Colchester Campus which offers appointments with male and female doctors, as well as specialist services and counselling. Our Southend Campus has dental and GP training practices, supported by the local Primary Care Trust, on site. It is important to register with the health centre as soon as you can so that you can receive treatment when you need it.

Nightline

Nightline is an award-winning, student-volunteer-run advice and support service, which is available overnight throughout term-time. The volunteers are able to provide a listening ear and impartial advice, or a cup of tea and a friendly talk if you're just feeling homesick.

Residence Life

The Residence Life team offers support within your on-campus accommodation by providing support, helping you get to know your flatmates, and organising fun events to help you meet other students in your accommodation building.

Religious life

Our Faith Centre is for all members of the University community – of all faiths and none. We offer on-campus pastoral care, a confidential listening ear and spiritual support. We also offer a safe place to practise or explore faith, either in the Centre or by connecting you to a local place of worship.

STUDENTS WITH FAMILIES

It is important that you're aware of the additional costs and implications of bringing your family with you to the UK.

Please visit our website for further information for students with dependants. If your family will need dependants visas we recommend you check the Home Office criteria to see if they would be eligible to apply.

WE ARE ESSEX

Everyone has a different background, a different experience, a different perspective. Our students, staff and alumni come from all over the world, each with their own unique story to tell. Here are some stories from our inspirational students.



FERNANDA - MA SOCIOLOGY AND MANAGEMENT (MEXICO)

"I know this is the place I'm meant to be"

"I always wanted to continue my education. England was my first choice but when I first applied for my Masters I was scared I wouldn't be able to come so I was ok with staying in Mexico as well. But now I'm here I know this is the place I'm meant to be. I find it so encouraging and the international community here is amazing and you learn a lot of things."



ANTONIO - BA PHILOSOPHY AND POLITICS (PORTUGAL)

"I wanted to get out of my shell and meet new people"

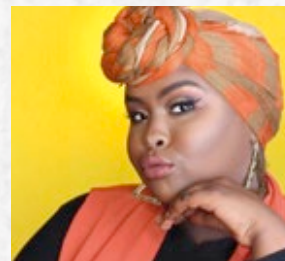
"Next year I will be going on my Year Abroad to Tokyo. I've always wanted to go to Asia. I really enjoyed coming to Essex. I had no connections at the University: I wanted to get out of my shell and meet new people. During Freshers' Week I didn't know anyone, so I came down to the SU Bar, grabbed a drink and found someone to speak to. That is how I met one of my closest friends."



SANDRA - BSC PSYCHOLOGY (SPAIN)

"My friends here are such a huge inspiration to me"

"Some of them have three jobs, or two exec positions in different societies, they're really busy people. But it's such a great feeling, when we finally have some time free, of going to each other's rooms and talking about your day, your drama or any silly things, it's just really relaxing."



ASHA - SU PRESIDENT (NORWAY)

"My advice would be get involved as soon as possible; even before you get your results"

"My goal is to make everyone feel comfortable here at Essex. My advice would be to get involved as soon as possible; even before you get your results you can connect with your new course-mates and flatmates on Facebook."



CAMILA - MRES ECONOMICS (BRAZIL)

"I'm the first in my family to study abroad, and the first to get a higher education too."

"Getting here, to Essex, made me very proud. In Brazil we're not led to believe that we should study abroad, so I think getting here is one of my biggest achievements. I'm the first in my family to study abroad, and the first to get a higher education too. My parents are very, very proud. They miss me, but they understand that it's for a bigger purpose."



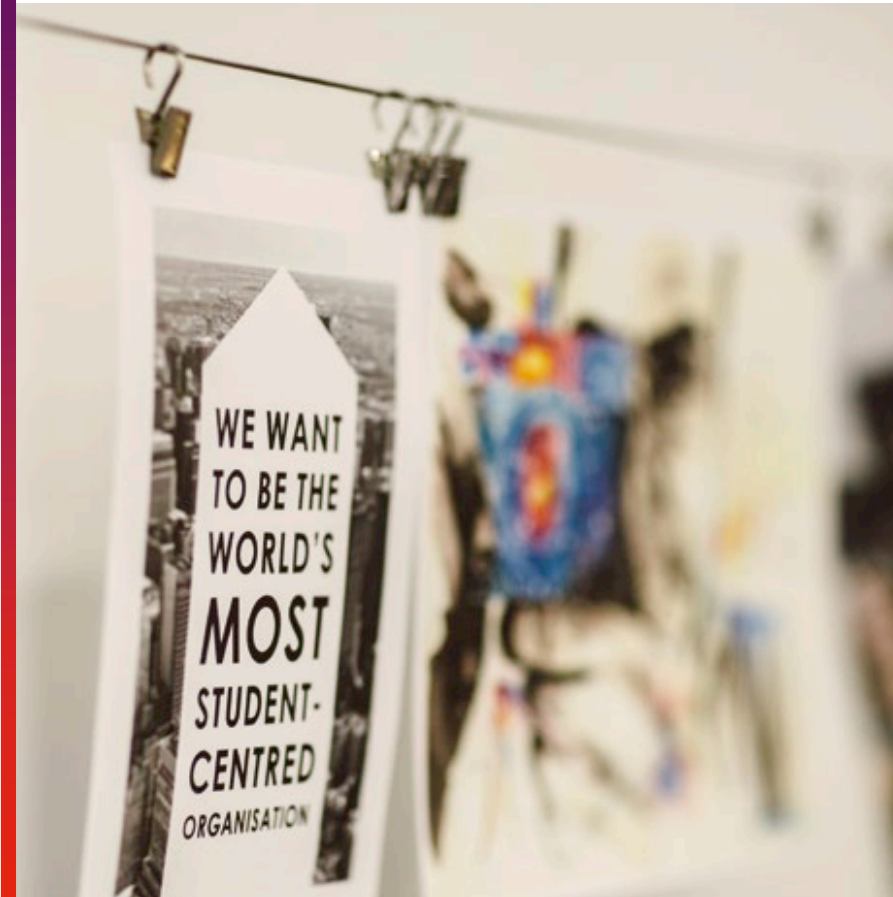
MUHAMMAD - BSC ACCOUNTING AND FINANCE (MALAYSIA)

"My parents both cried when I told them I got a first-class degree. Their tears of joy were the best moment for me, I have never felt so much happiness in my life."

"I worked a part-time job throughout my degree so that I could save up to pay for my parents to come here for graduation. Time management was always the key for this. I had to make sure my studies and assignments were the priority but I also worked 15-20 hours a week; I needed to make sure that I used my free time wisely, for my study, friends and myself."

STUDENTS' UNION

Studying at the University of Essex means being part of our award-winning Students' Union. Here's what makes it stand out.



Our Students' Union, or SU, as they are known, help to support our "student town" on our Colchester Campus, complete with shops, cafés, bars, restaurants and even a nightclub. If you're based in Southend you can grab a coffee or play videogames with friends in the SU Lounge, and at Loughton you'll find a brand new café-bar.

GET INVOLVED

At Essex, we want you to challenge everything and push yourself, but why stop in the classroom? Our Students' Union offers membership to over 100 societies. You can meet people on campus before you join the University through social media, and meet representatives from the different societies during Welcome Week on campus.

You can find all current societies on the SU website and if you don't find one that suits you, you can set one up once you arrive.

essexstudent.com/societies/findasociety

AN INTERNATIONAL COMMUNITY

Our students come from around 130 different countries and the SU promises to benefit all students. There are over 30 different cultural societies where you can meet other students from your country or explore other cultures. We also have the International Students' Association (ISA) who celebrate and promote cultural diversity on campus, and represent our international students' interests through the SU VP International role.

STAY ACTIVE

We have over 40 sports teams, including those you might expect like football, rugby and netball plus some sports you may have never tried before. From fencing to yoga, we've got plenty to keep you busy.

WHAT'S ON

We'll make sure you're never bored at Essex with activities day and night to keep you occupied. Our cinema shows the latest films, we have quizzes in the SU Bar, open forums for heated debates and so much more.

SHAPE EVERYTHING

Students run the SU. You get to have your say and make an impact on life on campus. Whether it's about what gets stocked in our stores, requesting more vegan options on campus or what we campaign for together. Whatever you want to do, we're here to make it happen. Nothing is too big or too small.

"I think a lot of people see the Students' Union as a means to having a good time, which of course it is, but it's also so much more than that. Being able to work towards tackling the issues that students care about, like cost of living, accommodation and mental health, really makes my job worthwhile. The SU belongs to all students, and they're empowered to make change within it. Without students, the University wouldn't be here."

Tancrede Chartier, France, Students' Union President 2018-19

EUROPEAN PARTNERSHIPS

We're working in alliance with European university networks to bring together institutions across the continent.



YUFE

We're part of ground-breaking plans to develop a new 'European University' as part of the pioneering Young Universities for the Future of Europe (YUFE).

The YUFE alliance includes eight leading young universities:

- Maastricht University (coordinator) - Netherlands
- Carlos III University of Madrid - Spain
- University of Antwerp - Belgium
- University of Bremen - Germany
- University of Cyprus - Cyprus
- University of Eastern Finland
- University of Essex - United Kingdom
- University of Rome Tor Vergata - Italy

STUDYING THROUGHOUT EUROPE

Once fully established, the YUFE European University looks to enable prospective students to choose from programmes offered at each of the eight YUFE universities. The official language of YUFE study programmes is English, but students who spend a period at a university in another country will be encouraged and supported to learn the language of their host country.

Graduates from YUFE programmes will receive a European diploma that will be valid anywhere in Europe. The diploma will not only acknowledge academic performance, but will also recognise student mobility, language learning, and any professional training, job shadowing and community volunteering you may have undertaken during your studies.



YERUN

We are collaborating with the Young European Research Universities Network (YERUN) to develop joint research and teaching initiatives and to maximise mobility, research capacities and the employability of our graduates.

Universities in the YERUN network share best practice for enhancing graduate employability and provide grants for staff and student mobility between partner institutions. YERUN's goal is to find ways for further academic and research cooperation between the network members.

HOW TO APPLY

APPLYING

For undergraduate degrees

Applications for Bachelors degrees should be made through UCAS. Our UCAS code is E70. ucas.com

If you only want to apply to the University of Essex and do not plan to make a UCAS application, you can apply to us directly through our online application form.

essex.ac.uk/direct

For Masters degrees

We welcome online applications for our Masters degrees.

essex.ac.uk/masters/applying-to-essex

Our online application form takes about 20 minutes to complete and you can save and return to it if you need to. Your supporting documents must include transcripts of your university-level studies to date and any other items which your department requires.

If you are offered a place on a taught course, your offer may be made conditional upon additional documents such as a personal statement, a reference, proof of English Language proficiency, final transcript and degree certificates. Full details, including where to send information, are available online through the link above.



For research degrees

We welcome online applications for our research degrees.

essex.ac.uk/postgraduate-research-degrees/applying-to-essex

You will need to submit a research proposal, which includes:

- a working title and key words
- a summary of the aims and objectives of your research
- an outline of the ways you will meet these aims and objectives, referring to research methods and specific resources you will use
- evidence of your awareness of relevant literature and theoretical approaches
- an overview of the expected outcomes and the original contribution your research will make to existing bodies of knowledge
- a brief statement on how your research interests tie in with those found in the department, school or centre

You must also provide transcripts of your university-level studies to date.

If you are offered a place on a research course, your offer may be made conditional upon additional documents such as a reference or proof of English language proficiency.

GENERAL ENTRY REQUIREMENTS

Undergraduate

Typical entry requirements for our undergraduate courses can be found on our online course finder essex.ac.uk/subjects

International equivalents are available on our country-specific webpages.

essex.ac.uk/international/country-specific-information

If you do not meet these requirements you may be able to join a pathway programme at the University of Essex International College, please see the course section in this prospectus for further details.

Some courses will have additional subject-specific requirements or additional requirements, such as auditions (East 15 acting courses), interviews or skills tests. Please visit our online course finder for further information.

Taught courses (PGT)

We will consider all applicants with a 2:2 or above, or equivalent international qualifications. For some courses there may be additional requirements.

Research degrees (PGR)

You will normally need a good performance in a Masters course in order to study a PhD in most disciplines.

A well-developed research proposal is required, in an area in which we can offer supervision.

English language requirements

If English is not your first language, you need to provide evidence of your ability to understand and express yourself in English for academic purposes.

If you have a score which is less than five years old (undergraduate applicants) or less than three years old (postgraduate applicants) in an internationally recognised test, such as IELTS or Pearson Test of English (Academic), please supply your results on your application (undergraduate) or a copy of your certificate with your application (postgraduate). TOEFL test scores must be less than two years old. Other tests or qualifications may be accepted, please visit our website for further details: essex.ac.uk/undergraduate/applying-to-essex

essex.ac.uk/masters/applying-to-essex

If you do not have a current or acceptable score, your offer will be conditional upon you achieving an acceptable English language qualification.

The English language score required will vary by level of study and subject, please see our online course finder for requirements.

Please note that students who need a student visa to study in the UK must meet the Home Office minimum English language requirements, including component requirements.

If you do not meet the English language requirement for your course we offer pre-session English courses in partnership with University of Essex International College, please see essex.ac.uk/international/pre-sessional for further information

PERSONAL STATEMENTS

Due to Home Office requirements, please ensure your personal statement makes it clear why you wish to study in the UK and why you've chosen the subject you are applying for. You should also tell us about your full academic history including any periods of time spent studying in the UK. If you have spent any time out of education, please also let us know what you were doing during this time.

IMMIGRATION AND APPLYING FOR A VISA

The UK government intends to introduce new immigration rules from 1 January 2021. The new rules will apply to all those wishing to come to the UK to study, regardless of nationality, after 31 December 2020.

We will publish more information on our website once details are known.

A new Graduate Immigration Route is due to be introduced in summer 2021. This route will allow eligible graduates to remain in the UK to work, or look for work, for two years after completing their course. Further information can be found online:

essex.ac.uk/international/new-graduate-immigration-route

OUR COURSES

ACTING (EAST 15)

- East 15 is a full member of the University/Resident Theatre Association (URTA) of America
- We are ranked first in the UK for drama (Guardian University Guide 2020) and number one in the UK for diversity (The Stage)
- Our Loughton Campus includes state-of-the-art studios, technical equipment and an innovative theatre space. It's located just five minutes from a London Underground station, Debden, on the east end of the Central line.

UNDERGRADUATE

BA Acting (L)

BA Acting (International) (L)

BA Acting and Contemporary Theatre (L)

BA Acting and Stage Combat (S)

BA Acting and Community Theatre (S)

BA Physical Theatre (S)

BA Stage and Production Management (L)

BA Creative Producing (Theatre and Short Film) (S)

BA World Performance (S)

Cert HE Theatre Arts (L)(S)

International Foundation in Acting (L)

POSTGRADUATE

MA Acting (L)

MA Acting (International) (L)

MFA Acting (International) (L)

MA Advanced Professional Theatre Practice (subject to approval)

MA Theatre Directing (L)

MFA Theatre Directing (L)

PhD Drama and Performance

PhD Drama and Performance (Practice as Research)

Entry requirements

Auditions or interviews will be required. Please visit the department's website for further information about audition and interview dates in your country and online auditions.

Tuition fees

- Undergraduate: £16,850
- Masters: £15,440 (Theatre Directing) / £17,570 (Acting)
- Research: £16,230

east15.ac.uk

COMPUTER SCIENCE AND ELECTRONIC ENGINEERING

- We offer exceptional purpose-built facilities including state-of-the-art labs
- We specialise in areas as diverse as assistive technologies, computer games, artificial intelligence, evolutionary computation, Big Data, and robotics
- You can gain professional IET and BCS accreditation with some courses

UNDERGRADUATE

BSc Computer Science**

BEng Computer Networks**

BSc Computer Games**

BEng Computer Systems Engineering**

BEng Computers with Electronics**

BEng Electronic Engineering**

BEng Communications Engineering**

BEng Neural Engineering with Psychology**

BEng Robotic Engineering**

BEng Mechatronic Systems**

MEng Electronic Engineering (Integrated Masters)

MEng Communications Engineering (Integrated Masters)*

MSci Computer Science (Integrated Masters)*

POSTGRADUATE

MSc Advanced Computer Science

MSc Algorithmic Trading

MSc Artificial Intelligence
January entry available

MSc Artificial Intelligence and its Applications
January entry available

MSc Big Data and Text Analysis

MSc Computational Finance
January entry available

MSc Computer Engineering

MSc Computer Games

MSc Financial Technology (Computer Science)

MSc Internet of Things

MSc Intelligent Systems and Robotics
January entry available

MSc Electronic Engineering

MSc Computer Networks and Security

MSc Global Communication Systems

MSD, MPhil, PhD Applied Physics

PhD Computational Finance

MSD, MPhil, PhD Computing and Electronic Systems

MSD, MPhil, PhD Computer Science

MSD, MPhil, PhD Electronic Systems Engineering (Integrated) PhD Engineering

+ This course has an optional year abroad variant

* This course has an optional placement year variant

Tuition fees:

- Undergraduate: £19,670
- Masters: £19,380
- Research: £16,230

essex.ac.uk/csee

ECONOMICS

- Ranked top 15 in the UK for economics (Guardian University Guide 2020)
- Top 10 for value added to economics graduate wages (The Economist 2017)
- Ranked among the top 150 departments in the QS World University Rankings by Subject (2020)

UNDERGRADUATE

BA Business Economics**

BA, BSc Economics**

BA, BSc Management Economics**

BA, BSc International Economics**

BA, BSc Financial Economics**

BA Financial Economics and Accounting**

BSc Economics with Computing**

BSc Economics with Mathematics**

BA, BSc Economics with Psychology**

BA History and Economics**

BA Economics with a Modern Language (includes year abroad)

BA Economics with Language Studies

MEcon Economics (4 year Integrated Masters)**

MEcon Financial Economics (4 year Integrated Masters)**

MEcon International Economics (4 year Integrated Masters)**

MEcon Management Economics (4 year Integrated Masters)**

POSTGRADUATE

MA Economics

MSc Money and Banking

MSc Behavioural Economics

January entry available

MSc Financial Economics and Accounting

MSc Applied Economics and Data Analysis

MSc Economics with Data Analytics

MSc Economics

MSc Economics and Econometrics

MSc Financial and Business Economics

MA, MSc Financial Economics

MSc Financial Econometrics

MSc Financial Economics and Econometrics

MSc Financial Technology (Economics)

MA International Development

MA, MSc International Economics

MA, MSc Management Economics

January entry available (MSc only)

Graduate Diploma in Economics

MSc Quantitative International Development

MRes Economics

MPhil, PhD Economics

+ This course has an optional year abroad variant

* This course has an optional placement year variant

Tuition fees:

- Undergraduate: £17,700
- Masters: £19,380
- Research: £16,230

essex.ac.uk/economics

EDGE HOTEL SCHOOL

- Our Hospitality and Events Management programmes give you an insight into hotel management in a professional working environment
- You'll gain skills in hospitality business management, including human resources, finance and digital marketing

UNDERGRADUATE

BA Hospitality Management*

BA Event Management*

POSTGRADUATE

MSc International Hospitality Management

+ This course has an optional study abroad year variant

Tuition fees:

- Undergraduate: £16,850
- Postgraduate: TBC

essex.ac.uk/edge-hotel-school

ESSEX BUSINESS SCHOOL

- Our professionally accredited courses may exempt you from a number of further professional exams, including ACCA, ICAEW and CIMA – see our website for full details
- The Essex MBA is AMBA accredited and generous scholarships are available for applicants to this programme
- Students can take advantage of free Bloomberg software training

UNDERGRADUATE

BSc Accounting (C)**

BSc Accounting and Finance (C)**

BSc Accounting and Management (C)**

BSc Accounting with Economics (C)**

BSc Banking and Finance (C)**

BSc Finance * (C)	
BSc Finance and Management * (C)	
BSc Business Management * (C)	
BA Business Management and Modern Languages (C)	
BA Business Management with a Modern Language (C)	
BSc International Business and Entrepreneurship * (S)	
BSc International Business and Finance * (S)	
BSc Management and Marketing * (C)	
BBA Business Administration * (S)	
BSc Tourism Management * (S)	
BSc Marketing * (S)	
MAcc Accounting and Finance (4 year Integrated Masters) *	
MMan Marketing and Management (4 year Integrated Masters) *	
POSTGRADUATE	
MSc Accounting (C)	
MSc Accounting and Finance (C)	
MSc Accounting and Financial Management (C)	
MRes Accounting (C)	
MSc International Accounting and Banking (C)	
MSc Banking and Finance (C)	
MSc Finance (C)	
MSc Finance and Data Analytics (C)	
MSc Finance and Investment (C)	
MSc Finance and Management (C)	
MSc Financial Engineering and Risk Management (C)	

MSc Finance and Global Trading (C)
MRes Finance
MSc Financial Technology (Finance) (C)
The Essex MBA (C) <i>January entry available</i>
MSc International Business and Entrepreneurship (S)
MSc Entrepreneurship and Innovation (S)
MSc International Logistics and Supply Chain Management (S)
MBM Master of Business Management (S)
MSc Business Analytics (S) <i>January entry available</i>
MSc Global Project Management (S)
MSc Human Resource Management (C)
MSc Organisational Change Management (C)
MRes Management and Organisation (C)
MSc Management (C)
MSc Management (International) (C)
MSc Management (Marketing) (C)
MSc Management (Leadership) (C)
MSc Management (Advertising and Corporate Communications) (C)
MSc Marketing and Brand Management (C)
MSc International Marketing and Entrepreneurship (S)
MSD, MPhil, PhD Accounting (C)
MSD, MPhil, PhD Finance (C)
MSD, MPhil, PhD Business Administration (S)
MPhil, PhD Human Resource Management and Organisation Studies

MSD, MPhil, PhD Management Studies (C)
PhD Business Analytics (S)
PhD Entrepreneurship (S)
(Integrated) PhD Entrepreneurship
(Integrated) PhD Business Administration
(Integrated) PhD Management Studies
+ This course has an optional year abroad variant
* This course has an optional placement year variant
Tuition fees:
■ Undergraduate: £17,700
■ Masters: £19,380
■ MBA: TBC
■ Research: £16,230

essex.ac.uk/ebs

HEALTH AND SOCIAL CARE

- Gain real experience through work placements and research
- Half of your nursing study period is spent in clinical settings
- We have strong partnerships with local health authorities

UNDERGRADUATE

BSc Nursing (Adult) *
BSc Nursing (Mental Health) *
BSc Occupational Therapy
BA Social Work
BSc Speech and Language Therapy *

POSTGRADUATE

MA, MPhil, PhD Health and Organisational Research
MSc Health Research
MSc Occupational Therapy (pre-registration)
MA Social Work (two-year programme)
MSc Speech and Language Therapy (pre-registration)

MSD, MPhil, PhD Health Studies
MSD, MPhil, PhD Nursing Studies
(Integrated) PhD Health Studies
MSD, MPhil, PhD Occupational Therapy
MPhil, PhD Applied Psychology
MSD, MPhil Social Policy
PhD Social Work
MPhil, PhD Speech and Language Therapy
MPhil, PhD Applied Psychology
Doctorate Clinical Psychology
+ This course has an optional year abroad variant
* This course has an optional placement year variant

Entry requirements
Please see our website for academic requirements. An on-campus or online interview is required.

Tuition fees:

- Undergraduate: Please check webpages.
- Masters: £18,800
- Research: £16,230

essex.ac.uk/departments/health-and-social-care

HISTORY

- Gain experience through voluntary work at local museums, archives and heritage sites
- More than two-thirds of our research was rated "world leading" or "internationally excellent" in the REF 2014 assessment

UNDERGRADUATE

BA History *
BA History and Criminology *
BA History with Film Studies *

BA History and Literature *
BA History with Human Rights *
BA Modern History *
BA Modern History and International Relations *
BA Modern History and Politics *
BA History and Sociology *
MHist History (4 year Integrated Masters) *

POSTGRADUATE

MA History
MA War, Culture and Society
Postgraduate Certificate in History
MAD, MPhil, PhD History
+ This course has an optional year abroad variant
* This course has an optional placement year variant

Tuition fees:

- Undergraduate: £16,850
- Masters: £18,800
- Research: £16,230

essex.ac.uk/history

LANGUAGES AND LINGUISTICS

- We're ranked in the UK's top 25 for Linguistics (TGUG 2020)
- We're ranked among the top 150 departments in the QS World University Rankings (2020)
- Work in our state-of-the-art interpreting lab and UN-style conference booths

UNDERGRADUATE

BA English Language and Linguistics *
BA English Language and Literature *
BA English Language with Media Communication *
BA Linguistics *
BA Teaching English as a Foreign Language *

BA Linguistics with Data Science * (subject to approval)
BA Language Studies
BA Language Studies and Linguistics
BA Language Studies and Teaching English as a Foreign Language
BA Language Studies with Latin American Studies
BA French Studies and Modern Languages
BA German Studies and Modern Languages
BA International Relations and Modern Languages *
BA International Relations and Language Studies
BA Italian Studies and Modern Languages
BA Modern Languages
BA Modern Languages and English Language
BA Modern Languages and Linguistics
BA Modern Languages and Teaching English as a Foreign Language
BA Modern Languages with Latin American Studies
BA Spanish Studies and Modern Languages
BA Spanish, Portuguese and Brazilian Studies
MLang Modern Languages (Translation) (4 year Integrated Masters)
MLang European Languages (5 year Integrated Masters including year abroad)
MLing English Language and Linguistics (4 year Integrated Masters) *

+ This course has an optional year abroad variant
* This course has an optional placement year variant
Most Modern Language courses are four years including year abroad

POSTGRADUATE

MA Applied Linguistics

MRes Analysing Language Use

PG Diploma Chinese-English Translation and Interpreting

MA Advanced Interpreting with Specialised Translation (Chinese-English)

MA Chinese-English Translation and Professional Practice

MA Conference Interpreting and Translation (Chinese-English)

MA English Language and Linguistics

MRes Experimental Linguistics

MA Linguistic Studies

MA, MRes Linguistics

MA Psycholinguistics

MA Teaching English to Speakers of Other Languages (TESOL)

MA Audiovisual and Literary Translation

MA Translation, Interpreting and Subtitling

MA Translation and Professional Practice

MA Translation and Professional Practice with Professional Placement

MPhil, PhD Analysing Language Use

MPhil, PhD Applied Linguistics

MPhil, PhD English Language Teaching

MPhil, PhD Experimental Linguistics

MPhil, PhD Linguistics

MPhil, PhD Psycholinguistics/Sociolinguistics

MPhil, PhD Translation Studies (Translation, Interpreting and Subtitling)

Tuition fees:

- Undergraduate: £16,850
- Masters: £18,800
- Research: £16,230

essex.ac.uk/linguistics

LAW AND HUMAN RIGHTS

- Gain practical experience with our Essex Law Clinic and Human Rights Clinic
- We are the first university in the UK to sign a memorandum of understanding with the United Nations High Commission for Refugees (UNHCR)
- Our lecturers work with the UN, the UK government and with EU and foreign governments

UNDERGRADUATE

LLB Law +

LLB Law (Senior Status)

LLB Law with Business +

LLB Law with Criminology +

LLB Law with Finance +

LLB Law with Human Rights +

LLB Law with Politics +

LLB Law with Philosophy +

LLB English and French Law (Licence) – including one year studying in France

MLaw Law (4 year Integrated Masters) +

POSTGRADUATE

MA Theory and Practice of Human Rights

MA Human Rights and Cultural Diversity

LLM Economic, Social and Cultural Rights

LLM International Law
[January entry available](#)

LLM International Human Rights Law

LLM International Humanitarian Law

LLM Corporate Responsibility

LLM International Commercial and Business Law

LLM International Commercial and Business Law with Professional Placement

LLM International Trade Law

LLM International Trade and Maritime Law

LLM International Trade and Maritime Law with Professional Placement

LLM Maritime Law

MPhil, PhD Human Rights

MPhil, PhD Law

+ This course has an optional year abroad variant

*This course has an optional placement year variant

Tuition fees:

- Undergraduate: £17,700
- Masters: £18,800
- Research: £16,230

essex.ac.uk/law

LIBERAL ARTS AND AREA STUDIES

- Flexible degree structures allow you to build a course according to your interests, or major in a specific field
- Gain international experience by studying abroad for a term or a year

UNDERGRADUATE

BA American Studies (United States) +*

BA American Studies (United States) with Film +*

BA Criminology and American Studies +*

BA European Studies (Placement Year)

BA European Studies (including Year Abroad)

BA European Studies and Modern Languages

BA European Studies with French/German/Italian/Spanish

BA European Studies with Politics

BA Latin American Studies

BA Latin American Studies (Placement Year)

BA Latin American Studies with Business Management

BA Latin American Studies with Human Rights

BA Liberal Arts +*

BA Global Studies +*

BA Global Studies with Business Management +*

BA Global Studies and Modern Languages +*

BA Global Studies with Human Rights +*

BA Global Studies with Politics +*

+ This course has an optional year abroad variant
Where optional year abroad is not shown, the course includes a compulsory term or year abroad.
* This course has an optional placement year variant

Tuition fees:

- Undergraduate: £16,850

essex.ac.uk/cish

LIFE SCIENCES

- Enjoy first-class lab facilities in our new STEM building
- Range of placement options at undergraduate level

UNDERGRADUATE

BSc Biological Sciences +*

BSc Biochemistry +*

BSc Biomedical Science +*

BSc Genetics +*

BSc Human Biology +*

BSc Marine Biology +*

MSci Biochemistry and Biotechnology (4 year Integrated Masters) +*

MSci Biomedical Science (4 year Integrated Masters) +*

MSci Tropical Marine Biology (4 year Integrated Masters) +*

POSTGRADUATE

MSc Biotechnology

MSc Data Analytics in Health Genomics

MSc Molecular Medicine

MSc Tropical Marine Biology

MSD, MPhil, PhD Biochemistry

MSD, MPhil, PhD Biological Sciences

MSD, MPhil, PhD Cell and Molecular Biology

MSD, MPhil, PhD Environmental Sciences

MSD, MPhil, PhD Immunology

MSD, MPhil, PhD Marine Biology

MSD, MPhil, PhD Microbiology

MSD, MPhil, PhD Molecular Medicine

(Integrated) PhD Tropical Marine Biology

+ This course has an optional year abroad variant
* This course has an optional placement year variant

Tuition fees

- Undergraduate: £19,080
- Masters: £18,800, MSc Marine Biology £19,380
- Research: £18,800

essex.ac.uk/bs

LITERATURE, FILM, AND THEATRE STUDIES

- We're ranked in the UK's top 10 for dance, drama and cinematics (Complete University Guide 2020)
- Students have access to our dedicated film screening and editing facilities and media centre

UNDERGRADUATE

BA Creative Writing +*

BA Drama +*

BA Drama and Literature +*

BA English and United States Literature +*

BA English Literature +*

BA English and Comparative Literature +*

BA Film and Creative Writing +*

BA Film Studies +*

BA Film and Drama+*

BA Film Studies and Literature +*

BA Journalism and Literature +*

BA Journalism and English Language +*

BA Journalism and Politics +*

BA Journalism and Philosophy +*

BA Journalism and Liberal Arts +*

BA Journalism with Human Rights +*

BA Journalism and Modern Languages

BA Journalism and Sociology +*

BA Journalism and Criminology +*

BA Journalism and Economics +*

BA Multimedia Journalism +*

BA Literature and/or Modern Languages +

BA Literature and Creative Writing +*

BA Literature and Sociology +*

MLitSt Literature (4 year Integrated Masters)

MLitSt Creative Writing (4 year Integrated Masters)

MLitSt Literature and Creative Writing (4 year Integrated Masters)

MLitSt Drama and Scriptwriting (4 year Integrated Masters)

POSTGRADUATE

MA American Literatures

MA Avant-Gardes

MA Literature

MA Film and Literature

MA Film Studies

MA Creative Writing

MA Literature and Creative Writing (subject to approval)

MA Modern and Contemporary Literature (subject to approval)

MA Scriptwriting (Theatre and Digital Media)

MA Theatre Practice

MA Wild Writing: Literature, Landscape and the Environment

MAD, MPhil, PhD Creative Writing

MAD, MPhil, PhD Film Studies

PhD Film Studies (Creative Practice)

PhD Journalism

MAD, MPhil, PhD Literature

MAD, MPhil, PhD Theatre Studies

+ This course has an optional year abroad variant

* This course has an optional placement year variant

Tuition fees:

- Undergraduate: £16,850
- Masters: £18,800
- Research: £15,460

essex.ac.uk/lifts

MATHEMATICS AND ACTUARIAL SCIENCE

- BA Actuarial Science offers exemptions from all eight IFA examinations
- We have a dedicated social and study space for Maths students in the department, which is situated in the £18m STEM Centre

UNDERGRADUATE

BSc Actuarial Science +*

BSc Data Science and Analytics +*

BSc Economics and Mathematics +*

BSc Finance and Mathematics +*

BSc Mathematics +*

BSc Statistics +*

BSc Mathematics with Computing +*

BSc Mathematics with Physics +*

MSci Actuarial Science and Data Science (4 year Integrated Masters)

MSci Mathematics and Data Science (4 year Integrated Masters)

MMath Mathematics (4 year Integrated Masters)

POSTGRADUATE

MSc Actuarial Science

MSc Applied Data Science
January entry available

MSc Data Science

MSc Data Science with Professional Placement

MSc Data Science and its Applications
January entry available

MSc Mathematics

MSc Mathematics and Finance

MSc Statistics

MSc Statistics and Operational Research

Postgraduate Diploma Actuarial Science

Postgraduate Diploma Mathematics and Finance

Postgraduate Diploma Statistics and Operational Research

Graduate Diploma in Mathematics

MSD, MPhil, PhD Applied Mathematics

MPhil, PhD Bioinformatics

MSD, MPhil, PhD Mathematical Biology

MSD, MPhil, PhD Mathematics

MSD, MPhil, PhD Operational Research

MSD, MPhil, PhD Pure Mathematics

MSD, MPhil, PhD Statistics

(Integrated) PhD Actuarial Science

(Integrated) PhD Data Science

(Integrated) PhD Mathematics

(Integrated) PhD Operational Research

(Integrated) PhD Statistics

+ This course has an optional year abroad variant

* This course has an optional placement year variant

Tuition fees:

- Undergraduate: £17,700
- Masters: £18,800
- Research: £16,230

essex.ac.uk/maths

PHILOSOPHY AND ART HISTORY

- Top 20 for art history (The Times and Sunday Times Good University Guide 2020)
- We are home to ESCALA, the most important collection of Latin American art in Europe

UNDERGRADUATE

BA Art History +*

BA Art History and History +*

BA Art History and/or with Modern Languages +*

BA Art History, Visual Culture and Media Studies +*

BA Art History and/or with Language Studies

BA Film Studies and Art History +*

BA Curating +*

BA Literature and Art History +*

BA Philosophy and Art History +*

BA Philosophy +*

BA Philosophy, Religion and Ethics +*

BA Philosophy with Business Management +*

BA Philosophy and History +*

BA Philosophy and Law +*

BA Philosophy and Literature +*

BA Philosophy and Politics +*

BA Philosophy and Sociology +*

BA Philosophy with Human Rights +*

BA Social Change +*

MArth Art History (4 year Integrated Masters) +*

MPhil Philosophy (4 year Integrated Masters) +*

POSTGRADUATE

MA Art History and Theory

MA Curating

MA Curating with Professional Placement

Graduate Diploma in Art History and Theory

Graduate Diploma in Philosophy

MA Philosophy (Philosophy and Art History pathway)

MA Philosophy (Continental Philosophy pathway)

MA Philosophy (Critical Social Theory pathway)

MAD, MPhil, PhD Art History and Theory

MAD, PhD Philosophy

+ This course has an optional year abroad variant

* This course has an optional placement year variant

Tuition fees:

- Undergraduate: £16,850
- Masters: £18,800
- Research: £16,230

essex.ac.uk/spah

POLITICS AND INTERNATIONAL RELATIONS

- Ranked among the top 30 departments in the QS World University Rankings by Subject (2020)
- Top 5 for politics (The Times and Sunday Times Good University Guide 2020)
- We have always been the highest-rated politics department in the UK (REF 2014, mainstream universities, Times Higher Education 2014)

UNDERGRADUATE

BA Politics +*

BA Politics and International Relations +*

BA International Relations +*

BA International Development +*

BA Philosophy, Politics and Economics +*

BSc Economics and Politics +*

BA Political Economics +*

BA Political Theory and Public Policy +*

BA Politics with Human Rights +*

MPol International Relations (4 year Integrated Masters) +*

MPol Politics and International Relations (4 year Integrated Masters) +*

POSTGRADUATE

MA Politics

MA, MSc Conflict Resolution

MA, MSc Environmental Futures with Climate change (subject to approval)

MA, MSc Global and Comparative Politics

MA Ideology and Discourse Analysis

MA, MSc, MRes International Relations

MA, MSc, MRes Political Economy

MA, MSc, MRes Political Science

MA Political Theory

MA, MSc Public Opinion and Political Behaviour

The Essex MPP (Master of Public Policy)

MA United States Politics

MSc Social Data Science

Graduate Diploma Politics

MPhil, PhD Government

+ This course has an optional year abroad variant

* This course has an optional placement year variant

Tuition fees:

- Undergraduate: £17,700
- Masters: £18,800
- Research: £16,230

essex.ac.uk/government

PSYCHOLOGY

- Exceptional research labs and facilities, including our Centre for Brain Science
- Courses accredited by the British Psychological Society

UNDERGRADUATE

BA, BSc Psychology +*

BSc Psychology with Cognitive Neuroscience +*

BSc Psychology with Economics +*

BSc Cognitive Science +*

POSTGRADUATE

MSc Psychology (conversion course)

MSc Research Methods in Psychology

MSc Cognitive Neuroscience and Neuropsychology

MSD, MPhil, PhD Psychology (Integrated) PhD Psychology

(Integrated) PhD Psychology with Cognitive Neuroscience and Neuropsychology

+ Optional study abroad year available

* Optional placement year available

Tuition fees:

- Undergraduate: £19,080
- Masters: £18,800
- Research: £18,800

essex.ac.uk/psychology

PSYCHOSOCIAL AND PSYCHOANALYTIC STUDIES

- Our approachable staff have clinical as well as academic expertise and experience
- We've got strong links with the local National Health Service, education and care services and professional institutions

UNDERGRADUATE

FdA, BA Therapeutic Communication and Therapeutic Organisations +*

BA Psychosocial and Psychoanalytic Studies +*

BA Psychodynamic Practice +*

BA Childhood Studies +*

POSTGRADUATE

MA Childhood Studies

MA Psychoanalytic Studies

MA Jungian and Post-Jungian Studies

MA Refugee Care

PG Diploma, MA Management and Organisational Dynamics

MA Psychodynamic Counselling

Graduate Diploma in Psychodynamic Approaches

PhD Psychoanalytic Studies

PhD Childhood Studies

PhD Psychosocial Studies

PhD Refugee Care

+ Optional study abroad year available

* Optional placement year available

Tuition fees:

- Undergraduate: £16,850
- Masters: £18,800
- Research: £16,230

essex.ac.uk/cps

SOCIOLOGY AND CRIMINOLOGY

- Ranked among the top 50 departments in the QS World University Rankings (2020)
- We're ranked top 50 for Social Sciences in the THE World University Rankings (2019)
- Dedicated student resource centre offering academic and personal support

UNDERGRADUATE

BA Criminology +*

BA Criminology with Counselling Skills +*

BA Criminology with Criminal Law +*

BA Criminology with Social Psychology +*

BA Communications and Digital Culture +*

BA Sociology +*

BA Sociology and Criminology +*

BA Sociology and Politics +*

BSc Sociology (Applied Quantitative Research)

BA Sociology with Counselling Skills +*

BSc Sociology with Data Science +*

BA Sociology with Human Rights +*

BA Sociology with Psychosocial Studies +*

BA Social Anthropology +*

BA Social Anthropology with Human Rights +*

BA Sociology with Social Psychology +*

BA Social Sciences +*

MSoc Sociology (4 year Integrated Masters) +*

MSoc Criminology (4 year Integrated Masters) +*

POSTGRADUATE

MA Advertising, Marketing and the Media

MSc Criminology and Socio-Legal Research

MA Criminology

MA, MSc Migration Studies

MA Sociological Research Methods

MA, MAD Sociology

MSc Survey Methods for Social Research

MA, MSc Organised Crime, Terrorism and Security

MA Sociology and Management

MA Sociology and Criminology

MPhil, PhD Criminology

MPhil, PhD Sociology

PhD Survey Methodology

+ This course has an optional year abroad variant

* This course has an optional placement year variant

Tuition fees:

- Undergraduate: £16,850
- Masters: £18,800
- Research: £16,230

essex.ac.uk/sociology

SPORTS, REHABILITATION AND EXERCISE SCIENCES

- We're ranked top 10 in the UK for sports science (Guardian University Guide 2020)
- Work with elite athletes and gain experience in our renowned Human Performance Unit

UNDERGRADUATE

BSc Physiotherapy

BSc Sports and Exercise Science +*

BSc Sports Performance and Coaching +*

BSc Sports Therapy +*

MSc Sports and Exercise Science +* (4 year Integrated Masters)

POSTGRADUATE

MSc Physiotherapy (Pre-Registration)

MSc Coaching Science

MSc Sport and Exercise Psychology

MSc Sport and Exercise Science

MPhil, PhD Physiotherapy

MSD, MPhil, PhD Sports and Exercise Science

MSD, MPhil, PhD Sports and Exercise Medicine

MSD, MPhil, PhD Sports and Exercise Psychology

MSD, MPhil, PhD Health and Exercise Sciences

MSD, MPhil, PhD Health and Physical Activity

MSD, MPhil, PhD Sports Therapy

+ This course has an optional year abroad variant

* This course has an optional placement year variant

Tuition fees:

- Undergraduate: £17,700
- Masters: £18,800
- Research: £18,800

essex.ac.uk/sres

PATHWAY PROGRAMMES AT UNIVERSITY OF ESSEX INTERNATIONAL COLLEGE

The University of Essex International College, a partnership between the University of Essex and Kaplan International Pathways, provides pathway courses that can prepare you for your degree study.

UNDERGRADUATE

Foundation Certificate

- Humanities
- Science and Health
- Social Sciences

International Year One

- Business
- Economics
- Law

POSTGRADUATE

Pre-masters

- Humanities
- Science and Health
- Social Sciences

For further information about these courses and to apply please visit kaplanpathways.com/colleges/university-essex-international-college

PRE-SESSIONAL ENGLISH LANGUAGE COURSES

We offer pre-sessional English language courses which can be taken before your degree if you are an EU or international student and do not meet our English language entry requirements. Our courses will help you improve your English. Upon successful completion of the pre-sessional course you will be able to proceed on to your degree course without having to retake IELTS. Our pre-sessional courses are delivered at The University of Essex International College (in partnership with Kaplan).

To find out more about our pre-sessional courses please visit essex.ac.uk/international/pre-sessional

STUDY ABROAD

We offer opportunities for students to join us for a period of study abroad, either for a full year or part year. To find out more and to apply please visit essex.ac.uk/study-abroad

IMPORTANT INFORMATION

ABOUT THIS PROSPECTUS

When we might make changes to advertised courses and other information

This prospectus tries to answer your questions about life and academic provision on offer at the University of Essex. It was prepared in 2020 and refers to courses which will be available in October 2021. The University makes every effort to ensure the prospectus is accurate at the time it is printed. Exceptionally, it can be necessary to make changes, for example to courses, facilities or fees due to legitimate staffing, financial, regulatory or academic reasons. Examples of such reasons might include a change of law or regulatory requirements, industrial action, lack of demand, departure of key personnel, change in government policy, or withdrawal or reduction of funding. Changes to courses may for example consist of variations to the content and method of delivery of programmes, courses and other services, to discontinue programmes, courses and other services and to merge or combine programmes or courses. If a course change or closure is proposed in such circumstances the University will take all reasonable steps to minimise disruption to students. This will include informing students of the changes in advance and giving them appropriate opportunity to comment on the proposals.

A course would only be closed in exceptional circumstances. If it is ever necessary to close a course the University's preferred approach would be to continue to teach current students on that course until they have completed their studies. If exceptionally that is not possible, the University will explore other options with the affected students for example by considering whether those students can be offered places on alternative courses, or whether their studies can be completed at another institution.

[essex.ac.uk/subjects](https://www.essex.ac.uk/subjects)
[essex.ac.uk/fees](https://www.essex.ac.uk/fees)

No liability for matters outside our control

The University cannot be held responsible for failure/delay in performing obligations caused by things beyond its reasonable control, such as fire, flood or industrial action.

University terms and conditions, procedures, rules and regulations

Applicants are considered in line with the University's Admissions Policy and the Regulations relating to Admission (listed under Academic Regulations), which can be found online at:

[essex.ac.uk/admissions-policy](https://www.essex.ac.uk/admissions-policy)
[essex.ac.uk/admissions-regs](https://www.essex.ac.uk/admissions-regs)

If your application to the University of Essex is successful, by accepting the offer you will be entering into a legal contract with us, subject to fulfilling any conditions included in your offer. Your rights and obligations to us and our rights and obligations to you will be detailed in the information that we provide once the offer has been made. Applicants and registered students must comply with the University's regulations, policies and procedures as part of their contract. A full set of the University Regulations is available at:

[essex.ac.uk/regs](https://www.essex.ac.uk/regs)

The full Procedures, Rules and Regulations of the University, governing how it operates, are set out in the Charter, Statutes and Ordinances and in the University Regulations, Policy and Procedures.
[essex.ac.uk/about/governance/regulations/students.aspx](https://www.essex.ac.uk/about/governance/regulations/students.aspx)

QUALITY ASSURANCE

The Quality Assurance Agency's Higher Education Review of the University in December 2014 covered every aspect of the University's provision and confirmed that the University had met all expectations and meets national requirements for standards and quality.

The University was commended for the strong focus on improving all areas of the student learning experience. The high-quality research environment and development opportunities offered to postgraduate research students were recognised, along with our commitment to listening and responding to student feedback, and to providing our students with opportunities to improve their employment skills and prospects. [qaa.ac.uk](https://www.qaa.ac.uk)

POLICY STATEMENT ON EQUALITY AND DIVERSITY

The University of Essex celebrates diversity, challenges inequality, and is committed to sustaining an inclusive and diverse community that is open to all who have the potential to benefit from membership of it. We ensure equality of opportunity for all its members. We expect staff, students and visitors to be treated, and to treat each other, with dignity and respect regardless of age, disability, gender reassignment, marriage and civil partnership, pregnancy and maternity, race, religion or belief,

sex, sexual orientation, socio-economic background, political beliefs and affiliations, family circumstances or other irrelevant distinction.

TUITION FEE INCREASES DURING YOUR STUDIES

For full-time undergraduate students and postgraduate students on courses with a duration of more than one year with an international fee status, tuition fees normally increase for each academic year of study. This annual increase will be 5% or the annual increase in the RPI-X index, whichever is the higher.
[essex.ac.uk/fees](https://www.essex.ac.uk/fees)

PHOTOGRAPHY

Every effort has been made to obtain permission to reproduce the images contained herein. We would like to thank the student contributors, photographers and Instagrammers who kindly granted us permission to use their content.

DATA FOR MARKETING PURPOSES

Data has been selected for marketing purposes but all claims are based on the most recent data that were available at the time of print: Research Excellence Framework (REF) results are based on 2014 data*; QS World University Rankings by Subject results are based on 2020 data; Times Higher Education (THE) World University Rankings results are based on 2019 data; Complete University Guide rankings are based on 2020 data; Times Good University Guide (TGUG) results are based on 2020 data. Guardian University Guide results are based on 2020 data.

* Intensity-weighted GPA is denoted by the phrase 'research excellence'; raw GPA is denoted by the phrase 'research quality'.

GET IN TOUCH

Colchester Campus

Wivenhoe Park
Colchester CO4 3SQ
United Kingdom
T +44 (0)1206 873333

Southend Campus

Elmer Approach
Southend-on-Sea SS1 1LW
United Kingdom
T +44 (0)1702 328200

Undergraduate admissions
E admit@essex.ac.uk

Postgraduate admissions
E pgadmit@essex.ac.uk

Contact our regional offices:

Americas
Africa
E africa@essex.ac.uk

China
E china@essex.ac.uk

India and subcontinent
E india@essex.ac.uk

Middle East and North Africa
E mena@essex.ac.uk

South East Asia
E SEAsia@essex.ac.uk

Americas
E americas@essex.ac.uk

Europe
E europe@essex.ac.uk

Keep up-to-date by following us on Facebook, Twitter and Vimeo:

 [facebook.com/essexuniio](https://www.facebook.com/essexuniio)

 twitter.com/uessex_intl

 vimeo.com/uniofessex

weibo.com/p/1002061885942524/

WE ARE ESSEX. WE'RE ON THE SIDE OF **PEOPLE WITH GUTS** – REBELS WITH A CAUSE. WE'RE ABOUT PEOPLE WHO **LOVE TO LEARN HOW,** BUT **WANT TO CHALLENGE WHY.** BUT WHY DO WE HAVE TO STOP HERE? WHY CAN'T WE TAKE IT FURTHER, TO THE BIT WHERE IT REALLY GETS INTERESTING? WE'RE ABOUT THE PEOPLE WHO HUDDLE OUTSIDE A CLASS LONG AFTER IT'S FINISHED BECAUSE THERE'S MUCH **MORE TO BE SAID,** MORE ARGUMENTS TO BE HAD. WE'RE ABOUT PEOPLE WHO ARE BOLD ENOUGH TO **CHALLENGE INEQUALITY** AND THE STATUS QUO. PEOPLE WHO DON'T EXPECT THE WORLD TO CHANGE SIMPLY BECAUSE THEY LIKED A FACEBOOK STATUS OR NODDED WHEN SOMEONE ELSE SPOKE. AT ESSEX YOU'RE NOT JUST A STUDENT, **YOU'RE A MEMBER,** SOMEONE WITH GENUINE LICENCE TO SHAPE WHAT GOES ON AROUND YOU. TO US IT DOESN'T MATTER WHERE YOU'VE COME FROM. WE'RE INTERESTED IN HOW YOU WANT TO GROW AND **WHAT YOU WANT TO CHANGE.** WE'RE AFTER PEOPLE WHO WILL HELP US PUSH THE FRONTIERS OF KNOWLEDGE. **CHALLENGING CONVENTION** IS IN OUR DNA. ALL OF WHICH LEAVES YOU WITH A DECISION: ARE YOU GOING TO SIT AND WATCH THE WORLD GO BY? OR DO YOU HAVE THE **COURAGE AND ENERGY** TO SHAPE IT? WE'LL HELP YOU EXPLORE, QUESTION AND CREATE **POWERFUL IDEAS.** WE'LL INTRODUCE YOU TO PEOPLE FROM EVERY CORNER OF THE PLANET, A **GENUINELY GLOBAL COMMUNITY** THAT LIVES, WORKS AND PLAYS TOGETHER. IF YOU GIVE UP AT THE FIRST HURDLE, ESSEX ISN'T FOR YOU. IF YOU WANT TO BE SPOON-FED A DEGREE, ESSEX ISN'T FOR YOU. IF YOU ARE BRAVE ENOUGH TO HAVE IDEAS AND GENEROUS ENOUGH TO SHARE THEM, **WELCOME HOME.**

[essex.ac.uk/international](https://www.essex.ac.uk/international)