



UNIVERSITY OF  
SURREY

**Postgraduate guide 2021**

# MEET THE SURREY STAG

At the University of Surrey, you'll see the Surrey Stag in all kinds of places – from our coat of arms to our student-run newspaper. We even have wild deer appearing on campus from time to time. But perhaps most noticeable is the five-metre tall sculpture situated at the University's entrance.

Constructed from stainless steel, The Surrey Stag was designed by English sculptor Allan Sly and unveiled in 2009 by HRH Prince Edward, Duke of Kent. Since then, it's become somewhat of a Surrey tradition to take a photo with the stag at graduation.

The stag itself symbolises the medieval royal park on which Surrey's Stag Hill campus was developed, and the key you often see it paired with is a heraldic symbol of learning.





# CONTENTS

- 6 Welcome to Surrey
- 9 Career prospects
- 10 Placement opportunities
- 12 At Surrey and beyond
- 16 Our teaching excellence
- 20 Our amazing academics
- 24 Student learning support
- 33 Living at Surrey
- 36 Our accommodation
- 40 Our campus
- 44 Stag Hill map
- 46 Manor Park map
- 48 Our location in the UK
- 50 Guildford
- 52 London
- 54 A global community of ideas
- 58 Clubs, societies and sports
- 64 Your health and wellness
- 66 Sustainability at Surrey
- 71 Our courses
- 94 Funding your study
- 98 English language requirements
- 102 How to apply







# HOW DO YOU SEE THE WORLD?

**At Surrey, we see the world not how it is, but how it could be. If you're considering postgraduate study, it's likely you do too.**

These are difficult times for many of us, as we adapt to the changes that Covid-19 brings. The health and safety of our community is of paramount importance, and Surrey is following all necessary guidelines. But there are better times ahead – new opportunities and exciting possibilities await us, if we just take the next step...

We know that ideas can change the world for the better, and we're passionate about bringing these ideas to life.

From literature to engineering, the pursuit of knowledge improves the world we live in. And a masters degree from Surrey gives you the edge in building a better future.

We support people with ideas, allowing your ambition, intelligence and creativity to thrive.

Our 2,300+ links with industry offer fantastic opportunities for personal and professional growth. We'll support you to make connections with our alumni, supporters and business partners, helping you to learn and prepare for your future career.

Surrey is home to outstanding academic minds, many of whom are active researchers, keeping our courses industry-relevant and giving you a head start once you graduate.

No matter how you see the world, a masters from Surrey will give you what you need to achieve your academic and career ambitions, and to change your future for the better.

**Make Surrey part of your story.**



**Professor G Q Max Lu**  
DL AO FAA FTSE  
President and Vice-Chancellor



2,700+  
postgraduate  
taught students  
(2019-20  
academic year)



97 per cent of  
Surrey's postgraduate  
taught graduates are  
employed or in  
further study\*



International  
community  
of 140+  
nationalities



6,000+  
bedrooms  
on campus



Gold award,  
*Teaching  
Excellence  
Framework  
(TEF)*

\*Graduate Outcomes  
Survey 2020, HESA





# CAREER PROSPECTS

For many students, graduating from Surrey has allowed them to excel in their chosen fields. Our professional and social links span the globe, with many of our graduates making valuable contributions to international research, industry and the arts.

## Realising your career ambitions

Choosing one of our postgraduate courses could change everything. Whether you're looking to pursue an academic passion or kick-start your career, our courses are designed to help you get where you want to be.

When you join us, you're joining a community of dedicated and passionate researchers and academics. There are many careers, places and opportunities in which you could thrive with a Surrey degree. Our Employability and Careers team can help you make it happen and connect you with postgraduate job opportunities. If you're ready to realise your potential, we can help you make your vision a reality.

## Graduate prospects

At Surrey, we strive to make our courses industry-relevant, making our graduates appealing to prospective employers. As a result, 97 per cent of our taught postgraduates are in work or further education within 15 months of graduating (Graduate Outcomes Survey 2020, HESA).

Recent postgraduate students have secured jobs at KPMG, AIG, NHS, Legal & General and Deloitte, among many more. Surrey also boasts an award-winning Employability and Careers team, who offer careers information and guidance throughout your time as a student, as well as up to three years after you graduate.

As a postgraduate, you'll have more specific skills and a greater depth of knowledge to offer potential employers.

# PLACEMENT OPPORTUNITIES

Some of our postgraduate courses offer you opportunities to gain practical experience and build your connections in industry. With more than 2,300 professional links, the University of Surrey is in an excellent position to help you reach your professional potential.

From practical criminology sessions in local prisons to research partnerships with national laboratories and business placements across the globe, a masters from Surrey could prepare you for a great future career. You could gain transferable skills that employers love, as well as experience in your chosen sector. All of our programmes, including those offering placement options, can be found on pages 72 - 93.

## Surrey Business School placements

Postgraduate business students at Surrey who complete placements gain and develop the latest thinking and understanding of business needs, across a diverse range of specialisms, including:

- Business analytics
- Human resource management
- Management
- Marketing.



Placements are intended to tackle projects and challenges within an organisation. Each student is supported by an academic tutor throughout their placement and we can help students find and apply to relevant organisations.

Recent Surrey Business School graduates have gone on to work for a range of companies, including:

- GSK
- British Telecom
- Legal & General
- Caterpillar
- NHS
- CMC Logistics
- Libra Europe
- Sodexo.

## How does the placement scheme work?

### Two-year with placement

For many of our postgraduate Business School courses, if you choose and secure a place at one of our partner organisations, you'll complete 12 months of study at Surrey and spend up to 12 months gaining professional work experience at your placement company. This means you will complete your course in two years studying full-time.

If you decide not to complete a placement or do not secure a place, you'll complete nine months of teaching followed by three months working on your final project. This means you will complete your course in 12 months studying full-time.



# AT SURREY AND BEYOND

At Surrey, we recognise that you may require tailored support both during and after your masters degree. As part of our postgraduate community, you'll be supported in a number of ways when it comes to employability.

## **One-to-one career support**

Whether you want to explore career options within or beyond academia, or need a bit of support writing your CV, our specialist careers advisers are here to provide impartial and confidential support. You can book one-to-one appointments through Surrey Pathfinder, our digital careers hub.

## **Events**

Throughout the year, we host a range of employability-focused events, including two large careers fairs which attract a variety of employers offering graduate roles and placements. We hold a variety of events throughout the year for international students, with sessions focused on working in the UK and internationally, building your personal and professional network, interview skills, alumni networking, career planning, entrepreneurship and visas. There are also more specific careers events organised by departments across the University.

## **Surrey Pathfinder**

As a Surrey student, you'll have access to a range of resources to enhance your employability. Surrey Pathfinder is a digital space where you can find everything from careers appointments and event bookings, to jobs listings, placements and interactive development tools.



## Workshops

Whether you want to improve your networking skills or need some support writing your CV, our dedicated Employability and Careers team is here to help. A variety of workshops are available to give you the information, tools and techniques to identify career options, make effective applications and improve your interviewing skills.

## Employability Award

You can choose to complete the Employability Award, which gives students recognition for activities that develop employability skills. The Award will help you to prepare for entering the graduate job market and is a valuable addition to your CV.

## In-house agency

Looking for extra work experience? Unitemps is the University's in-house job agency and can help you find temporary work across campus and at local companies in and around Guildford.

## Alumni access

For up to three years after you graduate, you'll be able to get one-to-one appointments with our Employability and Careers service, as well as lifetime access to Surrey Pathfinder.

To find out more about employability and careers, visit: [surrey.ac.uk/employability-and-careers](https://surrey.ac.uk/employability-and-careers)



# GRADUATE CAREERS



**Jay Cadman,**

MSc International Corporate Finance  
(graduated 2018)

“There is a wealth of knowledge and experience among the academics at Surrey. Any student hoping to make it in finance should not only use this opportunity to learn from experts, but also to practise and test their understanding and casual conversation skills in finance. This will help them immensely when they begin interviewing for roles after their degrees.

In addition, network, network, network! In my experience, the students that found more relevant or interesting roles were made aware of the role or even sponsored for it by contacts they'd met through networking. Surrey put on loads of networking opportunities - go to as many as you can and talk to anyone and everyone!”



**Chutima Termsuk,**

MSc Medical Physics (graduated 2019)

“One of the things I found most valuable was the site visits we went on to hospitals, which enabled us to see how medical physicists work in the real world.

Undertaking the dissertation as part of the course was also a good experience, and it was great to be able to choose from a range of different projects recommended by our supervisor.”

**Inacio Lote Gimo,**

MSc Electronic Engineering (graduated 2019)

Inacio studied part-time from his home in Mozambique, with regular visits to the University of Surrey campus.

“Throughout my course I felt very much part of the University. Spending time in the laboratories at Surrey meant I knew who to contact when I was back at home. The professors and lecturers were very helpful and responsive. They helped pre-book the facilities for short courses to ensure students had good access to them.

I found there was a good sense of community with other part-time students. Almost all of the students doing short courses exchanged their contact details and we organised a group chat which allowed us to support each other.”



# OUR TEACHING EXCELLENCE

Our community of exceptional academics continually work towards inventive solutions, such as improving global wellbeing, creating sustainable cities, communities and economies, and connecting societies and cultures. Our leading facilities, innovative teaching and focus on applied research allows students at Surrey to make discoveries of their own.

As a postgraduate student at Surrey, you'll be part of a passionate and collaborative community that's making a profound and lasting impact on the world.

Many of our academics use their research to improve the world we live in and to enrich your education. This means your course will be led by informed and inspiring researchers who bring industry-relevant problems into lectures.

## **Industry-standard learning environments**

We invest heavily in our research buildings to offer you the best facilities and equipment to work with. Our £45m School of Veterinary Medicine and £12.5m Innovation for Health buildings are some of the latest additions to our campus.

Study for a masters in electrical and electronic engineering at Surrey and you'll have the opportunity to work within one of our world-leading research centres: the Institute for Communication Systems (home to our 5G Innovation Centre, the UK's largest academic centre for research into next generation communications), the Centre for Vision, Speech and Signal Processing, the Surrey Space Centre, and the Advanced Technology Institute.









And learning is not limited to classrooms and lectures. On many of our courses, you'll be able to apply what you learn in our outstanding simulated work environments and learning spaces.

In our School of Health Sciences, you'll build your clinical skills in our state-of-the-art Simulation Centre and take part in projects involving actors to enhance your clinical communication skills.

### **Internationally-renowned research**

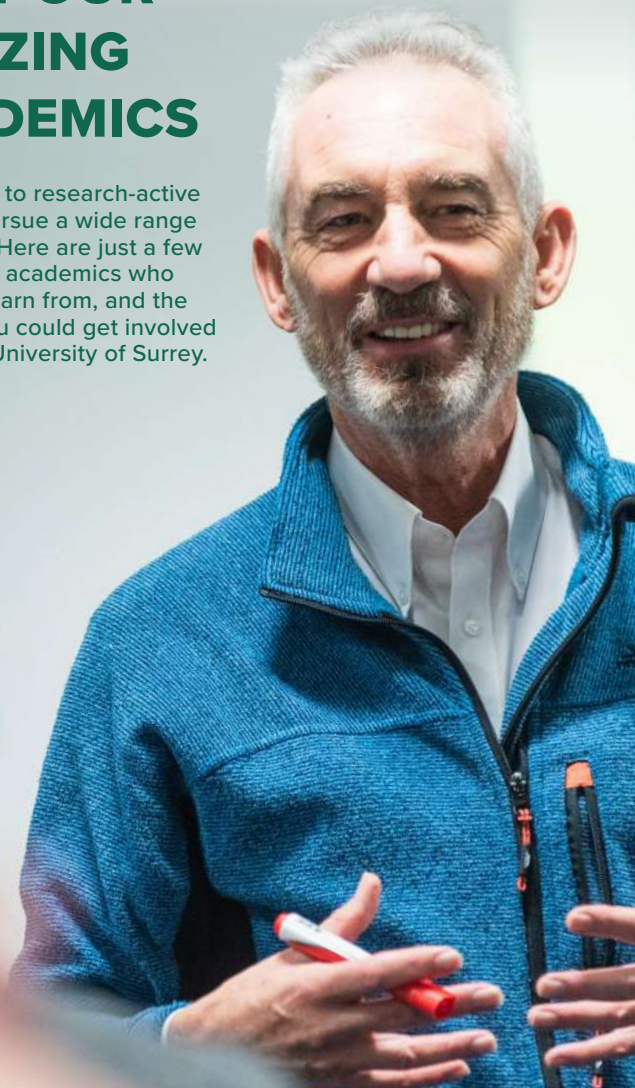
At Surrey, you'll learn from academics who are experts in their fields. Many remain active in their professions, and because they're always developing their knowledge, they'll teach you all the most up-to-date information you need to know to help you get started in your career.

As a postgraduate student, you'll have opportunities to join research groups, complete a dissertation project and collaborate with research partners across the world.



# MEET OUR AMAZING ACADEMICS

We're home to research-active staff who pursue a wide range of projects. Here are just a few examples of academics who you could learn from, and the research you could get involved with at the University of Surrey.





### Forwarding the frontiers of nutrition

**Dr Adam Collins** is a Senior Teaching Fellow in Nutrition and has been a qualified Nutritionist for over 20 years. He's published articles in the *British Journal of Nutrition*, the *European Journal of Clinical Nutrition* and the *International Journal of Obesity*.

Adam teaches on our BSc (Hons) Nutrition and MSc Human Nutrition courses, sharing his expertise in biochemistry, metabolism, nutritional physiology, and sports and exercise nutrition.

He has great industry links and runs his own private nutrition consultancy, as well as working as a Nutritional Consultant for major UK nutrition brands and start-ups. He's also an active member of the Association for Nutrition (AfN).

Adam's goal is to forward the frontiers of nutrition by applying research to a wider audience and getting better recognition for nutrition professionals.



### Training the next generation of healthcare professionals

**Roz Clegg** is a Teaching Fellow in Physician Associate Studies and has been a qualified Physician Associate for 8 years. Her background is in emergency medicine, general practice, orthopaedics and trauma. As a practicing healthcare professional, Roz supports doctors in the diagnosis and management of patients by taking medical histories, performing examinations and analysing test results.

Roz teaches on our PGDip Physician Associate Studies course, covering topics including anatomy, clinical skills and communication. She shares her expertise and knowledge to provide an honest insight into the field.

Roz's goal is to increase national awareness of physician associates and to train the next generation of healthcare professionals.



## Using clean energy

**Professor Ravi Silva** is the Director of Surrey's Advanced Technology Institute and heads its Nano-Electronics Centre.

Under his leadership, these multi-disciplinary hubs have been at the forefront of energy research. Recent successes include innovations in fast-charging super-capacitors and perovskite solar cells.

"A great problem faced by humanity is clean energy supply," says Ravi. "The Earth receives enough energy from the Sun in an hour to power humanity for a whole year. But how do we make full use of this resource? Solving this problem is one of the issues that drives me."

As well as being a leader, mentor and teacher, Ravi is an award-winning scientist in the field of nanotechnology, most recently winning the James Joule Medal from the Institute of Physics.

He's also worked with the Sri Lankan government to establish nanotechnology to help raw materials and alleviate poverty in the country.





## From artificial intelligence to financial crises

**Professor Bonnie Buchanan** is the Head of the Department of Finance and Accounting at Surrey Business School.

She was a Fulbright Specialist in Russia and has also presented testimony before the United States House of Financial Services.

Bonnie's areas of expertise and research interest include finance and technology (FinTech), artificial intelligence (AI) in financial services, securitisation, corporate social responsibility and the history of financial crises.

"I'm drawn to the cutting-edge digital economy research at Surrey and I'm fascinated by the economic and societal implications that FinTech and AI will have," says Bonnie. "I love teaching at Surrey because of my interaction with colleagues and students from around the world who have such diverse backgrounds. Education should be a transformational experience, and at the Surrey Business School, students have the opportunity to develop skills in strategic thinking, quantitative skills and leadership."



# STUDENT LEARNING SUPPORT

Experiencing university life is exciting, and at Surrey we do everything we can to support you throughout your time here. Whether you prefer online advice or talking to someone in-person, we've got you covered.

## One-to-one support from your tutors

Throughout your studies, you will have one-to-one support from your tutors to help with your academic, personal and professional development.

## MySurrey

Our MySurrey website gives you access to all of our support and advice, 24 hours a day, on everything from money to mental health.

[my.surrey.ac.uk](http://my.surrey.ac.uk)

## Free digital textbooks

We'll be providing postgraduate taught students with free, digital copies of essential textbooks. This is part of our commitment to making university more accessible, enabling you to learn in a more digital environment.



MySurrey  
hive





## MySurrey Hive

MySurrey Hive is a place to get advice on all aspects of student life - from accommodation to finance - and information on University support services. You can ask our friendly team any questions you may have, either in-person, on the phone, or through our online chat service. The space is also a great place to meet friends for informal study and to socialise.

Visit us: Stag Hill campus  
(Phillip Marchant Building -  
a short walk from the Library)

+44 (0) 1483 686 868

[hive@surrey.ac.uk](mailto:hive@surrey.ac.uk)

[my.surrey.ac.uk/hive](https://my.surrey.ac.uk/hive)

## Library

Our Library is the academic heart of our campus. You can explore hundreds of thousands of books, journals, audio and image collections, helping to empower your research.

We also have a multimillion-pound collection of online resources which can be easily accessed on or off campus.

Our Library contains study spaces to cater for all needs, including silent rooms, group areas and bookable rooms designed for collaborative group study.

[surrey.ac.uk/library](https://surrey.ac.uk/library)

## SurreyLearn

SurreyLearn is an online platform that gives you access to lecture and seminar learning materials, information on your chosen course and modules, and feedback from teaching staff. You can also take part in discussion forums, quizzes, tests and online assignments.

You will be given access to SurreyLearn during registration week, once you join the University.

## Improving your academic skills

Our Academic Skills and Development department is based on Level 1 of the Library. Our Learning Development Advisers can work with you on a whole range of academic skills, including your writing, presenting, revision and time management. And our Learning Development Librarians can help you access the right resources for your studies, supporting your research and using these in your work effectively.

In addition to face-to-face workshops and appointments, you can find online tutorials and resources through the 'Masters Interactive' section of SurreyLearn.



### Support for disabled and neurodiverse students

Our Disability and Neurodiversity team is based in the Library. If you have a disability, specific learning difference (such as dyslexia, dyspraxia or AD(H)D), a mental health condition, autism, a mobility or sensory impairment or a long-term health condition, we recommend you contact the team as soon as you can. They can advise you on the support available as well as your eligibility for financial assistance through the Disabled Students' Allowance. You can meet with a Disability Adviser confidentially to find out more. The team can arrange for you to have adjustments to your studies, such as extra time in exams, enabling you to reach your full potential during your postgraduate studies with us. Email us at: [disability@surrey.ac.uk](mailto:disability@surrey.ac.uk)

# WHAT IT'S LIKE LEARNING AT SURREY

Our current students share what they love about learning at Surrey and some of the support on offer.

## Support for international students

"The academic staff are amazing and always available for anything you need. They are very passionate about what they teach and share the same passion with their students.

The University also gives non-UK students the opportunity to have English Language support classes which is very helpful. As an international student, I'm very proud that I could learn in a language different from my own and obtain good results.

I've changed a lot. I feel much more confident and focused on what my goals are."

**Llaria Bo**  
MSc Sustainable Development





### **Renowned academics**

“I’d heard a lot about the pioneering research being done at Surrey, particularly in the 5G Innovation Centre. This was behind my decision to study Electronic Engineering here.

What I’ve enjoyed most about my course is the way you’re encouraged to develop self-learning skills, the exposure you get, and the facilities you get to use, which reflect the latest developments that are going on in the technical world. The academic staff include some of the leading figures in mobile communications, who are known all over the world.”

**Vikrant Singh**  
**MSc Electronic Engineering**



## A caring community

“On the MA, we’ve been well supported by our personal tutor; she was present at all of our auditions and has been rooting for us since then! We have regular tutorials with her to check in and she cares so much about our wellbeing and development. Many members of faculty are also mental health first aiders and there is very much a family feeling amongst the staff and students. When my personal tutor hasn’t been available, there have always been many options of other supportive staff members on hand to provide a listening ear and helpful advice.”

**Clare Plumridge**  
MA Acting





### **Excellent learning support**

“I really enjoy applying my knowledge to practice, when seeing a patient while on placement.

My lecturers are knowledgeable, supportive and approachable - many of them are GPs and there’s also a qualified Physician Associate, who’s given me great insight into what the profession is really like.

We have guest lectures from experts in the field, so you know you are receiving the best quality teaching. It is an intense course and you have to work really hard, but when I look back on how much I’ve learnt since the beginning of the year – it’s a huge achievement and I’m pretty proud of that.”

**Claire Bowman**  
PGDip Physician Associate Studies



# LIVING AT SURREY

We want you to feel at home at Surrey, whether you're living on campus or are moving into private accommodation. If you're moving to the UK for the first time, or want the convenience of living on campus, we offer a range of accommodation.

## Living on campus

Living in student accommodation as a postgraduate student is a great way to meet new people, spark friendships and get settled in as you begin this new chapter of your life.

Arranged in 'Courts of Residence' (groups of self-catered housing) and priced to suit different budgets, our accommodation has been designed to be comfortable and secure.

We guarantee accommodation if you're a new postgraduate student who pays international fees for your first year of study, if you apply for accommodation by 1 August 2021 and have met the conditions set out in our allocation policy. Please note that we review our policy each year and it is subject to change. For more information and for full terms and conditions, please visit: [surrey.ac.uk/accommodation/applying](https://surrey.ac.uk/accommodation/applying)

For most students, rent is usually payable for 50 weeks per year. The annual cost for 2020-21 ranges from £3,672 for a shared or basic single room to £7,803 for an en-suite room. The latest prices are published on our website in spring: [surrey.ac.uk/accommodation/prices-and-payment](https://surrey.ac.uk/accommodation/prices-and-payment)

## Living outside the University

If you need to make your own housing arrangements off campus, our experienced University of Surrey Lettings (USL) team can help you to find a suitable place to live in the Guildford area. They won the prestigious 'Student Experience' award at the Guardian University Awards 2018, and overall Best Letting Agent of the Year Award 2019 from the London Landlords Accreditation Scheme.

For more information, visit:

[surrey.ac.uk/lettings](http://surrey.ac.uk/lettings)

## Feel at home

Our Stag Hill campus offers a variety of facilities and places to socialise and enjoy a drink, snack or hot meal.

Enjoying all the benefits of the Courts of Residence on Stag Hill campus, our accommodation at nearby Manor Park is in an area of great natural beauty. Designed as a car-free student village with a subsidised bus service, Manor Park offers a first-class learning and living environment and has a café/bar located within the reception block.

If you're looking for a more cost-effective option, you might find it at Hazel Farm, which has rooms 3km from campus and a bus pass included in your rent.







### Keeping you safe

As well as having a Security team on campus 24 hours a day throughout the entire year, all our accommodation has a residential warden service, ensuring that you feel safe and secure. They are there to help you with any aspect of life in University accommodation.

Peer Supporters are also available to help you settle in, make friends and keep you busy with social activities. Our dedicated team will also work with you to create a positive living experience for everyone on campus.



# OUR ACCOMMODATION

We have more than 6,000 rooms of various types to suit all budgets and requirements. Rooms are banded from A to F according to price and amenities, from shared rooms to enhanced en-suite rooms and a limited number of family flats for students with dependants.



- Our accommodation includes on-site central launderettes
- More than half of our rooms have en-suite shower and toilet facilities
- About half of our accommodation is on our Stag Hill campus
- Manor Park, situated 1.6km away (20 minutes' walk or a short cycle ride), has over 3,000 en-suite rooms, a café and easy access to Surrey Sports Park
- Your rent includes utilities, broadband, cleaning of communal areas and contents insurance
- You'll share a kitchen-dining room with other students
- We offer communal areas, some with TVs
- Most of our lower-cost housing is available at Hazel Farm which is located on the outskirts of Guildford



- Most accommodation is mixed sex, but you can request to live in a single-sex flat if you wish
- All of our accommodation buildings have secure access
- Specially adapted rooms are available for students with disabilities. Please contact our Disability and Neurodiversity team to discuss your needs: [disability@surrey.ac.uk](mailto:disability@surrey.ac.uk)
- We have a limited amount of family accommodation if you would like to live with children or a partner, although we can't guarantee we'll have space available. To find out more, please visit: [surrey.ac.uk/accommodation/our-accommodation/family-flats](https://surrey.ac.uk/accommodation/our-accommodation/family-flats)



“Life at Surrey is good. There are a number of different societies where students can find others with whom they share mutual interests. The inclusive nature of the community here allows anyone to feel comfortable and get the most out of their time here. No matter your age, nationality, background, or political ideology, Surrey makes you feel like you are part of the community. The University also offers a variety of student support facilities, like MySurrey Hive, which helps students every step of the way.

Surrey cares for its students and this is evident.”

**Theodora Adam**  
MSc International Corporate Finance



"I studied for my undergraduate degree here and of all the places I have lived, Guildford amazes me with just how quickly it can become a part of you. The campus and the community here are beautiful. The people I met at the University of Surrey Boat Club are now friends for life and those initial few meetings I had with the programme directors, where they gave me the confidence to choose this course, were vital for clarity in what is an uncertain time for every student. All of that convinced me that there would really be nowhere else like it."

**Shahbaz Kamran Khan**  
MSc International Relations

# OUR CAMPUS IN THE SURREY HILLS

## Our campus community

At Surrey, we have everything you need for your studies and beyond.

You can find a quiet place to work in the Library, study and relax with friends in MySurrey Nest, walk by the lake, visit our food market, or try out our impressive sports facilities – all without leaving campus. We also have an award-winning convenience store, cashpoints, a launderette, post office, bookshop and a health centre. For everything else, Guildford and its shopping centres are nearby, ready for you to explore.

## Green spaces

Our Estates team not only keep the campus grounds looking great, they also work alongside staff and students to create a safe environment for many forms of wildlife. There are more than 50 bird boxes and several beehives, and we have officially become a hedgehog-friendly campus.

Green-fingered students also have the chance to grow their own fruit and vegetables in the community

garden managed by the University of Surrey Garden Society. This space doubles as a relaxing recreational area too.

## Eating and drinking

The University has plenty of places where you can have lunch or meet friends for a coffee.

On our Stag Hill campus, you can visit Starbucks, ThEATre, The Hideout, or Lakeside Coffee Shop, while Hillside Restaurant offers a range of fresh food. The campus also has its own à la carte restaurant, Lakeside, run by our very own hospitality students. Wates House, our campus bar, serves a menu of fresh seasonal food accompanied by craft beers. We also have a weekly farmers' market every Thursday at our Students' Union, selling food from local suppliers.

On our Manor Park campus, Heart + Soul is open all day, making it the perfect place to try our speciality burgers or socialise with friends over a drink. The Heart + Soul coffee shop is also the ideal place for your morning coffee.







## **Shops and services**

Our SimplyFresh shop on campus sells local, international and organic food products, and also houses a cashpoint. Appleseed offers a one-stop shop for academic books, printing, stationery, merchandise and souvenirs. We've also got a post office and launderette on campus. A large Tesco supermarket is located between Stag Hill and Manor Park, which you can walk to within fifteen minutes.

We also offer a free and confidential service at our Centre for Wellbeing on campus, to help with emotional and mental health issues.

## **Art, music and culture**

The University is home to a thriving arts community. Our very own Guildford School of Acting is home to some of the best professional training facilities in a UK conservatoire.

Along with our Performing Arts Technology Studios, the Ivy Arts Centre hosts an exciting programme of events featuring professional visiting artists and companies, and student performers. We also have an on-campus art gallery, the Lewis Elton Gallery, which hosts a series of exhibitions and installations.





# STAG HILL



- **Guildford train station:** 10-minute walk or 5 minutes by bus
- **Manor Park, Tesco, Surrey Sports Park:** 15 to 30-minute walk or 9-13 minutes by bus



- **Guildford town centre:** 15-minute walk or 10 minutes by bus
- **Hazel Farm accommodation:** 25-40 minutes by bus



# MANOR PARK



School of  
Health Sciences

Get active at Surrey  
Sports Park, head to the  
sports bar or grab a coffee

Live right here  
on campus

- **Guildford train station:** 22 minutes by bus
- **Tesco:** 10-minute walk or 8 minutes by bus



- **Guildford town centre:** 22 minutes by bus
- **Hazel Farm accommodation:** 18 minutes by bus



# OUR LOCATION IN THE UK

## **Take it international**

Guildford is a great location for journeys to the rest of the UK or abroad - whether you're an international student looking to make trips home, or simply wanting to explore the south east or the wider UK further.

Close to London with its excellent global transport links, the major international airports at Heathrow and Gatwick are both within easy reach too.



**34**

minutes  
to London  
(by train)

**30**

minutes to  
Heathrow Airport  
(by car)

**50**

minutes to the  
south coast  
(by car)

**40**

minutes to  
Gatwick Airport  
(by car)

● **Edinburgh**

● **Manchester**

● **Liverpool**

● **Birmingham**

**London**

LHR ✕ ●

✕ LGW

● **Brighton**

**GUILDFORD**

# GUILDFORD: OUR HOME AND YOURS

Guildford lies mid-way between London and Portsmouth. A bustling English town, Guildford is surrounded by nature and the Surrey Hills, and has been voted as one of the best places to live in the UK in recent years.

## Where we are

Whether you want to travel by foot, bus, bike or car, you can get from the University to Guildford's thriving town centre or mainline train station in a very short amount of time. London Heathrow and Gatwick airports are also within drivable distance.

## What will you discover?

From 100+ restaurants, bars and pubs, to great music venues and ultra-modern industry, Guildford is a vibrant mixture of the old and the very new. It's also home to some of the best retail shopping in the area.



For those interested in history, Guildford has an intriguing past and is home to a beautiful medieval castle. If you're inspired by arts and culture, the town also has numerous art galleries, music spaces and performance venues, including three theatres and a cinema. And for something more active, you can visit the ice rink at Guildford Spectrum or the Lido (outdoor swimming pool), which is ideal in the summer months.



## Surrey and the south east

Outdoors, the local area offers stunning landscapes. One day you could be taking a relaxing walk through the Surrey Hills, the next you could be riding a zip wire, paintballing in the woods or mountain biking through the countryside. For the thrill-seekers, nearby theme parks Chessington World of Adventures and Thorpe Park (in Chertsey) offer the perfect escape.

You can also reach Brighton beach or ancient Stonehenge in under 90 minutes from Guildford, and discover Tudor history at Hampton Court Palace in less than 40 minutes.

To explore more, visit:  
[surrey.ac.uk/guildford](http://surrey.ac.uk/guildford)

# LONDON: ONLY 34 MINUTES AWAY

London is one of the greatest, most iconic cities in the world – and it's just a 34-minute train ride away.

**London Zoo**  
CAMDEN TOWN



**Oxford Street**  
OXFORD CIRCUS



**Nelson's Column**  
CHARING CROSS



**Westfield shopping**  
SHEPHERD'S BUSH



**Buckingham Palace**  
HYDE PARK CORNER



**Science Museum,  
Victoria and Albert Museum,  
Natural History Museum**  
SOUTH KENSINGTON



**Houses of  
Parliament**  
WESTMINSTER



**London Eye**  
WATERLOO



**Battersea Power Station**  
VAUXHALL



You could eat like a local, take in some history, do some sightseeing, or visit one of London's many galleries and museums.

For sport lovers, there is nothing that compares to the tennis at Wimbledon, the rugby at Twickenham, or a football match or NFL game at Wembley. With a direct train line from Guildford into London Waterloo, you can be at the centre of everything in no time at all.

🚇 Nearest Tube station

**St Paul's Cathedral**

ST PAUL'S



**Tower of London**

TOWER HILL



**Shakespeare's**

**Globe theatre**

BLACKFRIARS



**Tate Modern gallery**

SOUTHWARK



**Canary Wharf**

CANARY WHARF





# A GLOBAL COMMUNITY OF IDEAS

We are proud to be one of the most culturally diverse universities in the UK – more than a third of our students are international, coming to us from over 140 different countries.

Surrey is guaranteed to broaden your mind – your experience of another culture and a different way of thinking will help prepare you for the modern world's globalised workplaces.

## A warm welcome

This may not be your first experience of university or travelling alone, but it could be your first time living away from your home country. No doubt you're excited to arrive here and get started, so we'll help to ensure your journey here is as quick and stress-free as possible.

Our Welcome team can meet you at our nearest airports, Heathrow and Gatwick, on selected days. After meeting with you, they will either take you directly to your campus from Heathrow or help you onto a train to Guildford from Gatwick. Helpfully, Guildford Station is just a short walk from our Stag Hill campus.





This service is free, all you need to do is register online before you travel. Full details about airport pickups can be found at:

[surrey.ac.uk/predeparture](https://surrey.ac.uk/predeparture)

Did you know that international and EU students are invited to arrive at Surrey a few days before other students? This is so you can attend our International Orientation programme, which prepares you for the start of your studies with us, covering information about visas, working in the UK, registration and social events.

### **Entry and application**

For details of our international student application process, please visit:

[surrey.ac.uk/apply/international](https://surrey.ac.uk/apply/international)

### **Working in the UK**

For information on working in the UK, please visit:

[visas.surrey.ac.uk/visa-responsibilities](https://visas.surrey.ac.uk/visa-responsibilities)

### **Chat with our international team**

Our International Recruitment team run regular live chats, virtual exhibitions and webinars to give you all the information and support you need.

If you're interested in learning more about upcoming events, please visit our website:

[surrey.ac.uk/international](https://surrey.ac.uk/international)



### **Taking your family with you**

You can bring family members with you to the UK while you study if you meet certain conditions, such as if you're studying a full-time course that lasts a year or longer. We have a limited amount of family housing available for international students with dependants. It could be that you choose housing located off campus as an alternative. If so, we recommend that you travel to the UK alone to begin with, to find suitable accommodation and get more organised before inviting your family to join you in the UK.

### **Languages and Culture Exchange Scheme (LACES)**

Why not make the most of our friendly community of international students? You could learn a new language or further develop your skills in one you already know.

Our LACES network provides a free way for you to find people interested in learning your language and happy to teach you theirs. It's a great way to meet new people from your home country or from other parts of the world. For more information, visit:

[surrey.ac.uk/laces](http://surrey.ac.uk/laces)

### **Global Graduate Award in Languages**

If you want to improve your language skills and be recognised for your hard work, our Global Graduate Award in Languages could be for you. The programme is open to all students who study with us and you can choose from 11 different languages at various different levels. After finishing one of these free courses, you'll receive a certificate which validates your successful completion. For more information, visit:

[surrey.ac.uk/gga](http://surrey.ac.uk/gga)

# CLUBS, SOCIETIES AND SPORTS AT SURREY

## Students' Union

The Students' Union is at the heart of our student community. Run by a team of elected students, they provide an incredible programme of activities, entertainment and volunteering opportunities, including a choice of over 180 sports clubs and societies, from boxing and netball to Bollywood and the Postgraduate society.

As the sole representative body for Surrey students, the Union gives its members a voice, as well as offering advice and support, should you need it. To find out more about how the Students' Union can enhance your university experience, visit: [ussu.co.uk](http://ussu.co.uk)

## Events on campus

There are many fantastic events on campus which bring together students from all different backgrounds and cultures. The Students' Union and its societies also hold several events and activities throughout the year. Find out more at:

[ussu.co.uk/events](http://ussu.co.uk/events)

## Exceptional sports facilities

One of the best things about sport at Surrey is that you don't have to be an athlete to get involved. We encourage you to enjoy a healthy and active lifestyle, meet new people and have fun – no matter your fitness or experience level. Our range of sports, dance and group fitness classes is one of the largest and most diverse of any UK university.



## Surrey Sports Park

Surrey Sports Park is one of Europe's leading sports venues and the home of Team Surrey. Whether you join for fun, health or competition, become part of something bigger with access to all areas of our world-class facilities.

With a number of Surrey Sports Park student membership options to choose from and a community of like-minded sporty friends to make, you'll be winning before you've even laced up your trainers. As a Surrey student you'll benefit from discounted membership, giving you access to a wide variety of facilities, classes and activities, and the opportunity to join sports clubs and represent Team Surrey. Find out more at:

[surrey.ac.uk/sport](http://surrey.ac.uk/sport)





## Team Surrey

Team Surrey is at the heart of all sport and fitness at the University, and offers over 40 sports clubs for you to join, from American football to weightlifting. Whether you're looking to represent the University in your sport, try out a new gym class, or even just enjoy walking to lectures, you'll be welcomed into the team's blue and gold community.

To find out more, visit:

[teamsurrey.co.uk](https://teamsurrey.co.uk)

## Sport scholarships

You could also be eligible for one of our sports scholarships, depending on your performance level. The scholarship supports you with a mix of athlete services, expenses to support sporting costs and a cash bursary where appropriate.

For more information, visit:

[teamsurrey.co.uk/performance/scholarships](https://teamsurrey.co.uk/performance/scholarships)







### **Sport and societies**

“My favourite part about the University is Surrey Sports Park, something that I was excited about even before arriving. It’s a walkable distance from the accommodation, so I can easily enjoy classes and maintain a gym routine.

Back in India, I was never as independent as I am here. Living with students from other nationalities, becoming best friends with complete strangers, and learning to cook; all of this has been quite a journey for me. I am now more confident that I can adapt well to any situation.

I also lived with five dogs back at home, so after moving here there were times when I missed them terribly. Going on the weekly dog walks organised by the PetSoc made me feel much better.”

### **Keerthana Ravi**

**MSc International Tourism Management**

### Team Surrey

“I’m part of Team Surrey’s water polo team, a representative for my course, as well as a student ambassador. I’m a member of some student societies and I find social life at Surrey really engaging and exciting. I have the best flatmates ever! Guildford is also a really nice and peaceful town, as well as having some nightclubs and pubs that guarantee a party.”

### Elena Rosina

MSc International Event Management



# YOUR HEALTH AND WELLNESS

## Health and wellbeing

We want you to be healthy and happy during your time at Surrey. Your physical and emotional health are important and looking after both will ensure you get the most out of university life. As a Surrey student, you'll have easy access to a number of health and wellbeing services.

## Student health

The Student Health Centre on Stag Hill campus is one of the local NHS GP practices. You'll be able to access a number of health services from here.

We recommend that all students register with a local doctor as soon as they arrive. There are five local practices that cover the University campus and surrounding area.

- The Student Health Centre
- Woodbridge Hill Surgery
- Dapdune House Surgery
- Fairlands Medical Practice
- St Luke's Surgery.

You can use the NHS service on [nhs.uk](https://www.nhs.uk) or call **0300 311 22 33** for more information.

For all health advice, call **111**.

offee,  
wards

as an aircraft design  
ation of Concorde.  
ence on the Unive  
his spa





a think.  
meetin

er and industrialist  
As Pro-Chancellor  
rsity which is still



### Chaplaincy

There are several places of worship on Stag Hill and Manor Park. Our chaplains are from all faiths and beliefs and offer confidential, one-to-one care.

[campus.surrey.ac.uk/faith-and-spirituality](https://campus.surrey.ac.uk/faith-and-spirituality)

### The Centre for Wellbeing

Our Centre for Wellbeing is a place where you can get support and advice for a personal, emotional or psychological issue. We also offer a number of free and confidential services including workshops providing techniques to help combat stress and enhance wellbeing.

### Peer Support team

Peer Supporters are all experienced students, fully trained in effective communication and mental health awareness. They'll provide a non-judgemental listening and support service to help make your student experience the best it can be.

For more information on health and wellbeing support, please visit:

[wellbeing.surrey.ac.uk](https://wellbeing.surrey.ac.uk)

# SUSTAINABILITY AT SURREY

At Surrey, we're committed to developing our students' awareness of sustainability, leading on sustainable research and setting ourselves ambitious targets to reduce our environmental impact.

We've signed the UN Sustainable Development Goals (SDGs) Accord and report annually on our progress.

We're also ranked 59th in the world for our performance against the SDGs, which recognises our contributions to society on a global scale.

## Net zero emissions by 2030

Our goal is to achieve net zero carbon emissions by 2030. To do this, we'll be reducing our demand, increasing on-site renewable energy generation, increasing the amount of energy purchased from clean sources, and considering how we can offset remaining carbon emissions.

## Teaching and research

Sustainability is one of Surrey's key research themes, with organisations such as our Centre for Environment and Sustainability and our Global Centre for Clean Air Research conducting vital studies in this field. Our staff and students are leading the fight for a more sustainable future, from developing solar cells, to removing microplastics from marine environments.

We also offer a free extracurricular module, the 'Global Graduate Award in Sustainability', so students can gain an in-depth understanding of the issues affecting our planet.

FIGURES COMPARED TO THE  
2017-18 ACADEMIC YEAR

# 87,000

SINGLE USE CUPS

DIVERTED FROM WASTE

(by introducing a charge on single use coffee cups)



# 99%

OF WASTE DIVERTED

FROM LANDFILL



# 5

ELECTRIC VEHICLES

(introduced to the University fleet)

# 2%

REDUCTION IN

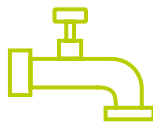
ELECTRICITY USE



# 12 million

LITRES OF WATER SAVED

(through the introduction of PIR sensors across 26 washrooms)





### **Saving water**

We're investing in projects to reduce our water use, and we've already saved over 12 million litres! A new borehole on campus will also relieve pressure on local water networks and reduce carbon emissions.

### **Reducing single-use plastic**

Our long-term goal is to have all staff, students and visitors use a reusable cup or bottle across campus. We've replaced single-use plastic cups with plant-based options and are increasing the number of refill points. Compostable packaging has also been introduced across all our catering outlets.

A 10p charge on all single-use coffee cups is reducing waste and raising money to be reinvested into sustainability initiatives.

### **Greener travel**

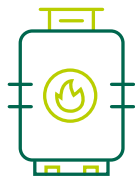
50+ loan bicycles have been installed across our campuses, with plenty of cycle parking and a bike shop encouraging more students to travel by bike.

## Working with students

Engaging with our students is at the heart of our sustainability policies - our students are helping shape our strategies through meetings and feedback.

There are various ways students can get involved in sustainability at Surrey, ranging from events, campaigns, societies (including a community garden) and volunteering opportunities.

To find out more about our work visit:  
[surrey.ac.uk/sustainability](https://surrey.ac.uk/sustainability)



**7%**

REDUCTION IN

GAS USAGE



**60%**

ADDITIONAL FOOD WASTE

BEING SEPARATED AND COMPOSTED



**6%**

REDUCTION IN

CARBON EMISSIONS\*

(including all new buildings)





# OUR COURSES

By studying a postgraduate degree with us, you're seizing an opportunity to stand out from the crowd, realise your career potential and become part of changing the world for the better.

## Study options

Our postgraduate courses offer a wide range of options. For the full A-Z list of our taught courses, visit:

[surrey.ac.uk/postgraduate](https://surrey.ac.uk/postgraduate)

Availability of all courses may be subject to demand.

Many courses have additional entry requirements which may include important skills, experience or a specific undergraduate degree subject.

For full and up-to-date availability, course length and entry requirements please check our website:

[surrey.ac.uk/postgraduate](https://surrey.ac.uk/postgraduate)



For more information visit:  
[surrey.ac.uk/postgraduate](https://surrey.ac.uk/postgraduate)

Subject area

Study options

### Accounting and finance

Accounting and Finance MSc

Full-time or part-time

### Biosciences

Food Science MSc

Full-time

Human Nutrition MSc

Full-time

Medical Microbiology MSc

Part-time

Nutritional Medicine MSc

Part-time

### Business and management

Master of Business Administration MBA

Full-time or part-time

Business Analytics MSc

Full-time or part-time

Business Economics and Finance MSc

Full-time or part-time

Digital Marketing and  
Channel Management MSc

Full-time or part-time

\*You can choose to study this course with a Professional Training placement or study abroad option. Please note that the English language requirement may be different for this option, see the course page on our website for further details.

English language requirements (IELTS equivalent)

Minimum UK  
honours degree

Placement option

6.5 overall, 6.0 in each component

2:2

6.5 overall, 6.0 in each component

2:2

6.5 overall, 6.0 in each component

2:2

7.0 overall, 6.5 in each component

2:2

6.5 overall, 6.0 in each component

2:1

6.5 overall, 6.0 in each component

2:1

6.5 overall, 6.0 in each component

2:2



6.5 overall, 6.0 in each component

2:1

6.5 overall, 6.0 in each component

2:2



For more information visit:  
[surrey.ac.uk/postgraduate](https://surrey.ac.uk/postgraduate)

Subject area

Study options

Business and management	
Entrepreneurship and Innovation Management MSc	Full-time or part-time
Human Resources Management MSc	Full-time or part-time
International Business Management MSc	Full-time
International Corporate Finance MSc	Full-time or part-time
International Economics, Finance and Development MSc	Full-time or part-time
International Financial Management MSc	Full-time
International Marketing MSc	Full-time
Investment Management MSc	Full-time or part-time
Management MSc	Full-time or part-time
Management Education PGCert	Distance learning
Occupational and Organizational Psychology MSc	Full-time
Intercultural Business Communication and Marketing MA	Full-time or part-time

\*You can choose to study this course with a Professional Training placement or study abroad option. Please note that the English language requirement may be different for this option, see the course page on our website for further details.

English language requirements (IELTS equivalent)

Minimum UK  
honours degree

Placement option

English language requirements (IELTS equivalent)	Minimum UK honours degree	Placement option
6.5 overall, 6.0 in each component	2:2	
6.5 overall, 6.0 in each component	2:2	✓*
6.5 overall, 6.0 in each component	2:2	
6.5 overall, 6.0 in each component	2:2	
6.5 overall, 6.0 in each component	2:1	
6.5 overall, 6.0 in each component	2:2	
6.5 overall, 6.0 in each component	2:1	
6.5 overall, 6.0 in each component	2:2	✓*
7.0 overall, 6.5 in each component	2:2	✓**
7.0 overall, 6.0 in each component	2:2	
6.5 overall, 6.0 in each component	2:1	
6.5 overall, 6.5 in writing, 6.0 in each other component	2:2	

\*\*You can choose to study this course with a Professional Training placement or study abroad.

For more information visit:  
[surrey.ac.uk/postgraduate](https://surrey.ac.uk/postgraduate)

Subject area

Study options

### Communication, language and translation

Interpreting MA	Full-time
Interpreting (Chinese Pathway) MA	Full-time
Translation MA	Full-time or part-time
Translation and Interpreting MA	Full-time or part-time
Translation and Interpreting Studies MRes	Full-time or part-time

### Computer science

Data Science MSc	Full-time
Information Security MSc	Full-time or part-time

### Criminology and sociology

Criminology MSc	Full-time or part-time
Criminology (Corporate Crime and Corporate Responsibility) MSc	Full-time or part-time
Criminology (Cybercrime and Cybersecurity) MSc	Full-time or part-time
Social Research Methods MSc	Full-time or part-time



English language requirements (IELTS equivalent)	Minimum UK honours degree	Placement option
6.5 overall including 6.5 in writing and speaking, and 6.0 in each other component	2:2	
7.0 overall with 6.5 in speaking and writing and 6.0 in each other component	2:2	
6.5 overall including 7.0 in writing and 6.0 in each other component	2:2	
6.5 overall, 6.5 in writing and speaking, 6.0 in each other component	2:2	
6.5 overall, 7.0 in writing, 6.0 in each other component	2:2	
6.5 overall, 6.0 in writing, 5.5 in each other component	2:2	✓**
6.5 overall, 6.0 in writing, 5.5 in each other component	2:2	✓
7.0 overall, 6.0 in each component	2:2	
7.0 overall, 6.0 in each component	2:2	
7.0 overall, 6.0 in each component	2:2	
7.0 overall, 6.0 in each component	2:2	

\*\*You can choose to study this course with a Professional Training placement or study abroad.

For more information visit:  
[surrey.ac.uk/postgraduate](https://surrey.ac.uk/postgraduate)

Subject area

Study options

## Economics

Economics MA	Full-time or part-time
Economics MRes	Full-time
Economics MSc	Full-time or part-time
Economics and Finance MSc	Full-time or part-time

## Engineering

5G and Future Generation Communication Systems MSc	Full-time or part-time
Advanced Geotechnical Engineering MSc	Full-time, part-time or distance learning
Artificial Intelligence MSc	Full-time or part-time
Batteries, Fuel Cells and Energy Storage Systems MSc	Full-time or part-time
Biomedical Engineering MSc	Full-time or part-time
Bridge Engineering MSc	Full-time, part-time, or distance learning
Civil Engineering MSc	Full-time, part-time, or distance learning
Communications Networks and Software MSc	Full-time or part-time

English language requirements (IELTS equivalent)

Minimum UK  
honours degree

Placement option

6.5 overall, 6.0 in each component	2:2	
6.5 overall, 6.0 in each component	First	
6.5 overall, 6.0 in each component	2:1	
6.5 overall, 6.0 in each component	2:1	

6.5 overall, 6.0 in writing, 5.5 in each other component	2:2	
6.5 overall, 6.0 in writing, 5.5 in each other component	2:1	
6.5 overall, 6.0 in writing, 5.5 in each other component	2:2	
6.5 overall, 6.0 in writing, 5.5 in each other component	2:1	
6.5 overall, 6.0 in writing, 5.5 in each other component	2:2	
6.5 overall, 6.0 in writing, 5.5 in each other component	2:1	
6.5 overall, 6.0 in writing, 5.5 in each other component	2:1	
6.5 overall, 6.0 in writing, 5.5 in each other component	2:2	

For more information visit:  
[surrey.ac.uk/postgraduate](https://surrey.ac.uk/postgraduate)

Subject area

Study options

## Engineering

Computer Vision, Robotics and Machine Learning MSc	Full-time or part-time
Electronic Engineering MSc	Full-time or part-time
Electronic Engineering (by short course) MSc	Full-time or part-time
Information and Process Systems Engineering MSc	Full-time or part-time
Infrastructure Engineering and Management MSc	Full-time, part-time, or distance learning
Medical Imaging MSc	Full-time or part-time
Mobile and Satellite Communications MSc	Full-time or part-time
Nanotechnology and Renewable Energy MSc	Full-time or part-time
Petroleum Refining Systems Engineering MSc	Full-time or part-time
Process Systems Engineering MSc	Full-time or part-time
Renewable Energy Systems Engineering MSc	Full-time or part-time
RF and Microwave Engineering MSc	Full-time or part-time

English language requirements (IELTS equivalent)

Minimum UK  
honours degree

Placement option

6.5 overall, 6.0 in writing, 5.5 in each other component	2:2	
6.5 overall, 6.0 in writing, 5.5 in each other component	2:2	✓
6.5 overall, 6.0 in writing, 5.5 in each other component	2:2	
6.5 overall, 6.0 in writing, 5.5 in each other component	2:2	
6.5 overall, 6.0 in writing, 5.5 in each other component	2:1	
6.5 overall, 6.0 in writing, 5.5 in each other component	2:2	
6.5 overall, 6.0 in writing, 5.5 in each other component	2:2	
6.5 overall, 6.0 in writing, 5.5 in each other component	2:2	
6.5 overall, 6.0 in writing, 5.5 in each other component	2:1	
6.5 overall, 6.0 in writing, 5.5 in each other component	2:2	
6.5 overall, 6.0 in writing, 5.5 in each other component	2:1	
6.5 overall, 6.0 in writing, 5.5 in each other component	2:2	

For more information visit:  
[surrey.ac.uk/postgraduate](https://surrey.ac.uk/postgraduate)

Subject area

Study options

## Engineering

Satellite Communications Engineering MSc

Full-time or part-time

Space Engineering MSc

Full-time or part-time

Structural Engineering MSc

Full-time, part-time or distance learning

Water and Environmental Engineering MSc

Full-time, part-time or distance learning

## Environment and sustainability

Corporate Environmental Management MSc

Full-time or part-time

Environmental Strategy MSc

Full-time or part-time

Sustainable Development MSc

Full-time or part-time

## Health sciences

Advanced Clinical Practice MSc

Part-time

Advanced Practice (Primary and Community Care) PGCert

Part-time

Advanced Practice (Public Health Practice) PGCert

Part-time

Education for Health Professionals MA

Part-time



English language requirements (IELTS equivalent)	Minimum UK honours degree	Placement option
--	------------------------------	------------------

6.5 overall, 6.0 in writing, 5.5 in each other component	2:2	
6.5 overall, 6.0 in writing, 5.5 in each other component	2:2	
6.5 overall, 6.0 in writing, 5.5 in each other component	2:1	
6.5 overall, 6.0 in writing, 5.5 in each other component	2:1	

6.5 overall, 6.0 in writing, 5.5 in each other component	2:2	
6.5 overall, 6.0 in writing, 5.5 in each other component	2:2	
6.5 overall, 6.0 in writing, 5.5 in each other component	2:2	

7.0 overall, 6.5 in each component	2:2	
7.0 overall, 6.5 in each component	2:2	
7.0 overall, 6.5 in each component	2:2	
7.0 overall, 7.0 in each component (or equivalent)	2:2	

For more information visit:  
[surrey.ac.uk/postgraduate](https://surrey.ac.uk/postgraduate)

Subject area

Study options

Health sciences	
Education for Health Professionals PGCert	Part-time
Education for Health Professionals PGDip	Part-time
Healthcare Practice MSc	Full-time or part-time
Leadership in Healthcare MSc	Part-time
Nursing Studies (Registered Nurse - Adult Nursing) PGDip	Full-time
Nursing Studies (Registered Nurse - Mental Health) PGDip	Full-time
Physician Associate Studies PGDip	Full-time
Primary and Community Care (Community Children's Nursing) (SPQ) MSc	Full-time or part-time
Primary and Community Care (District Nursing) (SPQ) MSc	Full-time
Primary and Community Care (General Practice Nursing) (SPQ) MSc	Full-time or part-time
Public Health Practice MSc	Full-time or part-time
Public Health Practice (SCPHN) (Health Visiting) MSc	Full-time or part-time
Public Health Practice (SCPHN) (School Nursing) MSc	Full-time or part-time

English language requirements (IELTS equivalent)

Minimum UK  
honours degree

Placement option

	Minimum UK honours degree	Placement option
7.0 overall, 7.0 in each component (or equivalent)	2:2	
7.0 overall, 7.0 in each component (or equivalent)	2:2	
7.0 overall, 7.0 in each component (or equivalent)	2:2	
7.0 overall, 6.5 in each component	2:2	
7.0 overall, 7.0 in each component	2:2	
7.0 overall, 7.0 in each component	2:2	
7.5 overall, 7.0 in each component	2:2	
7.0 overall, 6.5 in each component	2:2	
7.0 overall, 6.5 in each component	2:2	
7.0 overall, 6.5 in each component	2:2	
7.0 overall, 7.0 in each component	2:2	
7.0 overall, 7.0 in each component	2:2	
7.0 overall, 7.0 in each component	2:2	

For more information visit:  
[surrey.ac.uk/postgraduate](https://surrey.ac.uk/postgraduate)

Subject area

Study options

### Higher education

Higher Education MA

Part-time

### Hospitality, tourism and event management

Air Transport Management MSc

Full-time or part-time

International Events Management MSc

Full-time

International Hotel Management MSc

Full-time

International Tourism Management MSc

Full-time

Strategic Hotel Management MSc

Full-time

Strategic Marketing MSc

Full-time or part-time

Strategic Tourism Management  
and Marketing MSc

Full-time

### Literature and creative writing

Creative Writing MA

Full-time or part-time

English Literature MA

Full-time or part-time

\*You can choose to study this course with a Professional Training placement or study abroad option. Please note that the English language requirement may be different for this option, see the course page on our website for further details.

English language requirements (IELTS equivalent)

Minimum UK  
honours degree

Placement option

6.5 overall, 6.0 in writing, 5.5 in each other component

2:2

6.5 overall, 6.0 in each component

2:2

6.5 overall, 6.0 in each component

2:2

6.5 overall, 6.0 in each component

2:2

6.5 overall, 6.0 in each component

2:2

6.5 overall, 6.0 in each component

2:2

6.5 overall, 6.0 in each component

2:2



7.0 overall, 6.5 in each component

2:2

7.0 overall, 7.0 in writing,  
6.0 in each other component (or equivalent)

2:1

6.5 overall, 7.0 in writing,  
6.0 in each other component

2:1

For more information visit:  
[surrey.ac.uk/postgraduate](https://surrey.ac.uk/postgraduate)

Subject area

Study options

### Mathematics

Mathematics MSc

Full-time

### Performing arts, music and sound

Acting MA

Full-time

Acting MFA

Full-time

Musical Theatre MA

Full-time

Musical Theatre MFA

Full-time

Stage and Production Management MA

Full-time

Theatre MA

Distance learning

Music MMus

Full-time or part-time

### Physics

Medical Physics MSc

Full-time or part-time

Nuclear Science and Applications MSc

Full-time or part-time

Physics MSc

Full-time or part-time



English language requirements (IELTS equivalent)

Minimum UK  
honours degree

Placement option

6.5 overall, 6.0 in writing, 5.5 in each other component

2:1

6.5 overall, 6.0 in each component

2:2

6.5 overall, 6.0 in each component

2:2

6.5 overall, 6.0 in each component

2:2

6.5 overall, 6.0 in each component

2:2

6.5 overall, 6.0 in each component

2:2

6.5 overall, 6.0 in each component

2:2

6.5 overall, 6.0 in each component

2:1

6.5 overall, 6.0 in writing, 5.5 in each other component

2:2

6.5 overall, 6.0 in writing, 5.5 in each other component

2:2

6.5 overall, 6.0 in writing, 5.5 in each other component

2:2

For more information visit:  
[surrey.ac.uk/postgraduate](https://surrey.ac.uk/postgraduate)

Subject area

Study options

### Physics

Radiation and Environmental Protection MSc

Full-time or part-time

### Politics

International Relations MSc

Full-time

International Relations (International Intervention) MSc

Full-time

Public Affairs MSc

Full-time

### Psychology

Advanced Practice in Psychological Wellbeing PGCert

Full-time

Developmental Psychology in Research and Practice MSc

Full-time or part-time

Environmental Psychology MSc

Full-time

Health Psychology MSc

Full-time or part-time

Psychological Intervention (CBT) PGDip

Full-time

\*\*\*You can choose to study this course with a short Professional Training placement

English language requirements (IELTS equivalent)

Minimum UK  
honours degree

Placement option

6.5 overall, 6.0 in writing, 5.5 in each other component

2:2

6.5 overall, 6.0 in each component

2:2



6.5 overall, 6.0 in each component

2:2

6.5 overall, 6.0 in each component

2:2

6.5 overall, 6.0 in each component

2:1

7.0 overall, 6.5 in each component

2:1

7.0 overall, 6.5 in each component

2:2

7.0 overall, 6.5 in each component

2:2

7.0 overall, 7.0 in each component

2:2

For more information visit:  
[surrey.ac.uk/postgraduate](https://surrey.ac.uk/postgraduate)

Subject area

Study options

## Psychology

Psychology (Conversion) MSc

Full-time

Research Methods in Psychology MSc

Full-time or part-time

Social Psychology MSc

Full-time or part-time

# SHORT COURSES

We also offer a range of short postgraduate courses for continuing professional development. For more information, visit our website: [surrey.ac.uk/cpd](https://surrey.ac.uk/cpd)

The entry requirements shown in this guide are the minimum degree classification you may need to join a particular course. Please refer to our website for full admissions information. You may also need specific qualifications, subjects, accreditation or relevant work experience to join some of our programmes. In most cases, we can accept equivalent international degrees and qualifications.

We've made all reasonable efforts to ensure that the information in this publication was correct at the time of going to print in September 2020, but we can't accept any liability for any inaccuracies in the information published, and the information might change from time to time without notice. Please visit our website at [surrey.ac.uk/postgraduate](https://surrey.ac.uk/postgraduate) for the most up-to-date information before you apply.

## English language requirements (IELTS equivalent)

Minimum UK  
honours degree

Placement option

7.0 overall, 7.0 in each component

2:1

7.0 overall, 6.5 in each component

2:2

7.0 overall, 6.5 in each component

2:2



# FUNDING YOUR STUDY

## Our postgraduate fees

We understand that studying a postgraduate degree is a big financial commitment and that it's important to have the appropriate funding in place. Our focus is on providing the best support that we can so you can get the most from a community and environment that could genuinely transform your life.

You will need to pay fees for each academic year or for each stage of your course.

For the most up-to-date information about fees, please visit: [surrey.ac.uk/postgraduate/pgt-fees](https://surrey.ac.uk/postgraduate/pgt-fees)

## Additional costs

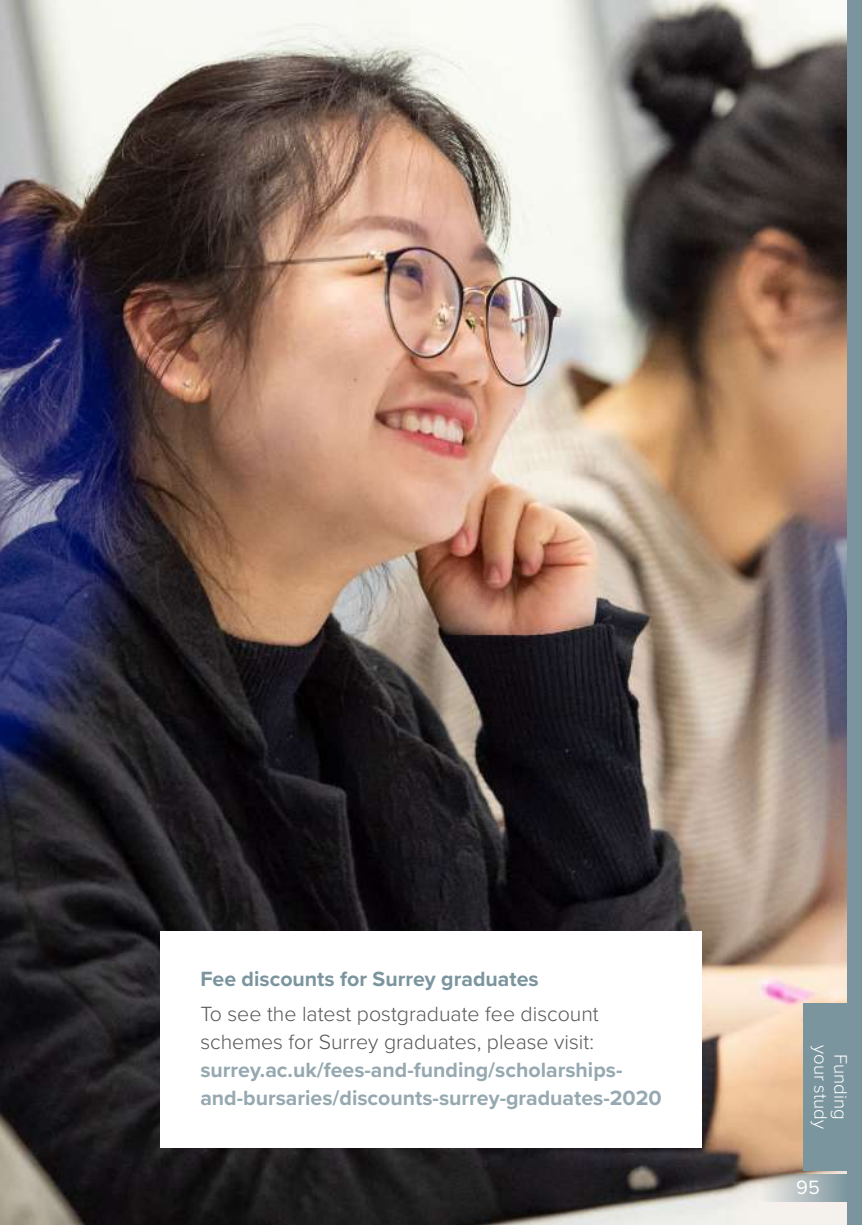
As well as your study fees, some of our masters programmes may require you to pay for special equipment, field courses or study periods in other countries. You can find out more about this from the appropriate department related to your selected course.

## Continuing fees

You might need to pay continuing fees after your course if you make use of the University's general facilities, although this doesn't apply to specialist facilities like laboratories.

Generally, our postgraduate students don't need to pay continuing fees, but extension fees may apply for certain courses. If your course requires these, the department for your course will inform you about the appropriate arrangements. (Please note that postgraduate research students are required to pay a completing status fee but this does not apply to postgraduate taught students.)

For more information, please contact: [feesandfunding@surrey.ac.uk](mailto:feesandfunding@surrey.ac.uk)



### **Fee discounts for Surrey graduates**

To see the latest postgraduate fee discount schemes for Surrey graduates, please visit: [surrey.ac.uk/fees-and-funding/scholarships-and-bursaries/discounts-surrey-graduates-2020](https://surrey.ac.uk/fees-and-funding/scholarships-and-bursaries/discounts-surrey-graduates-2020)





### Erasmus+ funding\*

During your course you might be able to take an Erasmus+ traineeship in another part of Europe. This can be in preparation for your dissertation or on graduation, as a recent graduate.

Currently, Erasmus+ funding (€470-520 per month for the 2020-21 academic year, depending on the destination country) is available for all students who source their own traineeship with a minimum duration of two months in another European country. This also includes an additional €20 per month for students from disadvantaged backgrounds (household income below £25,000) on top of this grant amount. For more information, visit:

[surrey.ac.uk/student-exchanges/study-abroad/work-abroad](https://surrey.ac.uk/student-exchanges/study-abroad/work-abroad)

### UK Government postgraduate loans

If you're a UK student resident in the UK, you might be able to fund your postgraduate fees with a loan from the Student Loans Company. You could borrow up to £11,222 (based on 2020 entry), with repayments calculated based on your income after graduation. For eligibility information and further details, please see:

[surrey.ac.uk/pg-studentloan](https://surrey.ac.uk/pg-studentloan)

### Sponsorship

If you're a UK student, UK research councils can provide you with a useful source of financial support should you wish to study a postgraduate research degree. Sometimes other funding methods can be provided for certain taught programmes.

For more information, visit: [ukri.org](https://ukri.org)

\*Please note: the future status of the Erasmus+ scheme beyond May 2022 is dependent on the outcome of the Brexit negotiations.



### **Sponsorship from your employer**

Are you looking to study a part-time degree with us? Your current employer may be able to assist with your course fees and/or offer you flexible working hours.

### **National awards for students outside the UK**

A number of countries have national scholarships schemes that you could use to support your studies. For more information about the available schemes, visit the British Council website: [britishcouncil.org](http://britishcouncil.org)

### **Bursaries and scholarships**

For up-to-date information about scholarships and bursaries at Surrey, please visit: [surrey.ac.uk/fees-and-funding/scholarships-and-bursaries](http://surrey.ac.uk/fees-and-funding/scholarships-and-bursaries)

### **On-campus financial advice and support**

Our Student Money Advisers can answer any questions related to your finances. We want you to help you make informed choices when it comes to money so that you can concentrate on working towards your ambition during your time with us.

For more information on money matters, including childcare and interest-free emergency loans, visit: [surrey.ac.uk/ask](http://surrey.ac.uk/ask)

For more information about our fees and funding opportunities, please visit: [surrey.ac.uk/fees-and-funding](http://surrey.ac.uk/fees-and-funding)



# ENGLISH LANGUAGE REQUIREMENTS

Our courses are taught in English, so you'll need a certain level of ability in English to join us.

## English language tests

You'll need a good standard of English to be able to fully benefit from a postgraduate course at Surrey. If English isn't your first language, you may need to take an English language test to apply.

Depending on your nationality, where you studied your undergraduate degree or if you have an accepted GCSE-equivalent English Language qualification, you might not need to take an English language test.

To find out more about exemptions, please see:

[surrey.ac.uk/apply/international](https://surrey.ac.uk/apply/international)



We accept a range of English language tests for our postgraduate courses, including:

- IELTS (Academic)\*
- Pearson Test of English\*
- Cambridge Certificate of Advanced English
- Cambridge Certificate of Proficiency in English
- Test of English as a Foreign Language internet-based test (TOEFL iBT)\*
- Trinity College London Integrated Skills in English (ISE)\*

\*You must have taken this test less than two years before you start your course.



## English language courses at Surrey

Our School of Literature and Languages offers a range of pre-sessional English language courses that could help prepare you for your degree course if you don't yet have the English language skills you need. The right one for you will depend on your English language proficiency and the course you want to study.

All our pre-sessional English language courses are taught by experienced, professional tutors using up-to-date methods. Our English courses give you the chance to improve your confidence in the language and your study skills, while also making new friends and getting settled in Surrey – maximising your chances of academic and professional success.

While on a pre-sessional course, you'll have full access to all University facilities and will receive individual support from our staff, including one-to-one tutorials.

The courses last 22, 12, 8 or 5 weeks, and once successfully completed, you can progress directly on to your chosen degree course without taking any further external language tests.

For more information, visit:

**[surrey.ac.uk/pre-sessional-english-courses](https://surrey.ac.uk/pre-sessional-english-courses)**





### **English language and visa applications**

If you want to study one of our pre-sessional English language courses and also need a Tier 4 (General) student visa to study in the UK, you'll need to complete a UK Visas and Immigration Secure English Language Test (SELT) before you can join us. We don't offer these tests ourselves.

SELTs are only required for pre-sessional courses, not academic courses. Find out more about SELTs at:

**[surrey.ac.uk/apply/international](https://surrey.ac.uk/apply/international)**

To find out more about our English language courses, either contact our pre-sessional team at:

**[english@surrey.ac.uk](mailto:english@surrey.ac.uk)**

or visit:

**[surrey.ac.uk/pre-sessional-english-courses](https://surrey.ac.uk/pre-sessional-english-courses)**

### **English language support**

If you need additional English language help while you study at Surrey, we offer a free English Language Support Programme.

To find out more, visit:

**[surrey.ac.uk/english-language-support-programme](https://surrey.ac.uk/english-language-support-programme)**



# HOW TO APPLY

To apply for a postgraduate masters course at Surrey, you'll need to complete and submit our online application form. You can access this through the specific course pages on our website: [surrey.ac.uk/postgraduate](https://surrey.ac.uk/postgraduate)

We recommend that you submit your application as early as possible to avoid disappointment. Where a course does have an application deadline, the date is detailed on its webpage. Shortly after you apply, you'll receive an email with information on how to access Surrey Self-Service where you can track the status and outcome of your application.

## **Admissions policy and selection**

At Surrey we offer an inspiring, welcoming and supportive learning environment to help you succeed. Our policy is to consider all applications primarily on merit and their academic potential. We welcome applications from students who, in addition to formal qualifications, can demonstrate:

- Intellectual ability (in order to benefit from the rigorous demands of a Surrey degree)
- Suitability for the programme of study
- Motivation to study
- Passion for the chosen subject.

We take all aspects of your application into account when considering whether to make you an offer.



You'll usually be expected to have achieved, or be predicted to achieve, our minimum entry requirements or above – although we're unable to guarantee that meeting the grades stated in our entry requirements will be enough to enable us to make you an offer.

Admission to the University is subject to your acceptance and observance of the University's rules and regulations. You can find our full Admissions Policy at: [surrey.ac.uk/pgadmissionspolicy](https://surrey.ac.uk/pgadmissionspolicy)



# INTERNATIONAL APPLICANTS

## Visa applications

If you require a student visa, you need to apply through Tier 4 of the Points-based Immigration System.

You can find more information at:  
[surrey.ac.uk/visas-and-immigration](https://surrey.ac.uk/visas-and-immigration)  
[gov.uk/visas-immigration](https://gov.uk/visas-immigration)

If you're from a country that is not part of the EU/EEA, you may need to apply for additional permission to study some science and engineering subjects at postgraduate level. This is called the Academic Technology Approval Scheme (ATAS).

If you require a Confirmation of Acceptance for Studies (CAS), which you will need in order to apply for your Tier 4 (General) student visa, you must get your ATAS certification before we can issue the CAS. All students requiring ATAS will need to have obtained the certificate in order to receive their CAS. For a complete list of subjects that need ATAS certification, please visit:  
[gov.uk/academic-technology-approval-scheme](https://gov.uk/academic-technology-approval-scheme)



## Disabled and neurodiverse students

Disability and neurodiversity includes long-term medical conditions, sensory impairments, mobility difficulties, mental health conditions, autism and specific learning differences such as dyslexia.

It's our policy to consider all applications primarily on merit and their academic potential. However, it's essential for us to know the nature of any conditions in advance so that we can advise on what facilities and support arrangements are available to you.

If you have a disability, specific learning difference or medical condition which may affect your ability to study your chosen course, please let us know on your application form.

For further information about the support available, please visit: [surrey.ac.uk/disability-neurodiversity](https://surrey.ac.uk/disability-neurodiversity)



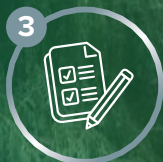
# NEXT STEPS



**1**  
Visit our website to learn more about Surrey



**2**  
Choose your courses



**3**  
Sign up for a postgraduate event



**4**  
Write a pros and cons list for each course



**5**  
Decide how you would want to fund your course



**6**  
Apply directly through the University of Surrey



**7**  
Wait to receive a response



**8**  
Received an offer? Congratulations!



**9**  
Accept your place at Surrey



**10**  
Your new journey is about to start





# SAY HELLO

## **Postgraduate open days**

Find out more about what Surrey can offer you at one of our open days. Discuss your options with our friendly academics, take part in subject presentations and chat with our current students. [surrey.ac.uk/postgraduate-open-events](https://surrey.ac.uk/postgraduate-open-events)

## **Postgraduate webinars**

Speak with staff and current students at one of our online webinars. Find out more at: [surrey.ac.uk/postgraduate-webinars](https://surrey.ac.uk/postgraduate-webinars)

## **Meet our international team**

Our team are here to help international students throughout the application process – from advising you on choosing the right course, to applying for a visa and preparing for your first few weeks at Surrey. Meet them at an international event or webinar: [surrey.ac.uk/international](https://surrey.ac.uk/international)



 /universityofsurrey

 @uniofsurrey

 @uniofsurrey

 /universityofsurrey

[surrey.ac.uk/postgraduate](https://surrey.ac.uk/postgraduate)

For information on how we're managing  
Covid-19 safety, teaching and student support,  
visit: [surrey.ac.uk/coronavirus](https://surrey.ac.uk/coronavirus)

#### Disclaimer

We've made all reasonable efforts to ensure that the information in this publication was correct at the time of going to print in September 2020 but we can't accept any liability for any inaccuracies in the information published, and the information might change from time to time without notice. For the latest and most up-to-date information, please visit our website at: [surrey.ac.uk](https://surrey.ac.uk)