



The
University
Of
Sheffield.

The Sheffield International Guide 2021.



Map of the UK



What's in this guide?



Why Sheffield

4–19

Why choose the University of Sheffield?	4
Sheffield and surrounding area	6–11
World-class education	12
Cutting-edge research	14
Links with industry and business	16
Scholarships	18

Life at Sheffield

20–33

Global community	20
Our campus and facilities	22–25
Accommodation	26
Students' Union	28
Volunteering and other opportunities	30
Academic and careers support	32



Courses and how to apply

34–46

Undergraduate course listings	34
Postgraduate taught courses	35
Postgraduate research opportunities	36
How to apply	38–41
English language pre-sessional courses	42
Foundation year and pre-masters courses	44
Tuition fees	46

Come and meet us

47

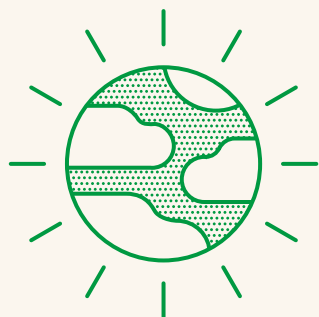
Campus map

48



Why choose the University of Sheffield?

The University of Sheffield is recognised globally for excellence in research and teaching. We welcome the best students from all over the world to join our vibrant, supportive community.



**A world
top 100
university**

(QS World University Rankings 2021)

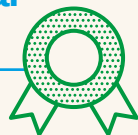
**A member of the
UK's prestigious
Russell Group**



**RUSSELL
GROUP**

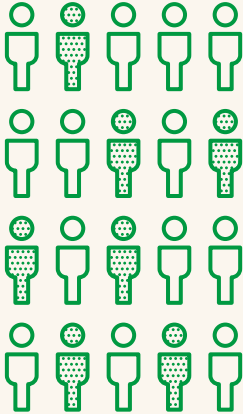
**£4.7 million
in international
scholarships**

(Amount awarded in 2019)





Over 29,000
students from
150 countries



Number one
in the north
of England
for graduate employability

(The Times and Sunday Times Good
University Guide 2020)



99%

of research
submitted to REF
is internationally
recognised, excellent
or world leading

(Latest Research Excellence
Framework 2014)



22nd
in Europe for
teaching excellence

(Times Higher Education Europe
Teaching Rankings 2019)

Sheffield and surrounding area



Sheffield is a vibrant and modern city in the heart of the UK.

Home to more than half a million people, it has all the facilities you'd expect of a major UK city – restaurants and bars, cinemas, theatres and live music venues, museums and galleries, and independent and brand-name shops.



It's a well-connected city with easily accessible and affordable transport links, making it the ideal base for exploring the UK and Europe. Sheffield is a friendly, welcoming and safe city, and as one of the top 10 most affordable UK university cities, your money will go further here.

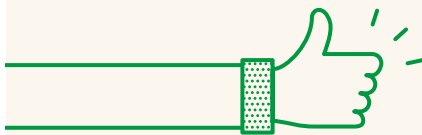
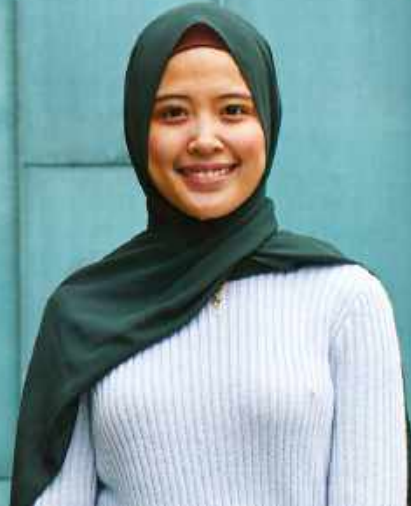




“Sheffield is a great location to get to know other UK cities. I usually travel by train and use the aged 16-25 discount railcard which saves 1/3 of the price.”

Nur Bint^e Zainal Abidin
BA (Hons) Journalism Studies

Singapore



Top ten

most affordable
UK university cities

(RBS Student Living Index 2019)

Explore the UK by train



Edinburgh

3 hours 26 minutes

Leeds

38 minutes

Liverpool

1 hour 46 minutes

London

2 hours

Manchester

50 minutes

Things to do in Sheffield

Sheffield offers a world of fun, culture and entertainment with plenty to see and do. Here are just a few of them:

Treat yourself to a meal at one of the many city centre restaurants and pop-up street food markets.

Visit Meadowhall, a large shopping mall with nearly 300 shops, located just a short tram ride from the city centre.

Listen to bands at one of the city's live music venues or make memories at Tramlines, Sheffield's own annual music festival.

Watch the latest blockbuster or an independent movie at one of Sheffield's cinemas.

Take in some culture with an exhibition at the Millenium Galleries or watch a play at the Crucible Theatre.





**“I really enjoy living here,
the environment is so student
friendly and there are so
many social events happening
every week.”**

Eleni Koursari
MSc Antimicrobial Resistance

Cyprus



The green city

Famous for being one of the UK's greenest cities, there are more than 250 parks and areas of woodland in Sheffield. The city's historical Botanical Gardens and beautiful Weston Park are each just a few minutes' walk from the University campus.





A 30-minute bus or train journey will take you to the Peak District National Park, a stunning landscape that's home to picturesque villages, market towns and traditional English manor houses, as well as trails and routes for hiking, mountain biking and climbing.



"The city of Sheffield has the beauty of the countryside and the convenience of a big city. It's really friendly and safe."

Shixuan Liu

MA Intercultural Communication

China

World-class education

Studying in the UK is an investment in your future and will help increase your earning potential and future opportunities.

As a world top 100 university, a degree from Sheffield will be recognised and valued by employers all over the world.

The University of Sheffield is a member of the UK's prestigious Russell Group, a consortium of research-intensive universities. Our academics are passionate about tackling the great global contemporary challenges and our research influences international policy and changes lives. It also informs our world-class teaching across a wide range of disciplines, including arts and humanities, business, engineering, law, medicine, dentistry and health, science and social sciences.



“The academics who teach on my course are so inspiring, they’re doing research which has an impact on the real world and it’s amazing to learn from those at the forefront of innovations in their field.”

Dimitris Boufidis
BEng (Hons) Bioengineering

Greece



Whatever subject you choose to study, at Sheffield you'll receive high-quality education and support, as well as having an amazing student experience. Our academics use innovative methods to give you the best learning experience, inside and outside the classroom. In addition to becoming a specialist in your chosen subject, you'll develop problem-solving, research, analytical, team working and leadership skills, as well as increasing your confidence.



"The classes here are much more interactive compared to my home country, which I believe is a much better way to learn. I have also been able to meet students from different cultures, which makes classes very interesting, as everyone has a different insight."

Natalia Kreutzer Faucz Rocha
LLM Law

Brazil

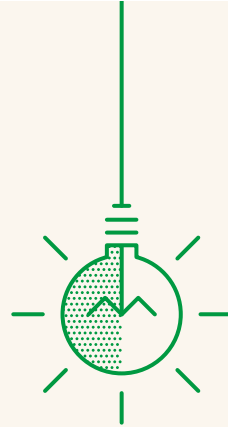


Cutting-edge research

Our research influences national, regional and international policy and changes lives.

Our reputation for excellence attracts some of the best minds in the world. These exceptional people are drawn to the University of Sheffield by the opportunity to work at the frontiers of knowledge, on research which makes a difference.

Through our flagship research institutes, we are tackling some of the most important social, economic and health challenges facing the world today. Bringing our expertise together from different disciplines into our flagship institutes allows us to create innovative solutions which improve lives.



**We are in
the top ten**

**UK universities for
the strength and
impact of our research**

(Latest Research Excellence
Framework 2014)



To find out more:

www.sheffield.ac.uk/research/flagship-institutes



Our flagship research institutes

Energy



Finding low-carbon solutions to the world's biggest energy challenges.

Neuroscience



Improving the lives of patients and families affected by devastating neurological diseases.

Healthy Lifespan



Tackling the global epidemic of multimorbidity – the presence of two or more chronic conditions.

Sustainable Food



Finding dynamic solutions to sustain and improve the world's future food supplies.

Links with industry and business

We work closely with world leaders in industry including Unilever, AstraZeneca, Siemens, Boeing, McLaren, PwC and Rolls-Royce, as well as UK and international government agencies and charitable foundations.

Together we share expertise, facilities and insight which lead to globally recognised research. Our strong links with these organisations ensure that what we are teaching meets the future needs of your chosen industry or sector.



A global model for industry collaboration

The University's Advanced Manufacturing Research Centre (AMRC) is a world-class centre for advanced machining and materials research. Our team of 500 researchers work with more than 100 industry partners – from BAE Systems to McLaren – to overcome manufacturing challenges. The AMRC has become an internationally renowned model for collaboration between academic research and industry.



Our Triple Crown accredited Management School

Our Triple Crown accreditation places us within the global elite of business schools. Fewer than 100 business schools worldwide are accredited by AACSB, AMBA and EQUIS – the three largest and most influential business school accreditation bodies.

Professional accreditations

Many of our courses are accredited by leading professional bodies and associations including the:

- Royal Institute of British Architects
- National Council for the Training of Journalists
- Chartered Institute of Management Accountants
- Institution of Engineering and Technology

Accreditations can give you a distinct advantage on your first or next steps in your career.

They can be an important assurance for employers to show that your degree is current, relevant and highly regarded by professionals in your subject area.

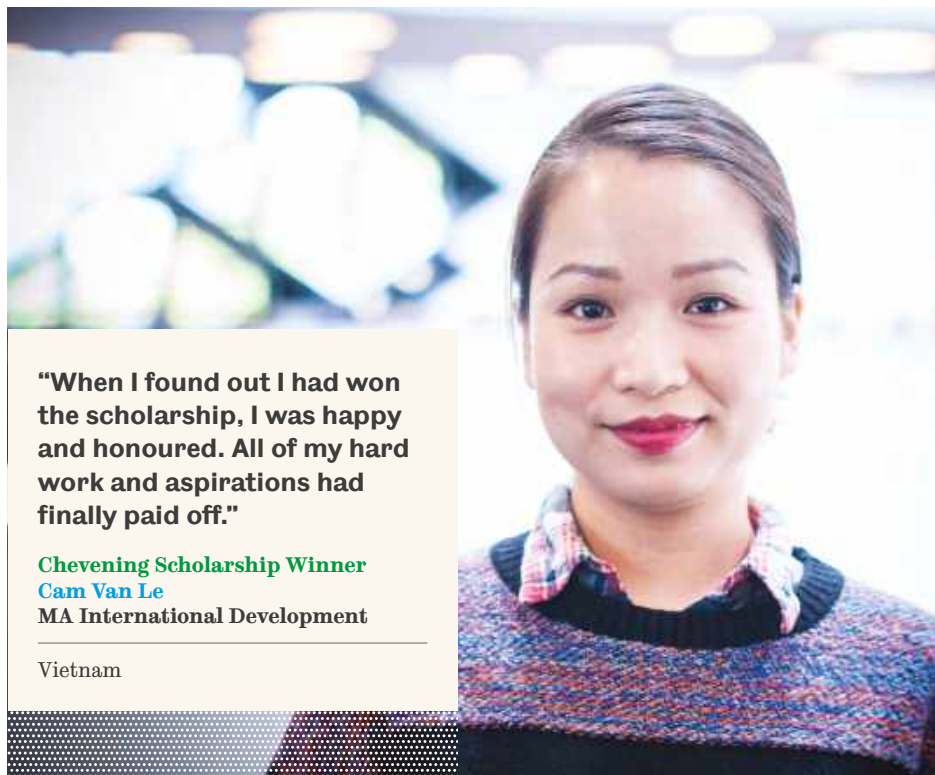


Scholarships

We believe in rewarding international applicants who show exceptional academic achievement and potential.

Scholarships are available for undergraduate, postgraduate taught and postgraduate research courses. You must hold an offer for one of our courses to apply for one of our scholarships.

We'll contact you about how to apply once you've received an offer. Some scholarship eligibility is based on your nationality or domicile, while others are for specific levels of study in particular subjects or courses. Terms and conditions apply to all of our scholarships.



“When I found out I had won the scholarship, I was happy and honoured. All of my hard work and aspirations had finally paid off.”

Chevening Scholarship Winner
Cam Van Le

MA International Development

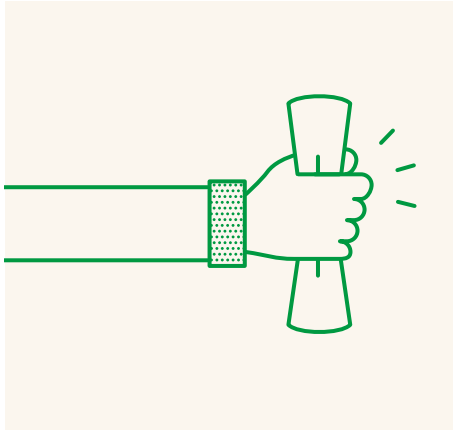
Vietnam



“When I received an email from the University saying that I had won a scholarship, it changed my life forever.”

**Undergraduate Merit
Scholarship Winner**
Ihsan Muhaddisoglu
MEng Aerospace Engineering
with a Year in Industry

Turkey



In 2019, we awarded more than
**£4.7 million in
international
scholarships**

Global community

By studying in Sheffield, you'll join an international community of students and staff.

You'll have regular opportunities to meet students from all over the world so you can learn about different cultures and share your culture with others. These activities include a conversation club and our weekly Global Cafe.

Dedicated international student support

We have a team of specialist advisors who can answer any questions about applying for a visa. If you're flying to Manchester Airport, we can meet you and take you by coach to Sheffield. This service is available in September for a small fee. We run an extensive Orientation Week programme with information sessions, events and activities to help you settle in before the academic year begins.



More than 29,000 students from 150 countries

choose to study at Sheffield every year and we have a wealth of experience and knowledge when it comes to supporting international students



An international community

Sheffield is a multicultural city. You'll find cafes and restaurants with cuisine from all over the world including halal, vegan, Chinese, Indian, Thai, Japanese, Lebanese and Turkish food.

If you prefer to cook for yourself, there are a range of international markets and supermarkets. There are places of worship for those of all faiths including Muslim prayer rooms on campus.



"Sheffield is a very culturally diverse city with such a great and welcoming community. This is the first time I've ever studied overseas but I was able to acclimatise really easily."

Chinonyerem Olumba
MSc Information Systems
Management

Nigeria

Our campus and facilities

We're continually investing in our campus and facilities to ensure we provide a high-quality learning environment with access to all of the resources and technology you need. The University's history dates back to 1905 and our campus features both historic buildings and contemporary architecture.

- 1.** Firth Court, our iconic red brick building
- 2.** The Diamond, home to state-of-the-art laboratories and creative media suites
- 3.** The Arts Tower, the tallest academic building in the UK
- 4.** Study anytime in the Information Commons, open 24 hours a day, 7 days a week
- 5.** Old meets new in the Engineering Heartspace

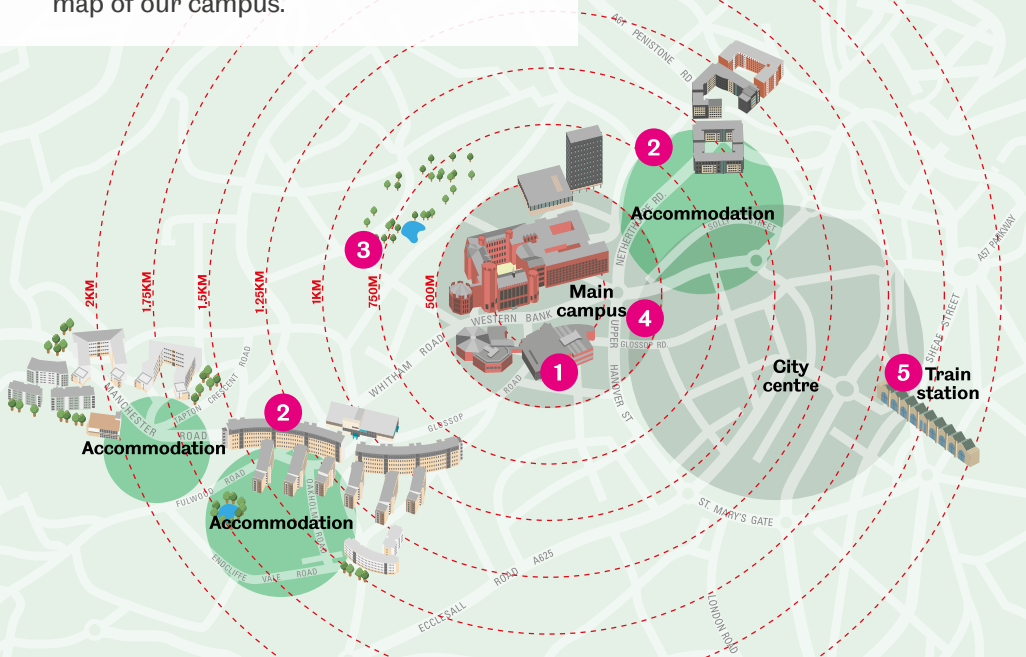




Getting around

The University campus is located within walking distance of our student accommodation and city centre. Most students choose to walk, but there is plenty of public transport available.

Turn to page 48 to see a more detailed map of our campus.





1. Students' Union



2. Accommodation



3. Sports facilities



4. Main campus



5. Train station



Accommodation

We guarantee* you a place in our accommodation for the duration of your studies, providing you meet a few simple terms and conditions.



Living in university accommodation is a great way to make friends and you'll benefit from our Residence Life programme of free and discounted events and activities.



We offer a range of undergraduate and postgraduate living options within walking distance of the University campus and can also provide advice if you are coming to the UK with your family.



If you would prefer to live in private housing then we can support you to find a registered property which has met our safety and management standards.

* For more information, visit: www.sheffield.ac.uk/accommodation/guarantee



A home away from home

zZ



Your own
bedroom with a bed,
desk and chair



Free wi-fi



Majority of our
rooms are en-suite



Security 24 hours
a day, 7 days a week



£110 to £160 per week,
for a 42–51-week contract
(costs for 2020)



Access to
a shared kitchen



For more information and to take a 360° tour:
www.sheffield.ac.uk/accommodation
startliving@sheffield.ac.uk

Students' Union

When you join the University, you also become a member of the Students' Union. Sheffield Students' Union is run by and for students, to make sure you have the best possible university experience.



Advice and support

Student Advice Centre – Our expert advisors are here to help you navigate student life. They can support you with anything you need help with, including money management, visa advice or handling exam stress.

Student Jobshop – We can help you look for jobs and work experience including part-time paid work, summer internships and voluntary work.

Activities and events

350 student societies – Whether you love ballroom dancing or ice skating, or are passionate about badminton or karaoke, you'll find a student society with others that share your passion.

Music, film, concerts and trips – We have our own cinema for film showings and a live music venue with regular club nights. We also organise visits to different cities and places of interest across the UK.



Food and drink

Grab a bite to eat – You'll find lots of places to eat and drink, with a range of international food available as well as vegan, vegetarian, gluten-free and halal food.

Pick up the essentials – Our Zero Waste Shop offers environmentally friendly household products and packaging-free dried food, while our SU Shop stocks a range of international food as well as stationery items and gifts.



Sheffield Students' Union has been voted the number one Students' Union in the UK

(Whatuni Student Choice Awards 2017–20)



Find out more about our Students' Union:
su.sheffield.ac.uk

Volunteering and other opportunities

Standing out from the crowd

Whatever your career ambitions, we offer opportunities for you to develop your personal and professional skills and experience alongside your degree.

We offer degrees which include the option of gaining a year's work experience and you can also spend time at one of our international partner universities. We can also help you find shorter placements, summer internships and part-time work.



"I completed a 12-month placement as a project assistant at Samsung SDS Europe in London. It has helped me to build up so many useful connections in the industry."

Kyubin Do
BSc (Hons) Information Technology
Management for Business

South Korea



Our volunteering programme

Our student volunteers have worked on a range of projects, from assisting mental health charities to supporting children and local communities.

"I volunteer for a charity which makes science child and family friendly through events, talks and workshops. I love the opportunity to give something back to the local community and gain new experience."

Nikita Verma
MBChB (Hons) Medicine

India



We have partnerships
with more than

400

prestigious universities
across the world. You may
be able to spend part of your
degree or a summer studying
at one of them.



Academic and careers support



Developing your study skills

Our Academic Skills Centre – known as 301 – provides study skills workshops and one-to-one tutorials on topics including academic writing, assessment and personal effectiveness. The centre facilitates peer learning, so you can learn and share from other students, and there's also a database of online learning resources.

Specialist academic writing support

You can also book up to six one-to-one appointments per year with the Writing Advisory Service at our English Language Teaching Centre. This is an opportunity to discuss written project work with a specialist writing tutor. We'll provide feedback and consultation on your writing and give you a chance to raise queries about grammar, paragraph structure, vocabulary or referencing.

Free English language classes

We offer weekly classes and specialist workshops for full-time students who want further support with their English language, particularly to practise their academic language and communication skills. Many departments also offer language support which is specific to your subject area.



Supporting your career ambitions

You can access our Careers Service throughout your degree and for up to three years after you graduate.

Our Careers Service runs large fairs on campus for employers who are actively looking to recruit our students.

You can also meet employers when they deliver on-campus events or workshops. Our careers advisors run support sessions on topics such as how to write a CV and improving your interview technique.



“The Careers Service worked with me to review my CV. Thanks to the help they provided, I was contacted by several companies about job opportunities before I’d even finished my course.”

Williams Duah

MSc (Eng) Process Safety and Loss Prevention

Now working as a process safety engineer

Ghana

Undergraduate course listings

You can find more detailed information about our undergraduate courses on our webpages at www.sheffield.ac.uk/undergraduate

ACCOUNTING AND FINANCE

AEROSPACE ENGINEERING

ARCHAEOLOGY

ARCHITECTURE

AUTOMATIC CONTROL AND SYSTEMS ENGINEERING

BIOCHEMISTRY

BIOENGINEERING

BIOLOGY

BIOMEDICAL SCIENCE

BIOSCIENCE

BUSINESS MANAGEMENT

CHEMICAL ENGINEERING

CHEMISTRY

CIVIL AND STRUCTURAL ENGINEERING

COMPUTER SCIENCE

DENTISTRY

EAST ASIAN STUDIES

ECOLOGY AND CONSERVATION BIOLOGY

ECONOMICS

EDUCATION

ELECTRONIC AND ELECTRICAL ENGINEERING

ENGINEERING

ENGLISH

ENVIRONMENTAL SCIENCE

GENETICS

GEOGRAPHY

HISTORY

JOURNALISM STUDIES

LANDSCAPE ARCHITECTURE

LANGUAGES

LAW

MATERIALS SCIENCE AND ENGINEERING

MATHEMATICS AND STATISTICS

MECHANICAL ENGINEERING

MEDICINE

MICROBIOLOGY

MOLECULAR BIOLOGY

MUSIC

NURSING

ORTHOPTICS

PHILOSOPHY

PHYSICS

PLANT SCIENCES

POLITICS

POLITICS, PHILOSOPHY AND ECONOMICS

PSYCHOLOGY

SOCIAL SCIENCES

SOCIOLOGY

SPEECH AND LANGUAGE

URBAN STUDIES AND PLANNING

ZOOLOGY



Postgraduate taught course listings

You can find more detailed information about our postgraduate taught courses on our webpages at www.sheffield.ac.uk/postgraduate

AEROSPACE ENGINEERING

ANIMAL AND PLANT SCIENCES

ARCHAEOLOGY

ARCHITECTURE

AUTOMATIC CONTROL AND SYSTEMS
ENGINEERING

BIBLICAL STUDIES

BIOENGINEERING

BIOMEDICAL SCIENCE

BUSINESS AND MANAGEMENT

CHEMICAL AND BIOLOGICAL ENGINEERING

CHEMISTRY

CIVIL AND STRUCTURAL ENGINEERING

COMPUTER SCIENCE

DENTISTRY

EAST ASIAN STUDIES

ECONOMICS

EDUCATION

ELECTRONIC AND ELECTRICAL ENGINEERING

ENGLISH

GEOGRAPHY

HEALTH AND RELATED RESEARCH

HISTORY

HUMAN COMMUNICATION SCIENCES

INFORMATION MANAGEMENT

JOURNALISM

LANDSCAPE ARCHITECTURE

LANGUAGES AND CULTURE

LAW

MATERIALS SCIENCE AND ENGINEERING

MATHEMATICS AND STATISTICS

MECHANICAL ENGINEERING

MEDICINE AND HEALTH

MOLECULAR BIOLOGY AND BIOTECHNOLOGY

MUSIC

PHILOSOPHY

PHYSICS AND ASTRONOMY

POLITICS

PSYCHOLOGY

SOCIAL RESEARCH

SOCIOLOGICAL STUDIES

URBAN STUDIES AND PLANNING

Postgraduate research opportunities

We offer a wide range of research programmes in a variety of subject areas. A number of departments offer a PhD with an integrated masters.

There are three ways to apply for a PhD:

1. Develop your own idea and contact a potential supervisor.
2. Apply to work with a University supervisor on one of their existing projects.
3. Apply to a Centre for Doctoral Training.

We may be able to offer research opportunities in the following subject areas:

ANIMAL AND PLANT SCIENCES

ARCHAEOLOGY

ARCHITECTURE

AUTOMATIC CONTROL AND SYSTEMS ENGINEERING

BIBLICAL STUDIES

BIOMEDICAL SCIENCE

CHEMICAL AND BIOLOGICAL ENGINEERING

CHEMISTRY

CIVIL AND STRUCTURAL ENGINEERING

COMPUTER SCIENCE

DENTISTRY

EAST ASIAN STUDIES

ECONOMICS

EDUCATION

ELECTRONIC AND ELECTRICAL ENGINEERING

ENGLISH

FRENCH

GEOGRAPHY

GERMANIC STUDIES

HEALTH AND RELATED RESEARCH

HISPANIC STUDIES

HISTORY

HUMAN COMMUNICATION SCIENCES

INFECTION, IMMUNITY AND CARDIOVASCULAR DISEASE

INFORMATION MANAGEMENT

JOURNALISM STUDIES

LANDSCAPE

LANGUAGES AND CULTURES

LAW

MANAGEMENT

MATERIALS SCIENCE AND ENGINEERING

MATHEMATICS AND STATISTICS

MECHANICAL ENGINEERING

MOLECULAR BIOLOGY AND BIOTECHNOLOGY

MUSIC

NEUROSCIENCE

NURSING AND MIDWIFERY

ONCOLOGY AND METABOLISM

PHILOSOPHY

PHYSICS AND ASTRONOMY

POLITICS

PSYCHOLOGY

RUSSIAN AND SLAVONIC STUDIES

SOCIOLOGICAL STUDIES

URBAN STUDIES AND PLANNING



For a list of existing PhD projects and supervisors, as well as more information about funding and our PhD community, visit:

www.sheffield.ac.uk/postgraduate/phd



Courses and how to apply



How to apply

It's easy to apply
to courses at the
University of Sheffield.



If your application is successful, you'll receive either a conditional or an unconditional offer.

Conditional offer

This means that we're offering you a place providing you meet certain conditions, which are usually based on:

- Your examination results
- Evidence of your English language level
- Other documentation such as your reference letters

Unconditional offer

This means that you've met our academic and English language entry requirements and we are happy to accept you onto your chosen course.



Undergraduate

1



Decide what course you want to study

Use our online prospectus and check the most up-to-date academic and English language requirements.

2



Submit your application

Submit your application through UCAS at **www.ucas.com** and upload your documents and personal statement.

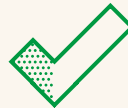
3



Review your application

We'll review your application and let you know our decision via UCAS.

4



Successful application

If your application is successful, we'll be in touch about what you need to do next to apply for your accommodation and visa.

Deadlines: We recommend, where possible, applying to UCAS by 15 January 2021 to begin your studies in September 2021. The deadline for applications is 30 June 2021. We recommend that you apply as soon as possible as some courses are very popular and fill up quickly. There is an earlier deadline of 15 October 2020 for all applications for medicine and dentistry.

Postgraduate taught

1



Decide what course you want to study

Use our online prospectus and check the most up-to-date academic and English language requirements.

2



Submit your application

Submit your application through our online application system at www.sheffield.ac.uk/postgradapplication and upload your documents.

3



Review of your application

We'll review your application and contact you by email to let you know our decision.

4



Successful application

If your application is successful, we'll be in touch about what you need to do next to pay your deposit and apply for your accommodation and visa.



Documents you will need to upload are:

- Official certificates of any qualifications or transcripts
- A supporting statement explaining why you want to take the course
- Two references including one from an academic contact
- Evidence of your English language ability



Deadlines: We recommend applying as early as possible as many of our courses are extremely popular. You do not need to wait for your examination results or references before you apply. A number of our courses have application deadlines – see our webpages for more information.

English language pre-sessional courses

We offer support to all students who want to improve their English language skills.

Our English Language Teaching Centre (ELTC) is accredited by the British Council and is a test centre for both IELTS and the Cambridge English Language Assessment exams.



Pre-sessional English

We run courses throughout the year to help you gain the academic English skills and language proficiency you need to study a degree at the University of Sheffield. The length of study required will depend on your current level of English and the English language requirement of your degree.

Successfully attending and completing the assessments on a pre-sessional English course at the ELTC will allow you to progress directly onto your academic course at the University without having to take another English language exam.



For the latest information and more detailed entry requirements, visit:
www.sheffield.ac.uk/eltc/presessional



IELTS overall score improvement you need	Typical pre-sessional course length
2.0	40 weeks
1.5	34 weeks
1.0	10–22 weeks, depending on your individual component strengths
0.5	6–22 weeks, depending on your individual component strengths

English language support

We offer free English language support alongside your degree so you have a little extra help to develop a wide range of academic, language and communication skills. If your partner has accompanied you to the UK, we can offer them free part-time English classes too.



Foundation year and pre-masters courses

Pathways to studying at the University of Sheffield

We recognise that studying overseas can bring some challenges and you may need a little extra support.

We provide a pathway to help you to join the University of Sheffield if you don't yet meet the entry requirements for an undergraduate or postgraduate taught course.



Why study with us?

At the University of Sheffield International College, we provide a learning environment which is designed to support the needs of our international students. Our staff are dedicated to supporting and preparing you to excel when you go onto study at the University.

During your course, we'll help you to:

- Reach the academic level you need in your chosen subject
- Learn the study skills and independent learning techniques which you'll need for your degree programme
- Develop your English language skills and confidence so you can take part in lectures and tutorials and get the most out of your studies



Over 2,000 international
students including 55 different
nationalities come to the
College each year

Our programmes

International Foundation Year

This is a one-and-a-half or two-semester programme designed specifically to provide you with a path to undergraduate degree study at the University.

Pre-Masters

This is a one-and-a-half or two-semester programme designed specifically to provide you with a path to postgraduate study at the University.

Programme structure

For both the International Foundation Year and Pre-Masters, you can choose the relevant subject route for your chosen degree programme:

- Business, social sciences and humanities
- Dentistry (available as an International Foundation Year only)
- Science and engineering



If you are unsure which subject route is best for your degree programme visit: www.sheffield.ac.uk/international-college

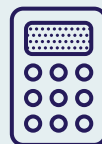
Tuition fees

The best way to find out the tuition fee for your chosen course for 2021/2022 is to use the fee look-up tool at www.sheffield.ac.uk/international/fees-and-funding/tuition-fees

Tuition fees for international students for the majority of our courses starting in 2021 are between £19,450 and £27,150 per year.

Working part time

If you are in the UK on a Tier 4 (General) Student Visa you can work up to 20 hours per week during term time and full time during holidays. We have an online job vacancy service where we advertise part-time work, summer internships and graduate opportunities.



 For more detailed undergraduate course information including tuition fees, visit: www.sheffield.ac.uk/undergraduate

For more detailed postgraduate course information including tuition fees, visit: www.sheffield.ac.uk/postgraduate

Come and meet us

We realise that it's sometimes easier to talk to us face to face. If you're visiting the UK, let us know and we can either arrange a campus tour or let you know when our next open day is.

We know that it isn't always possible to visit us so we travel overseas throughout the year to meet with you. Check www.sheffield.ac.uk/international/visits to find out more about when we're coming to your country next.

We also hold regular online open days where you can chat to students and staff and take virtual tours of buildings on campus.



Our representatives overseas









We have a worldwide network of representatives who can offer you advice and support. They are trained counsellors who know about our entry requirements and application procedures. Many of them offer a visa counselling service to help you with UK entry clearance preparation. You can find a list of all of the overseas representatives that we work with at www.sheffield.ac.uk/international/representatives

Campus map





KEY

-  Public car park
-  Food venue
-  Cafe
-  Cashpoint
-  Toilet
-  Bus stop
-  Supertram stop
-  Footpath



Find out more

www.sheffield.ac.uk/international

Get in touch

internationalenquiries@sheffield.ac.uk

Connect with us

 [internationalsheffield](#)

 [theuniversityofsheffield](#)

 [sheffielduni](#)

 [uniofsheffield](#)

[BACK TO CONTENTS](#)