

CARDIFF  
UNIVERSITY

PRIFYSGOL  
CAERDYDD

Cardiff University  
**Postgraduate**  
Prospectus **2020**



[www.cardiff.ac.uk/postgraduate](http://www.cardiff.ac.uk/postgraduate)







# Contents

Why study a postgraduate course?	2
----------------------------------	---

## About us

Why Cardiff University?	6
Welcome to Wales	8
Cardiff: a capital city	10
A global outlook	14
Accommodation	16
Teaching excellence	18
My Cardiff story: Niki	19
Groundbreaking research	20

## Supporting you

Student support and wellbeing	24
Careers support	26
First-class facilities	28
My Cardiff story: Olivier	30
Sport	31
Doctoral Academy	32
Funding your study	34
Students' Union	36

## Studying with us

Choosing your course	40
Conversion courses	42
Studies to suit your lifestyle	43
My Cardiff story: Anisa	44
Academic schools	45
How to apply	78
Getting here	80

## Course directory

Inside back cover





# Why study a postgraduate course?

Whether you're looking to boost your prospects after graduation, change direction to follow a new career path or make sure you get ahead of the competition in a challenging jobs market, a postgraduate course can help you achieve your goals.

Our programmes allow you to gain the skills, knowledge and expertise you need to really stand out from the crowd.

## Enhance your career prospects

Undertaking a postgraduate course is one of the most effective ways to advance your career to a higher level. The variety of skills and expertise gained from your course can significantly improve your job prospects, maximise your chance of securing work in a specific field and increase your earning potential.

## Achieve professional accreditation

If you need to gain professional accreditation to reach the next stage of your career, a postgraduate course can help you achieve this. We offer a variety of courses leading to professional accreditation, some of which can be studied part-time alongside your employment.

## Change your career path with a conversion course

If your undergraduate degree is not the field you want to work in, a conversion course allows you to upskill in a different area so that you can follow a new career path. We provide a wide range of conversion courses in subjects including business, computer science and law, where no prior knowledge or degree in the subject is required. You'll find all of our conversion courses within the course directory.

## Further explore a subject you are passionate about

If you're coming to the end of your undergraduate studies but you still have the desire to learn or carry out research, a postgraduate course can satisfy your intellectual curiosity by allowing you to explore a subject in more depth.

## Develop expert knowledge in a specialist area

Postgraduate study gives you the chance to really specialise in your field and advance your knowledge of a particular subject area.









# About Us



# Why Cardiff University?

## World-leading research

Cardiff is in the **top tier** of Britain's research universities and is a member of the prestigious Russell Group. We are ranked second nationally for research impact, and in the **top 5** universities for research excellence in the UK.

## 95%

The most recent DLHE\* survey shows that **95%** of our postgraduate research students and **93%** of our postgraduate taught students progressed to employment or further study within six months of graduation.

\*Destination of Leavers from Higher Education (2016/17)

## £500,000

We invest up to **£500,000** in our Master's Excellence Scholarship scheme to support our most talented UK and EU students with their postgraduate studies. Each scholarship is worth a discount of **£3,000** off your tuition fees.

## 300

We have more than **300** postgraduate study options for you to choose from, including full-time, part-time, blended learning and distance learning courses.

## Top 10

Cardiff is recognised as one of the **10 most beautiful universities** in the UK (Times Higher Education 2018).

## Top 4

**Students' Union** in the UK (Times Higher Education Student Experience Survey 2018).



# 7

We've been awarded seven Queen's Anniversary Prizes, which recognise **world-class excellence** in UK Higher Education. We're also home to a large cohort of distinguished staff, including two Nobel Prize winners and 13 Royal Society Fellows.

# 2,500

With more than 2,500 **study spaces** spread across the University – including a number of dedicated areas for postgraduate students – you're never far from somewhere comfortable to get your work done.

## An international community

With over **7,900 international students** from more than **130 countries**, you'll be part of a vibrant community that celebrates its diverse culture.

# £600 million

We're undertaking our biggest campus upgrade for a generation by investing £600m to **improve and develop** our facilities and infrastructure.

# 60

Our Students' Union offers more than 60 **Athletic Union clubs** to get involved in throughout your postgraduate studies, and we're consistently ranked among the UK's top universities for sport in the annual British Universities and Colleges Sport (BUCS) rankings.

# 380

Our **Doctoral Academy** provides a central source for doctoral students to access a comprehensive range of support. This includes hosting **380** workshops, conferences and networking events across the year to help you progress your project and develop your career.







Small country.  
Big heart.  
Great ambition.

## Croeso

That's Welsh for 'welcome', and you'll feel it everywhere you go in Wales.

Welcome to a country of breathtaking natural beauty, where every day a new experience awaits. Around every corner, a hidden gem: colourful fishing villages and cosy inns, mountain vistas and cliff-top trails, sandy bays and bustling cities.

Here you can discover 640 castles; more than any other country in Europe. This is the land of magic and myth, of princes and dragons. A land that has created writers and poets, musicians and athletes, architects and engineers, scientists and philanthropists. A land that has inspired generations to achieve their dreams.

This magical land is our home – and your home too. *Croeso*.



# Cardiff: a capital city

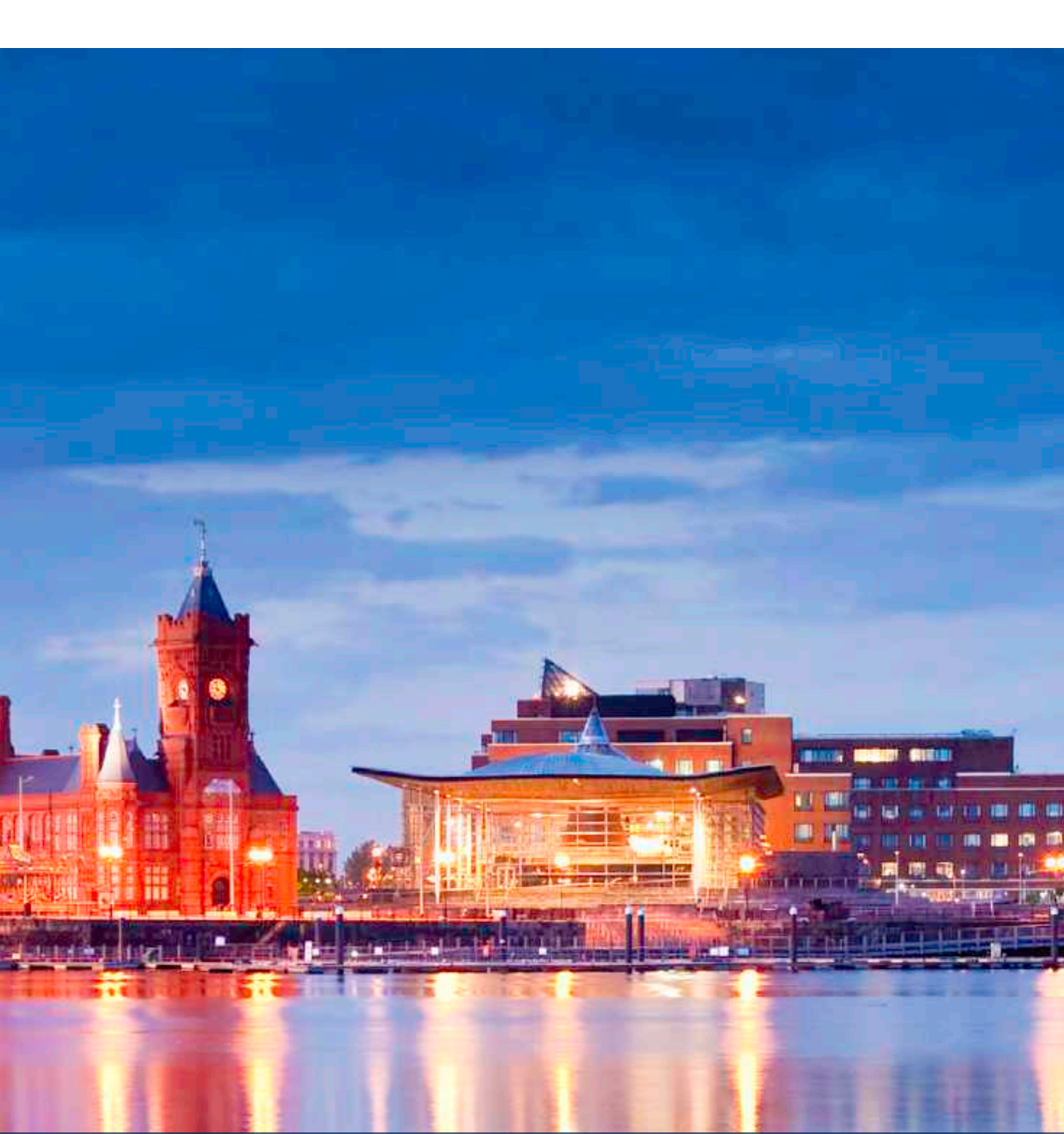
Dynamic. Friendly. Affordable.

Cardiff is a thriving and attractive city which is widely recognised as an outstanding place in which to live, work and study. Cardiff caters to all tastes, offering everything from the excitement of the city to the peace and tranquillity of the nearby coast and countryside.

Contemporary, welcoming and easy to get around, the Welsh capital is a city with character, heritage and ambition. Cardiff combines all the advantages of a compact, friendly and affordable location with the cultural and recreational facilities of a modern capital city.







‘With an exhilarating mix of heavyweight cultural sights, exciting regeneration projects, world-class sport, a prolific music scene and some seriously banging nightlife, it’s easy to see why Cardiff now ranks alongside London and Edinburgh as one of the UK’s most compelling destinations.’ **Rough Guides, 2018**



As one of the UK's **major sporting centres**, Cardiff is home to the iconic 74,500-seat Principality Stadium. The city hosts professional football at the Cardiff City Stadium, rugby at the famous Arms Park and international cricket at Sophia Gardens. Cardiff also boasts an Olympic-sized swimming pool, a white water rafting and canoe centre, ice rink and facilities to play a range of other sports.



As you'd expect from a capital city, Cardiff is one of the UK's **leading retail destinations**. Designer boutiques and high street names can be found within the St David's Shopping Centre, which stands alongside local independent shops, numerous indoor and outdoor markets and a fascinating network of glass-canopied Victorian and Edwardian shopping arcades.



**In the mood for some culture?** Cardiff is well-equipped, with entertainment to suit all tastes. Cardiff Bay's world-class Wales Millennium Centre regularly plays host to touring West End musicals, as well as concerts, drama and ballet. The city is also home to the acclaimed Welsh National Opera, two thriving theatres, several multi-screen cinemas, comedy clubs and a well-established arts centre.



Cardiff is a compact city, **best explored on foot or by bicycle**. The city's new Next Bikes scheme has cycle racks located all over the city – and the first half hour of every journey is free to all Cardiff University students! Excellent transport links also make it easy to travel across the city, south Wales and beyond, with London less than two hours away by rail.





Following an investment of £2.4bn, Cardiff Bay is regarded as one of the most **successful regeneration** projects in the UK. The Bay boasts a modern development of homes, shops, bars, restaurants, offices, and entertainment and sport facilities.



Boasting some **330 parks and gardens**, Cardiff benefits from an abundance of green spaces. Our parks reach right into the heart of the city centre, making the capital a green haven for exploring, relaxing and taking some time out.



Cardiff is a **truly cosmopolitan city** and its multicultural vibe is reflected in its diverse range of cafes, restaurants and bars. No matter your preference, you're sure to find plenty to suit your taste and budget.



**Want to escape the hustle and bustle of city life?** The easily-accessible Brecon Beacons National Park offers outstanding scenery and wildlife, alongside ample opportunity for all kinds of outdoor pursuits including hiking and rock climbing. If it's sea air you crave, take a wander along our stunning coastline by following the 870-mile Wales Coastal Path: the only path in the world that follows a country's coastline in its entirety.

“Cardiff is a great place to be a student. Although it's the capital of Wales, it isn't a large city, which means most things are within walking distance. The centre is very compact and filled to the brim with bars, restaurants, cafes and shops. I also love Cardiff because of its surrounding areas: within half an hour I could either be looking out to sea in Penarth or climbing a mountain in the valleys.” **David, MSc Data Science and Analytics**

# A global outlook

Cardiff is a friendly, diverse and global university. We welcome over 7,900 students from more than 130 countries each year, who come to Cardiff to fulfil their potential through our postgraduate taught and research programmes. We understand that choosing to study abroad can be a big decision. That's why we're here to help you every step of the way.







As an international student, you can benefit from a range of specialist support services designed to make your move to Cardiff as straightforward as possible:

### **Application guidance**

Our international team offers a dedicated advice service to help guide you through the process of applying to study at Cardiff. You can contact our international team at any point before, during and after the application process, and we'll answer any questions you may have.

### **A warm welcome**

We offer an airport collection service from both Cardiff and Heathrow airports before the academic year starts. Once you arrive in Cardiff, we will provide you with a comprehensive induction programme and arrange activities to help you settle in to your new home.

### **Guaranteed accommodation**

Cardiff is one of only a small number of universities that guarantees high quality, conveniently located accommodation for single international students (conditions apply). See page 16-17 to find out more about our wide range of student accommodation.

### **Expert advice**

Alongside the support provided by your academic school, our international student advisers are on hand to assist you with issues such as visas, immigration and finance.

### **International student societies**

Our award-winning Students' Union houses a number of societies specifically for international students. The societies host regular activities for our international students to come together and socialise, as well as annual events such as the Festival of Culture and Diversity.

### **English language programmes**

Our English language teaching centre offers a variety of courses which cater for most language levels and abilities. Our students come from all over the world to improve their English language skills before starting university. Classes are taught on campus by our experienced, fully qualified English language tutors. There is also an IELTS Test Centre at Cardiff University offering regular test dates throughout the year.

- Summer Pre-sessional Programmes: 8, 10, 12 or 20-week intensive courses are available for international students holding conditional offers.
- English for University Study Programme: an academic year programme with entry in September, January and April.
- In-sessional Student Support: we provide assistance with academic writing, exam techniques, listening and speaking, pronunciation, notetaking and seminar skills.

[cardiff.ac.uk/international](https://cardiff.ac.uk/international)

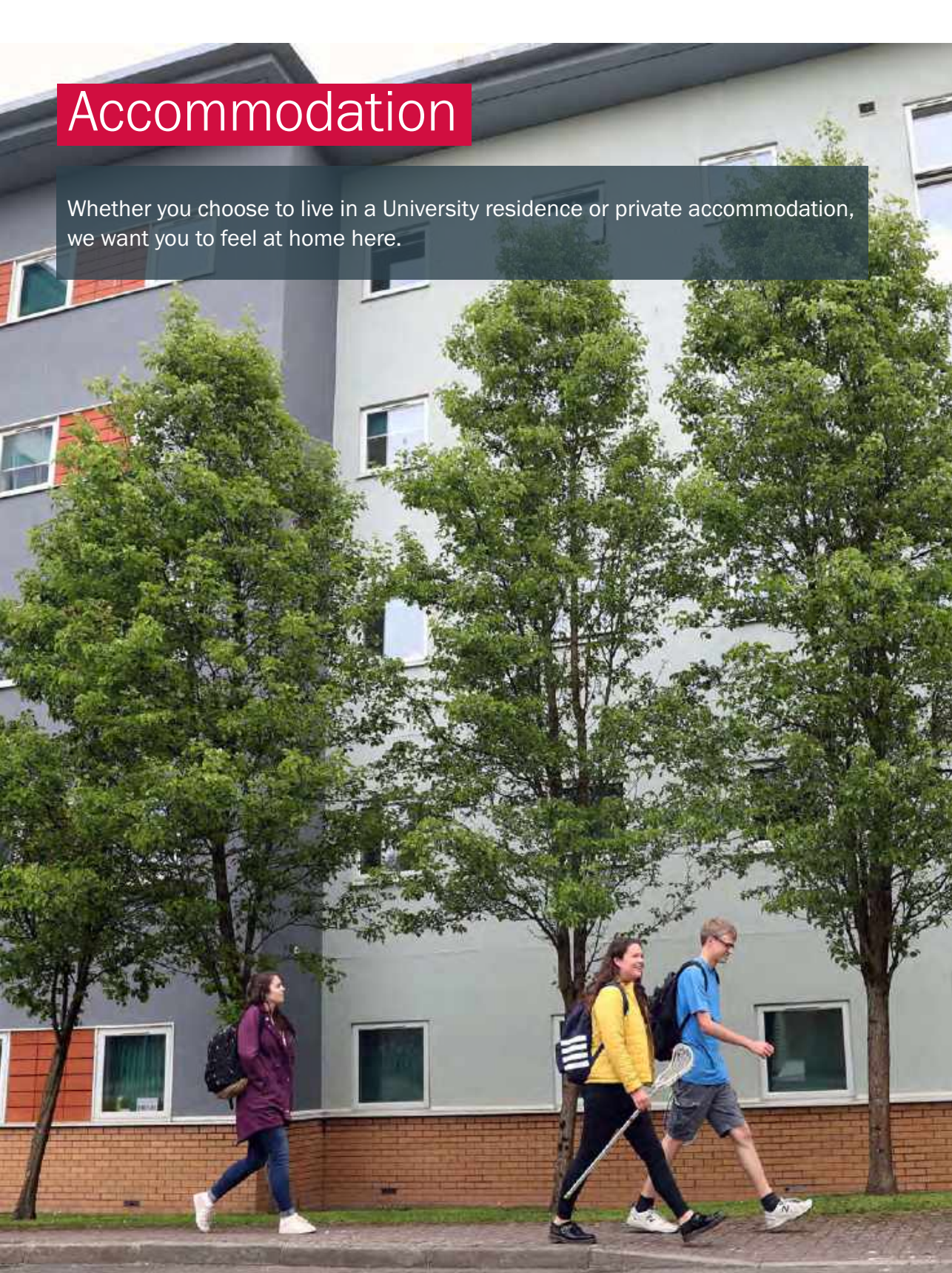
e: [international@cardiff.ac.uk](mailto:international@cardiff.ac.uk) t: +44 (0)29 2087 4432

 [cardiffinternationalstudents](https://www.facebook.com/cardiffinternationalstudents)

 [youtube.com/cardiffinternational](https://www.youtube.com/cardiffinternational)

# Accommodation

Whether you choose to live in a University residence or private accommodation, we want you to feel at home here.







## University residences

Dedicated postgraduate flats are available in University residences, allowing you the opportunity to meet, live and work alongside like-minded people who understand the demands of postgraduate study.

International postgraduate students are guaranteed a single-occupancy place in University residences for the full duration of their studies, and EU students for the first year of their studies. If you're a UK student, University accommodation is not guaranteed but may still be available: see [cardiff.ac.uk/accommodation](http://cardiff.ac.uk/accommodation) for more information.

## Options to suit everyone

We offer a range of high quality student residences to suit individual preferences and budgets, including:

- Single or mixed gender accommodation
- Private or shared bathrooms
- Self-catered, part-catered or fully catered (with vegetarian options)
- A variety of social and sporting facilities
- A limited supply of residences suitable for couples or families (please note that this cannot be guaranteed).

## Affordable

Cardiff is the second most affordable city for students in the UK\*, and this is reflected in our budget-friendly University accommodation. A self-catered residence costs between £111 and £156 per week, whilst a room in part-catered residences typically costs £153 per week (2019/20 prices for single occupancy residences). Residence fees and associated charges are payable by Direct Debit in three instalments across the year.

## Private accommodation

There is a plentiful supply of accommodation available from private landlords in Cardiff. We run a residential househunting event in August, allowing you to meet other postgraduates and look for private rented accommodation as an individual, or as part of a group. Our Students' Union also operates its own professional letting agency, Cardiff Student Letting, which provides student houses suitable for a range of budgets and does not charge agency fees.

\*NatWest Student Living Index 2018



# Teaching excellence

Cardiff University has a long history of providing outstanding research-led teaching:

- We are ranked among the top 40 universities in Europe for teaching excellence (Times Higher Education Europe Teaching Rankings, 2019)
- Ranked 154th in the QS World Rankings 2020, we are Wales' highest ranked university and remain amongst the UK's best
- Our teaching has received robust endorsement from the Quality Assurance Agency for Higher Education (QAA).

Our staff are experts in their fields, working at the forefront of their academic discipline – which means that you will too.

Teaching and learning at Cardiff take place in a stimulating study environment. As a postgraduate student, you will be encouraged to develop a wide range of both subject-specific and transferable skills, enhancing your employability and equipping you with the capabilities you need to excel in your chosen discipline.

## Languages for All

Looking to learn a new language or develop your expertise in an existing one? Our Languages for All programme gives you the chance to improve your language skills alongside your studies – for free.

Whether you're a complete beginner or a linguistic ace, we cater for all abilities. Our flexible choice of study options allows you to learn in a way that suits you, through weekly classes, intensive sessions or independent learning. Courses are currently offered at a variety of levels in:

- Arabic
- French
- German
- Italian
- Japanese
- Mandarin Chinese
- Portuguese
- Russian
- Spanish
- Welsh

## Erasmus+

Erasmus+ is an exchange programme which allows you to receive a grant to study or work

in a European country for 2-12 months as part of your postgraduate degree, subject to agreement from your academic school. The Erasmus+ programme is an exciting opportunity to become immersed in a different culture, make new friends and improve your language skills.

## Continuing Professional Education

We offer a diverse range of part-time courses in a variety of subject areas, which take place in the daytime, evening and at weekends to fit around your lifestyle. Our Continuing Professional Education courses are ideal in helping you enhance your CV, improve your business and project management skills and broaden your learning experience.





**Studying part-time for an MSc whilst working in clinical practice within the NHS gave me the best of both worlds.**

The course ignited my passion for learning once more and helped me take huge steps in my personal and professional development.

I enjoyed studying with a wide range of other therapy and healthcare students from around the world. The MSc provided me with a depth of knowledge which enhanced my clinical reasoning, leadership and patient management within my practice, and I particularly enjoyed the opportunity to undertake a research project in my chosen area of specialty.

Since completing my MSc, I have been employed in a number of leadership roles focusing on stroke service developments at Cardiff and Vale University Health Board. I have been able to use my experiences in my studies and research to inform my current role, developing a new Hyperacute Stroke Unit for Cardiff.

Studying as a postgraduate has ignited my interest in further academic study and research in clinical practice. My ambition now is to take on a therapy clinical leadership role within the new hyperacute stroke service, and even one day to complete a PhD.

**Niki, MSc Physiotherapy**

# Groundbreaking research



From advancing our understanding of dementia to discovering the chemical composition of the Earth's mantle, our researchers are helping to create a stronger, healthier and more sustainable world.

We are a member of the Russell Group – the UK's 'Ivy League' of leading research universities. We were ranked fifth among UK universities when judged on research quality and second on research impact in the most recent Research Excellence Framework (REF 2014).

87% of our submitted research was rated as world-leading (4\*) or internationally excellent (3\*) – the top two categories of assessment. This national assessment exercise, undertaken periodically by the UK funding bodies, confirmed our place as a world-leading centre of research excellence.

Our nine flagship Research Institutes bring together academic talents from across a range of disciplines to tackle some of the biggest challenges facing society, the economy and the environment. The impact of our research continues to reach far beyond the journals in which it is published.

Our expertise puts us in demand with policy-makers, non-governmental organisations and industry alike.

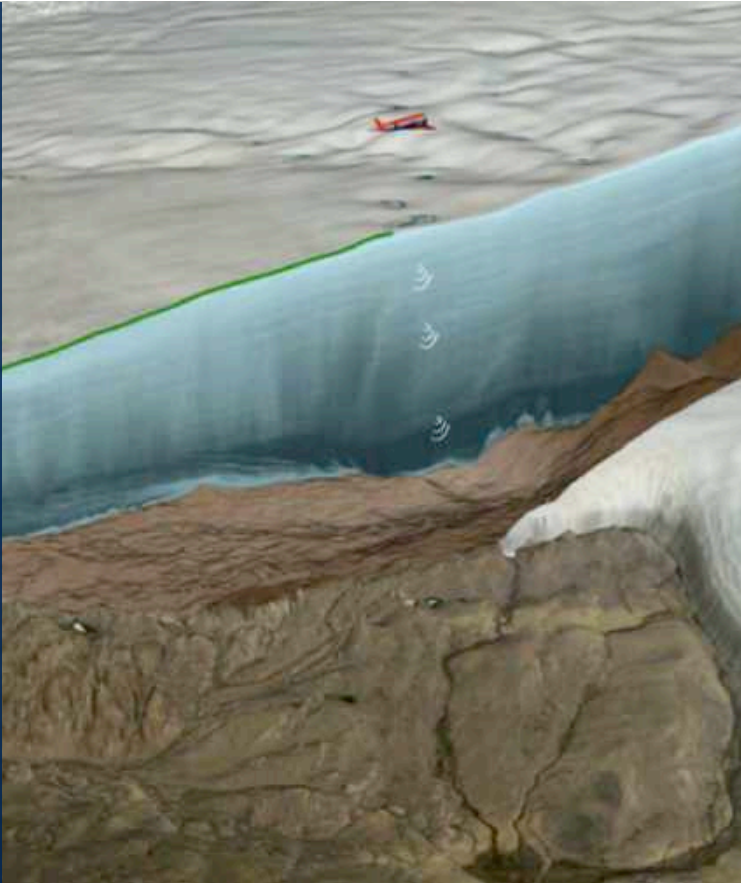
Here's an insight into just a few of the projects that our researchers have been working on this year:

## New hope for world's most endangered mammal

Researchers at the School of Biosciences carried out new genetic analysis of white rhino populations and found that it could be possible to rescue the critically endangered northern white rhino from extinction, using the genes of its less threatened southern cousin.


Analysing genetic samples from 232 rhinos, researchers found that despite the northern and southern populations of white rhinos splitting from each other one million years ago they have occasionally shared genes during cold and arid periods, as recently as 14,000 years ago.





## Giant meteorite crater found beneath Greenland's ice sheet

Researchers at the School of Earth and Ocean Sciences were part of a team that uncovered a giant crater, deep below the ice sheets in Greenland, left over from the catastrophic impact of a meteorite crashing into Earth between 3 million and 12,000 years ago. As a result of detailed chemical analysis performed at Cardiff University, the team were able to paint a picture of the type of object capable of causing such monumental destruction.



## Prehistoric Britons rack up food miles for feasts near Stonehenge

Researchers at the School of History, Archaeology and Religion unearthed evidence of the earliest large-scale celebrations in Britain – with people and animals travelling hundreds of miles for prehistoric feasting rituals. These gatherings could be seen as the first united cultural events of our island, with people from all corners of Britain descending on the areas around Stonehenge to feast on food that had been specially reared and transported from their homes.







# Supporting you

# Student support and wellbeing

Cardiff University offers more than just outstanding taught courses and research opportunities. We want to help you make the most of your experience as a postgraduate student, by ensuring you can access any additional help you may need.







From enrolment to graduation and beyond, we're here to support you every step of the way.

### Money advice

Our Student Funding and Advice team offers free, impartial, non-judgemental and confidential advice. Whether you're a current or prospective student, you can contact us over the phone, by email or face-to-face for expert advice on issues such as funding, access to government benefits, housing matters, academic processes and general welfare issues that may be affecting your ability to study.

Our Scholarships, Bursaries and Money team supports students who may be experiencing unexpected money issues, as well as administering and awarding most of the University's bursaries and scholarships.

### Emotional support

Our Counselling, Health and Wellbeing team offers confidential counselling and emotional support to students who wish to discuss matters of a personal or emotional nature. Help is provided on an individual or group workshop basis, supported by self-help material. The service works to the British Association for Counselling and Psychotherapy ethical framework.

### Disability support

Our Disability and Dyslexia team offers information, advice and specialist support services to current and prospective disabled students on all disability related matters. We can help to identify your support needs, and will liaise with your academic school and other departments to put any reasonable adjustments which are required in place. We also offer a screening and

assessment process for students who think they may have a specific learning difficulty.

### World faiths

Our multi-faith University Chaplaincy offers advice, support and care to students of all faiths and none. Our Chaplains provide a range of services including confidential pastoral listening, quiet spaces for prayer or meditation, opportunities for worship and communal prayer, information about local faith communities and places of worship, as well as social inter-faith events to encourage dialogue between members of different religions.

### Support for international students

Our International Student Support team offers confidential advice and support for students from outside the UK on a wide range of issues including immigration and visas.

### Award-winning childcare

Our award-winning Day Care Centre provides full day care facilities to students with children aged 10 weeks to five years. Located in the heart of the Cathays Park campus, the Centre offers care through the primary medium of English, alongside basic Welsh. Early application is advisable.



# Careers support

Whatever the stage of your career journey, our team of professional careers advisers is here to help you achieve your goals. We offer a wide range of services to support you with your career development during your time at Cardiff University and beyond.





## Preparing you for your future

Our expert careers professionals are all linked to academic schools and can provide you with personal, subject-specific guidance on everything from skills development and job searches to interview preparation and practical help. We will work with you to help you plan your career and prepare you for the recruitment process in your desired industry.

Our online platform provides 24/7 support to help you with self-development, career planning and research, and as a postgraduate student, you will have access to a careers account where you can book appointments and events, and search for graduate employment opportunities with organisations recruiting directly from Cardiff University.

## Commercial start-ups

Got an idea for a new business, social enterprise or freelancing opportunity? Our enterprise team can help you unlock your creativity and achieve your potential. You can access tailored personalised support to help establish or grow your business with 1:1 mentoring, start-up workshops, skills development sessions, funding opportunities and online tools to bring your ideas to life.

## Employer connections

The Cardiff University jobs board gives you direct access to more than 2,000 registered employers.

You will also have the opportunity to attend our frequent careers fairs, employer presentations and specialist panel events.

We have hundreds of employers on campus throughout the year that are actively looking to recruit our talented students.

Our postgraduates have secured employment with a wide range of high profile organisations including Admiral, BAE Systems, BBC, Bloomberg, Cap Gemini, Citibank Group, Deloitte, Eversheds, GE Healthcare, HSBC, IBM, Microsoft, the NHS, the Office for National Statistics, PwC, Sky News, TATA Steel and the UK Government. We also have strong links with a wide variety of third sector and SME organisations, providing you the opportunity to engage with a huge range of employers.

## International students

Our careers advisers are on-hand to provide support, resources and guidance to help you research career pathways and opportunities in the UK and your home country.

Cardiff University ranked within the **top 25** for universities targeted by the largest number of top employers in 2018-19, according to Graduate Market 2019.

We are ranked **15th** in the UK in the Times Higher Education Global University Employability Ranking 2018.

**95%** of our UK, full-time, Postgraduate Research students were in employment and/or further study six months after graduation.  
(DLHE survey 2016/17)

**93%** of our UK, full-time, Postgraduate Taught students were in employment and/or further study six months after graduation.  
(DLHE survey 2016/17)



# First-class facilities

There's never been a more exciting time to be a postgraduate student at Cardiff University. We are currently investing hundreds of millions of pounds to provide our students with world-class facilities as part of our largest campus upgrade in a generation.







A massive £600m capital investment programme across the University, including £260m in student facilities, will help us ensure that we can give you the best student experience possible.

### Investing in your future

From elegant Portland stone buildings to contemporary study centres, you'll be learning in a dynamic and inspiring environment. No matter what you study as a postgraduate, you'll find everything you need to get the most from your course: state-of-the-art recording studios and performance theatres, Europe's most powerful brain scanner, a £2m dentistry simulation suite, Wales' largest stock exchange trading floor and a range of outstanding new research facilities as part of our Innovation Campus.

We are also building a £50m Centre for Student Life to provide a central hub for our student support services as well as offering modern, flexible social learning spaces and a 550-seat lecture theatre.

### IT facilities

Our modern IT facilities enable easy access to a range of guidance, tools and resources to support your study and research. The University-wide wireless network covers University buildings and our student residences.

The University network provides you with access to a wide variety of software applications and collaboration tools, as well as online resources and services including email and networked file storage.

You will also benefit from free subscription to Microsoft Office 365 products for the duration of your studies.

Open Access IT rooms across the campus, some of which are open 24 hours a day, 7 days a week, are freely available for you to use. The IT Service Desk provides IT help and support 24/7.

### Libraries

Our modern libraries are welcoming, comfortable and offer a broad range of information resources in print and online. We provide a flexible study and research environment, with study spaces to suit all learning needs. Extended opening hours – including evenings, weekends and 24/7 access in our two main sites (the Arts and Social Studies Library and Health Library) – enable you to work at times that suit you best.

There are more than 1.3m printed books in the library collection and an extensive range of online resources including eJournals, eBooks, indexes, databases, statistical collections and full text archives. Research students can benefit from a wide array of specialist collections.





## 44 Spending another year at Cardiff was a no brainer for me.

The School of Journalism, Media and Culture is one of the top journalism schools in the country that boasts a number of Master's courses credited as leading in the UK. The teaching, wide-ranging modules offered and resources available made it an easy choice.

Currently, I'm a Strategic Planner at Edelman, the world's leading communications firm. I'm responsible for helping input the overall strategy and creative ideas into campaigns, adverts and work the agency as a whole is involved in. I've worked with brands including Microsoft, Xbox, Skittles, Nutella and Nissan, and been a part of award-winning work for the likes of ASICS and Taco Bell.

My course helped provide me with a strong base of core communication skills, and an understanding of the processes involved with formulating digital, social and integrated strategies in earned media. The huge diversity of people on my course meant its emphasis on group work enabled me to engage with a broader set of opinions, thoughts and suggestions that I would have otherwise not had the opportunity to engage with. I've relied heavily on what I learnt during my year of postgraduate study in my career, which has undoubtedly made me better at my job as a result.

**Olivier,**  
MA, International Public Relations  
and Global Communications  
Management



# Sport



Cardiff is consistently ranked amongst the top UK universities for sport. We offer an extensive range of sports clubs, with opportunities to participate at an elite or recreational level.

There are more than 60 Athletic Union clubs to get involved in throughout your postgraduate studies, ranging from hockey and rugby to martial arts, motorsports and dodgeball.

Many of our clubs compete in the British Universities and Colleges Sport (BUCS) competition, where teams travel all over the UK battling it out for BUCS points against other universities. We also have an extremely popular intra-mural games (IMG) programme with over 100 teams competing weekly in netball, football and rugby.

The Fitness and Conditioning Centre houses our state-of-the-art strength and conditioning provision, while you will also find further cardio, resistance and weights equipment alongside a range of outstanding indoor and outdoor sports facilities at the Sports Training Village. Our friendly and personal approach to health and fitness includes fitness classes, personal training, individual programme design and nutrition advice.

Our High Performance Programme provides elite sportsmen and women with a comprehensive support programme to ensure that they



have the necessary environment to excel in their given sport. Areas of support include lifestyle management and academic support, physical preparation such as physiotherapy, sports massage and strength and conditioning coaching, as well as the potential for financial award.

# Doctoral Academy



The Doctoral Academy is the hub of interdisciplinary postgraduate researcher activities at Cardiff University. It is a central source for researchers to access personal, professional and research skills development workshops, as well as a range of interdisciplinary community events and funding opportunities, all within a dedicated space.

Our aim is to help you, the researcher, to have an outstanding student experience and to benefit from being part of a postgraduate community where you can develop research excellence and future employability. We work in partnership with the University's Careers and Student Support services to ensure that you are fully equipped to succeed.

Undertaking Doctoral Research is intellectually stimulating, challenging and unlike any other form of university study. For that reason, the Doctoral Academy

runs 'Starting Out' induction sessions in October and at each additional enrolment point. These events will introduce you to the nature of a research degree, to the support available for your research and career development and to other research students, who will become your friends, colleagues and perhaps even collaborators.

## Supporting the Researcher Journey

We offer a comprehensive programme which encompasses several elements: formal training

workshops, wellbeing and careers activities, online learning, community events and student-led activity.

Our programme is focused around the iterative stages of your PhD journey.

- Transition (settling in and getting started)
- Acquisition (building skills and networks)
- Completion (staying on track and finishing up)
- Employability (planning for your future)

This enables us to support you on your journey as a new researcher, helping build confidence, skills, persistence and a fulfilling career.





## Interdisciplinary and Funding Opportunities

In addition to courses, we enable researcher development by providing opportunities for involvement in student-led conferences, and offering funding for student-led interdisciplinary activities. Nearly £8,000 has been awarded to this year's researchers to enable them to gain experience and develop skills by running their own events and initiatives.

## Access to GW4 Resources

Cardiff University is part of the GW4 Alliance which enables us to offer you access to specialist, flagship equipment and training across the west including Bath, Bristol and Exeter universities. We are also a part of the GW4 Doctoral Student Training Scheme, helping us to provide you with the opportunity and funds to develop discipline specific training and innovative student support activities.

## Doctoral Training Programmes

As a world-leading, research intensive university, we are involved in a range of dedicated doctoral training programmes which offer excellent fully funded postgraduate research opportunities, spanning many of our areas of research excellence.

## Our Community

Join a **nurturing community** of postgraduate researchers, helping you develop links outside of your specialism and with local industry

Regular **interdisciplinary activities** offering a stimulating research environment and opportunities to network with other researchers

Annual **student-led conferences** and other research showcase events including our Images of Research exhibition and Three Minute Thesis competition

Regular **Writers' Retreats** offering support and encouragement for writing your thesis

**Dedicated space** for PhD students including seminar rooms, an IT suite and 40 allocated desk spaces for researchers in the writing up stage

A vibrant Twitter community offering a **virtual space** to discover and engage with other researchers

The Doctoral Academy Blog, where you can showcase your research and discover the diversity of our **research community**



**The Doctoral Academy offers so many opportunities to acquire new skills and sharpen existing ones.**

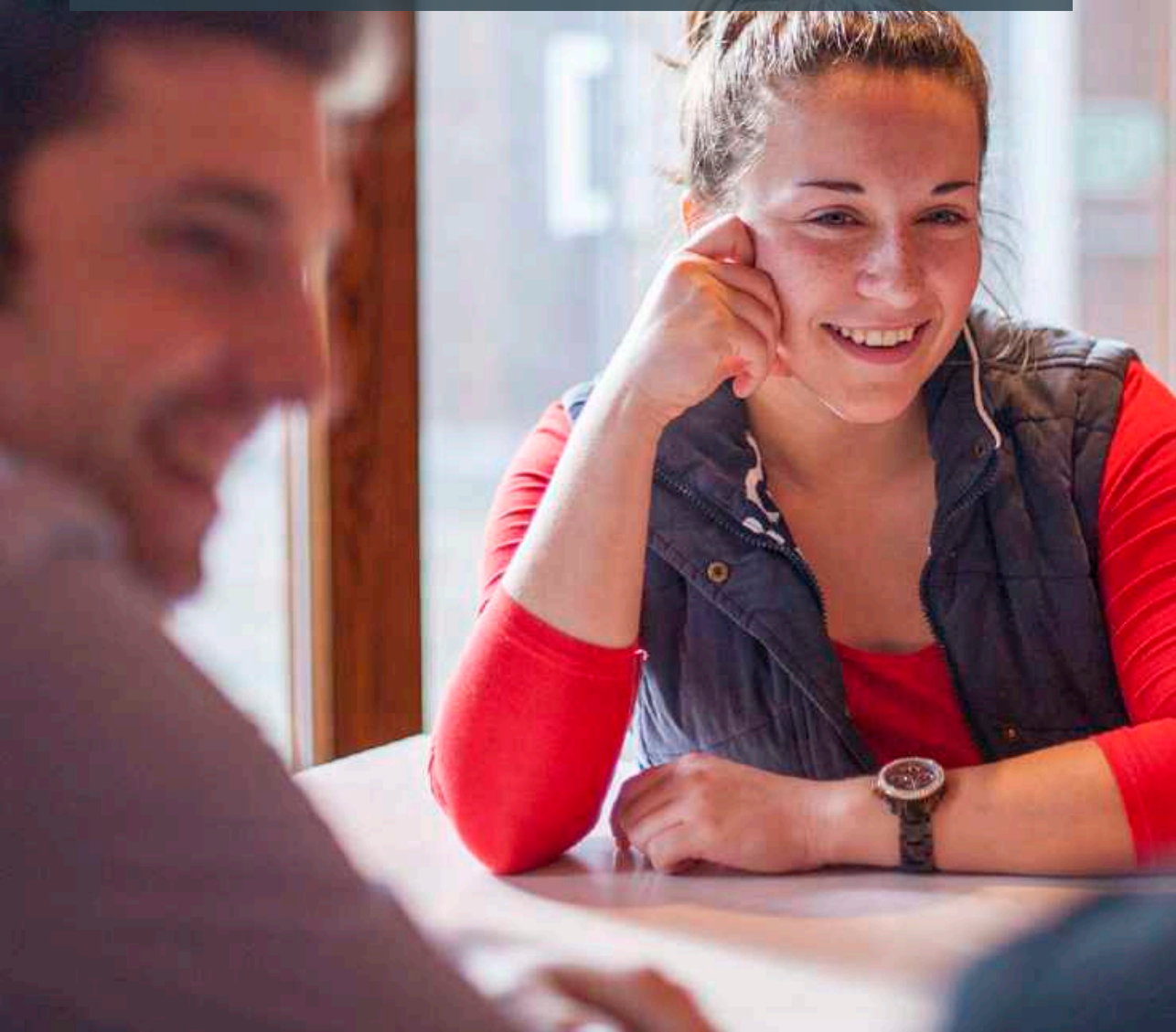
I appreciate that the Doctoral Academy is not just about making us better scholars, but genuinely more well-rounded and happy individuals. The world of academia can be harsh and isolating, but the Doctoral Academy is an oasis where PhD students from different academic backgrounds can come together and realise that we aren't alone in this, not by a long shot. I have made friendships with people I cherish that I would have never encountered had it not been for the common ground of hands-on workshops, inspiring seminars and interdisciplinary conferences.

**Adelle, School of History, Archaeology and Religion**



# Funding your study

We understand that advancing your education to postgraduate level is a significant financial commitment. That's why, if you're considering a postgraduate course, it's a good idea to consider your funding options as soon as possible. If you need help from the experts, our Student Funding and Advice team can provide you with free, impartial advice on all aspects of funding your study.





Most funding sources are highly competitive and are subject to various conditions. You should research your funding options early to ensure that you can meet application deadlines. Even if you can't find full funding for your programme, you may be able to secure partial funding from a number of different sources.

### Master's Excellence Scholarships

Our competitive Master's Excellence Scholarship scheme has been designed to support high calibre UK and EU students in funding your postgraduate study. We are investing up to a total of £500,000 in the scheme for entry in September 2020, with each scholarship worth a minimum of £3,000 tuition fee discount. Conditions apply; please see our website for details.

### International scholarships

We have a range of highly prestigious scholarship programmes to support exceptional international students, including our Vice-Chancellor's International Scholarship scheme. Awards from £2,000 are available to international students across a wide range of subject areas and, in many cases, you will automatically be considered without having to submit a separate application form.

### UK Government postgraduate funding for master's study

Postgraduate loans from the UK government are available to support UK and EU students who fulfil the eligibility criteria. Different loans apply depending on where you are domiciled in the UK – please see our website for details. For entry in 2019, students from Wales and the EU could receive up to £17,000 of funding (comprising both a loan and grants), while students from England could receive a loan of up to £10,906. Government funding amounts for entry in 2020 will be published on our website as soon as they are confirmed.

### UK Government doctoral loans

Doctoral loans from the UK government are also available to support UK and EU students who fulfil the relevant eligibility criteria. For entry in 2019, all UK and EU students could receive a loan of up to £25,700. As with the UK Government funding for Master's study, different loans apply depending on where you are domiciled in the UK.

### Additional funding sources

- The UK's seven Research Councils fund UK and EU research students on a competitive basis through our doctoral training programmes
- Throughout the year, we advertise a range of funded PhD projects on our website
- If you're an international student, make sure you investigate funding opportunities offered within your home country via the British Council and other external funding providers
- Our Unistaff Jobshop can help you secure part-time, casual or regular employment within both the University and external organisations
- Numerous charities, trusts and foundations may offer funding for postgraduate study.

### What does my course cost?

Tuition fees vary depending on the course you choose and whether you're a UK, EU or international student. You can find full details of the tuition fees for individual programmes on the course pages of our website.

"I applied for a Master's Excellence Scholarship and this cut my fees, which really helped relieve financial pressure during my degree."

**Matilda, MSc Computing**

# Students' Union

As soon as you enrol as a student, you automatically become a member of Cardiff University Students' Union, one of the biggest, best and most active in Britain.





As a student-led, independent part of the University, the Students' Union represents students and provides a diverse and inclusive range of activities, services and facilities that enrich student life.

The elected full-time officer team provides dedicated representation for postgraduate students and researchers to support your needs.

### Eat, relax, study

The Students' Union has undergone major redevelopment over the last few years, transforming it into a great place to study, socialise and relax. We have worked hard to strengthen the postgraduate community in Cardiff, including hosting events specifically for postgraduate students. From showcasing the research our talented PhD students undertake through recognising research events, to fun social events like wine tasting and quiz nights, and day trips for postgraduates to locations across the UK, it's a great chance to get to know your fellow postgraduate students.

### Advice and welfare

The Students' Union has its own Student Advice service offering free, professional and confidential advice on a range of

student issues, including academic, housing and financial issues. They are there to support you with any aspect of your life as a master's or research student.

### Societies and activities

With more than 200 societies and 60 sports clubs to choose from, there's plenty to keep you busy. If you don't have time to fully commit to a club or society, the 'Give it a Go' programme offers you the chance to try out a whole host of activities.

### Student media

There are opportunities to get involved in our award-winning media, which include the student newspaper 'Gair Rhydd', a lifestyle magazine called 'Quench', as well as our own radio and TV stations, 'Xpress Radio' and 'Cardiff Union TV'.

### Jobs and skills

The Students' Union offers a range of courses to develop your skills, opportunities to volunteer in the community, and the

chance to gain work experience while you study. If you're looking for temporary work to earn some money while you study, the Students' Union and Cardiff University run Jobshop, a dedicated service for students looking to find temporary work that fits around your studies.

### Shops and services

Within the Students' Union building, you will find a range of shops and services, including a supermarket, bank, bookshop, cafés, print shop, pub and a hairdresser. The Students' Union also has its own letting agency that specialises in letting student accommodation.

### Representation

The Students' Union is the recognised voice of students at Cardiff University, joining students in campaigning about the issues important to them, including issues specific to postgraduates. The Students' Union recruits and trains over 1,000 Academic Reps each year, who serve as a valuable link between the University, the Students' Union and the student body to ensure that the student voice is taken seriously at every level.



## Top 4 Students' Union in the UK

(Times Higher Education Student Experience Survey 2018)





A photograph of three students sitting around a table in a study session. One student is using a laptop, and another is looking at a tablet. The scene is brightly lit, likely from a window in the background. The text 'studying with us' is overlaid in large, white, sans-serif font across the center of the image.

# studying with us

# Choosing your course





Postgraduate taught or postgraduate research? Deciding which postgraduate course is right for you will depend on a number of factors including your areas of interest, current level of study and future career ambitions.

## Taught programmes

(including MA, MSc, MScEcon, MBA, MTh, LLM and MDA)

**Taught master's programmes enable you to develop specialist knowledge and expertise of a specific subject area.**

The structured teaching programme is delivered through a combination of lectures, seminars, tutorials and directed reading, alongside independent and practical work. Teaching is followed by the preparation and submission of an individual dissertation or final project. Some courses may also include industrial or work-related placements. A full master's programme is usually studied across 12 months full-time or 24 months part-time, and is comprised of 180 credits.

## Postgraduate Diploma (PgDip) and Postgraduate Certificate (PgCert)

Postgraduate Diplomas and Certificates are postgraduate-level courses structured in a similar way to Master's courses but don't normally involve a written dissertation. These courses are often accredited and can be used to build credit towards a Master's qualification.

A PgDip is usually studied across 9 months full-time or 18-21 months part-time and is comprised of 120 credits. A PgCert programme is less extensive than a PgDip and is normally studied across 6-9 months full-time or 12 months part-time. A PgCert is comprised of 60 credits.

You can also choose to study a range of individual modules on a standalone basis.

## Research degrees

**Research degrees involve the in-depth study of a specified field over an extensive period.**

The results of this research are written in the form of a thesis or dissertation, demonstrating an original contribution of knowledge or practice to their chosen discipline. Opportunities for supervised research are available in all our academic schools.

We encourage you to explore opportunities in academic schools outside your original degree subject, as you may find that many of them offer research areas that link with your area of interest.

The type of research you are engaged in and your experience of undertaking postgraduate research will differ depending on whether you are studying for a lab-based research degree or one within the arts, humanities and social sciences.

Increasingly, institutions offer research degrees that contain some structured teaching, such as our Master of Research (MRes) programmes, Professional Doctorates and our PhD in Economics. These programmes provide advanced research training and specialist knowledge before you embark on your specific research project.



## Benefits of a Taught Degree

- Study a subject you enjoy in more depth
- Increase your career prospects by developing a stronger academic and/or vocational profile
- Change career path with a conversion degree
- Develop your transferable skills to a higher level

## Benefits of a Research Degree

- Make a valuable contribution to knowledge and society in a subject area you love
- Develop more specialised knowledge and expertise
- Increase your career prospects by developing a stronger research profile
- Develop your intellect
- Develop new skills and problem solving abilities

# Conversion courses



Thinking of heading in a different direction, pursuing a new career or returning to study a different subject? Conversion courses can help you make this a reality.

Undertaking a conversion course is one of the most effective ways to fast-track a career change, or continue studying in a completely different subject area from your undergraduate degree.

There are many benefits to studying a postgraduate conversion course:

## Fast-tracking a career change

If your undergraduate degree is not the field you want to work in, a conversion course allows you to upskill in a different area so that you can follow a new career path.

## Continuing your study at a higher level

A conversion course allows you to acquire additional skills to go alongside those gained on your undergraduate degree.

## Pursuing a vocation that matches your interests and that you find more fulfilling

If you've developed an interest in a new area, a conversion course allows you to explore the subject in more depth.

## Increasing your prospects of securing employment in a specific field

The variety of skills and expertise gained from your conversion course could allow you to significantly improve your job prospects and increase your chance of securing work in a specific field.

## Growing your skillset

To help further your career aspirations, a conversion course enables you to develop skills and knowledge in a new subject.

We offer a diverse range of conversion courses that allow you to study a subject unrelated to your undergraduate degree or career, to support you with a change of direction. Subject areas include:

- **Archaeology and Conservation**
- **Business and Marketing**
- **Computer Science and Informatics**
- **Creative Writing**
- **Geography and Planning**
- **Journalism, Media and Culture**
- **Law**
- **Occupational Therapy**
- **Psychology**
- **Social Work**

There are also various programmes available which accept undergraduate degrees from related fields of study or relevant work experience. All conversion courses are clearly marked in our course directory list.



# Studies to suit your lifestyle



We offer a wide range of postgraduate taught and research degrees, with flexible study options to fit your individual circumstances.

As a postgraduate student, you will be encouraged to develop a wide range of both subject-specific and transferable skills, enhancing your employability and equipping you with the capabilities you need to excel in your chosen discipline.

## Distance learning

We deliver flexible online programmes to postgraduate students around the world. Our dynamic e-learning programmes allow you to study with us no matter where you live, alongside your work or other commitments.

We offer a number of innovative online programmes spanning a broad range of subject areas. Our online programmes are academically equivalent to

qualifications earned through face-to-face learning and we take the delivery of teaching online just as seriously as we do on campus. The experienced academic team and your personal tutor will ensure you are fully supported in all aspects of your student experience.

Our distance learning courses provide you with the flexibility to study in a convenient location and at a time, pace and intensity that suits you. You will have access to our outstanding range of online resources and become part of our thriving e-learning community, bringing together students and tutors from across the globe and enabling you to enjoy the Cardiff experience no matter where you live.

## Blended learning

Some of our programmes are offered as blended learning, combining face-to-face classroom methods with computer-mediated activities or online provision.

## Part-time study options

Many of our academic schools offer part-time postgraduate courses, which are ideal if you need to balance study with professional, financial or family commitments. Part-time programmes offer greater flexibility and a less intensive workload whilst still providing all the benefits and support enjoyed by full-time students.



“

**The MSc Catalysis course at Cardiff was an excellent opportunity for me to gain an advanced understanding into the various topics available in the area of catalysis. I enjoyed being surrounded by enthusiastic and highly skilled academics and researchers from all levels and backgrounds, working within the prestigious Cardiff Catalysis Institute.**


The passion, support and knowledge which I gathered here ultimately led to the decision of pursuing a PhD in the area of heterogeneous catalysis. It is an absolute privilege to work amongst world-renowned scientists using state-of-the-art equipment and to collaborate with both industrialists and researchers from around the world.

The theory learnt throughout my MSc has been regularly put into practice, particularly during my end of year research project. The skills I acquired during my course have been essential throughout my PhD and have given me significant confidence in both bringing my ideas to reality, and in presenting my work to a wide variety of people.

**Anisa, MSc Catalysis**

”





# Academic Schools

# Architecture



The Welsh School of Architecture offers a wide range of programmes that reflect the School's research expertise.

We are one of the top-ranked schools of architecture in the UK, as indicated by our position in key league tables. We are listed as one of the **top 40** schools in the world specialising in architecture and the built environment (QS World University Rankings by Subject 2019).

Our diverse programmes are linked by an aim to develop the key skills that students will need to specialise in their field of interest and enhance their career opportunities. Through them, students acquire new knowledge but also the ability to be independent learners working at the forefront of their disciplines.

Our programmes are designed to be of value to those wishing to undertake specialist study after an undergraduate degree, as well as to professionals who may already be involved in designing, managing, enhancing and evaluating the built environment but wish to develop new skills. Many of our programmes offer part-time or distance-learning study options, making them suitable for working professionals wishing to remain in practice while studying.

Our long-standing record of teaching excellence means that our postgraduate programmes are popular and our graduates are in high demand.



I chose to undertake my postgraduate studies at the Welsh School of Architecture as the course has an excellent reputation for being the best in the UK. The course was extremely thorough and varied, giving me an excellent understanding of a wide range of professional practice, contract administration and other industry wide matters. I feel the course gave me the basis and confidence to start and run my own architectural practice, as well as to launch a national design review panel.

**Jonathan**  
Postgraduate Diploma  
Architecture: Professional  
Practice





# Biosciences



Our research spans the full range of biological and biomedical sciences, and seeks to deliver new solutions to global challenges that have major economic, societal and environmental impact.

Based on our research, we are ranked 13th in the UK, with **98%** of our submitted research rated as internationally excellent, world-leading or internationally recognised. **60%** of our research has been deemed 'outstanding' for its impact in terms of its reach and significance (REF 2014).

In the 2019 Academic Ranking of World Universities, Biological Sciences at Cardiff University was ranked in the **top 25** worldwide, and the **top 4** in the UK.

The School of Biosciences plays a lead role in several of the University's specialist research institutes, including the European Cancer Stem Cell Research Institute, Water Research Institute, Neuroscience and Mental Health Research Institute, Sustainable Places Research Institute, and the Medicines Discovery Institute.



Whilst studying for my undergraduate degree at Cardiff, Prof. Lynne Boddy's lectures enthused me about wood-decay fungi – so when a PhD project came up on the topic, I jumped at the chance!

Cardiff University is a great place to do a PhD, as there's lots of interesting research going on in the department and a lively sense of community amongst the postgraduates.

I've had opportunities to learn a lot of techniques and travel to interesting places, with plenty of fun along the way!

**Sarah**  
PhD Biosciences



# Business



We're an AACSB\* International accredited Business School with a clear purpose: to make a difference in the communities of Wales and the world.

We'll challenge you to think differently and give you the tools and techniques to bring about change in business and in society.

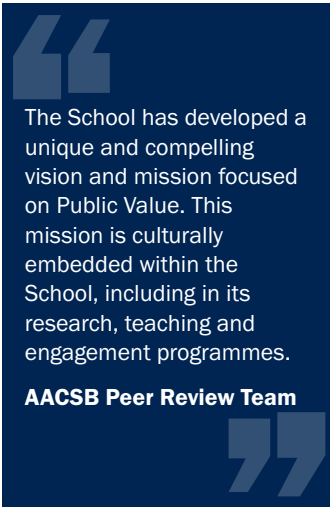
Every year, our academic, practitioner and support professionals educate over 3,000 students on accredited and future-focused programmes in Accounting and Finance, Economics, Management, Employment and Organisation, Strategic Marketing, and Logistics and Operations Management.

Our investment in study, support and social facilities offers you the very best environment in which to achieve success. The multi-million-pound Postgraduate Teaching Centre is home to Wales' largest Trading Room alongside state-of-the-art lecture theatres, seminar rooms, a coffee shop and dedicated postgraduate chill-out spaces.

In 2014, we ranked joint **1st** for our research environment and 6th for the quality of our research out of 101 UK Business Schools (REF 2014). We're also one of only two business schools in the UK to rank in the **top 10** in each government research exercise since 1992.

Our experts bring this world-class research into the classroom and balance theory with practical application, preparing you for graduate-level employment or a career in research.

We've been recognised by the Small Business Charter for promoting a culture of enterprise among our students. The award demonstrates our excellence in supporting students to develop entrepreneurial skills, attend mentoring events, enter competitions and work with our small business and social enterprise sector partners.



\* Association to Advance Collegiate Schools of Business





“

Lecturers are very helpful and always willing to discuss further queries, providing useful guidance and feedback, when needed. I've also had the chance to meet and cooperate with different people from different countries. Being exposed to an international environment has helped me expand my horizons and understand different cultures, making my studies at Cardiff University a fascinating experience.

**Panagiotis**

MSc Maritime Policy and Shipping Management

”





# Chemistry



Our internationally leading research and education is focused on tackling the important scientific challenges of the 21st century. We provide an outstanding and stimulating environment for chemical research and education.

Ranked **9th** in the UK, **95%** of our research output was rated internationally excellent or world-leading (REF 2014).

We are proud to be the first recipient of the prestigious **Regius Professorship** in Wales, awarded by Her Majesty the Queen in recognition of our long track record of exceptionally high quality research.

Our established record of collaborations with international companies helps our research to achieve global impact, as well as creating industrial opportunities for our students.

With an investment of over **£14M** in recent years, our extensive facilities enable research in all branches of core and interdisciplinary chemistry.

We are home to the renowned Cardiff Catalysis Institute, a University-supported initiative to establish an internationally leading centre of excellence for catalysis within the UK.

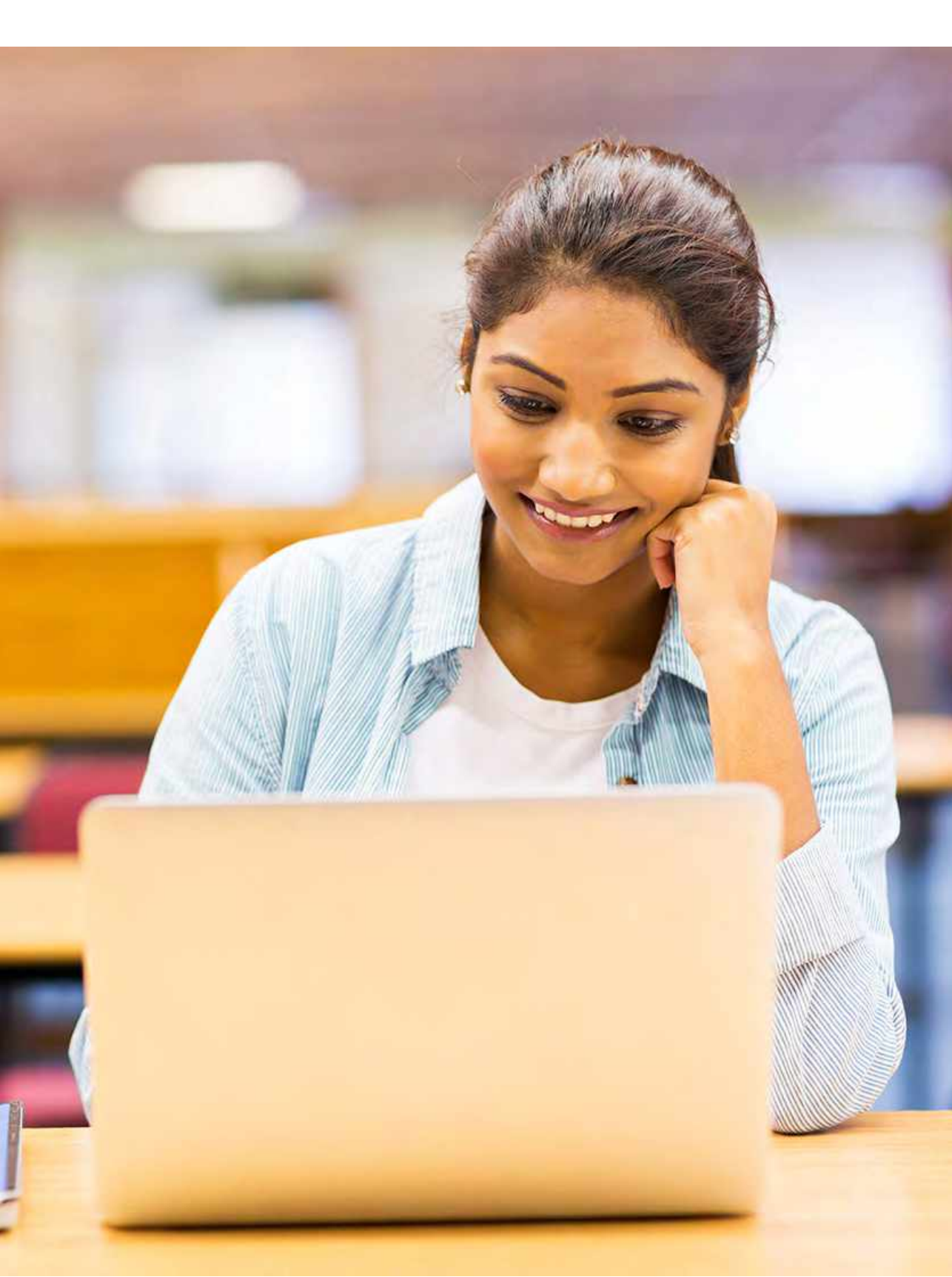
“

One of the many reasons I chose to study the MSc in Catalysis course at Cardiff University is the Cardiff Catalysis Institute. The CCI is a world renowned centre for research in the UK, offering degrees that give you the freedom to investigate a cutting-edge topic in depth, amongst leading researchers with truly first-class facilities. The course is taught by experts in their fields, bringing in-depth knowledge and heaps of enthusiasm.

The chemistry department itself is fantastically organised, providing support from the moment the course begins. Cardiff is a great city, with lots of things to do and a good atmosphere.

**Joseph**  
MSc in Catalysis

”





# Computer Science and Informatics

The School of Computer Science is committed to delivering inspiring teaching and cutting-edge research at the forefront of technological innovation.

We offer a **contemporary** portfolio of both specialist and conversion master's degrees catering to a variety of backgrounds and interests. Developed with input from UK and international organisations, our selection of taught master's degrees are **commercially relevant** and equip students with the practical skills sought by employers.

We're engaged in collaborations with more than **100** academic partners, enabling us to provide the valuable option of taking a salaried professional placement with some taught master's degrees.

Our strong links with **industry** put us at the forefront of technological development and provide excellent employment opportunities for students. Graduates have gone on to enjoy careers within a diverse range of organisations.

We also offer a range of conversion degrees – some with the option of placement – designed for graduates from non-computing backgrounds to develop the technical, analytical and professional skills required for a computing or software engineering role.

We have a talented **research community** which continues to make a valuable contribution to the rapidly-developing computer science sector, particularly in areas such as data privacy and cybersecurity, knowledge representation and reasoning, social computing and text and data mining.

Our long-standing, strong and dynamic research culture has given rise to our international reputation for world-class research. **99%** of our submitted research was rated at least of international standard, with **79%** classed as internationally excellent or world-leading.



The MSc Computing course packs a lot into one year. Beyond core-programming skills in several languages and software engineering practices, I was pleased that the wide range of module options allowed me to focus my studies around the areas which interested me the most. Cardiff itself is also a great place to get started in the world of computer science; frequent tech meet-ups and hack days are good opportunities to get ideas and advice.

**Matilda**  
MSc Computing



# Dentistry



The School of Dentistry has a reputation for excellence in teaching, research and clinical care, with a history of postgraduate education dating back over 40 years.

We have a range of taught master's courses that provide training in either clinical dental specialities or research methods in biomedical and life sciences.

Our Master's courses are delivered by **internationally recognised** clinicians and scientists who are undertaking world-leading research, and we were ranked as one of the top dental schools in the UK according to the latest Research Excellence Framework. This means that you will be taught by academics who are currently making a significant impact on healthcare delivery for the wellbeing of the community.

You will be based in the University Dental Hospital, the only dental facility of its kind in Wales, which provides a full range of dental specialty clinical services to a large number of patients and as such **excellent opportunities** for postgraduate clinical education.

The research laboratories are **state-of-the-art** which creates an ideal biomedical learning environment. We pride ourselves on the friendly and supportive culture of our School, and are confident that you will have an enjoyable student experience.

The Master of Clinical Dentistry (Prosthodontics) programme is a well-structured programme that involves all three different disciplines of restorative dentistry during the first year. I have the opportunity to undertake treatment for patients with complex cases under the supervision of a highly skilled and experienced consultants in restorative dentistry. The School is well-equipped with the latest technology in dentistry which will help you to develop your skills in your career as a Prosthodontist. Being a graduate from Cardiff University will offer me a great potential for professional and academic development when I return back to my home country.

**Ibrahim**  
Master of Clinical Dentistry  
(Prosthodontics)



# Earth and Ocean Sciences



Cutting-edge facilities and equipment underpin our high-quality teaching and specialist research across the disciplines of geology, geography and environmental sciences.

Established in 1891, our School fosters **world-class research** and has more than 55 academics, including two Fellows of the Royal Society. We utilise the latest analytical techniques and facilities, including a 3D seismic laboratory.

We are situated in the heart of Cardiff's civic centre, neighbouring the National Museum of Wales and its impressive geological collection.

We have an array of partnerships and ties with industry sponsors who support our research and our taught postgraduate degree in Applied Environmental Geography. From geotechnical and marine surveying firms to oil and gas companies, including Titan, BR Petrobras, and First Quantum, among many more.

**94%** of our research outputs were deemed world-leading or internationally excellent, ranking us **4th** in the UK for Earth Systems and Environmental Sciences (REF 2014).

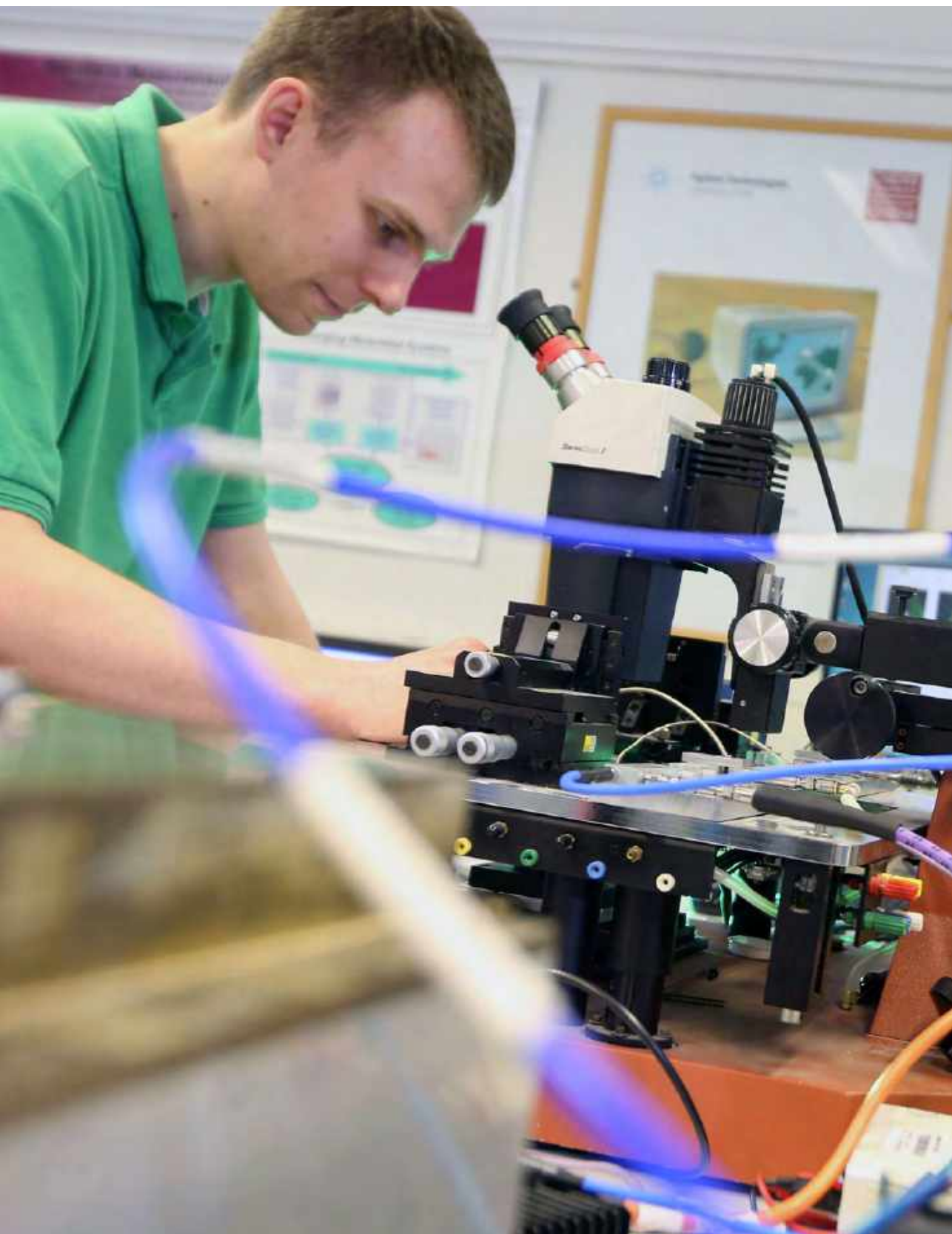


The standard of the research and facilities at Cardiff University is excellent and after completing my undergraduate degree here I knew that Cardiff was a great city to live and work in.

During the course of my PhD I've had an extremely rewarding academic experience and have enjoyed a thoroughly encouraging and supportive atmosphere.

**Bethan**  
PhD Earth Sciences







# Engineering

We are one of the leading engineering schools in the UK with a reputation for the highest quality research and a vibrant, friendly teaching environment.

We offer a wide range of specialist taught and research degree programmes which are carefully designed to enable you to upgrade your engineering knowledge and skills and to specialise in a particular area.

In the latest Research Excellence Framework (REF 2014), we were ranked **1st** in the UK for Civil Engineering and **7th** in General Engineering, which incorporated our Mechanical and Electrical and Electronic Engineering disciplines.

We were also rated **1st** in the UK for the impact of our research across all of our disciplines (REF 2014).

We have strong links with industry and our graduates are highly sought after by national and multinational employers.

Our students benefit from our excellent research facilities and working with engineers who are leaders in their fields. Many of our staff are involved in large-scale, internationally recognised research projects.

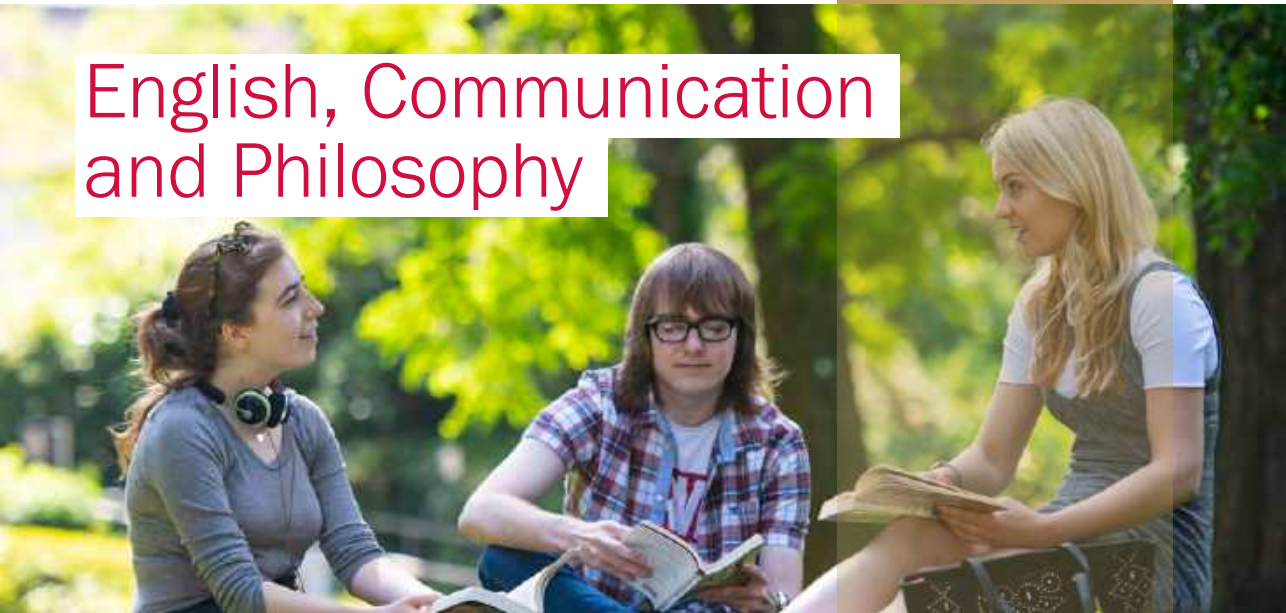


I chose Cardiff University because of the opportunity to work in an inspired research environment with people who care not only about the quality of the work they are doing but its greater impact. The level of support, from supervisors, administrators, staff and other students, fosters a positive learning environment and encourages research students to step out of their comfort zones, embrace their abilities and be impactful with their work.

**Jon**  
PhD Engineering



# English, Communication and Philosophy



We value critical rigour, creative thinking, and intellectual inquisitiveness.

Enriched by our diverse, international student community, we explore new perspectives, examining key issues in the study of language, texts, cultures, ideas, values and identities.

Our wide range of postgraduate programmes offers you the opportunity to study a subject at an advanced level while also gaining crucial academic and transferable skills such as high-level critical thinking, analysis and problem solving, together with independent research skills.

The School is one of the largest of its kind in the UK, with over **70** teaching, research and professional service staff.

We're ranked in the **top 10** overall for English Language and Literature and 4th for the impact our research in Philosophy has on society (REF 2014).

We're positioned in the **top 100** universities for the study of English Language and Literature (QS World University Rankings by Subject 2019).



I was struck by the School's vibrant and supportive atmosphere. My PhD has flourished with the help of excellent supervision, countless workshops, research seminars and networking opportunities, and an active and welcoming PhD community. As a self-funded student, I was fortunate to secure several scholarships from charities and smaller funding bodies. PhD students also have the opportunity of gaining paid teaching experience by leading undergraduate seminars.

**David**  
PhD Language and  
Communication





# Geography and Planning

We have built our reputation across the boundaries of spatial and urban planning, urban design and human geography to become one of the leading human geography and planning schools in the UK.

Our programmes focus on the impacts of economic, social, political, environmental and cultural change, and the built and natural environments. While geography provides the theoretical and analytical skills to understand both the nature of change and its impacts, planning and urban design translates this understanding into action to ensure a better quality of environment for present and future generations.

We are recognised as a centre for research excellence - **85%** of our research is rated as world-leading or internationally excellent (REF 2014) - and consistently perform strongly in league tables.

We are in the **Top 100** for Geography in the QS World University Rankings by Subject 2019 and ranked **8th** in the UK for Town and Country Planning and Landscape in The Times/ Sunday Times Good University Guide 2019.



One of my favourite aspects about the School of Geography and Planning is its truly global perspective - students, lecturers, and case studies from across the world enhanced the rich learning environment I experienced. I loved the opportunity to study alongside students and learn from experts who bring their diverse backgrounds and lived experiences into the classroom.

Studying at Cardiff University as an international student has given me a truly global viewpoint, but the best part is that I now have friends all across the world!

**Matthew**  
MSc Urban and Regional  
Development



# Healthcare Sciences



It can be difficult to keep up with the latest developments and further your healthcare education, whilst balancing work or other commitments. We will support you in gaining clinical and academic skills to apply in your workplace and further your career.

Join a School where **100%** of our submitted research rated at least of international standard with **94%** classed as internationally excellent or world leading in the Research Excellence Framework (REF) 2014 (under Allied Health Professions, Dentistry, Nursing and Pharmacy). We also ranked **4th** in the UK overall and **1st** for our research environment.

Our programmes are designed to help you meet the challenges of a rapidly changing health care environment and make a valuable contribution to patient care and clinical practice.

Plus, we make sure that we offer a supportive learning environment for you; that's why you will be designated a **personal tutor** who will be there to help and advise you throughout the duration of your programme.



In respect of my PhD I have learnt a lot throughout my journey here, such as critical thinking, teamwork, leadership and communication skills. Interacting and making friends with local and international students with different backgrounds, has made me enjoy every minute of my experience.

Cardiff is a multicultural city where you can find almost everything you need, in that respect it's quite similar to London. Cardiff has made me feel at home with its shopping centres, beautiful scenes at Cardiff Bay, coffee shops and a variety of restaurants.

**Fawaz**  
PhD in Healthcare





# History, Archaeology and Religion

Follow your passion for our subject in a highly respected School with a wealth of leading academics, researchers and resources.

Ranked **12th** in Archaeology in the UK, **20th** in History (**10th** in Ancient History) and **10th** in Theology and Religious Studies in the UK's Research Excellence Framework (REF 2014).

Our academic interests cover a range of specialisms, including History, Ancient History, Welsh History, Archaeology, Archaeological and Historical Conservation, Religious Studies, Theology and Chaplaincy.

Our latest research projects span a wide geographical, chronological and cultural range, from bioarchaeology changing our understanding about the prehistoric and Stonehenge, to demonology in ancient Judaism and Christianity.



I found it easy to join the research community and to get involved with the School. The department provides several opportunities for PhD students to work together and to make friends – having our own office especially helps.

**Ulrika**  
PhD Ancient History







# Journalism, Media and Culture

Those of you who enrol with us in September will be amongst the first students to call Two Central Square your new home, as we make the most of our state-of-the-art building situated in the heart of Cardiff's media community.

All our academic and accredited degrees are designed to be consistently relevant to a rapidly changing media and communications environment, and always informed by the most recent professional innovations and academic research.

Nationally and internationally, we are a top rated school of research excellence, media teaching and journalism training.

We're ranked Europe's sixth best for Communications and Media Studies and **25th** globally (QS World University Rankings by Subject 2019).

The Guardian Good University Guide 2020 ranks us **4th** in the UK for Journalism, Publishing and Public Relations.



The School's new Two Central Square location is strategic and ideal for journalism students. I enjoyed the practicality of the course and the fact that my tutors had a wealth of experience in journalism made the course very engaging.

This degree will help me secure my ideal job because not only have I acquired the skills necessary for a career in journalism, I have also put them into use under the pressures of real world deadlines.

**Antonia**  
MA International Journalism





We are committed to providing an outstanding teaching and learning experience and our teaching is underpinned by our excellent research activity.

We are the only Russell Group university in the UK to offer complete professional legal training: the Graduate Diploma in Law (GDL), Legal Practice Course (LPC) and Bar Professional Training Course (BPTC).

**84%** of our research was rated as world-leading or internationally excellent (REF 2014).

**80%** of our research has been deemed outstanding for its impact in terms of its reach and significance.

**94%** of our postgraduate taught students were in employment or further study within six months of graduating.\*

We attract students from all over the world and offer a friendly, supportive and culturally diverse School in which to study.

\* combined data for the School of Law and Politics, HESA Employment Performance Indicator 2016/17.



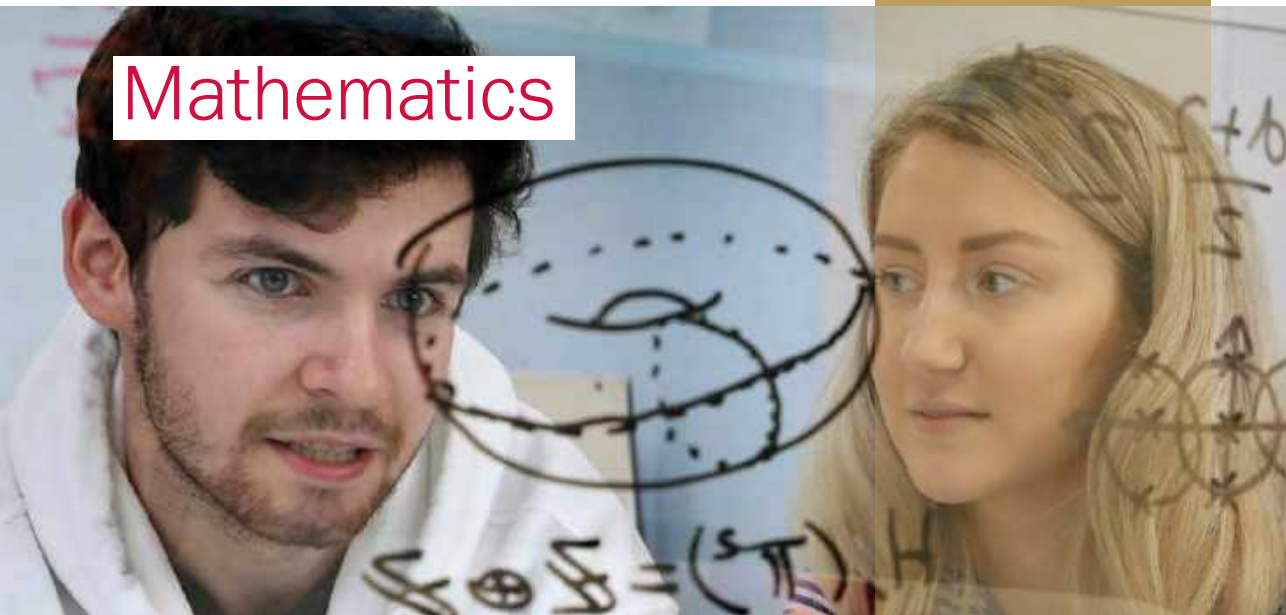
I decided to take a master's degree at Cardiff because I felt it had the expertise to give me the knowledge I needed. During the course I developed a deeper interest in the subject and so I decided to move on to a PhD. I was also encouraged by my tutors in terms of the support I was given. The Law School has a very interactive learning environment. Not only that, but both tutors and fellow students alike helped organise social activities for the students on the LLM Human Rights Law.

**Ivan**  
PhD Law





# Mathematics



The School of Mathematics offers a vibrant and supportive environment for postgraduates, spanning pure and applied mathematics, data science and analytics, financial risk, statistics and operational research.

Our selection of postgraduate taught courses offer you the chance to benefit from intensive teaching while building on the skills and knowledge gained during your first degree.

Our **leading academics** offer a multidisciplinary approach and students enjoy direct contact with potential employers, as well as the opportunity to work alongside industry on relevant projects and dissertations. You'll leave the course with a major research project to feature on your CV. The research project will put your skills to the test, working with one of our expert research staff on genuine mathematical or statistical problems.

We also offer a variety of research opportunities for students across a broad range of mathematical subjects.

**100%** of our research was rated as 'outstanding' or 'very considerable' for its impact in terms of its reach and significance (REF 2014).

**100%** of our submitted research was rated at least of international standard, with **90%** classed as internationally excellent or world-leading (REF 2014).

The skills that you will learn as part of your postgraduate degree are highly transferable for use within industry, business and the public sector.

We offer a drop-in service where students with any mathematical question can get help either one-to-one or in a small group. The service is available to all Cardiff University students.



My PhD research focuses on game theory and the study of cooperative behaviour, more specifically in the pioneering field of the Iterated Prisoner's Dilemma. During my postgraduate studies at Cardiff University I have been given numerous opportunities to promote my work through conferences, public engagement events and publications. I had the chance to travel to several countries, teach mathematics and computing and to promote the role of women in the STEM fields.

**Nikoleta**  
PhD Mathematics







# Medicine



We are one of the largest providers of medical research and teaching in the UK, with a long-standing record of world-class research and educational innovation.

We ranked **8th** in the UK for Clinical Medicine in the most recent UK government assessment of research excellence (REF 2014), with **80%** of our research in this field deemed outstanding for its impact in terms of reach and significance.

Our postgraduate taught programmes are highly vocational, flexible, and focused on enhancing the skills and careers of healthcare professionals.

We have longstanding expertise in developing and supporting e-learning. Many of our distance learning programmes are designed to encourage mutual participation and collaboration, with an interprofessional approach to enhancing online group work and discussions.

Many of our programmes are structured to enable you to evaluate topics in relation to your practice areas of interest and professional base, helping you turn theory into practice in ways that benefit you and your patients.

“

This course has been everything I had hoped it might be: relevant; interesting; broad and collaborative. The ability to study at a distance and flexibility to plan my own learning has enabled me to use the materials and focus the assignments on topics relevant to my work. As a GP educator working in Australia, it has been great working alongside colleagues in other medical disciplines, in other parts of the world, learning together and from each other.

**Esther**

PgDip Medical Education  
(e-learning)

”

# Modern Languages



With an international reputation for excellence in research and teaching, we give you the opportunity to pursue your interest in languages and cultures in an exciting, interdisciplinary environment with strong links with the world of work.

**84%** of our research was rated as world-leading or internationally excellent\* (REF 2014).

We are ranked **7th** in the UK for the quality of our research\* (REF 2014).

Latest figures show that **100%** of our postgraduate taught students were in employment or further study within six months of graduating (HESA Employment Performance Indicator 2016/17).

\*joint submission with the School of Welsh



“

After working for over a decade as a Spanish subject lead in a Welsh medium secondary school, I decided to enrol on the Translation Studies (MA) to develop my knowledge and skills as well as fulfil my own academic ambitions. The School of Modern Languages has a friendly and supportive atmosphere and I was fortunate to study alongside some inspiring people. Between us we spoke over fifteen languages in total which gave the course an international and multilingual feel – a microcosm of the world we live in.

**Meleri**  
MA Translation Studies

”



# Music

We offer postgraduate training in music studies, performance and composition within a lively and imaginative liberal arts setting. We provide a stimulating, friendly and supportive environment where students and staff work together in studying, creating and making music.

We are situated within a capital city with a rich artistic culture that combines Wales' strong musical traditions with contemporary trends. Cardiff is home to the Welsh National Opera, BBC National Orchestra of Wales, National Museum Wales, a major BBC production centre, and numerous other cultural organisations. We benefit from collaborative links with many of these establishments.

We're ranked joint **7th** overall for Music in the UK (Times Good University Guide 2019).

We're ranked **2nd** among UK university music departments for the quality of our research environment (REF 2014).

Our 250-seat concert hall hosts our annual concert series, as well as regular workshops and masterclasses.

Our students work and study in a research community, learning from academic staff with expertise in composition, performance, musicology, ethnomusicology, and popular music.



One of the things I liked most about the MA in Music course has been the opportunities for students on the Music Studies, Composition and Performance pathways to work and study together, such as at the weekly Postgraduate Forum, where we can share and discuss our areas of interest. I have really enjoyed playing with the University Symphony and Chamber Orchestras as well as in small ensembles, performing in the School's concert hall and St David's Hall in Cardiff. Having completed my undergraduate degree elsewhere I found the department very welcoming and all the staff have been friendly and helpful.

**Thomas**  
MA Music



# Optometry and Vision Sciences



Our research, teaching and clinical practice are housed in a purpose-built optometry and vision sciences centre with the facilities you need to achieve your ambitions.

We are the only optometric training department in Wales, and one of the largest in the UK.

The Complete University Guide 2020 ranks us **2nd** in the UK for Optometry, Ophthalmology and Orthoptics.

In the most recent Research Excellence Framework (REF 2014), our research quality was ranked **4th** in the UK as part of 'Allied Health'.

We collaborate with leading external institutions such as Bristol Eye Hospital, UCL, University of Bristol and other GW4 universities, as well as Schepens Eye Research Inst (Harvard).



I have been very fortunate to have gained my undergraduate degree and to be studying for my PhD at the School of Optometry and Vision Sciences. After working in clinical practice for several years, coming back to the School felt like coming home. There is so much support from all the staff and other postgraduate students and the facilities are excellent for both biological and clinical research. Studying for my PhD here has given me many opportunities, including travelling the world, showcasing my research at national and international conferences, and working with international collaborators. It has been a very fulfilling and rewarding experience.

**Greg**  
PhD student



# Pharmacy and Pharmaceutical Studies



We are recognised internationally for our high quality teaching and cutting-edge research. We are also among the leaders in clinical skills development.

In the most recent Research Excellence Framework (REF 2014) we were ranked the **joint top** School of Pharmacy in the country. That's because our dedicated researchers pave the way in creating new, effective methods for delivering drugs and explore how they can be used to better treat some of the most debilitating and life-threatening medical conditions

Our **award-winning** research projects include microneedle technology, cancer drug discovery, novel antimicrobial development and digital transformation of residential care.

It's this same team of researchers, as well as external expert practitioners, who teach our postgraduate students and help to enhance their careers.



The MSc in Cancer Biology and Therapeutics is a truly integrated course which delves deeper into the science behind cancer. It has also given me the opportunity to see the disease and its treatment from the clinical side as well. Whether you're a Pharmacist, Biomedic or Medic, you'll find something in this course that you'll enjoy and can relate to. And, like me, you'll be in better stead for your future too.

**Lauren**  
MSc Cancer Biology and  
Therapeutics



# Physics and Astronomy



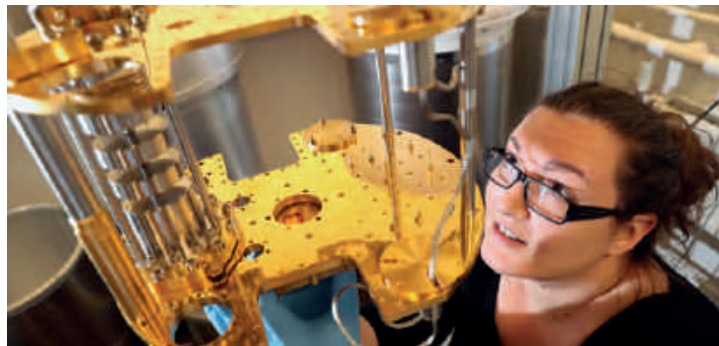
Studying with us offers you the opportunity to gain a fundamental understanding of the way the Universe works as well as providing you with the skills for a wide range of careers. You will join a thriving postgraduate community within a friendly, supportive environment.

**99%** of our submitted research was rated as internationally excellent or world-leading (REF 2014).

Our MSc students benefit from a dedicated suite of facilities within the School.

Our School is the home for the EPSRC Centre for Doctoral Training in Compound Semiconductor Manufacturing, and the Institute of Compound Semiconductors which will form part of the University's new £300m Innovation Campus.

All of our students benefit from first-class research facilities and are made to feel part of our research community.



“

Besides the engaging elective modules, and the carefully curated and thoroughly well taught core modules, the best thing about the MSc is the individual support offered that just isn't present at undergraduate study. The summer projects offered are the perfect insight into the breadth of research available at Cardiff. I came into the MSc as a student, and left it feeling more like a research scientist.

**Joseph**  
MSc Physics

”



# Politics and International Relations



We pride ourselves on world-class research and an international reputation for excellence. Following an expansion in 2017, our teaching team is one of the largest in the UK.

A vibrant student body combined with highly qualified academic staff provides the perfect environment for you to explore the dynamic and fast-paced field of Politics and International Relations.

All our programmes are taught by academics who are internationally recognised for their expertise in the field.

**81%** of our research was rated as world-leading or internationally excellent (REF 2014).

**94%** of our graduates of 2016/17 who were available for employment had secured work or further study (combined data for the School of Law and Politics, HESA Employment Performance Indicator 2016/17).



As a policy practitioner for Public Health Wales, this seemed the perfect course to enhance my professional development, giving me the skills and confidence to further develop my work. I've enjoyed the proactive engagement with lecturers and fellow students, all of us sharing knowledge and experience and helping each other to achieve. I was concerned that being a mature student, I might be a bit isolated, however this has simply not been the case – in fact, I think other students may have even benefitted from hearing some of my 'real world' policy experiences.

**Adam**  
MSc Politics and Public Policy







# Psychology



We offer a diverse and carefully designed suite of stimulating postgraduate programmes that incorporate independent research and professional practice activities to help advance your career prospects and achieve your learning goals.

Our research quality was ranked **2nd** in the UK for Psychology (REF 2014).

Cardiff University Brain Research Imaging Centre (CUBRIC) is one of Europe's top facilities for brain imaging and houses state-of-the-art neuroimaging equipment, including a Connectom scanner – **one of only three in the world.**

Cardiff University Centre for Human Development Science is a dedicated research and teaching centre for developmental psychology, with access to a range of specially designed laboratory spaces including a sensory room.

Our centre of excellence in Human Factors research (HuFEX) fosters collaborations with industry, business, and the third sector to promote and pursue applications of psychological research.

We have also been selected as the hub for a **£5m** climate change research centre, The Centre for Climate Change and Social Transformations. The centre will design and trial the fundamental transformations needed to produce a low-carbon and sustainable society.

“

Studying Neuroimaging at Cardiff opened a number of doors for scientific discovery and personal development for me. Being based in CUBRIC with world-leading researchers also provided me with the unique opportunity to experience and get involved with fascinating neuroscience research.

**Izzy**

MSc Neuroimaging:  
Methods and Applications

”

# Social Sciences



We are an interdisciplinary teaching and research community and internationally recognised centre of excellence.

We offer postgraduate programmes that allow students to pursue focused studies relevant for developing academic interests and expertise, engaging in informed democratic public debate and activism, as well as entering a range of professions and vocations across the public and private sectors.

As a School we enjoy excellent links with local and national government, major private and public sector organisations and the third sector.

In the last Research Excellence Framework (REF 2014) we were ranked **3rd** in the UK for research quality in Sociology and **5th** for Education. We have one of the highest levels of research grant capture in the UK, securing over **£32.5M** since 2015.

We offer a range of professional programmes to help you advance in your career whilst gaining a recognised qualification. Some of our programmes can be studied part-time, allowing you the flexibility to study alongside your current employment.



During my time at the School of Social Sciences I was supported with tutorials, workshops, lectures and seminars. Both the academic and professional support staff were incredibly approachable and accommodating. I was also fortunate enough to be involved with the student newspaper and undertake a two-week work placement during my degree. The MSc in Science Communication provided me with the opportunity to get both hands-on and academic experience. Deciding to study at Cardiff University is one of the best decisions that I have made.

**Lizzie**  
MSc Science Communication





# Welsh



We are a vibrant and welcoming community of academics and students committed to the development of language, literature, society, culture and identity in contemporary Wales and internationally.

At Master's level, we offer an innovative and flexible MA taught programme and a research-intensive MPhil programme, while our PhD programme provides an opportunity to complete an extensive research project within a dynamic and challenging environment.

Our programmes can be undertaken in Welsh or English, are delivered and supervised by experts in the fields of literature and linguistics and allow you to study a diverse range of issues and themes connected to Welsh and other languages. Subject areas include: Welsh literature through the ages; literary criticism; children's literature; sociolinguistics; language policy and planning; and, translation theory and methodology.

We are ranked **7th** in the UK for research quality in 'Modern Languages and Linguistics'\*, with **84%** of our submitted research rated as world-leading or internationally excellent, and achieved **100%** for research impact (REF 2014).

\*joint submission with the School of Modern Languages



The programme has been exciting, useful and very interesting, providing me with the opportunity to research in greater depth the themes that interested me during my undergraduate studies. Without a doubt, the programme's flexibility and variety makes it a unique postgraduate offering allowing you to develop a greater understanding of a range of subjects concerned with the Welsh language, and Welsh and Celtic peoples.

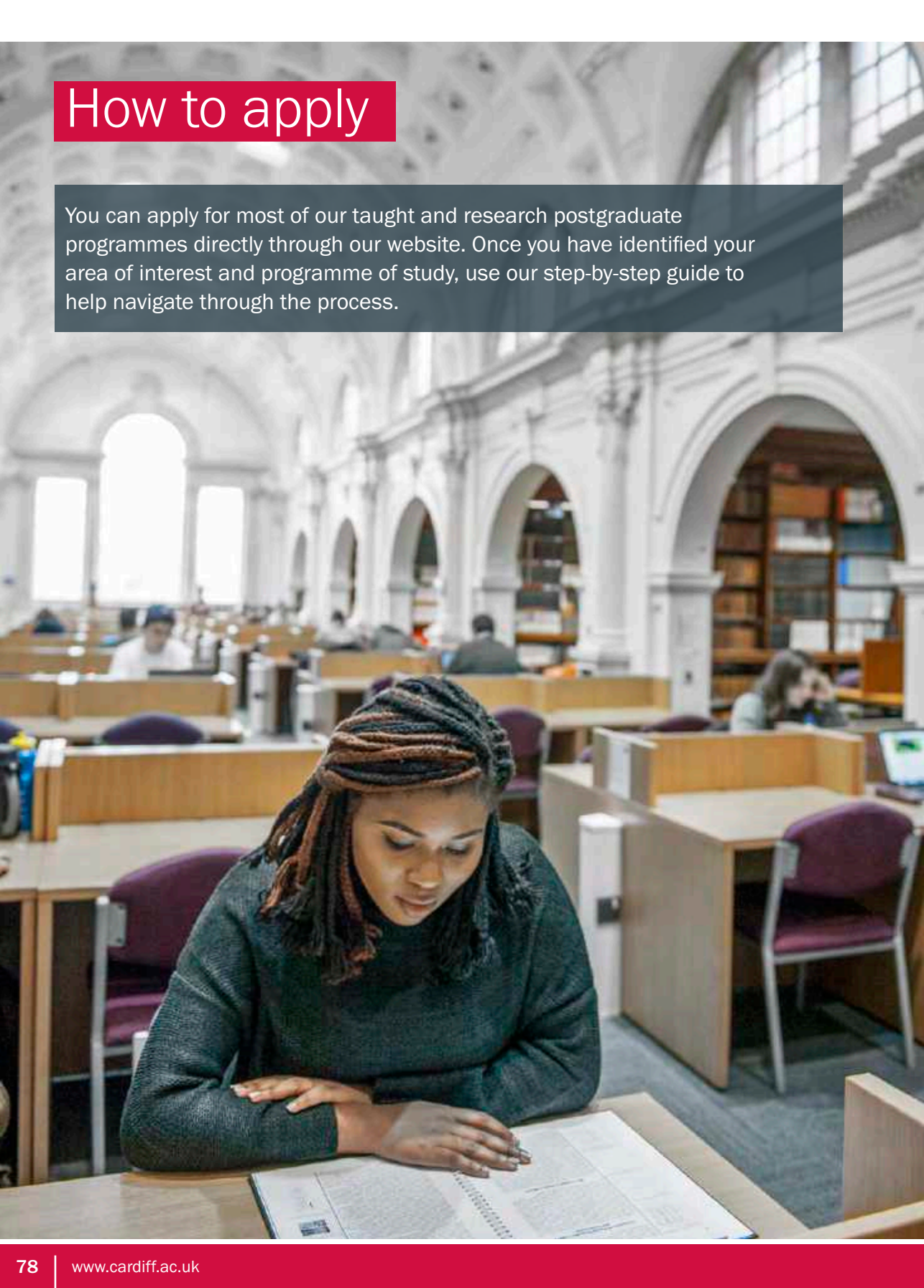
The programme is well worth following and you are guaranteed a warm welcome. You really will become part of a close-knit and supportive community.

**Osian**  
MA Welsh and Celtic Studies



# How to apply

You can apply for most of our taught and research postgraduate programmes directly through our website. Once you have identified your area of interest and programme of study, use our step-by-step guide to help navigate through the process.



## Before you apply

**STEP 1:** Identify your programme on our online CourseFinder pages. Check whether there is an application deadline, when the programme starts and make sure you meet all entry requirements listed.

**STEP 2:** Investigate funding options. Unless you are intending to apply for a fully funded studentship, we advise you to consider how you will fund your studies before making an application. Some postgraduate funding options may require you to have secured an offer of admission prior to applying for the funding. For more information on funding your study, see pages 34-35.

## Applying

**STEP 3:** You can submit an application directly using our online application service, which allows you to save your progress and return at a later time. You will receive an automatic acknowledgement of your application when submitted and be granted access to the online applicant portal, where you can track your application, upload any additional supporting documents and update your contact details.

## Your offer

You can track the progress of your application in our online applicant portal. You will also receive an email containing the details of your offer. Most applicants will receive an offer within four weeks, although some may take longer. Your offer could be:

### Conditional:

You need to submit additional evidence. In most cases this will mean providing copies of your qualification certificates when they become available.

### Unconditional:

You have been offered a place – congratulations!

UK/EU students: in most cases, all you will need to do to secure it is to accept your offer.

International students: You will need to accept your offer and pay a deposit to secure your place.

## Applying for an MPhil or PhD

It's important that you conduct some background research to help you identify the MPhil or PhD programme that can support your research interests and career goals.

### OPTION 1:

**Apply with your own idea and find a supervisor**

Before submitting your application, it is a good idea to discuss your proposal with the School and a potential supervisor. They may be able to suggest improvements, direct you to a more suitable supervisor and help you identify funding opportunities.

### OPTION 2:

**Apply to a Pre-defined Research Project**

Many Schools advertise research projects that have been proposed by supervisors, many of which are funded. To apply for these projects, you usually do not need to submit a research proposal. However, you should discover more about the potential supervisor and project before you apply.

### OPTION 3:

**Apply to a narrow research area**

Some Schools advertise narrow research areas, where the specific project has not been detailed but the supervisors and topic have been identified. These opportunities allow you to develop



your research with a supervisor in a specified area.

### OPTION 4:

**Apply to a Doctoral Training Initiative**

We are currently leading or participating in a range of funded specific doctoral training initiatives. Each of these has its own application process and deadlines.

## Your research proposal

A research proposal should outline your proposed area of study and what you hope to achieve through your research. You should contact the academic school that your area of interest is based within so they can provide you with specific requirements.

As a general guideline, a research proposal may include:

- Title for the proposed research project
- A concise summary of the research project
- Literature review
- Aims and questions to be addressed
- Significance of research
- Methodology and design
- List of key academic publications



# Getting here

Excellent transport links with other major UK cities – along with our close proximity to two international airports – ensure that Cardiff is a truly accessible destination.



## By air

Cardiff International Airport offers regular direct flights to 25 worldwide locations, and connects to a further 150 onward destinations through Qatar Airways. Located just an hour away by car, bus and rail, Bristol International Airport serves a further 80 cities across the globe.

## By train

Cardiff is located on the South Wales Mainline with fast, direct trains to London leaving every half an hour, up to 30 times a day. Frequent rail and coach services also connect Cardiff with major towns and cities across the UK:

Destination	Travel time
London	2 hours
Manchester	3 hours
Bristol	45 mins
Birmingham	2 hours
Bath	1 hour

## By car

Cardiff is served by the M4 and is easily accessible from all areas of the UK. As the city is so compact, it's unlikely you'll need a car to get around.

The contents of this prospectus relate to the Entry 2020 admissions cycle and are correct at the time of going to press in July 2019. However, there is a lengthy period of time between printing this prospectus and applications being made to and processed by us, so please check our website - **www.cardiff.ac.uk** before making an application, in case there are any changes to the course you are interested in or to other facilities and services described here. Where there is a difference between the contents of this prospectus and our website, the contents of the website take precedence and represent the basis on which we intend to deliver our services to you.

If you feel that any of the information is misleading then please write to:

David Roylance, Communications and Marketing,  
Cardiff University, Friary House, Greyfriars Road,  
Cardiff CF10 3AE.

Tel: +44 (0)29 2087 0408

Any offer of a place to study at Cardiff University is subject to terms and conditions, which can be found on our website **www.cardiff.ac.uk** and which you are advised to read before making an application. The terms and conditions set out, for example, when we might make changes to your chosen course or to student regulations. It is therefore important you read them, and understand them.

**Your degree:** Students admitted to Cardiff University study for a Cardiff University degree.



**Edited by:** Ann-Marie Ramsay, Postgraduate Recruitment Office, Cardiff University

**Designed by:** Barry Diamond, Cardiff University

**Printed by:** McLays (Cardiff)

This prospectus is printed on paper obtained from well managed sources using vegetable-based inks. Both the paper used in the production of this prospectus and the manufacturing processes are FSC® certified. The printers are also accredited to ISO14001, the internationally recognised environmental standard.

View the prospectus on our website:  
[www.cardiff.ac.uk/postgradprospectus](http://www.cardiff.ac.uk/postgradprospectus)

This prospectus can be made available in alternative formats, please contact:

Publications Officer

Tel: +44 (0)29 2087 4455

Email: [enquiry@cardiff.ac.uk](mailto:enquiry@cardiff.ac.uk)

CARDIFF  
UNIVERSITY

PRIFYSGOL  
CAERDYDD

## Follow us

Connect with us for the latest news, including new programmes and funding opportunities.



@cardiffuni



facebook.com/cardiffuni



instagram.com/cardiffuni



youtube.com/user/cardiffuni

## Contact us

Students from the UK:

Tel: **029 2087 0084**

Email: **postgradenquiries@cardiff.ac.uk**

Students from the rest of the world:

Tel: **+44 (0)29 2087 4432**

Email: **international@cardiff.ac.uk**



THE QUEEN'S  
ANNIVERSARY PRIZES  
FOR HIGHER AND FURTHER EDUCATION  
2017





Cardiff University  
**Course Directory**  
**2020**

# Postgraduate

**Come and see us at our Open Day!**

Wednesday 4 December 2019

[cardiff.ac.uk/postgraduate](http://cardiff.ac.uk/postgraduate)

Subject	Award	Full-Time / Part-Time	Mode
---------	-------	-----------------------	------

### ACCOUNTING AND FINANCE

T	Accounting and Finance	MSc	FT	
T	Finance	MSc	FT	

You may also be interested in Business; Economics

### ARCHAEOLOGY AND CONSERVATION

T	Archaeological Science	MSc	FT/PT	
T	Archaeology	MA	FT/PT	
T	Care of Collections ♦	MSc	FT/PT	
T	Conservation Practice ♦	MSc	FT	
T	Professional Conservation	MSc	FT/PT	
R	Archaeology	PhD, MPhil	FT/PT	
R	Conservation	PhD, MPhil	FT/PT	

You may also be interested in History; Religious and Theological Studies

### ARCHITECTURE

T	Advanced Building Performance Evaluation	MSc	FT/PT	
T	Architecture: Professional Practice (RIBA/ARB Part 3)	PgDip	FT/PT	BL
T	Architectural Design	MA	FT	
T	Computational Methods in Architecture	MSc	FT/PT	
T	Environmental Design of Buildings	MSc	FT/PT	DL
T	Environmental Design of Buildings	MSc	FT/PT	
T	Master of Design Administration	MDA	FT/ PT	BL
T	Sustainable Building Conservation	MSc	FT/PT	
T	Sustainable Mega-Buildings	MSc	FT/PT	
T	Urban Design	MA	FT	
R	Architecture	PhD, MPhil	FT/PT	
R	Creative Practice in Architecture	PhD	FT/PT	

You may also be interested in Engineering; Geography and Planning

### BIOSCIENCES

T	Global Ecology and Conservation	MSc	FT	
T	Tissue Engineering and Regenerative Medicine ♦	MSc	FT	
R	Biosciences	PhD, MPhil, MD	FT/PT	
R	Biosciences	MRes	FT	
R	Integrative Neuroscience	PhD	FT	
R	Stem Cell Neurobiology	MRes	FT	

You may also be interested in Earth and Ocean Sciences; Optometry and Vision Sciences; Pharmacy and Pharmaceutical Sciences

### BUSINESS

T	Business Management ♦	MSc	FT	
T	Master of Business Administration	MBA	FT	
T	Executive Master of Business Administration	MBA	PT	
T	Human Resource Management	MSc	FT/PT	
T	Master of Business Administration with Media	MBA	FT	
T	Public Leadership	MSc	PT	
T	Social Science Research Methods (Management and Business Studies)	MSc, PgDip	FT/PT	
R	Business Studies	PhD	FT/PT	

You may also be interested in Accounting and Finance; Economics; Management, Employment and Organisation

### CHEMISTRY

T	Advanced Chemistry	MSc	FT	
T	Biological Chemistry	MSc	FT/PT	
T	Catalysis	MSc	FT/PT	
T	Medicinal Chemistry	MSc	FT/PT	
R	Chemistry	PhD, MPhil	FT/PT	

You may also be interested in Biosciences

Subject	Award	Full-Time / Part-Time	Mode
---------	-------	-----------------------	------

### COMPUTER SCIENCE AND INFORMATICS

T	Advanced Computer Science	MSc	FT/PT
T	Advanced Computer Science with a Professional Placement Year	MSc	FT
T	Artificial Intelligence	MSc	FT
T	Computational and Data Journalism	MSc	FT
T	Computing ♦	MSc	FT/PT
T	Computing with Placement ♦	MSc	FT
T	Computing and IT Management ♦	MSc	FT/PT
T	Computing and IT Management with Placement ♦	MSc	FT
T	Cybersecurity	MSc	FT/PT
T	Data Science and Analytics	MSc	FT/PT
T	Software Engineering	MSc	FT
R	Computer Science and Informatics	PhD, MPhil	FT/PT

You may also be interested in Mathematics and Statistics; Physics and Astronomy

### CREATIVE WRITING

T	Creative Writing ♦	MA	FT
R	Creative and Critical Writing	PhD	FT/PT

You may also be interested in English; Linguistics and Communication; Philosophy

### DENTISTRY

T	Implantology	MSc	FT
T	Master of Clinical Dentistry (Endodontology)	MClinDent	FT
T	Master of Clinical Dentistry (Prosthodontics)	MClinDent	FT
T	Oral Biology	MSc	FT
T	Orthodontics	MScD	FT
T	Tissue Engineering and Regenerative Medicine ♦	MSc	FT
R	Dentistry	PhD, MPhil	FT/PT

You may also be interested in Biosciences; Healthcare; Medicine; Optometry and Vision Sciences; Pharmacy and Pharmaceutical Sciences; Physiotherapy

### EARTH AND OCEAN SCIENCES

T	Applied Environmental Geology	MSc	FT
R	Earth Sciences	PhD, MPhil	FT/PT

You may also be interested in Biosciences

### ECONOMICS

T	Financial Economics	MSc	FT
T	International Economics, Banking and Finance	MSc	FT
R	Economics	PhD	FT

You may also be interested in Accounting and Finance; Business

### ENGINEERING

T	Advanced Mechanical Engineering	MSc	FT
T	Building and Infrastructure Information Modelling (BIM) for Smart Engineering	MSc	FT
T	Civil Engineering	MSc	FT/PT
T	Civil and Geoenvironmental Engineering	MSc	FT/PT
T	Civil and Water Engineering	MSc	FT/PT
T	Communication Technology and Entrepreneurship	MSc	FT
T	Compound Semiconductor Electronics	MSc	FT
T	Electrical Energy Systems	MSc	FT
T	Manufacturing Engineering, Innovation and Management	MSc	FT
T	Sustainable Energy and Environment	MSc	FT/PT
T	Structural Engineering	MSc	FT/PT
T	Wireless and Microwave Communication Engineering	MSc	FT/PT
T	Wireless and Microwave Communication Engineering with a Research Year	MSc	FT
T	Wireless and Microwave Communication Engineering with a Year in Industry	MSc	FT
R	Engineering	PhD, MPhil	FT/PT
R	Engineering	EngD	FT



Subject	Award	Full-Time / Part-Time	Mode
---------	-------	-----------------------	------

### Engineering *continued*

R	EPSRC Centre for Doctoral Training in Compound Semiconductor Manufacturing	PhD	FT
R	EPSRC Centre for Doctoral Training in Resilient Decarbonised Fuel Energy Systems	PhD	FT
R	Wireless and Microwave Communication Engineering	MRes	FT

You may also be interested in Architecture; Physics and Astronomy

### ENGLISH

T	English Literature	MA	FT/PT
R	Critical and Cultural Theory	PhD, MPhil	FT/PT
R	English Literature	PhD, MPhil	FT/PT

You may also be interested in Creative Writing; Journalism, Media and Culture; Linguistics and Communication; Philosophy

### GEOGRAPHY AND PLANNING

T	Eco-Cities	MSc	FT
T	Environment and Development	MSc	FT
T	International Planning and Development ♦	MSc	FT
T	International Planning and Urban Design	MSc	FT
T	Planning Practice	PgCert	PT
T	Social Science Research Methods (Environmental Planning)	MSc, PgDip	FT/PT
T	Spatial Planning and Development ♦	MSc	FT/PT
T	Sustainability, Planning and Environmental Policy	MSc	FT/PT
T	Transport and Planning	MSc	FT
T	Urban Design	MA	FT
T	Urban and Regional Development	MSc	FT/PT
R	Geography and Planning	PhD	FT/PT

You may also be interested in Architecture; Engineering

### HEALTHCARE SCIENCES

T	Advanced Practice	MSc	FT/PT
T	Clinical Photography	PgCert	PT DL
T	Community Health Studies (SPQ)	PgDip	FT/PT
T	Managing Anaesthesia Care	MSc	FT/PT
T	Non-Medical Prescribing	PgCert	PT
T	Specialist Community Public Health Nursing	PgDip	FT/PT
R	Healthcare Sciences	PhD, MPhil	FT/PT

You may also be interested in Medicine; Occupational Therapy; Pharmacy and Pharmaceutical Sciences; Physiotherapy; Radiography

### HISTORY

R	Ancient History	PhD, MPhil	FT/PT
R	History and Welsh History	PhD, MPhil	FT/PT

You may also be interested in Archaeology; Religion

### JOURNALISM, MEDIA AND CULTURE

T	Broadcast Journalism ♦	MA	FT
T	Computational and Data Journalism ♦	MSc	FT
T	Cultural and Creative Industries	MA	FT
T	Digital Documentaries	MA	FT
T	Digital Media and Society	MA	FT
T	International Journalism ♦	MA	FT
T	International Public Relations and Global Communications Management ♦	MA	FT
T	Journalism, Media and Communications	MA	FT
T	Magazine Journalism ♦	MA	FT
T	Media Management	MBA	FT
T	News Journalism ♦	MA	FT
T	Political Communication ♦	MA	FT
T	Science Communication	MSc	FT
R	Journalism, Media and Culture	PhD, MPhil	FT/PT

You may also be interested in English; Linguistics and Communication

Subject	Award	Full-Time / Part-Time	Mode
<b>LAW</b>			
T Bar Professional Training Course (BPTC)	LLM, PgDip	FT	
T Canon Law	LLM, PgDip	PT	DL
T Canon Law	PgCert	FT	DL
T European Legal Studies	LLM	FT	
T Governance and Devolution	LLM	FT	
T Graduate Diploma in Law (GDL) ♦	GDip	FT	
T Human Rights Law	LLM	FT	
T Intellectual Property Law	LLM	FT	
T International Commercial Law	LLM	FT	
T Law	LLM	FT	
T Legal Aspects of Medical Practice	LLM	PT	DL
T Legal and Political Aspects of International Affairs	LLM	FT	
T Legal Practice Course (LPC)	LLM, PgDip	FT/PT	
T Shipping Law	LLM	FT	
T Social Care Law	LLM	FT	
T Social Science Research Methods (Social-Legal) (Law)	MSc, PgDip	FT/PT	
R Law	PhD, MPhil	FT/PT	
You may also be interested in Management, Employment and Organisation; Politics and International Relations			
<b>LINGUISTICS AND COMMUNICATION</b>			
T Applied Linguistics	MA	FT/PT	
T Forensic Linguistics	MA	FT/PT	
T Language and Communication Research	MA	FT/PT	
T Language and Linguistics	MA	FT/PT	
R Language and Communication	PhD, MPhil	FT/PT	
You may also be interested in Creative Writing; English; Journalism, Media and Culture			
<b>LOGISTICS AND OPERATIONS MANAGEMENT</b>			
T Logistics and Operations Management	MSc	FT	
T Maritime Policy and Shipping Management	MSc	FT	
T Sustainable Supply Chain Management	MSc	FT	
You may also be interested in Business; Management, Employment and Organisation; Marketing and Strategy			
<b>MANAGEMENT, EMPLOYMENT AND ORGANISATION</b>			
T Business Management ♦	MSc	FT	
T Human Resource Management	MSc	FT/PT	
T International Human Resource Management	MSc	FT	
T International Management	MSc	FT	
You may also be interested in Business; Logistics and Operations Management; Marketing and Strategy			
<b>MARKETING AND STRATEGY</b>			
T Business Strategy and Entrepreneurship ♦	MSc	FT	
T Marketing ♦	MSc	FT	
T Strategic Marketing	MSc	FT	
You may also be interested in Business; Logistics and Operations Management; Management, Employment and Organisation			
<b>MATHEMATICS AND STATISTICS</b>			
T Data Science and Analytics	MSc	FT/PT	
T Mathematics	MSc	FT	
T Operational Research and Applied Statistics	MSc	FT/PT	
T Operational Research, Applied Statistics and Financial Risk	MSc	FT/PT	
R Mathematics	PhD, MPhil	FT/PT	
You may also be interested in Computer Science and Informatics			

Subject	Award	Full-Time / Part-Time	Mode
<b>MEDICINE</b>			
T Advanced Surgical Practice	MSc	PT	DL
T Ageing Health and Disease	MSc	FT/PT	
T Bioinformatics	MSc	FT/PT	
T Bioinformatics and Genetic Epidemiology	MSc	FT/PT	
T Clinical Dermatology	MSc	FT	
T Clinical Leadership and Leading Change in Cardiology	MSc, PgDip	PT	DL
T Critical Care	MSc	PT	DL
T Diabetes	MSc, PgDip	PT	DL
T Genetic and Genomic Counselling	MSc	PT	DL
T Medical Education (e-learning)	MSc, PgDip, PgCert	PT	DL
T Medical Education	MSc, PgDip	FT/PT	
T Medical Toxicology	MSc, PgCert	PT	DL
T Medical Toxicology	PgDip	FT/PT	DL
T Neonatal Medicine	MSc, PgDip	PT	DL
T Occupational Health (Policy and Practice)	MSc	PT	DL
T Pain Management	MSc	PT	DL
T Pain Management (Primary and Community Care)	MSc, PgDip, PgCert	PT	DL
T Palliative Medicine for Health Care Professionals	MSc	PT	DL
T Practical Dermatology	MSc	PT	DL
T Practical Dermatology	PgDip	FT/PT	DL
T Psychiatry	MSc	FT/PT	DL
T Public Health	MPH	FT/PT	
T Therapeutics	MSc, PgDip, PgCert	PT	DL
T Therapeutics	PgDip	FT	DL
T Wound Healing and Tissue Repair	MSc	PT	DL
R Integrative Neuroscience	PhD	FT	
R Medicine	PhD, MPhil, MD	FT/PT	
R Stem Cell Neurobiology	MRes	FT	
You may also be interested in Dentistry; Healthcare; Optometry and Vision Sciences; Pharmacy and Pharmaceutical Sciences; Physiotherapy			
<b>MODERN LANGUAGES</b>			
T Global Cultures	MA	FT	
T Translation Studies	MA	FT/PT	
R Languages and Translation Studies	PhD, MPhil	FT/PT	
You may also be interested in English; Linguistics and Communication; Welsh			
<b>MUSIC</b>			
T Music	MA	FT/PT	
R Music	PhD, MPhil	FT/PT	
<b>OCCUPATIONAL THERAPY</b>			
T Occupational Therapy	MSc	FT/PT	
T Occupational Therapy (Pre-registration) ♦	PgDip	FT	
You may also be interested in Healthcare; Medicine; Pharmacy and Pharmaceutical Sciences; Physiotherapy; Radiography			
<b>OPTOMETRY AND VISION SCIENCES</b>			
T Clinical Optometry	MSc	FT	
T Clinical Optometry	MSc, PgDip, PgCert	PT	DL
T Eye Care Governance	PgCert	PT	DL
T Glaucoma	PgCert	PT	DL
T Therapeutic Prescribing for Optometrists	PgCert	PT	DL
R Vision Sciences	PhD	FT/PT	
You may also be interested in Dentistry; Healthcare; Medicine; Pharmacy and Pharmaceutical Sciences; Physiotherapy			



Subject

Award

Full-Time /  
Part-Time

Mode

**PHARMACY AND PHARMACEUTICAL SCIENCES**

T	Cancer Biology and Therapeutics	MSc	FT	
T	Clinical Pharmacy	MSc, PgDip, PgCert	PT	DL
T	Clinical Research	MSc	PT	DL
T	Pharmacist Independent Prescribing	Level 7 (non degree)	PT	DL
R	Pharmacy and Pharmaceutical Sciences	PhD, MPhil, MD	FT/PT	

You may also be interested in Biosciences; Dentistry; Healthcare; Medicine

**PHILOSOPHY**

T	Philosophy	MA	FT/PT	
R	Philosophy	PhD, MPhil	FT/PT	

You may also be interested in Creative Writing; English; Linguistics and Communication

**PHYSICS AND ASTRONOMY**

T	Astrophysics	MSc	FT	
T	Compound Semiconductor Physics	MSc	FT	
T	Data-Intensive Astrophysics	MSc	FT	
T	Data-Intensive Physics	MSc	FT	
T	Gravitational Wave Physics	MSc	FT	
T	Physics	MSc	FT	
R	EPSRC CDT in Compound Semiconductor Manufacturing	PhD	FT	
R	Physics and Astronomy	PhD, MPhil	FT/PT	

You may also be interested in Computer Science and Informatics; Mathematics and Statistics

**PHYSIOTHERAPY**

T	Physiotherapy	MSc	FT/PT	
T	Sport and Exercise Physiotherapy	MSc	FT/PT	

You may also be interested in Healthcare; Occupational Therapy

**POLITICS AND INTERNATIONAL RELATIONS**

T	International Relations	MScEcon	FT/PT	
T	Politics and Public Policy	MScEcon	FT/PT	
T	Welsh Government and Politics	MScEcon	FT/PT	
T	Social Science Research Methods (International Relations)	MSc, PgDip	FT/PT	
T	Social Science Research Methods (Politics)	MSc, PgDip	FT/PT	
R	Politics and International Relations	PhD, MPhil	FT/PT	

You may also be interested in Law

**PSYCHOLOGY**

T	Cognitive and Behavioural Therapies	PgDip, PgCert	PT	
T	Children's Psychological Disorders	MSc	FT	
T	Neuroimaging: Methods and Applications	MSc	FT	
T	Psychology ♦	MSc	FT	
T	Social Science Research Methods (Psychology)	MSc, PgDip	FT/PT	
R	Clinical Psychology	DClinPsy	FT	
R	Educational Psychology	DEdPsy	FT	
R	Integrative Neuroscience	PhD	FT	
R	Psychology	PhD	FT/PT	

You may also be interested in Healthcare; Medicine; Optometry and Vision Sciences; Social Sciences

**RADIOGRAPHY**

T	Radiographic Reporting	PgDip, PgCert	PT	
T	Radiography	MSc	FT/PT	

You may also be interested in Healthcare; Occupational Therapy

Subject	Award	Full-Time / Part-Time	Mode
---------	-------	-----------------------	------

### RELIGIOUS AND THEOLOGICAL STUDIES

T	Chaplaincy Studies	MTh, PgDip, PgCert	PT
T	Chaplaincy Studies: Military	MTh	PT
T	Islam in Contemporary Britain	MA, PgDip	FT/PT
T	Theology	MTh, PgDip, PgCert	FT/PT
R	Religious and Theological Studies	PhD, MPhil	FT/PT

You may also be interested in Archaeology, History; Social Sciences

### SOCIAL SCIENCES

T	Childhood and Youth	MSc	FT/PT
T	Crime, Safety and Justice	MSc	FT/PT
T	Education, Policy and Society	MSc	FT/PT
T	Post-Compulsory Education and Training (PCET)	PGCE	FT
T	Science Communication	MSc	FT
T	Social and Public Policy	MSc	FT/PT
T	Social Science	MSc	FT/PT
T	Social Science Research Methods (Criminology)	MSc, PgDip	FT/PT
T	Social Science Research Methods (Educational Studies)	MSc, PgDip	FT/PT
T	Social Science Research Methods (Science and Technology Studies)	MSc	FT/PT
T	Social Science Research Methods (Social Policy)	MSc, PgDip	FT/PT
T	Social Science Research Methods (Social Work)	MSc, PgDip	FT/PT
T	Social Science Research Methods (Sociology)	MSc, PgDip	FT/PT
T	Social Work ♦	MA	FT
R	Doctor of Education	EdD	PT
R	Doctor of Health Studies	DHS	PT
R	Doctor of Social and Public Policy	SPPD	PT
R	Doctor of Social Work	DSW	PT
R	Social Sciences	PhD, MPhil	FT/PT

You may also be interested in Linguistics and Communication; Psychology; Religious and Theological Studies

### WELSH

T	Welsh and Celtic Studies/Astudiaethau Cymreig a Cheltaidd	MA	FT/PT
R	Welsh/Cymraeg	PhD, MPhil	FT/PT

You may also be interested in English, Modern Languages