



**UNIVERSITY OF
PORTSMOUTH**



INTERNATIONAL STUDENT GUIDE

2022





Welcome from the Vice-Chancellor

Choosing where to study your degree is a life-changing decision which will have a profound effect on your future. You will be pleased to hear that, as a global university, we celebrate diversity through an inclusive culture and a vibrant international community.

Here, at the University of Portsmouth, you will expand your knowledge and expertise, and realise your potential by enhancing your employability, building your confidence and developing new friendships and networks.

It is people that make great universities, and everyone at Portsmouth is committed to helping you enjoy the best experience possible.

We look forward to welcoming you!

Professor Graham Galbraith
Vice-Chancellor



Welcome from the Pro Vice-Chancellor

We are pleased that you are considering the University of Portsmouth as a potential study destination. We are a global university with a student population of 31,000 with 5,200 international students from around 150 countries. We are proud of the diversity we have in this University and you will be assured a warm welcome if you choose to study with us. More importantly, we ensure that our graduates have the hallmarks of a Portsmouth graduate with a global outlook.

Our students are well prepared for their future careers and the world of work. That is why the latest HESA Graduate Outcomes Survey (conducted in 2019) shows that 94 per cent of our undergraduate students are in work or study within six months of graduation.

We proudly achieved a Gold rating in the UK Government's Teaching Excellence Framework. This is the highest possible award. It is proof of the superior standard of teaching we provide. Our 5-star rating in the QS World University Rankings also reflects the excellent education experience you can expect at Portsmouth.

We hope that you will find the information in this guide helpful and that you will consider the University of Portsmouth as your future study destination.

Chris Chang
Pro Vice-Chancellor
Global Engagement and Education Partnerships



Contents

4–51

Why the University of Portsmouth is for me

- 4 Why the University of Portsmouth?
- 6 Living in Portsmouth
- 7 10 reasons to love Portsmouth
- 8 Student life
- 10 Student experience
- 14 Advice and support
- 17 Best begins when you get career-ready
- 18 Get the best from global opportunities
- 20 Study in the UK for a term or a year
- 22 English language requirements and support
- 24 Visas and immigration
- 26 Halls of residence
- 29 Student accommodation
- 30 Funding and scholarships
- 36 Research and learning
- 38 Best begins when outstanding teaching happens every day
- 40 Best begins with a campus built for the future
- 42 Play. Train. Compete.
- 44 Lean, green and fit for the future
- 46 Pathway programmes to the University of Portsmouth

52–73

Course information

- 52 Browse our courses by category

74–89

Useful information

- 74 Your steps to apply
- 78 How to apply and entry requirements
- 80 Terms and conditions
- 81 Contact us
- 82 Course index
- 88 How to find us



TOP 150

**YOUNG UNIVERSITIES
IN THE WORLD**

*TIMES HIGHER EDUCATION
YOUNG UNIVERSITIES
RANKINGS 2020*

5★

UNIVERSITY

QS TOP UNIVERSITIES 2021

TOP 20

**MOST AFFORDABLE CITY
TO LIVE IN THE UK**

*NATWEST STUDENT
LIVING INDEX 2020*

94%

**OF OUR GRADUATES
IN WORK AND/OR
FURTHER STUDY**

*HESA GRADUATE OUTCOMES
SURVEY CONDUCTED IN 2019*

5,200

**INTERNATIONAL
STUDENTS**

FROM AROUND 150 COUNTRIES

TOP 30

**STUDENT
SATISFACTION**

*NATIONAL STUDENT
SURVEY 2020*

Why the University of Portsmouth?

WE ARE A UNIVERSITY DEDICATED TO YOU AND YOUR FUTURE



At the University of Portsmouth, your degree is a journey of discovery and a chance to find out what you are really capable of.

We offer outstanding teaching, support that lets you push yourself to achieve more, and learning that goes beyond the classroom. Whether you need help to develop study

skills or advice on settling into life in a new country, we are here for you every step of your journey. We will help you develop the confidence, skills and knowledge to create the future you want.

For all these reasons and more, we say: your best begins at the University of Portsmouth.



You are welcome

We welcome 5,200 international students from around 150 different countries. So wherever you are coming from, we can help you get to where you want to be.

Teaching excellence

We hold the Gold standard from the UK Government's Teaching Excellence Framework. This government scheme recognises excellent teaching in UK universities. Gold is the highest accolade and places us among the UK's top universities for teaching.

Superb facilities

We are always improving and updating. Latest spends include a £5.2 million Centre for Creative and Immersive eXtended Reality (CCIXR), a £12 million centre to inspire a new generation of engineers, and a £57 million sports facility, opening in autumn 2021, as part of our £400 million plan for the future of our campus.

Guaranteed room in halls

We are able to guarantee a room in University halls of residence to all new, full-time and campus-based students who accept an offer to join us and meet our accommodation deadlines.*

Loved by students

We are in the top 30 UK universities for full-time student satisfaction (National Student Survey 2020).

Excellent employment outcomes

94 per cent of our graduates are in work and/or further study six months after leaving us (HESA Graduate Outcomes survey conducted in 2019).

Great place to live

Portsmouth is an exciting island city with lots of culture and great entertainment choices. It is also one of the top 20 most affordable cities in the UK for students (NatWest Student Living Index 2020).

Global standing

We are one of the world's top 150 young universities (Times Higher Education 2020 Young University Rankings). These rankings reveal the best universities under 50 years old, assessing them across teaching, research, international outlook and their work with industry.



*When starting courses in September or October 2022.

+44 (0)23 9284 3488 | global@port.ac.uk | www.port.ac.uk

Living in Portsmouth



10 reasons to love Portsmouth

1. Maritime heritage

Home to the Royal Navy, Portsmouth is a proud maritime city. Portsmouth Historic Dockyard hosts HMS Victory and the award-winning Mary Rose Museum among other famous attractions. You can also visit Southsea Castle, where Henry VIII stood and watched the Mary Rose sink in 1545.

2. The Hotwalls Studios and Old Portsmouth

Part of Old Portsmouth's historic Hotwalls area hosts 13 studios where you can see the work of local artists, designers and creative companies – great for inspiration.

3. Café culture and diverse food

It is easy to find a place for coffee or somewhere to eat in Portsmouth. Albert Road is perfect for quirky cafés, bars and restaurants that serve all types of cuisine. You will also find cafés and pubs along the cobbled streets of historic Old Portsmouth.

4. Music and entertainment

The Kings Theatre, the New Theatre Royal and Portsmouth Guildhall all offer a fantastic range of plays, live shows and music concerts. The Wedgewood Rooms in Southsea holds regular comedy nights, live bands and club nights. And the annual Victorious music festival on Southsea Common is not to be missed.

5. Beyond the city

From Portsmouth, it is easy to get to London, Brighton, the Isle of Wight and other great places for a weekend stay or day trip. For Europe, you are just a ferry ride or short flight away.



6. A city that is easy to get around

Portsmouth is a compact city – you can travel from historic ships to bustling shopping streets in minutes. The city is flat – perfect for walking and cycling.

A brilliant place to be

Your best days will begin on the UK's only island city: Portsmouth. A place of pretty beaches and vivid street art, rich in naval history and home to all kinds of independent start-up businesses, Portsmouth is an ideal place for an adventure in life and learning.

The University of Portsmouth is located through the main part of this unique city on England's south coast. The campus is close

to all amenities and just a short walk from the seafront. Living in a hall of residence that feels like home, inspiration will always be on your doorstep. From here, you can go anywhere.

Well connected

Southsea seafront is a short walk from the city centre and main University campus. Here you can enjoy fantastic sea views, four miles of beach and the green spaces of Southsea Common, ideal for meeting friends and having

summer picnics. The Common also hosts live music, running events and even a kite festival.

If you want to see more of the UK, you will find good road and rail links to other major cities. The bright lights of London are just a 90-minute direct train journey away. Heathrow, Gatwick and Southampton airports are within easy reach. Ferries cross regularly to France and Spain, making Portsmouth an excellent base for exploration.

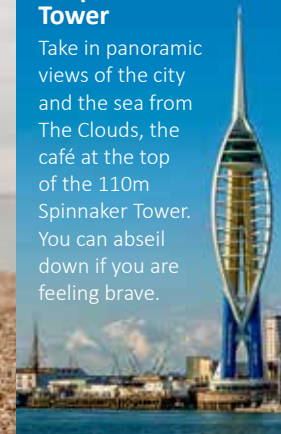
7. Fun at the beach

You are never far from the beach in Portsmouth. And where there is a beach, you will find fish and chips and ice cream!



8. Spinnaker Tower

Take in panoramic views of the city and the sea from The Clouds, the café at the top of the 110m Spinnaker Tower. You can abseil down if you are feeling brave.



9. A historic and literary city

Portsmouth is the birthplace of Charles Dickens and has also been home to Arthur Conan Doyle and Rudyard Kipling. These literary greats are celebrated at museums throughout the city and with special events.

10. A place you can relax

Portsmouth is known for its green spaces. Southsea Common and Canoe Lake are close to the seafront and are perfect for summer barbecues, winter walks and meeting up with friends.



Student life

LIFE AT THE UNIVERSITY OF PORTSMOUTH IS ABOUT SO MUCH MORE THAN JUST STUDYING



The Students' Union offers a wealth of opportunities for you to get involved in, try new things, and access support and advice.

Representation and advice when you need it

Our Students' Union enriches the daily lives of Portsmouth students. The Union is led by student-elected officers who are supported to cultivate their skills and experiences, and inspire other students to do the same.

The Union gives students a voice, standing up for the things you care about. It offers access to active, engaging and thought-provoking student group activities that broaden your horizons, increase

your employability and help you make lifelong friends. Whatever your needs, the Students' Union is here to offer support and advice throughout your student life.

To find out more, visit www.upsu.net.

Student groups

There are a huge range of student-led groups, covering sports and physical activities, culture, politics, faith and much more. Take to the stage, debate your views or be a part of organising inclusive and exciting events.

Whether you are living on campus or studying from a distance, there will be exciting opportunities for you to gain more than your degree from your university experience.

Here is a sample of what is on offer:

- Afro-Caribbean • Amnesty International • Anime • Boxing • Breakdance • Cinema • Cuban Salsa • Five-a-side Football • Gaming • Gospel Choir • Ice Hockey • Indian • Islamic • Japanese • Judo • Kayak • Kickboxing, Mixed Martial Arts (MMA) & Brazilian Jiu Jitsu (BJJ) • Korean • Malaysian • Music • Re-enactment • Rounders • Scuba • Tap Dance

Visit www.upsu.net/student-groups

The
UNION

Global Week is one of our most popular annual events. We celebrate the diversity of the people who make up our University community.



Student experience

WHAT DO OUR INTERNATIONAL STUDENTS THINK OF THE UNIVERSITY OF PORTSMOUTH?



'My favourite part of the course is the programming and the practical sessions.'

Vlad Oltean,
BSc (Hons) Cyber Security and Forensic Computing

'I began an undergraduate course in Malaysia and then transferred to the University of Portsmouth in year two – the thing that really hooked me? The facilities. There's a fully functioning forensic lab that I can use here! Now I'm studying forensic psychology, with elements of criminology, that is focused on understanding the abnormalities in people's thinking and learning how to fix them!'

Lena Lee Yun Shin,
BSc (Hons) Forensic Psychology



'Studying at the University of Portsmouth has allowed me to get new opportunities and make a lot of connections that supported me in leaving a positive impact in the community, and on the people around me!'

Mohammad Alatoum,
BSc (Hons) Software Engineering

'Throughout my time at the University of Portsmouth, I've thoroughly enjoyed my studies. I've met some great friends and the University staff have helped me achieve everything I wanted to in my final collection!'

Venus Haochun Chen,
BA (Hons) Fashion and Textiles

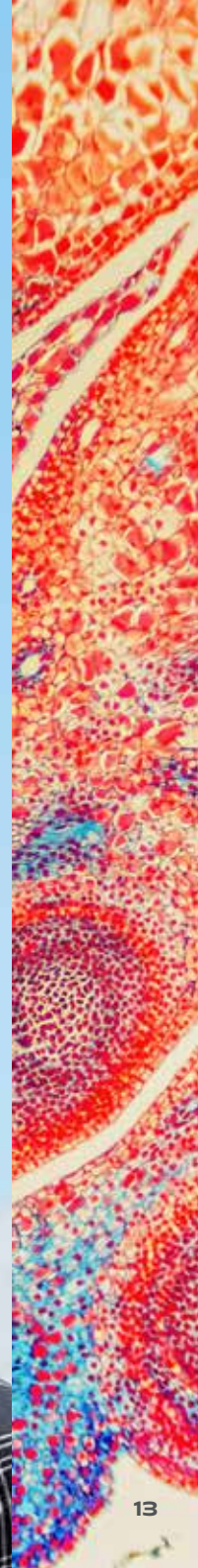


'The University of Portsmouth happens to be the top institution in the field of forensic accounting and I was so excited by the modules offered. Also, I was able to network with those in academia, practitioners and regulators in my field through the annual Counter-Fraud Conference!'

Bolaji Iyiola,
PhD Accounting and Financial Management

'I love the flexibility my course allows. I'm able to apply my degree to a wide range of careers!'

Jordan Rydlewski,
BA (Hons) International
Relations and Politics



Advice and support

MOVING TO A NEW COUNTRY IS EXCITING BUT CAN BE CHALLENGING. WE TAKE GREAT CARE TO HELP YOU SETTLE IN, SO YOU CAN MAKE THE BEST OF YOUR TIME AT PORTSMOUTH. THE SUPPORT BEGINS LONG BEFORE YOU TRAVEL.



We have offices and advisers in Delhi, Dhaka, Kuala Lumpur, Lahore, Lagos and Shanghai as well as in Portsmouth.

Our offices and advisers in Portsmouth, and around the world, are here to help. We regularly travel overseas to attend events and exhibitions. If we come to your country, we will be very happy to answer your questions in person. See our travel schedule at www.port.ac.uk/meet-us-overseas.

International Orientation Programme

This programme is designed to help you settle in and make new friends before you start your course. It is completely free.

We can help with:

- completing your registration with the University
- settling into your accommodation before term starts
- learning about the support services available to you
- joining in social events including walking tours, coach tours, sporting events and plenty more

Airport pick-up service

We offer a coach pick-up service on specific dates from London Heathrow airport for a fee. We will meet you and take you straight to your accommodation. To find out more, visit www.port.ac.uk/how-to-get-here.

International Student Advisers

We want your time with us to be as enjoyable and stress free as possible, so that you are free to focus on your studies and do your best.

Our dedicated advisers are ready to help with:

- immigration and visa advice
- confidential advice
- social events and excursions
- referrals to other support services within the University

Global Community — a whole world within your reach

This is a Facebook group run by our International Student Advice Team. Join the group to meet current students, learn about other cultures and find out about great events. With over 5,200 students at Portsmouth from all around the world, you could make a friend for life. Find out more on our Facebook group 'University of Portsmouth – Global Community'.

Student advice and support services

If you have other questions, we offer a range of further support services, designed to help you. Visit www.port.ac.uk/support.

Money matters

If you need advice on budgeting or managing your money, our Student Finance Centre can advise you on all your financial matters. No appointment necessary. Find out more at www.port.ac.uk/money.

Stay healthy

It is a good idea to register with a doctor as soon as you arrive. We can tell you which doctor's surgery is closest to your accommodation. You may also be able to register at the University Dental Academy and Eye Clinic.

Additional Support and Disability Advice Centre (ASDAC)

If you have a disability, medical condition or additional learning needs which may affect your ability to access the campus, teaching and learning, assessment or examinations, contact ASDAC for confidential advice and guidance. Visit www.port.ac.uk/asdac for more information.

Academic help and support

If you would like advice and guidance on specific academic and study skills, our Academic Skills Unit (ASK) can help with everything from tutorials on essay writing, through to presentations and more. Visit www.port.ac.uk/ask for more information.

Student Wellbeing Service

It is natural to feel a little unsure when you move somewhere new. If you ever need a friendly ear, our Counselling and Wellbeing Services offer confidential support. Courses, workshops, self-help resources, face-to-face counselling, email counselling and mental health support are all available.

Nursery facilities

Our nursery can take care of children aged between six months and five years. If you need to apply for a place, please do so as soon as you can.

Chaplaincy

We offer support to all students regardless of faith or world view. A small quiet room is available for reflection, thought and prayer. There are dedicated Islamic prayer rooms, with associated ablutions.

Maths Café

If you would like help with your mathematical and statistical skills, visit our Maths Café. It is free of charge and you can drop in at locations around campus for one-to-one maths support, or visit the Maths Café resource base. For more information, visit www.port.ac.uk/mathscafe.



Global Café

If you want to meet other students in a friendly, informal environment then the Global Café is for you. Getting to know students from other countries, you can share knowledge and experiences of different cultures and languages, or just chat over a hot drink.





'Portsmouth is a place where everybody is welcomed!'

Inas Zakaria,
BA (Hons) Accounting
with Finance

Best begins when you get career-ready

WE AIM TO GIVE YOU ALL YOU NEED TO THRIVE IN THE WORLD OF EMPLOYMENT



Work-related learning

- This is part of all our courses
- Working environments such as our Dental Academy and industry-standard newsroom for journalism students let you practise skills for your professional career
- Many courses are accredited, approved or recognised by Professional Statutory Regulatory Bodies (PSRBs)
- We organise regular talks from employers, many of which run career-specific seminars

Learning on the job

- Our dedicated placement offices facilitate work experience with local and national employers – from short experiences to summer and year-long industrial placements

- We can provide you with a range of volunteering opportunities, so you can gain valuable experience
- Many volunteering opportunities are in community-based projects, and we promote openings through our Volunteering Fair and Online Jobs Board

Getting you on the career ladder

- The Careers and Employability Service is here to help you make the best start you can on the rest of your professional life
- From the first day of your first year, and up to five years after you graduate, we can help you develop the abilities and find the opportunities you need to achieve your ambitions

- Career planning advice
- Help to find and apply for graduate jobs
- Support to start your own business
- Personal tutor that can provide guidance on professional development

Part-time work

- Many students choose to work part time while they study
- Portsmouth is a city with a wide range of part-time jobs
- The Careers and Employability Team can help you find part-time work
- We usually advertise around 1,500 part-time opportunities from 450 employers each year

For more information, visit www.port.ac.uk/careers-and-employment

**UK'S MOST
ENTREPRENEURIAL
CITY**
INSTANT OFFICES 2020

**NO.20
UNIVERSITY IN
THE UK**
STUDENT CROWD 2020

TEF Gold
Teaching
Excellence
Framework

Get the best from global opportunities

AS WELL AS EXPERIENCING THE UK, YOU CAN ALSO STUDY AND WORK IN OTHER COUNTRIES, THANKS TO OUR CONNECTIONS WITH UNIVERSITIES AND EMPLOYERS ALL OVER THE WORLD.



Why study or work in another country as part of your degree?

- Experience another new culture
- Gain broader knowledge and skills
- Boost your confidence
- Build a network of international contacts
- Develop skills employers value, such as languages, adaptability and resilience
- Stand out from other graduates with overseas experience on your CV

Where to start

Portsmouth has partnerships with universities around the world – from Europe to North America, South America, Australia, Japan and China.

Knowledge of the local language is not always required, as you will attend modules taught in English. Ask our Exchanges and Study Abroad Team about opportunities available in your subject area. Find out more at www.port.ac.uk/studyabroad.

Contact our Exchanges and Study Abroad Team

E studyabroad@port.ac.uk
T +44 (0)23 9284 3149


International Summer Schools

Study abroad doesn't have to take a term or a year – you could choose a two-week International Summer School instead. On these trips, you will explore famous landmarks and have lessons on local culture, arts and language

– perfect for boosting your CV and broadening your horizons. Previous Summer School locations include China, Malaysia and India.

Contact our Summer Schools Team

E summerschools@port.ac.uk
T +44 (0)23 9284 5110

 UoP International Summer Schools

Learn a language for free

Our Institution-wide Language Programme (IWLP) gives all students the opportunity to learn a new language alongside their degree course for free. In some cases, you will also gain credits towards your degree. Find out more at www.port.ac.uk/learn-a-language.

Dual Degrees at University of Portsmouth and Edith Cowan University, Perth, Australia

Gain two Bachelor's degrees in less time than it takes to study them separately. This will involve studying at two universities, so you will benefit from the teaching expertise, latest research and facilities of both institutions. And because each university is located in a different country, you will get to experience another culture and build a professional network.

Find out more at www.port.ac.uk/dual-degrees.

+44 (0)23 9284 3488 | global@port.ac.uk | www.port.ac.uk



Study in the UK for a term or a year

Already at university?

Our Study Abroad programme offers you the opportunity to study for a half or full academic year and gain credits which you can transfer back to your home university. You will gain experience of a different academic environment and study in classes alongside full-time British and international students.

As well as lectures, you will learn through smaller seminar and tutorial classes. This gives you an opportunity to work closely with, and get to know, other students on your course.

There are a range of subjects available to study at Portsmouth as part of our Study Abroad programme.

Did you know?
All Study Abroad students are entitled to a 20 per cent Alumni Discount for postgraduate Master's courses at the University of Portsmouth.

Study Abroad accommodation

Join us as a Study Abroad student at Portsmouth in the autumn/fall term and you can secure a guaranteed room in halls of residence. All you need to do is meet our accommodation and deposit deadlines.

If your Study Abroad programme starts in the spring term, there is still a chance we can offer you a place in halls. If we cannot, there is plenty of private rented accommodation in the city, with something suitable for all. You should have no trouble choosing a place to live in Portsmouth.

To discover more and find out how to apply, visit www.port.ac.uk/studyabroad.

Teaching dates/term

Calendar months

Autumn/Fall term

September/October
to January/February

Spring term

January/February to June

Full academic year

September/October to June

Choose to study abroad in Portsmouth and you can:

- Gain transferable credits towards your degree
- Experience UK lifestyle and education
- Develop new skills
- Grow in confidence
- Make new friends



'I chose the University of Portsmouth because of its variety of academic courses, student support and its location. The lecturers are knowledgeable and always there to explain the material further, and the University Library is amazing with access to so many books, journals and articles!'

Yekaterina Kolessina, Kazakhstan,
Study Abroad Student in the Faculty
of Humanities and Social Sciences

English language requirements and support

English language requirements

All our courses are delivered in English. To complete your course, you will need a sufficient level of English to take part in classes and discussions, and to produce assessed writing such as coursework and examinations.

You need to demonstrate your English language level by taking an approved English language test and sending us your results. Different courses need different levels of English, usually measured on the International English Language Test System (IELTS), although we also accept other tests.

You will find a full list of acceptable English language qualifications at www.port.ac.uk/englishlanguage. You can see specific course requirements on the relevant course page at www.port.ac.uk.

Foundation courses

If you are interested in a foundation or pathway course, you need a minimum of IELTS band 5.5, with no component below 5.5.

Undergraduate courses

For most of our undergraduate courses, you need a minimum of IELTS band 6.0, with no component below 5.5. Some courses, especially those with a high level of discussion and writing, require higher scores. You can see course-specific details on the individual course webpages.

Postgraduate courses

For most of our Master's degrees, you need a minimum of IELTS band 6.5–7.0, with no component below 6.0. Some courses and PhDs require higher scores. You can see course-specific details on the individual course webpages.



All pre-sessional students studying on campus can book a room in our halls of residence during their programme. We offer private rooms with shared facilities and free bedding. You will also get an equipment pack which is yours to keep. Additional fees apply.

Pre-Sessional English language courses

Whether you need to improve your English before starting your degree or just practise your language skills, apply to study one of our Pre-Sessional English (PSE) language courses either online or on campus.

PSE programmes

You will get dedicated support and advice from experienced academic staff, International Student Advisers and Learning Development Tutors. You will study for 25 hours a week, Monday to Friday, in classes of no more than 14 people. You will have the same tutor throughout your programme.

These courses are available to you if you:

- hold a conditional offer for one of our degree courses, but have not yet met the English language entry requirement
- have met the academic conditions and the English language entry requirement, but you want to do a refresher course in English

Available PSE programmes for 2022

We offer a range of programmes for students who need to improve their English to enter their degree programme. These vary from 6–20 weeks in length. There is also a 4-week programme for students who have met the English language requirements for their course but want to practise their English. All programmes are available online and on campus.

For programme fees, start dates and entry requirements visit www.port.ac.uk/pre-sessional-english.

We also offer PSE courses in China and Thailand. Please contact pse@port.ac.uk for more information.



In-Sessional English

If English is not your first language, you can take part in free In-Sessional English modules designed to fit around your degree. These modules will enable you to use academic language and communication effectively in your studies. Contact ise@port.ac.uk for more information.

CONTACT US

E pse@port.ac.uk
T +44 (0)23 9284 6976
W www.port.ac.uk/pre-sessional-english



Visas and immigration

YOU MAY NEED A STUDENT ROUTE VISA TO STUDY IN THE UK. HERE ARE SOME OF THE MOST COMMONLY ASKED QUESTIONS, ALONG WITH DIRECTIONS TO OTHER PIECES OF HELPFUL INFORMATION.

EU STUDENT VISA REQUIREMENTS

Our European collaborations bring great benefits to teaching, learning and research. We are firmly committed to maintaining a diverse and multicultural community of staff and students.

If you are an EU, EEA or Swiss citizen, you will probably need a Student Route visa to study in the UK. The exception to this would be if you hold Settled or Pre-settled status to stay in the UK under the EU Settlement Scheme or already have another type of visa that permits study in the UK.

Please check our website for the latest visa information for EU students.

I AM ALREADY IN THE UK, HOW CAN I GET A VISA?

If you are already in the UK and hold a student visa for a different institution, you will still need to apply for a new Student Route visa. You may need to return to your home country to apply for a new visa. You will not be able to register onto your course at Portsmouth until you have applied for a new visa. Find out more at www.port.ac.uk/visa-advice or by contacting the International Student Advice Team student-visa@port.ac.uk.

DO I NEED TO PAY THE IMMIGRATION HEALTH SURCHARGE (IHS)?

You will need to pay this if you are applying to study in the UK for a period of more than six months. You will also need to pay the IHS if you are already in the UK and apply to extend your stay. The charge is per student and per dependant (if you have any) per year of study, payable at the time of visa application. If the surcharge is required, but not paid, the application will be refused or treated as invalid and will be rejected. For guidance, visit www.gov.uk and search 'immigration health surcharge'.

COLLECTING YOUR BIOMETRIC RESIDENCE PERMIT (BRP)

When completing your visa application form, please state you want to collect your visa from an alternative location. You will need to enter this code: **2HE479**. This will mean your BRP card will be available to collect during registration at the University.

WHAT DO I NEED TO APPLY FOR A STUDENT ROUTE VISA?

- A Confirmation of Acceptance for Studies (CAS) from the University, plus your academic and English language evidence as confirmed on the CAS.
- Evidence that you have funds to cover tuition fees for the first year of the course and to cover the required living costs (financial requirement). You would need to show this in your or your parents' bank account for 28 consecutive days before you make your visa application.

If you are in receipt of Official Financial Sponsorship, you will need to show evidence of this in an original letter.

WHAT IS A CAS AND HOW CAN I GET ONE?

A CAS is a Confirmation of Acceptance for Studies statement. Once you meet all of your conditions (including paying your deposit) and accept your offer, we will provide you with a CAS number for your visa application. As a sponsor, we are bound by law to abide by the regulations set out under the Student Sponsor Guidance. We may have to make checks on academic progression, length of time spent studying in the UK and financial capabilities of students prior to issuing a CAS.

Deadline for issuing Confirmation of Acceptance for Studies (CAS)

The CAS issuance deadline is usually early September. If you apply close to the deadline date, the University may contact you to discuss your circumstances before making a final decision on whether it is appropriate to issue you with a CAS statement. You may be asked to provide evidence that you are able to arrange your visa application and arrive in good time.

Where can I find out more about visas and applying?

- www.port.ac.uk/visa-advice
- UK Council for International Student Affairs (UKCISA) www.ukcisa.org.uk
- UK Visas and Immigration www.gov.uk/student-visa

Who can I contact at the University about visas?

Please contact our International Student Advice Team: student-visa@port.ac.uk

Halls of residence

OUR ISLAND CITY IS A GREAT PLACE TO LIVE AND STUDY.

There is a huge range of student accommodation to choose from. Your options include:

- Self-catered or catered
- En suite or shared bathrooms
- Shared flats or corridor rooms
- Studio flats
- Accessible rooms*
- Female-only or male-only designated areas
- Designated quieter areas
- Residential wellbeing and support in halls

WE GUARANTEE ALL NEW FIRST-YEAR STUDENTS A PLACE IN HALLS, PROVIDED YOU HAVE A FIRM OFFER FROM US AND MEET ANY ACCOMMODATION DEADLINES†



YOUR BEST DAYS BEGIN IN A HALL THAT FEELS LIKE HOME

Catherine House

Type of accommodation: Self-catered

Cost per week: £151–£161

Rooms: 709 en suite, flats of 4–6 students

Special features: Heart of the city, near train station and Victoria Park

Greetham Street Hall

Type of accommodation: Self-catered

Cost per week: £165–£170

Rooms: 746 en suite, flats of 5–10 students

Special features: City centre location with great common space overlooking the city

Harry Law Hall

Type of accommodation: Self-catered

Cost per week: £142–£167

Rooms: 286 en suite, corridor style, kitchen shared with approximately 6 students

Special features: City centre location and close to Eldon Building

Rees Hall

Type of accommodation: Catered (2 meals per day)

Cost per week: £180

Rooms: 267 en suite, arranged along corridors

Special features: Close to the seafront with two communal TV lounges

Trafalgar Hall

Type of accommodation: Self-catered

Cost per week: £137–£160

Rooms: 288 en suite, flats of 6 students

Special features: Centrally located close to key University buildings, particularly close to Eldon Building

Bateson Hall

Type of accommodation: Self-catered

Cost per week: £103–£115

Rooms: 225 standard, 57 large, self-contained flats of 5 students with a shared bathroom

Special features: Single-sex flats in a city centre location

Margaret Rule Hall

Type of accommodation: Self-catered

Cost per week: £152–£166

Rooms: 342 en suite, flats of 4–7 students

Special features: Heart of the city, near train station

Burrell House

Type of accommodation: Catered (2 meals per day, taken in Rees Hall)

Cost per week: from £139

Rooms: Arranged along corridors, shared bathroom facilities

Special features: Accommodation close to the seafront and Rees Hall

Rosalind Franklin Halls

Type of accommodation: Self-catered

Cost per week: £147–£160

Rooms: 688 en suite, flats of 4–6 students

Special features: Centrally located close to key University buildings including St Michael's, King Henry and White Swan Building

Please note that all hall prices are correct at time of print. They are estimated and are subject to confirmation. All prices are rounded to the nearest pound for clarity.

The University works in partnership with The Student Housing Company (Catherine House) and Unite Students (Margaret Rule Hall, Rosalind Franklin Halls, Greetham Street Hall and Trafalgar Hall).

Visit www.port.ac.uk/accommodation for the latest updates, prices and virtual tours.



Privately rented shared houses/flats

Many students prefer to live independently in the city or surrounding area. Expect to pay around £90–£120 per week for a room in a shared flat or house, and £60–£65 for food and household bills per week on top of the rent price. Lodgings, where the landlord lives on the premises, are usually in the £90–£130 per week range. This will include all your bills and may include some meals too.

Studio flats

We offer self-contained studio flats, located in various halls of residence. Prices range from £160–£167 per week. These are prioritised for new mature and postgraduate students, but new undergraduates are welcome to apply for them too.

ResLife Team

You will also have access to the Residence Life Team who provide a varied social programme throughout the academic year and welfare support 24/7.

Student Housing Team

Our dedicated Student Housing Team are available to help throughout your time at Portsmouth. Find out about visiting halls or ask them any questions about living arrangements.

T +44 (0)23 9284 3214

E student.housing@port.ac.uk

W www.port.ac.uk/accommodation

TOP 20

MOST AFFORDABLE CITY TO LIVE IN THE UK
NATWEST STUDENT LIVING INDEX 2020



* We have some accommodation which may be suitable for students with disabilities, please contact Student Housing to discuss, adaptations may be required.

† Students starting in January/February are not guaranteed a place in halls. However, the Student Housing Team can support you in finding suitable accommodation.

Student accommodation

AS A NEW FIRST-YEAR STUDENT, WE CAN OFFER YOU A GUARANTEED PLACE IN HALLS WHEN YOU ACCEPT AN OFFER OF STUDY AND MEET ANY ACCOMMODATION DEADLINES.†

All our halls are designed to ensure that you can feel part of a community.

COMPARE THE MAIN FEATURES AND FEES FOR OUR HALLS IN 2022/23.

HALL	CATERED	SELF-CATERED	EN SUITE	WEEKLY PRICES (APPROX.)	SESSION FEE (ACADEMIC YEAR)
GUILDHALL HALLS					
Bateson	–	✓	–	£103	£4,120
Bateson (large)	–	✓	–	£115	£4,600
**Catherine House	–	✓	✓	£151–£161	£6,040–£6,440
*Greetham Street	–	✓	✓	£165–£170	£6,600–£6,800
Harry Law	–	✓	✓	£142	£5,680
Harry Law (studio)	–	✓	✓	£160–£167	£6,400–£6,680
*Rosalind Franklin (standard)	–	✓	✓	£147	£5,880
*Rosalind Franklin (studio)	–	✓	✓	£160	£6,400
*Margaret Rule (standard)	–	✓	✓	£152	£6,080
*Margaret Rule (studio)	–	✓	✓	£166	£6,640
*Trafalgar (standard)	–	✓	✓	£137	£5,480
*Trafalgar (studio)	–	✓	✓	£160	£6,400
BURRELL AND REES					
Burrell House	✓	–	–	from £139	from £5,560
Rees Hall	✓	–	✓	£180	£7,200

*Marked halls are owned by Unite Students. **Marked hall is owned by The Student Housing Company.

The University of Portsmouth takes applications for these buildings; however, accommodation agreements for these will be administered directly by Unite Students or The Student Housing Company. For further information on Unite Students or The Student Housing Company, visit www.unitestudents.com/portsmouth or www.thestudenthousingcompany.com/locations/portsmouth.

† Students starting in January/February are not guaranteed a place in halls. However, the Student Housing Team can support you in finding suitable accommodation.

Please note:

Session fees are based on a 40-week occupancy. Prices quoted are estimated for 2022/23 and subject to confirmation. Please check www.port.ac.uk for the latest information.

Accommodation

- Safe and secure housing
- Fast internet access
- Prices for all budgets

Funding and scholarships

FEES AND FUNDING

We want to ensure you have all the facts about finance now and throughout your time with us. Our Student Finance Team are here to help. For the latest information and guidance, please visit www.port.ac.uk/money.

TUITION FEES

How much you pay in tuition fees as an international student depends on whether your course is based in classrooms, laboratories or both, and whether your course includes a placement year. You can find out what you will pay on the course page on our website.

Academic Year	Tuition Fee	Placement Year Fee
2021–2022	£15,500–£17,600	£2,600–£17,600

Fees for 2022 entry may differ from those in the table. For the most up-to-date information, visit www.port.ac.uk/international-fees-and-funding.

DEPOSITS

All international students will need to pay a deposit towards their tuition fees before they can receive their Confirmation of Acceptance for Studies (CAS).

FEE PAYMENT

Fees can be paid in full at registration or in two instalments of 50 per cent, first at registration and then at the start of your second term.

Please see www.port.ac.uk/international-fees-and-funding for detailed information.

SCHOLARSHIPS

Transition Scholarship for EU Students

If you are an EU, EEA or Swiss student, our Transition Scholarship is applied to your tuition fees, so you pay the same amount as a UK student. The scholarship will be automatically applied to your fees throughout the length of your course.

Vice-Chancellor's Global Development Scholarship

Eligible students can receive the Vice-Chancellor's Global Development Scholarship. This scholarship will take the form of a fee reduction that will apply to your first year of study.

Chancellor's Global Academic Merit Scholarship

This scholarship will take the form of a £5,000 fee reduction that will apply to your first year of study. This scholarship is merit based and we only have a limited number to award.

For full terms and conditions on all our international scholarships, visit www.port.ac.uk/global-scholarship.

INFORMATION FOR EU STUDENTS

Following the UK's decision to leave the European Union, students from the EU, EEA and Swiss nationals will no longer be eligible for home fee status. Undergraduate, postgraduate and advanced learner financial support from Student Finance England will also no longer be available to EU students. For the latest information, visit www.port.ac.uk/eufees or visit www.gov.uk and search 'EU students'.

THE STUDENT FINANCE CENTRE

Our team of experienced staff can provide you with:

- information on funding, such as tuition fee loans
- advice on budgeting for your time at university and living costs in the UK

Managing your money

Once you are at the University, you may still need some help with managing your money. Look out for the Student Finance Team around campus offering advice on budgeting, money-saving tips, competitions and more.

T +44 (0)23 9284 3014
E studentfinance@port.ac.uk

COST OF LIVING IN PORTSMOUTH

If you are studying on a visa, you will need to make adequate financial provision before the start of your course to cover tuition fees, accommodation and general living costs in line with UKVI requirements. Find the latest figures at www.gov.uk/student-visa/money.

We advise you to budget around £9,500 for each academic year to cover accommodation and living costs. Other living costs depend on your lifestyle. These figures show the average weekly outgoings for our students in 2022.

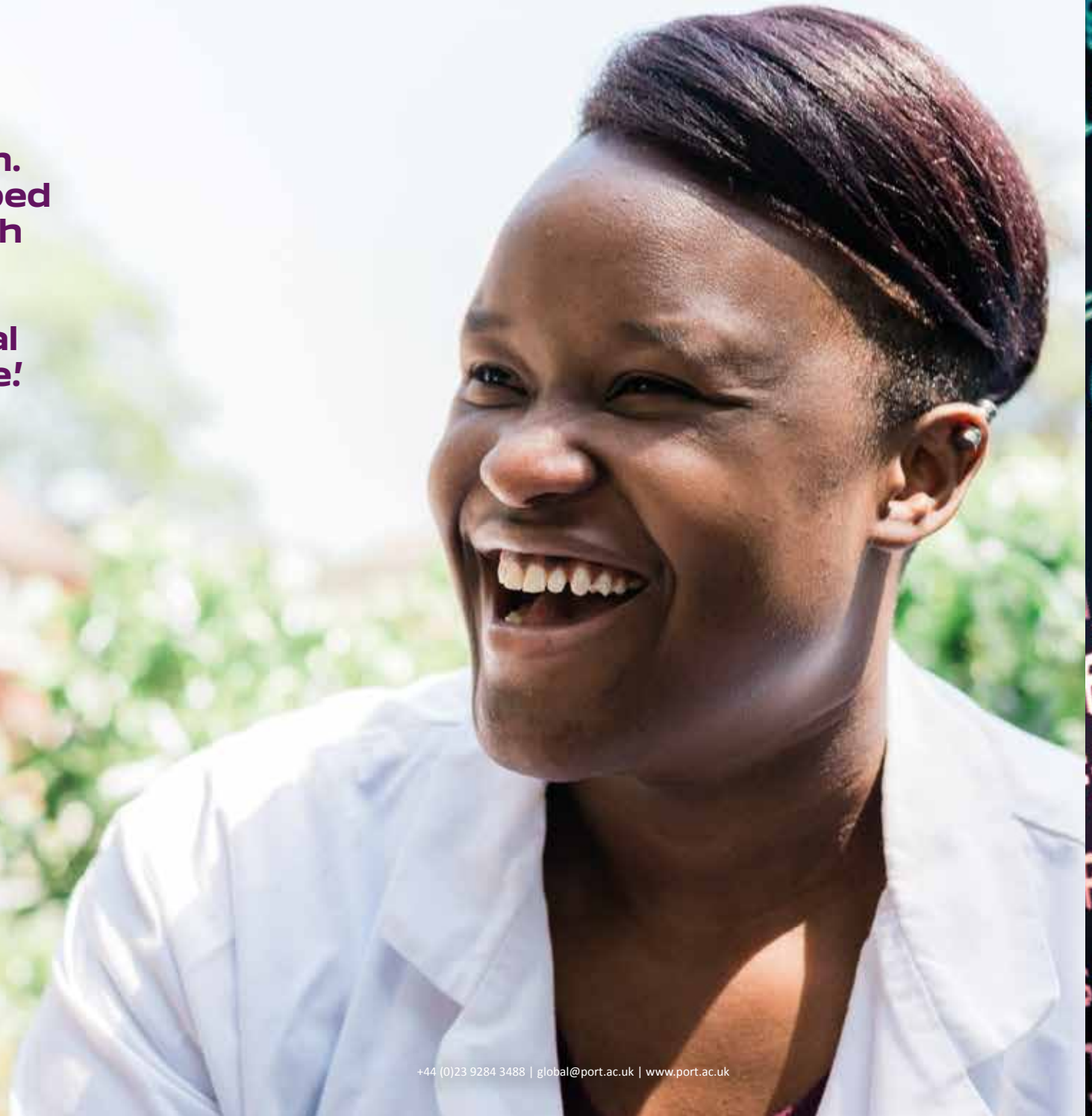


ITEM	COST OF LIVING IN UNIVERSITY HALLS OF RESIDENCE	COST OF LIVING IN PRIVATE RENTED ACCOMMODATION
Halls/rent	£103–£180	£90–£120
Bills (gas/electricity/water/internet)	Included in halls rent	£25
Food/housekeeping	£35–£40 (less if you are in catered halls)	£35–£40
Travel	£5–£10	£5–£10
Phone	£5–£10	£5–£10
Contents insurance	£2–£3	£2–£3
TV licence	£3	£3
Social costs	£30–£40	£30–£40
TOTAL PER WEEK	£183–£286	£195–£251
TOTAL PER ACADEMIC YEAR (40 WEEKS)	£7,320–£11,440	£7,800–£10,040



'I have been here three years and learnt so much. The University even helped me get an internship with Southampton Police, shadowing CSI teams, which has given me a real taste for what is to come!'

Ndanu Brown,
BSc (Hons) Criminology
and Forensic Studies



Research and learning

A BETTER WORLD BEGINS AT THE UNIVERSITY OF PORTSMOUTH



OUR RESEARCH AND INNOVATION CREATE SOLUTIONS FOR THE REAL WORLD: TACKLING PROBLEMS THAT IMPACT SOCIETY, HUMAN LIFE AND OUR PLANET.

Our research changes lives. Through world-leading research and innovation, we are sharing the knowledge to solve the hardest problems around the globe.

Our research opens minds. Researchers here love to share their understanding and inspire you. Here we present just a few examples of our research in action.

New hope in the fight against plastic waste

Imagine a world in which plastics can be made and recycled endlessly. We would be far less reliant on fossil fuels, reduce greenhouse gas emissions and stem the pollution of our environment. Nature is evolving its own solutions to deal with polluting plastics – and scientists at Portsmouth are seeking to speed up the process.

A pioneering team at our Centre for Enzyme Innovation are working with colleagues at the US National Renewable Energy Laboratory. In 2018, they made global headlines after creating a mutant

PETase enzyme that starts to break down plastic bottles in just days, compared to the hundreds of years it takes in the environment. In 2020, they combined the PETase enzyme with a second enzyme from the same plastic-eating bacteria, MHETase, to create a ‘super-enzyme’ that is six times faster at returning plastic to its original building blocks.*

Their ground-breaking work to adapt enzymes for use in industry continues, bringing us ever closer to solutions for the planet’s plastic pollution crisis.

*Knott, et al., (2020) Characterization and engineering of a two-enzyme system for plastics depolymerization, Proceedings of the National Academy of Sciences USA (<https://www.pnas.org/content/early/2020/09/23/2006753117>).



Data detective solving hidden mysteries on our plates

Our globalised world generates a bewildering amount of data. Professor Mark Xu says it is vital to manage data smarter – especially, to identify hidden threats to community health and safety.

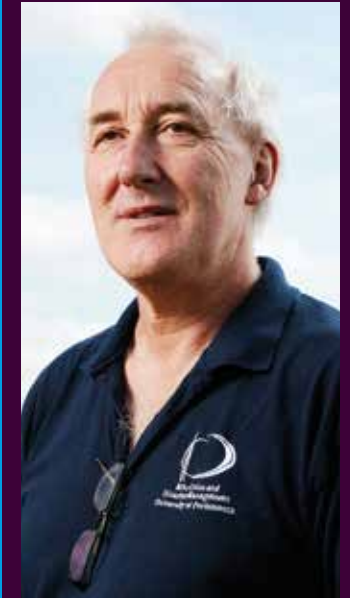
He is researching the design of a global traceability system to prevent a repeat of events like Britain’s horsemeat scandal, when the nation was shocked to discover the true ingredients of some ‘beef’ products. With a QR code, consumers would be empowered to view a product’s journey from growth, to production, to supermarket.



Revealing our place in the universe

Professor Claudia Maraston travels regularly to the depths of space and the distant past. Her stellar population models help make sense of faraway light emissions.

Studying complex galaxies seemingly formed soon after the Big Bang, she calculates the sum of light under different assumptions. These models help build a picture of our universe long ago. By understanding the physics, composition, size and age of these galaxies, we come closer to the hows and whys of life and the universe.



Eyes in the sky see paths past the storm

When tropical cyclone Harold struck Vanuatu in 2020, it flooded roads and homes, flattened buildings and grounded ships. Professor Richard Teeuw took action, drawing on his wealth of experience using satellite imagery to aid disaster management.

He examined the devastated islands using daily images from shoebox-sized ‘cubesat’ Earth observation satellites. His team mapped damage that could disrupt disaster response, from collapsed bridges to landslide-buried roads; providing vital assistance to the UN’s relief efforts.

Best begins when outstanding teaching happens every day

TEACHING COMES FIRST AT THE UNIVERSITY OF PORTSMOUTH. OUR STUDENTS ARE CENTRAL TO EVERYTHING WE DO. HERE, YOU WILL GAIN VALUABLE INSIGHT, VITAL SKILLS, UNFORGETTABLE EXPERIENCES – AND LEARN TO SHAPE THE FUTURE YOU DREAM OF.

We offer more than 140 undergraduate degrees, and 160 postgraduate and doctorate degrees and programmes across a broad range of subject areas.

We have a range of courses where you will have the opportunity to work in simulated learning environments such as a replica law court or a model pharmacy. These facilities demonstrate the strong emphasis we place on making sure you develop skills that employers value. We will equip you to thrive in today's competitive global jobs market.

Our students get opportunities to make them stand out from the crowd. You could:

- benefit from work-related learning experiences as part of your course, whatever degree you choose to study

- learn a foreign language completely free of charge
- get involved in local, national and international volunteering opportunities
- gain knowledge and experience through fieldtrips and visits that are part of a number of courses
- develop your entrepreneurial skills via modules within your course
- benefit from exchange opportunities with other universities and businesses around the world
- design and build a fully operational electric racing car as part of Formula Student
- take part in student competitions including GameJam and the Enterprise Showcase



'I love the practical side of my course where in almost each unit I do coursework, to develop more in-depth knowledge which can't be obtained by lectures only!'

Kaouthar Stambouli,
MEng Electrical
Engineering



'I like the way the course is being taught and the structure. It connects theory and practice, so you have not only theoretical knowledge, but you are also able to apply the knowledge within the real business environment!'

Dominik Turan,
BA (Hons) Digital Marketing





Best begins with a campus built for the future

WE HAVE COMMITTED £400 MILLION TO THE NEXT PHASE OF OUR CAMPUS EVOLUTION, INCLUDING SOME AMAZING FACILITIES

Here are some of the facilities already up and running that you can access as a student.

Learning facilities

Our students have access to all the following, and more:

- Wi-Fi across campus
- free IT support
- laptops on 24-hour loan
- computer suites with specialised software and equipment
- free Microsoft Office download
- open access areas, printing and scanning facilities, and group working areas

The University Library

Spacious, comfortable, well-equipped and open 24 hours a day during term time, with:

- meeting pods
- bookable group study rooms with presentation facilities
- soft seating areas
- a café
- over 390,000 printed books and DVDs, more than 765,000 ebooks, and nearly 59,000 journals
- friendly librarians you can chat to in person, online or by phone 24 hours a day
- dedicated faculty librarians offering in-depth subject support and training

Future Technology Centre (FTC)

Work on real-life projects with companies that want to access the FTC's advanced science, technology, engineering and mathematics (STEM) facilities and specialist equipment.

Professional Interpreter Training Suite

Featuring the latest technology for training in simultaneous and consecutive interpreting, as used by the European Parliament.

Forensic Innovation Centre (FIC)

Our partnership with Hampshire Constabulary sees, for the first time in the UK, operational police staff located on a university campus. The Constabulary's scientific support staff work closely with academics and students to advance forensic education, research and innovation – which has a direct impact on real, professional forensic practice. Work placement opportunities give students the chance to boost their employability.

Bloomberg Suite

Access the same data, analytics and software used by over a quarter of a million finance professionals globally. Students monitor and analyse real-time financial market data movements, and trade virtually in the Portsmouth Business School Bloomberg Suite.

Replica courtroom

We are one of the few UK universities with a replica courtroom – a realistic copy of a UK Crown Court, where students can gain the practical experience they need to start their legal career, through mootings and simulated court cases.

Centre for Simulation in Health and Care

A simulated GP surgery, a mock dispensary, clinical skills simulation suite, one-bedroom flat and two acute hospital training wards.

Dental Pre-Clinical Skills Laboratory

Fully equipped laboratory for pre-clinical skill development for the Dental Nurse, Dental Hygienist and Dental Therapist courses. Skills developed in this space include periodontal, restorative and paediatric dentistry.

Motion Capture technology

Students can work with commercial clients and studios who want to use our facilities, including the Vicon optical system and Motion Capture studio.

Psychology students explore human movement, looking at how body language influences our appraisal of others and affects interpersonal interactions.

CCIXR

The Centre for Creative and Immersive XR (eXtended Reality), in partnership with Solent Local Enterprise Partnership and the UK Government, is the UK's first integrated facility to support innovation in the creative and digital technologies of virtual, augmented and extended realities, motion capture, TV studios, virtual production facilities and photogrammetry.

Business facilities

The Business Simulation Suite is a flexible technologically enhanced learning facility. The room contains sliding partitions that can quickly transform the suite into a mock boardroom, a classroom, or a room for practising speech and presentation skills, and includes a podium and wall-mounted monitors for recording and playback.

We also have a superb provision of the latest equipment and tools that creative students can loan to get the best from their studies.

Play. Train. Compete.

REACH YOUR PERSONAL BEST WITH SPORT AT PORTSMOUTH

Play

Play in the gym with our fantastic Technogym kit. Play in our studios with a range of fitness classes. Play in our sports clubs for fun and make friends. Play with your future by volunteering in a range of areas.

Train

Train to get stronger, fitter, healthier, more focused. Train to earn paid opportunities through your volunteering and coaching. Train to get into the first team. Train to run a sports club. Or simply train for fun.

Compete

Compete against your own personal best in the gym. Compete to earn that spot in the team. Compete against other universities. Compete to achieve great things in study and sport. Compete on the world stage.



Health and wellbeing facilities

- Brand-new sports centre, which is among the UK's most sustainable
- 175-station gym with cardiovascular, resistance and free-weights
- Fitness team delivering high-quality classes for all levels of fitness
- Play, train or compete with friends in our indoor sports hall
- Outdoor football and rugby pitches, tennis and netball courts, AstroTurf and 3G pitches (all at our Langstone Sports Site, home to many clubs)
- Affordable memberships

Sports clubs

Play, train and compete with 33 sports clubs through the University's Sport and Recreation department.

Here is a sample of what's on offer:

- American Football • Archery
- Athletics • Badminton
- Basketball • Climbing and Mountaineering • Cricket • Cycling
- Dodgeball • Fencing • Football (Men's and Women's) • Futsal
- Golf • Gym and Trampoline
- Handball • Hockey • Lacrosse
- Netball • Rowing • Rugby (Men's and Women's) • Sailing • Ski and Snow • Softball • Squash
- Swimming • Table Tennis
- Taekwondo and Karate • Tennis
- Ultimate Frisbee • Volleyball
- Water Polo

Teams take part in leagues and competitions against other universities, including in British Universities and Colleges Sports (BUCS) competitions.

Alternatively, campus sport leagues offer a chance to compete socially against student and staff teams – from five-a-side football, to badminton, tennis and more.

Skills development

Sports coaching, officiating and volunteering can be great fun. They can also enhance your employability. We offer a wide range of opportunities for you to develop new skills and gain extra qualifications through supported community placements at schools, events and clubs.

Sport scholarships

In line with the University's focus on unlocking potential and enabling students to excel, we are committed to helping you reach the top of your game. We offer dedicated support and top-quality coaching. The University has a history of sporting success, with Olympians, Paralympians and other international competitors having studied here. Our Sports Scholarship Scheme can assist high-level athletes to achieve their goals during their time with us. Find out more about how and when to apply on our website.

Want to play, train or compete at Portsmouth?

Visit www.sport.port.ac.uk.

Portsmouth is a great place for health, fitness and sport. Whether you're a top athlete or just want to keep fit, we have facilities and support to help you achieve your goals. The University offers all kinds of ways for you to stay physically active, try new things, and make friends while doing it.



Lean, green and fit for the future

INTRODUCING RAVELIN
SPORTS CENTRE



**At the University of Portsmouth,
you can play, train and compete
in one of the UK's most
sustainable sports centres**



OUR BRAND-NEW £57 MILLION SPORTS CENTRE OPENS IN 2021. IT IS HIGHLY ADVANCED AND AMONG THE MOST SUSTAINABLE SPORTS FACILITIES IN THE NATION. WITH AFFORDABLE MEMBERSHIPS FOR STUDENTS – THERE IS A LOT TO LOOK FORWARD TO.

Superb facilities

- 25m swimming pool with 8 lanes
- 175-station fitness suite
- 8-court sports hall
- 3 fitness studios
- climbing and bouldering walls
- ski simulator
- squash courts
- café
- community orchard

Step inside

Rising through the centre of the building, from basement to roof, scaling the impressive climbing wall will be a challenge like no other. With large windows to the historic parkland outside, taking a dip in the indoor pool will feel like you are swimming in the open air.

Step it up

Thanks to the latest fitness technology, a workout in the gym, virtual skiing or a class with friends will keep your health goals on track. Our 175-station gym features equipment by Technogym, the leaders in innovation, technology and digital connected fitness. A wide range of cardiovascular, resistance and free-weights will help you customise your workouts.

The friendly fitness team deliver a wide range of high-quality classes that are recognised worldwide. A range of LesMills classes are perfect for any level of fitness. You can also play, train or compete in a variety of sports in our indoor sports hall.

A step forward for sustainability

- Designed to be one of the UK's most sustainable sports centres, Ravelin Sports Centre aims to be net zero carbon ready
- Rated 'Outstanding' by BREEM UK – the world's leading sustainability assessment for buildings
- The building utilises renewable sources of energy from roof solar panels and internal heat recovery systems
- Pool water is reused for toilet flushing and a new community orchard is part of a sustainable drainage system
- Rooftop beehives and a wildflower amphitheatre events space will develop biodiversity in the surrounding areas

Pathway programmes to the University of Portsmouth

Pathways to your degree

If you are an international student who does not qualify for direct entry, you may be able to begin your pathway at International College Portsmouth (ICP) and graduate with a degree from the University. ICP has helped over 4,000 students from more than 100 nationalities progress to their chosen University course.

ICP is an embedded college to the University and is centrally located on campus. You will have the benefit of learning in smaller classes with additional teaching sessions by highly qualified lecturers and tutors, along with full access to student facilities at the University. Successful completion of an ICP programme gives you a guaranteed progression to the University.

We offer undergraduate foundation and international first-year courses, and pre-Master's for those looking for postgraduate studies. ICP offers a flexible entry system of three intakes each year (January, June and September) which allows you to begin your studies at a time that best suits you. If you are interested in receiving an offer, you will need to submit an online application on the ICP website.



Undergraduate pathways

- Accounting and Finance
- Architecture, Design and Fashion
- Business and Management
- Computing
- Media and Games Technologies
- Engineering
- Law, Politics and International Relations
- Mathematics
- Property and Surveying
- Science

Postgraduate pathways

- Business and Management
- Finance
- Logistics and Supply Chain Management
- Education
- International Relations and Criminal Justice
- Science and Engineering

Duration

Undergraduate programmes

Foundation:

One or two semesters

International first year:

Two semesters

Postgraduate programmes

Pre-Master's:

One semester

Fees*

Undergraduate:

One semester: £8,200

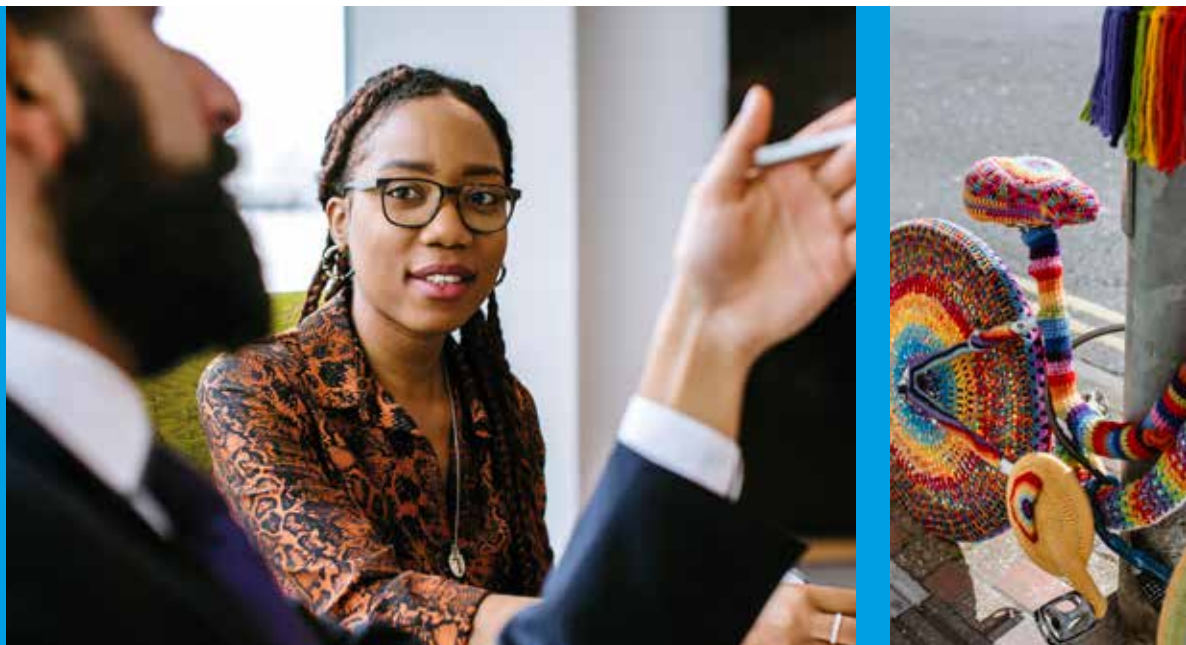
Two semesters: £13,900–£14,900

Postgraduate:

£7,900–£8,100

Find out more

T +44 (0)23 9284 8540
E admissions@icp.port.ac.uk
W www.port.ac.uk/icp



* Fees shown are for 2021 entry. Fees for 2022 entry may differ. For the most up-to-date information, visit www.icp.navitas.com





**'I love Portsmouth
and my advice to
new students is be
ready to explore and
experience life!'**

Ramkumar Ravindran,
BSc (Hons) Psychology

 @UoPGlobal

 @UoPGlobal

 @UoPGlobal

 UniversityofPortsmouth

www.port.ac.uk

Browse our courses by category

VISIT WWW.PORT.AC.UK/COURSES FOR SPECIFIC ENTRY REQUIREMENTS – YOU WILL ALSO FIND DETAILS ABOUT OUR DISTANCE LEARNING AND STUDY ONLINE COURSES.

ACCOUNTING, ECONOMICS AND FINANCE

UNDERGRADUATE

Course title	Duration
BA (Hons) Accountancy and Financial Management (top-up)	2 years full time (top-up)
BA (Hons) Accounting with Finance	3 years full time, 4 years sandwich with work placement
BSc (Econ) (Hons) Economics	3 years full time, 4 years sandwich with work placement
BA (Hons) Economics and Management	3 years full time, 4 years sandwich with work placement
BSc (Econ) (Hons) Economics, Finance and Banking	3 years full time, 4 years sandwich with work placement
BA (Hons) Finance with Business Communication (top-up)	1 year full time (top-up), 2 years full time (top-up)
BA (Hons) Financial Management	3 years full time, 4 years sandwich with work placement
BSc (Hons) Mathematics for Finance and Management	3 years full time, 4 years sandwich with work placement

POSTGRADUATE

Course title	Duration
MSc Accounting and Data Analytics	1 year full time, 30 months part time
MSc Accounting and Finance	1 year full time, 30 months part time
MPhil Accounting and Financial Management	2 years full time, 4 years part time J
PhD Accounting and Financial Management	3 years full time, 6 years part time J
MPhil Economics and Finance	2 years full time, 4 years part time J
PhD Economics and Finance	3 years full time, 6 years part time J
MSc Economics, Finance and Banking	1 year full time, 2 years part time
MSc Finance	1 year full time
MSc Forensic Accounting	1 year full time, 30 months part time
MSc International Finance and Banking	1 year full time

ARCHITECTURE AND SURVEYING

UNDERGRADUATE

Course title	Duration
BA (Hons) Architecture	3 years full time, 4 years sandwich with work placement
BSc (Hons) Building Surveying	3 years full time, 4 years sandwich with work placement
BA (Hons) Interior Architecture and Design	3 years full time, 4 years sandwich with work placement
BSc (Hons) Property Development	3 years full time, 4 years sandwich with work placement
BSc (Hons) Quantity Surveying	3 years full time, 4 years sandwich with work placement

POSTGRADUATE

Course title	Duration
MArch Architecture	2 years full time, 4 years part time
MPhil Architecture	2 years full time, 4 years part time J
PhD Architecture	3 years full time, 6 years part time J
Final Examination in Professional Practice (Part 3) Architecture	1 year part time
International Professional Practice (Part 3) Architecture	1 year part time
MSc Building Information Management	1 year full time, 2 years part time
MA Conservation Architecture	1 year full time, 2 years part time
MRes Creative Industries	1 year full time, 2 years part time J
MA Interior Architecture and Design	1 year full time, 2 years part time
MSc Quantity Surveying	1 year full time, 2 years part time
MA Sustainable Cities	1 year full time, 2 years part time

MORE INFORMATION

The majority of courses start in September/October, all courses with additional start dates are highlighted in the key.

English language requirements – pages 22–23

Fees and funding – pages 30–32

Entry requirements – pages 78–79

For full course details, including tuition fees and start dates, please visit the course pages on our website.

Key to course listings

- Faculty of Business and Law
- Faculty of Creative and Cultural Industries
- Faculty of Humanities and Social Sciences
- Faculty of Science and Health
- Faculty of Technology

Additional start dates

J January/February

BIOLOGICAL SCIENCES

UNDERGRADUATE

Course title	Duration
BSc (Hons) Biochemistry	3 years full time, 4 years sandwich with work placement
BSc (Hons) Biology	3 years full time, 4 years sandwich with work placement
BSc (Hons) Biomedical Science	3 years full time, 4 years sandwich with work placement
BSc (Hons) Marine Biology	3 years full time, 4 years sandwich with work placement

POSTGRADUATE

Course title	Duration
MSc Applied Aquatic Biology	1 year full time, 2 years part time
MPhil Biological Sciences	2 years full time, 4 years part time J
PhD Biological Sciences	3 years full time, 6 years part time J
MSc Biotechnology	1 year full time, 2 years part time J
MSc Biotechnology (with Professional Experience)	18 months full time, 30 months part time ... J
MSc Medical Biotechnology	1 year full time, 2 years part time J
MSc Medical Biotechnology (with Professional Experience)	18 months full time, 30 months part time ... J
MRes Science and Health	1 year full time, 2 years part time J

BUSINESS, MANAGEMENT AND MARKETING

UNDERGRADUATE

Course title	Duration
BA (Hons) Business and Human Resource Management	3 years full time, 4 years sandwich with work placement
BA (Hons) Business and Management	3 years full time, 4 years sandwich with work placement
BSc (Hons) Business and Supply Chain Management	3 years full time, 4 years sandwich with work placement
BA (Hons) Business Management and Entrepreneurship	3 years full time, 4 years sandwich with work placement

BA (Hons) Business with Business Communication (top-up)	1 year full time (top-up), 2 years full time (top-up)
BA (Hons) Digital Marketing	3 years full time, 4 years sandwich with work placement
BA (Hons) International Business	3 years full time, 4 years sandwich with work placement
BA (Hons) International Business Communication	3 years full time J
BA (Hons) International Trade and Business Communication	3 years full time J
BA (Hons) International Trade, Logistics and Business Communication (top-up)	1 year full time (top-up), 2 years full time (top-up) J
LLB (Hons) Law with Business	3 years full time, 4 years sandwich with work placement
BA (Hons) Leadership, Business and Management (top-up)	18 months part time (top-up)
BA (Hons) Marketing	3 years full time, 4 years sandwich with work placement
BSc (Hons) Sport Management (top-up)	1 year full time (top-up) ...

POSTGRADUATE

Course title	Duration
DBA Professional Doctorate in Business Administration	4–7 years part time
MSc Business and Management	1 year full time, 3 years part time
MA Business Communication for International Leadership	1 year full time J
MSc Digital Business Management	1 year full time, 2 years part time J
MA Digital Marketing	1 year full time, 2 years part time
MA Fashion Marketing	1 year full time, 2 years part time
MA Fashion Marketing (with Professional Experience)	18 months full time ...
MSc Human Resource Development (top-up)	6 months full time (top-up), 1 year part time (top-up) JU

MORE INFORMATION

The majority of courses start in September/October, all courses with additional start dates are highlighted in the key.

English language requirements – pages 22–23

Fees and funding – pages 30–32

Entry requirements – pages 78–79

For full course details, including tuition fees and start dates, please visit the course pages on our website.

Key to course listings

- Faculty of Business and Law
- Faculty of Creative and Cultural Industries
- Faculty of Humanities and Social Sciences
- Faculty of Science and Health
- Faculty of Technology

Additional start dates

J January/February **JU** June start only

... Course subject to approval

PgDip Human Resource Development and Training Management	2–4 years part time	J
PgDip Human Resource Management	2 years part time	
MSc Human Resource Management (top-up)	6 months full time (top-up), 1 year part time (top-up)	JU
MSc Human Resource Management	1 year full time	
MSc Innovation Management and Entrepreneurship	1 year full time, 2 years part time	
MSc International Business and Management	14 months full time	J
MSc International Human Resource Management	1 year full time	
MA International Marketing	1 year full time, 2 years part time	
MSc Leadership and Management (top-up)	1 year part time (top-up)	J
MSc Logistics and Supply Chain Management	1 year full time, 17 months full time	J
MPhil Marketing	2 years full time, 4 years part time	J
PhD Marketing	3 years full time, 6 years part time	J
MA Marketing Analytics	1 year full time, 2 years part time	
MSc Occupational Health and Safety Management	3 years part time	J
MSc Occupational Health, Safety and Environmental Management	3 years part time	J
MPhil Operations and Systems Management	2 years full time, 4 years part time	J
PhD Operations and Systems Management	3 years full time, 6 years part time	J
MPhil Organisation Studies and Human Resource Management	2 years full time, 4 years part time	J
PhD Organisation Studies and Human Resource Management	3 years full time, 6 years part time	J
MSc Project Management	1 year full time, 15 months full time	J
MSc Risk, Crisis and Resilience Management	1 year full time, 2 years part time	
MSc Sport Management	1 year full time with mandatory work-based learning element, 2 years part time with mandatory work-based learning element	J
MBA Strategic Leadership	2 years part time	
MPhil Strategy, Enterprise and Innovation	2 years full time, 4 years part time	J
PhD Strategy, Enterprise and Innovation	3 years full time, 6 years part time	J

CHILDHOOD, YOUTH STUDIES AND EDUCATION

UNDERGRADUATE

Course title	Duration
BA (Hons) Childhood and Youth Studies	3 years full time, 4 years sandwich with work placement
BA (Hons) Childhood and Youth Studies with Criminology	3 years full time, 4 years sandwich with work placement
BA (Hons) Childhood and Youth Studies with Psychology	3 years full time, 4 years sandwich with work placement
BA (Hons) Early Childhood Studies	3 years full time, 4 years sandwich with work placement
GradCert Early Years Initial Teacher Training	1 year part time
BA (Hons) Education Studies (top-up)	1 year full time (top-up), 15 months part time (top-up)
CertEd Further Education and Training	1 year full time, 2 years part time

POSTGRADUATE

Course title	Duration	
EdD Professional Doctorate in Education	4–6 years part time	
MPhil Education and Sociology	2 years full time, 4 years part time	J
PhD Education and Sociology	3 years full time, 6 years part time	J
MA Education Studies	1 year full time, 2 years part time	
PgCert Educational Leadership and Management	6 months full time, 1 year part time	
PgDip Educational Leadership and Management	1 year full time, 2 years part time	
MSc Educational Leadership and Management	1 year full time, 2 years part time	
PGCE Further Education and Training	1 year full time, 2 years part time	
MRes Humanities and Social Sciences	1 year full time, 2 years part time	

MORE INFORMATION

The majority of courses start in September/October, all courses with additional start dates are highlighted in the key.

English language requirements – pages 22–23

Fees and funding – pages 30–32

Entry requirements – pages 78–79

For full course details, including tuition fees and start dates, please visit the course pages on our website.

Key to course listings

- Faculty of Business and Law
- Faculty of Creative and Cultural Industries
- Faculty of Humanities and Social Sciences
- Faculty of Science and Health
- Faculty of Technology

Additional start dates

J January/February JU June start only

COMPUTER GAMES, ANIMATION AND DIGITAL TECHNOLOGIES

UNDERGRADUATE

Course title	Duration
BA (Hons) Animation	3 years full time, 4 years sandwich with work placement
BSc (Hons) Computer Animation and Visual Effects	3 years full time, 4 years sandwich with work placement
BSc (Hons) Computer Games Enterprise	3 years full time, 4 years sandwich with work placement, 6 years part time
BSc (Hons) Computer Games Technology	3 years full time, 4 years sandwich with work placement
BA (Hons) Creative Computing with Foundation Year	4 years full time, 5 years sandwich with work placement
BSc (Hons) Creative Computing with Foundation Year	4 years full time, 5 years sandwich with work placement
BSc (Hons) Creative Media Technologies	3 years full time, 4 years sandwich with work placement
BA (Hons) Creative Music Technology (top-up)	1 year full time (top-up)
BSc (Hons) Virtual and Augmented Reality	3 years full time, 4 years sandwich with work placement

POSTGRADUATE

Course title	Duration
MRes Creative Industries	1 year full time, 2 years part time J
MSc Creative Technologies	1 year full time, 2 years part time
MPhil Creative Technologies	2 years full time, 4 years part time J
PhD Creative Technologies	3 years full time, 6 years part time J

MORE INFORMATION

The majority of courses start in September/October, all courses with additional start dates are highlighted in the key.

English language requirements – pages 22–23

Fees and funding – pages 30–32

Entry requirements – pages 78–79

For full course details, including tuition fees and start dates, please visit the course pages on our website.

Key to course listings

- Faculty of Business and Law
- Faculty of Creative and Cultural Industries
- Faculty of Humanities and Social Sciences
- Faculty of Science and Health
- Faculty of Technology

Additional start dates

J January/February

COMPUTING

UNDERGRADUATE

Course title	Duration
BSc (Hons) Business Information Systems	3 years full time, 4 years sandwich with work placement
BSc (Hons) Computer Networks	3 years full time, 4 years sandwich with work placement
BSc (Hons) Computer Science	3 years full time, 4 years sandwich with work placement
MEng Computer Science	4 years full time, 5 years sandwich with work placement
BSc (Hons) Computing	3 years full time, 4 years sandwich with work placement
BSc (Hons) Cyber Security and Forensic Computing	3 years full time, 4 years sandwich with work placement
BSc (Hons) Data Science and Analytics	3 years full time, 4 years sandwich with work placement
BSc (Hons) Software Engineering	3 years full time, 4 years sandwich with work placement

POSTGRADUATE

Course title	Duration
MSc Computer Network Administration and Management	1 year full time, 3 years part time, 16 months full time J
MPhil Computing	2 years full time, 4 years part time J
PhD Computing	3 years full time, 6 years part time J
MSc Cyber Security and Forensic Information Technology	1 year full time, 3 years part time J
MSc Data Analytics	1 year full time, 2 years part time
MSc Data Analytics (with Professional Experience)	18 months full time
MSc Information Systems	1 year full time, 3 years part time, 16 months full time J

CRIMINOLOGY, CYBERCRIME AND FORENSICS

UNDERGRADUATE

Course title	Duration
BA (Hons) Childhood and Youth Studies with Criminology	3 years full time, 4 years sandwich with work placement
BSc (Hons) Counterterrorism, Intelligence and Cybercrime (Dual Degree)	3 years and 6 months full time with a year at Edith Cowan University
BSc (Hons) Criminology and Criminal Justice	3 years full time, 4 years sandwich with work placement
BSc (Hons) Criminology and Cybercrime	3 years full time, 4 years sandwich with work placement
BSc (Hons) Criminology and Forensic Studies	3 years full time, 4 years sandwich with work placement
BSc (Hons) Criminology with Environmental Justice	3 years full time, 4 years sandwich with work placement
BSc (Hons) Criminology with Psychology	3 years full time, 4 years sandwich with work placement
BSc (Hons) Cyber Security and Forensic Computing	3 years full time, 4 years sandwich with work placement
BSc (Hons) Forensic Psychology	3 years full time, 4 years sandwich with work placement
LLB (Hons) Law with Criminology	3 years full time, 4 years sandwich with work placement
BSc (Hons) Professional Policing	3 years full time, 4 years sandwich with work placement
BSc (Hons) Sociology with Criminology	3 years full time, 4 years sandwich with work placement

POSTGRADUATE

Course title	Duration
MSc Criminal Justice	1 year full time, 2 years part time
DCrimJ Professional Doctorate in Criminal Justice	4–7 years part time
MPhil Criminal Justice Studies	2 years full time, 4 years part time
PhD Criminal Justice Studies	3 years full time, 6 years part time
MSc Cyber Security and Forensic Information Technology	1 year full time, 3 years part time
MSc Forensic Psychology	1 year full time, 2 years part time
MRes Humanities and Social Sciences	1 year full time, 2 years part time
DSyRM Professional Doctorate in Security Risk Management	4–7 years part time

DRAMA, MUSIC AND PERFORMING ARTS

UNDERGRADUATE

Course title	Duration
BA (Hons) Drama and Performance	3 years full time, 4 years sandwich with work placement
BSc (Hons) Music Technology	3 years full time, 4 years sandwich with work placement
BA (Hons) Musical Theatre	3 years full time, 4 years sandwich with work placement

POSTGRADUATE

Course title	Duration
MPhil Art, Design and Performance	2 years full time, 4 years part time
PhD Art, Design and Performance	3 years full time, 6 years part time
MRes Creative Industries	1 year full time, 2 years part time
MA Theatre: Socially Engaged Practice	1 year full time, 2 years part time

EARTH SCIENCES

UNDERGRADUATE

Course title	Duration
BEng (Hons) Engineering Geology and Geotechnics	3 years full time, 4 years sandwich with work placement
BSc (Hons) Geology	3 years full time, 4 years sandwich with work placement
BSc (Hons) Palaeontology	3 years full time, 4 years sandwich with work placement

MORE INFORMATION

The majority of courses start in September/October, all courses with additional start dates are highlighted in the key.

English language requirements – pages 22–23

Fees and funding – pages 30–32

Entry requirements – pages 78–79

For full course details, including tuition fees and start dates, please visit the course pages on our website.

Key to course listings

- Faculty of Business and Law
- Faculty of Creative and Cultural Industries
- Faculty of Humanities and Social Sciences
- Faculty of Science and Health
- Faculty of Technology

Additional start dates

J January/February

■ Course subject to approval

POSTGRADUATE

Course title	Duration	
MSc Engineering Geology	1 year full time, 2 years part time	
MPhil Environment, Geography and Geosciences	2 years full time, 4 years part time	J
PhD Environment, Geography and Geosciences	3 years full time, 6 years part time	J
MSc Environmental Geology and Contamination	1 year full time, 2 years part time	
MSc Geological and Environmental Hazards	1 year full time, 2 years part time	
MRes Science and Health	1 year full time, 2 years part time	J

ENGINEERING

UNDERGRADUATE

Course title	Duration	
BEng (Hons) Civil Engineering	3 years full time, 4 years sandwich with work placement	
MEng Civil Engineering	4 years full time, 5 years sandwich with work placement	
BEng (Hons) Construction Engineering Management	3 years full time, 4 years sandwich with work placement	
BEng (Hons) Electronic Engineering	3 years full time, 4 years sandwich with work placement	
MEng Electronic Engineering	4 years full time, 5 years sandwich with work placement	
BEng (Hons) Engineering and Technology with Foundation Year	4 years full time, 5 years sandwich with work placement	
BEng (Hons) Engineering Geology and Geotechnics	3 years full time, 4 years sandwich with work placement	
BEng (Hons) Innovation Engineering	3 years full time, 4 years sandwich with work placement	
MEng Innovation Engineering	4 years full time, 5 years sandwich with work placement	
BEng (Hons) Mechanical and Aeronautical Engineering	3 years full time, 4 years sandwich with work placement	
BEng (Hons) Mechanical and Manufacturing Engineering	3 years full time, 4 years sandwich with work placement	
BEng (Hons) Mechanical Engineering	3 years full time, 4 years sandwich with work placement	
MEng Mechanical Engineering	4 years full time, 5 years sandwich with work placement	
BSc (Hons) Product Design and Innovation	3 years full time, 4 years sandwich with work placement	

BEng (Hons) Renewable Energy Engineering	3 years full time, 4 years sandwich with work placement
MEng Renewable Energy Engineering	4 years full time, 5 years sandwich with work placement

POSTGRADUATE

Course title	Duration	
MSc Advanced Manufacturing Technology	1 year full time, 3 years part time, 16 months full time	J
MSc Civil Engineering	1 year full time, 2 years part time	
MPhil Civil Engineering and Surveying	2 years full time, 4 years part time	J
PhD Civil Engineering and Surveying	3 years full time, 6 years part time	J
MSc Construction Project Management	1 year full time, 2 years part time	
MSc Electronic and Electrical Engineering	1 year full time, 3 years part time, 16 months full time	J
MSc Electronic and Electrical Engineering (with Professional Experience)	18 months full time	
MPhil Energy and Electronic Engineering	2 years full time, 4 years part time	J
PhD Energy and Electronic Engineering	3 years full time, 6 years part time	J
MSc Energy and Power Systems Management	1 year full time, 3 years part time, 16 months full time	J
MSc Engineering Geology	1 year full time, 2 years part time	
MSc Engineering Management	1 year full time, 3 years part time, 16 months full time	J
MPhil Mechanical and Design Engineering	2 years full time, 4 years part time	J
PhD Mechanical and Design Engineering	3 years full time, 6 years part time	J
MSc Mechanical Engineering	1 year full time, 3 years part time, 16 months full time	J
MSc Petroleum and Gas Engineering	1 year full time, 3 years part time	

MORE INFORMATION

The majority of courses start in September/October, all courses with additional start dates are highlighted in the key.

English language requirements – pages 22–23

Fees and funding – pages 30–32

Entry requirements – pages 78–79

For full course details, including tuition fees and start dates, please visit the course pages on our website.

Key to course listings

- Faculty of Business and Law
- Faculty of Creative and Cultural Industries
- Faculty of Humanities and Social Sciences
- Faculty of Science and Health
- Faculty of Technology

Additional start dates

J January/February

ENGLISH AND CREATIVE WRITING

UNDERGRADUATE

Course title	Duration
BA (Hons) Creative Writing	3 years full time, 4 years sandwich with work placement
BA (Hons) English and Creative Writing	3 years full time, 4 years sandwich with work placement
BA (Hons) English Language and Linguistics	3 years full time, 4 years sandwich with work placement
BA (Hons) English Literature	3 years full time, 4 years sandwich with work placement
BA (Hons) Film Studies and Creative Writing	3 years full time, 4 years sandwich with work placement
BA (Hons) Journalism with Creative Writing	3 years full time, 4 years sandwich with work placement

POSTGRADUATE

Course title	Duration
MPhil Area Studies, History, Politics and Literature	2 years full time, 4 years part time J
PhD Area Studies, History, Politics and Literature	3 years full time, 6 years part time J
MA Creative Writing	1 year full time, 2 years part time
MRes Humanities and Social Sciences	1 year full time, 2 years part time

MORE INFORMATION

The majority of courses start in September/October, all courses with additional start dates are highlighted in the key.

English language requirements – pages 22–23

Fees and funding – pages 30–32

Entry requirements – pages 78–79

For full course details, including tuition fees and start dates, please visit the course pages on our website.

Key to course listings

- Faculty of Business and Law
- Faculty of Creative and Cultural Industries
- Faculty of Humanities and Social Sciences
- Faculty of Science and Health
- Faculty of Technology

Additional start dates

J January/February

... Course subject to approval

FASHION, PHOTOGRAPHY, GRAPHIC ARTS AND DESIGN

UNDERGRADUATE

Course title	Duration
BA (Hons) Fashion and Textile Design	3 years full time, 4 years sandwich with work placement
BA (Hons) Graphic Design	3 years full time, 4 years sandwich with work placement
BA (Hons) Illustration	3 years full time, 4 years sandwich with work placement
BA (Hons) Photography	3 years full time, 4 years sandwich with work placement

POSTGRADUATE

Course title	Duration
MPhil Art, Design and Performance	2 years full time, 4 years part time J
PhD Art, Design and Performance	3 years full time, 6 years part time J
MRes Creative Industries	1 year full time, 2 years part time J
MA Fashion and Textiles	1 year full time, 2 years part time
MA Fashion Marketing	1 year full time, 2 years part time
MA Fashion Marketing (with Professional Experience)	18 months full time ...
MA Graphic Design	1 year full time, 2 years part time
MA Illustration	1 year full time, 2 years part time
MA Photography	1 year full time, 2 years part time

FILM AND TELEVISION

UNDERGRADUATE

Course title	Duration
BA (Hons) Film Production	3 years full time, 4 years sandwich with work placement
BA (Hons) Film Studies	3 years full time, 4 years sandwich with work placement
BA (Hons) Film Studies and Creative Writing	3 years full time, 4 years sandwich with work placement
BA (Hons) Global Communication and Media (Dual Degree)	3 years and 6 months full time with a year at Edith Cowan University ...
BSc (Hons) Television and Broadcasting	3 years full time, 4 years sandwich with work placement

POSTGRADUATE

Course title	Duration	
MRes Creative Industries	1 year full time, 2 years part time	J
MSc Film and Television	1 year full time, 2 years part time	
MPhil Film, Media and Communication	2 years full time, 4 years part time	
PhD Film, Media and Communication	3 years full time, 6 years part time	

GEOGRAPHY AND ENVIRONMENTAL SCIENCES

UNDERGRADUATE

Course title	Duration	
BSc (Hons) Environmental Science	3 years full time, 4 years sandwich with work placement	
BSc (Hons) Environmental Science and Management (Dual Degree)	3 years and 6 months full time with a year at Edith Cowan University	...
BA (Hons) Geography	3 years full time, 4 years sandwich with work placement	
BSc (Hons) Geography	3 years full time, 4 years sandwich with work placement	
BA (Hons) International Development	3 years full time, 4 years sandwich with work placement	
BA (Hons) International Development and Languages	4 years full time with language year abroad	
BSc (Hons) Marine Environmental Science	3 years full time, 4 years sandwich with work placement	

POSTGRADUATE

Course title	Duration	
MSc Coastal and Marine Resource Management	1 year full time, 2 years part time	
MSc Crisis and Disaster Management	1 year full time, 2 years part time	
MPhil Environment, Geography and Geosciences	2 years full time, 4 years part time	J
PhD Environment, Geography and Geosciences	3 years full time, 6 years part time	J
MSc Geographical Information Systems	1 year full time, 3 years part time	
MRes Science and Health	1 year full time, 2 years part time	J

HEALTH CARE AND SOCIAL CARE

UNDERGRADUATE

Course title	Duration
BSc (Hons) Advancing Professional Practice (top-up)	2 years part time (top-up)
BSc (Hons) Biomedical Science	3 years full time, 4 years sandwich with work placement
BSc (Hons) Dental Hygiene	3 years full time
BSc (Hons) Dental Hygiene and Dental Therapy	3 years full time
CertHE Dental Nursing	1 year full time
BSc (Hons) Pharmacology	3 years full time, 4 years sandwich with work placement
MPharm (Hons) Pharmacy	4 years full time
BSc (Hons) Social Work	3 years full time

POSTGRADUATE

Course title	Duration	
MSc Advanced Clinical Practice	3 years part time	...
DBMS Professional Doctorate in Biomedical Science	4–7 years part time	
MPhil Health and Care Professions	2 years full time, 4 years part time	J
MD Health and Care Professions	2 years full time, 4 years part time	J
PhD Health and Care Professions	3 years full time, 6 years part time	J
MSc Health Psychology	1 year full time, 2 years part time	
DHealthSci Professional Doctorate in Health Science	4–7 years part time	

MORE INFORMATION

The majority of courses start in September/October, all courses with additional start dates are highlighted in the key.

English language requirements – pages 22–23

Fees and funding – pages 30–32

Entry requirements – pages 78–79

For full course details, including tuition fees and start dates, please visit the course pages on our website.

Key to course listings

- Faculty of Business and Law
- Faculty of Creative and Cultural Industries
- Faculty of Humanities and Social Sciences
- Faculty of Science and Health
- Faculty of Technology

Additional start dates

J January/February

... Course subject to approval

MSc Human and Applied Physiology	1 year full time, 2 years part time	
MSc Medical Biotechnology	1 year full time, 2 years part time	J
MSc Medical Biotechnology (with Professional Experience)	18 months full time, 30 months part time	... J
DNursing Professional Doctorate in Nursing	4–7 years part time	
DPharm Professional Doctorate in Pharmacy	4–7 years part time	
MPhil Pharmacy and Biomedical Science	2 years full time, 4 years part time	J
MD Pharmacy and Biomedical Science	2 years full time, 4 years part time	J
PhD Pharmacy and Biomedical Science	3 years full time, 6 years part time	J
MRes Science and Health	1 year full time, 2 years part time	J
MSc Social Work	2 years full time	
DSW Professional Doctorate in Social Work	4–7 years part time	
MPhil UPDA	2 years full time, 4 years part time	J
PhD UPDA	3 years full time, 6 years part time	J

HISTORY, POLITICS AND INTERNATIONAL RELATIONS

UNDERGRADUATE

Course title	Duration	
BA (Hons) History	3 years full time, 4 years sandwich with work placement	
BA (Hons) International Development	3 years full time, 4 years sandwich with work placement	
BA (Hons) International Development and Languages	4 years full time with language year abroad	
BA (Hons) International Relations	3 years full time, 4 years sandwich with work placement	
BA (Hons) International Relations and Languages	4 years full time with language year abroad	
BA (Hons) International Relations and Politics	3 years full time, 4 years sandwich with work placement	
LLB (Hons) Law with International Relations	3 years full time, 4 years sandwich with work placement	
BA (Hons) Politics	3 years full time, 4 years sandwich with work placement	

POSTGRADUATE

Course title	Duration	
MPhil Area Studies, History, Politics and Literature	2 years full time, 4 years part time	J
PhD Area Studies, History, Politics and Literature	3 years full time, 6 years part time	J
MRes Humanities and Social Sciences	1 year full time, 2 years part time	
MA International Relations	1 year full time, 2 years part time	

LANGUAGES

UNDERGRADUATE

Course title	Duration	
BA (Hons) Applied Languages	4 years full time with language year abroad	
BA (Hons) International Development and Languages	4 years full time with language year abroad	
BA (Hons) International Relations and Languages	4 years full time with language year abroad	
BA (Hons) Language Studies	3 years full time	
BA (Hons) Modern Languages	4 years full time with language year abroad	

POSTGRADUATE

Course title	Duration	
MA Applied Linguistics and TESOL	1 year full time, 2 years part time	J
MPhil Area Studies, History, Politics and Literature	2 years full time, 4 years part time	J
PhD Area Studies, History, Politics and Literature	3 years full time, 6 years part time	J
MRes Humanities and Social Sciences	1 year full time, 2 years part time	
MPhil Languages and Applied Linguistics	2 years full time, 4 years part time	J
PhD Languages and Applied Linguistics	3 years full time, 6 years part time	J
MA Translation Studies	1 year full time, 2 years part time	

MORE INFORMATION

The majority of courses start in September/October, all courses with additional start dates are highlighted in the key.

English language requirements – pages 22–23

Fees and funding – pages 30–32

Entry requirements – pages 78–79

For full course details, including tuition fees and start dates, please visit the course pages on our website.

Key to course listings

- Faculty of Business and Law
- Faculty of Creative and Cultural Industries
- Faculty of Humanities and Social Sciences
- Faculty of Science and Health
- Faculty of Technology

Additional start dates

J January/February

... Course subject to approval

LAW

UNDERGRADUATE

Course title	Duration
LLB (Hons) Law	3 years full time, 4 years sandwich with work placement
LLB (Hons) Law with Business	3 years full time, 4 years sandwich with work placement
LLB (Hons) Law with Criminology	3 years full time, 4 years sandwich with work placement
LLB (Hons) Law with International Relations	3 years full time, 4 years sandwich with work placement

POSTGRADUATE

Course title	Duration
LLM Corporate Governance and Law/Grad.CG	1 year full time, 30 months part time
LLM Law	1 year full time, 30 months part time
MPhil Law	2 years full time, 4 years part time J
PhD Law	3 years full time, 6 years part time J
LLM Law and LegalTech	1 year full time, 3 years part time

MATHEMATICS AND PHYSICS

UNDERGRADUATE

Course title	Duration
BSc (Hons) Mathematics	3 years full time, 4 years sandwich with work placement
MMath Mathematics	4 years full time, 5 years sandwich with work placement
BSc (Hons) Mathematics for Finance and Management	3 years full time, 4 years sandwich with work placement
BSc (Hons) Mathematics with Statistics	3 years full time, 4 years sandwich with work placement
BSc (Hons) Physics	3 years full time, 4 years sandwich with work placement
MPhys (Hons) Physics	4 years full time, 5 years sandwich with work placement
BSc (Hons) Physics, Astrophysics and Cosmology	3 years full time, 4 years sandwich with work placement
MPhys (Hons) Physics, Astrophysics and Cosmology	4 years full time, 5 years sandwich with work placement

POSTGRADUATE

Course title	Duration
MPhil Cosmology and Gravitation	2 years full time, 4 years part time J
PhD Cosmology and Gravitation	3 years full time, 6 years part time J
MPhil Mathematics	2 years full time, 4 years part time J
PhD Mathematics	3 years full time, 6 years part time J
MPhil Physics	2 years full time, 4 years part time J
PhD Physics	3 years full time, 6 years part time J

MEDIA AND JOURNALISM

UNDERGRADUATE

Course title	Duration
BSc (Hons) Digital Media	3 years full time, 4 years sandwich with work placement
BA (Hons) Global Communication and Media (Dual Degree)	3 years and 6 months full time with a year at Edith Cowan University ...
BA (Hons) Journalism	3 years full time, 4 years sandwich with work placement
BA (Hons) Journalism with Creative Writing	3 years full time, 4 years sandwich with work placement
BA (Hons) Journalism with Media Studies	3 years full time, 4 years sandwich with work placement
BA (Hons) Media and Communication with Foundation Year	4 years full time, 5 years sandwich with work placement
BA (Hons) Media and Digital Practice	3 years full time, 4 years sandwich with work placement
BA (Hons) Media Studies	3 years full time, 4 years sandwich with work placement

MORE INFORMATION

The majority of courses start in September/October, all courses with additional start dates are highlighted in the key.

English language requirements – pages 22–23

Fees and funding – pages 30–32

Entry requirements – pages 78–79

For full course details, including tuition fees and start dates, please visit the course pages on our website.

Key to course listings

- Faculty of Business and Law
- Faculty of Creative and Cultural Industries
- Faculty of Humanities and Social Sciences
- Faculty of Science and Health
- Faculty of Technology

Additional start dates

J January/February

... Course subject to approval

POSTGRADUATE

Course title	Duration	
MRes Creative Industries	1 year full time, 2 years part time	J
MSc Digital Media	1 year full time, 3 years part time	
MPhil Film, Media and Communication	2 years full time, 4 years part time	J
PhD Film, Media and Communication	3 years full time, 6 years part time	J
MA Media and Communication	1 year full time, 2 years part time	

PSYCHOLOGY AND SOCIOLOGY

UNDERGRADUATE

Course title	Duration	
BA (Hons) Childhood and Youth Studies with Psychology	3 years full time, 4 years sandwich with work placement	
BSc (Hons) Criminology with Psychology	3 years full time, 4 years sandwich with work placement	
BSc (Hons) Forensic Psychology	3 years full time, 4 years sandwich with work placement	
BSc (Hons) Psychology	3 years full time, 4 years sandwich with work placement	
BSc (Hons) Sociology	3 years full time, 4 years sandwich with work placement	
BSc (Hons) Sociology with Criminology	3 years full time, 4 years sandwich with work placement	
BSc (Hons) Sociology with Psychology	3 years full time, 4 years sandwich with work placement	
BSc (Hons) Sport and Exercise Psychology	3 years full time, 4 years sandwich with work placement	

POSTGRADUATE

Course title	Duration	
MSc Forensic Psychology	1 year full time, 2 years part time	
MSc Health Psychology	1 year full time, 2 years part time	
MPhil Psychology	2 years full time, 4 years part time	J
PhD Psychology	3 years full time, 6 years part time	J
MRes Science and Health	1 year full time, 2 years part time	J
MSc Sport and Exercise Psychology (BPS accredited)	1 year full time, 2 years part time	

SPORT SCIENCE

UNDERGRADUATE

Course title	Duration	
BSc (Hons) Sport and Exercise Psychology	3 years full time, 4 years sandwich with work placement	
BSc (Hons) Sport and Exercise Science	3 years full time, 4 years sandwich with work placement, 6 years part time	
BSc (Hons) Sport, Health and Exercise Sciences (Dual Degree)	4 years full time with a year at Edith Cowan University	
BSc (Hons) Sport Management (top-up)	1 year full time (top-up)	...
BSc (Hons) Sports Coaching (top-up)	1 year full time (top-up)	...
BSc (Hons) Sports Management and Development	3 years full time, 4 years sandwich with work placement	

POSTGRADUATE

Course title	Duration	
MSc Clinical Exercise Science	1 year full time, 2 years part time	
MSc Human and Applied Physiology	1 year full time, 2 years part time	
MRes Science and Health	1 year full time, 2 years part time	J
MSc Sport and Exercise Psychology (BPS accredited)	1 year full time, 2 years part time	
DProf Professional Doctorate in Sport and Exercise Psychology	6 years part time	
DProf Professional Doctorate in Sport, Exercise and Health Science	6 years part time	
MPhil Sport, Health and Exercise Science	2 years full time, 4 years part time	J
PhD Sport, Health and Exercise Science	3 years full time, 6 years part time	J
MSc Sport Management	1 year full time with mandatory work-based learning element, 2 years part time with mandatory work-based learning element	J
MSc Sports Performance	1 year full time, 2 years part time	
MSc Strength, Conditioning and Rehabilitation	1 year full time, 2 years part time	

MORE INFORMATION

The majority of courses start in September/October, all courses with additional start dates are highlighted in the key.

English language requirements – pages 22–23

Fees and funding – pages 30–32

Entry requirements – pages 78–79

For full course details, including tuition fees and start dates, please visit the course pages on our website.

Key to course listings

- Faculty of Business and Law
- Faculty of Creative and Cultural Industries
- Faculty of Humanities and Social Sciences
- Faculty of Science and Health
- Faculty of Technology

Additional start dates

J January/February

... Course subject to approval

Your steps to apply

HERE ARE THE STEPS YOU NEED TO TAKE TO APPLY FOR YOUR COURSE AND GET YOUR VISA ON TIME.

We understand that getting a visa and making arrangements to study with us takes time and we aim to support you where we can. We are here to help you every step of the way – just email global@port.ac.uk with any questions.

STEP 1 Choose the right course

You might like to talk to one of our offices and advisers in your region who can tell you more about the University.

- Review our courses at www.port.ac.uk/courses
- Check the entry requirements and English language criteria for your country, and speak to a representative for support. You can find details at www.port.ac.uk/your-country
- Contact one of our offices and advisers in Portsmouth, Delhi, Dhaka, Kuala Lumpur, Lagos, Lahore or Shanghai who can offer advice and support. For details, visit www.port.ac.uk/global-contact



STEP 2 Apply early

You can apply directly to the University for all our courses. If you want to apply for undergraduate courses at more than one university in the UK, you can apply through UCAS instead. Alternatively, you can apply in your country through one of our local offices or representatives.

- Check your email regularly (including your spam folder) as we may need more information from you in order to assess your application
- Prepare your personal statement – visit www.port.ac.uk and search for ‘personal statement guidance’
- Choose how you would like to apply and start your application process. If you are applying directly to the University of Portsmouth, you need to apply through the course webpage
- Complete your application and submit it online. You do not need to wait for all your documents to be available to apply – you can supply these as soon as you have them
- For many creative courses, we need to review a relevant portfolio of your work. Find out more at www.port.ac.uk/portfolio-guides

STEP 3 Accepting your place

If you are successful, we will send you an offer of a place at the University. If this is ‘conditional’, it means there is at least one requirement you need to meet before you can be sure of a place on the course. The most common examples of conditions for international students are English language, providing qualification documents and/or making a deposit.

- As soon as you get your offer, review it and accept it via the Applicant View. Accepting your offer means that you have reserved a place on the course. It does not mean that the place is guaranteed; you still need to meet your conditions (see step 4 for all students and step 6 for students who will require a visa for study in the UK)
- Consider a Pre-Sessional English course (if English is one of your conditions) at www.port.ac.uk/pre-sessional-english



STEP 4 IMPORTANT: Upload documents via Applicant View

It is very important to upload any documents needed to meet your offer conditions via your Applicant View. Documents may include qualification transcripts/certificates from your home school/university which show your grades (including your language test certificate, such as IELTS). Once you have applied, we will send you full instructions on how to use Applicant View, including details of who to contact for further support.

- Check your email regularly (including your spam folder) for messages from us about your application
- If requested, please send your documents as soon as they are available

STEP 5

Start looking for your new home

There is plenty of accommodation to choose from on and off the campus. For first-year students, we can offer you a guaranteed place in halls when you accept your offer to study in Portsmouth and meet accommodation application deadlines.

- Look at the accommodation options at www.port.ac.uk/accommodation
- Check your emails regularly (including your spam folder) for a message from the Student Housing Team for details about how to apply for halls of residence – this will be sent from January or November, depending on when you are joining us, and only if you have accepted your offer
- Contact the Student Housing Team at student.housing@port.ac.uk for help and advice on halls of residence and private accommodation in the city



STEP 6

Deposit payments and visa requirements

The conditions of your offer will include making your deposit payment and completing your visa eligibility requirements.

- When you have done this and we have received your payment and all your supporting documentation (see step 4), we will make your offer unconditional, which means you have a confirmed place on the course. We cannot give you a CAS (Confirmation of Acceptance for Studies) statement until you have met all of your conditions and you accept your offer
- When you log into Applicant View, you can go to 'Deposits/Pre-payments' and follow the guidance to make a payment or upload a sponsor letter
- Complete your visa eligibility requirements – please contact ukvi-student-compliance@port.ac.uk if you have any questions

STEP 7

Confirmation of Acceptance for Studies (CAS) statement

A CAS statement allows you to apply for your visa. The earliest we can issue a CAS is six months before the start of your course. We can only send the CAS when your offer is unconditional and you have accepted it, so check steps 3, 4 and 6 again to make sure you have sent us everything we have asked for and have accepted your offer.

- Check that the status of your offer says 'unconditional' on your University of Portsmouth Applicant View or UCAS website, and accept your offer if you have not done so already
- Check your emails regularly for your CAS statement (if you are applying through an agent, this will be sent to both you and your agent)
- Apply for a visa. There is lots of advice at www.port.ac.uk/visa-advice. When you receive your CAS, check to ensure that all the information, including your personal details, are correct. If you need any amendments made, please email cascorrections@port.ac.uk to have this updated before applying for your visa. Apply for your student visa once you are happy your CAS statement is correct. You can apply for your visa up to six months before the start of your course if you are outside of the UK, and three months before if you are already in the UK. If you need visa advice, email student-visa@port.ac.uk

STEP 8

Plan your journey to Portsmouth

It is really important that you arrive in time to enjoy the Orientation Programme and attend your course induction before your course starts. For most students this is in September/October. For students on January/February-start courses, the course induction will take place in January/February. If you are not able to arrive in time, you need to email global@port.ac.uk and let us know so we can discuss your options.

- To read about your first weeks in Portsmouth, visit www.port.ac.uk/firstweek
- To plan your journey, visit www.port.ac.uk/how-to-get-here
- Book your flight

You may like to use our airport pick-up service from Heathrow, which is usually available in September and January. Please see our website closer to the time of your arrival for available dates.

STEP 9

Advice on moving to Portsmouth

We will send you emails before you arrive, full of help and advice for joining us here in Portsmouth. When you arrive, we can help you to settle into the University, find your way around the city and make lots of friends on and off your course.

Join in as many activities as you can during the International Orientation Programme and do not miss out on the fun.

- You will find lots of information for your arrival at www.port.ac.uk/newstudents
- Look out for emails from the University of Portsmouth about joining us for your course



How to apply and entry requirements

How to apply

There are several ways you can apply:

- online at www.port.ac.uk/apply
- via our regional offices and advisers in Delhi, Dhaka, Kuala Lumpur, Lagos, Lahore and Shanghai
- through our overseas representatives
- via UCAS by visiting www.ucas.com or calling +44 330 3330 230

We welcome students who have the potential to complete their course and contribute to university life, regardless of age, background or financial circumstances. We treat every application fairly in accordance with our admissions policy.

Please note

- Part-time study at postgraduate level is permitted on the Student Route visa. The restrictions for part-time study on this visa are: no dependants; no work; no work placements.
- Some courses may require a Disclosure and Barring Service (DBS) check, and/or occupational health screening. Please check with the department if an approved alternative is accepted.
- Some of our courses are only offered to practising UK professionals. Where this is the case, it will be indicated on the course page on our website.
- Please check the website for details of entry requirements for individual courses.
- Some courses may require an ATAS (Academic Technology Approval Scheme) certificate – this will be stated in the conditions of your offer.
- Some of our courses require an interview. These can be conducted online if you are unable to attend in person.

Entry requirements

General entry requirements

For undergraduate study, we will normally expect you to have the equivalent of two to three A levels in appropriate subjects. Please check the course pages on our website for specific entry requirements. We also normally require a minimum of three GCSE passes or equivalent in subjects other than those offered at A level. GCSE English and Mathematics are also normally required.

For postgraduate study, entry requirements will depend on your chosen course. Please visit our website for course-specific entry requirements.

English language requirements

If your first language is not English, the minimum English language proficiency level for undergraduates ranges from IELTS band 6.0 overall with no component score below 5.5, to band 6.5 overall with no component score below 6.0 or equivalent, or GCSE/IGCSE English Language minimum grade C/4. For most of our Master's degrees, you need a minimum of IELTS band 6.5–7.0, with no component below 6.0. Some courses and PhDs require higher scores.

You will find a full list of acceptable English language qualifications at www.port.ac.uk/englishlanguage.

Please note, the UK Visas and Immigration Office regularly make changes to the immigration rules and requirements, so there may be changes to our requirements after this guide is published.

Commonly accepted qualifications

We accept a range of international and EU qualifications – see below for examples and visit www.port.ac.uk/your-country for country-specific entry requirements.

- A levels and AS levels
- BTEC qualifications
- Access to Higher Education
- Irish Leaving Certificate
- Cambridge Pre-U
- China: one year of higher education study or International Foundation Year (IFY)
- Cypriot Apolytirion of Lykeion
- East African Certificate of Education (EACE)
- European Baccalaureate
- French Baccalaureate
- Hong Kong Diploma of Secondary Education (HKDSE)
- International Baccalaureate Diploma
- Malaysian SPM
- WAEC WASSCE/NECO SSCE plus a recognised International Foundation Year (IFY) or OND/HND
- Thawawaya/Tawjihiyah/Thanawiya (General Secondary School Certificate) plus a recognised International Foundation Year (IFY)
- USA: High School Diploma plus Advanced Placement Exams (APS)

The range of qualifications that can be taken is so large that we do not print all individual qualification requirements, but you can find these on our website or the UCAS website.

Application deadline guidance

- UCAS applications – typically 15 January. International applications received after this date will still be considered, but we cannot guarantee that places will be available.
- UCAS applications received from 30 June will automatically be entered into the UCAS Clearing scheme.
- Direct applications for undergraduate and postgraduate courses are considered all year round – but certain courses will have application deadlines to adhere to. Please contact international.admissions@port.ac.uk for course-specific deadlines.
- University Pre-Sessional English courses – deadlines for applications to these courses are typically two weeks before the start of the course. For more information, please see page 23 or contact pse@port.ac.uk.

We advise you to apply as early as possible in order to have sufficient time to apply for a student visa.

Terms and conditions

IT IS IMPORTANT THAT YOU READ AND MAKE SURE YOU UNDERSTAND THIS INFORMATION WHICH FORMS PART OF THE TERMS AND CONDITIONS OF YOUR STUDIES SHOULD YOU CHOOSE TO STUDY AT PORTSMOUTH.

We (the University of Portsmouth) have checked the information in this guide and believe that it is accurate at the time of going to press (June 2021). However, it is possible that some course details may change over time, either where the changes are unavoidable through, for example, staff changes, where changes to the mode of delivery are required to deal with emergency situations such as the COVID-19 pandemic or where it is believed that the changes would be beneficial to the course, such as updating the course content to reflect changes in the discipline or the industry. The University will take all reasonable steps to minimise the impact of any changes on students and will always ensure that students receive the same standard of service. Applicants for such courses will be informed of any significant changes, such as course content changes, with as much notice as possible, so the effects of any changes can be considered by you. You are advised to check the University website for the most up-to-date information at all times, and/or to contact the University for further details if you are at any time uncertain of information.

Agreeing to our terms and conditions

When you accept an offer to study at the University of Portsmouth, you also agree to our Student Contract as well as the University's

policies, rules and regulations. You can read the Student Contract at www.port.ac.uk/terms.

Note that our policies, rules and regulations may change at the start of any academic year. The most up-to-date versions can be found at www.port.ac.uk/terms. It is best to be aware of these documents and to read them before you accept your offer of a place. This is so you understand the commitment you are making and what you can expect from the University.

If you would like more information on how we process your application, there is more on our undergraduate applications, postgraduate applications or international applications pages online.

Tuition fee terms and conditions

The information on our website for each course includes tuition fee terms and conditions. This sets out in detail how tuition fees are calculated, increased and charged. It may be necessary, on some courses, to pay extra costs in relation to fieldtrips/study visits etc. If this is the case, this information will be available on the Undergraduate Fees and Student Finance page of the University website.

As above, you are advised, at all times, to check the University website for the

most up-to-date information on tuition, and other fees. For the latest information, visit www.port.ac.uk/feesandfunding.

Courses 'subject to approval'

Courses advertised as 'subject to approval' have successfully completed the first stage of the course approval process. However, the full academic detail is subject to consideration and approval by the University in the second and final stage of the approval process, which happens after this publication is printed. Applicants for such courses will be informed of any significant changes to the advertised course as soon as possible during the application process so that you may make an informed choice about the course.

Where a change to the course content and/or fees has a material adverse impact on you, you will be entitled to terminate your obligations to the University.

Your responsibility

It is your responsibility to confirm that the course you wish to study is suitable for your needs (particularly any additional needs/disabilities you might have), interests and abilities, and that the service, support and facilities provided by the University of Portsmouth meet your requirements. If you accept the offer of a place on one of our courses but later decide that you

wish to change or withdraw from your course of study, without there being any changes to the course for which you applied, the responsibility for doing so and for any costs that you may incur is yours alone.

The University will provide its services to you with all due care and skill. We do not accept responsibility if we are unable to fulfil our teaching commitments at all through circumstances beyond our control. These include (by way of example but not limitation) illness, industrial action, pandemic and/or epidemic, travel restrictions, civil emergencies or the actions of third parties. We will always try, however, where possible, to make alternative arrangements to fulfil our commitments to you.

Brexit

The United Kingdom's withdrawal from the European Union may mean that courses which are accredited by professional bodies are not recognised within the EU in the same way as they have been historically. If you have any queries in relation to the impact of Brexit on your specific course, please contact the University and we will be happy to give you guidance and information relevant to your circumstances.

BSc (Hons) Dental Hygiene

This programme has been provisionally accepted by the GDC registrar. The decision as to the approval of a new programme for dental care professionals will not be made until the first cohort has completed their studies and examinations, or assessments, and the programme inspected by the GDC.

Contact us

Please get in contact if there is anything at all we can help you with. There are numerous ways to get in touch.

University of Portsmouth Global

University of Portsmouth
Nuffield Centre, St Michael's Road, Portsmouth, PO1 2ED
United Kingdom

T +44 (0)23 9284 3488

E global@port.ac.uk

W www.port.ac.uk

Delhi, India

Sannam S4, University
of Portsmouth,
14th Floor Devika Towers,
6 Nehru Place, New Delhi,
Delhi, 110019

T +91 11 4212 4172

E india-office@port.ac.uk

Dhaka, Bangladesh

TCL Global Office
House-39/1, Road-2,
LilyRin Tower (8th floor),
Next to Shimanto Square,
Dhanmondi,
1209 Dhaka

T +880 130 964 2651

E bangladesh@port.ac.uk

Kuala Lumpur, Malaysia

University of Portsmouth,
South East Asia Office,
Suite 13A-05,
Tower B, Northpoint Offices,
Mid Valley City, No.1
Medan Syed Putra,
Utara 59200, Kuala Lumpur

T +60 3 2287 6607

E seao@port.ac.uk

Lagos, Nigeria

Navitas, University
of Portsmouth,
56 Opebi Road, Ikeja, Lagos

T +234 (0) 807 680 1798

E chinelo.konwea@port.ac.uk

Lahore, Pakistan

T +9234 5005 5109

E hatim.qadeer@port.ac.uk

Shanghai, China

University of Portsmouth,
Shanghai Office, Room 1006,
Lansheng Plaza, 8 Central
Huaihai Road,
Shanghai, 200021

T +86 216319 1155

E china.office@port.ac.uk

W www.universityofportsmouth.cn

Admissions enquiries

Department of Student
and Academic Admissions

T +44 (0)23 9284 5566

E international.admissions@port.ac.uk

Course index alphabetical

A

Accountancy and Financial Management (top-up) BA (Hons)	52
Accounting with Finance BA (Hons)	52
Advancing Professional Practice (top-up) BSc (Hons)	67
Animation BA (Hons)	58
Applied Languages BA (Hons)	69
Architecture BA (Hons)	53

B

Biochemistry BSc (Hons)	54
Biology BSc (Hons)	54
Biomedical Science BSc (Hons)	54, 67
Building Surveying BSc (Hons)	53
Business and Human Resource Management BA (Hons)	54
Business and Management BA (Hons)	54
Business and Supply Chain Management BSc (Hons)	54
Business Information Systems BSc (Hons)	59
Business Management and Entrepreneurship BA (Hons)	54
Business with Business Communication (top-up) BA (Hons)	55

C

Childhood and Youth Studies BA (Hons)	57
Childhood and Youth Studies with Criminology BA (Hons)	57, 60
Childhood and Youth Studies with Psychology BA (Hons)	57, 72
Civil Engineering BEng (Hons)	62
Civil Engineering MEng	62
Computer Animation and Visual Effects BSc (Hons)	58
Computer Games Enterprise BSc (Hons)	58
Computer Games Technology BSc (Hons)	58
Computer Networks BSc (Hons)	59
Computer Science BSc (Hons)	59
Computer Science MEng	59
Computing BSc (Hons)	59
Construction Engineering Management BEng (Hons)	62
Counterterrorism, Intelligence and Cybercrime (Dual Degree) BSc (Hons)	60
Creative Computing with Foundation Year BA (Hons)	58
Creative Computing with Foundation Year BSc (Hons)	58
Creative Media Technologies BSc (Hons)	58
Creative Music Technology (top-up) BA (Hons)	58
Creative Writing BA (Hons)	64
Criminology and Criminal Justice BSc (Hons)	60
Criminology and Cybercrime BSc (Hons)	60
Criminology and Forensic Studies BSc (Hons)	60
Criminology with Environmental Justice BSc (Hons)	60
Criminology with Psychology BSc (Hons)	60, 72
Cyber Security and Forensic Computing BSc (Hons)	59, 60

D

Data Science and Analytics BSc (Hons)	59
Dental Hygiene BSc (Hons)	67
Dental Hygiene and Dental Therapy BSc (Hons)	67
Dental Nursing CertHE	67
Digital Marketing BA (Hons)	55
Digital Media BSc (Hons)	71
Drama and Performance BA (Hons)	61

E

Early Childhood Studies BA (Hons)	57
Early Years Initial Teacher Training GradCert	57
Economics BSc (Econ) (Hons)	52
Economics and Management BA (Hons)	52
Economics, Finance and Banking BSc (Econ) (Hons)	52
Education Studies (top-up) BA (Hons)	57
Electronic Engineering BEng (Hons)	62
Electronic Engineering MEng	62
Engineering and Technology with Foundation Year BEng (Hons)	62
Engineering Geology and Geotechnics BEng (Hons)	61, 62
English and Creative Writing BA (Hons)	64
English Language and Linguistics BA (Hons)	64
English Literature BA (Hons)	64
Environmental Science BSc (Hons)	66
Environmental Science and Management (Dual Degree) BSc (Hons)	66

F

Fashion and Textile Design BA (Hons)	65
Film Production BA (Hons)	65
Film Studies BA (Hons)	65
Film Studies and Creative Writing BA (Hons)	64, 65
Finance with Business Communication (top-up) BA (Hons)	52
Financial Management BA (Hons)	52
Forensic Psychology BSc (Hons)	60, 72
Further Education and Training CertEd	57

G

Geography BA (Hons)	66
Geography BSc (Hons)	66
Geology BSc (Hons)	61
Global Communication and Media (Dual Degree) BA (Hons)	65, 71
Graphic Design BA (Hons)	65

H

History BA (Hons)	68
--------------------------	----

I

Illustration BA (Hons)	65
Innovation Engineering BEng (Hons)	62
Innovation Engineering MEng	62
Interior Architecture and Design BA (Hons)	53
International Business BA (Hons)	55
International Business Communication BA (Hons)	55
International Development BA (Hons)	66, 68
International Development and Languages BA (Hons)	66, 68, 69
International Relations BA (Hons)	68
International Relations and Languages BA (Hons)	68, 69
International Relations and Politics BA (Hons)	68
International Trade and Business Communication BA (Hons)	55
International Trade, Logistics and Business Communication (top-up) BA (Hons)	55

J

Journalism BA (Hons)	71
Journalism with Creative Writing BA (Hons)	64, 71
Journalism with Media Studies BA (Hons)	71

L

Language Studies BA (Hons)	69
Law LLB (Hons)	70
Law with Business LLB (Hons)	55, 70
Law with Criminology LLB (Hons)	60, 70
Law with International Relations LLB (Hons)	68, 70
Leadership, Business and Management (top-up) BA (Hons)	55

If you want to join one of our courses, but cannot start in September, a range of our undergraduate and postgraduate courses have additional start dates. Find out more by visiting the course information on pages 52–73.

Course index alphabetical

UNDERGRADUATE

POSTGRADUATE

M

Marine Biology BSc (Hons)	54
Marine Environmental Science BSc (Hons)	66
Marketing BA (Hons)	55
Mathematics BSc (Hons)	70
Mathematics MMath	70
Mathematics for Finance and Management BSc (Hons)	52, 70
Mathematics with Statistics BSc (Hons)	70
Mechanical and Aeronautical Engineering BEng (Hons)	62
Mechanical and Manufacturing Engineering BEng (Hons)	62
Mechanical Engineering BEng (Hons)	62
Mechanical Engineering MEng	62
Media and Communication with Foundation Year BA (Hons)	71
Media and Digital Practice BA (Hons)	71
Media Studies BA (Hons)	71
Modern Languages BA (Hons)	69
Music Technology BSc (Hons)	61
Musical Theatre BA (Hons)	61

P

Palaeontology BSc (Hons)	61
Pharmacology BSc (Hons)	67
Pharmacy MPharm (Hons)	67
Photography BA (Hons)	65
Physics BSc (Hons)	70
Physics MPhys (Hons)	70
Physics, Astrophysics and Cosmology BSc (Hons)	70
Physics, Astrophysics and Cosmology MPhys (Hons)	70
Politics BA (Hons)	68
Product Design and Innovation BSc (Hons)	62
Professional Policing BSc (Hons)	60
Property Development BSc (Hons)	53
Psychology BSc (Hons)	72

Q

Quantity Surveying BSc (Hons)	53
--------------------------------------	----

R

Renewable Energy Engineering BEng (Hons)	63
Renewable Energy Engineering MEng	63

S

Social Work BSc (Hons)	67
Sociology BSc (Hons)	72
Sociology with Criminology BSc (Hons)	60, 72
Sociology with Psychology BSc (Hons)	72
Software Engineering BSc (Hons)	59
Sport and Exercise Psychology BSc (Hons)	72, 73
Sport and Exercise Science BSc (Hons)	73
Sport, Health and Exercise Sciences (Dual Degree) BSc (Hons)	73
Sport Management (top-up) BSc (Hons)	55, 73
Sports Coaching (top-up) BSc (Hons)	73
Sports Management and Development BSc (Hons)	73

T

Television and Broadcasting BSc (Hons)	65
---	----

V

Virtual and Augmented Reality BSc (Hons)	58
---	----

A

Accounting and Data Analytics MSc	52
Accounting and Finance MSc	52
Accounting and Financial Management MPhil	52
Accounting and Financial Management PhD	52
Advanced Clinical Practice MSc	67
Advanced Manufacturing Technology MSc	63
Applied Aquatic Biology MSc	54
Applied Linguistics and TESOL MA	69
Architecture MArch	53
Architecture MPhil	53
Architecture PhD	53
Architecture Final Examination in Professional Practice (Part 3)	53
Architecture International Professional Practice (Part 3)	53
Area Studies, History, Politics and Literature MPhil	64, 69
Area Studies, History, Politics and Literature PhD	64, 69
Art, Design and Performance MPhil	61, 65
Art, Design and Performance PhD	61, 65

B

Biological Sciences MPhil	54
Biological Sciences PhD	54
Biomedical Science DBMS Professional Doctorate in	67
Biotechnology MSc	54
Biotechnology (with Professional Experience) MSc	54
Building Information Management MSc	53
Business Administration DBA Professional Doctorate in	55
Business and Management MSc	55
Business Communication for International Leadership MA	55

C

Civil Engineering MSc	63
Civil Engineering and Surveying MPhil	63
Civil Engineering and Surveying PhD	63
Clinical Exercise Science MSc	73
Coastal and Marine Resource Management MSc	66
Computer Network Administration and Management MSc	59
Computing MPhil	59
Computing PhD	59
Conservation Architecture MA	53
Construction Project Management MSc	63
Corporate Governance and Law/Grad.CG LLM	70
Cosmology and Gravitation MPhil	71
Cosmology and Gravitation PhD	71
Creative Industries MRes	53, 58, 61, 65, 66, 72

Creative Technologies MSc	58
Creative Technologies MPhil	58
Creative Technologies PhD	58
Creative Writing MA	64
Criminal Justice MSc	60
Criminal Justice DCrimJ Professional Doctorate in	60
Criminal Justice Studies MPhil	60
Criminal Justice Studies PhD	60
Crisis and Disaster Management MSc	66
Cyber Security and Forensic Information Technology MSc	59, 60

D

Data Analytics MSc	59
Data Analytics (with Professional Experience) MSc	59
Digital Business Management MSc	55
Digital Marketing MA	55
Digital Media MSc	72

E

Economics, Finance and Banking MSc	52
Economics and Finance MPhil	52
Economics and Finance PhD	52
Education EdD Professional Doctorate in	57
Educational Leadership and Management PgCert	57
Educational Leadership and Management PgDip	57
Educational Leadership and Management MSc	57
Education and Sociology MPhil	57
Education and Sociology PhD	57

If you want to join one of our courses, but cannot start in September, a range of our undergraduate and postgraduate courses have additional start dates. Find out more by visiting the course information on pages 52–73.

... Course subject to approval



Course index alphabetical

E... Continued

Education Studies MA	57
Electronic and Electrical Engineering MSc	63
Electronic and Electrical Engineering (with Professional Experience) MSc	63
Energy and Electronic Engineering MPhil	63
Energy and Electronic Engineering PhD	63
Energy and Power Systems Management MSc	63
Engineering Geology MSc	62, 63
Engineering Management MSc	63
Environmental Geology and Contamination MSc	62
Environment, Geography and Geosciences MPhil	62, 66
Environment, Geography and Geosciences PhD	62, 66

F

Fashion and Textiles MA	65
Fashion Marketing MA	55, 65
Fashion Marketing (with Professional Experience) MA	55, 65
Film and Television MSc	66
Film, Media and Communication MPhil	66, 72
Film, Media and Communication PhD	66, 72
Finance MSc	52
Forensic Accounting MSc	52
Forensic Psychology MSc	60, 72
Further Education and Training PGCE	57

G

Geographical Information Systems MSc	66
Geological and Environmental Hazards MSc	62
Graphic Design MA	65

H

Health and Care Professions MPhil	67
Health and Care Professions MD	67
Health and Care Professions PhD	67
Health Psychology MSc	67, 72
Health Science DHealthSci Professional Doctorate in	67
Human and Applied Physiology MSc	68, 73
Human Resource Development (top-up) MSc	55
Human Resource Development and Training Management PgDip	56
Human Resource Management PgDip	56
Human Resource Management (top-up) MSc	56
Human Resource Management MSc	56
Humanities and Social Sciences MRes	57, 60, 64, 69

I

Illustration MA	65
Information Systems MSc	59
Innovation Management and Entrepreneurship MSc	56
Interior Architecture and Design MA	53
International Business and Management MSc	56
International Finance and Banking MSc	52
International Human Resource Management MSc	56
International Marketing MA	56
International Relations MA	69

L

Languages and Applied Linguistics MPhil	69
Languages and Applied Linguistics PhD	69
Law LLM	70
Law MPhil	70
Law PhD	70
Law and LegalTech LLM	70
Leadership and Management (top-up) MSc	56
Logistics and Supply Chain Management MSc	56

If you want to join one of our courses, but cannot start in September, a range of our undergraduate and postgraduate courses have additional start dates. Find out more by visiting the course information on pages 52–73.

M

Marketing MPhil	56
Marketing PhD	56
Marketing Analytics MA	56
Mathematics MPhil	71
Mathematics PhD	71
Mechanical and Design Engineering MPhil	63
Mechanical and Design Engineering PhD	63
Mechanical Engineering MSc	63
Media and Communication MA	72
Medical Biotechnology MSc	54, 68
Medical Biotechnology (with Professional Experience) MSc	54, 68

N

Nursing DNursing Professional Doctorate in	68
---	----

O

Occupational Health and Safety Management MSc	56
Occupational Health, Safety and Environmental Management MSc	56
Operations and Systems Management MPhil	56
Operations and Systems Management PhD	56
Organisation Studies and Human Resource Management MPhil	56
Organisation Studies and Human Resource Management PhD	56

P

Petroleum and Gas Engineering MSc	63
Pharmacy DPharm Professional Doctorate in	68
Pharmacy and Biomedical Science MPhil	68
Pharmacy and Biomedical Science MD	68
Pharmacy and Biomedical Science PhD	68
Photography MA	65
Physics MPhil	71
Physics PhD	71
Project Management MSc	56
Psychology MPhil	72
Psychology PhD	72

Q

Quantity Surveying MSc	53
-------------------------------	----

R

Risk, Crisis and Resilience Management MSc	56
---	----

S

Science and Health MRes	54, 62, 66, 68, 72, 73
Security Risk Management DSyRM Professional Doctorate in	60
Social Work MSc	68
Social Work DSW Professional Doctorate in	68
Sport and Exercise Psychology (BPS accredited) MSc	72, 73

Sport and Exercise Psychology DProf Professional Doctorate in	73
Sport, Exercise and Health Science DProf Professional Doctorate in	73
Sport, Health and Exercise Science MPhil	73
Sport, Health and Exercise Science PhD	73
Sport Management MSc	56, 73
Sports Performance MSc	73
Strategic Leadership MBA	56
Strategy, Enterprise and Innovation MPhil	56
Strategy, Enterprise and Innovation PhD	56
Strength, Conditioning and Rehabilitation MSc	73
Sustainable Cities MA	53

T

Theatre: Socially Engaged Practice MA	61
Translation Studies MA	69

U

UPDA MPhil	68
UPDA PhD	68

... Course subject to approval

How to find us

PORTSMOUTH IS A WELL-CONNECTED CITY WITH EXCELLENT TRANSPORT LINKS.

Able to visit but can't make an open day? Email global@port.ac.uk to organise a campus tour with one of our student ambassadors.

Coach service

- Regular daily coach services to/from:
- London for countrywide connections
 - Bristol for West Country, South Wales
 - Birmingham
 - Heathrow Airport

Sea

- Sailings to/from:
- Cherbourg
 - Le Havre
 - Caen/Ouistreham
 - Bilbao
 - St Malo
 - Santander
 - Guernsey
 - Jersey

Frequent daily services to/from the Isle of Wight:

- Catamaran (20 mins)
- Hovercraft (10 mins)
- Car/passenger ferry (40 mins)

Rail

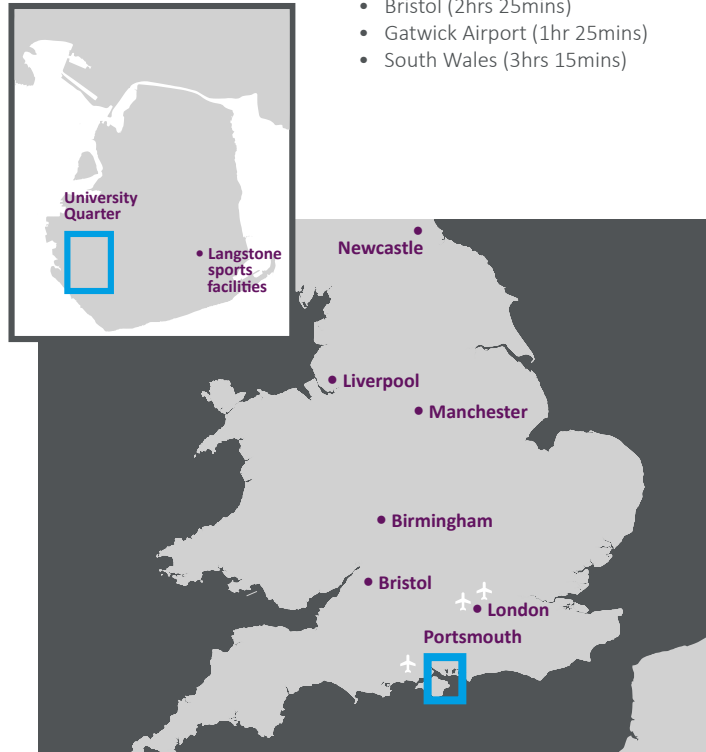
- London Waterloo (1hr 30mins)
- Bristol (2hrs 25mins)
- Gatwick Airport (1hr 25mins)
- South Wales (3hrs 15mins)

Road

From London (A3(M)) and the east: after the junction of the A3(M) and A27, continue west along the A27 until you reach junction 12 of the M27 (signposted M275 Portsmouth, continental ferries). Bear left here onto the M275. Follow signs to the University.

From Southampton and the west: follow the M27 past Fareham and at junction 12 follow signs for M275 Portsmouth, continental ferries. Follow signs to the University.

Portsmouth



UNIVERSITY BUILDINGS

6-8 Hampshire Terrace	29	Ravelin House	34
Anglesea Building	7	Ravelin Sports Centre	33
Buckingham Building	4	(Opening 2021)	
Burnaby Building	5	Richmond Building	6
Burnaby Terrace	10	Rosalind Franklin East	16
Dennis Sciana Building	9	Rosalind Franklin West	15
Dental Academy	31	Spinnaker Building	21
Eldon Building	20	Spinnaker Sports Centre	24
Eye Clinic	25	St Andrew's Court	18
Future Technology Centre	3	St George's Building	32
Halpern House	26	St Michael's Building	13
King Henry Building	12	St Paul's Gym	27
Lion Gate Building	1	Union Building	28
Mercantile House	23	University House	19
Milldam	8	University Learning Centre	17
Nuffield Centre	22	University Library	30
Park Building	11	White Swan Building	14
Portland Building	2	William Beatty Building / Dental Academy	31

UNIVERSITY AND PARTNERS' HALLS OF RESIDENCE

Bateson Hall	41	Central Library	F
Burrell House	44	Civic Offices	D
Catherine House	35	City Museum	I
Chaucer House	38	Courts	G
Greetham Street Hall	37	Portsmouth Guildhall	E
Harry Law Hall	40	New Theatre Royal	H
Rosalind Franklin Halls	39	Portsmouth and Southsea station	C
Margaret Rule Hall	36	Post Office	B
Rees Hall	43	St John's Catholic Cathedral	A
Trafalgar Hall	42		

CITY BUILDINGS

Approx 300 metres

0 200 metres

Guidhall Walk to seafront (20 minutes walk)

From M275 into the City

To Portsmouth Historic Dockyard

To Gunwharf Quays, Spinnaker Tower, the Hard Interchange, Portsmouth Harbour station and the seafront (15 minutes walk)

Guildhall Walk to the Institute of Marine Sciences and Langstone sports facilities (2 miles)



HOW GOOD IS YOUR PROSPECTUS?

It is printed on 100 per cent recycled paper, using vegetable-based inks. The laminate is made from cellulose, not plastic, and is fully recyclable. All better for the planet – and that is good for all of us.




Teaching
Excellence
Framework

Contact us

T +44 (0)23 9284 3488


E global@port.ac.uk

www.port.ac.uk

 @UoPGlobal

 @UoPGlobal

 @UoPGlobal

 UniversityofPortsmouth