



OXFORD  
BROOKES  
UNIVERSITY

# NEVER STOP ACHIEVING

Guide for International  
Students 2022

#ThisIsBrookes

# Welcome



"At Oxford Brookes we are delighted to welcome international students from across the world. You help us to build a community of diversity that benefits everybody. Here you will be encouraged, challenged and supported to achieve your goals. Our ways of teaching, support systems and other activities are designed to give you opportunities to build your confidence and realise your ambitions. We want to know where you're aiming and we make it our business to get you there. We are proud of our students and graduates as they go out into the world to achieve great things."

**PROFESSOR ALISTAIR FITT, VICE-CHANCELLOR**

# Contents

- |    |  |    |   |
|----|--|----|---|
| 4  | Oxford: a great place for students     | 21 | Psychology, Public Health and Social Work |
| 7  | Why Oxford Brookes?                    | 22 | Social Sciences                           |
| 8  | Accounting, Finance and Economics      | 23 | Sport, Exercise and Nutrition             |
| 9  | Architecture                           | 24 | Pathways courses                          |
| 10 | Arts, Digital Media & Publishing       | 27 | Research degrees                          |
| 11 | Biological and Medical Sciences        | 28 | How to apply                              |
| 12 | Built Environment                      | 29 | Help with your application                |
| 13 | Business and Management                | 30 | After applying: what to do next           |
| 14 | Computing and Mathematics              | 31 | Fees and funding                          |
| 15 | Education                              | 32 | University accommodation                  |
| 16 | Healthcare                             | 34 | Preparing for your career                 |
| 17 | Humanities                             | 36 | Supporting your student journey           |
| 18 | Law                                    | 37 | Sport                                     |
| 19 | Marketing, Events and Hospitality      | 38 | Brookes Union                             |
| 20 | Mechanical Engineering and Motorsports | 39 | Get in touch                              |

*The University aims to provide clear and accurate information in line with guidance issued to higher education providers by the Competition and Markets Authority on consumer protection law.*

*All information is correct at the time of going to print. Following publication, please refer to the University's website for the most up-to-date details.*



"As soon as I saw the university for the first time I was amazed. I came through the John Henry Brookes Building and it's just amazing ... I've already recommended Oxford Brookes to a lot of my friends."

**MUHAMED SELMANI, CROATIA, INTERNATIONAL FOUNDATION DIPLOMA**

# Oxford: a great place for students

Look beyond Oxford's dreaming spires and impressive history and you'll find a vibrant and diverse student community. Whether you're looking for museums, pubs, galleries, parks or delicious food, you'll definitely find the Oxford for you.



"Living in Oxford? I feel it's one of the most amazing experiences ... I have found that the local people here in Oxford are really welcoming and friendly ... I simply love the city."

NIVEDITA BRAHMA, INDIA, PRE-MASTER'S CERTIFICATE



View from the Varsity Club, Oxford city centre

Airline buses connect Oxford with London Heathrow and Gatwick airports day and night [airline.oxfordbus.co.uk](http://airline.oxfordbus.co.uk)



Westgate shopping centre



O2 Academy, Cowley Road



Punting on the River Cherwell

## Oxford: student city

We know that choosing where to go to university is a big decision and that not all students want the same thing. Luckily, Oxford has something for everyone.

### 1. Oxford Brookes University, Headington Campus

Located in Headington, a leafy residential suburb, our main campus is walking distance from parks and a short bus ride from the city centre and the Cowley Road.

### 2. South Park

Two minutes walk from our Headington Campus, this green space offers some of the best views of Oxford's beautiful skyline.

### 3. Cowley Road

A vibrant area with places to eat from all corners of the globe. With pubs, bars and cafes, it's a firm favourite with students.

### 4. O2 Academy Oxford

This Cowley Road music venue hosts headline acts, as well as club nights. Brookes Sport student nights take place here every Wednesday during semester time.

### 5. The Ultimate Picture Palace

Offering student discounts, this is Oxford's first independent cinema, showing everything from the latest blockbusters, to foreign language films and the classics.

### 6. Punting down the River Cherwell

A quintessentially Oxford experience, punting is a unique way to see the city from the river.

### 7. Oxford Botanic Gardens

With free entry for Oxford Brookes students, you can explore Britain's oldest botanic garden that has over 6,000 different plant species!

### 8. Queen's Lane Coffee House

A great place to grab a coffee or slice of cake. Opened in 1654, it's reputed to be the oldest continually working coffee house in the whole of Europe.

### 9. Westgate shopping centre

Find over 100 stores, a cinema, restaurants, cafes, junkyard golf, a gym and much more. There's plenty to see and do, with many places offering student discounts.

### 10. Modern Art Oxford

Free and open to all, this gallery showcases cutting-edge exhibitions and innovative programmes.

### 11. Ashmolean Museum

With free entry, this art and archaeology museum has world famous collections, including Egyptian mummies and the largest collection of Raphael drawings.

### 12. Natural History Museum and Pitt Rivers Museum

From dinosaur skeletons to shrunken heads – these museums are free to enter and hold more than 5 million specimens!

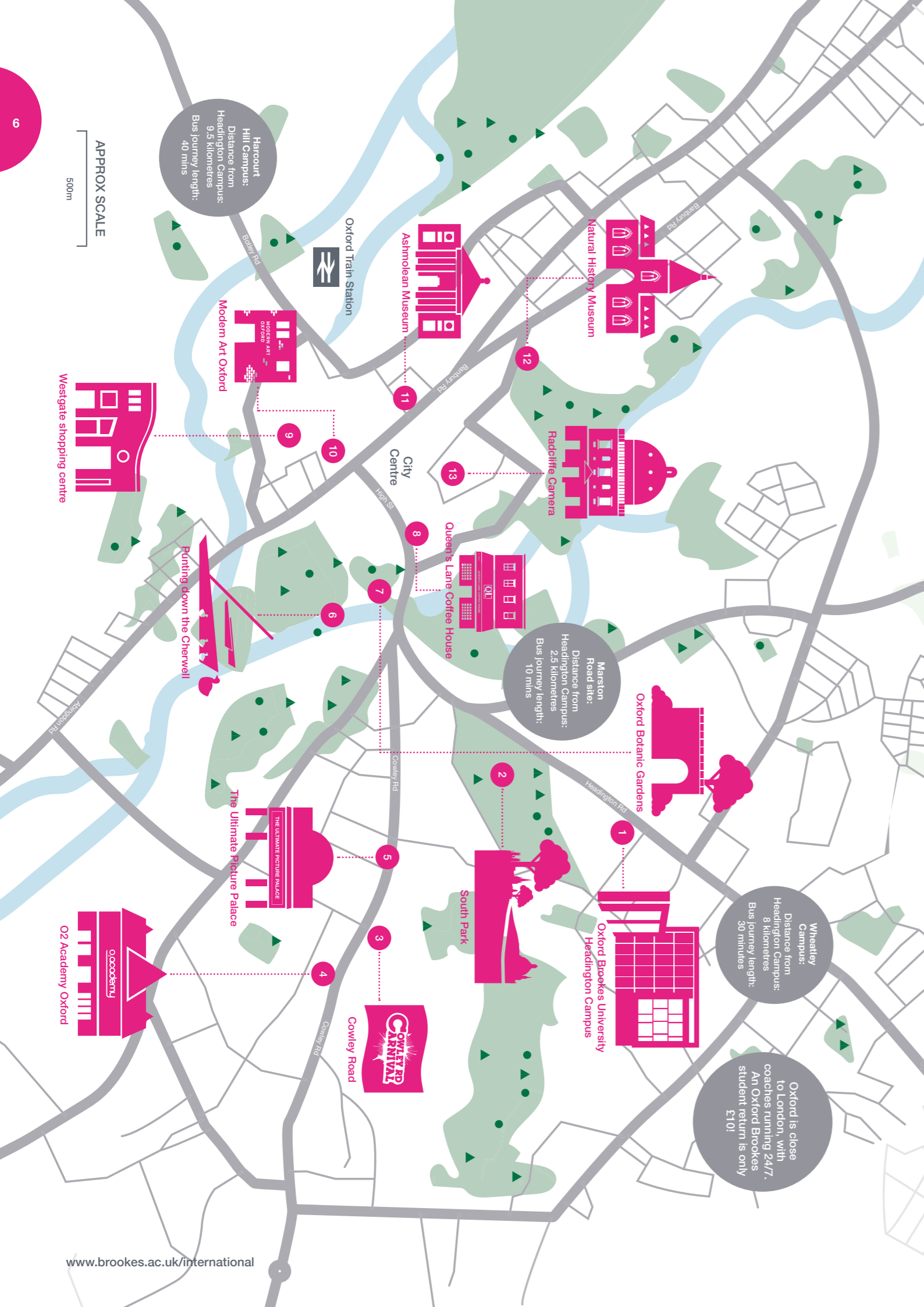
### 13. Radcliffe Camera

One of Oxford's most photographed landmarks, the area around here will have you feeling like you've stepped back in time.

Find all of these on the Oxford map on the next page ...



Radcliffe Camera



# Why Oxford Brookes?



17%

of our students are international, from **more than 140 countries**

*HESA 2019/20*



2<sup>nd</sup>

young university in the UK for **teaching**

*Times Higher Education Young University Rankings 2020*



95%

of Oxford Brookes students are **in employment and/or further study** within 6 months of graduating

*HESA Destination of Leavers 2018*



The **only UK university** ranked in the top 50 institutions under 50 years old

*QS World University Rankings Top 50 Under 50 2021*



Our **global MBA** programme is in the **top 20 world ranking**

*2021 QS Online MBA Rankings*



Among the **world's top universities** in 13 individual subject areas:

- Accounting and Finance
- Architecture & Built Environment
- Biological Sciences
- Business & Management Studies
- Computer Science & Information Systems
- Economics and Econometrics
- Education
- Engineering – Mechanical, Aeronautical & Manufacturing
- English Language and Literature
- Hospitality & Leisure Management
- Law
- Modern Languages
- Politics & International Studies

*QS World University Rankings by Subject 2021*

# Accounting, Finance and Economics

## WHY STUDY WITH US?

1. Our **outstanding links with leading employers** open up exciting opportunities to develop valuable experience with an optional year-long, paid work placement.
2. Our course content stays up-to-date through our **close relationships with professional bodies**. These partnerships include the Association of Chartered Certified Accountants (ACCA).
3. You will learn to think **critically and strategically** as well as have opportunities to **apply concepts to a wide range of real world business problems**.



### Undergraduate courses

Course title	Qualification	Fees 2022/23*	Duration**	Start date(s)
Accounting and Economics	BSc (Hons)	£14,900	3 years (4 with placement)	September
Accounting and Finance	BSc (Hons)	£14,900	3 years (4 with placement)	September
Business and Finance	BSc (Hons)	£14,900	3 years (4 with placement)	September
Economics, Finance and International Business	BSc (Hons)	£14,900	3 years (4 with placement)	September or January
Economics, Politics and International Relations	BA (Hons)	£14,900	3 years (4 with placement)	September or January

### Postgraduate courses

Course title	Qualification	Fees 2022/23*	Duration**	Start date(s)
Accounting and Finance	MSc	£16,200	1 year	September
Finance	MSc	£16,200	1 year	September or January
Strategic Professional Accounting and Finance	MSc	£16,200	1 year	September

\*Fees quoted are for 2022-23 academic year only – please note that tuition fees may increase in subsequent years both for new and continuing students. See page 31 for more information. \*\*Duration listed is for full-time study unless otherwise specified.



Our graduates are employed by the most prestigious organisations, such as Deloitte and PwC.

# Architecture

## WHY STUDY WITH US?

1. You will gain **hands-on experience** working on **live projects** for professional clients and you will produce a rich portfolio of high quality design work, giving you an advantage when seeking employment in architectural practices locally and internationally.
2. You'll have full access to our **purpose-designed studios** in our RIBA National Award-winning building, allowing you to be able to work flexibly in a way that suits you.
3. We are **ranked 8th for Architecture in the UK** in the Guardian League Table 2021 and our Applied Design in Architecture course is accredited by the RIBA, ARB and LAM.



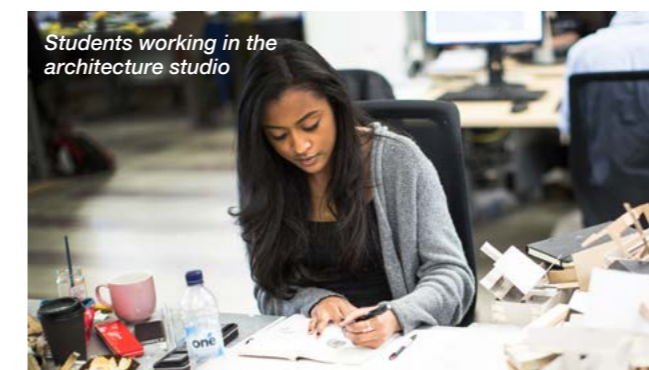
### Undergraduate courses

Course title	Qualification	Fees 2022/23*	Duration**	Start date(s)
Architecture	BA (Hons)	£15,500	3 years	September
Interior Architecture	BA (Hons)	£15,500	3 years	September

### Postgraduate courses

Course title	Qualification	Fees 2022/23*	Duration**	Start date(s)
Applied Design in Architecture	MArchD (RIBA / ARB Part 2 / LAM Accredited)	£15,200	2 years	September
Architecture	MArch / PGDip	£15,500	1 year	September
Development and Emergency Practice	MA / PGDip / PGCert	£15,900	1 year	September
Humanitarian Action and Peacebuilding	MA / PGCert	£4,800	30 months <i>Distance learning only</i>	September or January
Interior Architecture	MA	£15,000	1 year	September ( <i>Subject to validation</i> )
International Architectural Regeneration and Development	MA / PGDip / PGCert	£15,900	1 year	September
Shelter after Disaster	PGCert	£5,200	1 semester	September or January
Sustainable Architecture: Evaluation and Design	MA / PGDip / PGCert	£15,900	1 year	September

\*Fees quoted are for 2022-23 academic year only – please note that tuition fees may increase in subsequent years both for new and continuing students. See page 31 for more information. \*\*Duration listed is for full-time study unless otherwise specified.



“I was really blown away by the number of things the university has to offer ... Oxford Brookes was the only university that gave me the chance to choose from a number of very interesting options and specialise in a specific field of architecture which is almost unheard of.”

LARY EHIMUAN, MArchD ARCHITECTURE GRADUATE

# Arts, Digital Media and Publishing

## WHY STUDY WITH US?

1. Our **specialist facilities** include 24-hour studios, printmaking, sculpture workshops, motion capture suite, darkrooms, virtual reality software and 4K cinema room.
2. Oxford is home to famous galleries, great music venues, arthouse and multiplex cinemas, and **world renowned publishing houses**.
3. We have **excellent industry connections locally and nationally**. You'll be encouraged to enter competitions and exhibitions, attend field trips and film festivals and to engage with industry and community-based projects.



Caption please

## Undergraduate courses

Course title	Qualification	Fees 2022/23*	Duration**	Start date(s)
Art and Design Foundation	Foundation Diploma	£15,200	1 year	September
Digital Media Production	BA or BSc (Hons)	£14,600	3 years (4 with placement)	September
Film	BA (Hons)	£14,600	3 years	September
Fine Art	BA (Hons)	£14,600	3 years	September
Graphic Design	BA (Hons)	£14,600	3 years	September
Music	BA (Hons)	£14,600	3 years	September
Media, Journalism and Publishing	BA (Hons)	£14,900	3 years	September
Photography	BA (Hons)	£14,600	3 years	September

## Postgraduate courses

Course title	Qualification	Fees 2022/23*	Duration**	Start date(s)
Digital Media Production	MSc	£15,500	1 year	September
Digital Publishing	MA / PGDip / PGCert	£15,200	1 year (2 with placement†)	September
Film Studies: Popular Cinema	MA / PGDip / PGCert	£15,900	1 year	September
Fine Art	MFA / PGDip / PGCert	£15,500	1 year	September
Journalism	MA	£15,900	1 year (2 with placement†)	September
Music	MA / PGDip / PGCert	£15,900	1 year	September
Publishing	MA / PGDip / PGCert	£7,700	32 months Distance learning only	January
Publishing Media	MA/ PGDip / PGCert	£15,200	1 year (2 with placement†)	September

\*Fees quoted are for 2022-23 academic year only – please note that tuition fees may increase in subsequent years both for new and continuing students. See page 31 for more information. \*\*Duration listed is for full-time study unless otherwise specified.

†See course web page for more information regarding the placement year.

“It’s offered me the chance to work with industry professionals and develop my skills and understanding of the industry in a way I never would have been able to without this opportunity.”

RACHEL HAINS, MA JOURNALISM

# Biological and Medical Sciences

## WHY STUDY WITH US?

1. **Top quality labs and teaching spaces** including a bioimaging unit which houses advanced light and electron microscopes.
2. Our links with industry and the NHS (National Health Service) provide **high-quality work placement opportunities** and research-led teaching is geared towards developing your professional skills alongside the theory.
3. We have **links with conservation organisations and NGOs**, including Fauna and Flora International, TRAFFIC, and Conservation International.



Student practicals in one of our labs



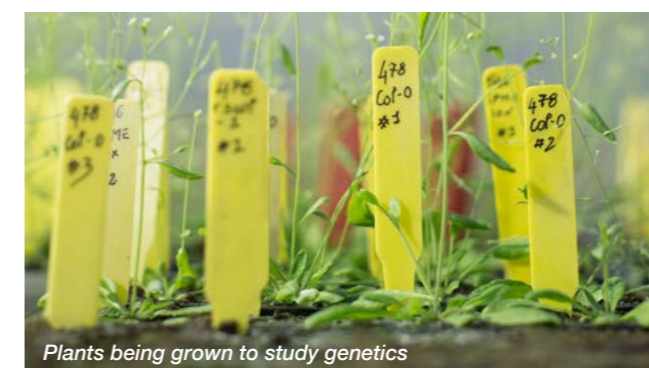
## Undergraduate courses

Course title	Qualification	Fees 2022/23*	Duration**	Start date(s)
Animal Biology and Conservation	BSc (Hons)	£15,500	3 years (4 with placement)	September
Biological Sciences	BSc (Hons)	£15,500	3 years (4 with placement)	September
Biological Sciences	MBiol	£15,500	4 years (5 with placement)	September
Biological Sciences (Genetics and Genomics)	BSc (Hons)	£15,500	3 years (4 with placement)	September
Biological Sciences (Human Biosciences)	BSc (Hons)	£15,500	3 years (4 with placement)	September
Biological Sciences (Zoology)	BSc (Hons)	£15,500	3 years (4 with placement)	September
Biomedical Science	BSc (Hons)	£15,500	3 years (4 with placement)	September
Equine Science	BSc (Hons)	£15,500	3 years (4 with placement)	September
Equine Science and Thoroughbred Management	BSc (Hons)	£15,500	4 years (including 1 year placement)	September
Medical Science	BSc (Hons)	£15,500	3 years	September
Medical Sciences (Final Year Entry)	BSc (Hons)	£15,500	1 year	September

## Postgraduate courses

Course title	Qualification	Fees 2022/23*	Duration**	Start date(s)
Conservation Ecology	MSc / PGDip / PGCert	£15,900	1 year	September
Medical Genetics and Genomics	MSc / PGDip / PGCert	£17,100	1 year	September

\*Fees quoted are for 2022-23 academic year only – please note that tuition fees may increase in subsequent years both for new and continuing students. See page 31 for more information. \*\*Duration listed is for full-time study unless otherwise specified.



Plants being grown to study genetics

“This degree has been a great chance to make a number of contacts in clinical and academic settings, which has helped further my career and led me to study for a PhD in cell biology.”

SCOTT BRIGHT, BIOMEDICAL SCIENCE GRADUATE

# Built Environment

## WHY STUDY WITH US?

1. The School is recognised as a centre for research excellence. Our staff are actively involved in professional consultancy and leading research, so **you'll benefit from teaching that is based on the latest thinking.**
2. You'll be working in labs which mimic professional environments and are designed to facilitate collaboration and design work. All labs are **equipped with state of the art software** for the development of your work.
3. The School of the Built Environment hosts its own **careers fair** dedicated to employers who operate in the built environment sector.



Students exploring Oxford



### Undergraduate courses

Course title	Qualification	Fees 2022/23*	Duration**	Start date(s)
Building Surveying	BSc (Hons)	£14,600	4 years (including 1 year work placement)	September
Built Environment Foundation	Foundation course	£14,900	1 year	September
Construction Project Management	BSc (Hons)	£14,900	4 years (including 1 year work placement)	September
Property Development and Planning	BSc (Hons)	£14,900	3 years	September
Quantity Surveying and Commercial Management	BSc (Hons)	£14,900	4 years (including 1 year work placement)	September
Real Estate	BSc (Hons)	£14,600	3 years	September
Urban Design, Planning and Development	BA (Hons)	£14,900	3 years	September

### Postgraduate courses

Course title	Qualification	Fees 2022/23*	Duration**	Start date(s)
Building Information Modelling and Management	MSc	£15,900	1 year (Sep start) / 17 months (Jan start) <i>Distance learning available</i>	September or January
Construction Project Management	MSc	£15,900	1 year (Sep start) / 17 months (Jan start) <i>Distance learning available</i>	September or January
Environmental Impact Assessment and Management	MSc	£15,900	1 year (Sep start) / 17 months (Jan start) <i>Distance learning available</i>	September or January
Historic Conservation	MSc / PGDip / PGCert	£15,800	1 year	September
Infrastructure Planning and Sustainable Development	MSc / PGDip / PGCert	£15,900	1 year (Sep start) / 17 months (Jan start) <i>Distance learning available</i>	September or January
Project Management in the Built Environment	MSc	£15,200	1 year (Sep start) / 17 months (Jan start) <i>Distance learning available</i>	September or January
Quantity Surveying and Commercial Management	MSc	£15,900	1 year (Sep start) / 17 months (Jan start) <i>Distance learning available</i>	September or January
Real Estate	MSc	£17,100	1 year (Sep start) / 18 months (Jan start) <i>Distance learning available</i>	September or January
Real Estate Investment Finance	MSc / PGDip	£9,900	18 months – 5 years <i>Distance learning only</i>	September, January, April, July
Spatial Planning	MSc	£15,900	1 year (Sep start) / 17 months (Jan start) <i>Distance learning available</i>	September or January
Urban Design	MA / PGDip / PGCert	£15,900	1 year	September

# Business and Management

## WHY STUDY WITH US?

1. You will benefit from our **strong links with prestigious and successful companies**, both locally and nationally, from IBM to BMW.
2. Work placements, student projects, visiting speakers and industry visits provide you with the **best foundation for a successful career.**
3. Our academics have worked as consultants for organisations such as the **UN, Red Bull Racing and KPMG.**



Students in a seminar



### Undergraduate courses

Course title	Qualification	Fees 2022/23*	Duration**	Start date(s)
Business and Law	BA (Hons)	£14,900	3 years (4 with placement)	September
Business and Management	BA (Hons)	£14,900	3 years (4 with placement)	September or January
Business Management (Final Year Entry)	BA (Hons)	£14,900	1 year <i>Distance learning available</i>	September or January
Business Management and Geography	BA (Hons)	£14,900	3 years (4 with placement)	September
Business Management and International Relations	BA (Hons)	£14,900	3 years (4 with placement)	September
Business, Enterprise and Entrepreneurship	BA (Hons)	£14,900	3 years (4 with placement)	September
International Business Management	BA (Hons)	£14,900	3 years (4 with placement)	September
International Business Management (Final Year Entry)	BA (Hons)	£14,900	1 year	September

### Postgraduate courses

Course title	Qualification	Fees 2022/23*	Duration**	Start date(s)
Entrepreneurship and Innovation	MSc / PGDip	£16,200	1 year	September
Human Resource Management	MSc	£16,200	1 year	September
International Business and Marketing Management	MSc	£16,200	1 year (2 with placement – only available with Sept start)	September or January
International Business and Supply Chain Management	MSc	£16,200	1 year (2 with placement)	September
International Business Management	MSc	£16,200	1 year (2 with placement – only available with Sept start)	September or January
International Business Management and Corporate Social Responsibility	MSc	£16,200	1 year	January
International Business Management and Digital Strategy	MSc	£16,200	1 year (2 with placement)	September
International Business Management and Entrepreneurship	MSc	£16,200	1 year (2 with placement – only available with Sept start)	September or January
International Business Management and Finance	MSc	£16,200	1 year (2 with placement)	September
International Management and International Relations	MSc	£16,200	1 year	September
Management	MSc	£16,200	1 year (2 with placement)	September

\*Fees quoted are for 2022-23 academic year only – please note that tuition fees may increase in subsequent years both for new and continuing students. \*\*Duration listed is for full-time study unless otherwise specified.

# Computing and Mathematics

## WHY STUDY COMPUTING WITH US?

1. **Excellent career prospects.** Our computing students have taken up work placements with companies including Accenture, BMW, the BBC and Sophos.
2. You will use **high-specification computers and networking hardware.** The industrial-standard programming languages and software environments are those used by employers.
3. You can **get involved in exciting projects** such as joining the Autonomous Vehicle Society – where you can help design the software and parts for a driverless car.

### Undergraduate courses

Course title	Qualification	Fees 2022/23*	Duration**	Start date(s)
Artificial Intelligence	BSc (Hons) / MSci	£15,500	BSc: 3 years (4 with placement) MSci: 4 years (5 with placement)	September
Computing (Final Year Entry)	BSc (Hons)	£15,500	1 year	September
Computer Science	BSc (Hons)	£15,500	3 years (4 with placement)	September
Computer Science for Cyber Security	BSc (Hons)	£15,500	3 years (4 with placement)	September
Computing Foundation	Foundation course	£15,500	1 year	September
Foundation in Mathematics	Foundation course	£14,600	1 year	September
Information Technology for Business	BSc (Hons)	£15,500	3 years (4 with placement)	September
Information Technology for Business (Final Year Entry)	BSc (Hons)	£15,500	1 year	September
Mathematics	BSc (Hons)	£14,600	3 years (4 with placement)	September

### Postgraduate courses

Course title	Qualification	Fees 2022/23*	Duration**	Start date(s)
Advanced Computer Science	MSc / PGDip / PGCert	£16,600	1 year	September
Artificial Intelligence	MSc / PGDip / PGCert	£16,600	1 year	September
Computer Science for Cyber Security	MSc / PGDip / PGCert	£16,600	1 year	September
Computing Science	MSc / PGDip / PGCert	£16,600	1 year	September
Data Analytics	MSc	£16,600	1 year	September

\*Fees quoted are for 2022-23 academic year only – please note that tuition fees may increase in subsequent years both for new and continuing students. See page 31 for more information. \*\*Duration listed is for full-time study unless otherwise specified.

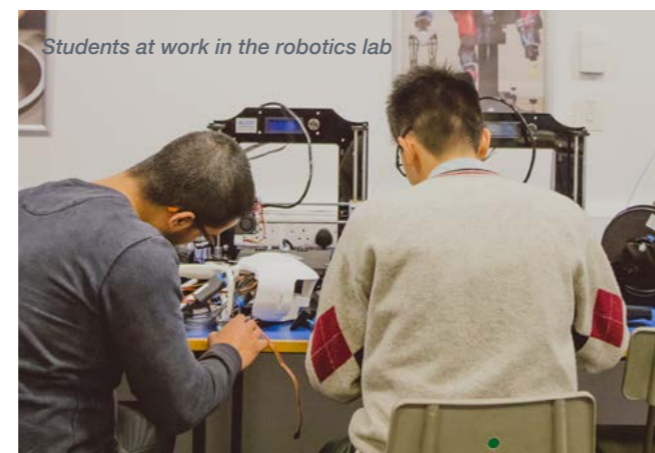


“Working in a research environment with leading academics in the field is great. You get to learn something new every day.”

KURT DEGIORGIO,  
MSc ADVANCED COMPUTER SCIENCE GRADUATE

## WHY STUDY MATHEMATICS WITH US?

1. Our courses are **grounded by strong theoretical knowledge** of mathematics.
2. You will learn **real mathematical applications** including programming, data analysis, financial mathematics and machine learning.
3. You will be part of a **welcoming and inclusive** mathematics team, where you will be supported throughout your studies.



Students at work in the robotics lab

# Education

## WHY STUDY WITH US?

1. Benefit from our **strong placement links** with local schools.
2. Gain **work experience** in Oxford's world-famous museums or at Science Oxford through our nearby partnerships.
3. Join a vibrant, **supportive academic community**, with school-experienced lecturers.



Students practising forest skills on the Outdoor Learning module

### Undergraduate courses

Course title	Qualification	Fees 2022/23*	Duration**	Start date(s)
Early Childhood Studies	BA (Hons)	£14,600	3 years	September
Early Childhood Studies (Final Year Entry)	BA (Hons)	£14,600	1 year <i>Distance learning available</i>	September
Education Studies	BA (Hons)	£14,600	3 years	September
Primary Teacher Education	BA (Hons)	£14,600	3 years	September

### Postgraduate courses

Course title	Qualification	Fees 2022/23*	Duration**	Start date(s)
Education	MA	£15,200	1 year <i>Distance learning available</i>	September
Education (Artist Teacher Practice)	MA	£1,690 per single module	3 years (part-time) <i>Distance learning available</i>	September
Education (Advanced Study in SEMH Difficulties)	PGCert	£4,940	1 year (part-time) <i>Distance learning only</i>	September
Education (Childhood and Youth Studies)	MA	£15,200	1 year <i>Distance learning available</i>	September
Education (Children's Literature)	PGCert	£1,690 per single module	1 year (part time) <i>Distance learning available</i>	September
Education (ELT Writing Materials)	PGCert	£1,690 per single module	1 year (part time) <i>Distance learning available</i>	September
Education (Leadership and Management)	MA	£15,200	1 year <i>Distance learning available</i>	September
Education (Leadership and Management)	PGCert	£1,690 per single module	1 year <i>Distance learning available</i>	September
Education (Special Educational Needs and Disability)	MA	£15,200	1 year <i>Distance learning available</i>	September
Education (Teaching Multilingual Learners)	PGCert	£1,690 per single module	1 year (part time) <i>Distance learning available</i>	September
Education (TESOL)	MA	£15,200	1 year <i>Distance learning available</i>	September
Education (Understanding and Managing SEMH Difficulties)	PGCert	£4,940	1 year (part time) <i>Distance learning only</i>	September
PGCE Primary 3-7 (with QTS)†	PGCE	£14,900	1 year	September
PGCE Primary 5-11 (with QTS)†	PGCE	£14,900	1 year	September
PGCE Post Compulsory	PGCE	£15,200	1 year	September

\*Fees quoted are for 2022-23 academic year only – please note that tuition fees may increase in subsequent years both for new and continuing students. See page 31 for more information. \*\*Duration listed is for full-time study unless otherwise specified..

†QTS=Qualified Teacher Status in the UK.



# Healthcare

## WHY STUDY WITH US?

1. Courses are **underpinned by internationally leading research** from the Oxford Institute of Nursing, Midwifery and Allied Health Research (OxINMAHR), which is based at Oxford Brookes.
2. Nursing and Midwifery students are members of the Oxford School of Nursing and Midwifery, **a unique partnership** with Oxford University Hospitals and Oxford Health NHS Foundation Trusts.
3. Our Occupational Therapy and Physiotherapy **programmes work closely with the highly regarded researchers** from the Centre for Movement, Occupational and Rehabilitation Sciences.

Healthcare student practicing skills on dummy



### Undergraduate courses

Course title	Qualification	Fees 2022/23*	Duration**	Start date(s)
Midwifery	BSc (Hons)	£15,300	3 years	September
Nursing (Adult and Mental Health)	MSci	£15,300	4 years	September
Nursing (Adult)	BSc (Hons)	£15,300	3 years	September
Nursing (Children's)	BSc (Hons)	£15,300	3 years	September
Nursing (Mental Health)	BSc (Hons)	£15,300	3 years	September
Occupational Therapy	BSc (Hons)	£16,500	3 years	September
Paramedic Science	BSc (Hons)	£15,300	3 years	September
Physiotherapy	BSc (Hons)	£16,500	3 years	September

### Postgraduate courses

Course title	Qualification	Fees 2022/23*	Duration**	Start date(s)
Health Sciences Open Award	MSc / PGDip / PGCert	£1,690 per single module	1 year <i>Distance learning available</i>	September or January
Management in Health and Social Care	MSc / PGDip / PGCert	£15,200	1 year	September or January
Midwifery – Pre-Registration	MSc	£15,200	3 years	September
Nursing (Mental Health) – Pre-Registration	MSc	£15,200	2 years	September
Nursing Studies (Leadership in Clinical Practice)	MSc / PGDip / PGCert	£1,690 per single module	Up to 5 years (part-time) <i>Distance learning only</i>	September or January
Occupational Therapy – Pre-Registration	MSc	£16,200	2 years	September
Physiotherapy – Pre-Registration	MSc	£16,200	2 years	September

\*Fees quoted are for 2022-23 academic year only – please note that tuition fees may increase in subsequent years both for new and continuing students. See page 31 for more information. \*\*Duration listed is for full-time study unless otherwise specified.



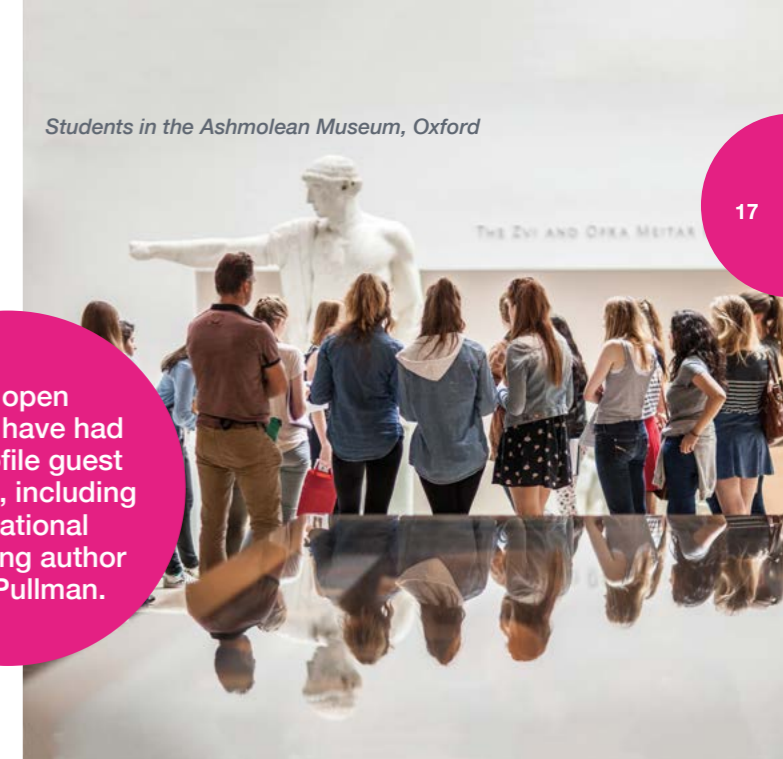
# Humanities

## WHY STUDY WITH US?

1. You'll be taught by tutors who are **active researchers**, so what you learn is shaped by the latest thinking.
2. Our courses provide the **opportunity to develop excellent employment skills** from analytical and problem solving skills to great team working and communication skills.
3. Oxford is a beautiful city full of history, literature, philosophy and culture. It is **a place to be inspired**.

Our open lectures have had high profile guest speakers, including international bestselling author Philip Pullman.

Students in the Ashmolean Museum, Oxford



### Undergraduate courses

Course title	Qualification	Fees 2022/23*	Duration**	Start date(s)
Applied Languages	BA (Hons)	£14,600	4 years	September
Communication, Media and Culture	BA (Hons)	£14,600	3 years	September
Drama, Theatre and Acting	BA (Hons)	£14,600	3 years	September
English Language and Linguistics	BA (Hons)	£14,600	3 years	September
English Literature	BA (Hons)	£14,600	3 years	September
English Literature with Creative Writing	BA (Hons)	£14,600	3 years	September
Foundation in Humanities	Foundation course	£14,600	1 year	September
History	BA (Hons)	£14,600	3 years	September
History of Art	BA (Hons)	£14,600	3 years	September
Japanese Studies	BA (Hons)	£14,600	4 years	September
Liberal Arts	BA (Hons)	£14,600	3 years	September
Philosophy	BA (Hons)	£14,600	3 years	September

### Postgraduate courses

Course title	Qualification	Fees 2022/23*	Duration**	Start date(s)
Creative Writing	MA / PGDip / PGCert	£15,200	1 year	September
English Literature	MA / PGDip / PGCert	£15,200	1 year	September
History	MA / PGDip / PGCert	£15,200	1 year	September
International Business and Intercultural Communication	MA / PGDip / PGCert	£15,700	1 year	September

\*Fees quoted are for 2022-23 academic year only – please note that tuition fees may increase in subsequent years both for new and continuing students. See page 31 for more information. \*\*Duration listed is for full-time study unless otherwise specified.

“The opportunity to take part in a field trip to Paris was something that really attracted me to the course at Oxford Brookes. I really enjoyed the insightful and frequent visits to museums and galleries that were organised as part of the course.”

VY TRAN, BA (HONS) HISTORY OF ART GRADUATE



WHY STUDY WITH US?

1. Our students are nationally recognised in mooting and client interviewing – **building essential career skills**.
2. Our teaching staff are **active researchers and experienced legal professionals**, so your learning is underpinned by the latest thinking and cutting-edge research.
3. You'll be able to **build your network** – at our Law Fair, through mentorship programmes and via pro bono work.



Moot court in Headington Hill Hall

Undergraduate courses

Course title	Qualification	Fees 2022/23*	Duration**	Start date(s)
Foundation in Law	Foundation Diploma	£14,600	1 year	September
Law	LLB (Hons)	£14,600	3 years	September
Law (Final Year Entry)	LLB (Hons)	£14,600	1 year <i>Distance learning available</i>	September
Law with Criminology	LLB (Hons)	£14,600	3 years	September
Law with Business	LLB (Hons)	£14,600	3 years	September

Postgraduate courses

Course title	Qualification	Fees 2022/23*	Duration**	Start date(s)
Commercial Law and International Trade	LLM / PGDip	£15,200	1 year	September
Human Rights Law	LLM / PGDip	£15,200	1 year	September
International Law	LLM / PGDip / PGCert	£15,200	1 year	September
Graduate Diploma in Law (GDL)	Graduate Diploma	£8,900	1 year	September
Legal Practice	LLM	£5,000	13 months (part-time) <i>Distance learning only</i>	September

\*Fees quoted are for 2022-23 academic year only – please note that tuition fees may increase in subsequent years both for new and continuing students. See page 31 for more information. \*\*Duration listed is for full-time study unless otherwise specified.



“Without this course I would not have had the opportunity to undertake an internship with the United Nations.”

STEFANO CONSIGLIO, LL.M GRADUATE



Law student in Headington Hill Hall

“A law degree from Oxford Brookes leads us London lawyers to say: well she or he must be bright as well as knowledgeable”

Lord Wilson of Culworth, Justice of the Supreme Court, 2019

Marketing, Events and Hospitality

Dr Frances Brassington, Programme Lead for undergraduate Marketing, is the co-author of *Principles of Marketing*, a leading textbook now in its fourth edition



WHY STUDY WITH US?

1. You'll have the chance to **spend a year in a paid Hospitality, Marketing, or Events work placement**. Recent placement locations include: Disney, L'Oréal, Warner Brothers, Amazon, Virgin Media, Mariot, Hilton, the Ritz and The Savoy.
2. The Oxford School of Hospitality Management is listed in the **top ten Best Hospitality and Hotel Management Schools in the World for 2021** (CEOWORLD magazine).
3. You will learn how to **critically analyse, creatively problem solve and confidently communicate complex ideas effectively**.



Undergraduate courses

Course title	Qualification	Fees 2022/23*	Duration**	Start date(s)
Business and Marketing Management	BA (Hons)	£14,900	3 years (4 with placement)	September or January
Business and Marketing Management (Final Year Entry)	BA (Hons)	£14,900	1 year (full-time)	September or January
Events Management	BA (Hons)	£14,900	3 years (4 with placement)	September
International Hospitality and Tourism Management	BSc (Hons)	£14,900	3 years (4 with placement)	September
Marketing and Events Management	BA (Hons)	£14,900	3 years (4 with placement)	September
Marketing Communications Management	BA (Hons)	£14,900	3 years (4 with placement)	September
Marketing Management	BA (Hons)	£14,900	3 years (4 with placement)	September or January

Postgraduate courses

Course title	Qualification	Fees 2022/23*	Duration**	Start date(s)
Digital Marketing	MSc	£16,200	1 year (2 with placement – only available with September start)	September or January
International Events Management	MSc	£16,200	1 year (2 with placement)	September
International Events Marketing	MSc	£16,200	1 year (2 with placement)	September
International Hospitality, Events and Tourism Management	MSc	£16,200	1 year (2 with placement)	September or January
International Hotel and Tourism Management	MSc	£16,200	1 year (2 with placement)	September or January
International Luxury Marketing	MSc	£16,200	1 year (2 with placement – only available with September start)	September or January
International Tourism Management	MSc	£16,200	1 year (2 with placement)	September
Marketing	MSc	£16,200	1 year (2 with placement – only available with September start)	September or January
Marketing and Brand Management	MSc	£16,200	1 year (2 with placement – only available with September start)	September or January
Marketing and Entrepreneurship	MSc	£16,200	1 year (2 with placement)	September
Marketing Communications Management	MSc	£16,200	1 year (2 with placement – only available with September start)	September or January
Tourism and Events Management	MSc	£16,200	1 year (2 with placement)	September

\*Fees quoted are for 2022-23 academic year only – please note that tuition fees may increase in subsequent years both for new and continuing students. See page 31 for more information. \*\*Duration listed is for full-time study unless otherwise specified.

# Mechanical Engineering and Motorsports

## WHY STUDY WITH US?

1. Our motorsport, automotive and mechanical engineering courses are **fully accredited** by the Institution of Engineering and Technology (IET) and the Institution of Mechanical Engineers (IMechE) on behalf of the Engineering Council.
2. You'll be using **industry-standard facilities** including a driving simulator and a four-post shaker rig for analysing rigid body and vehicle dynamics.
3. Students benefit from our **strong links with F1 teams**, including work placements and recruitment opportunities.



### Undergraduate courses

Course title	Qualification	Fees 2022/23*	Duration**	Start date(s)
Automotive Engineering with Electric Vehicles	BEng (Hons)	£15,500	3 years (4 with placement)	September
	MEng		4 years (5 with placement)	
Electro-Mechanical Engineering	BEng (Hons)	£15,500	3 years (4 with placement)	September
Engineering Foundation	Foundation course	£15,500	1 year	September
Mechanical Engineering	BEng (Hons)	£15,500	3 years (4 with placement)	September
	MEng		4 years (5 with placement)	
Mechanical Engineering Design	BEng	£15,500	3 years (4 with placement)	September
Motorsport Engineering	BEng (Hons)	£15,500	3 years (4 with placement)	September
	MEng		4 years (5 with placement)	
Motorsport Technology	BEng	£15,500	3 years (4 with placement)	September

### Postgraduate courses

Course title	Qualification	Fees 2022/23*	Duration**	Start date(s)
Automotive Engineering with Electric Vehicles	MSc	£16,600	1 year	September
Mechanical Engineering	MSc	£16,600	1 year	September
Motorsport Engineering	MSc	£17,100	1 year	September
Racing Engine Systems	MSc	£17,100	1 year	September

\*Fees quoted are for 2022-23 academic year only – please note that tuition fees may increase in subsequent years both for new and continuing students. See page 31 for more information. \*\*Duration listed is for full-time study unless otherwise specified.

“I chose to study at Oxford Brookes because it is at the heart of Motorsport Valley and the industry links the university has are really strong. I have also been able to be part of the university’s Formula Student team, Oxford Brookes Racing. Through this I have been able to help the team design, build and manufacture our own race car.”

MEGHANN WHATTAM, MOTORSPORT ENGINEERING STUDENT



# Psychology, Public Health and Social Work

## WHY STUDY WITH US?

1. Studying **Psychology** at Oxford Brookes provides the **opportunity to receive British Psychological Society accreditation** – the first step to becoming recognised as a chartered psychologist.
2. **Public Health** at Oxford Brookes provides **research-led and student-centred teaching**, with a focus on global health. Our graduates work in a range of health-related professions in low-, middle- and high-income countries.



### Undergraduate courses

Course title	Qualification	Fees 2022/23*	Duration**	Start date(s)
Psychology	BSc	£14,600	3 years (4 with placement)	September
Social Work	BA	£14,600	3 years	September

### Postgraduate courses

Course title	Qualification	Fees 2022/23*	Duration**	Start date(s)
Global Public Health Leadership	MPH / PGDip / PGCert	£9,800	1 year / <i>Distance learning only</i>	September or January
Psychology	MSc	£15,200	1 year	September
Public Health	MPH / PGDip / PGCert	£15,200	1 year	September or January
Social Work	MA / PGDip	£15,200	2 years	September

\*Fees quoted are for 2022-23 academic year only – please note that tuition fees may increase in subsequent years both for new and continuing students. See page 31 for more information. \*\*Duration listed is for full-time study unless otherwise specified.



“I chose Oxford Brookes because I admired the outreach work they did. My master’s at Oxford Brookes was transformative. A huge credit for this goes to the lecturers, practice educators, supervisors and fellow students.”

NABEELA TALIB, MA SOCIAL WORK GRADUATE

## WHY STUDY WITH US?

1. Our world class research has received **international recognition**, changing attitudes and informing policy across areas as diverse as the conservation of primates and gendered practices in family and work lives.
2. You'll benefit from outstanding resources. We have a **dedicated lab for analysing bone and archaeological samples** and measuring soil properties. You'll also have access to Oxford's world-class Pitt Rivers and Ashmolean museums.
3. We have **links with conservation organisations and NGOs**, including Fauna and Flora International, TRAFFIC, and Conservation International.

Students on the Jack the Ripper tour



### Undergraduate courses

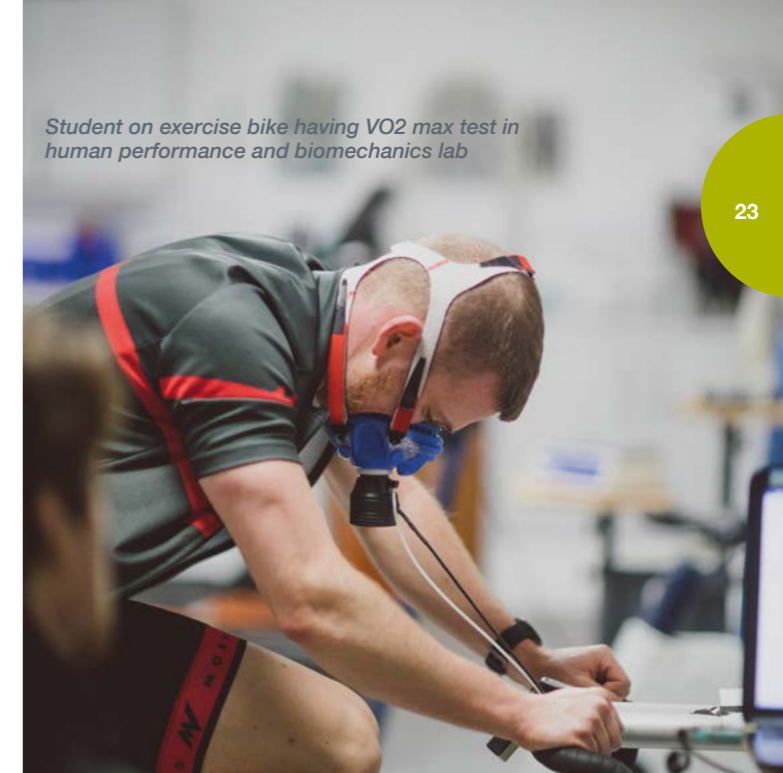
Course title	Qualification	Fees 2022/23*	Duration**	Start date(s)
Anthropology	BSc (Hons)	£14,600	3 years	September
Criminology	BSc (Hons)	£14,600	3 years	September
Criminology and Law	BSc (Hons)	£14,600	3 years	September
Geography	BSc (Hons)	£14,600	3 years	September
International Relations	BA or BSc (Hons)	£14,600	3 years / <i>Combined honours only</i>	September
International Relations and Politics	BA (Hons)	£14,600	3 years	September
Politics	BA (Hons)	£14,600	3 years / <i>Combined honours only</i>	September
Social Anthropology	BA (Hons)	£14,600	3 years	September
Sociology	BA (Hons)	£14,600	3 years	September

### Postgraduate courses

Course title	Qualification	Fees 2022/23*	Duration**	Start date(s)
Anthropology	Graduate Diploma	£15,200	9 months	September or January
International Security	MA / PGDip / PGCert	£15,700	1 year	September
International Relations	MA / PGDip / PGCert	£15,700	1 year	September
International Relations (Distance Learning)	MA / PGDip / PGCert	£7,850	1 year / <i>Distance learning only</i>	September
Primate Conservation	MSc / PGDip / PGCert	£15,700	1 year	September
Primate Conservation (Apes in the Anthropocene)	MSc / PGDip / PGCert	£15,700	1 year	September
Primate Conservation (Human Primate Interface)	MSc / PGDip / PGCert	£15,700	1 year	September
Primate Conservation (Lemurs and Nocturnal Primates)	MSc / PGDip / PGCert	£15,700	1 year	September
Primate Conservation and Conservation	MRes / PGCert	£15,200	1 year	September

\*Fees quoted are for 2022-23 academic year only – please note that tuition fees may increase in subsequent years both for new and continuing students. See page 31 for more information. \*\*Duration listed is for full-time study unless otherwise specified.

Student on exercise bike having VO2 max test in human performance and biomechanics lab



## WHY STUDY WITH US?

1. Sport and Coaching Sciences staff **work in elite sport and lead international initiatives**.
2. Nutrition academics are **affiliated with the Oxford Brookes Centre for Nutrition and Health** with the research they carry out informing nutrition teaching.
3. Students **engage in active research carried out by our academics**. Current projects include physical activity, injury prevention, cancer, nutrition, physiology, coaching and performance analysis.
4. Our degrees are **accredited by the relevant professional bodies**.

### Undergraduate courses

Course title	Qualification	Fees 2022/23*	Duration**	Start date(s)
Nutrition	BSc	£15,500	3 years	September
Nutrition Science (Final Year Entry)	BSc	£15,500	1 year <i>Distance learning available</i>	September
Physical Activity and Health Promotion	BSc	£15,500	3 years	September
Sport and Exercise Science	BSc	£15,500	3 years	September
Sport, Coaching and Physical Education	BSc	£14,600	3 years	September

### Postgraduate courses

Course title	Qualification	Fees 2022/23*	Duration**	Start date(s)
Applied Coaching Science	MSc	£8,100	2 years (part-time)	September
Applied Human Nutrition	MSc / PGDip / PGCert	£15,900	1 year	September
Applied Sport and Exercise Nutrition	MSc / PGDip / PGCert	£15,700	1 year	September

\*Fees quoted are for 2022-23 academic year only – please note that tuition fees may increase in subsequent years both for new and continuing students. See page 31 for more information. \*\*Duration listed is for full-time study unless otherwise specified.



# Pathways courses

## PRE-SESSIONAL ENGLISH

Our pre-sessional English courses **help you meet the language requirements of your degree**, and can be combined with other foundation courses and pre-masters courses.

Pre-sessional English is taught in 6-12 week blocks at four different levels. You can take consecutive course blocks until you reach the level required for your degree course.

The tables below show approximately how long you need to study depending on your current and required language level.

### Undergraduate courses

If you need IELTS 6.0 with 6.0 in reading and writing, 5.5 in speaking and listening (required for most undergraduate courses):

Current IELTS level	Duration	Start date(s)
4.5 with at least 4.0 in all skills	24 weeks (over 2 semesters)	September
5.0 with at least 4.5 in all skills	12 weeks (over 1 semester)	September, January or June
5.5 with at least 5.0 in all skills	12 or 6 weeks	June or July
6.0 with at least 5.5 in all skills	6 week course	July

Course fees vary depending on entry point and length of course. Please see our website for more information.

Find out more at [www.brookes.ac.uk/international/pre-sessional](http://www.brookes.ac.uk/international/pre-sessional)



Find out more at [www.brookes.ac.uk/international/foundation](http://www.brookes.ac.uk/international/foundation)

### Postgraduate courses

If you need IELTS 6.0 with 6.0 in reading and writing, 5.5 in speaking and listening (required for most postgraduate business courses):

Current IELTS level	Duration	Start date(s)
4.5 with at least 4.0 in all skills	36 weeks (over 3 semesters)	September
5.0 with at least 4.5 in all skills	24 weeks (over 2 semesters)	September or January
5.5 with at least 5.0 in all skills	12 weeks (over 1 semester)	September, January or June
6.0 with at least 5.5 in all skills	12 or 6 weeks	September, January, June or July
6.5 with at least 5.5 in all skills	6 week course	June or July



## INTERNATIONAL FOUNDATION COURSES

If you do not meet the minimum academic requirements for our undergraduate courses, you may still be able to apply for one of our international foundation courses.

Our foundation courses provide a bridge between school study in your home country and undergraduate study and offer a guaranteed pathway to an undergraduate degree if you pass with required grades.

Course	Duration**	Start date(s)	Fees 2022/23*	IELTS required
International Foundation Diploma	24 weeks	September or January	£13,900	5.0 (5.0 in each skill)
International Foundation Diploma (extended pathway)	1 year (includes a semester of pre-sessional English)	September	£18,000	4.5 (4.0 in each skill)
International Foundation – Business and Technology	4 years (foundation integrated with undergraduate degree)	September or January	£13,900	5.5 (5.5 in each skill)
International Foundation – Arts, Humanities and Law	4 years (foundation integrated with undergraduate degree)	September or January	£13,900	5.5 (5.5 in each skill)

\*Fees quoted are for 2022-23 academic year only – please note that tuition fees may increase in subsequent years both for new and continuing students. See page 31 for more information. \*\*Duration listed is for full-time study unless otherwise specified.



“The international foundation is a really good course because of the mix of a lot of nationalities, making it easier to make friends and get settled in.”

WILLIAM CESSFORD – SWEDEN, INTERNATIONAL FOUNDATION COURSE FOLLOWED BY BSc (HONS) BUSINESS AND MARKETING MANAGEMENT

### WHY CHOOSE AN INTERNATIONAL FOUNDATION COURSE AT OXFORD BROOKES?

- You are guaranteed to progress to the first year of a bachelor's degree by passing your foundation year with the required grades.
- Our core class sizes are kept small so you will get the attention you need.
- You will study and become friends with people from all over the world, making your time on your course unforgettable.

To view our full range of foundation courses, please visit [www.brookes.ac.uk/studying-at-brookes/courses/foundation-courses/](http://www.brookes.ac.uk/studying-at-brookes/courses/foundation-courses/)

## PRE-MASTER'S COURSES

If you do not meet the minimum academic requirements for our postgraduate courses, you may still be able to apply for one of our pre-master's programmes.

These courses are designed to develop your subject knowledge, study skills and academic language level in preparation for your master's degree. You can choose from one or two semesters depending on your needs.

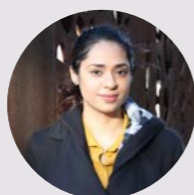


Course	Duration**	Start date(s)	Fees 2022/23*	IELTS required
Pre-Master's Certificate: Study Skills	1 semester	January	£6,400	7.0 (6.5 in all skills) or native/near-native speaker
Pre-Master's Certificate: English Language and Study Skills	1 semester	September, January or May	£6,400	6.0 (6.0 in reading and writing and 5.5 in other skills)
Pre-Master's Diploma	2 semesters	September or January	£12,800	5.5 (5.5 in each skill)
Two-Year Master's Degree	2 years (Pre-master's followed by master's degree)	September or January	£12,800 (first year only)	5.5 (5.5 in each skill)

\*Fees quoted are for 2022-23 academic year only – please note that tuition fees may increase in subsequent years both for new and continuing students. See page 31 for more information. \*\*Duration listed is for full-time study unless otherwise specified.

### WHY CHOOSE A PRE-MASTER'S COURSE AT OXFORD BROOKES?

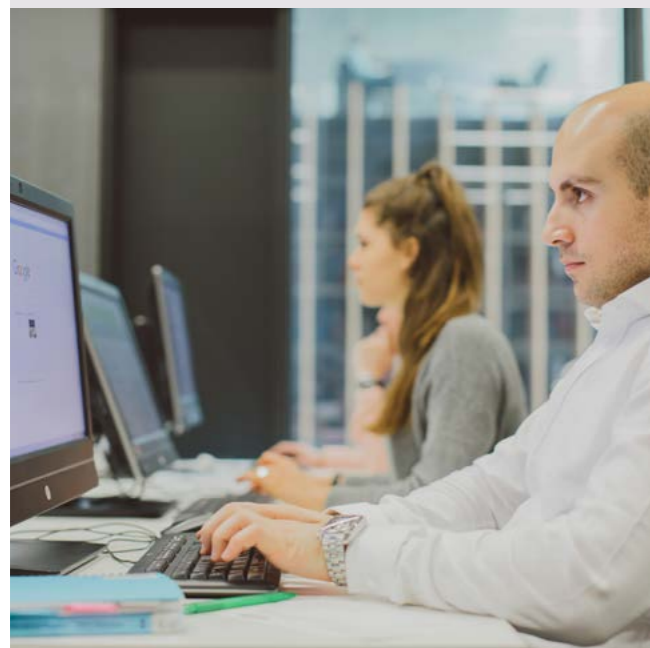
- Once you enrol you will have a guaranteed pathway to your master's by passing with appropriate grades.
- Study from just 12-24 weeks depending on your needs.
- You will have a personal academic adviser to support your studies and help you make the right decisions in your course.



**“The pre-master’s course equipped me with the skills required at masters level... Had I not taken the pre-master’s course, I would have struggled at master’s level with referencing and understanding the different formats required to write different types of work such as statistical reports, research reports and mini dissertations... Studying at Oxford Brookes has definitely surpassed my expectations in every regard.”**

AFIA BHATTI, GRADUATE OF PRE-MASTER'S FOLLOWED BY MSc FINANCE

Find out more at [www.brookes.ac.uk/international/premasters](http://www.brookes.ac.uk/international/premasters)



## Research degrees

Research at Oxford Brookes enjoys an international reputation, attracting high-quality staff and students as well as major funded projects.

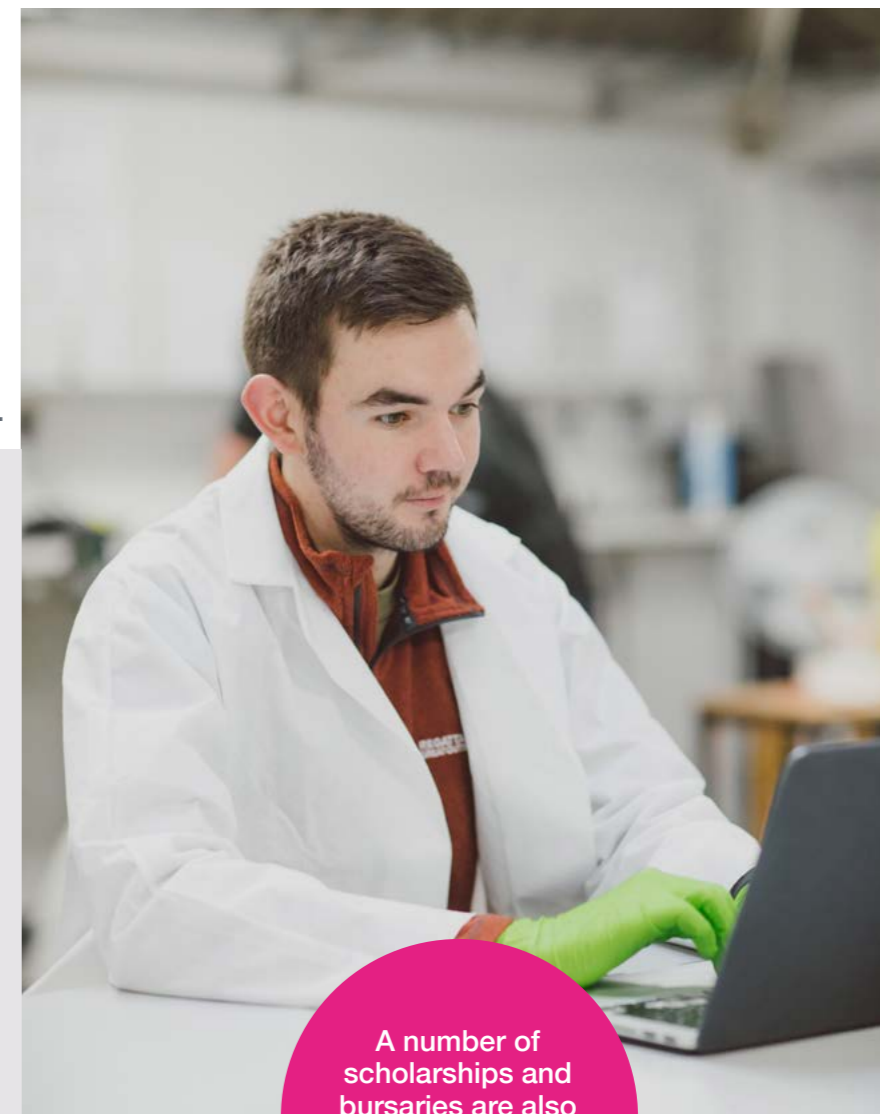
A research degree from Oxford Brookes will help you develop your skills and discover new concepts, while also adding to the knowledge base of the academic community.

As a research student you will join a vibrant and supportive environment and benefit from expert supervision. You will also have access to a strong programme of research training led centrally by the Oxford Brookes Graduate College, and in each faculty through their Doctoral Training Programmes. Together they organise research methodology courses and seminars, careers planning and advice.

Each of our academic departments and schools is engaged in a diverse range of research activities and much of our research is carried out within our research centres, many of which have built national and international reputations, such as the Oxford Institute for Sustainable Development and Centre for Movement, Occupational and Rehabilitation Sciences.

For a full list of research areas within each school and department, please visit the departmental pages on our website:

[www.brookes.ac.uk/studying/research](http://www.brookes.ac.uk/studying/research)



A number of scholarships and bursaries are also available: [www.brookes.ac.uk/studentships](http://www.brookes.ac.uk/studentships)

**“The research training that’s offered at Oxford Brookes is very comprehensive. I attended many workshops and seminars in my first year.”**

PARVATI PERMAN-HOWE, DEPARTMENT OF BIOLOGICAL AND MEDICAL SCIENCES

**94%** of our research is internationally recognised.

*(Research Excellence Framework 2014)*

**41%** increase in research funding following REF 2014.

**59%** of our research is world leading or internationally excellent.

*(Research Excellence Framework 2014)*

# How to apply

We welcome applicants from all countries with a wide range of international qualifications. We are happy to look into all applications on an individual basis because if you are interested in coming to Oxford Brookes then we are interested in finding out about you.



## UNDERGRADUATE COURSES

You can apply in two ways:

1. Apply directly:  
[www.brookes.ac.uk/apply-direct](http://www.brookes.ac.uk/apply-direct)
2. Apply via UCAS, using the institution code OXFD 066:  
[www.ucas.com/apply](http://www.ucas.com/apply)

International applications for September 2022 will be accepted **until 30 June 2022**.

Please check our website for application deadlines for courses starting in January.

## POSTGRADUATE COURSES

You should **apply directly** to the university, if you are applying for a:

- taught master's degree
- postgraduate diploma or certificate
- professional course.

Apply direct: [www.brookes.ac.uk/apply-direct](http://www.brookes.ac.uk/apply-direct)

Most courses are open to applications throughout the year. You should submit your application as early as possible as some courses fill up quickly.

## POSTGRADUATE RESEARCH COURSES

You should **apply directly** for postgraduate research courses. You will need to contact the relevant postgraduate research tutor to discuss your proposal informally before you apply.

Find out more: [www.brookes.ac.uk/researchdegrees](http://www.brookes.ac.uk/researchdegrees)

## INTERNATIONAL PATHWAYS COURSES

For pre-session English, International Foundation Diplomas and pre-master's courses, you should **apply directly** to Oxford Brookes: [www.brookes.ac.uk/apply-direct](http://www.brookes.ac.uk/apply-direct)

## WHAT WILL I NEED TO SUBMIT?

- Application form
- Transcripts
- Personal Statement
- References

For more advice on your application, please contact our admissions team:

✉ [admissions@brookes.ac.uk](mailto:admissions@brookes.ac.uk)  
☎ +44 (0) 1865 483040



# Help with your application

## CONTACTS IN YOUR COUNTRY

We work with representatives and organisations all over the world who can advise you on study options at Oxford Brookes and help you to apply.

We also have a team of officers who are here to help you, please see the list below and get in touch for more information on studying with us.



### CHINA

Ina Fang, based in Beijing, China  
✉ [ina.fang@cbbc.org](mailto:ina.fang@cbbc.org)  
☎ +86 13701244859  
☎ inafang  
QQ: 821136545



### MIDDLE EAST AND NORTH AFRICA

Andrew Reader  
Based in Oxford, UK  
✉ [areader@brookes.ac.uk](mailto:areader@brookes.ac.uk)  
☎ +44 (0) 7552 339417



### CHINA

Iva Yu  
Based in Oxford, UK  
✉ [xyu@brookes.ac.uk](mailto:xyu@brookes.ac.uk)  
☎ +44 (0) 1865 484873



### JAPAN, SOUTH KOREA, TAIWAN, VIETNAM, HONG KONG

Rachel Jones  
Based in Oxford, UK  
✉ [racheljones@brookes.ac.uk](mailto:racheljones@brookes.ac.uk)  
☎ +44 (0) 7827 853956



### CENTRAL ASIA AND SOUTH AMERICA

Alexandra Sena, based in Oxford, UK  
✉ [asena@brookes.ac.uk](mailto:asena@brookes.ac.uk)  
☎ +44 (0) 7471 630194



### EUROPE

Lucy Norris  
Based in Oxford, UK  
✉ [lnorris@brookes.ac.uk](mailto:lnorris@brookes.ac.uk)  
☎ +44 (0) 7825 318558  
Skype: lnorris-brookes



### SUB-SAHARAN AFRICA

Patrick Chukwuma  
Based in Abuja, Nigeria  
✉ [africa@brookes.ac.uk](mailto:africa@brookes.ac.uk)  
☎ +2349061465917



### NORTH AND CENTRAL AMERICA

Siobhan Frank  
Based in Oxford, UK  
✉ [sfrank@brookes.ac.uk](mailto:sfrank@brookes.ac.uk)  
☎ +44 (0) 7780 126913



### INDIA, SRI LANKA AND BANGLADESH

South Asia Team:  
Gaurav Sharma, Suyoga Joshi, Pomil Preet  
Offices in Chandigarh and Pune, India  
✉ [indiaoffice@brookes.ac.uk](mailto:indiaoffice@brookes.ac.uk)  
☎ +91 991 5244466



### MALAYSIA, THAILAND, INDONESIA, SINGAPORE, UK-BASED INTERNATIONAL STUDENTS

Leonie Liu, based in Oxford, UK  
✉ [leonieliu@brookes.ac.uk](mailto:leonieliu@brookes.ac.uk)  
☎ +44 (0) 7760 270854

Visit our website to find your nearest representative:  
[www.brookes.ac.uk/international/country](http://www.brookes.ac.uk/international/country)

## After applying: what to do next

### 1. ACCEPT YOUR OFFER

#### Conditions of acceptance

It is important that you read these before accepting a place at Oxford Brookes University. You can find them on our website:

[www.brookes.ac.uk/acceptance](http://www.brookes.ac.uk/acceptance)

#### For direct applications

If you applied directly to the University, all information about your offer will be sent to you by our admissions team. To reply to your offer and accept your place you will need to reply directly to the University by the deadline given.

#### For UCAS applications

Once every university that you have applied to has made their decision, UCAS will ask you to choose your 'firm acceptance' (your first choice) and your 'insurance acceptance' (your second or back-up choice).

You must make your decision by the deadline UCAS gives you, otherwise your offers will be declined automatically.

### 2. PAY YOUR DEPOSIT

All international students will need to pay a deposit between £3,000 and £8,000 to secure their place at Oxford Brookes, or provide evidence of financial sponsorship by an Oxford Brookes approved sponsor.

Even if you have indicated the acceptance of your place through our portal or through UCAS, you will still need to pay your deposit in order to secure it.

Find out more about how to pay your deposit:

[www.brookes.ac.uk/international/applying-to-arriving/next-steps/pay-your-deposit](http://www.brookes.ac.uk/international/applying-to-arriving/next-steps/pay-your-deposit)



### 3. APPLY FOR ACCOMMODATION

You will be able to apply for a place in our halls of residence once you have accepted your offer. You will be sent an email from our Accommodation Bureau, inviting you to apply.

If you are starting a course in September, we will send you your invitation after you have accepted your offer and you will need to apply by late July. If you are starting in January, we will send you your invitation to apply in November and you will need to apply by mid-December.

Find out more: [www.brookes.ac.uk/accommodation](http://www.brookes.ac.uk/accommodation)

### 4. MEET YOUR CONDITIONS

Most applicants will receive a conditional offer. This means that we would like to offer you a place on your chosen course, but we do not yet have sufficient information from you to confirm that place. Your offer letter will clearly state the conditions of your offer.

Once you have met any of the conditions for your course, you should send proof immediately to the Admissions Office. Direct applicants can upload their evidence directly to their portal.

When you have met all the conditions of your offer you will receive an unconditional offer and your place at Oxford Brookes University is guaranteed.

### 5. APPLY FOR YOUR VISA

We will email a Visa Information Form to any students whose nationality is not British, to find out whether you will need a Student visa or whether you already have a visa which allows you to study in the UK.

If you need a Student visa, you will need a Confirmation of Acceptance for Studies (CAS) and we may email you for further documents.

For more information about visas and immigration, please visit our website: [www.brookes.ac.uk/students/isat/visas](http://www.brookes.ac.uk/students/isat/visas)

Find out more about the application process at [www.brookes.ac.uk/international/applicant](http://www.brookes.ac.uk/international/applicant)

## Fees and funding

### TUITION FEES

#### How much will my course cost?

Our tuition fees for international students are set annually and the cost depends on the course you study.

You can find the most up-to-date fee information for each course on our website:

[www.brookes.ac.uk/international/finance](http://www.brookes.ac.uk/international/finance)

Please note:

- Fees are quoted for full-time study unless specified otherwise.
- Quoted fees do not include the cost of placement year, please see our website for that information.
- Please be aware that some courses will involve some other additional costs that are not covered by your fees.

#### Paying your fees

Before your course starts you will receive information on how and when to pay your fees. For some courses you can pay in two instalments. All international students will need to pay a deposit, please check the website and your offer letter for details.

For more information, contact our Student Finance team:

☎ +44 (0)1865 483088

✉ [financefees@brookes.ac.uk](mailto:financefees@brookes.ac.uk)

### FUNDING AND SCHOLARSHIPS

There is financial support available to help you pay tuition fees and living costs including student loans, grants and discount schemes. We also offer a range of scholarships to help our international students with the costs of studying at Oxford Brookes.

Find out more at

[www.brookes.ac.uk/internationalscholarships](http://www.brookes.ac.uk/internationalscholarships)



### LIVING COSTS

The amount of money you will need for living costs will depend on your course and individual level of spending. The UK Visas and Immigration service recommends you have at least £1,023 per month for living costs when studying outside of London.

Living costs will vary significantly from student to student, so you should think realistically about what you spend. Postgraduate research students may also need an extra £600-£1,000 for expenses such as thesis presentations, travel and equipment for research.





# University accommodation

A place you can call home! We offer a range of accommodation to suit different needs and budgets. Our halls offer a safe and friendly place to live, helping you to make new friends, and develop your independence whilst you study.



## Beech House

800 metres from Headington Campus  
167 study bedrooms

- en suite
- 42 week contract
- £203.95 per week
- £8,565.90 per year



## Cheney Student Village

Next to Headington Campus  
750 study bedrooms

- en suite
- 50 week contract
- £156.03 per week
- £7,779.21 per year



## Clive Booth Student Village – en suite

450 metres from Headington Campus, 792 study bedrooms

- en suite
- family flats also available
- 38 week contract
- from £168.56 per week
- from £6,381.20 per year



## Clive Booth Postgraduate Centre

450 metres from Headington Campus, 364 study bedrooms

- en suite
- 38 or 50 week contract
- from £172.06 per week
- from £6,513.70 per year (38 weeks)
- from £8,578.42 per year (50 weeks)



## Crescent Hall

3km from Headington Campus, 306 study bedrooms

- 38 week contract
- £119.00 per week
- £4,505 per year



## Dorset House

800 metres from Headington Campus, 259 study bedrooms

- en suite
- 42 week contract
- £196.00 per week
- £8,232 per year



## Harcourt Hill Hall

Harcourt Hill Campus

- shared bathrooms
- 38 week contract
- £92.05 per week
- £3,484.75 per year



## Parade Green

2.5km from Headington Campus, 887 study bedrooms

- en suite
- 38 week contract
- £166.71 per week
- £6,334.98 per year



## Paul Kent Hall

2.5km from Headington Campus, 242 study bedrooms

- en suite
- 38 week contract
- from £160.02 per week
- £6,057.90 per year



## Sinnet Court

1.1km to Headington Campus  
30 study bedrooms

- en suite
- 50 week contract
- £150.59 per week
- £7,529.50 per year



## Warneford Hall

Next to Headington campus  
249 study bedrooms

- shared bathrooms
- 38 week contract
- single-semester contract for incoming exchange students
- £143.01 per week
- £5,413.95 per year



## Westminster Hall

Harcourt Hill Campus  
262 study bedrooms

- en suite
- 38 week contract
- from £169.05 per week
- from £6,399.75 per year
- studio flats also available

As an international student, **we guarantee that all full-time first-year international students will be offered accommodation** as long as you apply by the deadline and meet the academic criteria for your offer.

**All halls are on a BROOKESbus route** and students living in halls can purchase a discounted bus pass entitling you to free travel on these services.

To make budgeting easier, utility bills are included in the price.

Costs shown are for 2021/22 only. Costs for 2022/23 will be listed on our website:

[www.brookes.ac.uk/accommodation](http://www.brookes.ac.uk/accommodation)

All information relating to student accommodation is correct at the time of printing. This information may be subject to change so please view the University website for the latest information.



Visit our website for the latest information and to view virtual tours of our accommodation: [www.brookes.ac.uk/accommodation](http://www.brookes.ac.uk/accommodation)

# Preparing you for your career

An Oxford Brookes degree is not just an inspirational learning experience, it will also help you become internationally employable. From real-life projects and work experience to transferable skills, we give you everything you need to help you pursue your chosen career path.



“Being a part of the best Formula Student team of the UK adds a different level of experience because in this racing team, we learn, design, justify and manufacture the race car. Therefore, having this experience really gives us a head start for the future.”

**SYED RAFNAN IBNE REZWAN, BANGLADESH, MSc MOTORSPORT ENGINEERING, STUDENT**



*Student on placement at BMW Group at the Mini Plant in Oxford*

**Our partnerships with industry, business and professions** mean there are excellent opportunities for high-quality work placements – great for building your confidence and experience. We also work with smaller local employers creating paid internship opportunities.

For some courses we team you up with your own mentor from industry. These mentors provide one-to-one advice and career guidance.

Many of our lecturers have industry and professional experience. By maintaining these links with industry, knowledge is always applied to real-world practice.



## Career services

Our Careers Service team is here to help you from day one. They can offer guidance throughout your degree. Here are a few things they can help with:

- practical advice on writing a CV, completing job applications and interview skills
- one-to-one drop in sessions with careers coaches
- an online vacancy service
- career fairs and employer events
- a programme of workshops for future leaders
- tailored workshops for research students
- a specialist careers coach for international and EU students
- continuing professional development advice once you have graduated.

Find out more at [www.brookes.ac.uk/careers](http://www.brookes.ac.uk/careers)

Our students have secured work placements with world-famous brands such as:

- Apple
- BMW Mini
- Deloitte
- Ernst & Young
- Great Ormond Street Hospital
- F1 Ferrari
- HarperCollins
- IBM
- KPMG
- Lloyds Banking Group
- Microsoft
- Oxfam
- Oxford University Hospitals NHS Foundation Trust
- Sony
- Warner Bros
- Williams Advanced Engineering.



*Student on placement as a laboratory technician at UK Biocentre in Milton Keynes*



Find out more in our video series

# Supporting your student journey

Starting university is exciting but also a time of great change. You may well be living independently for the first time and learning to balance your new lifestyle with your studies, so we've made it as easy as possible for you to access a wide range of support and advice.

### International Student Advice Team (ISAT)

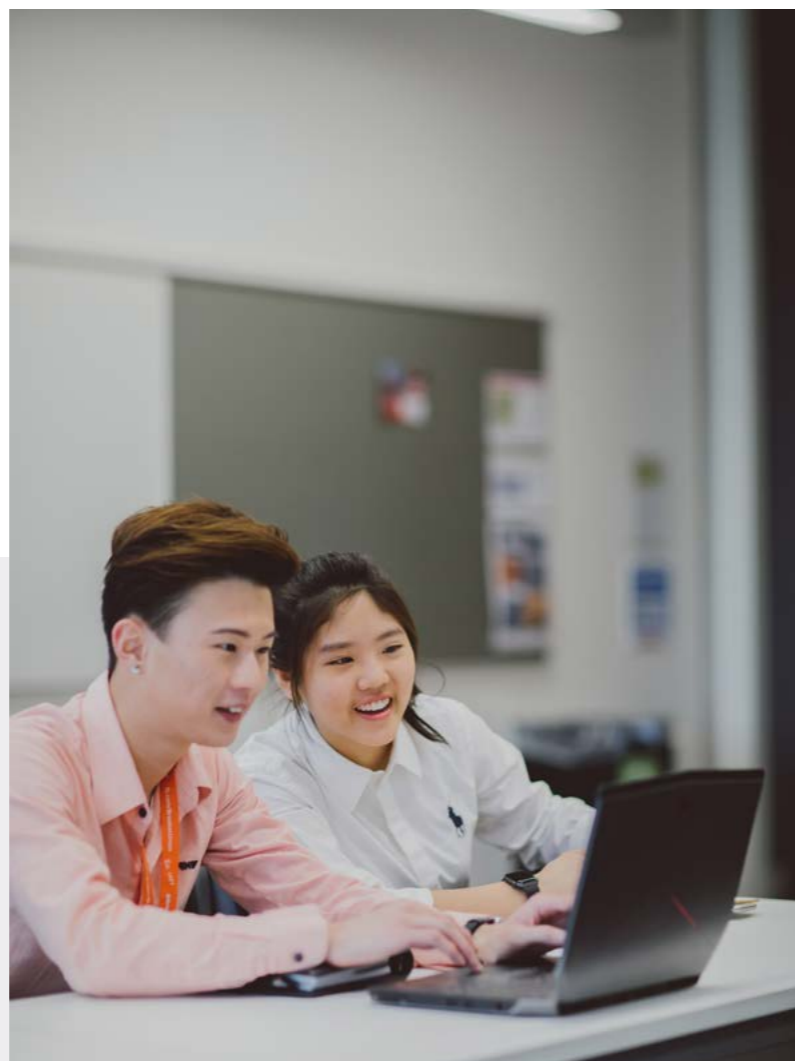
Our specialist team for international students can advise you on visas and immigration before you arrive here and throughout your time at Oxford Brookes. The team organises social events for international students including a welcome programme and day trips to UK cities and famous places.

Our Global Buddies programme provides a friendly welcome for international students, putting you in touch with current UK students to help you settle into Oxford life.

✉ [isat@brookes.ac.uk](mailto:isat@brookes.ac.uk)

☎ +44 (0) 2031 074490

[www.brookes.ac.uk/students/isat](http://www.brookes.ac.uk/students/isat)



“Reach out for support, because you will be given it and it won't be in a way that's overbearing or confusing. It's just straightforward and simple, which is really, really nice.”

ASTON POLLINGTON, USA, INTERNATIONAL FOUNDATION DIPLOMA FOLLOWED BY LLB LAW

### Wellbeing service

Delivered by a team of friendly, professional support staff, our Wellbeing Service offers a range of confidential services, with specialists on hand to provide advice and encouragement on:

- learning support
- specialist mentoring
- medical issues
- disability support
- equality, diversity and inclusion
- spiritual issues
- childcare
- mental and emotional wellbeing.

[www.brookes.ac.uk/students/wellbeing](http://www.brookes.ac.uk/students/wellbeing)

### Other support services

**Personal academic adviser** – a member of teaching staff providing academic support throughout the duration of your course.

**Student support co-ordinators** – based in each subject area, they are the first person to go to for support with personal issues or concerns with your studies.

**Medical Centre and NHS dental clinic** – based on Headington Campus. Other campuses have local doctors' surgeries nearby.

**Academic English support** – a range of options to help you develop the academic language skills you need for your degree.

**The Centre for Academic Development** – offers dedicated support in study skills, academic language and communication, and maths and statistics.

# Sport

From American football to Zumba, Brookes Sport offers plenty of opportunities to get active, compete, or simply make friends!

### Supporting performance

On the competitive side #TEAMBrookes has a huge range of sports clubs you can join. Wednesdays are the sporting highlight of the week – teams travel across the country and host fixtures across Oxford as part of British Universities and Colleges Sport (BUCS) competition.

[www.brookes.ac.uk/brookes-sport](http://www.brookes.ac.uk/brookes-sport)

### Facilities

With excellent facilities and equipment we offer something for everyone, including:

- Oxfordshire's premier climbing wall
- group exercise and wellness classes
- recreational sport and activities
- a swimming pool, boathouse, courts, pitches, sports bar and more.



We are ranked among the best university rowing programmes in the world (BUCS)

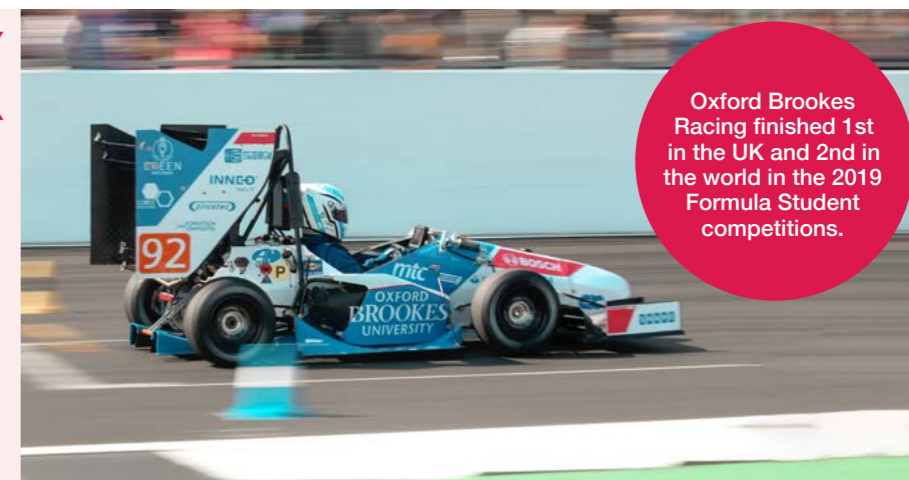


We compete in 33 BUCs sports at both a regional and national level



### FORMULA STUDENT TEAM

Oxford Brookes Racing (OBR), the award-winning Formula Student team from Oxford Brookes University, is open to any Oxford Brookes students wanting to get involved. It doesn't make a difference what year you're in, or even what you're studying – it doesn't need to be engineering! If you're passionate about racing you can get involved!

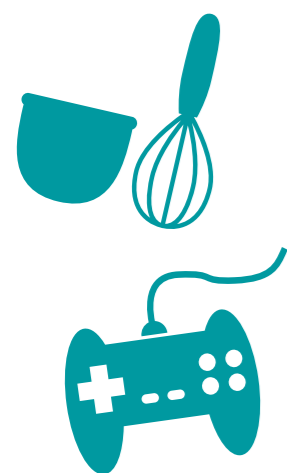


Oxford Brookes Racing finished 1st in the UK and 2nd in the world in the 2019 Formula Student competitions.

# BROOKES UNION: HERE FOR YOU

Run by students for students, we represent the student voice so that you can get on and make the most of your time at Oxford Brookes.

Find out more at [brookesunion.org.uk](http://brookesunion.org.uk)



## BELONG

We have

**over 100 student-led societies.**

Societies are a great way to make new friends and try new things.

**BROOKES UNION**  
Est. 1921



## SAFETY FIRST

We run the Safe Taxi scheme to help students get home safely if they don't have the cash to do so. We also run personal safety campaigns and last year handed out **over 1,000 personal safety alarms.**



## FIGHTING YOUR CORNER

Our independent advice team supports students on housing matters, academic issues, student finance and more.

In 2019/20, we advised

**4,500+ students**

with

**£840,000+**

recovered for students!

## STRESS LESS

We help support students with their mental health and wellbeing; whether that's by running our Stress Less Week, packed full with activities including yoga, mindfulness and crafts, or by campaigning to improve student wellbeing services.



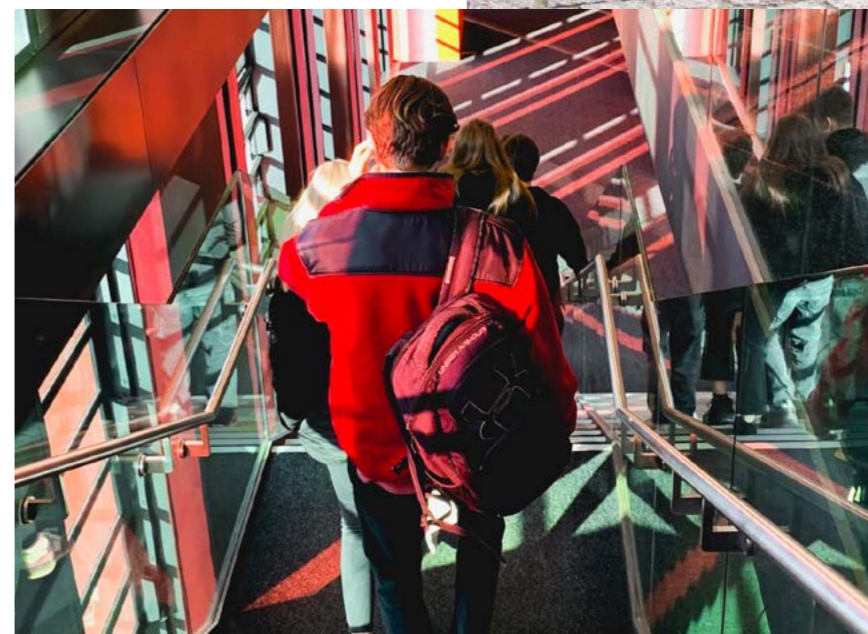
## Get in touch

**JOIN AN OPEN DAY**  
[www.brookes.ac.uk/openday](http://www.brookes.ac.uk/openday)

**BOOK A CAMPUS TOUR**  
[www.brookes.ac.uk/campustour](http://www.brookes.ac.uk/campustour)

**CHAT TO A STUDENT AMBASSADOR**  
[www.brookes.ac.uk/ambassadorchat](http://www.brookes.ac.uk/ambassadorchat)

**MEET US IN YOUR COUNTRY**  
[www.brookes.ac.uk/international/country](http://www.brookes.ac.uk/international/country)



"When I came to visit Oxford, I'd never been there before and I immediately fell in love with the city and the campus."

YASMIN ARNOULD, BELGIUM,  
BA (HONS) MEDIA, JOURNALISM  
AND PUBLISHING

## GENERAL ENQUIRIES

Ask us a question at  
[www.brookes.ac.uk/askaquestion](http://www.brookes.ac.uk/askaquestion)

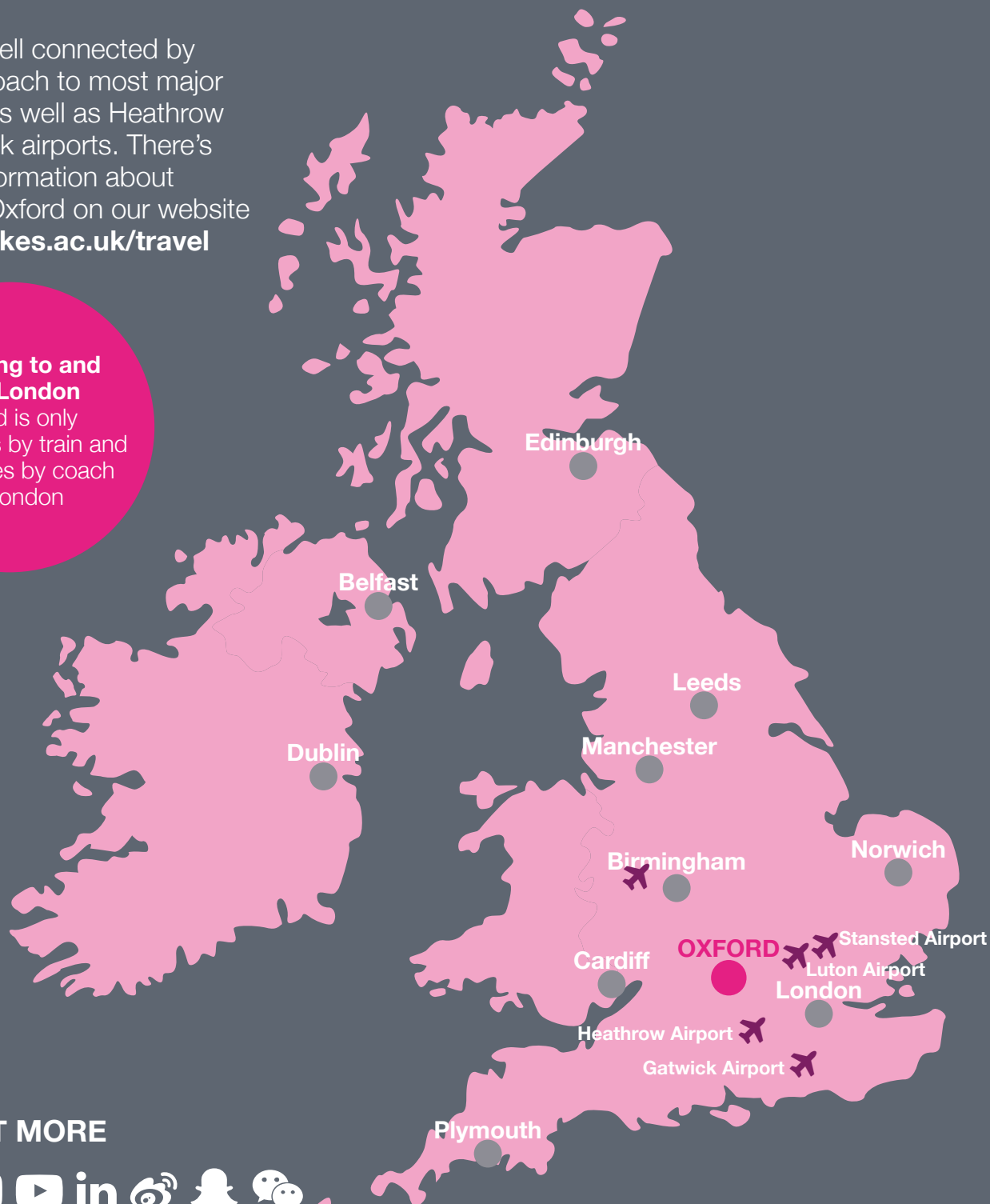


# How to find us

Oxford is well connected by train and coach to most major UK cities, as well as Heathrow and Gatwick airports. There's detailed information about getting to Oxford on our website [www.brookes.ac.uk/travel](http://www.brookes.ac.uk/travel)

## Travelling to and from London

Oxford is only 60 minutes by train and 80 minutes by coach to London



FIND OUT MORE



[www.brookes.ac.uk/international](http://www.brookes.ac.uk/international)



To enquire about other formats, please call our enquiry centre on **+44 (0) 1865 484848** or get in touch at [www.brookes.ac.uk/askaquestion](http://www.brookes.ac.uk/askaquestion)