

International Year One in Engineering



International Year One in Engineering will prepare you to enter your next semester of a bachelor's degree program at the University of South Florida. After successfully completing International Year One, you are guaranteed to enter your next semester of study. This transition to university from an INTO program is called progression.

Progression Options

- Biomedical Engineering
- Chemical Engineering
- Civil Engineering
- Electrical Engineering
- Environmental Engineering
- Industrial Engineering
- Mechanical Engineering

Student Organizations

- Biomedical Engineering Society
- Brain-Computer Interface (BCI) Club
- Bulls Racing
- GAMEDEV Club
- Society of Aeronautics and Rocketry (SOAR)
- Society of Automotive Engineers
- Tau Beta Pi, Engineering Honor Society

Facilities

- Over **65** research centers and labs across 7 departments
- **112 acres** of research space is being built at the Tampa campus Research Park
- **Teaching laboratories** and collaborative **student laboratories** such as the Design For X (DFX) Lab; Nanotechnology Research and Education Center (NREC) and more

Points of Pride

- USF has ranked in the **Top 50** among public US Universities for 3 years in a row (*U.S. News and World Report 2022*).
- Accredited by the **Engineering Accreditation Commission** of ABET.
- The College of Engineering offers a **Research Experience for Undergraduates Program** that allows students to directly participate in research as research assistants to professors and graduate students on a variety of interdisciplinary research projects.
- USF is in the **Top 5** for **Student Success** among public research universities (*Eduventures Student Success Ratings 2018*).

TOP 10 Among
Public Universities
in the US for Patents
Awarded

National Academy of Inventors
2020

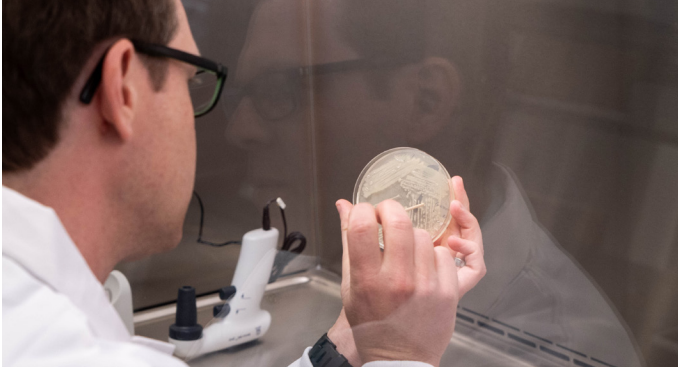


"From the very beginning INTO has been there to make me more comfortable, from helping me find my classes to introducing me to new people from all over the world."

Abdulla, UAE
IYO Engineering

Career Opportunities

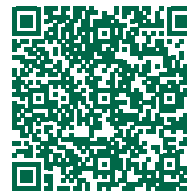
University of South Florida's Tampa campus is located just 20 minutes away from our thriving downtown, which is home to many companies that hire USF Graduates. With a degree in Engineering, graduates will have many exciting career paths to can pursue. USF Engineering graduates have been hired by Tesla, Jabil, Raytheon, Honeywell, Google, NASA, Microsoft, Amazon, Nielsen, Nokia, IBM, Cisco and many more.







Why International Year One?

- Earn credits toward your degree even if you don't meet the academic and English requirements for direct entry
- Receive additional support to move you successfully through your first year at a US university
- Graduate in the same amount of time as domestic students
- Smaller class sizes allow you to spend more time with your teachers

FIND OUT MORE



-  facebook.com/intousf
-  instagram.com/intousf
-  [whatsapp: +1 813 944 9488](https://whatsapp.com/+18139449488)
-  intostudy.com/chat-usf

International Year One in Engineering*

2-Semester Pathway	Degree Program Components			Program Information
	128 credit hour program 19 credit hours apply from Pathway 109 credit hours remaining toward degree			
Entry Requirements	Semester 1	Course Title	Credit Hours	Progression Requirements
<ul style="list-style-type: none"> • High School Diploma with equivalent of a 2.5 GPA out of 4.0 	EAP 1850	English for International Students I	6	<ul style="list-style-type: none"> • 2.25+ GPA • No "U" grade in a class • No "W" or "I" grade in a class • Grade of "C" or better in all classes • Student is fully admitted to USF provided successful completion of provisional admission criteria at the end of the Pathway • SAT or ACT on record but no minimum scores required
Language Requirements	SPC 2608	Public Speaking	3	
<ul style="list-style-type: none"> • TOEFL iBT 60-78 • IELTS 5.5-6.0 • PTEA 44-52 • Completion of Academic English Level 4 • IELA 162 • Duolingo 190 	EGN 3000L	Foundations of Engineering Lab ¹	1	
	MAC 2281	Engineering Calculus I	4	
	Total		14	
	Semester 2	Course Title	Credit Hours	
	EAP 1851	English for International Students II	6	
	AMH 2020	American History II	3	
	CHS 2440	Chemistry for Engineers ²	3	
	CHS 2440L	Chemistry for Engineers lab ²	1	
	MAC 2282	Engineering Calculus II	4	
	Total		17	
1-Semester Pathway	Degree Program Components			Notes
	128 credit hour program 15 credit hours apply from Pathway 113 credit hours remaining toward degree			* The grid is for reference only and does not reflect an exact schedule.
Entry Requirements	Semester 1	Course Title	Credit Hours	Because of the intense nature of Summer classes, students will be enrolled in fewer credit hours during the summer semester. ¹ Offered for students beginning in Fall or Spring ² Offered for students beginning in Fall or Summer Math placement will be dictated by a placement test that is administered prior to arrival. These courses are generally delivered through the INTO USF Center and are for Pathway students only. EGN 3000L is taught outside the INTO USF Center but is for Pathway students only.
<ul style="list-style-type: none"> • High School Diploma with equivalent of a 2.5 GPA out of 4.0 	SPC 2608	Public Speaking	3	
Language Requirements	EGN 3000L	Foundations of Engineering Lab ¹	1	
<ul style="list-style-type: none"> • TOEFL 79+ • IELTS 6.5+ • PTEA 53+ • IELA 176 (169 in all subscores) • Duolingo 105 	MAC 2281	Engineering Calculus I	4	
	ENC 1101	Composition I	3	
	CHS 2440	Chemistry for Engineers ²	3	
	CHS 2440L	Chemistry for Engineers lab ²	1	
	Total		15	

About INTO USF

INTO USF's Pathway programs are ideal for international students who need additional English language and academic preparation before continuing to a degree program at a U.S. university. In addition, our English language programs can help students acquire the English language skills for university study at USF and attain academic, professional, personal goals.

Tier 1 
Research University

Carnegie Classification of Institutions of Higher Education