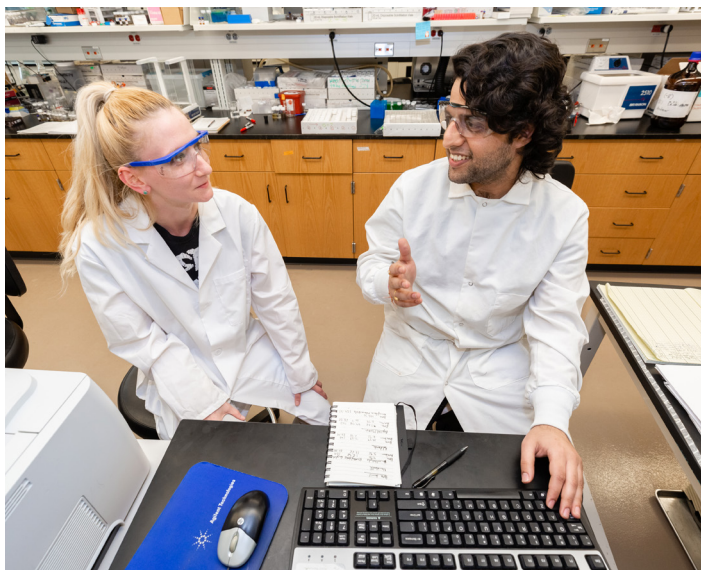


International Year One in Natural and Health Sciences



International Year One in Natural and Health Sciences will prepare you to enter the second year of a bachelor's degree program at the University of South Florida. After successfully completing International Year One, you are guaranteed to enter your next semester of study. This transition to university from an INTO program is called progression.

Progression Options

- Behavioral Health Care
- Biomedical Sciences
- Cell and Molecular Biology
- Chemistry
- Environmental Science and Policy
- Geology
- Health Science [Available

concentration in Biological Health Sciences]

- Interdisciplinary - Natural Sciences
- Marine Biology
- Mathematics
- Medical Technology
- Microbiology
- Physics
- Public Health
- Statistics

Facilities

- Chemistry labs including: analytical, general, inorganic, methods, organic and physical
- Biochemistry and clinical labs
- Shimberg Health Sciences Library
- Research labs including: GeoPark, Center for Geochemical Research, Water Institute, Weather Center and more

Points of Pride

- USF has ranked in the **Top 50** among public US Universities for 3 years in a row (*U.S. News and World Report 2022*).
- USF offers a two week **Geology Summer Field School**, taking students out of the classroom to gain practical skills.
- Research opportunities for Undergraduate students including: **Drug Discovery and Medicinal Chemistry**, **College of Behavioral and Community Sciences undergraduate research assistantships**, and many more (see facilities section for more examples of research labs).
- USF is in the **Top 5** for **Student Success** among public research universities (*Eduventures Student Success Ratings 2018*).

#1 Best
Value College for
Public Health

College Factual 2021

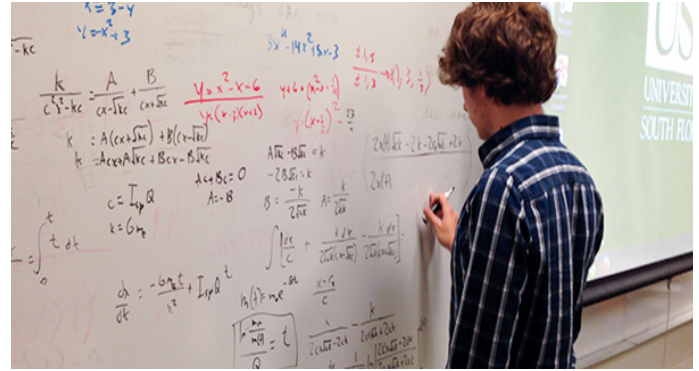
Career Opportunities

International Year One in Natural and Health Sciences opens you up to many degree possibilities and just as many career paths. University of South Florida students have been hired by companies such as **Public Health**: Moffitt Cancer Center, AIDS Healthcare Foundation, DAVA Oncology; **Statistics**: Jabil, Citigroup, Intel Corporation; **Biomedical Sciences**: Tampa General Hospital, ScribeAmerica, Tempus Labs and many more.



"It's a great opportunity here at USF because there's chemistry labs and biology labs. In my country, they have all solid base, but they don't have labs, supplies, or academic opportunities to make research and take part in it. You don't have such great opportunity to apply your knowledge, and here you have it."

Mykola, Ukraine
IYO Natural and Health Sciences







Why International Year One?

- Earn credits toward your degree even if you don't meet the academic and English requirements for direct entry
- Receive additional support to move you successfully through your first year at a US university
- Graduate in the same amount of time as domestic students
- Smaller class sizes allow you to spend more time with your teachers

FIND OUT MORE



-  facebook.com/intousf
-  instagram.com/intousf
-  whatsapp: **+1 813 944 9488**
-  intostudy.com/chat-usf

International Year One in Natural and Health Sciences*

2-Semester Pathway	Degree Program Components			Program Information	
	120 credit hour program 32 credit hours apply from Pathway 88 credit hours remaining toward degree				
Entry Requirements	Semester 1	Course Title	Credit Hours	Progression Requirements <ul style="list-style-type: none"> • 2.25+ GPA • No "U" grade in a class • No "W" or "I" grade in a class • Grade of "C" or better in all classes • Student is fully admitted to USF provided successful completion of provisional admission criteria at the end of the Pathway • SAT or ACT on record but no minimum scores required Notes <p>* The grid is for reference only and does not reflect an exact schedule.</p> <p>Because of the intense nature of Summer classes, students will be enrolled in fewer credit hours during the summer semester.</p> <p>¹ Offered for students beginning in Fall or Spring</p> <p>Math placement will be dictated by a placement test that is administered prior to arrival.</p> <p>These courses are generally delivered through the INTO USF Center and are for Pathway students only.</p>	
<ul style="list-style-type: none"> • High School Diploma with equivalent of a 2.5 GPA out of 4.0 	EAP 1850	English for International Students I	6		
Language Requirements	IDS 2378	Interdisciplinary Knowledge & Learning	3		
<ul style="list-style-type: none"> • TOEFL iBT 60-78 • IELTS 5.5-6.0 • PTEA 44-52 • Completion of Academic English Level 4 • IELA 162 • Duolingo 90 	SPC 2608	Public Speaking	3		
	MAC 2241	Life Science Calculus I	3		
	Total		15		
	Semester 2	Course Title	Credit Hours		
	EAP 1851	English for International Students II	6		
	AMH 2020	American History II	3		
	CHS 2045	General Chemistry I ¹	3		
	CHS 2045L	General Chemistry I Lab ¹	1		
	MAC 2242	Life Science Calculus II	4		
	Total		17		
1-Semester Pathway	Degree Program Components				
	120 credit hour program 16 credit hours apply from Pathway 104 credit hours remaining toward degree				
Entry Requirements	Semester 1	Course Title	Credit Hours		
<ul style="list-style-type: none"> • High School Diploma with equivalent of a 2.5 GPA out of 4.0 	IDS 2378	Interdisciplinary Knowledge & Learning	3		
Language Requirements	SPC 2608	Public Speaking	3		
<ul style="list-style-type: none"> • TOEFL 79+ • IELTS 6.5+ • PTEA 53+ • IELA 176 (169 in all subscores) • Duolingo 105 	ENC 1101	Composition I	3		
	MAC 2241	Life Science Calculus I	3		
	CHS 2045	General Chemistry I ¹	3		
	CHS 2045L	General Chemistry I Lab ¹	1		
	Total		16		

About INTO USF

INTO USF's Pathway programs are ideal for international students who need additional English language and academic preparation before continuing to a degree program at a U.S. university. In addition, our English language programs can help students acquire the English language skills for university study at USF and attain academic, professional, personal goals.

#2 Best Value 
Colleges in US for
International Students

College Factual 2021