



Oregon State
University



YOUR COMMUNITY YOUR FUTURE

GUIDE FOR INTERNATIONAL STUDENTS | 2021-2022





INTO OR

START AT OREGON STATE UNIVERSITY

TOP 1.4%

GLOBAL UNIVERSITY
Center for World University Rankings 2020

TOP 15%

BEST PAID GRADUATES IN THE US
PayScale College Salary Report 2019

#1

SAFEST COLLEGE CAMPUS IN THE US
ADT News and Resources 2018

#1

BEST CITY TO LIVE IN OREGON
Chamber of Commerce 2019

#82

BEST PUBLIC UNIVERSITY
Times Higher Education 2020

#41

TOP RESEARCH UNIVERSITY
Best College Reviews 2020

450+

COMPANIES RECRUITING STUDENTS FROM OREGON STATE UNIVERSITY
University Data 2020

TIER 1

HIGHEST RESEARCH ACTIVITY
Carnegie Classification of Institutions of Higher Education



TOP PROGRAMS



UNDERGRADUATE

#1 NATURAL RESOURCE MANAGEMENT
College Factual 2020

1% MOST POPULAR COMPUTER SCIENCE PROGRAM IN THE US
College Factual 2020

#24 AGRICULTURAL SCIENCES
QS World University Rankings 2020

#37 EARTH AND MARINE SCIENCES
QS World University Rankings 2020

#63 ENGINEERING
U.S. News & World Report 2021

#71 COMPUTER SCIENCE
U.S. News & World Report 2021

#116 BUSINESS
U.S. News & World Report 2021

GRADUATE

#5 HUMAN DEVELOPMENT AND FAMILY STUDIES
College Factual 2020

#7 ROBOTICS
Analytics Insight 2019

#18 SUPPLY CHAIN AND LOGISTICS MANAGEMENT
College Choice 2018

#21 BIOLOGICAL/AGRICULTURAL ENGINEERING
U.S. News & World Report 2020

#42 ENVIRONMENTAL ENGINEERING
U.S. News & World Report 2020

#43 CIVIL ENGINEERING
U.S. News & World Report 2020

#49 INDUSTRIAL ENGINEERING
U.S. News & World Report 2020

#58 ELECTRICAL ENGINEERING
U.S. News & World Report 2020

#68 COMPUTER SCIENCE
U.S. News & World Report 2020

AT A GLANCE

Founded: 1868

Campus: Corvallis, OREGON

City Population: 56,000

Campus Size: 400 acres

Enrollment: 31,719

International Students: 3,492

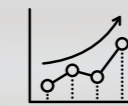
Countries Represented: 112

Bachelor's: 200+

Master's/PhD: 80+

Additional Campus: Bend, OREGON

EMPLOYABILITY



\$20,000
HIGHER AVERAGE SALARY

for OSU bachelor's graduates compared to national average 10 years after graduation.

US Department of Education / Department of Treasury 2019

OSU'S GRADUATES have gained employment with:

Adidas	Dell Inc.	Nvidia
Amazon	Deloitte	Pixar
Apple	Google	SpaceX
Boeing	HP	Tesla
Coach	Intel	
Columbia Sportswear	Nike	

"The best thing I experienced at Oregon State University, that I am able to apply in my work, was the practical knowledge and exposure to projects earlier in my studies. The very first term at Oregon State University, I studied a subject called design for safety, and in that very first course, I was introduced into a lot of practical knowledge."

Coming to a new country and learning the new construction methods in that course was a really great exposure for me. This helps me a lot to make [safety] observations, to determine what kind of work is good, safe and productive."



Amit, India
MEng in Civil Engineering,
Class of 2019
Field Engineer at Turner Construction,
Salem, OR

RESEARCH

\$441M
IN RESEARCH FUNDING

University Data 2019

LAND, SEA, SPACE AND SUN GRANT

As a leader in climate change research, OSU is one of only two (alongside Penn State) US universities to have Land, Sea, Space and Sun Grant designations. This means OSU is involved with research in all four areas.





Haiyi, China
BS Finance and Accounting,
Class of 2019
Audit & Assurance at Deloitte,
Portland, OR



Akshay, India
MEng in Civil Engineering,
Class of 2019
Civil Engineer for Lewis & Van
Vleet, Inc. Portland, OR



Ananiya, Ethiopia
BS in BioResource Research,
Class of 2018
PhD Candidate in
Pharmaceutical Sciences,
Class of 2023
Undergraduate Research
Assistant at Dr. Taifo
Mahmud's Lab
in the College of Pharmacy
Oregon State University,
Corvallis, OR



Angela, Colombia
MPP in Public Policy, Class of 2019
Intern for Oregon Department
of State Lands, Salem, OR



Alisha, Kazakhstan
BS in Civil Engineering, Class of 2020
Intern at ODOT, Salem, OR

Aldi, Indonesia
MEng in Computer Science, Class of 2019
Information Technology Resident
at Google, San Francisco, CA



Anand, India
BS in Computer Science, Class of 2016
Test Engineer at HP, San Diego, CA



BUILD YOUR FUTURE ON THE WEST COAST

OSU Students work all over the US and the world. See what you can do on the West Coast.

THE INTO OSU ADVANTAGE

INTO OSU is one of the oldest and most integrated Pathway programs in the US. OSU's commitment to international education is evident in the purpose-built five-story International Living-Learning Center. The center is a vibrant global hub of student life and educational activity which also houses the INTO OSU Center.

INTO OSU provides services such as:

- Personalized academic, language and cultural support
- Targeted tutoring and self-study learning support resources
- Your own academic success and personal advisor
- Comprehensive orientation with free airport pickup
- English Conversation Partner Program
- Social events and trips around Oregon
- 150 INTO OSU and OSU staff and teachers to support students



INTO OSU SUCCESS

85% OF ALL PATHWAY STUDENTS WERE ELIGIBLE TO PROGRESS AT OSU IN 2018-19.

Eligible students are those who successfully completed the Pathway program and qualified for admission as degree-seeking students.

Enrolled students are those who enrolled as degree-seeking students in their next term of degree study at Oregon State University.

Undergraduate and Graduate Progression Rate 2018-2019

85%
ELIGIBLE STUDENTS

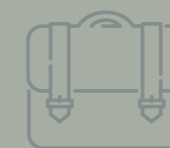
98.1%
OF ELIGIBLE STUDENTS
ENROLLED

SUCCEED IN INNOVATION NATION

#10

BEST COLLEGE TOWN
IN AMERICA

Best College Review 2019



581 STUDENTS

PARTICIPATING IN OPT OR CPT IN 2019

University Data 2019



#33

MOST INNOVATIVE
SCHOOL IN THE US

U.S. News & World Report 2019

400+
STUDENT CLUBS

#3

OCEANOGRAPHY PROGRAM
in the World

Shanghai Rankings 2018

5th

BEST ONLINE
BACHELOR
PROGRAM IN THE US

U.S. News & World Report 2019



#10

BEST BIG DATA
degree in the US

College Choice 2018

#4

TOP PRODUCING US
UNIVERSITY FOR
FULBRIGHT
SCHOLARS

Fulbright U.S. Scholar Program 2020



#37

IN EARTH SCIENCES

QS World University Rankings 2019



LIVING IN OREGON

Expand Your Horizons in Corvallis

- Free public transportation
- 45 minutes to the Pacific Ocean
- 90 minutes to Portland
- 5 minutes to HP Research Campus

Experience Oregon

- No sales tax
- Silicon Forest: home to high-tech companies
- Nike Headquarters in Beaverton, OR
- National Basketball Association: Portland Trail Blazers
- Major League Soccer: Timbers
- Outdoor recreation

Explore the OSU-Cascades Campus

- OSU Campus located in Bend, OR
- 16 students per class on average
- 1,259 students on campus
- 300 days of sunshine
- 30+ degrees, minors and options, including two campus-specific majors
- Computer Science with option to specialize in web and mobile software development
- 100% job placement for Computer Science graduates
- Specialized internship opportunities in Energy Systems Engineering, Hospitality and Computer Science

HOUSING AND DINING

Living in the heart of Beaver Nation

Living on campus places you steps away from all the resources you need to succeed in your first year and beyond. You'll have the most convenient access to your classes, the library, dining halls and the recreation center, while living among American students in a diverse and welcoming community.

Living-Learning Communities

Living-Learning Communities (LLCs) are academic programs that partner with residential communities on campus. In addition to living among students in the same major, college, academic focus or program, we hold events in your community that are related to your area of interest. Living in an LLC is a great way to create strong connections with other students and to build relationships with faculty and advisers in your program.

Living On Campus

Program	REQUIRED	NOT REQUIRED
Academic English (AE)		●
International Year One (IYO) / AE + IYO	●*	
International Direct (ID) / AE + ID	●*	
Undergraduate Transfer Program (UTP) / AE + UTP	●*	
Master's International Direct (MID)		●
Graduate Pathway (GPW) / AE + GPW		●

*Students more than one year past high school graduation are not required to live on campus.

Bedroom Types

Single Room

1 student per bedroom



Double Room

2 students per bedroom



Triple Room

3 students per bedroom



Bathroom Types

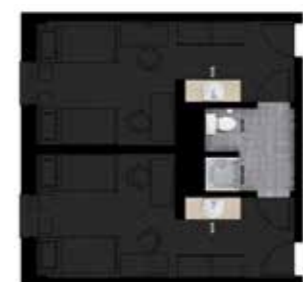
Private

Bathroom for 1 bedroom (1-2 people)



Suite-style

Bathroom for 2-3 bedrooms (2-6 people)



Shared

Bathroom for multiple bedrooms



Note: The floor plans and bathroom types may vary.

LEARN MORE ABOUT OUR HOUSING OPTIONS:
www.intostudy.com/osu/housing



MEAL PLANS: All on-campus housing options include a meal plan.

Live-on Requirement: All first-year undergraduate students who enroll at OSU within one year of high school graduation must live on campus. Students more than one year past high school graduation are not required to live on campus.

For more information on this policy, including available exemptions, visit studentlife.oregonstate.edu/first-year-experience-live-policy

Students not required to live on campus may choose to do so, but should carefully review contract length and cancellation policies.

RESEARCH EXCELLENCE

For more than 150 years, students, alumni and faculty have made outstanding achievements including developing the artificial heart valve, TRIGA Reactor and wristband samplers that detect environmental chemicals.

GLUCOSE-SENSING CONTACT LENSES

The contact lens is a hypothetical application of a transparent sensor developed at OSU. The goal is to expand contact lens sensors to a range of tear fluid biomarkers, which can be used to identify a range of ocular disorders (dry eye disease, diabetic retinopathy, glaucoma, etc.), cancers (colon, prostate, breast, lung, etc.), multiple sclerosis and many other diseases.

ROBOTIC MOBILITY

Imagine if robots had legs and could walk on the same terrain as people. Agility Robotics, a company first developed at OSU, is making robotic mobility a reality. Advanced mobility could change the future by enabling shipping to be more automated and opening up new possibilities in manufacturing and production.

INNOVATION NATION

First year business students and their business teammates get to run their own micro business with real money, real profits, real goods and services. Through this interactive experience, you will gain competitive skills, giving you an edge when applying to internships and jobs after graduation.

HANDS-ON BUSINESS RESEARCH

The College of Business Research Suite is outfitted with cutting-edge technology, space and design to conduct innovative research in business, market trends and consumer insights. Apply your research through entrepreneurship programs and access the C2C Marketing Lab. Students can also participate in the Advantage Accelerator, a unique program designed to assist startups in all stages of their growth. You will work directly with innovators and entrepreneurs to explore markets, develop products and obtain customers.

FACULTY SPOTLIGHT: YEONGJIN JANG

Yeongjin is an Assistant Professor of computer science in the Oregon State University College of Engineering's School of Electrical Engineering and Computer Science. His research focuses on computer systems security, especially for identifying and analyzing emerging attacks to computer systems for building more secure systems. In addition to his academic work, he participates in cybersecurity capture the flag (CTF) contests. He received the Black Badge award from DEFCON, as the winner (team DEFKOR) of DEFCON 23 CTF (2015) and the winner (team DEFKOR00t) of DEFCON 26 CTF (2018). He was also one of the finalists (team Disekt) at the DARPA Cyber Grand Challenge final event in 2016.



Photo by Johanna Carson, College of Engineering

YOUR CAREER STARTS HERE

It pays to be an OSU graduate. OSU alumni who graduated with a bachelor's degree are in the top 15% best paid graduates in the US. *PayScale College Salary Report 2019*

GET READY FOR YOUR FUTURE

The top three attributes employers are seeking from recent graduates are*:

1. Communication skills (written)
2. Problem-solving skills
3. Ability to work in a team

Gain these soft skills in all 170 majors, including public health, business and computer science.

INTERNSHIPS DRIVEN BY INDUSTRY

OSU offers several support services to find internship placements, including MECOP which is unique to Oregon. With over 130 different companies participating in the program, MECOP places students in paid internships in the fields of engineering, tech and business with top companies like Boeing, Intel, HP and Oracle.

JOBS ON CAMPUS

There are many opportunities for OSU students with a minimum of 5,000 jobs available daily on the career center portal. International students are eligible to work on campus for up to 20 hours a week, earning an estimated \$8,100 to help offset your educational costs.

*National Association of Colleges and Employers 2019

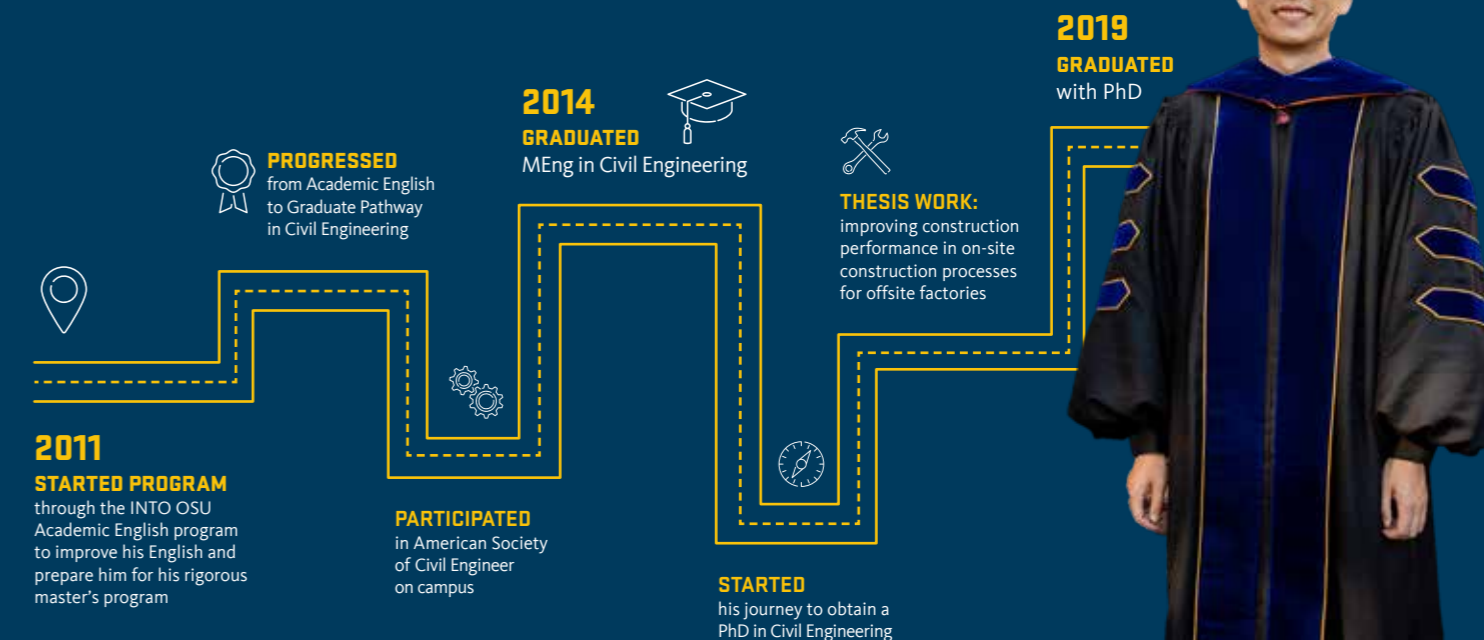


STUDENT JOURNEY

Ding, China

MEng in Civil Engineering, Class of 2014 | PhD in Civil Engineering, Class of 2019

"I got several offers from universities as a faculty position. I haven't decided which one to choose, but I will definitely be a faculty member at a university back home in China."





UNDERGRADUATE TRANSFER >>

Have you earned credits from another college or university and want to transfer to a US university? You can transfer directly into Oregon State University or choose our Undergraduate Transfer Program (UTP) which is specifically designed to support international students through the process of transferring.

Entry Requirements		
Program	DIRECT TRANSFER	UNDERGRADUATE TRANSFER PROGRAM
Program Length	N/A	1-Term, 2-Term, 3-Term or 4-Term
Start Dates	Fall 2021: Sep 2021 Winter 2021: Dec 2021 Spring 2022: Mar 2022 Summer 2022: Jun 2022	Fall 2021: Sep 15, 2021 Winter 2021: Dec 27, 2021 Spring 2022: Mar 22, 2022 Summer 2022: Jun 14, 2022
GPA	2.25-2.49 college/university GPA (College Math course completed with C-) 2.50+ college/university GPA (College Math course not required) If transferring from a US-accredited college/university, Writing 121 OSU course equivalent completed with C- or better. If transferring from a non-US-accredited college or university then no Writing 121 OSU course equivalent is required	2.25
TOEFL iBT	80 (minimum 16 subscores)	50-79
IELTS	6.5	5.0-6.0
IELA	176	154-175
Other	<ul style="list-style-type: none"> Two English composition courses from a recognized college or university in the US with grades C- or better One English composition and one speech communication course with grades C- or better Level 6 Academic English completion with C/Pass or higher in all classes 	N/A
Duolingo	N/A	75-110
Minimum Transfer Credits	24 per quarter (16 per semester) credits	15 per quarter (12 per semester) credits from a recognized college or university
Maximum Transfer Credits	No limit	No limit

Entry requirements are subject to change and may vary by program.

Why Choose UTP?

Choosing UTP provides a customized path to your bachelor's degree. Before your program starts, Oregon State University will provide you with an estimate of credits that will transfer to the university. Once you arrive on campus, our friendly staff will be available to help you transition into life at a US university. You will also have access to helpful resources including academic, English language and cultural support. If you do not meet the English language entry requirements for the UTP, you can enter our Academic English program before progressing to either the UTP or direct transfer to Oregon State University.

UTP Benefits:

- Transfer of credits from your college or university-level classes
- Receive customized curriculum of university credit-bearing courses
- Quick turnaround time for offer (5-7 business days)
- Unofficial Pre-arrival Credit Evaluation (15 additional business days after receiving offer letter)
- Guaranteed progression to any undergraduate program upon successful completion of your UTP
- Academic advising throughout the program including progression and student success advisors

Start Dates	Fall 2021: Sep 15, 2021	Winter 2021: Dec 27, 2021	Spring 2022: Mar 22, 2022	Summer 2022: Jun 14, 2022
Business	●●	●●	●●	●●
Computer Science	●●	●●	●●	●●
Design, Apparel and Merchandising Management	●●	●●	●●	●●
Engineering	●●	●●	●●	●●
Environmental Economics and Policy	●●	●●	●●	●●
Exercise and Sport Science	●●	●●	●●	●●
Food Science and Technology	●●	●●	●●	●●
Forestry	●●	●●	●●	●●
General	●●●●	●●●●	●●●●	●●●●
Mathematics	●●	●●	●●	●●
Natural Resources and Renewable Materials	●●	●●	●●	●●
Psychology	●●	●●	●●	●●
Public Policy	●●	●●	●●	●●
Science	●●	●●	●●	●●
Women and Gender Studies	●●	●●	●●	●●

● 1-Term ● 2-Term ● 3-Term ● 4-Term

GRADUATE ADMISSIONS >>

OSU offers more than 80 graduate programs, many of which are ranked among the top in the nation. There are several different paths to begin earning your degree.

How you start your program depends on your academic profile and your English level. How you finish your program is exactly how you pictured: graduating with a master's or PhD from OSU.

→ **Direct Entry:** If you meet the academic and English language requirements for your degree program, you can apply directly to OSU.

To apply, you may need the following required documents: declarations, university transcripts, proof of degree, accounting of time, passport and English test score. An application fee may also apply.

The graduate admissions process is competitive, and an extensive review of your application will be done. Please expect a longer turnaround for an admissions decision. For more information, visit gradschool.oregonstate.edu/admissions/after-you-apply

→ **Master's International Direct:** Our Master's International Direct route gives you direct access into your degree program with additional support in the first term. The admissions process is non-competitive, has no application fees and does not require additional test scores. More information on the following pages.

→ **Graduate Pathway:** Our Graduate Pathways allow you to begin earning credits toward your degree even if you do not meet the academic and English requirements for direct entry. The program will help build the academic foundation and essential English language skills you need to succeed in your master's degree. View program specific entry requirements at www.intostudy.com/osu/programs

→ **Academic English Language Program:** If you do not meet the direct or Graduate Pathway program entry language requirements, you can enter our Academic English program to improve your academic and language skills. Once you have achieved the required language level, you can progress to a Graduate Pathway program or enter your degree program directly. Learn more on page 18.

Program	DIRECT		GRADUATE PATHWAY		
	DIRECT ENTRY**	MID*	1-TERM	2-TERM	3-TERM
Program requirements	<ul style="list-style-type: none"> See gradschool.oregonstate.edu/programs for specific program entry requirements Additional requirements may include standardized tests like the GMAT or GRE The degree program you select may have additional requirements 	<ul style="list-style-type: none"> Undergraduate degree in relevant discipline (undergraduate degree in any discipline for MSB) For additional requirements, please see chart on page 15. 	Undergraduate degree in relevant discipline (undergraduate degree in any discipline for MSB/MBA/MPH)		
Minimum GPA Equivalent	3.0	3.0	3.0	2.5	2.5
TOEFL iBT	91 (18 minimum subscores)	80 (18 subscores)	85 (16 subscores)	80 (16 subscores)	70
IELTS	7.0	6.5 (5.5 subscores)	6.5 (6.0 subscores)	6.5 (5.5 subscores)	6.0
Duolingo	N/A	N/A	120	110	95
Academic English	N/A	N/A	N/A	Level 6	Level 5

Notes: *All entry requirements are subject to change and may vary by program. In addition to meeting minimum admission requirements, you may also need to meet specific program requirements.

**These English requirements are for direct entry to graduate degree programs that have a Graduate Pathway option. English requirements for direct entry to all other graduate programs can be found on the Graduate School website: <https://gradschool.oregonstate.edu/admissions/international/english-language>

Institutional Code TOEFL: 4586 GRE: 4586 GMAT: PW4-DR-05

Dates			
Program	DIRECT		GRADUATE PATHWAY
	DIRECT ENTRY	MID	
Start Dates	Fall 2021: Sep 2021 Winter 2021: Dec 2021 Spring 2022: Mar 2022 Summer 2022: Jun 2022	Fall 2021: Sep 13, 2021 Winter 2021: Dec 29, 2021 Spring 2022: Mar 24, 2022 Summer 2022: Jun 16, 2022	Fall 2021: Sep 15, 2021 Winter 2021: Dec 27, 2021 Spring 2022: Mar 22, 2022 Summer 2022: Jun 14, 2022

Program start dates vary in availability, view chart on pages 15-17 for more information

[SAMPLE GRADUATE PATHWAY PROGRAM] MS Business			
3-Term	Degree Program Components		Program Information
Fall: September 15, 2021 Winter: December 27, 2021	45 credit hour program 15 credit hours from Pathway apply to degree 30 credit hours remaining toward degree		
Entry Requirements	Term 1	Course Title	Credit Hours
<ul style="list-style-type: none"> 2.5 GPA Undergraduate degree in a relevant discipline 	ALS 173	Communication for International Grad Business Students	3
	ALS 174	Professional Writing for Grad Business Students	3
Language Requirements	ALS 145	Building Strategies for Graduate Success	3
<ul style="list-style-type: none"> TOEFL iBT 70 or IELTS 6.0 or Duolingo 95 	ST 5XX	Graduate Course in Statistics	4
	Total		13
	Term 2	Course Title	Credit Hours
	BA 512	Business Analysis and Communication	6
	BA 515	Managerial Decision Tools	3
	COMM 218	Interpersonal Communication	3
	Total		12
	Term 3	Course Title	Credit Hours
	BA 513	Business Legal Environment	3
	BA 514	Operations Management	3
	BA 516	Creating Value in Exchange	3
	BA 517	Markets and Valuation	3
	Total		12

Progression Requirements

- 3.0 GPA cumulative and B or higher grades in all graduate level classes
- B or higher grade in all English language classes or TOEFL 91 (18 subscores) or IELTS 7.0

Notes

- BA 512 is required for Pathway students but does not apply to MSB program requirements.

These courses are generally delivered through the INTO OSU Center and are for Pathway students only.

business.oregonstate.edu

MASTER'S INTERNATIONAL DIRECT (MID) >>

Here to support you through a journey of success

At OSU, we've been leading the way for international student support and success in the US. Throughout the years, we've helped international students grow to become leaders in their social and academic communities as they gather the experiences that build their futures.

With Master's International Direct (MID), you are entering directly into an OSU graduate program. From selecting and registering for the right academic courses to accessing jobs, internships and other opportunities through our on-campus resources—we will be there for you every step of the way. You will be working with world-class faculty to create your best work while gaining the customized support to carry you through the international student journey. MID gives you the opportunity to prepare for your future career, building connections and a professional network with global companies. As an MID student, you will receive extra support including:



INTERNATIONAL ACADEMIC ADVISING

From the day you confirm, your advisors will support you with early registration, making sure you have access to the course options to achieve your personal goals. They will work closely with you throughout your first term to help you adapt to a new educational environment and keep you on track for an on-time graduation.



COMPREHENSIVE INTERNATIONAL SUPPORT

From your first days we provide pre-arrival advice, arrival support and acclimation orientations after arrival. Once you're on campus, the support doesn't end. You will have access to cultural assistance and community building experiences to help you integrate on campus and build connections with friends and faculty.

"I joined Oregon State University which was a good decision in my life. As an international student, it is difficult to come to a new country and a new educational system. My advisors helped me out quite a lot to understand how this system works. OSU helped me with preparing my mindset for what grad school is like and also helped me to meet with a lot of professors."



AKSHAY, INDIA
MEng in Civil Engineering

"Engineering students here in OSU shocked me. Everyone has experience and passion for what they do, and they have the ability to question what professors teach in class. That is a totally different learning experience from Taiwanese universities where we are just trying to get our degree."



HAN-TING, TAIWAN,
MS in Electrical and Computer Engineering

*Estimated credits remaining after MID term/Total credit hours needed to complete degree.

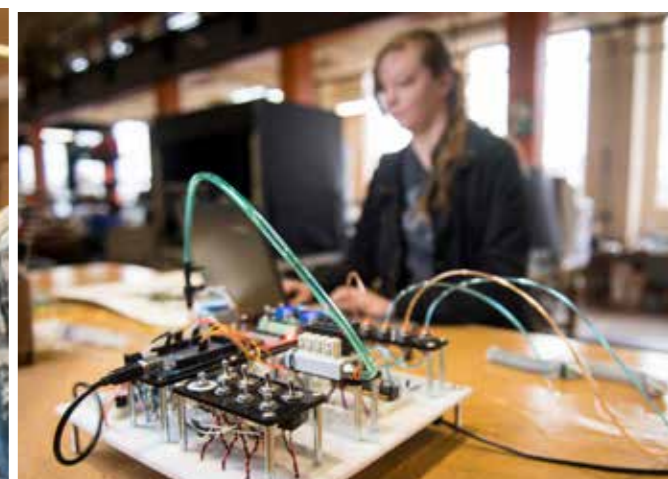
Terms	Start Dates				Credits*	GPA	Entry Requirements	TOEFL	IELTS
	Fall	Winter	Spring	Summer					
Bioengineering									
1-Term (MID)	•				35-37/45	3.0	• Undergraduate degree in relevant discipline • 2.0 in 1 year of college level Math	80 (1.8 subscores)	6.5 (5.5 subscores)
Chemical Engineering									
1-Term (MID)	•				35-37/45	3.0	• Undergraduate degree in relevant discipline • Math through Differential Equations; Chemistry including General, Organic, and Physical; 1 year of Physics • Completion of following courses with a 3.0 average: Fluid Mechanics; Thermodynamics; Heat and Mass Transfer; Chemical Reaction Engineering	80 (1.8 subscores)	6.5 (5.5 subscores)
Civil Engineering									
1-Term (MID)	•				35-37/45	3.0	• Undergraduate degree in relevant discipline • Completion of 3 out of 5 of following courses with a grade equivalent to a 3.0 in each individual course: Engineering Statistics; Engineering Dynamics; Strength of Materials; Structural Analysis; Steel or Concrete Design	80 (1.8 subscores)	6.5 (5.5 subscores)
Computer Science									
1-Term (MID)	•	•	•		35-37/45	3.0	• Undergraduate degree in relevant discipline; • 2.0 GPA in 1 year of college level Math; Complete 3/6 upper-division courses with a grade equivalent to a 3.0 in each individual course: Algorithm Design and Analysis; Computer Architecture; Operating; Automata Theory/Theory of Computation; Programming Language Fundamentals; Compilers	80 (1.8 subscores)	6.5 (5.5 subscores)
Electrical and Computer Engineering									
1-Term (MID)	•	•	•		35-37/45	3.0	• Undergraduate degree in relevant discipline; • 2.0 GPA in 1 year of Calculus; • 2.0 GPA in 1 year of Physics; • Complete 3/6 courses with a grade equivalent to a 3.0 in each individual course: AC/DC Circuits/Circuits Analysis; Signals and Systems; Electricity and Magnetism; Power*; Computer Engineering*; Materials and Devices*. *taken in 3rd or 4th year of UG study.	80 (1.8 subscores)	6.5 (5.5 subscores)
Environmental Engineering									
1-Term (MID)	•				35-37/45	3.0	• Undergraduate degree in relevant discipline • Math through Differential Equations; 1 year of Physics; 1 year of General Chemistry • Completion of 1 of 3 courses below with a 3.0 average: Introduction to Environmental Engineering; Water and Wastewater Treatment; Mass and Energy Balances	80 (1.8 subscores)	6.5 (5.5 subscores)
Environmental Sciences									
1-Term (MID)	•	•	•		35-37/45	3.0	• Undergraduate degree in relevant discipline	80 (1.8 subscores)	6.5 (5.5 subscores)
Industrial Engineering									
1-Term (MID)	•	•	•		35-37/45	3.0	• Undergraduate degree in relevant discipline • 2.0 GPA in 1 year college level Math • Completion of all courses below with a 3.0 average: Programming Language Fundamentals; Statistics; Production Engineering/ Production Management; Facilities Design/Facilities Planning	80 (1.8 subscores)	6.5 (5.5 subscores)
MS Business									
1-Term (MID)	•	•	•	•	35-37/45	3.0	• Undergraduate degree in any discipline for winter, spring and summer start terms, Undergraduate degree in Business/Economics/STEM degree for fall start term	80 (1.8 subscores)	6.5 (5.5 subscores)

Entry requirements are subject to change and may vary by program.

[SAMPLE MID FIRST TERM] Master's International Direct in Bioengineering

1-Term MID Fall: September 13, 2021	First Term Components 45 credit hour program	Program Information		
Entry Requirements	Term 1	Course Title	Credit Hours	Additional Information
• 3.0 overall GPA, undergraduate degree in relevant discipline	ALS 145	Building Strategies for Grad Success	3	Academic grid shown is a sample of MID coursework. Please speak with your Academic Advisor to learn more about the availability of courses in your chosen program. Note: Entry requirements are subject to change and may vary by program. Besides meeting minimum admission requirements, you also must meet specific program requirements
Additional Entry Requirements	WR 599	Graduate Writing for ELL Students	3	
• 2.0 GPA in 1 year of college level Math	CHE 525	Chemical Engineering Analysis	4	
Language Requirements	BIOE 512	Modeling of Physiological Systems	4	
• TOEFL 80 (1.8 subscores) • IELTS 6.5 (5.5 subscores)	ENGR 520	Intro to Portfolio	1	
			Total 15	

cbee.oregonstate.edu



Graduate Pathway Programs

*Estimated credits remaining after Pathway/Total credit hours needed to complete degree.

**For English Language tests subscores, please see entry requirements table on page 13.

Term	Start Dates				Credits*	Entry Requirements**				Progression Requirements		
	Fall	Winter	Spring	Summer		GPA	Undergraduate degree ¹	TOEFL iBT	IELTS	Duolingo	GPA	Other
Applied Economics												
3-Term	•				30/45	2.5	Undergraduate degree in a relevant discipline	70	6.0	95	3.0	• B or higher grades in all graduate level classes • B or higher grade in all English language classes OR TOEFL 91 (18 subscores) OR IELTS 7.0
2-Term		•			30/45	2.5	Undergraduate degree in a relevant discipline	80	6.5	110	3.0	• B or higher grades in all graduate level classes • B or higher grade in all English language classes OR TOEFL 91 (18 subscores) OR IELTS 7.0
Bioengineering												
3-Term	•				30/45	2.5	Undergraduate degree in a relevant discipline	70	6.0	95	3.0	• B or higher grades in all graduate level classes • B or higher grade in all English language classes OR TOEFL 91 (18 subscores) OR IELTS 7.0
2-Term		•			30/45	2.5	Undergraduate degree in a relevant discipline	80	6.5	110	3.0	• B or higher grades in all graduate level classes • B or higher grade in all English language classes OR TOEFL 91 (18 subscores) OR IELTS 7.0
Biostatistics												
3-Term	•				44/59	2.5	Undergraduate degree in a relevant discipline	70	6.0	95	3.0	• B or higher grades in all graduate level classes • B or higher grade in all English language classes OR TOEFL 91 (18 subscores) OR IELTS 7.0
2-Term		•			44/59	2.5	Undergraduate degree in a relevant discipline	80	6.5	110	3.0	• B or higher grades in all graduate level classes • B or higher grade in all English language classes OR TOEFL 91 (18 subscores) OR IELTS 7.0
Business Administration												
3-Term	•	•			45/60	2.5	Undergraduate degree in any discipline	70	6.0	95	3.0	• B or higher grades in all graduate level classes • B or higher grade in all English language classes OR TOEFL 91 (18 subscores) OR IELTS 7.0 • GMAT 500 with minimum 20th percentile in verbal, quantitative and integrated reasoning, and a minimum analytical writing score of 4 OR GRE total score of 304 with verbal and quantitative scores in at least the 30th percentile and an analytical writing score of 3.5
2-Term		•	•		45/60	2.5	Undergraduate degree in any discipline	80	6.5	110		
1-Term	•	•	•	•	50-51/60	3.0	Undergraduate degree in Business	85	6.5	120		
Chemical Engineering												
3-Term	•				30/45	2.5	Undergraduate degree in a relevant discipline	70	6.0	95	3.0	• B or higher grades in all graduate level classes • B or higher grade in all English language classes OR TOEFL 91 (18 subscores) OR IELTS 7.0
2-Term		•			30/45	2.5	Undergraduate degree in a relevant discipline	80	6.5	110	3.0	• B or higher grades in all graduate level classes • B or higher grade in all English language classes OR TOEFL 91 (18 subscores) OR IELTS 7.0
Civil Engineering												
3-Term			•		30/45	2.5	Undergraduate degree in a relevant discipline	70	6.0	95	3.0	• B or higher grades in all graduate level classes • B or higher grade in all English language classes OR TOEFL 91 (18 subscores) OR IELTS 7.0
2-Term	•				30/45	2.5	Undergraduate degree in a relevant discipline	80	6.5	110	3.0	• B or higher grades in all graduate level classes • B or higher grade in all English language classes OR TOEFL 91 (18 subscores) OR IELTS 7.0
Comparative Health Sciences												
3-Term	•			•	30/45	2.5	Undergraduate degree in a relevant discipline	70	6.0	95	3.0	• B or higher grades in all graduate level classes • B or higher grade in all English language classes OR TOEFL 91 (18 subscores) OR IELTS 7.0
2-Term	•	•			30/45	2.5	Undergraduate degree in a relevant discipline	80	6.5	110		
1-Term	•	•	•		35-36/45	3.0	Undergraduate degree in a relevant discipline	85	6.5	120		
Computer Science												
3-Term	•				30/45	2.5	Undergraduate degree in a relevant discipline	70	6.0	95	3.0	• B or higher grades in all graduate level classes • B or higher grade in all English language classes OR TOEFL 91 (18 subscores) OR IELTS 7.0
2-Term	•	•			30/45	2.5	Undergraduate degree in a relevant discipline	80	6.5	110		
Electrical and Computer Engineering												
3-Term	•				30/45	2.5	Undergraduate degree in a relevant discipline	70	6.0	95	3.0	• B or higher grades in all graduate level classes • B or higher grade in all English language classes OR TOEFL 91 (18 subscores) OR IELTS 7.0
2-Term	•	•			30/45	2.5	Undergraduate degree in a relevant discipline	80	6.5	110		
Environmental Engineering												
3-Term	•				30/45	2.5	Undergraduate degree in a relevant discipline	70	6.0	95	3.0	• B or higher grades in all graduate level classes • B or higher grade in all English language classes OR TOEFL 91 (18 subscores) OR IELTS 7.0
2-Term		•			30/45	2.5	Undergraduate degree in a relevant discipline	80	6.5	110		
Environmental Sciences												
3-Term	•		•		30/45	2.5	Undergraduate degree in a relevant discipline	70	6.0	95	3.0	• B or higher grades in all graduate level classes • B or higher grade in all English language classes OR TOEFL 91 (18 subscores) OR IELTS 7.0
2-Term	•	•			30/45	2.5	Undergraduate degree in a relevant discipline	80	6.5	110		
Global Health												
3-Term	•				45/60	2.5	Undergraduate degree in a relevant discipline	70	6.0	95	3.0	• B or higher grades in all graduate level classes • B or higher grade in all English language classes OR TOEFL 91 (18 subscores) OR IELTS 7.0
2-Term		•			45/60	2.5	Undergraduate degree in a relevant discipline	80	6.5	110		
1-Term			•		50-51/60	3.0	Undergraduate degree in a relevant discipline	85	6.5	120		
Health Promotion and Health Behavior												
3-Term	•				45/60	2.5	Undergraduate degree in a relevant discipline	70	6.0	95	3.0	• B or higher grades in all graduate level classes • B or higher grade in all English language classes OR TOEFL 91 (18 subscores) OR IELTS 7.0
Industrial Engineering												
3-Term	•				30/45	2.5	Undergraduate degree in a relevant discipline	70	6.0	95	3.0	• B or higher grades in all graduate level classes • B or higher grade in all English language classes OR TOEFL 91 (18 subscores) OR IELTS 7.0
2-Term	•	•			30/45	2.5	Undergraduate degree in a relevant discipline	80	6.5	110		
MS Business												
3-Term	•	•			30/45	2.5	Undergraduate degree in a relevant discipline	70	6.0	95	3.0	• B or higher grades in all graduate level classes • B or higher grade in all English language classes OR TOEFL 91 (18 subscores) OR IELTS 7.0
2-Term	•	•	•		30/45	2.5	Undergraduate degree in a relevant discipline	80	6.5	110		
Materials Chemistry												
3-Term	•				30/45	2.5	Undergraduate degree in a relevant discipline	70	6.0	95	3.0	• B or higher grades in all graduate level classes • B or higher grade in all English language classes OR TOEFL 91 (18 subscores) OR IELTS 7.0
1-Term	•				35-36/45	3.0	Undergraduate degree in a relevant discipline	85	6.5	120		
Mathematics												
3-Term			•		30/45	2.5	Undergraduate degree in a relevant discipline	70	6.0	95	3.0	• B or higher grades in all graduate level classes • B or higher grade in all English language classes OR TOEFL 91 (18 subscores) OR IELTS 7.0
2-Term	•				30/45	2.5	Undergraduate degree in a relevant discipline	80	6.5	110		

Entry and progression requirements are subject to change and may vary by program.

¹ Departments may be looking for specific prerequisite courses in determining relevant Undergraduate degree for admissibility to the Graduate Pathway Program.

Term	Start Dates				Credits*	Entry Requirements**				Progression Requirements		
	Fall	Winter	Spring	Summer		GPA	Undergraduate degree ¹	TOEFL iBT	IELTS	Duolingo	GPA	Other
Mechanical Engineering												
3-Term	•				30/45	2.5	Undergraduate degree in a relevant discipline	70	6.0	95	3.0	• B or higher grades in all graduate level classes • B or higher grade in all English language classes OR TOEFL 91 (18 subscores) OR IELTS 7.0
2-Term	•	•			30/45	2.5	Undergraduate degree in a relevant discipline	80	6.5	110		
1-Term	•	•	•		35-36/45	3.0	Undergraduate degree in a relevant discipline	85	6.5	120		

Entry and progression requirements are subject to change and may vary by program.

¹ Departments may be looking for specific prerequisite courses in determining relevant undergraduate degree for admissibility to the Graduate Pathway Program.



Oregon State University students and professors conducting climate change research in the Cascade Mountains, Mount Hood, Oregon.



ACADEMIC ENGLISH >>

Key Program Facts
Each term is 11 weeks
High school diploma required
No English language requirement; students assessed and placed upon arrival
Minimum age 16
7 levels of instruction from true beginner to advanced
18 hours of instruction per week

The Academic English program at OSU prepares you for university study in the US. You will receive high-quality English language instruction and the academic skills to succeed at OSU.

What You Will Learn

- Understand US values in an academic setting
- Present spoken and written ideas accurately and effectively in English
- Write research papers with proper use of citations and references
- Read, understand and critically evaluate academic texts
- Understand and use vocabulary common to academic disciplines
- Take useful and accurate notes in academic lectures and presentations

Estimated Academic English Level Based on Test Scores

The table below shows what your estimated level of AE will be if you submit standardized test scores with your application. Students will be tested during Orientation to determine their final AE level placement.

Estimated AE Level	TOEFL iBT	IELTS	Duolingo
2	32-44	3.5-4.0	70
3	45-59	4.5-5.0	80
4	60	5.5	90
5	70	6.0	100
6	80	6.5	110

Guaranteed Level

If you score lower on the placement test than your estimated level based on standardized tests, you are guaranteed to be placed no more than one level lower than your estimated level. If you score higher than your estimated level, you will be placed according to your placement test score.



Find out more at www.intostudy.com/osu/academic-english

Progression Requirements

Must meet academic entry requirements for desired program

International Year One/Undergraduate Transfer Program 4-Term

Completion of AE Level 3 with C/Pass or higher in all classes

International Year One/Undergraduate Transfer Program 3-Term

Completion of AE Level 4 with C/Pass or higher in all classes

Undergraduate Transfer Program 2-Term

Completion of AE Level 5 with C/Pass or higher in all classes

Undergraduate Transfer Program 1-Term

Completion of AE Level 6 with C/Pass or higher in all classes

Graduate Pathway 3-Term

Completion of AE Level 5 with C/Pass or higher in all classes

Graduate Pathway 2-Term

Completion of AE Level 6 with a C+/Pass or higher in all classes

International Direct

Completion of AE Level 5 with C/Pass or higher in all classes

Direct Transfer Undergraduate

Completion of AE Level 6 with C/Pass or higher in all classes

Direct Entry Graduate

Completion of AE Level 6 with B/Pass or higher in all classes. Please verify with the graduate program if AE is considered as an English entry requirement. To find your programs contact, visit gradschool.oregonstate.edu programs. Application deadlines vary and additional requirements may be needed depending on program.

STUDY ABROAD WITH ENGLISH

Study Abroad with English combines Academic English and OSU undergraduate classes. You will earn college credits in your field of interest without enrolling in a long-term degree. The program is customized for your English level and academic interest. Courses are available in liberal arts, business, engineering, public policy and the sciences.

Program Overview

Part 1: Academic English

Part 2: Academic English Classes and OSU Classes

Key Program Facts

Each term is 11 weeks	Minimum age 16
High school diploma required with 2.5 GPA or completion of at least one year of study at a university overseas with a minimum 2.25 GPA	

Part 1: No English Language Requirement

Part 2: English language requirements:

TOEFL iBT 60 or	IELTS 5.5 or	IELA 162 or	Duolingo 90
-----------------	--------------	-------------	-------------

Completion of Level 4 with minimum C/Pass grades in Study Abroad with English Part 1 or Academic English

Find out more at

www.intostudy.com/osu/study-abroad-with-english

VISITING INTERNATIONAL STUDENT PROGRAM

Experience life on an American college campus while taking OSU credit-bearing classes as a non-degree student for up to one year. You will have access to OSU courses in liberal arts, business, engineering, public policy and the sciences. Other courses may be available on a case-by-case basis.

Key Program Facts

Each term is 11 weeks	Minimum age 16
High school diploma required with 3.0 GPA or completion of at least one year of study at a university overseas with a minimum 2.25 GPA	

English language requirements:

TOEFL iBT 80 (minimum 16 subscores) or	IELTS 6.5 or	IELA 176 or	Duolingo 110 or	Completion of AE Level 6
--	--------------	-------------	-----------------	--------------------------

Learn more at

www.intostudy.com/osu/visiting-international-student-program

SUMMER AND SPECIAL PROGRAMS

INTO OSU offers customized, short-term programs for groups of 10 or more. We offer English teacher training programs and full-time academic programs to improve English and experience US university study. We also offer part-time programs available on a B2 or tourist visa exploring various focus areas.

To learn more about our current programs or to submit a request for a customized program, please visit intoosu.oregonstate.edu/special-programs or email into.specialprograms@oregonstate.edu



Start Dates	Fall 2021	Winter 2021	Spring 2022	Summer 2022
Program				
Academic English				
Study Abroad with English Part 1	Sep 15, 2021	Dec 28, 2021	Mar 23, 2022	Jun 15, 2022
Study Abroad with English Part 2				
Visiting International Student Program				



OSU UNDERGRADUATE SCHOLARSHIPS

ENTRY SCHOLARSHIP

Entry Routes: International Direct (ID), International Year One (IYO), Undergraduate Transfer Program (UTP), Transfer

Scholarship	Amount	ID	IYO	UTP	Transfer	Eligibility, How to Apply & Notes
Provost's Scholarship for Excellence	\$6,000/year, up to 4 years	●	●	●	●	<ul style="list-style-type: none"> No application process New students with GPA of 3.5+ qualify for consideration or IB Diploma score of 30+ or A-levels w/ minimum of two B's and one C Renewable with a 3.0 GPA No application or action required for renewal
Regional Scholarship	Variable one-time scholarship	●	●	●	●	<ul style="list-style-type: none"> No application process Based on availability according to region of the world This scholarship is not merit-based To check availability, connect with your local OSU representative or contact intladmit@oregonstate.edu
Honorary Scholarship for Leadership <small>In honor of our former colleagues Ian Sanders, Nancy Heiligman and Mark McCambridge who exhibited leadership and dedication to Higher Education</small>	\$2,000 one-time scholarship	●	●	●		<ul style="list-style-type: none"> Application process based on merit and evidence of leadership New students with a GPA of 3.0+ qualify for consideration Combinable with any scholarships with the exception of the OSU 150 award To check availability, connect with your local OSU representative or contact internationalscholarships@oregonstate.edu

PLUS UNDERGRADUATE CONTINUED SUCCESS SCHOLARSHIP

Continued Success Scholarship	\$3,000 or \$5,000/year, up to 3 years	●	●	●		<ul style="list-style-type: none"> No application process and based on cumulative GPA of ID, IYO or UTP Students who achieve 3.75 – 4.0 GPA will automatically qualify for \$5,000 annual scholarship Students who achieve 3.5 – 3.74 GPA will automatically qualify for \$3,000 annual scholarship Renewable with 3.5 GPA. No action required for renewal. Students already receiving the Provost's Scholarship for Excellence are not eligible for this scholarship
--------------------------------------	--	---	---	---	--	--

GRADUATE SCHOLARSHIPS

ENTRY SCHOLARSHIP

Entry Routes: Graduate Pathway (GPW), Master's International Direct (MID)

Scholarship	Amount	GPW	MID	Eligibility, How to Apply & Notes
Regional Scholarship	Variable one-time scholarship	●	●	<ul style="list-style-type: none"> No application process Based on availability according to region of the world This scholarship is not merit-based To check availability, connect with your local OSU representative or contact intladmit@oregonstate.edu

PLUS GRADUATE CONTINUED SUCCESS SCHOLARSHIP

Continued Success Scholarship	\$3,000 or \$5,000/year, up to 2 years	●	●	<ul style="list-style-type: none"> No application process and based on cumulative GPA of GPW or MID Students who achieve 3.75 – 4.0 GPA will automatically qualify for \$5,000 annual scholarship Students who achieve 3.50-3.74 GPA will automatically qualify for \$3,000 annual scholarship Renewable with a 3.5 GPA. No action required for renewal
--------------------------------------	--	---	---	---

Scholarship amounts and availability requirements are subject to change. All OSU scholarships listed above require a non-resident tuition status. You must be accepted to the university first in order to receive a scholarship. Amounts subject to change. Limited awards at maximum value.



OSU offers four terms per year (Fall, Winter, Spring, Summer). Each term is around 11 weeks or three months long.

Undergraduate Programs

Undergraduate Programs include International Year One (IYO), Undergraduate Transfer (UTP) and International Direct (ID)

Program Length	1 Term	2 Terms	3 Terms	4 Terms
	UTP	UTP	ID, IYO, UTP	IYO, UTP
TUITION AND FEES	\$12,945	\$25,890	\$33,775	\$40,480
Housing and Meals*	\$4,330	\$8,660	\$12,990	\$17,320
Books and Supplies	\$670	\$1,300	\$2,000	\$2,500
Insurance	\$1,450	\$2,900	\$4,350	\$5,800
LIVING EXPENSES	\$6,450	\$12,860	\$19,340	\$25,620
TOTAL EXPENSES	\$19,395	\$38,750	\$53,115	\$66,100

Note: prices may differ for Undergraduate transfers direct, please refer to intostudy.com/osu/costs or more information
* Housing and meals are based on estimated costs and may vary depending on housing and meal plans selected and personal preference

Graduate Programs

	Graduate Pathway			Graduate Pathway- MBA and MSB			Master's International Direct	Master's International Direct (MSB)	Graduate Direct-Engineering		Graduate Direct-MBA	
Program Length	1 Term	2 Terms	3 Terms	1 Term³	2 Terms	3 Terms	1 Term	1 Term	1 Term	3 Terms¹	1 Term	3 Terms²
TUITION AND FEES	\$12,380	\$24,760	\$32,290	\$15,370	\$30,740	\$40,075	\$12,390	\$15,370	\$12,380	\$30,650	\$15,370	\$39,710
Housing and Meals*	\$4,330	\$8,660	\$12,990	\$4,330	\$8,660	\$12,990	\$4,330	\$4,330	\$4,330	\$12,990	\$4,330	\$12,990
Books and Supplies	\$670	\$1,300	\$2,000	\$670	\$1,300	\$2,000	\$670	\$670	\$670	\$2,000	\$670	\$2,000
Insurance	\$1,450	\$2,900	\$4,350	\$1,450	\$2,900	\$4,350	\$1,450	\$1,450	\$1,450	\$4,350	\$1,450	\$4,350
LIVING EXPENSES	\$6,450	\$12,860	\$19,340	\$6,450	\$12,860	\$19,340	\$6,450	\$6,450	\$6,450	\$19,340	\$6,450	\$19,340
TOTAL EXPENSES	\$18,830	\$37,620	\$51,630	\$21,820	\$43,600	\$59,415	\$18,840	\$21,820	\$19,030	\$49,990	\$21,820	\$59,050

Academic English

	Academic English/Study Abroad with English Part 1	Visiting International Student Program/Study Abroad with English Part 2
Program Length	1 Term	1 Term
TUITION AND FEES	\$6,005	\$11,260
Housing and Meals*	\$4,330	\$4,330
Books and Supplies	\$500	\$670
Insurance	\$1,450	\$1,450
LIVING EXPENSES	\$6,280	\$6,450
TOTAL EXPENSES	\$12,285	\$17,220

All prices are estimated from 2020-21 and are subject to change. Please visit www.intostudy.com/osu/costs for exact pricing.

For details about Terms and Conditions, Country Scales and English Waivers, visit www.intostudy.com/osu/terms

* Housing and meals are based on estimated costs and may vary depending on housing and meal plans selected and personal preference. Living expenses includes \$870 meal plan per term.
¹Based on 12 credits per term
²Based on 9 credits per term
³1-term Graduate Pathway is MBA only

HOW TO APPLY

Choose from two easy ways to apply

1 Apply via your local INTO educational counselor

2 Apply online
Complete our online application form:

INTO OSU Programs:
apply.intostudy.com/osu

International Direct (Undergraduate):
apply.intostudy.com/osu

Direct Graduate:
oregonstate.force.com/GradAppLogin

Master's International Direct:
apply.intostudy.com/osu

We also offer online programs, for more information contact your INTO Regional Representative or Education Counselor.



INTO Oregon State University

Oregon State University
1701 SW Western Boulevard
Corvallis, OR 97333
USA

T: +1 541 737 2464
F: +1 541 737 4220
E: intladmit@oregonstate.edu

www.intostudy.com/osu

PATHWAY ADMISSION
www.intostudy.com/osu

DIRECT ADMISSION
admissions.oregonstate.edu/international

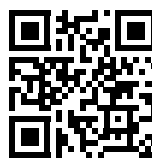


For more information on International Admissions, scan here:

- facebook.com/INTO.oregonstate
- twitter.com/INTO_OSU
- instagram.com/INTOoregonstate
- myin.to/OSU_YouTube

Chat online

with our students!



www.intostudy.com/chat-osu



WeChat



YOU VISIT VIRTUAL TOUR
www.youvisit.com/tour/oregonstate



Through innovative partnerships with leading universities, we expand opportunities for higher education, ensuring success and transforming the lives of our students and staff.



Working across the globe, INTO Giving supports projects that increase access to education and improve the quality of teaching and learning. For more information, visit www.into-giving.com

Discover more online

For counselors:
partnerportal.intoglobal.com/osu

For students:
www.intostudy.com/osu

Connect with us



Education counselor's stamp