

**International Guide**  
**2020**



**THINK**  
**BEYOND**



**UNIVERSITY OF LEEDS**



# OUR CAMPUS BY THE CITY

## **PARKINSON BUILDING**

The iconic landmark building of the University

## **LIDLAW LIBRARY**

Designed for our undergraduate students

## **EDWARD BOYLE LIBRARY**

Includes a postgraduate-only Research Hub

## **LEEDS DOCTORAL COLLEGE**

Coordinates postgraduate research support and activities

## **THE EDGE**

Swimming pool, gym and sports halls

## **ST GEORGE'S FIELD**

A beautiful green space in the heart of campus

## **LEEDS UNIVERSITY UNION**

Shops, cafés, music venues and home to our clubs and societies

**First Direct Arena**  
Leeds' 13,500-capacity music venue

**Leeds city centre**  
Only a 10-minute walk from campus

**Leeds train station**

**Parkinson Building**

**Laidlaw Library**

**The Edge**

**Leeds Doctoral College**

**Edward Boyle Library**

**Leeds University Union**

**St George's Field**





**IMPORTANT INFORMATION**

Information provided by the University, such as in presentations, University brochures and on the University website, is accurate at the time of first disclosure. However, courses, University services and content of publications remain subject to change. Changes may be necessary to comply with the requirements of accrediting bodies or to keep courses contemporary through updating practices or areas of study. Circumstances may arise outside the reasonable control of the University leading to required changes. Such circumstances include industrial action, unexpected student numbers, significant staff illness (where a course is reliant upon a person's expertise), unexpected lack of funding, severe weather, fire, civil disorder, political unrest, government restrictions and serious concern with regard to the transmission of serious illness making a course unsafe to deliver. After a student has taken up a place with the University, the University will look to give early notification of any changes and try to minimise their impact, offering suitable alternative arrangements or forms of compensation where it believes there is a fair case to do so. Offers of a place to study at the University will provide up-to-date information on courses. The latest key information on courses, entry requirements and fees can be found at [courses.leeds.ac.uk](https://courses.leeds.ac.uk) and [www.leeds.ac.uk/pgp](https://www.leeds.ac.uk/pgp). Please check this website before making any decisions.

# CONTENTS

<b>WELCOME TO LEEDS</b>	<b>4</b>	<b>LEEDS AND YORKSHIRE</b>	<b>32</b>
		Introducing Leeds	33
		City life	34
		Living in Leeds	36
<b>REDEFINING EXCELLENCE</b>	<b>6</b>	<b>YOUR STUDY OPTIONS</b>	<b>38</b>
Research that makes a difference	7	International Foundation Year routes	39
Research-based learning	9	Undergraduate study	40
Inspirational teaching	10	Masters study	40
Leading research facilities	11	Postgraduate research	40
Your learning environment	12	Our subject areas	41
<b>PREPARE FOR YOUR FUTURE</b>	<b>14</b>	<b>NEXT STEPS</b>	<b>45</b>
Develop your employability	15	Costs to consider	46
		Funding	47
<b>AN INTERNATIONAL WELCOME</b>	<b>20</b>	Applying to study here	48
Link to Leeds	21	How to apply	50
International student support	22	<b>NOTES</b>	<b>55</b>
<b>CAMPUS LIFE</b>	<b>25</b>	<b>MAP AND HOW TO FIND US</b>	<b>56</b>
On campus	26		
Students' union	28		
Sport and fitness	29		
Wellbeing and support	30		





## WELCOME TO LEEDS

Come and join us in one of the UK's most diverse and student-friendly cities. Be part of a world top 100 university, with excellent teaching and a focus on your future.

The University of Leeds is a leading UK university, established in 1904. We're a global community, with staff and students from more than 170 countries, so you'll have chance to meet and work with people from all over the world.

Studying at Leeds, you can expect to be challenged academically and personally. We'll help you develop vital employability skills and focus on your career. And we'll encourage you to take advantage of the amazing opportunities on offer.

You'll benefit from some of the best university facilities and you'll be supported every step of the way. Whether you're interested in an undergraduate or postgraduate qualification, we'll help you reach your potential.

Get the most up-to-date information on our courses and postgraduate research opportunities at [courses.leeds.ac.uk](https://www.leeds.ac.uk/courses) and [www.leeds.ac.uk/pgr](https://www.leeds.ac.uk/pgr)

*Top 100  
university in  
the world*

QS World University  
Rankings 2020



## FIND OUT MORE

Our staff regularly travel overseas to meet with prospective students and give advice about studying at Leeds. Find out when a University of Leeds representative is visiting an education fair or event in your country.

[www.leeds.ac.uk/visitstoyourcountry](https://www.leeds.ac.uk/visitstoyourcountry)

We have offices in China, India, Japan, Malaysia and Nigeria, as well as a global network of representatives who can advise you about applying to study at the University of Leeds.

[www.leeds.ac.uk/meetus](https://www.leeds.ac.uk/meetus)

If you're in the UK, University open days are a great way to explore our facilities and learn what it's like to study here. Alternatively, book a campus tour by one of our international students at a time that suits you, or follow our self-guided tour. To get the most out of your visit, contact the academic school for your course in advance to arrange to meet a member of the academic team.

[www.leeds.ac.uk/visitus](https://www.leeds.ac.uk/visitus)

## TALK TO US

+44 (0)113 343 2336  
[study@leeds.ac.uk](mailto:study@leeds.ac.uk)

## CONNECT WITH US

   /universityofleeds

 @UniversityLeeds



 Talk to current international students about studying here.  
[www.leeds.ac.uk/linktoleeds](https://www.leeds.ac.uk/linktoleeds)

# REDEFINING EXCELLENCE

Learn from experts. Shape your learning with the latest research in your field. Benefit from excellent teaching and facilities.

**Over 80%**  
of our research is rated  
'world leading' or  
'internationally excellent'

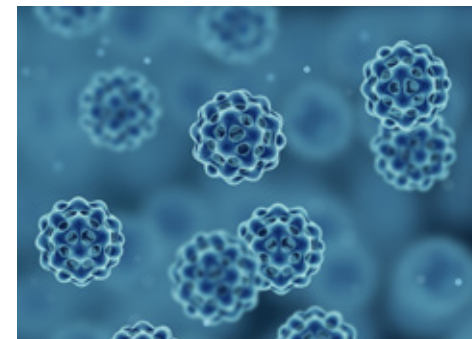
(REF 2014)

## RESEARCH THAT MAKES A DIFFERENCE

Our research tackles the big issues affecting today's world. Here are some of the ways our discoveries are making a real difference to society.



We're pioneering a technique to avoid rejection of transplant tissue by combining our medical engineering and medical immunology expertise.



Leeds scientists are developing the use of microbubbles to deliver chemotherapy with fewer side effects, bringing together research expertise from physics, engineering and medicine.

Discover more about our leading research at [www.leeds.ac.uk/research](http://www.leeds.ac.uk/research)



Photo: Dr A. E. Hogg, CPOM, University of Leeds

An international team, including researchers from Leeds, are estimating sea level rises more accurately using satellite data to generate information on polar ice thickness and melting rates.



Photo: Keo Theasrun, Documentation Center of Cambodia

We're supporting young conflict survivors across the world through an Arts and Humanities Research Council-funded project, helping them use creative media to understand conflict and share their experiences.



# MAKE AN IMPACT



“My lecturers are involved in the latest robotics research, which impacts our lives in a big way. It’s an exciting area – I learn the theory in the classroom and then I get to apply it practically in the lab. I enjoy the hands-on element of working with electronics and mechanics. For one of my projects I’m designing a robotic arm for a drone that can pick up and place objects. It’s great how you can think outside the box at Leeds.”

#### Jefferson Sanchez

Pictured in the National Instruments Active Learning Laboratory

Learn more from Jefferson about his experience of research-based learning at [www.leeds.ac.uk/jeffersonsanchez](http://www.leeds.ac.uk/jeffersonsanchez)

## RESEARCH-BASED LEARNING

You’ll join a leading UK research university and one of the top 100 universities in the world (QS World University Rankings 2020).

We’re a founding member of the prestigious Russell Group of 24 research-intensive universities. This means research is at the heart of your learning at Leeds, whatever your level of study.

Our courses are designed and taught by staff who are experts in their field. Their research feeds directly into your course, so you can hear about the latest breakthroughs, even before they’re published.

As an undergraduate or Masters student, you’ll carry out a research project, giving you the chance to develop and apply your research skills and make your own discoveries. We’ll encourage you to develop a researcher mindset – investigating, questioning and improving.

As a postgraduate researcher, you can be confident of structured supervision, which will both challenge and support you. Our Doctoral College brings together all the support services and opportunities to enhance your research, your development and your overall experience at Leeds.

We attract significant research funding and more than 80% of our research is rated ‘world leading’ or ‘internationally excellent’ in the most recent Research Excellence Framework (REF 2014). You can be part of this. We need researchers at all levels with exciting new ideas and approaches. Over half our submissions to REF 2014 included contributions from our PhD researchers.



**Top 10**  
UK university for  
research power

REF 2014

## INSPIRATIONAL TEACHING

Teaching at Leeds is ranked at the highest national standard. We'll challenge you to explore, question and discover, and to be an active partner in your own learning.

We recognise and reward teaching excellence, and many of our academics hold external awards such as National Teaching Fellowships.

We're gold-rated in the government's Teaching Excellence Framework – the highest award possible.



We also focus on how you learn.

### You'll benefit from:

- a combination of lectures, seminars and tutorials, with time for independent study, project work, laboratory practicals or fieldwork
- lecture theatres and seminar rooms with the latest digital learning technology to facilitate collaborative and interactive learning
- access to video and audio recordings of most of your lectures and other learning activities through our Virtual Learning Environment.

At undergraduate level, you'll broaden your studies beyond your subject area through discovery themes.

[leedsforlife.leeds.ac.uk/broadening](https://leedsforlife.leeds.ac.uk/broadening)



*“Leeds has invested heavily in digital technology and we're innovating the way we teach. I'm always trying to find ways to improve the student experience, whilst making sure we are equipping our students with the skills and knowledge to better themselves and their communities.”*

**Dr Emilee Simmons**

Senior Lecturer in Entrepreneurship

Read more about Emilee's experience of the University's approach to teaching and learning at [www.leeds.ac.uk/emilee](https://www.leeds.ac.uk/emilee)

## ACADEMIC SUPPORT

**There's lots of support to help you adjust to studying here, through:**

- English language support – available before you start and while you're studying – see pages 13 and 49
- academic study skills – see page 17
- your personal tutor (undergraduate or Masters) or supervisor (postgraduate research).

## LEADING RESEARCH FACILITIES

Enhance your learning with the outstanding facilities of a leading research-intensive university.

Our cutting-edge facilities could benefit you directly or indirectly through the data and insights they provide.

Whatever your specialism, we'll encourage you to collaborate with others in different disciplines to create new knowledge and insights.

**Facilities that may help shape your studies at Leeds include:**

### LABORATORIES AND CLINICAL FACILITIES

Science, technology, engineering and maths students can develop their knowledge, and techniques with industry-standard clinical and laboratory facilities.

### STUDIO, WORKSHOP AND PERFORMANCE SPACES

Art, design, theatre and music students can refine their skills in fully equipped studios, workshops and performance spaces.

### M&S COMPANY ARCHIVE

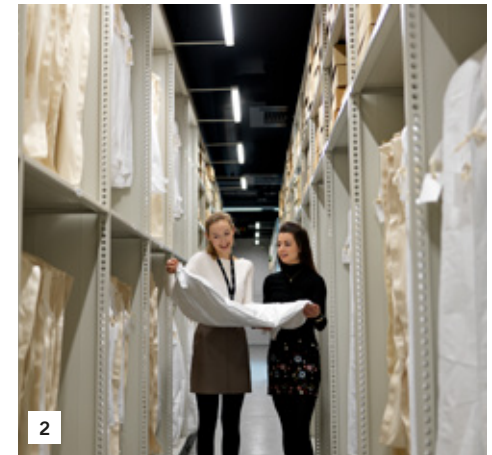
The archive of this well-known British company is housed on campus and offers exciting research opportunities across disciplines, from business to textiles.

### SPECIAL COLLECTIONS

The University's Special Collections contains rare books, manuscripts and art for primary research.



1



2



3

1. University of Leeds Driving Simulator
2. M&S Company Archive
3. Steinway pianos in the School of Music, which has All-Steinway School status





## YOUR LEARNING ENVIRONMENT

You'll find everything you need to support your studies. We're continually investing in our campus – from new laboratories and lecture theatres to one of the most impressive libraries in the UK.

### LIBRARIES

The University Library is one of the UK's major academic research libraries. There are four libraries on campus, each offering a different working environment. They're equipped with the latest technology and have spaces for group and individual study.

Our Laidlaw Library was purpose built for undergraduate students. The Research Hub in the Edward Boyle Library is a dedicated space for researchers and postgraduates, with extra large study desks – especially useful when writing up your research. The Brotherton Library is the oldest University Library, a beautiful historic space in which you can work and access rare books and manuscripts in the Special Collections Research Centre.

You can also benefit from friendly advice and academic skills support from expert Library staff.

[library.leeds.ac.uk](http://library.leeds.ac.uk)



### TECHNOLOGY

Free high-speed wi-fi across campus and 24-hour computer clusters let you study when and where suits you. Teaching spaces with the latest digital technology help you to learn collaboratively and interactively.

You'll have access to a range of standard and specialist software, including Office 365, linked to your University account and available anywhere. You can access personalised content (like your timetable and library record) through the UniLeeds app and you'll find lots of help and support online and in person from our IT Service Desk.

[it.leeds.ac.uk](http://it.leeds.ac.uk)



### ENGLISH AND OTHER LANGUAGES

Improve your English with the University's Language Centre. A pre-sessional course can help you meet the English language requirements of your course (see page 48). Our teaching staff will help you improve your academic English and prepare you for life at a UK university.

Once you're here, you can use our Language Zone, a language resource centre. There are learning materials in more than 50 languages, including English. You can access books, magazines, audio, video and language learning software, and you can join language learning groups – all for free.

We also provide free English language workshops and one-to-one consultations alongside your degree.

[www.leeds.ac.uk/languagecentre](http://www.leeds.ac.uk/languagecentre)

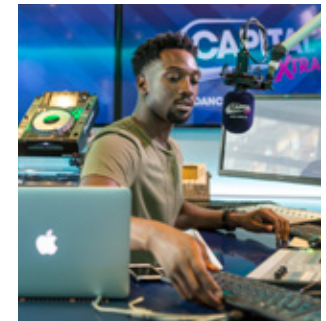


# PREPARE FOR YOUR FUTURE

You're focused on your future.  
We are too. Make the most of  
everything at Leeds to help  
you succeed.

*Top 10*  
*most targeted UK*  
*university by graduate*  
*recruiters*

The Graduate Market in 2019,  
High Fliers Research



## DEVELOP YOUR EMPLOYABILITY

We understand that developing your employability alongside your academic studies is a priority. You'll have lots of opportunities to build your practical and transferable skills, and to benefit from careers events and advice.

We design our courses to be relevant to industry. And our well-established links with leading organisations mean you can benefit from work placement opportunities and talks by industry experts.

Some courses have professional accreditation and industrial advisory boards to ensure they meet employer needs. Some of our tutors are industry consultants and practitioners, and will pass on this experience to you in their teaching.





## GAIN PRACTICAL EXPERIENCE

You can build your practical skills and understanding through:

- project work, fieldwork or work placements – included in many of our undergraduate and postgraduate courses
- short placement or internship opportunities outside your course – advertised through our Careers Service and your academic school
- part-time jobs – advertised through the Union's Joblink
- an undergraduate work placement year – taking an extra year to complete your degree, in order to work in a business or organisation. Check if the undergraduate degree you're interested in offers this at **courses.leeds.ac.uk**
- internship and ambassadorial opportunities at the University – a great way to build your skills and confidence while being paid.

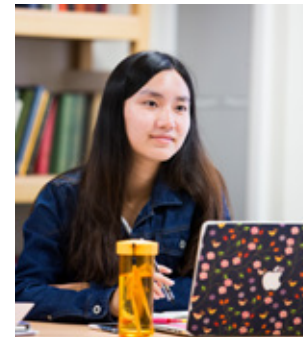
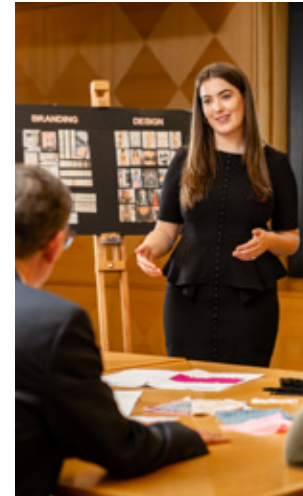
There are restrictions on the work (paid and unpaid) international students can do. Check what your visa allows and talk to our International Student Office if you're unsure.



*“Having studied analytical philosophy, I was able to put this into practice during my year at IBM. I learnt how to code and ran workshops to teach others how to do it. A real highlight was being part of IBM's team at Wimbledon, analysing matches and looking at how players were performing. I'm really thrilled to have been offered a place on the IBM graduate programme, as I can look forward to a job that I'll enjoy.”*

**Demetra Brady**

Find out more from Demetra about her work experience at **[www.leeds.ac.uk/demetrabrady](http://www.leeds.ac.uk/demetrabrady)**



## DEVELOP TRANSFERABLE SKILLS

Transferable skills – such as spoken and written communication and teamworking – are important whatever degree you're studying. You'll use them throughout your career and many employers look for them.

Your course or research will help you develop skills like problem-solving, analytical skills and creative thinking.

Free help and training from our Skills@Library team can help you strengthen your skills in areas like report writing, presenting and time management.

Student clubs and societies (see page 28) can also offer opportunities to develop your personal motivation, teamworking and leadership style – as well as have fun.





### Volunteering

Volunteering is a great way to broaden your experience and develop transferable skills while giving something back to the local community. There are lots of volunteering opportunities you can get involved in once you're here. More than 3,500 of our students volunteer for local community groups and charities every year.

### Enterprise at Leeds

There are opportunities to develop your entrepreneurial skills as part of your studies – on an enterprise-related course or (for undergraduates) through discovery themes and modules (see page 10). Outside your studies, Spark, our business start-up service, can help you with advice, mentoring and potential funding. Our Year in Enterprise programme lets you take a year out of undergraduate studies to develop your business.

[www.leeds.ac.uk/studententerprise](http://www.leeds.ac.uk/studententerprise)



### Study abroad

Most of our undergraduate courses offer you the chance to study abroad as part of your degree. We have more than 300 university partners in over 40 countries. You could take part in a summer school in Europe, Asia or Latin America or extend your degree to include a study abroad year.

[www.leeds.ac.uk/studyabroad](http://www.leeds.ac.uk/studyabroad)

## CAREER ADVICE AND INFORMATION

Our Careers Service can help you prepare for the career you want through advertised opportunities, specialist advice and a calendar of events.

Make use of online resources and personal support to understand your strengths and market yourself effectively. Get advice on résumé writing, job applications and interview skills. Our Leeds for Life website brings together lots of opportunities and helps you record your experiences, so you can talk clearly and confidently to potential employers about your skills and achievements.

[leedsforlife.leeds.ac.uk](http://leedsforlife.leeds.ac.uk)

Our many careers fairs, presentations, workshops and events can help you understand what employers are looking for and make valuable connections.

You'll also find internships, placements and support finding graduate jobs through our Careers Service website.

[careerweb.leeds.ac.uk](http://careerweb.leeds.ac.uk)

### Help from our alumni

As a student at Leeds, you can access one of the biggest alumni communities of any UK university – a global network of over 265,000 Leeds graduates in more than 190 countries. The Leeds Network is an online networking tool which allows you to connect with alumni for practical careers advice and mentoring. You can also benefit from talks, internship opportunities and scholarships provided by our alumni.

## BUILDING YOUR RESEARCHER PROFILE

As a postgraduate researcher, sharing your research and building your professional profile (including through conference presentations) will be a key part of your success. Our Doctoral College and your academic school offer opportunities to connect with other researchers and training to help you realise your professional goals.


[www.leeds.ac.uk/doctorscollege](http://www.leeds.ac.uk/doctorscollege)



*“I'm looking forward to going to some conferences this year and meeting people doing similar work. Networking is very important when you are doing any kind of research. In our school they organise a lot of seminars and talks so you not only get to know people from your very specific area but other people too. There are socials as well after seminars and you can always learn from others so that's great.”*

**Andrea Vidal Dura**

Postgraduate researcher in  
biogeochemistry

 Read more about Andrea's experience of networking at [www.leeds.ac.uk/andreavidaldura](http://www.leeds.ac.uk/andreavidaldura)



# AN INTERNATIONAL WELCOME

Advice, help and services  
– before you arrive and  
when you're here.

## MAKING CONNECTIONS



### LINK TO LEEDS

Talk directly to some of our current international students about what it's like to study here. Connect with our Link to Leeds ambassadors through live chats, email, instant messaging and social media.

[www.leeds.ac.uk/linktoleeds](http://www.leeds.ac.uk/linktoleeds)

“Link to Leeds lets you connect with current students and ask them anything about the University or the city. I used Link to Leeds when I was in Brazil and thinking of studying here. After talking to a Leeds student, I knew it was exactly what I wanted to do. Now I use my own experience to answer other people's questions about my course, studying here and life in Leeds.”

**Jessica Martins**

**Link to Leeds ambassador**

Pictured leading a campus tour



## INTERNATIONAL STUDENT SUPPORT

We've been welcoming international students for over 100 years, so you can be sure of experienced help and support.

**Top 40**  
most international  
university

Times Higher Education 2019

### BEFORE YOU ARRIVE

Our team of immigration experts can provide free advice on immigration law and requirements. They can also help you with the process of applying for your visa.

[www.leeds.ac.uk/immigration](http://www.leeds.ac.uk/immigration)

We'll provide information and services to help you prepare for your arrival and make sure your journey is as easy and stress-free as possible.

[www.leeds.ac.uk/travel](http://www.leeds.ac.uk/travel)

Staff regularly travel overseas to meet with prospective students and to give advice on life as an international student in Leeds.

[www.leeds.ac.uk/visits toyourcountry](http://www.leeds.ac.uk/visits toyourcountry)

We have offices in China, India, Japan, Malaysia and Nigeria, as well as a global network of representatives who can advise you about studying here.

[www.leeds.ac.uk/meetus](http://www.leeds.ac.uk/meetus)

# FEEL

# AT HOME



“ I was a bit nervous coming to university because I'd never travelled alone before. It was a big relief when I saw the University of Leeds sign at the airport. The team were very friendly and helped me to get to my accommodation, where the staff helped me to settle in. The best part has been the friends I've made. You'll never feel alone in Leeds because your circle of friends can become your family.”

**Keshav Bansal**

Pictured at Leeds Bradford Airport

Learn more from Keshav about being an international student at Leeds at [www.leeds.ac.uk/keshavbansal](http://www.leeds.ac.uk/keshavbansal)





### ARRIVING IN LEEDS

When you arrive in Leeds, our Welcome team will give you all the information you need to help you settle in during your first few days. Our free Meet and Greet service runs on certain dates in September. The team can meet you at Leeds Bradford Airport or Leeds train station to help you get to your accommodation.

Before teaching starts in September you'll be invited to our International Welcome Week, a free programme of useful information sessions and social events. It's an ideal way to introduce you to British culture and help you make new friends.

[www.leeds.ac.uk/internationalarrival](http://www.leeds.ac.uk/internationalarrival)



### ONGOING SUPPORT

The International Student Office will continue to support you throughout your time at Leeds. We're here to help all year round, so you can enjoy living in the UK. Find out more about being an international student at Leeds at [www.leeds.ac.uk/internationalstudents](http://www.leeds.ac.uk/internationalstudents)

### SETTLING IN

There are lots of ways to make friends at the University. You can enjoy your favourite interests and hobbies or try some new ones through the various clubs and societies at Leeds University Union (see page 28). Meet students of many nationalities at our weekly Global Café or bring your partner or family to our monthly Coffee Connections event to meet other students and staff and their families. Explore amazing nearby countryside through weekend walking trips as part of the Get Out, Get Active programme (see page 29). Or get a taste of British life by visiting a family in their own home as part of the HOST UK programme.

# CAMPUS LIFE

Our single-site campus is just a short walk away from the centre of our thriving, multicultural city.

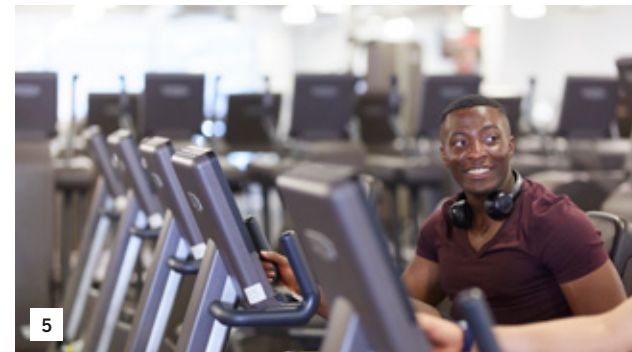
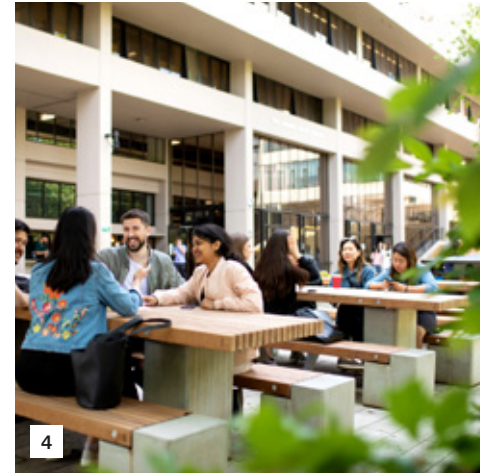
*3rd*  
in the UK for  
student experience

Times Higher Education  
Student Experience  
Survey 2018



# ON CAMPUS

Enjoy great sports facilities, social spaces, entertainment and culture, with friends from around the world – all right here on campus.



1. The Stanley & Audrey Burton Gallery
2. Common Ground café, a space to relax in Leeds University Union
3. Learn about growing food in our sustainable garden
4. Café space outside the Edward Boyle Library
5. The gym at The Edge, our £13.5m indoor sports facility





## STUDENTS' UNION

You'll join one of the best and most active students' unions in the country. Their mission is to make sure you love your time at Leeds.

Leeds University Union brings together our student community and is 100% student led. It's a place to meet, work, socialise and relax. It also offers independent help, advice, support and representation.

The Union building is in the middle of campus. You can buy most things there – from everyday groceries and University clothing to books and stationery. There's even a market selling local produce right outside the Union every Monday in term time.

The Union has cafés, bars and clubs, as well as theatres for student performances, live entertainment, comedy nights and film screenings. Union venues are also a destination for top bands and artists.

### GET INVOLVED

With more than 300 student-led clubs and societies, you'll find like-minded people, whatever your interests. Football, debating, theatre, gaming, dance, photography, skydiving, even Quidditch are just a few of your options. There are different national and faith societies too. Give it a Go sessions are a great way to try something new. And if you and your friends want to take part in an activity which doesn't have a club, the Union will help you set one up.

[www.luu.org.uk](http://www.luu.org.uk)

*More than 300  
clubs and societies  
for you to join*



## SPORT AND FITNESS

Keep fit, unwind and socialise with a whole range of sport and fitness opportunities.

The Edge, our indoor sports facility on campus, has a 250-station gym with the latest Technogym equipment and Sky TV, a 25m swimming pool, sauna and steam room, sports halls, climbing wall and more than 220 classes a week during term time.

[sport.leeds.ac.uk/the-edge](http://sport.leeds.ac.uk/the-edge)

There are excellent outdoor sports facilities at nearby Sports Park Weetwood and Bodington playing fields, including a 1.6km outdoor-lit cycling circuit. Two outdoor centres in the Lake District and the Yorkshire Dales offer hiking, caving, mountain biking and climbing.

[sport.leeds.ac.uk/facilities](http://sport.leeds.ac.uk/facilities)



*The Edge –  
Education Facility  
of the Year*

National Fitness Awards 2018

### GET INVOLVED

There are more than 60 sports clubs at Leeds, offering a chance to represent the University either individually or in a team in the British Universities and Colleges Sports (BUCS) leagues. Our Sport Scholarship programme supports elite athletes to achieve both sporting and academic excellence.

Our social leagues are a great way to play competitively against other student or staff teams, while our weekly social sport sessions offer non-competitive fun without a regular commitment. The Get Out, Get Active programme gives you a chance to meet new people while exploring Yorkshire.

[sport.leeds.ac.uk/sport](http://sport.leeds.ac.uk/sport)



## WELLBEING AND SUPPORT

The University offers lots of resources and information to support you.

Our Student Services Centre can help and advise you on accommodation and registration, fees and funding, and more. Our For Students website will direct you to all the support services on offer.

[students.leeds.ac.uk](http://students.leeds.ac.uk)

Leeds University Union offers impartial help and support with any problems you have as a student. The team specialises in housing, money and academic concerns, but can support you with anything. Their help is free and completely independent of the University.

[www.luu.org.uk/student-advice](http://www.luu.org.uk/student-advice)

### MEDICAL CARE

Leeds Student Medical Practice is a National Health Service (NHS) practice which cares for students and their immediate families.

It's close to campus and offers all the usual general practitioner (GP) services. Read their advice for international students.

[www.leedsstudentmedicalpractice.co.uk/international-students](http://www.leedsstudentmedicalpractice.co.uk/international-students)

If you need a visa to study in the UK, you will have to pay an immigration health surcharge when you make your visa application. This entitles you to health services under the NHS. The surcharge you pay is based on the length of your visa.

[www.gov.uk/healthcare-immigration-application](http://www.gov.uk/healthcare-immigration-application)



### STUDENT MENTAL HEALTH AND WELLBEING

You can access free professional and confidential counselling, wellbeing and mental health support in a range of ways, including groups, workshops, single-session consultations, short-term counselling and web-based self-help resources.

[students.leeds.ac.uk/supportandwellbeing](http://students.leeds.ac.uk/supportandwellbeing)

### SUPPORT FOR DISABLED STUDENTS

If you are a disabled student, we'll work with your academic school and other University services to ensure that we meet your needs and put in place any reasonable adjustments.

Don't wait until you start your course, contact us early so we can discuss your needs and arrange the right support before you get here.

[students.leeds.ac.uk/disabledstudents](http://students.leeds.ac.uk/disabledstudents)

### CHILDCARE ON CAMPUS

Bright Beginnings Childcare Centre, on campus, offers places for children between the ages of three months and five years (preschool). There's also a playscheme in school holidays for children aged between three and 12 years.

[www.brightbeginningschildcare.co.uk](http://www.brightbeginningschildcare.co.uk)

### MULTIFAITH CAMPUS

There are dedicated spaces across campus for prayer and quiet contemplation. In addition, the Emmanuel Centre is a place of welcome and friendship, offering support to you while you're here. You can join in with regular events or talk in confidence to one of our chaplains, who have different faith backgrounds.

[students.leeds.ac.uk/prayerandcontemplation](http://students.leeds.ac.uk/prayerandcontemplation)



# LEEDS AND YORKSHIRE

A lively, cosmopolitan city in the centre of the UK. Easy access to London and mainland Europe. Beautiful countryside nearby. Just some of the reasons our students love Leeds.



## INTRODUCING LEEDS

Leeds is at the heart of the UK – a regional hub for business, culture and sport, with a rich industrial heritage and everything you'd expect from one of the country's largest and fastest-growing cities.

We're a multicultural city, home to people of many nationalities and faiths. You'll find places of worship to practise your religious beliefs and others who share them.

Food and ingredients from around the world are easy to find. Kirkgate Market in the city centre offers a huge range of fresh vegetables, fruit, spices and food from many different countries.

There are several specialist international supermarkets in the city centre and most large supermarkets sell international foods.

There are lots of parks and green space in and around the city and stunning countryside all around us, with the Yorkshire Dales and Peak District national parks, the North York Moors and the Lake District all within easy reach.

Leeds is well connected, nationally and internationally, with excellent transport links. It's only 30 minutes from Leeds Bradford international airport and one hour from Manchester airport. A rail service connects you to London and other parts of the country. There's good, safe transport around the city too. [www.leeds.ac.uk/citylife](http://www.leeds.ac.uk/citylife)



# CITY LIFE

## CULTURE

The city boasts museums, galleries, theatres, resident opera and ballet companies, historic sites and festivals

## MUSIC

On campus and around the city, from small clubs to a 13,500-capacity arena

## FOOD

World food at restaurants, cafés and food festivals, and international supermarkets

## SHOPPING

Historic arcades, modern malls and one of the largest indoor markets in Europe

## SPORT

Home to Yorkshire County Cricket Club, Leeds United Football Club and a national league rugby club. Host to international sporting events, like the Tour de Yorkshire cycle race

## NEARBY PLACES

Moorland and national parks, traditional towns and villages and Yorkshire's stunning coastline to explore



1



2



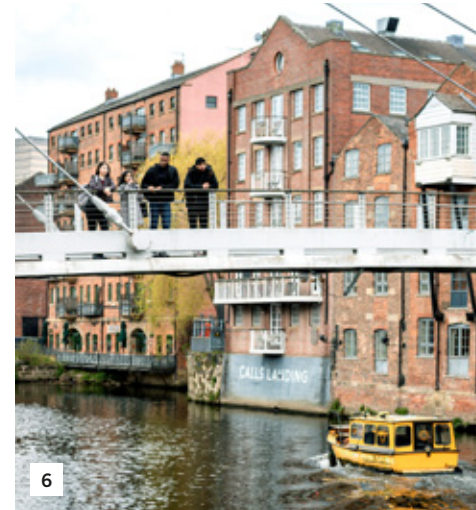
3



4



5



6



7



9



8

- 1. The Town Hall on the Leeds skyline
- 2. Live at Leeds music festival
- 3. Leeds Central Library and Leeds Art Gallery
- 4. Tour de Yorkshire cycle race
- 5. Woodhouse Moor, a nearby park
- 6. Leeds water taxi on the River Aire
- 7. The food hall in Trinity Leeds shopping centre
- 8. Scarborough, a seaside resort on the East coast
- 9. Kirkstall Abbey, ruins of an 800-year-old Cistercian monastery





## LIVING IN LEEDS

Leeds is a great place to live, with a wide range of accommodation options. Whether you're looking for University or private accommodation, a flat, shared house or family home, we're confident you'll find something to meet your needs.

### *Our guarantee*

We guarantee\* single University accommodation for students paying international fees who apply before the deadline.

## UNIVERSITY ACCOMMODATION

Our University-owned accommodation can be a fantastic way to make new friends and feel part of our community. We offer a range of options, on and off campus, including postgraduate-only residences, different contract lengths and flexible payment methods.

Your rent includes all utility bills, internet access, contents insurance and membership of The Edge, our sports, health and fitness facility (not included in family or summer accommodation). All our accommodation has a 24-hour security service.

Read more about University-owned accommodation, including how and when to apply, at [accommodation.leeds.ac.uk](http://accommodation.leeds.ac.uk)

\*Restrictions apply relating to deadlines, residence, academic fee status and level of study.

*Leeds city centre  
– one of the UK's  
Best Places to Live*

The Sunday Times 2019



## PRIVATE ACCOMMODATION

Leeds has a wide range of good-quality private accommodation to suit all lifestyles and budgets.

The city centre offers smart, modern apartments perfect for city living. Headingley and Hyde Park are just a short walk or bus ride from campus and are popular with both students and academics. Several suburbs offer family homes, good schools and green spaces

Independent help and advice on all aspects of private accommodation is available from:

- Unipol, a student housing charity that works closely with the University
- the independent advice centre in the students' union.

[www.unipol.org.uk](http://www.unipol.org.uk)

[www.luu.org.uk/student-advice](http://www.luu.org.uk/student-advice)

# YOUR STUDY OPTIONS

Study with us at international foundation, undergraduate, Masters or postgraduate research level. Or get a taste of Leeds through our international summer school or short-term study programme.

## INTERNATIONAL FOUNDATION YEAR ROUTES

There are several international foundation year routes which allow you to progress to our undergraduate degree courses.

### UNIVERSITY OF LEEDS INTERNATIONAL FOUNDATION YEAR

The University of Leeds International Foundation Year is one of the most established and successful programmes of its type in the UK. For more than 30 years it has been helping high-achieving students realise their ambition of studying an undergraduate degree at the University of Leeds.

All your teaching is delivered by the academic team at the University of Leeds. You are taught on campus and have full access to University facilities. Depending on the degree course you want to study, you'll enrol on one of our six foundation year routes:

- Arts and Social Sciences
- Business
- Design
- Engineering
- Science and Healthcare
- Joint honours.

Alongside academic study skills and English, you will study subject-specific modules. These are tailored to your chosen degree to ensure you're fully prepared for year one of undergraduate study. Successful completion of the nine month, three term programme guarantees progression to more than 140 different degree courses across the University. [internationalfoundationyear.leeds.ac.uk](http://internationalfoundationyear.leeds.ac.uk)

### OTHER FOUNDATION YEAR OPTIONS

#### Leeds International Study Centre

If you don't meet the entry requirements for the University of Leeds International Foundation Year, you may still be eligible to apply for a foundation year programme run by the Leeds International Study Centre (ISC). ISC is delivered by Study Group at Leeds Beckett University.

The ISC International Foundation Year allows you to progress to year one of a range of University of Leeds undergraduate degrees in business, engineering, law or science. It will help you develop the skills and knowledge you need to succeed at university, and offers flexible entry requirements and start dates in January and September.

ISC also offers International Year One programmes in certain subjects, which allow you to progress to year two of some University of Leeds undergraduate degrees.

[www.leedsisc.com](http://www.leedsisc.com)

#### NCUK

You can choose to complete foundation year studies in your home country. The University of Leeds is an owner member of NCUK, which delivers undergraduate International Foundation Years, International Year One programmes and a Pre-Masters Preparation programme at teaching centres in countries across the world, including China, India, Nigeria and the UK amongst others.

[www.ncuk.ac.uk](http://www.ncuk.ac.uk)



## UNDERGRADUATE STUDY

Our undergraduate degrees offer a high level of academic knowledge, as well as great opportunities to develop your personal and professional skills. You can choose from single or joint honours and Integrated Masters courses. Many courses also allow you to extend your degree and spend a year on work placement or studying abroad.

On all our courses – single and joint honours – you carry out a final-year research project. On an Integrated Masters course, you study for four years: the first three years at undergraduate level and the final year at postgraduate level.

Find out about all our undergraduate courses at [courses.leeds.ac.uk](https://www.leeds.ac.uk/courses)

### SHORT-TERM STUDY

If you can't commit to degree study with us, you can still experience study at the University of Leeds and life in the UK.

Study at the University – for a semester or academic year – alongside home and international students taking full degree programmes. Choose from a wide range of undergraduate modules in all faculties. You may be able to transfer any credits you gain to your home degree.

[www.leeds.ac.uk/incomingstudyabroad](https://www.leeds.ac.uk/incomingstudyabroad)

### LEEDS INTERNATIONAL SUMMER SCHOOL

Immerse yourself in British culture with our exciting short programme. The Leeds International Summer School combines world-class tuition with academic field trips. You'll also enjoy social activities and cultural visits, both in Yorkshire and to famous UK cities.

[www.leeds.ac.uk/summer](https://www.leeds.ac.uk/summer)

## MASTERS STUDY

A Masters course offers the chance to study your subject at a higher level and enhance your career prospects.

Our full-time Masters courses normally last for 12 months. We offer some courses which are online only or distance learning (involving online study and some face-to-face meetings, subject to residential status).

You qualify as a Master of Arts (MA), a Master of Science (MSc) or other knowledge area. A Masters of Research (MRes) is an advanced, research-based degree which helps to prepare you for PhD study or a research career.

[www.leeds.ac.uk/masters](https://www.leeds.ac.uk/masters)

## POSTGRADUATE RESEARCH

Studying for a doctorate is about pushing the boundaries of knowledge. You'll conduct your own supervised research and will need to be passionate about your subject. A doctorate normally takes three years' full-time study to complete.

We offer a range of research degree opportunities across our schools and institutions.

[www.leeds.ac.uk/pgr](https://www.leeds.ac.uk/pgr)

## OUR SUBJECT AREAS

At Leeds, research is at the heart of our teaching. Our staff are experts in their fields and will share the latest thinking with you.

### UNDERGRADUATE AND MASTERS DEGREES

#### Accounting, Economics, Finance, International Business, Management and Marketing

Leeds University Business School is one of a small number of business schools worldwide to be triple-accredited by AACSB, AMBA and EQUIS. Our courses combine professional practice, up-to-date business knowledge and research expertise, preparing you for the competitive global job market.

#### Biological Sciences

A world-leading destination for the study of biological sciences, we're ranked top 20 in the UK for biosciences (Guardian University Guide 2020) and top 100 in the world for life sciences (The Times and Sunday Times Good University Guide 2019). Our courses are at the forefront of knowledge, reflecting the latest developments in the field of biological sciences.

Areas include: biology, molecular and cellular biology and biomedical sciences (undergraduate); and bioscience, conservation and precision medicine (postgraduate).

#### Chemistry, Physics and Natural Sciences

We're ranked top 10 in the UK for chemistry and 5th in the UK for physics and astronomy (Guardian University Guide 2020). Our active research environment means you'll be taught by academics who are making discoveries and contributing to scientific knowledge.

 Find out about the undergraduate and Masters courses you can study at [courses.leeds.ac.uk](https://courses.leeds.ac.uk)

#### Computing

We're ranked 6th for computer science in the Complete University Guide 2020. Our active research environment allows us to offer a range of exciting courses. Strong links with industry ensure our courses are current and match employers' needs.

Areas include: high performance graphics, artificial intelligence, machine learning and data analytics.

#### Design

Our courses are designed to meet commercial, cultural and technological needs, now and in the future. Combining theory, practice and research, we aim to develop our students as 'added value' innovators who can use aesthetics and technology to generate creative concepts and products.

Areas include: fashion and textiles

#### Education

We're ranked top 15 in the UK for education (QS World University Rankings 2019). Our courses are taught by an international team of leading academics, who are experts in their fields. Our teaching is enhanced by our research, 90% of which was judged 'very considerable' or 'outstanding' for impact (REF 2014).

Areas include: international education, leadership and policy and TESOL.

## UNDERGRADUATE AND MASTERS DEGREES (CONTINUED)

### Engineering

We're one of the largest engineering groupings in the UK, delivering teaching and research through four schools, and ranked in the top ten in the Guardian University Guide 2020.

Areas in engineering include: chemical, civil, energy, environmental, electronic and electrical, materials, mechanical, medical, project management and robotics.

### English

The School of English is a large, diverse and dynamic learning community with a wide range of research and subject areas. We're ranked 34th in the world for English language and literature in the QS World University Rankings 2019.

### Fine Art, History of Art and Cultural Studies

The School of Fine Art, History of Art and Cultural Studies was 3rd in the UK for fine art in REF 2014. It offers a unique combination of courses centred on the encounter between historical, cultural and theoretical analysis, museum and heritage studies and fine art practice.

### Food Science and Nutrition

We're ranked 1st in both the Guardian University Guide 2020 and the Complete University Guide 2020. We are globally renowned for our teaching and research across the whole spectrum of food, from the molecular level to how food affects our body and how our diet is influencing our health. You'll be taught by active researchers and visiting industry experts, helping prepare you for a career in one of the world's biggest industries.

### Geography, Environment and Earth Sciences

We're ranked top 10 in the UK for geography, geology and environmental sciences by The Times and Sunday Times Good University Guide 2019. Our reputation for world-class research and innovative teaching shapes your studies and offers the opportunity to work alongside academics at the forefront of research on major global issues.

Areas include: climate change, geographical information science (GIS), water, cities and sustainability.

### History and Medieval Studies

Ranked 10th in the UK for History (Guardian University Guide 2020), we have an international reputation for innovative research and teaching in medieval studies, the histories of South and East Asia, Africa and the Americas, as well as European, British and international history.

### Languages, Cultures and Societies

The School is one of the UK's leading centres for research and teaching in languages, cultures and societies, both ancient and modern, as well as linguistics, translation and film studies. We're ranked top 20 in the UK for modern languages and linguistics (Guardian University Guide 2019).

Areas include: translation, interpretation, East Asian culture, linguistics and Arabic, Islamic and Middle Eastern Studies.

### Law and Criminology

We're ranked in the UK top 10 for law (The Times and Sunday Times Good University Guide 2019) and 4th for criminology (Guardian University Guide 2020). You'll deepen and broaden your knowledge of important aspects of law and criminal justice and develop the analytical and critical reasoning skills so vital in modern employment.

Areas of law include: banking, intellectual property, business and corporate.

### Mathematics

As one of the UK's largest mathematics departments, our expertise ranges from data science to fluid dynamics and financial statistics. This gives you the opportunity to specialise and focus on your future career. We're ranked in the UK top 10 for research quality, impact and power (REF 2014).

Areas include: statistics and data science.

### Media and Communication

From political campaigns to popular culture and social networking, media and communication are at the centre of everyday life. We're ranked 2nd in the UK for communication and media studies (Complete University Guide 2020), offering degrees which emphasise choice and skill development.

Areas include: journalism.

### Medicine, Dentistry, Healthcare and Psychology

We have an internationally excellent reputation for the outstanding quality of teaching and research. We continue to be innovators in medical science. Over 80% of our research activity is rated either 'world-leading' or 'internationally excellent' (REF 2014). Our goal through research and education is to improve the quality of life, not only for individuals but also for society.

Areas include: cardiovascular medicine, cancer, public health, health data science, health psychology, dental surgery, musculoskeletal disease, and imaging techniques.

### Music, Theatre and Performance

Music and performance provides the creative means to express emotions and engage the intellect – on stage and in daily life. Our courses offer a multidisciplinary approach and excellent facilities, allowing you to develop the critical, creative and entrepreneurial skills needed in the cultural industries.

 Find out about the undergraduate and Masters courses you can study at [courses.leeds.ac.uk](https://courses.leeds.ac.uk)

### Nursing, Midwifery and Social Work

The School of Healthcare's mission is to provide outstanding education for our students and to deliver impact through our research, improving the health and wellbeing of society. Our graduates drive excellence in their fields, making a difference in communities both in the UK and worldwide.

### Philosophy, Religion, Liberal Arts and Applied Ethics

We provide inspirational, innovative teaching and learning in philosophy, religion and the history of science. We're also home to the Inter-Disciplinary Ethics Applied Centre – a specialist centre leading in the teaching, consultation and research of applied ethics.

### Sociology, Social Policy, Politics and International Studies

The School of Politics and International Studies is ranked top 50 for development studies (QS World University Rankings 2019), bringing together an international staff and student community. The School of Sociology and Social Policy is in the top 15 in the UK for social policy (Guardian University Guide 2020), with research that informs and enriches your learning.

Areas include: global development, international relations, public administration, conflict, security, and society, culture and media.



## UNDERGRADUATE AND MASTERS DEGREES (CONTINUED)

### Sport and Exercise Sciences

We are 1st in the UK for world-leading research in the area of sport and exercise sciences (REF 2014), meaning you will benefit from research-based specialist knowledge. At postgraduate level we offer experienced professionals a unique blended learning opportunity with practitioner-led training.

Areas include: biomechanics, motor control, exercise physiology and sport psychology (undergraduate); and sport and exercise medicine (postgraduate).

### Transport

We're 12th in the world for transportation science and technology in Shanghai Ranking's Global Ranking of Academic Subjects 2019.

Our courses have been developed in partnership with industry, are guided by current research, and provide excellent teaching. You'll develop specialist knowledge which will set you apart from your peers and help you on your career path.

 Find out about the undergraduate and Masters courses you can study at [courses.leeds.ac.uk](https://courses.leeds.ac.uk)

## RESEARCH DEGREES

Studying for a research degree will challenge you intellectually and push you to new levels. It's hard work but the rewards can be huge. In the end, you'll be an expert in your field.

The scale and quality of our research gives you the opportunity to be part of internationally important work. Over half our submissions to REF 2014 included contributions from PhD researchers. You can work on existing projects, such as sustainable food sources and climate change, or conduct your own independent research project. And you'll find all the facilities and support you need to excel during your time here.

The University of Leeds is home to several interdisciplinary centres, like the Priestley International Centre for Climate and the Astbury Centre for Structural Molecular Biology, which pool expertise from different disciplines to extend the limits of knowledge.

Whatever your specialism, there will be opportunities for you to work with others in your discipline and across disciplines through research groups, conferences and informal networks and socials, both within the University and in other institutions.

Our Doctoral College will support you throughout your time as a postgraduate researcher. It brings together all the support services and opportunities you'll need to enhance your research, your development and your overall experience.

Explore the latest PhD opportunities across our schools and institutes at

[www.leeds.ac.uk/researchopportunities](https://www.leeds.ac.uk/researchopportunities)

# NEXT STEPS

Choosing the right university  
is an important decision and  
an investment in your future.



## COSTS TO CONSIDER

There are two main costs to consider at university: tuition fees and living costs.

### TUITION FEES

The tuition fees for 2020 should be confirmed by autumn 2019 and will be available on our website.

For undergraduate and Masters students read more at [courses.leeds.ac.uk](https://www.leeds.ac.uk/courses)

For postgraduate researchers read more at [www.leeds.ac.uk/pgrfees](https://www.leeds.ac.uk/pgrfees)

The UK government confirmed that non-UK EU students starting in the 2019/20 academic year will have home fee status and be eligible for UK government student loans. The UK government has not confirmed the situation for future years, so keep checking our website for updates.

If you will be studying a Masters and you need a Tier 4 student visa to study in the UK, you must pay a tuition fee deposit, unless you are fully funded by a University-recognised sponsor. Find out more at [www.leeds.ac.uk/tuitionfeedevelopments](https://www.leeds.ac.uk/tuitionfeedevelopments)

### LIVING COSTS

Living costs include things like the cost of your accommodation, food, transport and social activities. Leeds is a relatively low-cost city compared to many areas of the UK, but you still need to budget carefully. Get advice on money, budgeting and the cost of living in Leeds on our For Students website at [students.leeds.ac.uk/budgetandcosts](https://students.leeds.ac.uk/budgetandcosts)

When you apply for your visa, you'll have to prove that you can support yourself financially while in the UK. Contact our immigration advisers if you have any questions. [www.leeds.ac.uk/immigration](https://www.leeds.ac.uk/immigration)



## FUNDING

Studying abroad is a big investment. Being able to finance your studies is an important factor in your decision to study in the UK. You might be able to get funding from government, independent sponsors, the University or other funding bodies.

### FUNDING FROM YOUR GOVERNMENT

Check if any funding is available from your country to study in the UK. This could be from your home government, or from companies or organisations based in your home country. Visit their websites or contact your local government office.

### FUNDING FROM THE UK GOVERNMENT

Non-UK students from the EU may be able to apply for a Tuition Fee Loan (for undergraduate study), or for a Postgraduate Masters Loan or Postgraduate Doctoral Loan. (These loans are not available to international students from non-EU countries.) Funding arrangements for students starting university in 2020 were under review by the government at the time of printing. Read more at [www.gov.uk/student-finance/eu-students](https://www.gov.uk/student-finance/eu-students) [www.gov.uk/funding-for-postgraduate-study](https://www.gov.uk/funding-for-postgraduate-study)

The UK government offers postgraduate scholarships to international students, such as the Chevening Awards and the Commonwealth Scholarships. Read more at [www.gov.uk/postgraduate-scholarships-international-students](https://www.gov.uk/postgraduate-scholarships-international-students)

There is also funding for students in specific countries. Find out what's available from the British Council website. <https://study-uk.britishcouncil.org/options/scholarships-financial-support>

### FUNDING FROM THE UNIVERSITY

We offer a wide range of scholarships for EU and international students to help towards paying tuition fees or living costs. Check the relevant website below and your academic school's webpages. Scholarships can be very competitive, so it's important you make enquiries and apply to all possible sources of funding at an early stage. Keep checking for updates, as new scholarships are added throughout the year.

Undergraduate students  
[www.leeds.ac.uk/scholarships](https://www.leeds.ac.uk/scholarships)

Masters students  
[www.leeds.ac.uk/mastersfunding](https://www.leeds.ac.uk/mastersfunding)

Postgraduate researchers  
[www.leeds.ac.uk/researchdegreesfunding](https://www.leeds.ac.uk/researchdegreesfunding)





## APPLYING TO STUDY HERE

Understand the qualifications and English language level you will need, and the visa and immigration requirements.

### ENTRY REQUIREMENTS

All our taught degree courses (undergraduate and Masters) have different entry requirements. Check the entry requirements for the course you're interested in at [courses.leeds.ac.uk](https://www.leeds.ac.uk/courses)

For postgraduate research degrees, check entry requirements on the academic school's webpages or contact the faculty graduate school.  
[www.leeds.ac.uk/graduateschoolcontacts](https://www.leeds.ac.uk/graduateschoolcontacts)

We accept a range of international qualifications. Check the accepted qualifications and equivalent requirements from your country at [www.leeds.ac.uk/internationalqualifications](https://www.leeds.ac.uk/internationalqualifications)

If you want to study an undergraduate degree but are not able to gain the equivalent of A-level qualifications in your country, you should consider applying for an international foundation year, which prepares you for undergraduate study. Read about the different foundation year options on page 39 and at [internationalfoundation.leeds.ac.uk](https://internationalfoundation.leeds.ac.uk)

### English language requirements

If English is not your first language, you will need a recognised English language qualification to study at the University. We accept a range of qualifications, including IELTS. Read more about the qualifications we accept at [www.leeds.ac.uk/internationalentry](https://www.leeds.ac.uk/internationalentry)

English language requirements vary between courses. Check the requirement for your course at [courses.leeds.ac.uk](https://courses.leeds.ac.uk)

For postgraduate research degrees, check the academic school's webpages or contact the faculty graduate school.  
[www.leeds.ac.uk/graduateschoolcontacts](https://www.leeds.ac.uk/graduateschoolcontacts)

### English language courses

Improve your English before you start your studies with a course at the University Language Centre. Our pre-sessional English courses can help you meet the English language requirements of your academic course and prepare you for life and study in the UK. You'll benefit from:

- start dates throughout the year
- study for up to 40 weeks
- courses for your study level:
  - › our undergraduate pre-sessional English course will help you transition from high school to university
  - › for Masters students, teaching in the summer is tailored to your subject area
  - › postgraduate researchers will have the opportunity to study with other researchers
- teaching on our University campus
- access to University facilities, including our Language Zone, a language resource centre
- course content informed by research into language learning.

You can apply to stay in University accommodation while studying your pre-sessional English course. Find out more about our pre-sessional courses and apply at [www.leeds.ac.uk/languagecentre](https://www.leeds.ac.uk/languagecentre)



### Visas and immigration requirements

If you're an international (non-EEA/Swiss) student, you will need to hold an appropriate visa to study in the UK.

[www.gov.uk/tier-4-general-visa](https://www.gov.uk/tier-4-general-visa)

Read about how to apply for your visa at [www.leeds.ac.uk/tier4visa](https://www.leeds.ac.uk/tier4visa)

If you're an EEA/Swiss student, keep checking our website for updates. At the time of printing, the situation for EEA/Swiss students beyond March 2020 was not known.

[www.leeds.ac.uk/brexit](https://www.leeds.ac.uk/brexit)

Our team of immigration experts provides free advice on immigration law and requirements for current and prospective students, and their families. They can give you advice to help you prepare your visa application correctly.

[www.leeds.ac.uk/immigration](https://www.leeds.ac.uk/immigration)



## HOW TO APPLY

There are different ways to apply, depending on the course or research area you want to study. Read about what you need to do.

We have offices in China, India, Japan, Malaysia and Nigeria, as well as a global network of international representatives who can advise you about studying at the University and help with your application.

[www.leeds.ac.uk/meetus](http://www.leeds.ac.uk/meetus)

You can get independent advice about studying in the UK from UCAS and the Office for Students.

[www.ucas.com](http://www.ucas.com)

[www.officeforstudents.org.uk/studychoices](http://www.officeforstudents.org.uk/studychoices)

## APPLYING FOR THE INTERNATIONAL FOUNDATION YEAR

Here's how you apply for the University of Leeds International Foundation Year. Other foundation routes are also available – see page 39.

### 1 BEFORE YOU APPLY

Explore the courses we offer and check application deadlines, academic and English language requirements.

[internationalfoundationyear.leeds.ac.uk](http://internationalfoundationyear.leeds.ac.uk)

### 2 APPLY

Apply online using our applicant portal. Make sure you have all your supporting documents scanned and ready to upload (high school transcripts, IELTS (UKVI) certificate, passport and supporting statement). If one of these is not ready at the time of your application, we may need you to send it before we can make a decision.

[applyonline.leeds.ac.uk](http://applyonline.leeds.ac.uk)

### 3 GET A DECISION

We will tell you our decision by email. If your application is successful, we will email you your offer letter.

### 4 ACCEPT YOUR OFFER

If you want to accept your offer, you can tell us through the applicant portal.

[acceptonline.leeds.ac.uk](http://acceptonline.leeds.ac.uk)



## APPLYING FOR AN UNDERGRADUATE DEGREE

Here's how you apply for undergraduate study with us. Read more about applying to Leeds, including our admissions policy, at [www.leeds.ac.uk/howtoapply](http://www.leeds.ac.uk/howtoapply)

### 1 BEFORE YOU APPLY

Explore the courses we offer. Check application deadlines, academic and English language requirements, and all fees and costs at [courses.leeds.ac.uk](http://courses.leeds.ac.uk)

Check visa entry requirements for studying in the UK at [www.gov.uk/browse/visas-immigration/student-visas](http://www.gov.uk/browse/visas-immigration/student-visas)

Check scholarship deadlines.  
Read more on page 47.

### 2 APPLY

Apply online through UCAS at [www.ucas.com/students](http://www.ucas.com/students)

The UCAS website gives information and tips about completing your application and writing your personal statement.

[www.ucas.com/undergraduate/applying-to-university](http://www.ucas.com/undergraduate/applying-to-university)

Remember to check your emails.  
We will email you if we need more information to decide about your application.

### 3 GET A DECISION

UCAS alerts you through UCAS Track when there is an update on your application. If you receive an offer, you can accept it in UCAS Track too.

[www.ucas.com/track](http://www.ucas.com/track)

## APPLYING FOR A MASTERS DEGREE

Here's how you apply for Masters study with us. Read more about applying to Leeds, including our admissions policy, at [www.leeds.ac.uk/mastersapply](http://www.leeds.ac.uk/mastersapply)

### 1 BEFORE YOU APPLY

Explore the courses we offer. Check application deadlines, academic and English language requirements, and all fees and costs at [courses.leeds.ac.uk](http://courses.leeds.ac.uk)

Check visa entry requirements for studying in the UK at [www.gov.uk/browse/visas-immigration/student-visas](http://www.gov.uk/browse/visas-immigration/student-visas)

Check scholarship deadlines.  
Read more on page 47.

### 2 APPLY

Apply online using our applicant portal. Make sure you have all your supporting documents scanned and ready to upload, including your university's grading system. Apply as early as possible, so you have time to apply for funding, accommodation and visas, if applicable.

<https://application.leeds.ac.uk>

### 3 APPLICATION PROCESSING

Your academic school will contact you if they need more information or want to invite you for interview.

Track the progress of your application in the applicant portal. You can do this whether you applied independently or through one of our representatives.

<https://application.leeds.ac.uk>

### 4 GET A DECISION

We will tell you our decision by email. If your application is successful, you can view your offer letter and accept your offer in the applicant portal.

<https://application.leeds.ac.uk>

## APPLYING FOR A POSTGRADUATE RESEARCH DEGREE

Here's how you apply for postgraduate research study with us.

### 1 EXPLORE RESEARCH INTERESTS AT LEEDS

Choose an existing research project or propose your own. Find out about research areas and potential supervisors at [www.leeds.ac.uk/pgr](http://www.leeds.ac.uk/pgr)

### 2 CHECK ADMISSIONS PROCESS AND REQUIREMENTS FOR YOUR RESEARCH AREA

Check the faculty's webpages and contact the faculty graduate school. Find out about any deadlines and if you need to submit a research proposal with your application. [www.leeds.ac.uk/graduateschoolcontacts](http://www.leeds.ac.uk/graduateschoolcontacts)

### 3 FIND SCHOLARSHIPS AND SOURCES OF FUNDING

Research your funding options at [www.leeds.ac.uk/researchdegreesfunding](http://www.leeds.ac.uk/researchdegreesfunding)

### 4 APPLY

Make sure you have all your supporting documents scanned and ready to upload. Check what documents you need and apply online at [www.leeds.ac.uk/pgr/apply](http://www.leeds.ac.uk/pgr/apply)

### 5 GET A DECISION

We will email you to acknowledge your application. After that, you can track the progress online. We will tell you our decision by email.

## NOTES

---



---



---



---



---



---



---



---



---



---



---



---



---



---



---



---



---



---



---



---



---



---



## MAP AND HOW TO FIND US

Read how to get here by air, train or bus.  
[www.leeds.ac.uk/howtofindus](http://www.leeds.ac.uk/howtofindus)



CITY	DISTANCE	MINIMUM TRAVEL TIME
London	195 miles	1 hour 59 minutes (by train)
Manchester	42 miles	54 minutes (by train)
Edinburgh	206 miles	3 hours (by train)
Dubai	4,600 miles	8 hours 30 minutes (by air)
Amsterdam	523 miles	1 hour 15 minutes (by air)
Paris	477 miles	1 hour 30 minutes (by air)



This prospectus was printed in July 2019 and some of the information it contains may have changed.

Read more about our undergraduate and Masters courses at [courses.leeds.ac.uk](http://courses.leeds.ac.uk)

Read more about our postgraduate research degrees at [www.leeds.ac.uk/pg](http://www.leeds.ac.uk/pg)

Produced by Communications, University of Leeds.

Printed by Resource.

### STUDENT CASE STUDIES

Photography by Andy Lord Photography and Susannah Ireland Photography Ltd.

Filming by Motus TV.

### ALTERNATIVE FORMATS

If you require any of the information in this prospectus in an alternative format, eg Braille, large print or audio, email [disability@leeds.ac.uk](mailto:disability@leeds.ac.uk)



/universityofleeds



@UniversityLeeds



**UNIVERSITY OF LEEDS**

Admissions Enquiries  
+44 (0)113 343 2336  
study@leeds.ac.uk

[www.leeds.ac.uk/international](http://www.leeds.ac.uk/international)