



UNIVERSITY OF
BIRMINGHAM

INTERNATIONAL GUIDE

2022 ADMISSIONS



WHY BIRMINGHAM?

When you choose Birmingham, you are choosing to study at an outstanding university, renowned for changing lives and transforming society.

By studying at Birmingham, you will be taught by our outstanding academics, whose research shapes and informs your learning. Here, you benefit from the best of both worlds, a stunning, safe green campus just a few minutes from the

exciting, vibrant city centre. When you choose Birmingham, you will receive high-quality teaching in a world-class research institution that nurtures talent and will support you throughout your life and career.

19TH IN THE *TIMES* AND THE *SUNDAY TIMES* GOOD UNIVERSITY GUIDE 2021 RANKINGS

19TH IN THE *COMPLETE UNIVERSITY GUIDE* 2022 RANKINGS

87TH IN THE 2021 *QS* WORLD UNIVERSITY RANKINGS

21ST IN THE *GUARDIAN UNIVERSITY GUIDE* 2021 RANKINGS

WE HAVE AN INTERNATIONAL COMMUNITY OF MORE THAN **10,000 STUDENTS**

1ST MOST TARGETED UNIVERSITY BY LEADING EMPLOYERS
HIGH FLYERS GRADUATE MARKET IN 2021

WELCOME

We are proud to have been welcoming international students to our beautiful Edgbaston campus for over 100 years. You are a central part of our community, bringing global experience, new ideas and an international outlook, which contribute to the academic and social richness of our university.

At Birmingham, we encourage bold, independent thinking, and provide exceptional academic programmes that will stretch and challenge you.

The best universities depend on two great pillars: the quality of their education and the quality of their research. At the University of Birmingham, our emphasis on the importance of both of these pillars is demonstrated by our strong placement in global rankings, based on indicators such as graduate prospects, publications and student experience.

We are ambitious and committed to investing in our success, appointing and developing outstanding academic colleagues across the breadth of our disciplines, investing in substantial new research programmes and scholarships, and building major international research collaborations. Our historic Edgbaston campus is undergoing one of the most exciting and transformational

redevelopments since the original buildings were completed in 1900, providing you with exceptional new facilities and accommodation.

Birmingham has a history of firsts and we are now the first global top 100 and Russell Group university to establish a campus in Dubai, building on our extensive international research and teaching collaborations and demonstrating our ambition as an outward-looking, world-class institution. The University of Birmingham Dubai will encompass our heritage, prestige and global renown, giving its pioneering students the opportunity to benefit from a British education that is recognised and valued by employees and institutions around the world.

Birmingham is a place for leading scientists, professionals, and students who want to be involved in world-class research and achieve a degree that will enhance professional opportunities around the world. We look forward to welcoming you to campus, and to playing our part in your future success.

Professor Robin Mason
Pro-Vice-Chancellor (International)
University of Birmingham

Before you apply, please visit our website to view essential information for all applicants: www.birmingham.ac.uk/applicantinformation. If the University makes you an offer, and you decide to accept it, a contract will be formed between you and the University. The website includes important terms, conditions and requirements that will apply to that contract, and on which the University will rely in its future relationship with you. It is essential that you read them carefully.

Information set out in the prospectus and on the University website is accurate at the date of publication (October 2021).


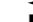

CONTENTS

Welcome	3
Key information	4
Your future starts here	5
Careers	6
Living in Birmingham	8
Our Edgbaston campus	10
Your facilities on campus	12
A place to call home	14
Living costs	16
Teaching quality and support	18
Supporting you during your studies	20
Funding your studies	22
University of Birmingham Dubai	24
Which level should you choose?	26
How to apply	28
Applying for an undergraduate programme	29
Applying for a taught postgraduate programme	30
Applying for a research programme	31



PROFESSOR ROBIN MASON
PRO-VICE-CHANCELLOR
(INTERNATIONAL)
UNIVERSITY OF BIRMINGHAM

FIND OUT MORE

 @unibirmingham
 /unibirmingham
 @unibirmingham

www.birmingham.ac.uk

KEY INFORMATION

MEET US IN YOUR COUNTRY

Our officers regularly travel overseas to meet you. To find out when we are in your country, visit www.birmingham.ac.uk/meetoverseas



KEY DATES FOR INTERNATIONAL STUDENTS

Undergraduate

7 September 2021	UCAS applications open
15 October 2021	Medicine and Dentistry deadline for 2022 entry
30 June 2022	UCAS applications close
5 July 2022	UCAS Clearing opens for international students
31 July 2022	Accommodation application deadline
20 September 2022	Semester One begins

Postgraduate

If you require a visa to study in the United Kingdom, you will need to apply by 1 July 2022. We are not able to consider applications for 2022 made after this date.

If you do not require a visa, there are no official opening and closing dates for submitting your application, but we would advise if you intend to start your studies in September 2022, you apply by 1 July 2022 to allow time to submit your documents and prepare for the term.

MEET US ON CAMPUS

We understand that as an international student, it can be difficult to attend open days or visit our campus. If, however, you are in the UK, you are welcome to join one of our weekly campus tours. To book a campus tour, please visit www.birmingham.ac.uk/visit

CHAT TO US ONLINE

We run online chats so that you can get answers to your questions from the comfort of your home. You can ask current students and staff about Birmingham, our stunning campus and the course you are interested in. To book an online chat session, please visit www.birmingham.ac.uk/livechats

YOUR FUTURE STARTS HERE

We will work with you to ensure you are ready to take the next step in your career, and equipped to demonstrate your achievements. Join us and you will benefit from a range of opportunities to enrich your personal and professional development.

Our dedicated Careers Network offers expert support for international students, including an international careers consultant and a team of international student ambassadors. We will support you in developing the skills you will need to fully prepare for the working world or further academic study, whether this is in your home country or elsewhere.



www.birmingham.ac.uk/ugcareers

www.birmingham.ac.uk/pgcareers

FINDING JOBS IN YOUR HOME COUNTRY

Our Careers Network researches jobs all over the world. We host fairs, workshops and presentations, which are attended by many large, global companies that offer opportunities worldwide. We offer a huge database of information on employers, vacancies and industry trends in a range of countries.

ALUMNI INTERNATIONAL GUIDES

Our alumni guides provide you with country-specific tips on the current labour market, finding and applying for jobs and advice from our alumni, all in one place.

www.birmingham.ac.uk/internationalguides

A GLOBAL NETWORK

Our alumni are an important part of our community. Alumni groups have been set up across the globe and our students benefit from mentoring and advice from our alumni.

Our alumni volunteer with us to share their career experiences with current students, giving you an exclusive insight into their journeys while receiving professional support and advice. From guest lectures and mentoring, to work experience and placements, our graduates are actively encouraged to share their knowledge and skills with the next generation of students.

WHAT SUPPORT IS AVAILABLE TO YOU?

We offer many opportunities for you to make the most of your student experience, on and off campus. We can help you to gain experience, develop a broad range of skills and make useful contacts for your future career:

- One-to-one career guidance from college-specific advisors
- CV and job application advice

- An annual programme of careers fairs on campus
- Employer presentations – make contacts and find out more about what companies and organisations have to offer
- Careers workshops to help you with areas such as interview skills and finding work experience
- Graduate mentoring
- Skills training for postgraduates, including real-world business challenges
- Bespoke careers support, events, skills training and careers conferences specifically for postgraduate researchers

- Entrepreneurial skills training – support and advice on setting up your own business
- Online career action planning tools and self-enrolment career development courses – use in your own time to support your career planning
- International Careers Consultant and International Employer Liaison Officer

Each of our colleges also has its own careers and employability team. These teams deliver tailored programmes of careers events for you, and can provide you with advice and guidance services at locations within the colleges.

CAREERS

Choosing to study a degree is all about setting yourself up for a bright future. Our Careers Network is here to support you and will help you to develop the skills, confidence and experiences you need to stand out from the crowd. Our students were the most targeted in the country by top employers in 2021/22 (*Graduate Market 2021 High Fliers Report*).

EXCLUSIVE OPPORTUNITIES

While you complete your studies, our Careers Network offers many opportunities to gain experience in the workplace. These include funded work experience placements across a range of sectors, exclusive internship opportunities for our students and direct access to hundreds of employers through our careers fairs, workshops and presentations.

Our award-winning Personal Skills Award helps undergraduate students develop, recognise and articulate their skills in preparation for real-world recruitment processes. There is also our Global Challenge programme, which offers the opportunity to spend a summer as an intern in a global company.

A COMPREHENSIVE CAREERS SERVICE

Explore

Learn about your options during and after your degree, such as different career sectors, further study and working abroad.

- Career planning tools
- Personality questionnaires
- Careers events
- Graduate destination data from your course

Plan

Inform your next steps with a range of support, such as work experience, mentoring and starting a business.

- Work experience and internships
- Careers mentoring schemes
- Practical skills training
- Supplementary online development

Apply

Get support with the application process, including CVs, LinkedIn, application forms, interviews and assessment centres.

- CV and cover letter support
- Support with completing applications
- Prepare for application testing and quizzes
- Interview and assessment centre workshops



A PERSONAL APPROACH

The Careers Network is designed to provide you with the support you need to realise your ambitions. We operate mentoring schemes that match you with the most suitable expert in your sector of interest, and we encourage all students to take advantage of our careers planning and application workshops, drop-ins and one-to-one appointments. We also offer dedicated entrepreneurial and freelance support if you're interested in setting up your own company after university.



SPECIALIST CAREERS SUPPORT

We recognise that you may need additional, specialist support, including advice about your options to work in the UK once you complete your studies and dedicated events featuring top employers, Birmingham alumni and personalised one-to-one appointments.

Our international and postgraduate teams are here to support you, whichever route you choose. If you are considering further study in academic research as a career path, but are not sure of what the next steps involve, the Careers Network offers a range of support and advice to help you – from sourcing funding to finding research opportunities and more. And best of all, all students have access to the University's careers services even after they graduate, meaning that you will have support, advice and guidance for years to come.

LIVING IN BIRMINGHAM

Birmingham is a global and modern city with a diverse and friendly community. We are Europe's youngest city, meaning you'll be surrounded by like-minded people. We are a centre for arts and culture, shopping and entertainment and we are also home to the largest financial services and creative sectors outside London. Birmingham offers everything you could want from a city, within easy reach of the beautiful English countryside.

FOOD

WE HAVE MORE THAN
200
RESTAURANTS

SERVING
FOOD
FROM
27
DIFFERENT COUNTRIES

WITH
6 MICHELIN
STARS

CULTURE

600
PARKS AND
OPEN SPACES

OVER
50
FESTIVALS
EACH YEAR

1.1 MILLION
INTERNATIONAL
VISITORS IN 2018

SPORT

WE WILL HOST THE
**COMMONWEALTH
GAMES IN 2022**

WE HOST THE
**ANNUAL AEGON
CLASSIC TENNIS
TOURNAMENT**

WE ARE HOME TO
**EDGBASTON CRICKET
GROUND** HOSTING
INTERNATIONAL CRICKET

EXPLORE

STRATFORD
HOME OF SHAKESPEARE

IRONBRIDGE
A WORLD HERITAGE SITE

HISTORIC CANALS
FROM OUR INDUSTRIAL PAST

Explore our city: www.birmingham.ac.uk/city



QUEEN
ELIZABETH
HOSPITAL

THE
MEDICAL
SCHOOL

UNIVERSITY
STATION

THE
LIBRARY

GREEN HEART
PARKLAND

OUR EDGBASTON CAMPUS

With magnificent architecture and a leafy green estate, our campus provides an inspirational environment for you to live and learn.

Our main campus in Edgbaston is set in 250 acres of parkland with spacious lawns, trees, a lake and significant works of sculpture enhancing its landscape. With its domed red-brick buildings, the campus is rich in heritage and beauty.

We have all the amenities of a small town, including shops, bars, cafés,

banks, medical and dental surgeries, sports facilities, and even our own railway station. We have several other sites, including our satellite campus in the historic town of Stratford-upon-Avon (the Shakespeare Institute).

Discover our campus:
www.birmingham.ac.uk/campus

TO SPORT
& FITNESS



YOUR FACILITIES ON CAMPUS

Our Edgbaston campus is in the middle of one of its most transformational campus redevelopments since the first phase of building in 1909.

Our development projects are creating outstanding new facilities for our students and researchers. These ambitious developments will enhance your teaching and learning, and provide you with an unforgettable University experience.

To date, we have opened our new Library, our Birmingham Sport & Fitness centre, a state-of-the-art School of Engineering building and the Collaborative Teaching Laboratory, which you can find out more about on our website.

TEACHING AND LEARNING SPACES ON CAMPUS

Opened in 2021, the Teaching and Learning Building is a hub for education, providing a state-of-the-art teaching and social study space. The building is IT- and audio-visual-rich and includes:

- Up to 1,000 learning spaces, including individual and collaborative study spaces
- A 250-seater interactive lecture theatre
- Ten seminar rooms for up to 30 students at a time

SPORT & FITNESS



THE HEART OF CAMPUS

The Green Heart is a stunning space for you to work, rest and meet your friends. Measuring over 12 acres, this parkland includes a community garden, a café and bar and space for markets, performances and events, giving you plenty of options for socialising, meeting and studying.

SPORT

The University Sport & Fitness Club has something for everyone, hosting a 50-metre pool, 200-station gym, six glass-backed squash courts, a 10m climbing wall and five activity studios. We also have 55 sports clubs for both beginners and athletes.

The University of Birmingham is an Official Partner of the Birmingham 2022 Commonwealth Games. Our campus will welcome athletes and spectators from around the world. We can't wait for everyone to see our incredible facilities and to host world-class events, putting Birmingham on the map as the place to be for sports.

THE GUILD OF STUDENTS

The Guild is your students' union and offers plenty of opportunities for fun and socialising on campus.

They host fantastic events throughout the year to ensure that you can find the right balance between your studies and social life. We work in partnership to ensure that you have the best possible experience by providing support, advice and entertainment. There are over 350 student groups and clubs for you to join where you can meet new people and have fun www.guildofstudents.com

Find out more about our exciting projects online: www.birmingham.ac.uk/building

LIBRARY

Our University Library incorporates more than 2.7 million printed materials and more than 16,000 electronic resources. In our new main Library, there are more than 1,800 study seats. You can access group study rooms or work in the library café. Make use of FindIt@Bham, our online resource to search for physical or electronic copies of your course materials.

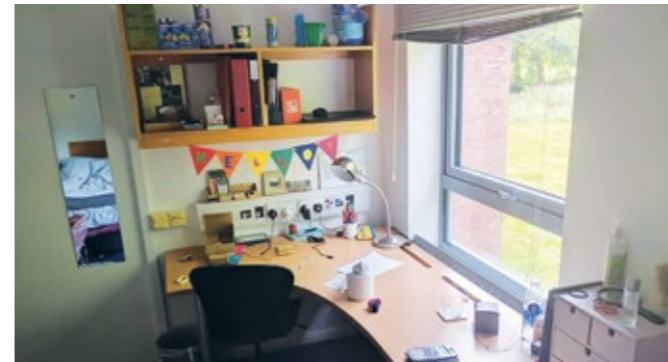


GREEN HEART





LIBRARY

A PLACE TO CALL HOME



Wherever you choose to live during your time with us, our accommodation allows you to enjoy your independence in a safe, welcoming and friendly environment. We have three accommodation villages to choose from, all just a short walk from the main University campus. Each village has its own student community and social hub, meaning you'll feel at home wherever you choose to live.

 Find our accommodation guides, including living costs and accommodation fees online: www.birmingham.ac.uk/living

 Visit our website for more information on the international guarantee: www.birmingham.ac.uk/internationalguarantee

INTERNATIONAL GUARANTEE SCHEME

We guarantee accommodation to international students during your first year of academic study if you meet our eligibility criteria.

To be eligible for accommodation, you must have firmly accepted your offer to study with us and submitted your application online by 31 July 2022 for EU and international students.

THE VALE VILLAGE

Set in beautiful parkland, the Vale Village is just 20 minutes' walk from the main campus and provides a wide range of accommodation to suit all needs and budgets. The Vale is centred on the Hub, offering a restaurant, café, bar and convenience store. The Hub also provides a space for you to socialise and study so that you can get to know your fellow residents.

PRITCHATTS PARK VILLAGE

This Village comprises different accommodation types for postgraduate and undergraduate students within walking distance (ten minutes) of the University, close to local amenities and transport links to the city centre. Pritchatts Park is also home to our Global Community, which offers an exciting multicultural living environment, that allows you to build friendships with students from around the world.

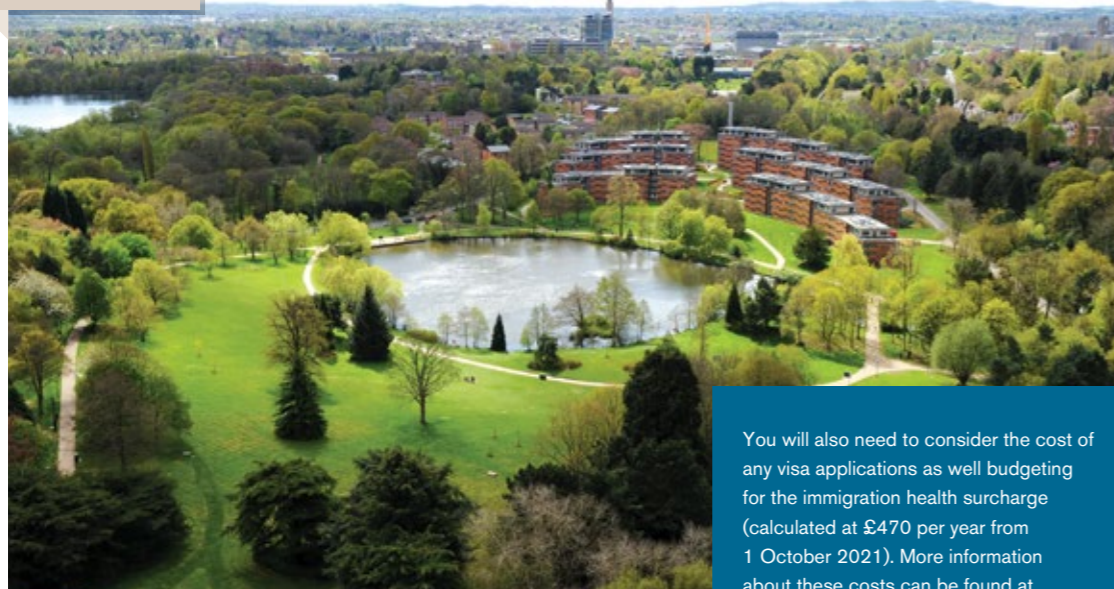
SELLY OAK VILLAGE

Closest to campus and situated in the thriving student area of Selly Oak, the Village provides plenty of choices for bars, cafés, dining and supermarket shopping. Over 900 students live here, and with most of our Partner Accommodation and private student housing also within easy walking distance, it's a really vibrant student area.

LIVING COSTS

EXPENSE	UNIVERSITY ACCOMMODATION	PRIVATELY RENTED SHARED HOUSE
Rent (indicative)	£160 per week	£94 per week (indicative plus a refundable deposit of roughly £300-400 to be paid at the start of the year)
Gas, electricity and water rates	Included in rent	£11 per week
Food/toiletries/laundry	£57 per week	£57 per week
Books, printing, etc	£18 per week	£18 per week
Insurance (indicative)	Included in rent	£2 per week
Clothes and leisure	£40 per week	£40 per week
Local travel	£20 per week	£20 per week
TV licence, phone and internet	£5 per week	£10 per week
Total cost per week	£280	£252
Total for the academic year	£11,760	£10,584

THE VALE VILLAGE



You will also need to consider the cost of any visa applications as well budgeting for the immigration health surcharge (calculated at £470 per year from 1 October 2021). More information about these costs can be found at www.birmingham.ac.uk/studentvisas.

YOUR OFF-CAMPUS OPTIONS

Some of our students choose to find housing in the private sector. A variety of options, including single flats, shared houses and properties for families, can be found in the local area. Popular locations include Selly Oak, Harborne, Moseley and the city centre. The weekly cost of rent in the city centre is from £180, usually excluding utilities.

Find more advice on private accommodation in Birmingham: www.birmingham.ac.uk/rentingprivately

TRAVELLING TO AND FROM CAMPUS

From bike lanes to canal paths, we are well connected to many areas of our city. As we have our own railway station, University station, you can travel from Birmingham New Street to campus in under eight minutes.

There are also bus routes from the city centre, Moseley and Harborne, which drop you close to the University. The new Birmingham Cycle Revolution is a segregated cycleway that links Selly Oak with the city centre and provides a safe, healthy and green way to reach us and travel around the city.

Wherever you choose to live, you can reach the University easily and quickly.

CITY LIVING



TEACHING QUALITY AND SUPPORT

To enable you to grow as a learner, develop your ideas, expand your opinions and achieve your potential, we will be encouraging you to continue your journey to become the most independent and self-motivated learner you can be.

WHAT STUDY SUPPORT WILL YOU RECEIVE?

To help you settle in as quickly as possible, you will have access to a comprehensive support system to assist, encourage and inspire you.

- In addition to your personal tutor, you have welfare tutors or wellbeing officers based in your school and department who can assist with both academic and welfare concerns
- You will receive individual feedback on your assignments, so you can understand how you are doing and what you might need to do to improve further

- The Academic Skills Centre provides help to boost your academic writing, mathematical and general academic skills, including a workshop programme, online self-help tutorials and individual appointments with specialist advisors

Our learning facilities

We offer you an outstanding learning experience, where lectures and seminars provide opportunities for you to develop your ideas through dialogue and debate with fellow students and tutors.

Using our library, collections and archives, you can choose your mode of study; from traditional methods to using e-resources to interact with collections digitally. Among purpose-built, modern surroundings, including labs that support both research and teaching, you will work

alongside an expert team who can help you to exploit our tools and resources.

At Birmingham, we understand that there are many different learning styles and techniques. To help you tailor your learning experience, we offer a wide range of services and facilities to make our support as personalised as possible. Our state-of-the-art library and adjacent Teaching and Learning Building incorporate an array of facilities to suit different working styles, from group study spaces to silent study rooms.

'The pandemic was hard, but the experience I got studying with the University of Birmingham was great, overall. I spent half of my semester studying in my home country India studying on-line, but there were online virtual welcome week programmes to welcome us, and I didn't feel left out at all. When I joined the university in the second semester it was great, there were mentors and teachers there to help me out in every sort of hardship I faced. Despite the pandemic, they managed it well.'

ANSHUL, India - LLM General Pathway

BLENDED LEARNING

At Birmingham we have always prided ourselves on our ability to adapt our provision to suit our students needs.

Throughout 2020 and 2021, in light of the COVID-19 pandemic, we were able to use our academic expertise, and our outstanding digital learning provision to create flexible, blended learning programmes ensuring our students could study whichever way suited them best. This meant students could study part online and on-campus, or entirely online, from wherever they were in the world.

You can be assured that Birmingham will offer the flexibility our students need, and will continue to deliver high-quality teaching.

ASK OUR STUDENTS AND ALUMNI

If you have queries or concerns about any aspects of life as a student at Birmingham, you can get first-hand information and advice from current students and alumni. Our students and alumni will answer your questions based on their own experience of campus life, their University school or department, the city, the transition to university-level study and the support services offered by the University.

Ask a postgraduate student:
www.birmingham.ac.uk/pgask

Chat to undergraduate students:
www.birmingham.ac.uk/chat

CAREERS MENTORING

Mentoring is a unique opportunity that allows students to receive one-to-one advice from a professional working in an area they are interested in. This can be a great way to understand how to succeed in this area, be better prepared for the workplace and receive practical advice on employability.

For more information about the Careers Network Mentoring Scheme, visit:
www.birmingham.ac.uk/careersmentoring



STUDENT MENTORS

The Student Mentor Scheme provides support and advice to students living in University-owned or Partner accommodation. Student Mentors are available during term-time to support you with any financial, academic, shared living or personal challenges you may be facing.

For more information, please visit:
www.guildofstudents.com/studentmentors

RISE ABOVE THE COMPETITION

Global Challenge is a unique scheme to give ambitious students once-in-a-lifetime opportunities, funded as interns in top global companies, whatever your subject or career interest. Previous placements have included internships at the British Consulate in Chicago,

Museum Victoria in Melbourne, Australia and at GlaxoSmithKline in Morocco, Argentina and Singapore.

Learn more:
www.birmingham.ac.uk/globalchallenge

WE ARE HERE TO SUPPORT YOU

We provide a wide range of student services to meet the needs of our diverse international student community. The Aston Webb Student Hub brings together many services in one place in the Aston Webb Building, at the heart of the campus. The Hub is also online, known as Student Help, with a range of advice resources for you to interact with. Whether you are looking for information, guidance, emotional support or a specific specialist student service, it is a great starting point.

SUPPORTING YOU DURING YOUR STUDIES

We place great emphasis on the wellbeing and safety of our students, offering a range of support services to help you during your studies.

A SAFE CAMPUS

Our campus, situated in the leafy suburb of Edgbaston, provides a safe, secure and welcoming atmosphere for our students. We have an on-site security team, covering our campus and accommodation sites, who also work closely with the local police.

University accommodation is equipped with CCTV and we also have our own Community Police Officer based at the centre of campus.

DISABILITY AND WELLBEING SUPPORT

We aim to create an inclusive learning community. If you have a disability (including long-term health conditions, specific learning disabilities such as dyslexia or a mental health difficulty), our Disability Learning Support and Mental Health Service can help you to have the best possible experience at Birmingham. We positively encourage you to tell us if you have a disability so that we can support you. Disclosing a disability will not affect your academic course admission but will ensure that you receive any support or adjustments you require. Our professional team is available to provide you with specialist advice and support to access your academic student life in general, including any disability funding support you are entitled to.

INTERNATIONAL WELCOME WEEK

To welcome you and help you settle into university life at Birmingham, we run a dedicated programme in September called International Welcome Week. This begins with an airport collection service and includes tours of the campus and the city, help with, if necessary, administrative tasks such as registering with a doctor and social events, where you can meet other international students from around the globe.

INTERNATIONAL STUDENT TEAM

Our International Student Team provides you with a network of support, starting before you arrive and continuing throughout your studies. You can access information to guide you through important things to do such as finding and registering with a doctor or opening a bank account.

Advice and guidance is available on a wide range of areas including:

- Applying for your visa/visa support to come to the UK or to continue your studies in the UK
- Bringing your family to the UK
- Living and working in the UK during your studies
- Working after your studies
- Information about social activities
- Information on studying in the UK
- Support in adjusting to life and study in the UK

INTERNATIONAL WELCOME WEEK



STUDENT HUB



SUPPORTING YOUR FAITH

The University's Multi-Faith Chaplaincy is for students of all faiths and none. Meet for worship, relax in the Oasis Lounge or see a chaplain for spiritual or religious advice and pastoral counselling. We have Christian, Jewish, Muslim, Hindu and Buddhist chaplains and there are well-established societies and groups. In addition to the facilities on campus, the city of Birmingham has places of worship and prayer rooms for many faiths and religions.

Learn more:
www.chaplaincy.bham.ac.uk

LOOKING AFTER YOUR CHILDREN

If you choose to bring your family to the UK, the University has two nurseries on campus offering a high standard of care and education. The nurseries are very popular, so we recommend you check that places are available as early as possible.

Find out more about childcare options:
www.birminghamdaynursery.co.uk



SUPPORTING YOUR WELLBEING

The Wellbeing Centre aims to enable students to get the most out of their time at university. Should you ever need it, we have a dedicated team of professional counsellors providing individual, group or online support.

The Guild of Students' Guild Advice service is also a source of free professional independent student advice. It is a service dedicated to helping you in a wide range of areas from money to academic issues, employment, housing and immigration questions.



INTERNATIONAL STUDENT TEAM
t: +44 (0)121 414 8464
Online queries:
www.studenthelp.bham.ac.uk
or visit
www.birmingham.ac.uk/ist

FUNDING YOUR STUDIES

How much does it cost to attend university?
Find out more about international fees and funding.

TUITION FEES

We charge an annual tuition fee which covers the cost of your tuition, examination and graduation, as well as access to IT facilities and the library and membership of the Guild of Students. Fees are paid at the start of your programme.

COST OF TUITION

Tuition costs vary according to your chosen programme and your level of study.

Full details of the fees you will pay will be stated in your offer letter.

You can check the latest international fees information on our website before applying: www.birmingham.ac.uk/internationalfees



ASTON WEBB

FEES AND FUNDING ADVICE

The International Student Team provides support and advice on fees and funding for international students.

They can offer advice about:

- Opening a bank account and typical UK living expenses
- Sources of funding that are available
- Financial difficulties
- Immigration regulations and visa restrictions on working in the UK

www.studenthelp.bham.ac.uk



FUNDING YOUR FUTURE

CHAT TO US ONLINE

You can also book on to one of our online chat events to discuss funding opportunities and any concerns about paying for university.

www.birmingham.ac.uk/internationalchat
www.pg.bham.ac.uk

SCHOLARSHIPS AND FUNDING OPPORTUNITIES

To reward outstanding achievement and to attract ambitious and talented international students to Birmingham, we are pleased to offer a number of prestigious international scholarships.

Chevening-Birmingham Partnership Scholarships

Our flagship international scholarship is the Birmingham-Chevening Partnership Scholarship, which comprises ten joint-funded awards covering tuition, stipend and allowances in partnership with Chevening (a UK government scholarship organisation).

Undergraduate Outstanding Achievement Scholarship

We launched this scholarship in 2015 for incoming international students starting Bachelors degrees at the University. Annually, the University awards £120,000 of funding through 30 to 45 tuition fee discount scholarships ranging from £2,500 to £5,000 for students applying through eligible partner organisations, who can provide evidence of excellence and achievement in their academic or extra-curricular activities.

Country-specific scholarships

We also offer a number of country-specific scholarships for international students seeking to join the University. You will need to be domiciled in an eligible country prior to your studies at Birmingham. Examples of these awards include our USA Bachelors and postgraduate scholarships, Canada undergraduate scholarship and Hong Kong postgraduate scholarship.

Subject-specific scholarships

We also have various subject-based scholarships on offer, funded by our individual schools and departments. Go to: www.birmingham.ac.uk/internationalscholarships

Sponsorship (external scholarship providers), loans and financial aid

The University is an approved institution for hundreds of government ministries and other sponsoring organisations around the world. In 2018/19, we were home to international students with financial sponsorship from over 190 different organisations; from the Bolashak Scholarship in Kazakhstan to CONACYT Mexico and the China Scholarship Council. Information for sponsors can be found here: www.birmingham.ac.uk/sponsors

We are also approved to offer the USA Federal Direct Loan Programme and also certify USA loans via private lenders. Information on USA and Canada loans can be found here: www.birmingham.ac.uk/internationalloans

For further information and to apply for all scholarships, visit: www.birmingham.ac.uk/internationalscholarships

To search for funding opportunities, go to:
www.birmingham.ac.uk/pgfunding
www.birmingham.ac.uk/ugfunding

PART-TIME EMPLOYMENT

The Guild of Students gives you access to hundreds of part-time vacancies should you need to support your living costs. They also provide employment information and advice.

If you want to work while you study, find vacancies and advice from the Guild of Students: www.guildofstudents.com/jsv

For more advice and information, please visit: www.birmingham.ac.uk/internationalfunding

UNIVERSITY OF BIRMINGHAM DUBAI

You can now receive a world-class, University of Birmingham education in the global city of Dubai. We provide opportunities for you to study on a range of foundation, undergraduate and postgraduate programmes at our Dubai campus.

Birmingham is the first global top 100 and Russell Group university to establish a campus in this rapidly developing international education hub. You can be confident of an outstanding learning experience that is taught, examined and accredited to the same high standards as those delivered on our UK campus. You will be taught by academics who are experts in their fields, shaping policy, influencing society and changing lives around the world.



PARKSIDE



A BRAND NEW PURPOSE-BUILT CAMPUS

Opening in 2021, our Dubai campus will add to the progress already made in Dubai International Academic City and provide a permanent academic home for up to 2,900 students, a community for Birmingham alumni in the region and hub for community outreach and engagement activities. Iconic buildings are located opposite a purpose-built student housing community – looking across parkland reflecting the Green Heart of the University's UK campus.

CUTTING-EDGE FACILITIES IN DUBAI

The University of Birmingham Dubai campus is an innovative and iconic facility that allows our students to obtain maximum benefit from our teaching and research expertise.

From world-leading research and facilities to our forward-thinking staff, technological infrastructure and our industry partnerships, we will drive innovation to ensure you are well prepared with the skills, knowledge and expertise required to excel in the job market of tomorrow.

A student 'hub' locates student services in one space. Sheltered courtyards and social spaces provide a relaxing environment in keeping with the local climate that is designed to enhance the campus's sustainability. From large lecture theatres and laboratories through to smaller seminar and tutorial rooms for working with your tutors and fellow students, the University of Birmingham Dubai campus delivers a world-class experience for you as students and for our staff and visitors.

DRY LAB



GROWING YOUR GLOBAL CONNECTIONS

As a University of Birmingham Dubai student, you will become a self-motivated learner, eager to develop your understanding of your chosen subject and keen to make your mark when you graduate. It is this intellectual curiosity, ambition and breadth of experience which makes Birmingham graduates some of the most employable in the world.

We offer our UK students the opportunity to travel to the UAE to study alongside our students in Dubai and (subject to academic performance) you will have the opportunity to travel to the UK for up to a year to study at our Birmingham campus, should you wish.

Our graduates go on to be entrepreneurs, scientists, CEOs, politicians, diplomats, philanthropists and volunteers. We are ranked in the Global Top 100 for graduate employment outcomes (*QS Graduate Employability Rankings 2021*).

WHICH LEVEL SHOULD YOU CHOOSE?

With over 450 undergraduate programmes and 900 postgraduate programmes, we offer a broad range of subjects and specialisms to enable you to pursue and develop your interests. The University is structured into five colleges, each of which is divided into a number of schools and departments offering a diverse range of programmes. Find out more about each of the levels of study below and decide which qualification is right for you.

FOUNDATION

Our Foundation Pathways provide a route into undergraduate study at Birmingham. A Foundation Pathway is for international students who require a further year of study before beginning an undergraduate degree programme. All pathway students are taught by Birmingham academics and have full access to campus facilities, and successful completion of your foundation year means you will progress to a wide range of our undergraduate programmes.

The Birmingham International Academy (BIA) provides our Foundation Pathways, as well as pre-session English programmes for students preparing to study at the University and English support for students who are already at the University. The department is accredited by the British Council for the teaching of English in the UK.

How to apply:

Online application to the University of Birmingham:
www.birmingham.ac.uk/foundation

UNDERGRADUATE

An undergraduate degree is your first degree and you will usually achieve the qualification of a Bachelor of Arts (BA) or Bachelor of Science (BSc). Undergraduate degrees provide knowledge in a subject and typically last for three years. You can then progress to postgraduate study in the UK or internationally.

Applications for undergraduate programmes in the UK are made through an organisation called the Universities and Colleges Admissions Service (UCAS). You make your application online and UCAS forwards the application on to the relevant universities on your behalf. You can apply via UCAS from the September before the year that you want to start your degree.

How to apply:

Online via UCAS: www.ucas.com



ENTRY REQUIREMENTS

Our entry requirements for all of our courses can be found on the relevant course pages.
www.birmingham.ac.uk/foundation
www.birmingham.ac.uk/ugcourses
www.birmingham.ac.uk/pgcourses

POSTGRADUATE

Taught programmes

Postgraduate taught programmes are usually one year in length. They are assessed by a combination of coursework, examination and dissertation and lead to the award of a Masters qualification. If you wish to further your knowledge, prepare for a research degree, gain vocational qualifications or change career, then a taught Masters could be the right programme for you.

We offer a wide range of taught Masters programmes, usually in the form of a Master of Arts (MA) or Master of Science (MSc). However, they can also include programmes such as the Master of Education (MEd), Master of Engineering (MEng) and Master of Business Administration (MBA).

Research programmes

Postgraduate research programmes involve the completion of original academic research. They also include research skills training that will equip you to become an independent researcher, capable of advancing knowledge in your field.

A combined research and taught Masters, such as the MRes, will provide you with both taught modules to increase subject knowledge, and the opportunity to complete a research thesis.

A research Masters, such as the MSc by Research, is a chance to investigate a topic from your undergraduate study in greater depth and is a great way to demonstrate your ability to undertake independent research.

Doctoral degrees, such as the PhD, are the highest level of academic qualification.

How to apply:

Online application to the University of Birmingham:
www.birmingham.ac.uk/pgapply



Build your personalised postgraduate prospectus online:
www.birmingham.ac.uk/pgprospectus

STUDY AT A LEADING UNIVERSITY



HOW TO APPLY

Choosing to study in the UK is an exciting decision. The steps here will guide you through the application process for your chosen course and provide some essential information.

SUPPORTING DOCUMENTS

Whether you are applying for an undergraduate or postgraduate programme, you will need to provide supporting documents with your application. These include:

- Transcript or statement of results of your highest qualification or predicted grades (originals or certified copies are not required at the application stage)
- One or two references
- If English is not your native language, a copy of your IELTS, TOEFL or Pearson Academic English Test certificate
- A copy of your passport personal details page

POSTGRADUATE APPLICANTS

If you require a visa to study in the United Kingdom, you will need to apply by 1 July 2022.

We are not able to consider applications for 2022 made after this date.

BIRMINGHAM INTERNATIONAL SUMMER SCHOOL

To apply to take part in the Birmingham International Summer School programme, visit: www.birmingham.ac.uk/biss

FOUNDATION PATHWAYS

To apply to our September or January pathways, please visit our website: www.birmingham.ac.uk/foundation and follow the instructions.

STUDY ABROAD AND EXCHANGES

For information on how to apply to spend time at the University as part of our Study Abroad programme, visit: www.birmingham.ac.uk/incomingstudy

INTERNATIONAL CLEARING

If you are applying for a place on an undergraduate degree programme after 30 June, you can apply through Clearing.

For more information, see www.ucas.com/clearing

YOUR OFFER

An unconditional offer means that you have already met the University's entrance requirements and there are no conditions attached to your offer of a place. A conditional offer means that you have not yet satisfied the University's entrance requirements. Your offer letter will detail the requirements still to be met before your place will be confirmed.

Offer holders are advised to fulfil their conditions as soon as possible to allow sufficient time to obtain a visa.

International students will need to consider and be aware of certain immigration requirements when accepting their offer and when preparing for their student visa.

Visit: www.birmingham.ac.uk/studentvisas

APPLYING FOR AN UNDERGRADUATE PROGRAMME

Apply through the Universities and Colleges Admissions Services (UCAS) between early September (prior to the year you wish to study) and 30 June (in the year you wish to study).

If you are applying for Medicine or Dentistry, you will need to apply by 15 October.

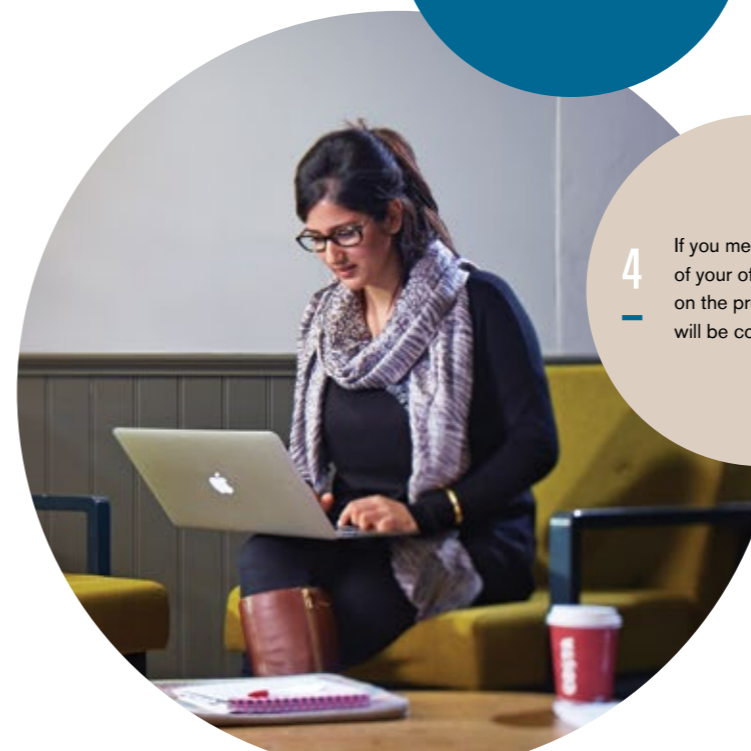
1 Visit www.ucas.com to apply online – you can apply to up to five choices.

2 UCAS will notify you once a decision has been made on your application. If you are successful, you will receive an offer.

3 Once a decision has been made on all your choices, UCAS will ask you to confirm which two offers (if any) you want to hold while you wait for all your results. You will need to choose your firm choice programme and an insurance, which is your back-up place in case you do not get the grades required for your firm choice.

4 If you meet the conditions of your offer, your place on the programme will be confirmed.

5 For international students intending to study on a student visa, a Confirmation of Studies (CAS) will be issued at this stage.



APPLYING FOR A TAUGHT POSTGRADUATE PROGRAMME

Formal applications for taught postgraduate programmes are made directly to us using our course finder: www.birmingham.ac.uk/pgcourses

Applying for a taught postgraduate programme usually involves three easy steps:

1 Find your course online: www.birmingham.ac.uk/pgcourses

2 Consider whether you meet our entry requirements, details of which can be found in the course finder entry.

3* Complete the online application form via the course webpage and upload your supporting documents.

* Some taught courses may charge a £50 application fee. For further information, visit www.birmingham.ac.uk/pgappfee

i You will need to apply to our Social Work and Initial Teacher Training programmes through UCAS. You can register and apply as soon as the UCAS portal opens (usually in September).

i Find out more about applying to postgraduate taught and research courses on our website: www.birmingham.ac.uk/pgapply



APPLYING FOR A RESEARCH PROGRAMME

At Birmingham, there are generally two routes to a research degree. Follow the application steps on this page depending on your preferred route.

APPLYING FOR AN 'ADVERTISED PHD'

You can apply for an 'advertised PhD', which means it is part of an established research project and is usually funded by the University or other funding body. In most cases, the advertised listing will direct you to the correct course page, where you can check requirements.

1 Find and identify your project via our advertised PhDs database: www.birmingham.ac.uk/findaphd

2 Prepare your statement and supporting documents.

3 Submit your application online via course finder and upload your supporting documents. Identify the project title for advertised PhDs, and potential supervisor(s) for proposed research.

4 Once received, we will consider your application, usually taking four to six weeks. Track your progress and receive our communications via the Applicant Portal.

5 If you are made an offer, this will be either unconditional or conditional. If you accept and meet these conditions, we will confirm your place. For international students intending to study on a student visa, a Confirmation of Acceptance for Studies (CAS) will be issued at this stage.

APPLY TO PROPOSE YOUR OWN RESEARCH

You can propose your own research rather than join an existing research project. You will need to submit a research proposal to conduct a unique piece of research and identify your proposed supervisor. Funding can be found from other sources such as scholarships, charities, loans and self-finance.

Consider the research area and themes. Begin your supervisor search: www.birmingham.ac.uk/findasupervisor

Consult with a potential supervisor or department. Write your research proposal* using our online advice.

i Please be aware that an application cannot be considered until all the necessary supporting documents, such as references, transcript and research proposal have been received.

i *A research proposal is a concise and coherent summary of your proposed research. We have provided help and advice for each of the steps of writing your proposal here: www.birmingham.ac.uk/proposalwriting

CONTACT US

Undergraduate study enquiries:

www.birmingham.ac.uk/ug-faqs

Postgraduate study enquiries:

www.birmingham.ac.uk/pg-faqs

Specific information for your country or region:

www.birmingham.ac.uk/country

Study Abroad enquiries:

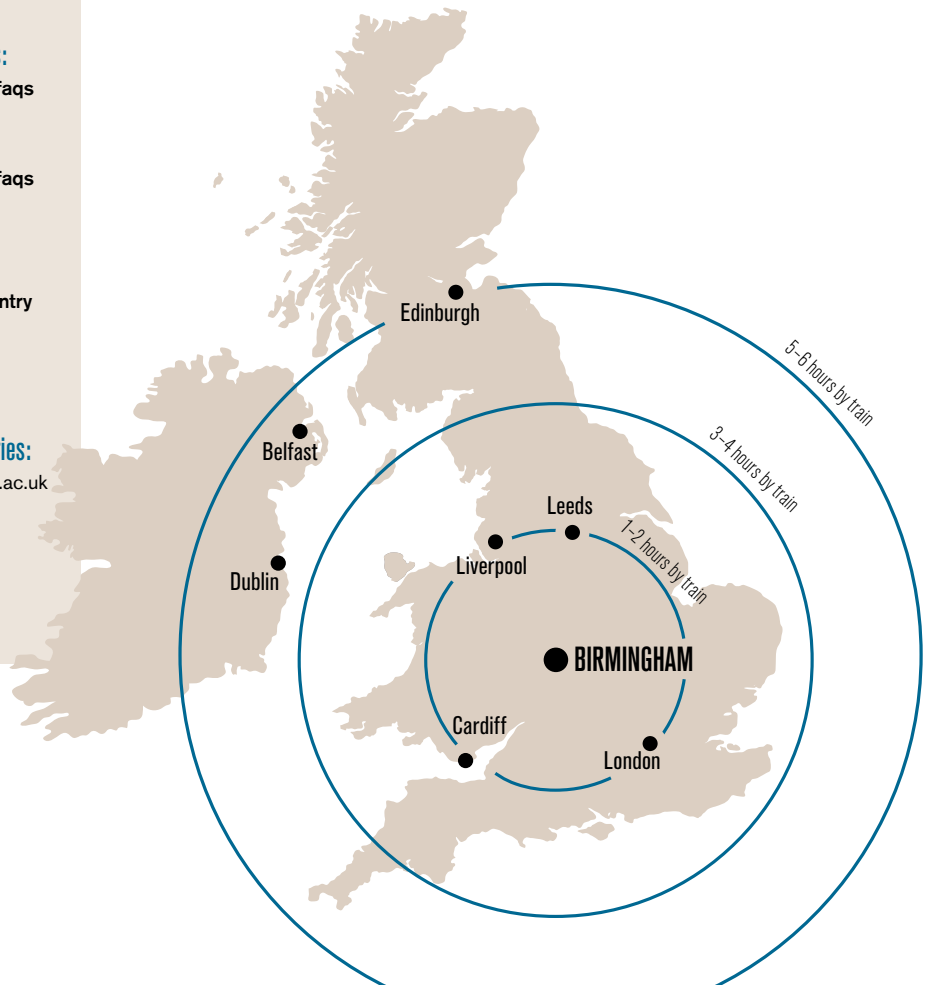
e: studyabroad@bham.ac.uk

Birmingham Foundation enquiries:

e: foundation@contacts.bham.ac.uk

Birmingham International Summer School:

e: biss@contacts.bham.ac.uk



Please note: journey times are for guidance only and are based on the average time taken for off-peak trains travelling between mainland UK city-centre stations.



UNIVERSITY OF
BIRMINGHAM

Edgbaston, Birmingham,
B15 2TT, United Kingdom
www.birmingham.ac.uk



When you have finished with
this prospectus please recycle it

