

**INTO** 

UNIVERSITY OF  
**EXETER**

# UNIVERSITY PATHWAYS

FOR INTERNATIONAL  
STUDENTS

**2021–22**



**TEF** Gold

**RUSSELL  
GROUP**

# MAKING THE EXCEPTIONAL HAPPEN >

Welcome to INTO University of Exeter – your pathway to a degree from the University of Exeter. We give international students like you the chance to study at an institution renowned for its outstanding teaching and graduate employability.

**TOP 150**

In the **Top 150** universities in the world<sup>1</sup>



In the **Top 40 most international universities** worldwide<sup>2</sup>

**1<sup>ST</sup>**

The Business School is **1st in the UK** for graduate outcomes<sup>3</sup>

You will study a specialist programme designed exclusively for international students and tailored to the requirements of the University. You'll complete your course at our modern Study Centre in the heart of the beautiful Streatham Campus, where you will become part of the University community from the day you arrive.

Choosing to study abroad is a big decision, but at INTO University of Exeter, we'll give you everything you need to succeed at university and beyond. Just look at our student success rates in 2018–19!

## CHOOSE #INTOEXETER AND OPEN UP A LIFETIME OF OPPORTUNITIES

**96% PASSED**

**83%** of which were **ELIGIBLE** to progress

Passed: % of those who completed their pathway  
Eligible: % eligible to progress to the University of Exeter of those who passed



The University of Exeter is comprised of three campuses. Streatham Campus is where the INTO Centre is located and where you'll find the majority of our subjects, including Business, Law and Humanities. Nearby St Luke's Campus is where Sport Science and Medicine are taught, and Penryn Campus in Cornwall is home to subjects including Biosciences, Mining and Geology.



At INTO Exeter, I knew I'd be able to gain access to everything the University students had, such as the vast library and facilities, while also getting that one-to-one attention you get at INTO. It was the best way to start my university experience.

Sara, Bahrain  
Completed an International Year One and progressed to BA (Hons) Business Economics at the University of Exeter, taking a Corporate Analyst Development Program Internship at J.P. Morgan

## THE UNIVERSITY OF EXETER'S TOP-RANKED SUBJECT AREAS

<b>2nd</b> in the UK for Sport Science <sup>4</sup>	<b>3rd</b> in the UK for Business and Management Studies <sup>5</sup>	<b>6th</b> in the UK for Computer Science <sup>4</sup>	<b>9th</b> in the UK for Accounting and Finance <sup>5</sup>	<b>12th</b> in the UK for Civil Engineering <sup>4</sup>
<b>14th</b> in the world for Mineral and Mining Engineering <sup>6</sup>	<b>38th</b> in the world for Environmental Sciences <sup>6</sup>	<b>Top 100</b> in the world for Psychology <sup>7</sup>	<b>Top 100</b> in the world for Law <sup>7</sup>	<b>Top 100</b> in the world for Life Sciences <sup>7</sup>

<sup>4</sup> The Times and The Sunday Times Good University Guide 2020  
<sup>5</sup> The Complete University Guide 2020  
<sup>6</sup> QS World University Rankings by Subject 2020  
<sup>7</sup> Times Higher Education World University Rankings by Subject 2020



# WHY CHOOSE THE UNIVERSITY OF EXETER? >>

Part of the UK's elite Russell Group of research-intensive universities, the University of Exeter is globally recognised as a prestigious higher education institution of outstanding quality. Exeter students graduate with the confidence to take on the world – and you could too.

## 12<sup>th</sup>

in the UK

(The Times and The Sunday Times Good University Guide 2020)

## 100%

of undergraduate progression degrees at the University of Exeter Business School have an option with industrial work experience



My year at Microsoft helped me to become more professional while giving me insight into how a global company works. I had the chance to get involved in various projects across the company, meet lots of people and make lasting connections.

Stefaniia, Russia  
Completed an International Foundation and progressed to BSc (Hons) Accounting and Finance with Industrial Experience at the University of Exeter. Now works as a Senior Consultant for Financial Services Data and Analytics at PwC, London



### WORLD-CLASS TEACHING

With 23 subjects in the UK top 10<sup>1</sup>, you are guaranteed a top education here. The University has been awarded TEF Gold for teaching quality<sup>2</sup>, which means that you'll learn with experts at the forefront of their fields. The University's academic staff also carry out life-changing research – 98% of which is world-leading or internationally-recognised<sup>3</sup> – so your teaching will be informed by important research into global issues.

### TRIPLE ACCREDITED BUSINESS SCHOOL

The Business School is triple accredited by the three largest and most influential business school accreditation organisations worldwide:

- EFMD Quality Improvement System (EQUIS)
- The Association of MBAs (AMBA)
- The Association to Advance Collegiate Schools of Business (AACSB)

This prestigious triple accreditation is held by less than 100 schools globally!

### GLOBALLY EMPLOYABLE GRADUATES

Your graduate employability is the University's priority, so you will receive help in gaining the skills you need to compete in the international job market. You will benefit from:

- 64% of undergraduate progression degrees across all six colleges having an option with work experience
- a range of employability initiatives, such as the preparatory 'China Career Ready Programme'
- careers workshops and guidance from the Career Zone during your studies and after graduation
- the Exeter Award – helping you to develop professional skills and receive vital workplace experience

### OUTSTANDING CAREERS SERVICES

With 95% of graduates in employment or further study six months after graduation<sup>4</sup>, the University has award-winning careers services. These include:

- social enterprise support
- student entrepreneurship
- industrial experience or a year abroad

### WELCOMING COMMUNITY

With more than 23,500 students from 130 different countries, the University of Exeter is a truly international university. The University's campuses offer a safe, convenient and diverse community where you will find a warm welcome and a lot going on.

The Streatham Campus is considered one of the most beautiful in the UK, with gardens, lakes and parkland throughout. The historic city of Exeter is just a 15-minute walk from campus, so you can easily enjoy the restaurants, shops and cultural activities on offer.

### SUPPORTIVE LEARNING ENVIRONMENT

You'll receive lots of support during your degree. The International Student Support Office is the place to go for help and advice relating to your welfare. Staff will help you with any immigration and visa issues and organise events with societies for you to enjoy. Plus, the free Insessional programme means that you can still enjoy personalised English language support from INTO after you progress.

<sup>1</sup> The Times and The Sunday Times Good University Guide 2020

<sup>2</sup> Teaching Excellence Framework 2017

<sup>3</sup> Research Excellence Framework 2014

<sup>4</sup> HESA Destinations of Leavers from Higher Education 2016/17



## STREATHAM CAMPUS

- |                         |                     |
|-------------------------|---------------------|
| 1 INTO accommodation    | 6 Students' Guild   |
| 2 Student Health Centre | 7 Engineering       |
| 3 Sports Park           | 8 INTO Centre       |
| 4 Psychology            | 9 Forum and Library |
| 5 Biosciences           | 10 Business School  |

# 3<sup>rd</sup>

in the UK for Clubs and Societies

(Whatuni Student Choice Awards 2019)

# YOUR GUIDE TO CAMPUS LIFE >

You'll be based at the Streatham Campus during your INTO course. Surrounded by beautiful parkland and home to cutting-edge facilities, this inspirational campus is the ideal environment to live and study in. You'll experience the best of student life here.

### INTO STUDY CENTRE

The INTO Centre is the place to go to attend classes and study during your pathway programme, located opposite the Forum – a £48 million study and social space that houses lecture theatres, the library and other convenient facilities.

INTO University of Exeter provides university-style teaching to prepare you for the University. You'll benefit from:

- **a Learning Resource Centre** with a variety of academic materials and quiet study spaces
- **a large lecture theatre** for you to experience university-style lectures
- **two multimedia rooms** to access specialist software such as Geogebra, Solidworks and MATLAB
- **a science laboratory** with high quality equipment for hands-on learning
- **an INTO Café** to grab hot food, hot and cold drinks, and snacks

### UNIVERSITY FACILITIES

The Streatham Campus is a registered botanical garden filled with specialist plant collections, so you'll find plenty of pretty and peaceful spaces to study.

INTO students also have access to many of the University's facilities, such as:

- **The Forum** – home to useful facilities including a 24/7 three-floor library, a Student Services Centre, food outlets and learning spaces
- **Sports Park** – outstanding sports facilities, including a swimming pool, golf centre, football pitches and courts
- **Northcott Theatre** – an on-campus venue where you can watch music, dancing and theatre productions
- **Bill Douglas Cinema Museum** – one of the biggest TV and film material collections in the UK
- **Multi-faith Chaplaincy** – a safe space for personal and group worship

### STUDENT SOCIAL LIFE

A work-life balance is the key to academic success. This is recognised by the University of Exeter, who was voted one of the top 10 universities in England for international student experience!<sup>1</sup>

In your first week, you'll take part in an orientation programme to help you settle in. We'll help you adjust to life in Exeter by showing you around campus and introducing you to your classmates. Then, during your time here, you can:

- join one of 250+ clubs and societies covering a range of interests – from cultural societies and the International Society, to gaming, anime, music and arts societies, as well as sports clubs
- visit the Lemon Grove to attend fun events, club nights and live music gigs
- go to the Ram Bar to take part in quiz nights, karaoke and watch live sports
- participate in day trips across the UK

<sup>1</sup> Whatuni Student Choice Awards 2019



**INTO**  
UNIVERSITY  
OF EXETER

INTO Centre, Streatham Campus



Welcome to INTO

Welcome Desk, INTO Centre



Learning Resource Centre, INTO Centre

### WE'RE HERE TO SUPPORT YOU

From the moment you arrive, the INTO Student Services team will help you with any issues. Then, when you progress to the University of Exeter, you'll receive support from the International Student Support Office. INTO's services include:

- help opening a bank account and registering with a doctor
- extra support for students under the age of 18
- 24-hour telephone helpline for out-of-hours questions
- dedicated immigration advice and visa support



The classes here link English learning with study skills, so students are familiar with how to study once they progress to the University. The lessons incorporated taking notes – a skill I now use in lectures – as well as time management and presentation skills, which I hadn't done before.

Jerry (Haoxiang), China  
Completed a Graduate Diploma and progressed to MSc Finance and Investment at the University of Exeter



# EXETER >>

## A STUDENT CITY RICH WITH CULTURE

Exeter is a peaceful, scenic city surrounded by stunning countryside and coastal views. In addition to its rich history, there's a large student population, a vibrant atmosphere and lots of fun things to do – so living in Exeter will always be interesting.

### STAY ENTERTAINED

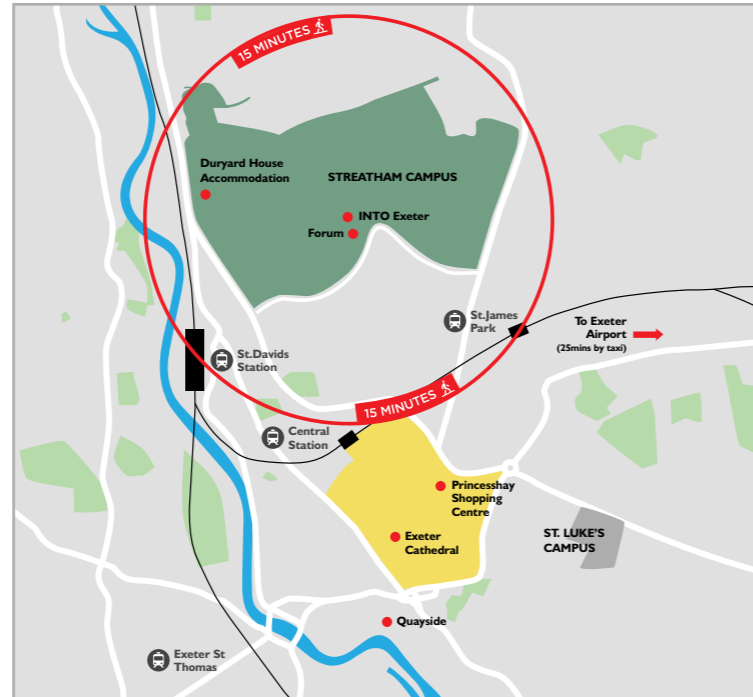
In the heart of the South West, this friendly and inviting city has both ancient landmarks and modern amenities. You'll discover:

- restaurants offering authentic international foods, from Thai and Chinese to Indian and Italian
- unique multi-cultural festivals that celebrate international food, music and the arts
- movie showings and live music concerts
- shopping malls selling your favourite brands
- easy travel to beaches from all of the University's campuses for fun in the sun

### EMBRACE THE CULTURE

Exeter is a compact city with lots to do. The Quayside is a popular riverside destination to relax, eat good food and go on boat trips.

Explore the Gothic Cathedral, Roman ruins and cobbled streets to discover the history and heritage of Exeter for yourself.



INTO Accommodation, Streatham Campus



Student Shop, INTO Accommodation

## YOUR HOME IN EXETER >>

With a choice of living options, including student residences on campus, homestay with carefully selected hosts and private accommodation, it's easy to find the perfect place to call home.

### INTO RESIDENCES

Just a 15-minute walk from the INTO Centre, you will join a friendly and welcoming student community, living in a safe, modern and furnished room.

Choose from three room types:

- **Superior Ensuite** – single bedroom with private shower and shared kitchen
- **Shared Studio** – two separate bedrooms with shared bathroom and kitchenette
- **Studio** – single bedroom with private shower and kitchenette

### HOMESTAY

Private room in a local host's home, sharing mealtimes and living spaces to experience British culture first-hand.

### PRIVATE STUDENT ACCOMMODATION

You can also choose to live in private student housing in and around Exeter.

### SUPPORTING YOU

In the INTO residences, you'll find staff available 24/7 to offer support, including extra support for students under 18.



95% student satisfaction for feeling safe and secure

(INTO Annual Student Experience Survey 2019)



Living at Duryard was the best decision ever. I used to run into people doing laundry or in the store – it was nice to live in a community with everyone right next to you. It felt safe and secure.

Dristi, India  
Completed an International Year One and progressed to BSc (Hons) Psychology at the University of Exeter



### WHAT OUR STUDENTS SAY THEY LOVE ABOUT EXETER:



Beautiful campuses



Compact city with everything you need



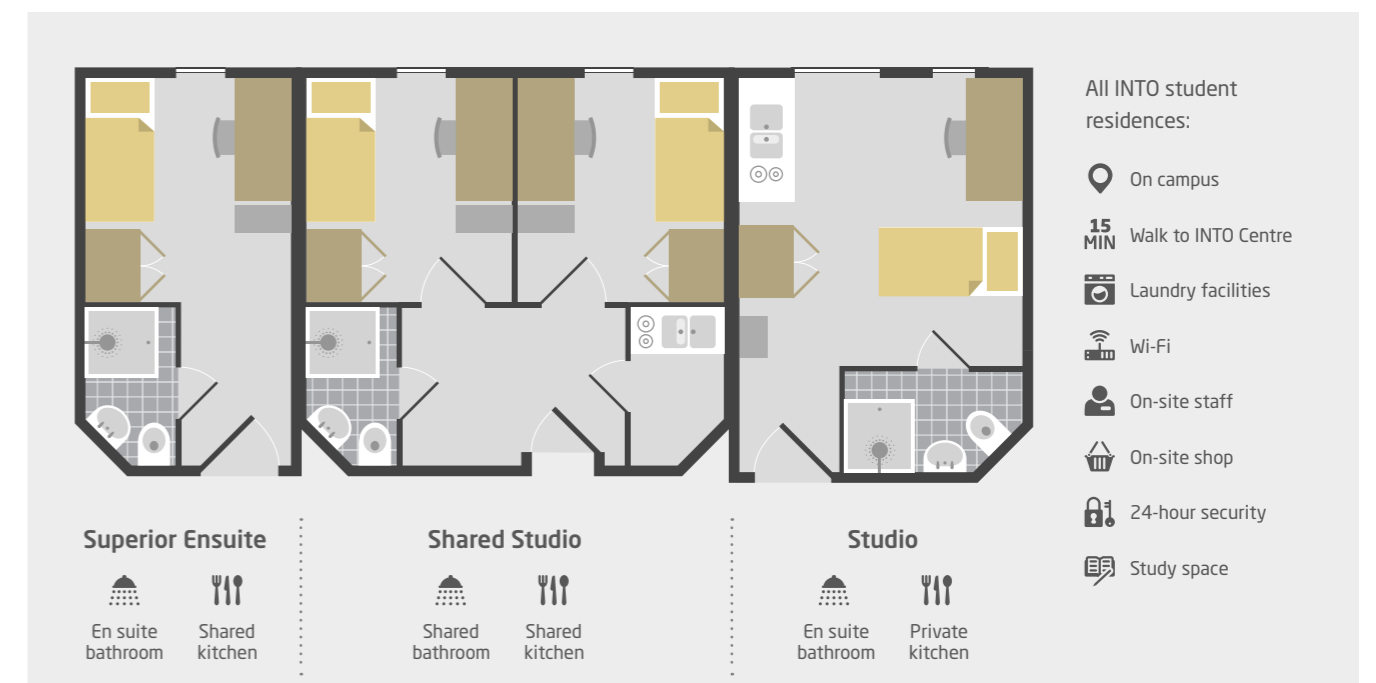
Lots of societies – there's something for everyone



Easy to travel around



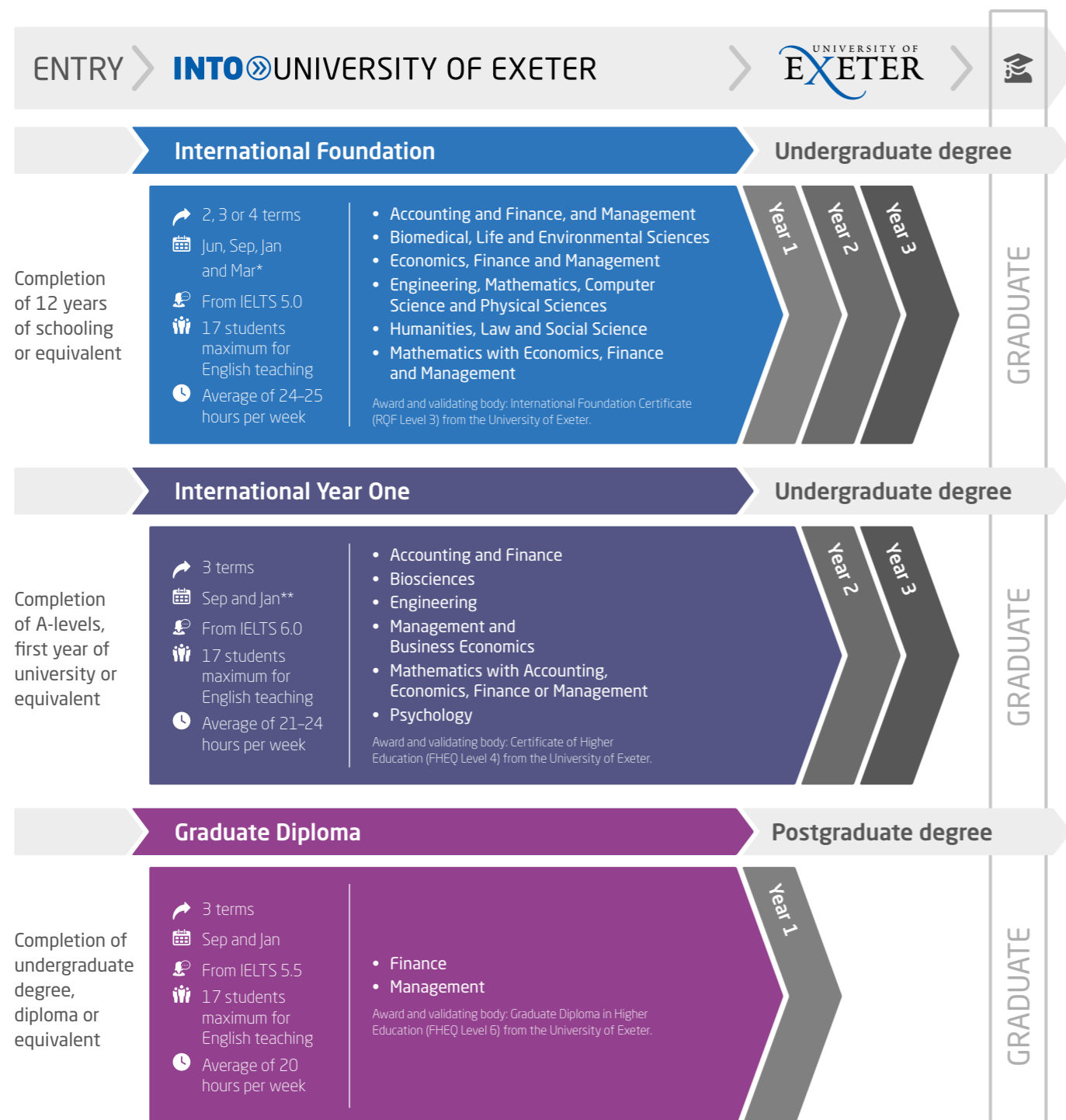
Feeling safe



INTO University of Exeter aims to provide the accommodation requested. However, there may be occasions when INTO University of Exeter is unable to provide the requested accommodation and reserves the right to offer an alternative type of accommodation instead. The price for any alternative accommodation may differ and will be confirmed to students at the time of their offer.

# Choosing your course

Prepare for your university degree with our tailored, academic pathway programmes designed in partnership with the University of Exeter. You'll benefit from university-style teaching for subject-based modules and high academic standards. Then, when it comes to progressing to your chosen degree, we'll support you with your university application.



\* Mar intake is the only option for the 2-term pathway in Accounting and Finance, and Management.

\*\* Jan intake is only available for the Accounting and Finance, and Management and Business Economics pathways.

Please note that course length and start month options may vary depending on the pathway chosen. Please visit [www.intostudy.com/exeter/courses](http://www.intostudy.com/exeter/courses) for full information.

## International Foundation

### Accounting and Finance, and Management (2 term) - AFM

- > Study the application of management in a shorter 6-month programme before progressing to the University's triple accredited Business School.
- > The University of Exeter is one of the top 150 universities in the world for Accounting and Finance (QS World University Rankings 2020).

#### What will I study?

You will need to earn 120 credits from the following modules:

- |  |   |
|--|---|
| English for Business (20 credits)          | Introduction to Accounting and Finance (20 credits) |
| Mathematics for Business (20 credits)      | Introduction to Economics (20 credits)              |
| Independent Study in Business (20 credits) | Introduction to Management (20 credits)             |

Progress to one of 7 degrees. Find out more online at [www.intostudy.com/exeter/AFM](http://www.intostudy.com/exeter/AFM)

### Biomedical, Life and Environmental Sciences - sci

- > The University of Exeter is joint 10th in the UK for Biological Sciences (The Times and The Sunday Times Good University Guide 2020).
- > Benefit from the INTO Centre's state-of-the-art science laboratory to carry out practical experiments and complete assessments during your pathway programme.

#### What will I study?

You will need to earn 120 credits from the following modules:

- |   |   |
|---|---|
| Academic English for Engineering and Science (30 credits) | Engineering and Science Research Project (10 credits) |
| Foundation Mathematics (20 credits)                       | Introduction to Biological Science (20 credits)       |

#### Specialist modules (2 out of 4, depending on progression degree):

- |  |  |
|--|--|
| Advanced Mathematics (20 credits)              | Introduction to Human Biology (20 credits) |
| Introduction to Chemical Sciences (20 credits) | Introduction to Psychology (20 credits)    |

Progress to 40+ degrees. Find out more online at [www.intostudy.com/exeter/SCI](http://www.intostudy.com/exeter/SCI)

### Economics, Finance and Management - ECON

- > The University of Exeter is one of the top 150 universities in the world for Business and Economics (Times Higher Education World University Rankings 2020).
- > Opportunity to progress to an undergraduate degree in a business, finance or economics subject area at the University's triple accredited Business School.

#### What will I study?

You will need to earn 120 credits from the following modules:

- |  |   |
|--|---|
| Academic English for Business (30 credits) | Introduction to Accounting and Finance (20 credits) |
| Business Research Project (10 credits)     | Introduction to Economics (20 credits)              |

#### Specialist modules (2 out of 4, depending on progression degree):

- |   |                                       |
|---|---------------------------------------|
| Foundation Mathematics (20 credits)     | Advanced Mathematics (20 credits)     |
| Introduction to Management (20 credits) | Mathematics for Business (20 credits) |

Progress to 16 degrees. Find out more online at [www.intostudy.com/exeter/ECON](http://www.intostudy.com/exeter/ECON)

Progress to Year 1 of an undergraduate degree at the University of Exeter

#### Start date

2 term: Mar

#### English language entry requirements\*

2 term: IELTS 6.5 (with a minimum of 6.0 in all subskills) or equivalent.

#### Age requirement

16 years and above\*\*

#### Start date

3 term: Sep or Jan  
4 term: Jun or Sep

#### English language entry requirements\*

3 term: IELTS 5.5 (with a minimum of 5.0 in writing and 4.5 in all other subskills) or equivalent.

4 term: IELTS 5.0 (with a minimum of 4.5 in all subskills) or equivalent.

#### Age requirement

16 years and above\*\*

#### Start date

3 term: Sep or Jan  
4 term: Jun or Sep

#### English language entry requirements\*

3 term: IELTS 5.5 (with a minimum of 5.0 in writing and 4.5 in all other subskills) or equivalent.

4 term: IELTS 5.0 (with a minimum of 4.5 in all subskills) or equivalent.

#### Age requirement

16 years and above\*\*

\* If you do not meet the minimum English language requirements, you should apply for our Academic English course. See page 18 for more information.

\*\* All students must be 17 by the end of their academic year of study.

Progress to Year 1 of an undergraduate degree at the University of Exeter

#### Start date

3 term: Sep or Jan  
4 term: Jun or Sep

#### English language entry requirements\*

3 term: IELTS 5.5 (with a minimum of 5.0 in writing and 4.5 in all other subskills) or equivalent.

4 term: IELTS 5.0 (with a minimum of 4.5 in all subskills) or equivalent.

#### Age requirement

16 years and above\*\*

#### Start date

3 term: Sep or Jan  
4 term: Jun or Sep

#### English language entry requirements\*

3 term: IELTS 5.5 (with a minimum of 5.0 in writing and 4.5 in all other subskills) or equivalent.

4 term: IELTS 5.0 (with a minimum of 4.5 in all subskills) or equivalent.

#### Age requirement

16 years and above\*\*

#### Start date

3 term: Sep or Jan  
4 term: Jun or Sep

#### English language entry requirements\*

3 term: IELTS 5.5 (with a minimum of 5.0 in writing and 4.5 in all other subskills) or equivalent.

4 term: IELTS 5.0 (with a minimum of 4.5 in all subskills) or equivalent.

#### Age requirement

16 years and above\*\*

\* If you do not meet the minimum English language requirements, you should apply for our Academic English course. See page 18 for more information.

\*\* All students must be 17 by the end of their academic year of study.

## International Foundation

### Engineering, Mathematics, Computer Science and Physical Sciences - ENG

- > The University of Exeter is one of the top 150 universities in the world for Physical Sciences (Times Higher Education World University Rankings 2020).
- > Benefit from industry experience available on many Engineering degrees at the University of Exeter, through summer placements or a year in industry.

#### What will I study?

You will need to earn 120 credits from the following modules:

Academic English for Engineering and Science (30 credits)	Advanced Mathematics (20 credits)
Foundation Mathematics (20 credits)	Mathematics for Engineering (20 credits)
Introduction to Physical Science (20 credits)	Engineering and Science Research Project (10 credits)

Progress to 40+ degrees. Find out more online at [www.intostudy.com/exeter/ENG](http://www.intostudy.com/exeter/ENG)

### Humanities, Law and Social Science - HUM

- > The University of Exeter is one of the top 100 universities in the world for Arts and Humanities (Times Higher Education World University Rankings 2020).
- > Progress to a wide range of degrees in various colleges including the College of Humanities and the Law School.

#### What will I study?

You will need to earn 120 credits from the following modules:

Academic English for Humanities and Social Sciences (30 credits)	Introduction to Social Science (20 credits)
	Liberal Arts with Research Project (30 credits)

#### Specialist modules (2 out of 3, depending on progression degree):

- Introduction to English Law (20 credits)
- Introduction to Film and Literary Studies (20 credits)
- Introduction to World Politics and International Relations (20 credits)

Progress to 60+ degrees. Find out more online at [www.intostudy.com/exeter/HUM](http://www.intostudy.com/exeter/HUM)

### Mathematics with Economics, Finance and Management - FMATH

- > The University of Exeter is one of the top 20 universities in the UK for Mathematics (The Complete University Guide 2020).
- > Progress to a degree at the College of Engineering, Mathematics and Physical Sciences, taught in partnership with the triple accredited Business School.

#### What will I study?

You will need to earn 120 credits from the following modules:

Academic English for Business (30 credits)	Introduction to Accounting and Finance (20 credits)
Business Research Project (10 credits)	Introduction to Economics (20 credits)

#### Specialist modules (2 out of 4, depending on progression degree):

- Foundation Mathematics (20 credits)
- Advanced Mathematics (20 credits)
- Introduction to Management (20 credits)
- Mathematics for Business (20 credits)

Progress to 4 degrees. Find out more online at [www.intostudy.com/exeter/FMATH](http://www.intostudy.com/exeter/FMATH)

## International Foundation progression degree options

There are more than 150 progression degree options at the University of Exeter in September 2022. You can progress to these from one of our INTO University of Exeter International Foundation programmes. Below is a selection of some of the most popular. See pages 11-12 for more details.

Degree	Pathway(s)	Specific requirements	English level	Academic grade
Accounting and Finance BSc (Hons) <b>S</b>	AFM or ECON		65%	67%
Biological and Medicinal Chemistry BSc (Hons) <b>I S †</b>	SCI		65%	63%
Biological Sciences BSc (Hons) <b>I S †</b>	SCI		65%	63%
Business BSc (Hons) <b>P I †</b>	AFM or ECON		65%	63%
Business and Laws BBL (Hons) <b>P I †</b>	AFM, ECON or HUM		65%	63%
Business and Management BA (Hons) <b>I S †</b>	AFM or ECON		65%	67%
Business Economics BSc (Hons) <b>I S †</b>	ECON		65%	67%
Civil Engineering BEng (Hons) * <b>I †</b>	ENG	60% average in Foundation Mathematics and Advanced Mathematics. 40% in Mathematics for Engineers.	65%	63%
Computer Science BSc (Hons) * <b>I †</b>	ENG	60% average in Foundation Mathematics and Advanced Mathematics.	65%	63%
Data Science BSc (Hons) *	ENG	60% average in Foundation Mathematics and Advanced Mathematics.	65%	65%
Drama BA (Hons) <b>I S †</b>	HUM	Compulsory module: Film and Literary Studies. Interview and studio session required.	65%	63%
Economics BSc (Hons) <b>I †</b>	ECON	Compulsory module: Foundation Mathematics.	65%	67%
Economics and Finance BSc (Hons) <b>I S †</b>	ECON	Compulsory module: Foundation Mathematics.	65%	67%
Electronic Engineering BEng (Hons) * <b>I †</b>	ENG	60% average in Foundation Mathematics and Advanced Mathematics. 40% in Mathematics for Engineers.	65%	63%
Engineering and Entrepreneurship BEng (Hons)	ENG	60% average in Foundation Mathematics and Advanced Mathematics. 40% in Mathematics for Engineers.	65%	63%
Engineering and Management BEng (Hons) * <b>I †</b>	ENG	60% average in Foundation Mathematics and Advanced Mathematics. 40% in Mathematics for Engineers.	65%	63%
English BA (Hons) <b>I S †</b>	HUM	67% in Film and Literary Studies module.	65%	67%
Environmental Science BSc (Hons) * <b>P I S †</b>	SCI		65%	63%
Exercise and Sport Sciences BSc (Hons) * <b>S</b>	SCI	Compulsory module: Advanced Mathematics.	65%	63%
Film and Television Studies BA (Hons) <b>I S †</b>	HUM	63% in Film and Literary Studies module.	65%	63%
Geography BA/BSc (Hons) <b>I S †</b>	SCI or HUM		65%	67%
Geology BSc (Hons) * <b>P</b>	SCI or ENG		65%	63%
Global Politics BA (Hons) <b>P S</b>	HUM		65%	63%
History BA (Hons) <b>I S †</b>	HUM		65%	67%
International Relations BA (Hons) <b>S</b>	HUM		65%	67%
Law LLB (Hons)	HUM		65%	67%
Law with Business LLB (Hons) <b>I S †</b>	AFM, ECON or HUM		65%	63%
Liberal Arts BA (Hons) <b>I S †</b>	HUM		65%	67%
Marine Biology BSc (Hons) * <b>P I S †</b>	SCI	Compulsory module: Advanced Mathematics.	65%	63%
Marketing and Management BA (Hons) <b>I S †</b>	AFM or ECON		65%	67%
Mathematics BSc (Hons) *	ENG	65% average in Foundation Mathematics and Advanced Mathematics.	65%	67%
Mathematics with Accounting BSc (Hons) * <b>I †</b>	ENG or FMATH	65% average in Foundation Mathematics and Advanced Mathematics.	65%	67%
Mathematics with Economics BSc (Hons) * <b>I †</b>	ENG or FMATH	65% average in Foundation Mathematics and Advanced Mathematics.	65%	67%
Mathematics with Finance BSc (Hons) * <b>I †</b>	ENG or FMATH	65% average in Foundation Mathematics and Advanced Mathematics.	65%	67%
Mathematics with Management BSc (Hons) * <b>I †</b>	ENG or FMATH	65% average in Foundation Mathematics and Advanced Mathematics.	65%	67%
Mechanical Engineering BEng (Hons) * <b>I †</b>	ENG	60% average in Foundation Mathematics and Advanced Mathematics. 40% in Mathematics for Engineers.	65%	63%
Medical Sciences BSc (Hons) <b>I †</b>	SCI	Compulsory module: Introduction to Human Biology.	65%	63%
Mining Engineering BEng (Hons) * <b>P</b>	ENG	60% average in Foundation Mathematics and Advanced Mathematics. 40% in Mathematics for Engineers.	65%	63%
Natural Sciences BSc (Hons) *	SCI	60% average in Foundation Mathematics and Advanced Mathematics.	65%	67%
Neuroscience BSc (Hons) * <b>I †</b>	SCI	Compulsory module: Introduction to Human Biology.	65%	63%
Politics BA (Hons) <b>S</b>	HUM		65%	67%
Politics and Management BA (Hons) <b>P S</b>	ECON or HUM		65%	63%
Politics, Philosophy and Economics BA (Hons) <b>S</b>	ECON or HUM		65%	67%
Psychology BSc (Hons) <b>S</b>	SCI	Compulsory module: Introduction to Psychology.	65%	67%
Renewable Energy Engineering BEng (Hons) * <b>P</b>	ENG	60% average in Foundation Mathematics and Advanced Mathematics. 40% in Mathematics for Engineers.	65%	63%
Sociology BSc (Hons) <b>S</b>	HUM		65%	63%
Zoology BSc (Hons) * <b>P I S †</b>	SCI		65%	63%

Find comprehensive information on all academic pathway programmes, degree options and progression requirements at: [www.intostudy.com/exeter/courses](http://www.intostudy.com/exeter/courses)

- I** Degree option with industrial experience also available
- S** Degree option with study abroad also available
- P** Degree programme is taught at the Penryn Campus only

Please note: English level and academic progression requirements are correct to the best of our knowledge at the time of going to print. In some circumstances, these may change throughout the year - please visit [www.intostudy.com/exeter/courses](http://www.intostudy.com/exeter/courses) for the most up-to-date information.

\* Undergraduate Master's option also available

† Industrial experience option may have additional requirements

Progress to Year 2 of an undergraduate degree at the University of Exeter

#### Start date

3 term: Sep or Jan

#### English language entry requirements\*

3 term: IELTS 6.0 (with a minimum of 5.5 in writing and no less than 5.0 in other subskills) or equivalent.

#### Age requirement

16 years and above\*\*

## International Year One

### Accounting and Finance - ACCT

- > The University of Exeter is one of the top 150 universities in the world for Accounting and Finance (QS World University Rankings 2020).
- > Opportunity to progress to an undergraduate degree in accounting with finance or business at the University's triple accredited Business School.

#### What will I study?

You will need to earn 120 credits from the following modules:

English Language Skills for Undergraduate Studies (30 credits)	Management Concepts and Practice (15 credits)
Introduction to Financial Accounting (15 credits)	Principles of Economics (Macroeconomics) (15 credits)
Introduction to Management Accounting (15 credits)	Principles of Economics (Microeconomics) (15 credits)
Introduction to Statistics (15 credits)	

Progress to **3** degrees. Find out more online at [www.intostudy.com/exeter/ACCT](http://www.intostudy.com/exeter/ACCT)

### Biosciences - BIO

- > Exeter is one of the top 10 universities in the UK for Biological Sciences (The Times and The Sunday Times Good University Guide 2020).
- > Field work opportunities once you progress to the University, with previous destinations including coral reefs in the Bahamas and rainforests in Borneo.
- > Some pathway modules are taught at the College of Life and Environmental Sciences alongside first year students.

#### What will I study?

You will need to earn 120 credits from the following modules:

Academic English for Biosciences (30 credits)	<b>Specialist modules (3 out of 6):</b>
Fundamental Principles for Bioscientists (15 credits)	Animals (15 credits)
Genetics (15 credits)	Biochemistry (15 credits)
Microbiology (15 credits)	Cells (15 credits)
	Ecology (15 credits)
	Plants (15 credits)
	Structure and Reactivity of Organic Compounds (15 credits)

Progress to **6** degrees. Find out more online at [www.intostudy.com/exeter/BIO](http://www.intostudy.com/exeter/BIO)

### Engineering - IYOE

- > The University of Exeter is 12th in the UK for Civil Engineering (The Times and The Sunday Times Good University Guide 2020).
- > Some pathway modules are taught at the College of Engineering, Mathematics and Physical Sciences alongside first year students.

#### What will I study?

You will need to earn 120 credits from the following modules:

Engineering Mathematics and Scientific Computing (30 credits)	<b>Specialist modules (1 out of 2):</b>
English Language and Study Skills for Engineering (30 credits)	Fundamentals of Mechanics and Electronics (30 credits)
Multi-Disciplinary Challenge Project (30 credits)	Fundamentals of Mechanics and Materials (30 credits)

Progress to **11** degrees. Find out more online at [www.intostudy.com/exeter/IYOE](http://www.intostudy.com/exeter/IYOE)

#### Start date

3 term: Sep

#### English language entry requirements\*

3 term: IELTS 6.0 (with a minimum of 5.0 in all subskills) or equivalent.

#### Age requirement

16 years and above\*\*

\* If you do not meet the minimum English language requirements, you should apply for our Academic English course. See page 18 for more information.

\*\* All students must be 17 by the end of their academic year of study.

## International Year One

### Management and Business Economics - BUS

- > The University of Exeter's Business School is 1st in the UK for graduate outcomes (HESA Destinations of Leavers from Higher Education 2016/17).
- > Opportunity to progress to an undergraduate degree in a business, management or economics subject area at the University's triple accredited Business School.

#### What will I study?

You will need to earn 120 credits from the following modules:

Accounting for Management and Economics (15 credits)	Management Concepts and Practice (15 credits)
English Language Skills for Undergraduate Studies (30 credits)	Principles of Economics (Macroeconomics) (15 credits)
Fundamentals of Marketing (15 credits)	Principles of Economics (Microeconomics) (15 credits)
Introduction to Statistics (15 credits)	

Progress to **3** degrees. Find out more online at [www.intostudy.com/exeter/BUS](http://www.intostudy.com/exeter/BUS)

### Mathematics with Accounting, Economics, Finance or Management - YMATH

- > The University of Exeter is one of the top 20 universities in the UK for Mathematics (The Complete University Guide 2020).
- > Choose from four sub-pathway options with tailored specialist modules, depending on your intended progression degree at the University.

#### What will I study?

You will need to earn 120 credits from the following modules:

##### Core modules:

English Language Skills for Undergraduate Studies (30 credits)  
Mathematical Methods (30 credits)  
Mathematical Structures (30 credits)

##### Specialist modules – Mathematics with Accounting sub-pathway:

Introduction to Financial Accounting (15 credits)  
Introduction to Management Accounting (15 credits)

##### Specialist modules – Mathematics with Economics sub-pathway:

Economics 1 (15 credits)  
Economics 2 (15 credits)

##### Specialist modules – Mathematics with Finance sub-pathway:

Economics 1 (15 credits)  
Economics 2 (15 credits)

##### Specialist modules – Mathematics with Management sub-pathway:

Management Concepts and Practice (15 credits)  
Fundamentals of Marketing (15 credits)

Progress to **4** degrees. Find out more online at [www.intostudy.com/exeter/YMATH](http://www.intostudy.com/exeter/YMATH)

Progress to Year 2 of an undergraduate degree at the University of Exeter

#### Start date

3 term: Sep or Jan

#### English language entry requirements\*

3 term: IELTS 6.0 (with a minimum of 5.5 in writing and no less than 5.0 in other subskills) or equivalent.

#### Age requirement

16 years and above\*\*

#### Start date

3 term: Sep

#### English language entry requirements\*

3 term: IELTS 6.0 (with a minimum of 5.5 in writing and no less than 5.0 in other subskills) or equivalent.

#### Age requirement

16 years and above\*\*

\* If you do not meet the minimum English language requirements, you should apply for our Academic English course. See page 18 for more information.

\*\* All students must be 17 by the end of their academic year of study.



Progress to Year 2 of an undergraduate degree at the University of Exeter

#### Start date

3 term: Sep

#### English language entry requirements\*

3 term: IELTS 6.0 (with a minimum of 5.5 in writing and no less than 5.0 in other subskills) or equivalent.

#### Age requirement

16 years and above\*\*

\* If you do not meet the minimum English language requirements, you should apply for our Academic English course. See page 18 for more information.

\*\* All students must be 17 by the end of their academic year of study.

## International Year One

### Psychology - PSY

- > The University of Exeter is 8th in the UK for Psychology (The Complete University Guide 2020).
- > Some pathway modules are taught at the College of Life and Environmental Sciences alongside first year students.

#### What will I study?

You will need to earn 120 credits from the following modules:

Cognition, Emotion and Development (15 credits)  
 Introduction to Biological Psychology (15 credits)  
 Introduction to Clinical Psychology (15 credits)  
 Introduction to Research Methods (15 credits)  
 Introduction to Social Psychology (15 credits)  
 Introduction to Statistics (15 credits)  
 Psychological Concepts, Language and Study Skills (30 credits)

Progress to **BSc (Hons) Psychology**. Find out more online at [www.intostudy.com/exeter/PSY](http://www.intostudy.com/exeter/PSY)

### International Year One progression degree options

There are 27 progression degree options at the University of Exeter in September 2022 – you can find the full list below.

Degree	Pathway(s)	Specific requirements	English level	Academic grade
Accounting and Business BSc (Hons) <sup>1</sup>	ACCT	Average of 55% across Introduction to Financial Accounting module and Introduction to Management Accounting module.	65%	55%
Accounting and Finance BSc (Hons) <sup>1</sup>	ACCT	Average of 55% across Introduction to Financial Accounting module and Introduction to Management Accounting module.	65%	55%
Animal Behaviour BSc (Hons) <sup>2</sup> <sup>3</sup> <sup>4</sup>	BIO	40% in Fundamental Principles for Bioscientists module. Compulsory modules: Animals, Ecology and Plants.	65%	50%
Biochemistry BSc (Hons) <sup>1</sup> <sup>5</sup>	BIO	40% in Fundamental Principles for Bioscientists module. Compulsory modules: Biochemistry; Cells; Structure and Reactivity of Organic Compounds.	65%	50%
Biological Sciences BSc (Hons) <sup>1</sup> <sup>5</sup>	BIO	40% in Fundamental Principles for Bioscientists module. Compulsory modules: Biochemistry, Cells and Plants.	65%	50%
Business and Management BSc (Hons) <sup>1</sup>	BUS	Average of 55% across Management Concepts and Practice module and Fundamentals of Marketing module.	65%	55%
Business Economics BSc (Hons) <sup>1</sup>	ACCT or BUS	Average of 55% across Principles of Economics (Macroeconomics) module and Principles of Economics (Microeconomics) module.	65%	55%
Civil Engineering BEng (Hons) <sup>1</sup>	IYOE		65%	50%
Civil Engineering MEng (Hons) <sup>1</sup>	IYOE		65%	50%
Conservation Biology and Ecology BSc (Hons) <sup>2</sup> <sup>3</sup> <sup>4</sup>	BIO	40% in Fundamental Principles for Bioscientists module. Compulsory modules: Animals, Ecology and Plants.	65%	50%
Electronic Engineering BEng (Hons) <sup>1</sup>	IYOE	Compulsory module: Fundamentals of Mechanics and Electronics.	65%	50%
Electronic Engineering MEng (Hons) <sup>1</sup>	IYOE	Compulsory module: Fundamentals of Mechanics and Electronics.	65%	50%
Engineering BEng (Hons)	IYOE		65%	50%
Engineering MEng (Hons)	IYOE		65%	50%
Engineering and Entrepreneurship BEng (Hons)	IYOE		65%	50%
Engineering and Management BEng (Hons) <sup>1</sup>	IYOE		65%	50%
Engineering and Management MEng (Hons) <sup>1</sup>	IYOE		65%	50%
Evolutionary Biology BSc (Hons) <sup>2</sup> <sup>3</sup> <sup>4</sup>	BIO	40% in Fundamental Principles for Bioscientists module. Compulsory modules: Animals, Ecology and Plants.	65%	50%
Marketing and Management BSc (Hons) <sup>1</sup>	BUS	Average of 55% across Management Concepts and Practice module and Fundamentals of Marketing module.	65%	55%
Mathematics with Accounting BSc (Hons)	YMATH		65%	50%
Mathematics with Economics BSc (Hons)	YMATH		65%	50%
Mathematics with Finance BSc (Hons)	YMATH		65%	50%
Mathematics with Management BSc (Hons)	YMATH		65%	50%
Mechanical Engineering BEng (Hons) <sup>1</sup>	IYOE	Compulsory module: Fundamentals of Mechanics and Materials.	65%	50%
Mechanical Engineering MEng (Hons) <sup>1</sup>	IYOE	Compulsory module: Fundamentals of Mechanics and Materials.	65%	50%
Psychology BSc (Hons)	PSY	40% in Introduction to Statistics module, to include 40% in the January exam component of the module.	65%	50%
Zoology BSc (Hons) <sup>2</sup> <sup>3</sup> <sup>4</sup>	BIO	40% in Fundamental Principles for Bioscientists module. Compulsory modules: Animals, Ecology and Plants.	65%	50%

<sup>1</sup> Degree option with industrial experience also available

<sup>5</sup> Degree option with study abroad also available

<sup>2</sup> Degree programme is taught at the Penryn Campus only

Please note: English level and academic progression requirements are correct to the best of our knowledge at the time of going to print. In some circumstances, these may change throughout the year – please visit [www.intostudy.com/exeter/courses](http://www.intostudy.com/exeter/courses) for the most up-to-date information.

\* Industrial experience option may have additional requirements

## Graduate Diploma

### Finance - FIN

- > The University of Exeter is top 100 in the world for Masters in Finance (QS World University Rankings 2020).
- > Progress to a postgraduate degree at the Xfi Centre for Finance and Investment to access the financial databases and software you'll need for a career in finance.

#### What will I study?

You will need to earn 120 credits from the following modules:

English Language and Communication Skills (30 credits)      Human Resource Management (15 credits)  
 Financial Management (15 credits)      Marketing Management (15 credits)  
 Fundamentals of Investments (30 credits)      Operations Management (15 credits)

Progress to **7** degrees. Find out more online at [www.intostudy.com/exeter/FIN](http://www.intostudy.com/exeter/FIN)

### Management - MAN

- > The University of Exeter is one of the top 130 universities in the world for Masters in Management (QS World University Rankings 2020).
- > Progress to a degree accredited by the Chartered Management Institute, the Chartered Institute of Personnel and Development, or other professional bodies.

#### What will I study?

You will need to earn 120 credits from the following modules:

English Language and Communication Skills (30 credits)      Human Resource Management (15 credits)  
 Financial Management (15 credits)      Marketing Management (15 credits)  
 Operations Management (15 credits)

#### Specialist modules (1 out of 2, depending on progression degree):

Business-based Dissertation (30 credits)

Public Administration-based Dissertation (30 credits)

Progress to **11** degrees. Find out more online at [www.intostudy.com/exeter/MAN](http://www.intostudy.com/exeter/MAN)

### Graduate Diploma progression degree options

Degree	Pathway(s)	Specific requirements	English level	Academic grade
Accounting and Finance MSc	FIN		65%	67%
Accounting and Taxation MSc	FIN		65%	65%
Engineering Business Management MSc	MAN		65%	63%
Entrepreneurship and Innovation MSc	MAN	A personal statement explaining your reasons for choosing this postgraduate programme is required.	70%	65%
Finance and Investment MSc**	FIN	Average of 65% in the two Finance modules.	65%	65%
Finance and Management MSc**	FIN	Average of 63% in the two Finance modules.	65%	63%
Finance and Marketing MSc**	FIN	Average of 65% in the two Finance modules.	65%	65%
Financial Analysis and Fund Management MSc	FIN	Average of 70% in the two Finance modules.	70%	70%
Human Resource Management MSc**	MAN		70%	63%
International Business MSc	MAN		65%	63%
International Human Resource Management MSc	MAN		65%	63%
International Supply Chain Management MSc	MAN		65%	63%
International Tourism Management MSc	MAN		65%	63%
Management MSc	MAN		70%	67%
Marketing MSc	MAN		70%	65%
Masters Public Administration MPA	MAN	A specialist dissertation in Public Administration is required.	65%	65%
Money, Banking and Finance MSc	FIN		65%	67%
The Exeter MBA	MAN	60% in a Business-based dissertation. 3 years' relevant graduate work experience, assessed by CV submission prior to receiving offer.	70%	70%

Please note: English level and academic progression requirements are correct to the best of our knowledge at the time of going to print. In some circumstances, these may change throughout the year – please visit [www.intostudy.com/exeter/courses](http://www.intostudy.com/exeter/courses) for the most up-to-date information.

\*\* This programme can be taken as a 9 or 12 month option

Progress to a postgraduate degree at the University of Exeter

#### Start date

3 term: Sep or Jan

4 term: Sep or Jun

#### English language entry requirements\*

3 term: IELTS 5.5 (with a minimum of 5.5 in all subskills) or equivalent.

4 term (with Pre-sessional English for Graduate Diploma): IELTS 5.0 (with at least one subskill at 5.5 and no subskill below 5.0) or equivalent.

#### Age requirement

16 years and above\*\*

#### Start date

3 term: Sep or Jan

4 term: Sep or Jun

#### English language entry requirements\*

3 term: IELTS 5.5 (with a minimum of 5.5 in all subskills) or equivalent.

4 term (with Pre-sessional English for Graduate Diploma): IELTS 5.0 (with at least one subskill at 5.5 and no subskill below 5.0) or equivalent.

#### Age requirement

16 years and above\*\*

\* If you do not meet the minimum English language requirements, you should apply for our Academic English course. See page 18 for more information.

\*\* All students must be 17 by the end of their academic year of study.

Improve your English language skills to prepare for further academic study

**Start date**

16 weeks: Aug,  
1-4 terms: Sep, Jan, Apr or Jun

**English language entry requirements**

From IELTS 3.0

**Age requirement**

16 years and above

**Class size and hours**

Maximum of 16 students  
30 learning hours per week, with  
25 hours of face-to-face contact

Improve your English language skills for work, socialising and travel in the UK

**Start date**

All months of the year

**English language entry requirements**

All English levels, from elementary to upper intermediate

**Age requirement**

16 years and above

**Class size and hours**

Maximum of 16 students  
20 hours per week on average

Improve your English language skills to the level required by your chosen degree

**Start date**

10 weeks: Jun  
6 weeks: Jul

**English language entry requirements**

10 weeks: IELTS 5.5 (minimum of 5.0 in each subskill) or equivalent.

6 weeks: IELTS 6.0 (with a minimum of 5.5 in each subskill) or equivalent.

See page 17 for information about Pre-session English for Graduate Diploma.

**Age requirement**

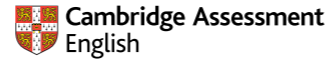
16 years and above

**Class size and hours**

Maximum of 18 students  
20-21 hours per week on average

## English courses

### EN Academic English



> For students who need to increase their IELTS level in order to progress to university. This intensive course offers rapid progress of up to one IELTS band per term.

**Course features**

- You will learn through face-to-face teaching and online learning to communicate effectively in English and improve your reading, writing, speaking and listening skills.
- A diverse social programme and effective academic content will help you to develop the fluency and confidence you need to progress to further study.
- Access INTO's interactive online learning platform, MyINTO, outside of class to practise your English language skills, complete tasks and engage with your classmates.
- Developed in partnership with Cambridge English, the world leader in language assessment, INTO English Language Assessment (IELA) provides a standardised online assessment of all four core language skills throughout your studies. The IELA test is available to you as an additional form of assessment and allows you to choose from a wide range of Higher Education institutions.

### EN General English

> For students who want to increase their confidence in using everyday English for general life, work, socialising and travel in the UK.

**Course features**

- Build your confidence in core English language skills in everyday situations, from speaking, reading, listening and writing to vocabulary and grammar.
- Year-round courses have flexible start dates and course lengths, from 2-52 weeks.
- Study on a beautiful campus that has lakes, woodland and gardens to enjoy.
- Take part in a range of activities and socialise with students from all over the world to build on your English language ability and make new friends.

### EN Pre-session English

> For students who are academically qualified and hold an offer from the University of Exeter, but need to improve their English language skills to the level required for their chosen degree.

**Course features**

- Prepare for your degree by learning English language and study skills tailored to the requirements of university study in a 6 or 10 week course.
- Learn from experienced teachers and alongside students who will be studying the same - or similar - subjects as you at the University.
- Study academic vocabulary related to your degree and learn how to give presentations on areas of academic interest to practise this terminology.
- Get used to living and studying in the UK and adjust to the style, challenges and expectations of the UK higher education system.

# SUCCESSFUL INTO ALUMNI



“ I enjoyed the freedom of selecting modules. Although I did Accounting and Finance, I could choose to do management modules, languages or mathematics modules. This was great because I could learn even more about what I'm interested in.”

Jaewon Kim  
Completed an International Year One and progressed BSc (Hons) Accounting and Finance at the University of Exeter, taking an internship at KPMG in Myanmar. Now working as a Consulting Analyst at McKinsey & Company in Yangon, Myanmar



“ With an industrial placement, you gain more industry insight and develop employability and communication skills. By gaining hands-on experience, I found my passion for sales, project and pipeline management, as well as a clear career plan.”

Hugo, Hong Kong

Completed an International Foundation and progressed to BA (Hons) Management and Marketing with Industrial Experience at the University of Exeter, taking an Industrial Placement as a Business Development Associate at Parcelly in London, UK

“ I strongly believe that we need more women in STEM, and I wanted to pass on my skills to other girls, so I co-founded a company called Code for Girls. Being at INTO is good preparation for university and your career.”

Deema, Saudi Arabia

Completed an International Foundation and progressed to BSc (Hons) Computer Science with Proficiency in Spanish at the University of Exeter. Now the Co-founder and Instructor of Code For Girls in Riyadh, Saudi Arabia



# Dates and prices

The cost of your programme may vary depending on factors including the pathway chosen and programme length. The following guide to costs is based on pricing for the current academic year and provides an indication of the cost of attendance for some of our pathways. For specific cost information, please refer online: [www.intostudy.com/exeter/courses](http://www.intostudy.com/exeter/courses)

## Estimated cost of attendance based on prices for current academic year 2020-2021

Study length	Tuition	Accommodation	Books and fees	Airport pick up**	Insurance	Total
<b>Academic programmes</b>						
<b>International Foundation (2 term)</b>	£18,415	£4,255-£4,945	£370	£40-£335	£196	<b>£23,236-£23,926</b>
<b>International Foundation (3 term)</b>	£20,495	£6,290-£8,170	£370-£770	£40-£335	£357	<b>£27,512-£29,792</b>
<b>International Foundation (4 term)</b>	£22,995	£8,880-£10,750	£455-£855	£40-£335	£466	<b>£32,796-£35,066</b>
<b>International Year One (3 term)</b>	£20,495	£6,290-£8,170	£370-£770	£40-£335	£357	<b>£27,512-£29,792</b>
<b>Graduate Diploma (3 term)</b>	£20,495	£6,290-£8,170	£370	£40-£335	£357	<b>£27,512-£29,392</b>
<b>English language courses</b>						
<b>1 term*</b>	£4,895	£2,035-£2,365	£80	£40-£335	£122	<b>£7,172-£7,797</b>
<b>16 weeks</b>	£7,830	£3,305-£3,845	£120	£40-£335	£145	<b>£11,440-£12,275</b>

## Start months and term dates

Academic programmes		Academic English		Pre-sessional English	
<b>June (4 term)</b>	Mon 21 Jun 2021-Fri 03 Jun 2022	<b>August (16 weeks)</b>	Mon 09 Aug 2021-Fri 10 Dec 2021	<b>June (10 weeks)</b>	Mon 21 Jun 2021-Fri 27 Aug 2021
<b>September (3 term)</b>	Mon 13 Sep 2021-Fri 10 Jun 2022	<b>September (1 term)</b>	Mon 27 Sep 2021-Fri 10 Dec 2021	<b>July (6 weeks)</b>	Mon 19 Jul 2021-Fri 27 Aug 2021
<b>September (4 term)</b>	Mon 27 Sep 2021-Fri 26 Aug 2022	<b>January (1 term)</b>	Mon 10 Jan 2022-Fri 25 Mar 2022		
<b>January (3 term)</b>	Mon 10 Jan 2022-Fri 26 Aug 2022	<b>April (1 term)</b>	Mon 04 Apr 2022-Fri 17 Jun 2022		
<b>March (2 term)</b>	Mon 28 Mar 2022-Fri 26 Aug 2022	<b>June (1 term)</b>	Mon 27 Jun 2022-Fri 09 Sep 2022		

Prices shown are for the current academic year of 01 September 2020 - 31 August 2021 and for indicative purposes only. All students who confirm their offer on or before 31 January 2021 will pay the 2020/2021 price as per their existing offer letter. After 31 January 2021, where tuition fees have increased, all current offers will be reissued and students will receive a new offer with the new 2021/2022 pricing. For full details of term dates, please visit the relevant course page at [www.intostudy.com/exeter/courses](http://www.intostudy.com/exeter/courses)

\* The price will depend on your start date and length of study. Prices shown are only for one term.  
Vacation weeks in between terms are extra and will be charged at the weekly accommodation price.

\*\* Please note airport pickup is optional and is not included in the total.



### Apply via your local INTO educational counsellor

If you would like us to put you in contact with one of our counsellors, please contact us.



### Apply online

Complete our online application form: [apply.intostudy.com](http://apply.intostudy.com)



### Need some help with your tuition fees?

Check to see if you're eligible for a scholarship: [www.intostudy.com/exeter/scholarships](http://www.intostudy.com/exeter/scholarships)

## Discover more online

For students:  
[www.intostudy.com/exeter](http://www.intostudy.com/exeter)  
For education counsellors:  
[partnerportal.intoglobal.com/exeter](http://partnerportal.intoglobal.com/exeter)

## Connect with us



## Contact us

Enquiries and applications:  
[ukes@intoglobal.com](mailto:ukes@intoglobal.com)  
or +44 1273 876040

Visit the Centre:  
[into@exeter.ac.uk](mailto:into@exeter.ac.uk)  
or +44 1392 724282

Centre address details:  
INTO University of Exeter  
University of Exeter  
INTO Building  
Stocker Road  
Exeter  
EX4 4PY  
United Kingdom



Through innovative partnerships with leading universities, we expand opportunities for higher education, ensuring success and transforming the lives of our students and staff.

## INTO GIVING

Working across the globe, INTO Giving supports projects that increase access to education and improve the quality of teaching and learning. For more information visit [www.into-giving.com](http://www.into-giving.com)

Education counsellor's stamp

