

INTO 



2020-21
University *pathways*
for international students





50+
accreditations

from professional bodies to help boost your employability



STRONG
industry links

to help you make connections for the future



PLACEMENT
opportunities

offered on 72% of undergraduate degrees



CITY CENTRE
campus

location to keep you close and connected to industry

Engage with *the world*

Welcome to INTO Glasgow Caledonian University - your pathway to a degree from Glasgow Caledonian University (GCU). *We give international students like you the opportunity to study at a university in one of the UK's most affordable student cities**.

At INTO Glasgow Caledonian University (INTO GCU), you will study a specialist programme designed exclusively for international students and tailored to the requirements of the University. You will complete your course at our Study Centre in the heart of GCU's compact city centre campus, where you will become part of the University community from the day you arrive.

Choosing to study abroad is a big decision, but at INTO GCU, we'll give you everything you need to succeed at university and beyond.

Choose #INTOGCU and open up a lifetime of opportunities.



3rd
in the UK and 1st in Scotland for Optometry and Orthoptics**

6th
in the UK and 2nd in Scotland for Medical Technology**

11th
in the UK and 2nd in Scotland for Physiotherapy†

EPAS
accredited by the European Foundation for Management Development

Top 20
in the UK and top 5 in Scotland for Building†

Top 20
in the UK and 3rd in Scotland for Town and Country Planning and Landscape Design**

Top 25
in the UK and 3rd in Scotland for General Engineering**

BCS
accredited by the Chartered Institute for IT

* Whatuni 'Most Affordable Student Cities in the UK' 2019

** The Complete University Guide 2020

† The Times and The Sunday Times Good University Guide 2019

Focusing on *your* career goals

GCU is an institution immersed in industry and the professions. With a wealth of contemporary, career-focused programmes and facilities designed to develop your skills and meet your future career goals, GCU bridges the gap between learning in a classroom and receiving valuable industry experience. *GCU students engage with their education – will you join them?*

Specialist degrees

GCU has a unique and contemporary degree offering. Focusing on your ultimate career prospects right from the start, many degrees are among a few of their kind in the world, such as:

- Advanced Internetwork Engineering
- Luxury Brand Management

You will find degrees that delve into the specifics of a subject that you are interested in, so you will grow to become a specialist in your field.

Work placements

There are great opportunities to take a placement or interact with industry-leading companies throughout your degree programme, no matter the subject area you choose to study.

Nadine from The Gambia progressed from INTO GCU to study at GCU. During her degree programme, she was given the opportunity to take a work placement with aeronautics company, Airbus, in Germany, working within the Space Systems department that develops new technologies.



"Studying abroad showed me that I can function in different work environments and that's important for getting a job – employers want you to be adaptable and solve problems in different scenarios."

Nadine, The Gambia

2015 Completed an International Foundation at INTO GCU and progressed to GCU

2017 Started a work placement with Airbus in Germany

2019 Graduated with BEng (Hons) Computer-Aided Mechanical Engineering from GCU

"Our effective and flexible learning and teaching boasts excellent links with the professions, and we have invested £32 million into our city centre campus to provide an even more stimulating learning environment for our students."

Professor Pamela Gillies CBE FRSE

Principal and Vice-Chancellor,
Glasgow Caledonian University



Accredited programmes

GCU has a huge portfolio of programme accreditations from professional bodies across a wide variety of subject areas, including:

- Institution of Mechanical Engineers
- Institution of Engineering and Technology
- Institute of Measurement and Control
- EPAS accreditation by the European Foundation for Management Development
- Chartered Institute of Marketing
- Chartered Institute of Personnel and Development
- Chartered Institute for Securities and Investment
- Chartered Insurance Institute
- BCS accredited by the Chartered Institute for IT

Innovative facilities

Designed to help you gain the skills that employers want, GCU has a modern learning environment filled with cutting-edge facilities. Depending on your chosen degree, the facilities you could have access to include:

- **Physiotherapy@GCUclinic** – a specialist healthcare service on campus for students to learn to assess injuries and treat conditions
- **Networking Labs** – six dedicated labs with 30+ CCNA Security and CCNP pods populated with a variety of high specification devices
- **Interprofessional Simulation Centre** – simulated home and hospital environments and high fidelity recording equipment to create scenarios that can be filmed
- **GCU Vision Centre** – a functioning opticians service with specialist services including low vision and colour assessments, and more
- **Game Design Studio** – 3D Laser Scanning and Motion Capture tools, a Rapid Prototyping machine, 3D Animation and Virtual Reality labs

Campus life at GCU

The fantastic city campus location and £32 million investment in buildings and facilities combine to create a top learning environment. *You will have a truly memorable experience at GCU.*

100%
satisfaction
for campus
environment

(INTO Annual Student
Experience Survey 2019)

99%
student
satisfaction
for support

(INTO Annual Student
Experience Survey 2019)

Your INTO Study Centre

The INTO Centre is right at the heart of campus, just a few minutes' walk away from the library, sports centre and Students' Association building.

As soon as you walk into the INTO Centre, you will notice a friendly and welcoming atmosphere. Whether it's a game of pool, table tennis, air hockey or PlayStation, there is always something going on here.

INTO GCU aims to integrate international students into the GCU community as much as possible, so the INTO Centre shares building space with other University facilities.

You will find the Real Learning Café on the ground floor, where you can use computers and buy a coffee. Head to the Saltire Centre to access a five-floor library set among aerial walkways and quiet study zones, or go to the 24/7 computer lab to work on assignments.

Eco-friendly campus

GCU is a university that leads the way in environmental sustainability. You will find a lot of green outdoor spaces contrasting its modern buildings, ensuring that you have spaces to study in a calm and peaceful environment.

The University has won many awards celebrating its positive social and environmental outlook, including EcoCampus Platinum. GCU was the first university in Scotland to achieve this certification for its environmental practices and awarded the highest level that an institution can receive!

Top 50

universities worldwide
for University Impact

(Times Higher Education University
Impact Rankings 2019)

"The INTO Centre has great facilities for studying and making new friends, and the teachers are very friendly, helpful and supportive in every way. INTO GCU has put me on the right track to achieve the best grades I can."

Atallah, Algeria

2018 Started an International Foundation at INTO GCU

2019 Intending to progress to BEng (Hons) Mechanical Electronic Systems Engineering at GCU upon successful completion of pathway programme

"INTO GCU taught me how to be independent, confident and reach out to people. Everyone is very supportive. The transition to GCU was really easy - I really like the University's facilities and services, especially the Learning Development Centre. If you are looking for a quality education and a good experience, don't hesitate!"

Anis, Malaysia

2016 Started an International Foundation at INTO GCU

2017 Progressed to BSc (Hons) Biomedical Science at GCU



Student social life

There is more to campus life than just studying. You will take part in an orientation programme in your first week, and can also stay busy with:

- day trips and excursions
- 95 societies and sports clubs
- Re:Union Bar & Grill for food, social events and activities
- opportunity to volunteer at the student radio station or magazine

We're here to support you

Our Student Services team will help you settle into Glasgow as soon as you arrive here. You will benefit from:

- help with opening a bank account and registering with a local doctor
- help with renewing your visa
- counselling services
- extra support for students under 18
- 24-hour telephone helpline for out-of-hours questions
- career advice at the GCU Careers Service and study skills workshops at the Learning Development Centre when you progress to GCU



Feel at home in Glasgow

Glasgow is the largest city in Scotland and one of the UK's major cities for commerce, education and arts. This thriving city offers limitless opportunities for students, a low living cost *and a safe and welcoming community.*

Dynamic hub of technology

GCU's campus is situated in the heart of the city, surrounded by international businesses that lead the way using the latest technologies. Scotland is the future of commerce, home to some of the largest global financial services outside of London, including:

- J.P. Morgan
- Ernst and Young
- HSBC

'People Make Glasgow'

The city's slogan emphasises what Glasgow is all about - its people. Voted one of the top 10 best cities in the world* and one of the top five safest cities in the UK**, you will have a warm welcome here. 'People Make Glasgow' home - and its international citizens play a big part of that.

* TimeOut 'The 48 Best Cities in the World' 2019
** The Complete University Guide 2017

100%

student satisfaction for the local area

(INTO Annual Student Experience Survey 2019)

Your home from home

With a choice of accommodation options close to campus, *it will be easy for you to find the perfect place to call home.*



- 5 MIN Walk to INTO Centre
- Laundry facilities
- Wi-Fi
- En suite bathroom
- Shared kitchen

Liberty Park

Most INTO GCU students choose to stay at Liberty Park. These modern flats are located at the heart of the city centre and are just a 5-minute walk from the INTO Centre.

You will have your own private room with an en suite bathroom that you will be responsible for keeping clean, and share a large communal kitchen and living area with a TV and sofa.

Caledonian Court

Set in landscaped grounds across the road from the University buildings, Caledonian Court provides safe, friendly and well-equipped accommodation for 660 students.

- 4 MIN Walk to INTO Centre
- Laundry facilities
- Wi-Fi
- En suite bathroom

INTO Glasgow Caledonian University aims to provide the accommodation requested. However, there may be occasions when INTO Glasgow Caledonian University is unable to provide the requested accommodation and reserves the right to offer an alternative type of accommodation instead. The price for any alternative accommodation may differ and will be confirmed to students at the time of their offer.



"Living at Liberty Park has been a wonderful experience. I feel very safe because every entrance has a security device, and there is a fantastic atmosphere to socialise in the common room. Sharing food and learning about my flatmates has created a family bond. It has become my home from home."

Frances, Nigeria

2018 Started a Graduate Diploma in Computing at INTO GCU

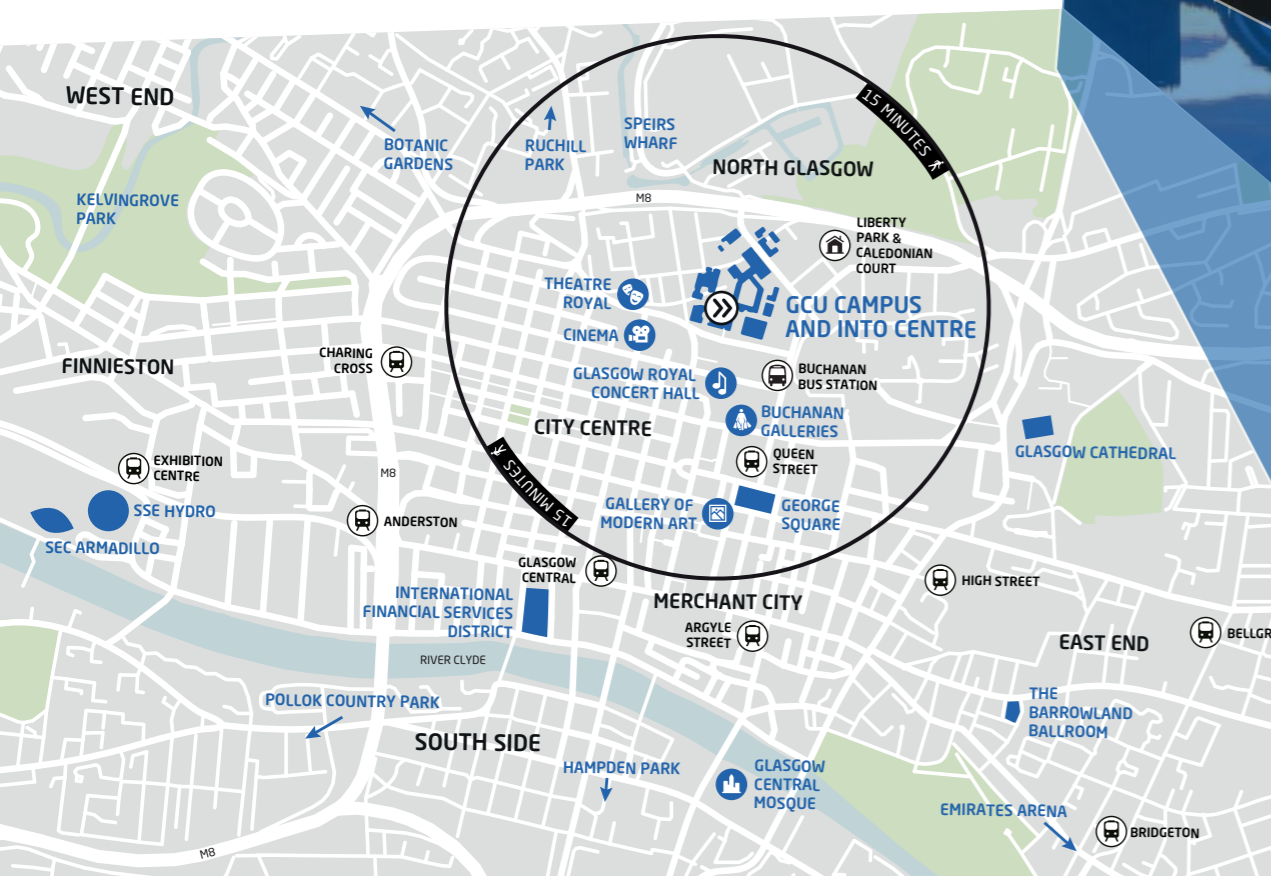
2019 Intending to progress to MSc Big Data Technologies upon successful completion of pathway programme

Supporting you

In the Liberty Park residence, staff are available 24/7 to offer support and we will also provide you with a 24-hour helpline telephone number.

If you are under the age of 18, we will check your attendance at the INTO Centre daily.

If you are not staying at Liberty Park, we will ask that you have a guardian over the age of 21 who will help to look out for your welfare.



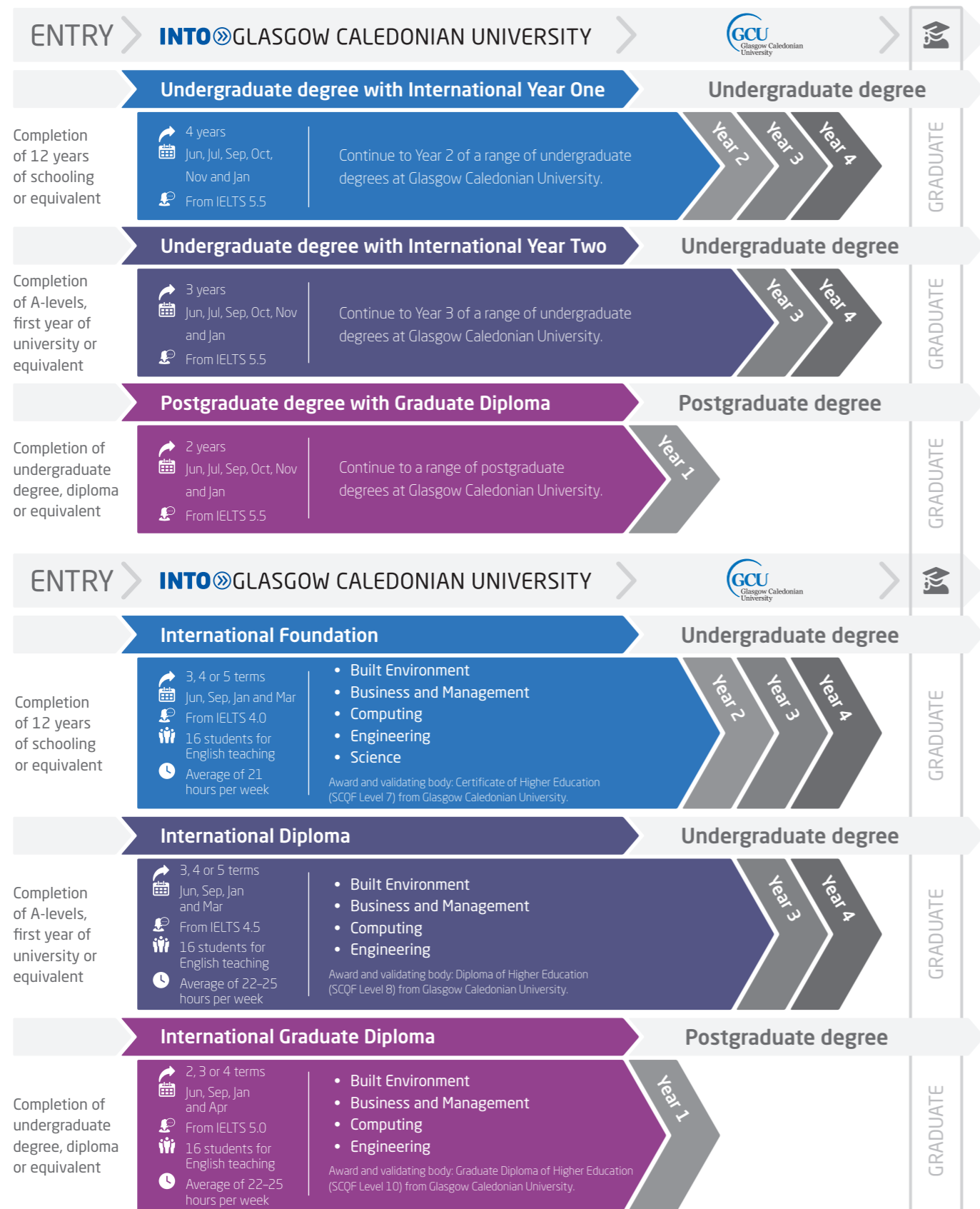
99%

student satisfaction for feeling safe and secure

(INTO Annual Student Experience Survey 2019)

Choosing your course

Our combined academic preparation and degree programmes, designed in partnership with Glasgow Caledonian University, allow an easy transition between your preparatory studies and degree. Alternatively, you can prepare for a degree programme at GCU with one of our tailored academic pathway programmes.



Please note that course length and start month options may vary depending on the pathway chosen. Please visit www.intostudy.com/gcu/courses for full information.

Undergraduate degree with International Year One - IYO

- > Combine your preparation year with your undergraduate degree in one programme, requiring a single CAS for the duration of your studies.
- > Develop your understanding of academic subjects related to your degree programme as you improve your English language and study skills.
- > Benefit from knowing that you will continue directly to Year 2 of your degree programme, provided you meet the requirements after the first year of your study plan.

Year 1 of study plan

You will need to earn 140 credits if you are studying a science degree programme, and 120 credits for all other degree programmes, to complete the first year of your study plan.

Core modules:

English Language for Academic Purposes and Study Skills (20 credits)

Specialist modules:

You will also take compulsory specialist modules related to your degree programme. Depending on your area of study, they could include:

Building Performance; Cells and Biomolecules; Chemistry; Construction Technology; Database Development; Electrical Principles and Circuit Theory; Fundamentals in Financial Management; Fundamentals of Software Engineering; Mechanical Principles; Principles of Marketing.

Undergraduate degree with International Year Two - IYT

- > Combine your preparation year with your undergraduate degree in one programme, requiring a single CAS for the duration of your studies.
- > Develop your understanding of academic subjects related to your degree programme as you improve your English language and study skills.
- > Benefit from knowing that you will continue directly to Year 3 of your degree programme, provided you meet the requirements after the first year of your study plan.

Year 1 of study plan

You will need to earn 120 credits from your module options to complete the first year of your study plan.

Core modules:

English Language for Academic Purposes and Study Skills (20 credits)

Specialist modules:

You will also take compulsory specialist modules related to your degree programme. Depending on your area of study, they could include:

Contemporary Cultural Challenges in International Business; Construction Technology; Database Development; Electrical Systems; Game Programming; Urban Planning.

Degree options:

A range of undergraduate degrees are available at GCU - here are some of the most popular:

Biomedical Science BSc (Hons) (IYO)	Electrical Power Engineering BEng (Hons)
Building Surveying BSc (Hons)	Fire Risk Engineering BEng (Hons)
Business Management BA (Hons)	Forensic Investigation BSc (Hons)
Construction Management BSc (Hons)	International Business BA (Hons)
Cyber Security and Networks BSc (Hons) (IYT)	Optometry BSc (Hons) (IYO)

Combine preparation study with an undergraduate degree at GCU

Year 1 of study plan

Start date

4 years: Sep or Jan
 4 years with Standard Pre-session English: Jun or Oct
 4 years with Intensive Pre-session English: Jul or Nov

English language entry requirements*

4 years: IELTS 5.5 (with a minimum of 5.5 in all subskills) or equivalent.
 4 years with Standard Pre-session English: IELTS 5.0 (with a 5.0 in all subskills) or equivalent.
 4 years with Intensive Pre-session English: IELTS 4.5 (with 4.5 in all subskills) or equivalent.

Age requirement

16 years and above**

* If you do not meet the minimum English language requirements, you may qualify for our International Foundation (page 13).
 ** All students commencing courses for the September start date must be 16 years old by 01 September of that calendar year.

Combine preparation study with an undergraduate degree at GCU

Year 1 of study plan

Start date

3 years: Sep or Jan
 3 years with Standard Pre-session English: Jun or Oct
 3 years with Intensive Pre-session English: Jul or Nov

English language entry requirements*

3 years: IELTS 5.5 (with a minimum of 5.5 in all subskills) or equivalent.
 3 years with Standard Pre-session English: IELTS 5.0 (with 5.0 in all subskills) or equivalent.
 3 years with Intensive Pre-session English: IELTS 4.5 (with 4.5 in all subskills) or equivalent.

Age requirement

16 years and above**

* If you do not meet the minimum English language requirements, you may qualify for our International Diploma (page 14).
 ** All students commencing courses for the September start date must be 16 years old by 01 September of that calendar year.

Combine preparation study with a postgraduate degree at GCU

Year 1 of study plan

Start date

2 years: Sep or Jan
2 years with Standard Pre-session English: Jun or Oct
2 years with Intensive Pre-session English: Jul or Nov

English language entry requirements*

2 years: IELTS 5.5 (with a minimum of 5.5 in all subskills) or equivalent.
2 years with Standard Pre-session English: IELTS 5.0 (with 5.0 in all subskills) or equivalent.
2 years with Intensive Pre-session English: IELTS 4.5 (with 4.5 in all subskills) or equivalent.

Age requirement

21 years and above

* If you do not meet the minimum English language requirements, you may qualify for our International Graduate Diploma (page 15).

Postgraduate degree with Graduate Diploma - PGD

- › Combine your preparation year with your postgraduate degree in one programme, requiring a single CAS for the duration of your studies.
- › Develop your understanding of academic subjects related to your degree as you improve your English language, study and research skills.
- › Benefit from knowing that you will continue directly to your postgraduate degree, provided you meet the requirements after the first year of your study plan.

Year 1 of study plan

You will need to earn 120 credits from your module options to complete the first year of your study programme.

Core modules:

English for Postgraduate Academic Studies (20 credits)

Specialist modules:

You will also take compulsory specialist modules related to your degree programme. Depending on your area of study, they could include:
Advanced Structural Engineering; Building Performance and Energy Assessment; Changing Perspectives in International Marketing; Cloud System Computing; Computer-Aided Design; International Business Strategy.

Pre-Master's - PM

- › Combine one term (3 months) of preparation for study with your postgraduate degree in one programme, requiring a single CAS for the duration of your studies.
- › Develop your knowledge of and ability to conduct your own research as you improve your English language abilities and enhance your study skills.
- › Benefit from knowing that you will continue directly to your postgraduate degree, provided you meet the requirements after the first year of your study plan.

Term 1 of study plan

During the first term of your study plan, you will study three core modules:

Academic Study Skills for Postgraduate Study
English Language for Academic Purposes
Independent Research Project

Degree options:

A range of postgraduate degrees are available at GCU - here are some of the most popular:

Advanced Internetwork Engineering MSc	Fashion Business Creation MSc
Applied Instrumentation and Control MSc	International Banking, Finance and Risk Management MSc
Big Data Technologies MSc	International Business Management MSc
Electrical and Electronic Engineering MSc	International Fashion Marketing MSc
Environmental Management (Waste, Energy, Water, Oil and Gas) MSc	Luxury Brand Management MBA

International Foundation

Built Environment - FBE

You will need to earn 120 credits from the following modules:

Building Performance (20 credits)	English Language for Academic Purposes and Study Skills (20 credits)
Construction Measurement and Cost (20 credits)	Foundation Mathematics (20 credits)
Construction Technology (20 credits)	Valuation of Property 1 (20 credits)

Progress to 5 degrees. Find out more online at www.intostudy.com/gcu/FBE

Business and Management - FBM

You will need to earn 120 credits from the following modules:

Core modules:

English Language for Academic Purposes and Study Skills (20 credits)
Enterprising Behaviours for the Business Professional (20 credits)
Fundamentals in Financial Management (20 credits)

Core modules:

International Economic Issues and Challenges (20 credits)
Principles of Marketing (20 credits)

Specialist modules:

Essentials of Managing Human Resources (20 credits) or Marketing Design and Creativity (20 credits)

Progress to 4 degrees. Find out more online at www.intostudy.com/gcu/FBM

Computing - FCO

You will need to earn 120 credits from the following modules:

Core modules:

Database Development (20 credits)
English Language for Academic Purposes and Study Skills (20 credits)
Fundamentals of Computing Systems (10 credits)
Fundamentals of Software Engineering (20 credits)

Core modules:

Introduction to Computer Networks (20 credits)
Mathematics for Computing (20 credits)

Specialist modules:

Fundamentals of Network and Cloud Computing (10 credits) or Security Landscape (10 credits)

Progress to 2 degrees. Find out more online at www.intostudy.com/gcu/FCO

Engineering - FEN

You will need to earn 120 credits from the following modules:

Electrical Principles and Circuit Theory (20 credits)	Foundation Mathematics (20 credits)
Engineering Materials (10 credits)	Mathematics for Technology (20 credits)
English Language for Academic Purposes and Study Skills (20 credits)	Mechanical Principles (20 credits)
	Principles of Programmable Systems (10 credits)

Progress to 5 degrees. Find out more online at www.intostudy.com/gcu/FEN

Science - FSC

You will need to earn 140 credits from the following modules:

Cells and Biomolecules (20 credits)	English Language for Academic Purposes and Study Skills (20 credits)
Chemistry (20 credits)	Physiology 1 (20 credits)
Core Skills in Biosciences 1 (40 credits)	Physiology 2 (20 credits)

Progress to 15 degrees. Find out more online at www.intostudy.com/gcu/FSC

Progress to Year 2 of an undergraduate degree at GCU

Start date

3 term: Sep or Jan
4 term: Jun or Sep
5 term: Jun or Mar

English language entry requirements*

3 term: IELTS 5.0 (with a minimum of 4.5 in writing) or equivalent.

Students intending to progress to Biomedical Science, Optometry or Orthoptics:
3 term: IELTS 5.5 (with 5.0 in writing) or equivalent.

4 term: IELTS 4.5 or equivalent.

5 term: IELTS 4.0 or equivalent.

Age requirement

16 years and above**

* If you do not meet the minimum English language requirements, you may qualify for our Academic English course (page 18).

** All students commencing courses for the September start date must be 16 years old by 01 September of that calendar year.

Prepare to progress to an undergraduate degree at GCU.

EPAS accredited

GCU's Business Programme Set is accredited by the European Foundation for Management Development

21 professional accreditations

at the School of Computing, Engineering and Built Environment

Unique degrees

at the School of Health and Life Sciences like Optometry - the only one of its kind in Scotland

Progress to Year 3 of an undergraduate degree at GCU

Start date

3 term: Sep

English language entry requirements*

3 term: IELTS 5.5 (with a minimum of 5.0 in writing) or equivalent.

Age requirement

16 years and above**

Start date

3 term: Sep or Jan
4 term: Jun or Sep
5 term: Jun or Mar

English language entry requirements*

3 term: IELTS 5.5 (with a minimum of 5.0 in writing) or equivalent.

4 term: IELTS 5.0 (with a minimum of 4.5 in writing) or equivalent.

5 term: IELTS 4.5 (with a minimum of 4.0 in writing) or equivalent.

Age requirement

16 years and above**

Start date

3 term: Sep

English language entry requirements*

3 term: IELTS 5.5 (with a minimum of 5.0 in writing) or equivalent.

Age requirement

16 years and above**

Start date

3 term: Sep

English language entry requirements*

3 term: IELTS 5.5 (with a minimum of 5.0 in writing) or equivalent.

Age requirement

16 years and above**

* If you do not meet the minimum English language requirements, you may qualify for our Academic English course (page 18).

** All students commencing courses for the September start date must be 16 years old by 01 September of that calendar year.

International Diploma

Built Environment - DBE

What will I study?

You will need to earn 120 credits from a range of module options to complete your pathway.

Core module:

English Language for Academic Purposes and Study Skills (EAP) (20 credits)

Example specialist modules include:

Construction Technology (20 credits)
Urban Planning (20 credits)

Progress to **5** degrees. Find out more online at www.intostudy.com/gcu/DBE

Business and Management - DBM

What will I study?

You will need to earn 120 credits from a range of module options to complete your pathway.

Core modules:

Contemporary Cultural Challenges in International Business (20 credits)
English Language for Academic Purposes and Study Skills (EAP) (20 credits)
Essentials of Managing Human Resources (20 credits)

Core modules:

Financial Management for Decision Makers (20 credits)
Society, Employability and Business (20 credits)

Specialist modules:

International Institutions and Environments (20 credits) **or** Management, Issues and Concepts (20 credits)

Progress to **2** degrees. Find out more online at www.intostudy.com/gcu/DBM

Computing - DCO

What will I study?

You will need to earn 120 credits from a range of module options to complete your pathway.

Core module:

English Language for Academic Purposes and Study Skills (EAP) (20 credits)

Example specialist modules include:

Game Programming (20 credits)
Human Computer Interaction (20 credits)

Progress to **6** degrees. Find out more online at www.intostudy.com/gcu/DCO

Engineering - DEN

What will I study?

You will need to earn 120 credits from a range of module options to complete your pathway.

Core module:

English Language for Academic Purposes and Study Skills (EAP) (20 credits)

Example specialist modules include:

Database Development (20 credits)
Electrical Systems (20 credits)

Progress to **8** degrees. Find out more online at www.intostudy.com/gcu/DEN

International Graduate Diploma

Built Environment - GDBE

What will I study?

You will need to earn 120 credits from a range of module options to complete your pathway.

Core module:

English for Postgraduate Academic Studies (20 credits)

Example specialist modules include:

Advanced Structural Engineering (20 credits)
Building Performance and Energy Assessment (20 credits)

Progress to **3** degrees. Find out more online at www.intostudy.com/gcu/GDBE

Business and Management - GDBM

What will I study?

You will need to earn 120 credits from a range of module options to complete your pathway.

Core modules:

Business Research Methods and Skills (20 credits)
Changing Perspectives in International Marketing (20 credits)
Corporate Finance and Investment (20 credits)

English for Postgraduate Academic Studies (20 credits)
International Business Strategy (20 credits)
Leading Organisations in a Changing Global Context (20 credits)

Progress to **18** degrees. Find out more online at www.intostudy.com/gcu/GDBM

Progression options are also available at the GCU London campus. Top progression degrees here include MSc Fashion Business Creation and MSc Luxury Brand Management. Find out more: gculondon.ac.uk

Computing - GDC

What will I study?

You will need to earn 120 credits from a range of module options to complete your pathway.

Core module:

English for Postgraduate Academic Studies (20 credits)

Example specialist modules include:

Cloud System Computing (20 credits)
Network Penetration and Ethical Hacking (20 credits)

Progress to **3** degrees. Find out more online at www.intostudy.com/gcu/GDC

Engineering - GDE

What will I study?

You will need to earn 120 credits from a range of module options to complete your pathway.

Core module:

English for Postgraduate Academic Studies (20 credits)

Example specialist modules include:

Computer Aided Design (20 credits)
Engineering Design and Analysis (20 credits)

Progress to **7** degrees. Find out more online at www.intostudy.com/gcu/GDE

Progress to a postgraduate degree at GCU

Start date

3 term: Sep

English language entry requirements*

3 term: IELTS 5.5 (with a minimum of 5.5 in all subskills) or equivalent.

Age requirement

21 years and above

Start date

2 term: Apr
3 term: Sep or Jan
4 term: Jun or Sep

English language entry requirements*

2 term: IELTS 5.5 (with a minimum of 5.5 in all subskills) or equivalent.

3 term: IELTS 5.0 (with a minimum of 5.0 in two subskills) or equivalent.

4 term: IELTS 4.5 (with a minimum of 4.5 in two subskills) or equivalent.

Age requirement

21 years and above

Start date

3 term: Sep

English language entry requirements*

3 term: IELTS 5.5 (with a minimum of 5.5 in all subskills) or equivalent.

Age requirement

21 years and above

Start date

3 term: Sep

English language entry requirements*

3 term: IELTS 5.5 (with a minimum of 5.5 in all subskills) or equivalent.

Age requirement

21 years and above

* If you do not meet the minimum English language requirements, you may qualify for our Academic English course (page 18).

Progression degree overview table

There are more than 70 progression degree options at Glasgow Caledonian University. You can progress to any of these from one of our INTO GCU programmes. Below is a selection of some of the most popular. See pages 10-15 for more details. Find comprehensive information on all academic programmes, degree options and progression requirements at: www.intostudy.com/gcu/courses

Undergraduate

Degree	IF	ID	IYO*	IYT*	Pathway	Specific module requirements	English level	Final grade
Applied Psychology BSc (Hons)	•				FSC	All core modules must be successfully completed. Places on this programme are limited and not guaranteed. Applicants should expect high levels of competition and consider a range of alternative progression routes.	6.0 with 5.5 in subskills	40%
Audio Technology BSc (Hons)		•	•		DEN	Sound Production 2; Sound Reinforcement; Analogue and Digital Electronics; Signals and Electronic Systems; Mathematics 2 A/B; Integrated Audio Studies 2; EAP.	6.0 with 5.5 in subskills	40%
Biomedical Science BSc (Hons)	•		•		FSC	All core modules must be successfully completed.	7.0 with 6.5 in subskills	40%
Building Surveying BSc (Hons)	•	•	•	•	FBE or DBE	FBE: All core modules must be successfully completed. DBE: Building Performance; Construction Process Management & Safety; Design & Regulation (including intermediate CAD); Construction Cost Studies; EAP.	6.0 with 5.5 in subskills	40%
Business Management BA (Hons)	•	•	•	•	FBM or DBM	FBM: All core modules must be successfully completed. DBM: You must pass one specialist and all core modules.	6.0 with 5.5 in subskills	40%
Cell and Molecular Biology BSc (Hons)	•		•		FSC	All core modules must be successfully completed.	6.0 with 5.5 in subskills	40%
Computer-Aided Mechanical Engineering BEng (Hons)	•	•	•	•	FEN or DEN	FEN: All core modules must be successfully completed. DEN: Thermodynamics & Fluid Mechanics; Engineering Design & Analysis; Mathematics; Integrated Engineering Studies, Control & Instrumentation Systems; Manufacture & Materials; Electrical Systems; EAP.	6.0 with 5.5 in subskills	40%
Computer Games (Art and Animation) BSc (Hons)		•	•		DCO	Games Design 1; Introduction to Games Programming; 3D Modelling & Digital Sculpting; Introduction to 3D Animation; Human Computer Interaction; Integrated Project 2; EAP.	6.0 with 5.5 in subskills	40%
Computer Games (Design) BSc (Hons)		•	•		DCO	Game Programming 1; Game Design 1; 3D Modeling & Digital Sculpting or Drawing for Design; Game Content Design; Human Computer Interaction; EAP.	6.0 with 5.5 in subskills	40%
Computer Games (Software Development) BSc (Hons)		•	•		DCO	Games Programming 1; Game Design 1; 3D Maths for Simulation & Visualisation; Working with Games Engines; Human Computer Interaction; EAP.	6.0 with 5.5 in subskills	40%
Computer Networking BEng (Hons)	•		•		FCO	Students must pass one specialist and all core modules.	6.0 with 5.5 in subskills	40%
Computing BSc (Hons)	•	•	•	•	FCO or DCO	FCO: Pass in one specialist and all core modules. DCO: EAP; Programming 2; Object Oriented Analysis & Design; Human Computer Interaction; Data Structures & Algorithm; Web Application Development 1; Project 2.	6.0 with 5.5 in subskills	40%
Construction Management BSc (Hons)	•	•	•	•	FBE or DBE	FBE: All core modules must be successfully completed. DBE: Core Construction Management Skills and EAP.	6.0 with 5.5 in subskills	40%
Cyber Security and Networks BSc (Hons)		•	•		DCO	Secure Systems Administration; Computer Networking 2; Programming 2; Integrated Design Project 2; Database Development; Cyber Security Operations; EAP.	6.0 with 5.5 in subskills	40%
Digital Security and Forensics BEng (Hons)		•	•		DCO	Secure Systems Administration; Computer Networking 2; Programming 2; Integrated Design Project 2; Database Development; Cyber Security Operations; EAP.	6.0 with 5.5 in subskills	40%
Electrical and Electronic Engineering BEng (Hons)	•	•	•	•	FEN or DEN	FEN: All core modules must be successfully completed. DEN: EAP and core elements covering: Electrical Principles; Analogue & Digital Electronics; Mathematics; Software Development; Mechanical Principles; Electrical Systems.	6.0 with 5.5 in subskills	40%
Electrical Power Engineering BEng (Hons)	•	•	•	•	FEN or DEN	FEN: All core modules must be successfully completed. DEN: Management Responsibilities of a Professional Engineer; Mathematics; Thermodynamics; Energy Resources; Generation & Utilisation; Electrical Systems; Instrumentation & Control Systems; EAP.	6.0 with 5.5 in subskills	40%
Environmental Civil Engineering BSc (Hons)	•	•	•	•	FEN or DEN	FEN: All core modules must be successfully completed. DEN: Principles of Hydraulics; Contracts Management; Structural Design & Geotechnics; EAP.	6.0 with 5.5 in subskills	40%
Environmental Management BSc (Hons)	•	•	•	•	FBE or DBE	FBE: All core modules must be successfully completed. DBE: Environmental Policy & Regulation; Society, Politics and Sustainability; Environmental Science & Measurement; Environmental Assessment; Urban Planning; GIS; EAP.	6.0 with 5.5 in subskills	40%
Fire Risk Engineering BEng (Hons)	•	•	•	•	FEN or DEN	FEN: All core modules must be successfully completed. DEN: Fire Safety Analysis & Practice of Fire Safety Design & Regulation; Computer-Aided Modelling Techniques; Risk Management; Introduction to Maths and Structure; EAP.	6.0 with 5.5 in subskills	40%
Food Biosciences BSc (Hons)	•		•		FSC	All core modules must be successfully completed.	6.0 with 5.5 in subskills	40%
Forensic Investigation BSc (Hons)	•	•	•	•	FSC or DEN	FSC: All core modules must be successfully completed. DEN: Physical Chemistry; Chemical Analysis; Civil & Criminal Procedure; Organic Chemistry 1; Inorganic Chemistry; Cells & Biomolecules; EAP.	6.0 with 5.5 in subskills	40%
International Business BA (Hons)	•	•	•	•	FBM or DBM	FBM: All core modules must be successfully completed. DBM: You must pass one specialist and all core modules.	6.0 with 5.5 in subskills	40%
International Business and Human Resource Management BA (Hons)	•		•		FBM	All core modules must be successfully completed.	6.0 with 5.5 in subskills	40%

Degree	IF	ID	IYO*	IYT*	Pathway	Specific module requirements	English level	Final grade
International Marketing BA (Hons)	•		•		FBM	All core modules must be successfully completed.	6.0 with 5.5 in subskills	40%
Mechanical Systems Engineering BEng (Hons)	•	•	•	•	FEN or DEN	FEN: All core modules must be successfully completed. DEN: Thermodynamics & Fluid Mechanics; Engineering Design & Analysis; Mathematics; Control & Instrumentation Systems; Manufacture & Materials; Electrical Systems; EAP.	6.0 with 5.5 in subskills	40%
Microbiology BSc (Hons)	•		•		FSC	All core modules must be successfully completed.	6.0 with 5.5 in subskills	40%
Nursing Studies BSc (Hons)	•				FSC	All core modules must be successfully completed. Places on this programme are limited and not guaranteed. Applicants should expect high levels of competition and consider a range of alternative progression routes.	7.0 with 7.0 in subskills	50%
Occupational Therapy BSc (Hons)	•				FSC	All core modules must be successfully completed. Places on this programme are limited and not guaranteed. Applicants should expect high levels of competition and consider a range of alternative progression routes.	7.0 with 6.5 in subskills	40%
Optometry BSc (Hons)	•		•		FSC	All core modules must be successfully completed.	7.0 with 6.5 in subskills and 7.0 in speaking	75%
Orthoptics BSc (Hons)	•		•		FSC	All core modules must be successfully completed.	7.0 with 6.5 in subskills and 7.0 in speaking	70%
Pharmacology BSc (Hons)	•		•		FSC	All core modules must be successfully completed.	6.0 with 5.5 in subskills	40%
Physiotherapy BSc (Hons)	•				FSC	All core modules must be successfully completed. Places on this programme are limited and not guaranteed. Applicants should expect high levels of competition and consider a range of alternative progression routes.	7.0 with 6.5 in subskills	60%
Quantity Surveying BSc (Hons)	•	•	•	•	FBE or DBE	FBE: All core modules must be successfully completed. DBE: EAP; Quantity Surveying skills including Contractual & Commercial Knowledge; Quantification & Technology Skills.	6.0 with 5.5 in subskills	40%
Real Estate BSc (Hons)	•	•	•	•	FBE or DBE	FBE: All core modules must be successfully completed. DBE: Advanced Construction Technology; Property Development; Valuation, Construction & Property Contracts; Property Management; Urban Planning; EAP.	6.0 with 5.5 in subskills	40%

Postgraduate

Degree	PM*	GD	PGD*	Pathway	Specific requirements	English level	Final grade
3D Design for Virtual Environments MSc	•	•	•	GDC	Modules will vary based on background and experience.	6.0 with 5.5 in subskills	40%
Accounting and Finance MSc	•	•	•	GDBM	All core modules must be successfully completed.	6.0 with 5.5 in subskills	40%
Advanced Internetwork Engineering MSc	•	•	•	GDC	Modules will vary based on background and experience.	6.0 with 5.5 in subskills	40%
Applied Instrumentation and Control MSc	•	•	•	GDE	Modules will vary based on background and experience.	6.0 with 5.5 in subskills	40%
Big Data Technologies MSc	•	•	•	GDC	Modules will vary based on background and experience.	6.0 with 5.5 in subskills	40%
Building Services Engineering MSc	•	•	•	GDBE	Modules will vary based on background and experience.	6.0 with 5.5 in subskills	40%
Electrical and Electronic Engineering MSc	•	•	•	GDE	Modules will vary based on background and experience.	6.0 with 5.5 in subskills	40%
Environmental Management (Waste, Energy, Water, Oil and Gas) MSc	•	•	•	GDE	Modules will vary based on background and experience.	6.0 with 5.5 in subskills	40%
Fashion and Lifestyle Marketing MSc ■	•	•	•	GDBM	All core modules must be successfully completed.	6.0 with 5.5 in subskills	40%
Fashion Business Creation MSc ■	•	•	•	GDBM	All core modules must be successfully completed.	6.0 with 5.5 in subskills	40%
Global Marketing MSc ■	•	•	•	GDBM	All core modules must be successfully completed.	6.0 with 5.5 in subskills	40%
Global Master of Business Administration MBA ■	•	•	•	GDBM	Successful completion of core modules and an interview.	6.0 with 5.5 in subskills	40%
Human Resource Management MSc	•	•	•	GDBM	All core modules must be successfully completed.	6.0 with 5.5 in subskills	40%
International Banking, Finance and Risk Management MSc	•	•	•	GDBM	All core modules must be successfully completed.	6.0 with 5.5 in subskills	40%
International Business Management MSc	•	•	•	GDBM	All core modules must be successfully completed.	6.0 with 5.5 in subskills	40%
International Fashion Marketing MSc	•	•	•	GDBM	All core modules must be successfully completed.	6.0 with 5.5 in subskills	40%
International Management and Business Development MSc ■	•	•	•	GDBM	All core modules must be successfully completed.	6.0 with 5.5 in subskills	40%
International Operations and Supply Chain Management MSc	•	•	•	GDBM	All core modules must be successfully completed.	6.0 with 5.5 in subskills	40%
International Project Management (Energy, Construction Management, Oil and Gas) MSc	•	•	•	GDE	Modules will vary based on background and experience.	6.0 with 5.5 in subskills	40%
Luxury Brand Management MBA ■	•	•	•	GDBM	All core modules must be successfully completed. Two years of relevant work experience is required.	6.0 with 5.5 in subskills	40%
Luxury Brand Marketing MBA ■	•	•	•	GDBM	All core modules must be successfully completed.	6.0 with 5.5 in subskills	40%
Marketing MSc	•	•	•	GDBM	All core modules must be successfully completed.	6.0 with 5.5 in subskills	40%
Master of Public Health MPH	•					6.5 with 6.0 in subskills	50%
Mechanical Engineering MSc	•	•	•	GDE	Modules will vary based on background and experience.	6.0 with 5.5 in subskills	40%
Mechanical Engineering (with Design or Manufacture) MSc	•	•	•	GDE	Modules will vary based on background and experience.	6.0 with 5.5 in subskills	40%
Multimedia Journalism MA	•	•	•	GDBM	All core modules must be successfully completed. A portfolio and an interview are required.	7.0 with 6.5 in subskills	40%
Quantity Surveying MSc	•	•	•	GDBE	Modules will vary based on background and experience.	6.0 with 5.5 in subskills	40%
Risk Management MSc	•	•	•	GDBM	All core modules must be successfully completed.	6.0 with 5.5 in subskills	40%
Television Fiction Writing MA	•	•	•	GDBM	All core modules must be successfully completed. A portfolio and an interview are required.	7.0 with 6.5 in subskills	40%

Please note: English level and academic progression requirements are correct to the best of our knowledge at the time of going to print. In some circumstances, these may change throughout the year - please visit www.intostudy.com/gcu for the most up-to-date information.

■ This degree is available at the GCU London campus only.

* IYO requirements are the same as the International Foundation; IYT are the same as the International Diploma; PGD and PM are the same as the International Graduate Diploma.

English courses

Improve your English language skills to prepare for further academic study

Start date

Sep, Jan, Apr or Jun

English language entry requirements

From IELTS 3.0

Age requirement

16 years and above

Class size and hours

Maximum of 21 students
30 learning hours per week, with 25 hours of face-to-face contact

EN Academic English



- For students who need to increase their IELTS level in order to progress to university. This intensive course offers rapid progress of up to one IELTS band per term.

Course features

- You will learn through face-to-face teaching and online learning to communicate effectively in English and improve your reading, writing, speaking and listening skills.
- A diverse social programme and effective academic content will help you to develop the fluency and confidence you need to progress to further study.
- Access INTO's interactive online learning platform, MyINTO, outside of class to practise your English language skills, complete tasks and engage with your classmates.
- Developed in partnership with Cambridge English, the world leader in language assessment, INTO English Language Assessment (IELA) provides a standardised online assessment of all four core language skills throughout your studies. The IELA test is available to you as an additional form of assessment and allows you to choose from a wide range of Higher Education institutions.

EN Pre-sessional English

- For students who are academically qualified and hold an offer from Glasgow Caledonian University, but need to improve their English language skills to the level required for their chosen degree.

Course features

- Prepare for your degree by learning English language and study skills tailored to the requirements of university study in a 6 or 10 week course.
- Learn from experienced teachers and alongside students who will be studying the same – or similar – subjects as you at the University.
- Study academic vocabulary related to your degree and learn how to give presentations on areas of academic interest to practise this terminology.
- Get used to living and studying in the UK and adjust to the style, challenges and expectations of the UK higher education system.

Accredited by the
BRITISH COUNCIL
for the teaching
of English in the UK

All our English language courses at Glasgow Caledonian University have received accreditation from the British Council.

Successful INTO alumni

Many INTO GCU students have graduated with an industry-focused degree from GCU and have gone on to start their dream career. Here are some success stories from our INTO GCU alumni.

"My company was born out of my experience in helping with community projects in Africa, so I give a minimum of 10% of profits to projects for sustainable development. GCU gave me the cultural intelligence you need to work with people from different backgrounds. There are so many things I wouldn't have been able to do for my business without support from GCU."

Isatou, The Gambia

2014 Completed an International Foundation in Business and Management at INTO GCU
2015 Co-founded health drink start-up, Hippo & Hedgehog, while studying at GCU
2017 Graduated with BA (Hons) International Business with Risk Management from GCU
Now Awarded the prestigious Royal Society of Edinburgh Enterprise Fellowship, received an endorsement from Sir Richard Branson and is securing retail outlets for Drink Baotic in the UK



"It has been an absolute pleasure to be here and I feel like my journey at GCU has been filled with excitement. It's very difficult to leave your country, but INTO GCU made this environment feel like home. When I progressed to GCU, I explored my environment more. The Careers Service was really helpful and made things clearer for me in terms of what to do next."

Abdullah, Saudi Arabia

2015 Completed an International Foundation in Engineering at INTO GCU
2018 Graduated with BEng (Hons) Electrical Power Engineering from GCU and was named GCU's student of the year
Now Working at the Ministry of Energy, Industry and Minerals in Riyadh, Saudi Arabia

"When I first started at INTO GCU, I was 17 and it was the first time I had ever left my country. My time there prepared me for all my studies – it was the foundation of me growing as a person. It taught me people skills, how to be approachable and how to go for what I want. INTO GCU isn't just an education experience – it's a life experience. A once in a lifetime experience."

Rayana, The Gambia

2010 Completed an International Foundation in Business and Management at INTO GCU
2013 Graduated with BA (Hons) Finance, Investment and Risk from GCU
2014 Graduated with MSc in Finance and Investment from GCU
Now Working for the UN in Geneva, Switzerland



"One of the greatest things about GCU is that it exposed me to employers. Companies came to the campus to talk to us about work experience opportunities, and I got to do an internship with Jaguar Land Rover. It was a great experience because I had the opportunity to work with a company of such great skill, so that exposed me to many things on an industrial level."

Goodness, Nigeria

2013 Completed an International Foundation in Engineering at INTO GCU
2016 Graduated with BEng (Hons) Computer-Aided Mechanical Engineering from GCU, having completed a work placement with Jaguar Land Rover
Now Working as a Manufacturing Quality Engineer at Jaguar Land Rover in the UK

Dates and prices

The cost of your programme may vary depending on factors including the pathway chosen and programme length. The following guide to costs is based on pricing for the current academic year and provides an indication of the cost of attendance for some of our pathways. For specific cost information, please refer online: www.intostudy.com/gcu/courses




Estimated cost of attendance based on prices for current academic year 2019-2020						
Study length	Tuition	Accommodation	Books and fees	Airport pick up	Insurance	Total
Academic programmes*						
International Foundation (3 term)	£13,500	£4,960-£6,080	£345-£745	£60-£145	£357	£19,222-£20,827
International Foundation (4 term)	£17,055	£7,360-£8,480	£405-£805	£60-£145	£466	£25,346-£26,951
International Diploma (3 term)	£13,500	£4,960-£6,080	£345	£60-£145	£357	£19,222-£20,427
International Diploma (4 term)	£17,055	£7,360-£8,480	£405	£60-£145	£466	£25,346-£26,551
International Graduate Diploma (2 term)	£9,000	£3,040	£345	£60-£145	£196	£12,641-£12,726
International Graduate Diploma (3 term)	£13,500	£4,960-£6,080	£345	£60-£145	£357	£19,222-£20,427
Pre-Master's (1 term)	£4,500	£1,920	£240	£60-£145	£122	£6,842-£6,927
English language courses						
1 term**	£3,555	£1,600-£1,760	£240	£60-£145	£122	£5,577-£5,822

Start months and term dates					
Academic programmes		Academic English		Pre-sessional English	
June (4 term)	Mon 22 Jun 2020-Fri 18 Jun 2021	September (1 term)	Tue 29 Sep 2020-Fri 11 Dec 2020	June (10 weeks)	Mon 15 Jun 2020-Fri 04 Sep 2020
September (4 term)	Tue 29 Sep 2020-Fri 20 Aug 2021	January (1 term)	Mon 11 Jan 2021-Fri 26 Mar 2021	June (10 weeks)	Mon 22 Jun 2020-Fri 28 Aug 2020
September (3 term)	Tue 29 Sep 2020-Fri 18 Jun 2021	April (1 term)	Tue 06 Apr 2021-Fri 11 Jun 2021	October (10 weeks)	Mon 12 Oct 2020-Fri 18 Dec 2020
September (1 term)	Tue 29 Sep 2020-Fri 18 Dec 2020	June (1 term)	Mon 21 Jun 2021-Fri 27 Aug 2021	July (6 weeks)	Mon 20 Jul 2020-Fri 28 Aug 2020
January (3 term)	Mon 11 Jan 2021-Fri 20 Aug 2021			November (6 weeks)	Mon 09 Nov 2020-Fri 18 Dec 2020
April (2 term)	Tue 06 Apr 2021-Fri 20 Aug 2021				

Prices shown are for the current academic year of 01 September 2019 – 31 August 2020 and for indicative purposes only. We will confirm all tuition dates and prices for the academic year 2020/2021 on or before 20 January 2020, with the tuition prices being subject to a maximum increase of up to 5% on the prices for the current academic year. For full details of term dates, please visit the relevant course page at www.intostudy.com/gcu/courses

* Prices shown are for our stand-alone university preparation courses only. Prices for year 1 of our courses, which combine a pathway with a degree programme under a single CAS, are the same as the stand-alone prices. Prices for subsequent years are in line with University tuition fees.

** The price will depend on your start date and length of study. Prices shown are only for one term. Vacation weeks in between terms are extra and will be charged at the weekly accommodation price.

 <p>Apply via your local INTO educational counsellor</p> <p>If you would like us to put you in contact with one of our counsellors, please contact us.</p>	 <p>Apply online</p> <p>Complete our online application form: apply.intostudy.com</p>	 <p>Need some help with your tuition fees?</p> <p>Check to see if you're eligible for a scholarship: www.intostudy.com/gcu/scholarships</p>
--	--	---

Discover more online

For students:

www.intostudy.com/gcu

For education counsellors:

partnerportal.intoglobal.com/gcu

Connect with us



Through innovative partnerships with leading universities, we expand opportunities for higher education, ensuring success and transforming the lives of our students and staff.

INTO GIVING

Working across the globe, INTO Giving supports projects that increase access to education and improve the quality of teaching and learning. For more information visit www.into-giving.com

Contact us

Enquiries and applications:

ukes@intoglobal.com

or +44 1273 876040

Visit the Centre:

intogcu@gcu.ac.uk

or +44 141 331 8080

Centre address details:

INTO Glasgow Caledonian University

Glasgow Caledonian University

Cowcaddens Road

Glasgow

G4 OBA

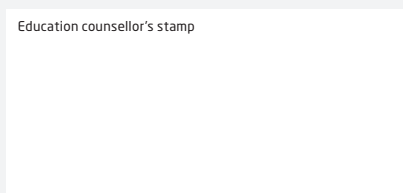
Scotland, United Kingdom

© INTO Scotland LLP, September 2019. Every effort is made to ensure that the information provided in this document is correct at the time of publication. However, from time to time there may be occasions where some of the information has changed since the date of publication. The most up-to-date information can be found on our website at www.intostudy.com/gcu – please refer to this before submitting your application. If, in our opinion, we consider that any change has been made which has a material impact on any offer that has been made to you to study with us, we will inform you of these changes in writing. The information provided in this document is subject to INTO Glasgow Caledonian University's terms and conditions, which can be accessed at www.intostudy.com/gcu/terms

INTO Scotland LLP, registered number: S0301861.

Registered office: Glasgow Caledonian University, The Britannia Building, City Campus, Cowcaddens Road, Glasgow, Strathclyde, Scotland, G4 OBA

Education provider sponsor number J5TNG1750



University for the Common Good