

INTO 

 **Newcastle**
University

UNIVERSITY PATHWAYS

for international students | 2021-22

TEF Gold

**RUSSELL
GROUP**

Henshel Building
Bedson Teaching Centre
King's Road Centre
Robinson Library
Great North Museum, Hancock

For making an impact

GLOBAL TOP
160
UNIVERSITY
(QS World University Rankings 2021)

RANKED
16th
in the UK for global
research power (REF 2014)

**GLOBALLY
CONNECTED**
with almost a quarter of a
million worldwide alumni

For your future career

**STRONG
EMPLOYER LINKS**
with NHS, Siemens, Accenture,
Eversheds Sutherland, Civil Service
Fast Stream and many more

Top **20**
most targeted
University
by Times Top 100 Employers

TOP **10** for Graduate
Prospects
in all three
published
league tables
(The Times Good University Guide 2019, Guardian University
Guide 2020, The Complete University Guide 2021)

For a welcoming community

Joint **1st**
for affordability
in the UK
(QS Best Student Cities 2019)

TOP **10**
Best UK Student City
(QS Best Student Cities 2019)

29K STUDENTS
150 COUNTRIES

For top subjects

IN THE UK

3rd
Anatomy
and Physiology
(The Complete University Guide 2021)

3rd
Communication
and Media Studies
(The Complete University Guide 2021)

7th
Architecture
(The Complete University Guide 2021)

10th
Marketing
(The Complete University Guide 2021)

IN THE WORLD

Top 100
Psychology
(QS World University
Rankings by Subject 2020)

Top 125
Law
(Times Higher Education World
Rankings by Subject 2020)

Top 150
Life Sciences
(Times Higher Education World
Rankings by Subject 2020)

Top 150
Civil and Structural
Engineering
(QS World University
Rankings by Subject 2020)



An education for life

Welcome to INTO Newcastle University, your pathway to a degree from Newcastle University – an institution with a legacy of academic excellence with real global impact. We give international students like you the opportunity to study at a university consistently ranked among the best in the UK.

At INTO Newcastle, you'll study a specialist programme designed exclusively for international students and specially tailored to the requirements of the University. We'll help you improve your English language skills and adjust to life as a student in the UK, so you can confidently progress to your degree at Newcastle University.

You'll complete your course at our modern Study Centre on the University's beautiful city centre campus. And with access to modern facilities in the Centre and on campus, you'll feel like part of the University from day one.

Choosing to study abroad is a big decision, but at INTO Newcastle University we'll give you everything you need to succeed at university and beyond. Just take a look at our student success rates in 2018–19.

**CHOOSE #INTONEWCASTLE
AND OPEN UP A LIFETIME
OF OPPORTUNITIES.**

97% PASSED

80% of which were **ELIGIBLE** to progress

Passed: % of those who completed their pathway
Eligible: % eligible to progress to Newcastle University of those who passed



About the University

Driving innovation

Over its 180-year history, Newcastle has established itself as an internationally recognised university with many impressive accolades to its name, including Top 175 global university (QS World University Rankings 2021).

It's also recognised for providing an impressive range of degrees, with 27 subjects in the top 20 in the UK (The Times and The Sunday Times Good University Guide 2020).

You can choose from over 200 undergraduate and 300 postgraduate and research degrees in a wide variety of subjects. From Accounting, Architecture and Biomedical Sciences to Engineering, Pharmacy and Law: it's easy to find your perfect programme.

Educating future generations

Newcastle's teaching is inspired by its internationally-excellent research, meaning you'll learn the latest theories and techniques from leading experts in their field.

At Newcastle you'll receive a high level of teaching, designed to challenge you and help reach your potential. Your teachers will inspire you to think differently and challenge ideas.

It's no wonder then, that Newcastle University is top 25 in Europe for teaching excellence (Times Higher Education Europe Teaching Rankings 2019) and currently holds a Gold Award for teaching quality (Teaching Excellence Framework 2017).

Get career-ready

With high-quality degrees, a focus on developing employability skills and a strong reputation with employers, Newcastle University will equip you with the skills needed to become a highly employable graduate.

Many of the University's degrees are also accredited by, and developed with, professional organisations, preparing you for the world of work and further study.

You'll benefit from the University's award-winning careers support and gain valuable experience and skills by taking part in the NCL+ initiative, which includes extracurricular activities and placements. And when you graduate, you'll join a network of successful graduates who are accomplishing great things!

Global influence

With campuses in Newcastle, London, Singapore and Malaysia, and a community of 29,000 students from 150 different countries, Newcastle is a truly global university.

When you finish your studies, you'll join an international network of nearly a quarter of a million alumni in more than 200 countries, so you'll never be far from a fellow Newcastle graduate!

Making an impact

As a research-intensive University, it will come as no surprise that Newcastle is rated 16th in the UK for 'research power' (Research Excellence Framework 2014).

From pioneering medical and scientific breakthroughs, to investigating global issues in health, the environment and society, the University's research helps to transform people's lives around the world and truly make an impact on society.

'We are committed to diversity and are proud of our international outlook, with a student community that includes students from throughout the UK and 150 countries worldwide.'

Professor Chris Day
Vice-Chancellor, Newcastle University

Top 25

in Europe for
teaching excellence

(Times Higher Education Europe
Teaching Rankings 2019)

The things we
do here make a
difference out there

Life on campus

'Almost all of the university's facilities are open to us. I was beyond enthusiastic as we could familiarise ourselves with what the university had to offer and explore the campus just like the university students.'

Anjie, Indonesia
Studied International Foundation in Humanities and Social Sciences
at INTO Newcastle University

Your Study Centre

You'll complete your INTO course at our modern, safe Study Centre at the heart of the Newcastle University campus. From day one, you'll become part of the Newcastle University student community – with access to the same libraries, Students' Union and cafés as everyone else on campus. As well as contemporary classrooms and fantastic IT facilities, the Centre provides specialist facilities including:

- two modern science labs
- lecture theatres
- an Architecture studio

Supporting you

Need advice? The Centre offers 24-hour security from the moment you arrive. From visa and immigration support to airport pick-up and an orientation programme in your first week, you'll have all the help you need to feel at home. Our Student Experience team can assist you with:

- settling in to your new home
- extra support if you're under 18
- opening a bank account
- a 24-hour emergency telephone number
- planning a trip
- answering an academic question

Discover great facilities at Newcastle

Once you progress to your degree at Newcastle University, there are even more incredible facilities to enjoy. The University's campus is built around you and, thanks to a number of recent multi-million pound investments, is constantly evolving. You'll have access to:

- four libraries run by the award-winning library service team
- a range of resources in over 150 languages in the popular Language Resource Centre
- IT facilities including 3,000+ computers, dedicated support staff
- access to exceptional sports facilities and activity programmes



**Award-winning
library service**



TOP SPECIALIST FACILITIES

Depending on your degree, you'll benefit from some exceptional facilities when you progress

-  Engineering equipment such as earthquake-resistant testing tables
-  Bookable meeting rooms, an event suite and Bloomberg terminals
-  24/7 Architecture studio with CAD facilities
-  Purpose-built Mooting Room and dedicated Law library
-  Virtual Reality Suite and Cyber Physical Lab

93%

overall student satisfaction
(INTO Annual Experience Survey 2019)

Discover Newcastle



Your home from home



'I'm really attached to this city. I adore it. There are so many places to go!'

Majd, Lebanon
Completed International Foundation and progressed to BSc (Hons) Biomedical Sciences at Newcastle University

Consistently voted one of the UK's favourite student cities, Newcastle has heaps of character, friendly locals and a thriving student community. Living costs are affordable and it's easy to explore on foot – so it's the perfect place to study! You can discover:

- some of the best shopping in the UK and a vibrant nightlife scene
- the beautiful Northumbrian coastline, which is just a bus or metro ride away
- live music, theatre and arts in Ouseburn – the city's exciting cultural quarter
- authentic global food, with a buzzing Chinatown district

No matter who you are or what you enjoy, you'll fall in love with Newcastle upon Tyne.

4th

In the UK for city life

(Whatuni Student Choice Awards 2019)



With a choice of options, including on-campus residences and homestay accommodation, it's easy to find the perfect place to call home.

Live as part of a vibrant international student community in a modern, on-campus residence or choose a homestay option to experience British life and culture first hand. There's a range of options available to suit your needs.

The self-catered student residences, **Joseph Cowen Halls** and **Bernicia Halls**, are perfectly situated in the centre of Newcastle on campus, right next to the INTO Centre.

There's a sociable, community environment in the residences, with comfortable shared communal spaces to enjoy with friends. Here, you can relax and focus on your studies knowing you're in a safe and secure environment.

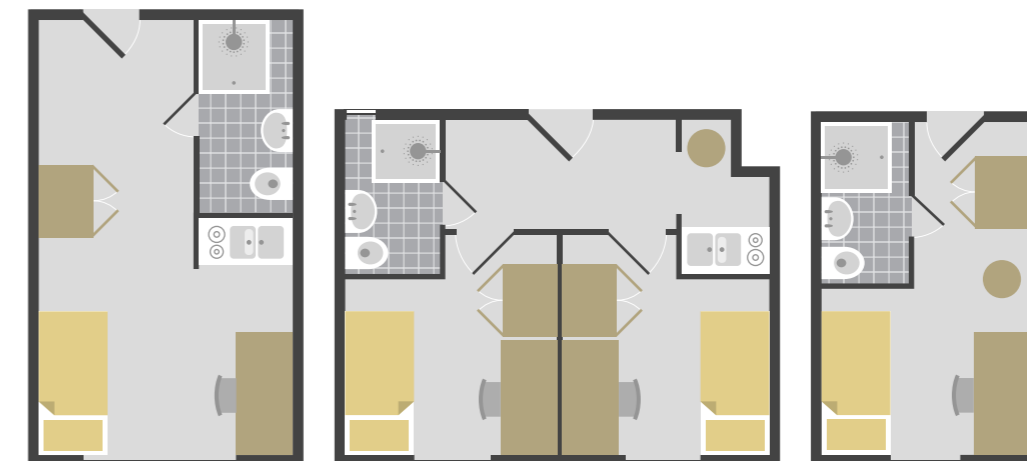
Supporting you

In our residences you'll find staff available 24/7 to offer support, and we'll also provide you with a 24-hour emergency telephone number.

If you're under 18, we offer extra support from on-site accommodation support staff or homestay hosts.

Homestay

This is a unique opportunity to experience British life and culture first hand. You will have a private room in a carefully selected host's home, sharing mealtimes and living spaces.



SINGLE BEDROOM STUDIO

- En suite bathroom
- Private kitchen

SHARED STUDIO

- Private bathroom
- Private kitchen

SINGLE STUDY BEDROOM

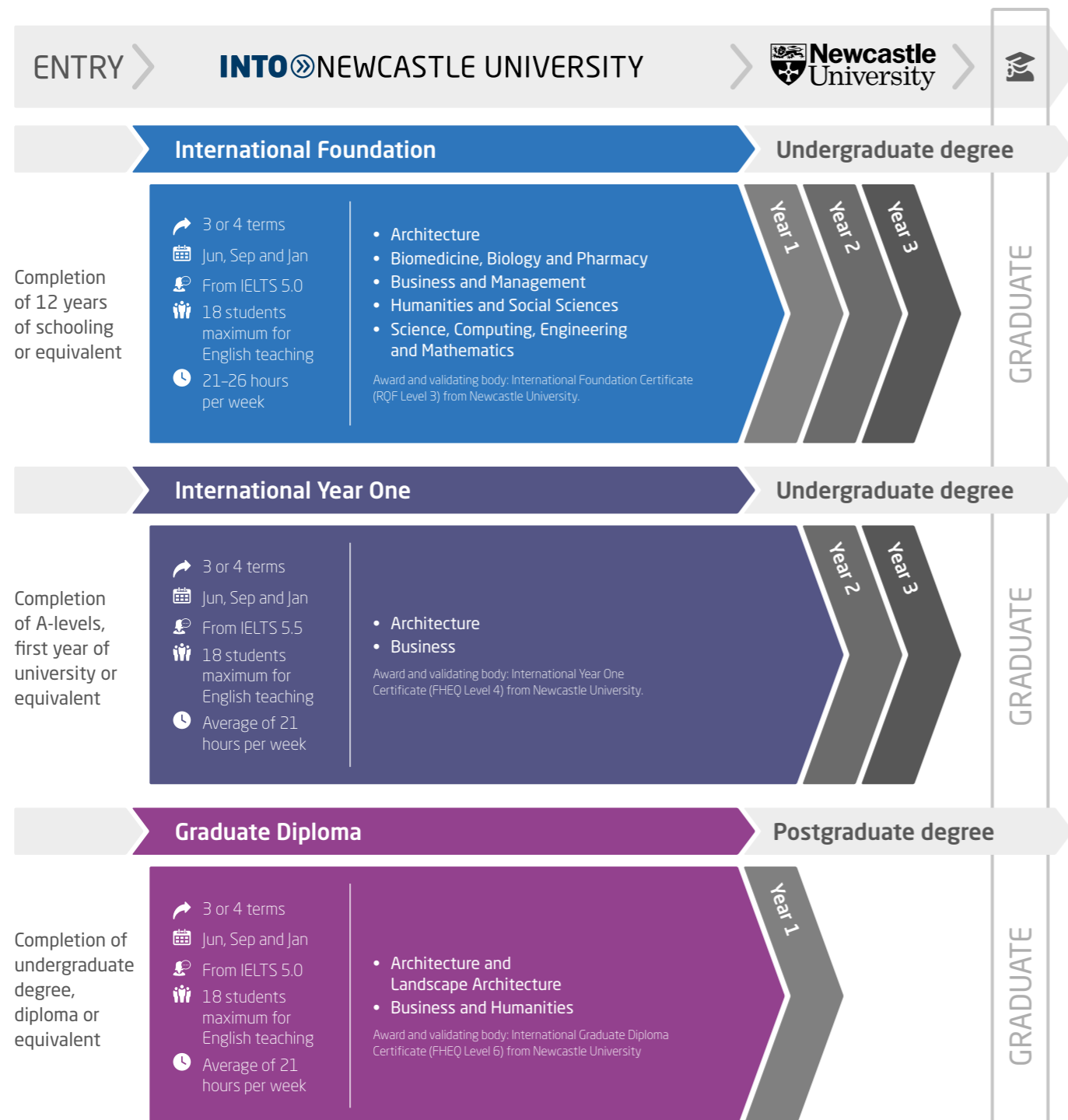
- En suite bathroom
- Shared kitchen

- 1 MIN Walk to INTO Centre
- Laundry facilities
- Wi-Fi
- 24/7 staff
- Communal areas
- Social activities

INTO Newcastle University aims to provide the accommodation requested. However, there may be occasions when INTO Newcastle University is unable to provide the requested accommodation and reserves the right to offer an alternative type of accommodation instead. The price for any alternative accommodation may differ and will be confirmed to students at the time of their offer.

Choosing your course

Prepare for your university degree with our tailored, academic pathway programmes designed in partnership with Newcastle University. You'll benefit from university-style teaching for subject-based modules and high academic standards. Then, when it comes to progressing to your chosen degree, we'll support you with your university application.



Please note that course length and start month options may vary depending on the pathway chosen. Please visit www.intostudy.com/newcastle/courses for full information.

International Foundation

Architecture - FA

- > Gain practical experience in the INTO Centre Architecture Studio.
- > Be inspired by field trips to Manchester, Edinburgh and Glasgow and study their historic buildings.

Modules

You will need to earn 120 credits from the following modules to successfully complete your pathway programme:

- Architectural Communication (20 credits)
- Architecture, Culture and History (20 credits)
- English for Academic Purposes (40 credits)
- Introduction to Architecture 1 (20 credits)
- Introduction to Architecture 2 (20 credits)

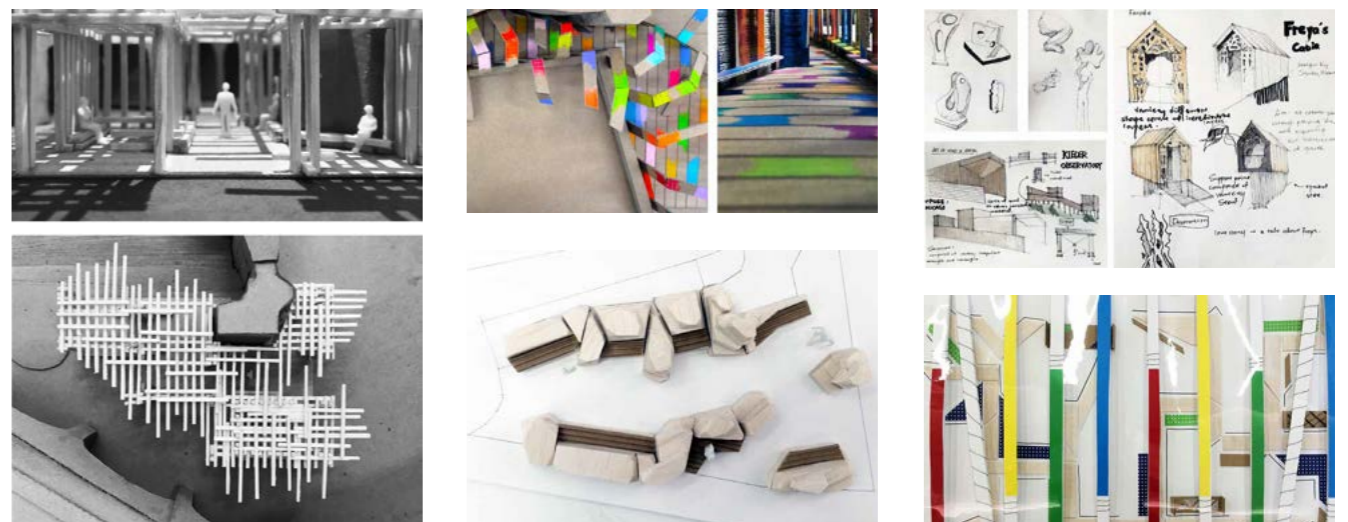
For full details of portfolio guidelines, please visit: www.intostudy.com/ncl/architecture-portfolio-fdn

Progress to 3 degrees. Find out more online at www.intostudy.com/newcastle/FA

"The International Foundation provided a smooth transition between high school and university. It helped me to settle into student life abroad, and put us a huge step ahead of other students."

Tian Hong, Hong Kong
Graduated with BA (Hons) Architecture from Newcastle University

Building your portfolio
Throughout your Architecture pathway, you'll record and reflect upon your new knowledge through sketchbooks and process work – producing a final portfolio to demonstrate your skills. Here are some examples of students' work from their Architecture Yearbook:



Portfolio samples from: Dong-Pei, Jiwoo, Xixian, Xiaoqian, Nagyong.

Progress to Year 1 of an undergraduate degree at Newcastle University

Start date

3 term: Sep or Jan
4 term: Sep or Jun

English language entry requirements*

3 term: IELTS 5.5 (with a minimum of 4.5 in any subskill) or equivalent
4 term: IELTS 5.0 (with a minimum of 4.5 in all subskills) or equivalent

Age requirement

16 years and above**

* If you do not meet the minimum English language requirements, you should apply for our Academic English course. See page 18 for more information.
** All students commencing courses on a published September start date must be 17 years old by 31 December of that calendar year. For all other start dates, students must be 17 years old on the published start date of the programme.

7th

in the UK for Architecture

(The Complete University Guide 2021)

"Architecture at INTO Newcastle has a supportive studio culture, and the tutors shared a lot of their time with us. Now, I'm studying in my second year at Newcastle University, and I've realised I gained a solid foundation through my INTO programme."

Anna, Russia
Completed International Foundation in Architecture and progressed to BA (Hons) Architecture at Newcastle University

Progress to Year 1 of an undergraduate degree at Newcastle University

Start date

3 term: Sep or Jan
4 term: Sep or Jun

English language entry requirements*

3 term: IELTS 5.5 (with a minimum of 4.5 in any subskill) or equivalent

4 term: IELTS 5.0 (with a minimum of 4.5 in all subskills) or equivalent

Students intending to progress to one of the degrees listed below must meet the following requirements:

3 term: IELTS 5.5 (with a minimum of 5.0 in all subskills) or equivalent

4 term: IELTS 5.0 (with a minimum of 4.5 in all subskills) or equivalent

Biochemistry, Biomedical Genetics, Biomedical Sciences, Medical Science (deferred choice), Pharmacology, Pharmacy, Physiological Sciences, Psychology and Biology, Psychology and Sport and Exercise Science, Psychology, Sport and Exercise Science

Age requirement

16 years and above**

Start date

3 term: Sep or Jan
4 term: Sep or Jun

English language entry requirements*

3 term: IELTS 5.5 (with a minimum of 4.5 in any subskill) or equivalent

4 term: IELTS 5.0 (with a minimum of 4.5 in all subskills) or equivalent

For students intending to progress to Newcastle Law School:

3 term: IELTS 6.0 (with a minimum of 5.5 in all subskills) or equivalent

4 term: IELTS 5.5 (with a minimum of 5.0 in all subskills) or equivalent

Age requirement

16 years and above**

* If you do not meet the minimum English language requirements, you should apply for our Academic English course. See page 18 for more information.

** All students commencing courses on a published September start date must be 17 years old by 31 December of that calendar year. For all other start dates, students must be 17 years old on the published start date of the programme.

International Foundation

Biomedicine, Biology and Pharmacy - FBP

- > Support your theoretical studies with hands-on experience at INTO's dedicated science laboratories.
- > Receive a Samsung Galaxy tablet with access to digital textbooks and interactive studies.

Modules

You will need to earn 120 credits from the following modules to successfully complete your pathway programme:

Biology (20 or 40 credits)	Mathematics and Statistics (20 credits)
Chemistry (20 credits)	Physics (20 credits)
English for Academic Purposes (20 or 40 credits)	Study Skills and ICT (20 credits)

Progress to **25+** degrees. Find out more online at www.intostudy.com/newcastle/FBP

Business and Management - FBM

- > Benefit from high-level support on your programme, progressing to independent study in preparation for your degree.
- > Learn from experienced lecturers across a range of specialist subjects.

Modules

You will need to earn 120 credits from the following modules to successfully complete your pathway programme:

English for Academic Purposes (40 credits)	Mathematics for Business (20 credits)
Introduction to Accounting (10 credits)	Study Skills and Projects (30 credits)
Introduction to Business (20 credits)	

Progress to **10+** degrees. Find out more online at www.intostudy.com/newcastle/FBM

Prepare to progress to a degree at Newcastle University:

 **10th**

in the UK for
Marketing

(The Complete University Guide 2021)

 **Top 20**

in the UK for Life
Sciences and Medicine

(QS World University By Subject 2020)

"The thing I enjoyed most about the International Foundation in Business and Management was the ability to use Newcastle University's facilities – for example, the Bloomberg terminals at Newcastle University Business School."

Ali, Iran
Completed International Foundation in Business and Management and progressed to BSc (Hons) Economics and Finance at Newcastle University



International Foundation

Humanities and Social Sciences - FHS

- > Experience learning outside the classroom with field trips, such as a visit to the theatre to see a Shakespeare play in action.
- > Develop teamwork and communication skills with activities such as 'Dead Poet's Society' and 'Show Tunes'.

Modules

You will need to earn 120 credits from the following modules to successfully complete your pathway programme:

English for Academic Purposes (40 credits)	Introduction to the Study of Humanities and Social Sciences (20 credits)
Introduction to British Institutions and Culture (10 credits)	Study Skills and Projects (30 credits)
Introduction to Sociology (20 credits)	

Progress to **15+** degrees. Find out more online at www.intostudy.com/newcastle/FHS

Science, Computing, Engineering and Mathematics - FSCEM

- > Benefit from INTO's computer lab, with Raspberry Pi kits for budding computer programmers.
- > Receive a Samsung Galaxy tablet with access to digital textbooks and interactive studies.

Modules

You will need to earn 120 credits from the following modules to successfully complete your pathway programme:

Chemistry (20 credits)	Personal and Professional Development (20 credits)
English for Academic Purposes (20 or 40 credits)	Physics (20 credits)
Mathematics for Physical Sciences and Engineering 1 (20 credits)	Principles of Computing (20 credits)
Mathematics for Physical Sciences and Engineering 2 (20 credits)	Study Skills and ICT (20 credits)

Progress to **50+** degrees. Find out more online at www.intostudy.com/newcastle/FSCEM

"We are able to experience and live on the campus just like the university students. Access to the library provides significant help with my research and gives me plenty of spaces to work in aside from my room."

Anjie, Indonesia
Completed International Foundation in Humanities and Social Sciences and progressed to BA (Hons) Communication and Media Studies at Newcastle University



Progress to Year 1 of an undergraduate degree at Newcastle University

Start date

3 term: Sep or Jan
4 term: Sep or Jun

English language entry requirements*

3 term: IELTS 5.5 (with a minimum of 4.5 in any subskill) or equivalent

4 term: IELTS 5.0 (with a minimum of 4.5 in all subskills) or equivalent.

For students intending to progress to Newcastle Law School: 3 term: IELTS 6.0 (with a minimum of 5.5 in all subskills) or equivalent 4 term: IELTS 5.5 (with a minimum of 5.0 in all subskills) or equivalent

Age requirement

16 years and above**

Start date

3 term: Sep or Jan
4 term: Sep or Jun

English language entry requirements*

3 term: IELTS 5.5 (with a minimum of 4.5 in any subskill) or equivalent

4 term: IELTS 5.0 (with a minimum of 4.5 in all subskills) or equivalent

Age requirement

16 years and above**

* If you do not meet the minimum English language requirements, you should apply for our Academic English course. See page 18 for more information.

** All students commencing courses on a published September start date must be 17 years old by 31 December of that calendar year. For all other start dates, students must be 17 years old on the published start date of the programme.

Prepare to progress to a degree at Newcastle University:

 **3rd**

in the UK for Communication
and Media Studies

(The Complete University Guide 2021)



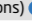

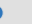
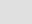

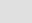

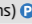
 **Top 20**


in the UK for
Chemical Engineering

(The Complete University Guide 2021)

International Foundation Progression

There are more than 120 International Foundation progression degree options at Newcastle University. You can progress to any of these from one of our INTO pathway programmes. Below is a selection of some of the most popular. See pages 11–13 for more details on the pathways.

Degree	Specific requirements	English level	Final academic grade
International Foundation in Architecture (FA)			
Architecture BA (Hons)	Architecture 1 and Architecture 2 (60% average)	65	60%
Architecture and Urban Planning BA (Hons)		65	60%
International Foundation in Biomedicine, Biology and Pharmacy (FBP)			
Biochemistry BSc (Hons)	Mathematics and Statistics (55%), Chemistry (55%), Biology 1 (70%), Biology 2 (70%)	65 (with minimum 65 in all subskills)	65%
Biology (Cellular and Molecular Biology) BSc (Hons) 	Mathematics and Statistics (55%), Chemistry (55%), Biology 1 (70%), Biology 2 (70%)	65	65%
Biomedical Genetics BSc (Hons)	Mathematics and Statistics (55%), Chemistry (55%), Biology 1 (70%), Biology 2 (70%)	65 (with minimum 65 in all subskills)	65%
Biomedical Sciences BSc (Hons)	Mathematics and Statistics (55%), Chemistry (55%), Biology 1 (70%), Biology 2 (70%)	65 (with minimum 65 in all subskills)	65%
Environmental Science BSc (Hons) 	Mathematics and Statistics (55%)	65	60%
Food Business Management and Marketing BSc (Hons) 	Mathematics for Business (60%)	65	65%
Nutrition with Food Marketing BSc (Hons) 	Mathematics and Statistics (55%), Chemistry (60%), Biology 1 (65%), Biology 2 (65%)	65	65%
Pharmacology BSc (Hons)	Mathematics and Statistics (55%), Chemistry (55%), Biology 1 (70%), Biology 2 (70%)	65 (with minimum 65 in all subskills)	65%
Pharmacy MPharm (Hons)	Mathematics and Statistics (55%), Chemistry (70%), Biology 1 (55%), Biology 2 (55%)	65 (with minimum 65 in all subskills)	65%
Physiological Sciences BSc (Hons)	Mathematics and Statistics (55%), Chemistry (55%), Biology 1 (70%), Biology 2 (70%)	65 (with minimum 65 in all subskills)	65%
Psychology BSc (Hons)	Mathematics and Statistics (60%), two other different Science subjects (60%)	65 (with minimum 65 in all subskills)	65%
International Foundation in Business and Management (FBM)			
Accounting and Finance BSc (Hons)	Mathematics for Business (65%)	65	70%
Business Management BA (Hons)	Mathematics for Business (60%)	65	65%
Economics BSc (Hons)	Mathematics for Business (65%)	65	70%
Economics and Business Management BA (Hons) 	Mathematics for Business (65%)	65	70%
Economics and Finance BSc (Hons)	Mathematics for Business (65%)	65	70%
Law LLB (Hons)	No module less than 55%	70	65%
Marketing BSc (Hons)	Mathematics for Business (60%)	65	65%
Marketing and Management BSc (Hons)	Mathematics for Business (60%)	65	65%
Politics and Economics BA (Hons)	Mathematics for Business (65%)	65	60%
International Foundation in Humanities and Social Sciences (FHS)			
Combined Honours BA (Hons)*		65	60%
Film and Media BA (Hons)		65	60%
International Relations BA (Hons)		65	60%
Law LLB (Hons)	No module less than 55%	70	65%
Media, Communication and Cultural Studies BA (Hons)		65	60%
Politics and International Relations BA (Hons)		65	60%
Sociology BA (Hons)		65	60%
International Foundation in Science, Computing, Engineering and Mathematics (FSCEM)			
Chemical Engineering BEng (Hons)	Mathematics for Physical Sciences and Engineering 1 (65%), Mathematics for Physical Sciences and Engineering 2 (65%), Chemistry (65%), Physics (65%)	60	65%
Civil and Structural Engineering BEng (Hons) 	Mathematics for Physical Sciences and Engineering 1 (65%), Mathematics for Physical Sciences and Engineering 2 (65%), Physics (65%)	60	65%
Civil Engineering BEng (Hons) 	Mathematics for Physical Sciences and Engineering 1 (65%), Mathematics for Physical Sciences and Engineering 2 (65%), Physics (65%)	60	65%
Computer Science BSc (Hons) 	Mathematics for Physical Sciences and Engineering 1 and 2 (50%)	65	60%
Computer Science (Game Engineering) BSc (Hons) 	Mathematics for Physical Sciences and Engineering 1 and 2 (50%)	65	60%
Computer Science (Software Engineering) BSc (Hons) 	Mathematics for Physical Sciences and Engineering 1 and 2 (50%)	65	65%
Electrical and Electronic Engineering BEng (Hons)	Mathematics for Physical Sciences and Engineering 1 (60%), Mathematics for Physical Sciences and Engineering 2 (60%), Physics (60%)	60	60%
Marine Technology with Marine Engineering BEng (Hons)	Mathematics for Physical Sciences and Engineering 1 (60%), Mathematics for Physical Sciences and Engineering 2 (60%), Physics (60%)	60	60%
Mathematics and Accounting BSc (Hons)	Mathematics for Physical Sciences and Engineering 1 and 2 (65%)	65	60%
Mathematics and Statistics BSc (Hons)	Mathematics for Physical Sciences and Engineering 1 and 2 (65%)	60	60%
Mechanical Engineering BEng (Hons)	Mathematics for Physical Sciences and Engineering 1 (65%), Mathematics for Physical Sciences and Engineering 2 (65%), Physics (65%)	60	65%

 Degree option with a year in industry also available.

* The Combined Honours degree offers a diverse range of subjects including: Archaeology, Business, Classics, Education, English Linguistic Studies, Film Studies/Film Practice, Geography, German, History of Art, Japanese, Music, Philosophy, Portuguese, Psychology, Spanish and Latin American Studies.

Find comprehensive information on all academic pathway programmes, degree options and progression requirements at: www.intostudy.com/newcastle/courses

International Year One

Architecture - IYOA

- Gain hands-on experience in the INTO Centre Architecture Studio.
- Learn through an open design-studio culture, with an emphasis on the development of manual creativity and design skills.
- Benefit from practical learning as you're introduced to construction materials and technologies, research methods and computer-aided drawing.

Modules

You will need to earn 120 credits from the following modules to successfully complete your pathway programme:

Architectural Communication (20 credits)	Architecture History and Theory (20 credits)
Architectural Design 1 (20 credits)	Architecture Technology (20 credits)
Architectural Design 2 (20 credits)	English for Academic Purposes (20 credits)

For full details of Architecture portfolio guidelines, please visit:

www.intostudy.com/ncl/architecture-portfolio-intl-dip

Progress to 2 degrees. Find out more online at www.intostudy.com/newcastle/IYOA

Business - IYOB

- Benefit from practical learning including access to Mintel and business journals such as the Journal of Business Management, Marketing Week and the Harvard Business Review.
- Learn how to apply your knowledge through projects, including researching, planning and writing a strategic marketing plan for a new product idea.
- Consider the different ways in which data can be collected, analysed and presented, and become familiar with standard statistical packages such as Minitab.

Modules




You will need to earn 120 credits from the following modules to successfully complete your pathway programme:

Academic and Professional Development (20 credits)	Management and Organisation (20 credits)
English for Academic Purposes (20 credits)	Marketing (20 credits)
Introduction to Economics (20 credits)	Quantitative Methods (20 credits)

Progress to 3 degrees. Find out more online at www.intostudy.com/newcastle/IYOB

International Year One Progression

There are five International Year One progression degree options at Newcastle University. You can progress to any of these from one of our INTO pathway programmes.

Degree	Pathway(s)	Specific requirements	English level	Final academic grade
Architecture BA (Hons)	IYOA	Architecture 1 and 2 60% average, with no less than 50% in each module	65	60%
Architecture and Urban Planning BA (Hons)	IYOA	No less than 50% in each module	65	60%
Business Management BA (Hons) 	IYOB	55% average with no less than 40% in each module	65	55%
Marketing BSc (Hons) 	IYOB	55% average with no less than 40% in each module	65	55%
Marketing and Management BSc (Hons) 	IYOB	55% average with no less than 40% in each module	65	55%

 Degree option with a year in industry also available.

Progress to Year 2 of an undergraduate degree at Newcastle University

Start date

3 term: Sep or Jan
4 term: Jun or Sep

English language entry requirements*

3 term: IELTS 6.0 (with a minimum of 5.5 in writing) or equivalent

4 term: IELTS 5.5 (with a minimum of 5.0 in all subskills) or equivalent

Age requirement

16 years and above**

* If you do not meet the minimum English language requirements, you should apply for our Academic English course. See page 18 for more information.

** All students commencing courses on a published September start date must be 17 years old by 31 December of that calendar year. For all other start dates, students must be 17 years old on the published start date of the programme.

Prepare to progress to a degree at Newcastle University:

 7th

in the UK for Architecture

(The Complete University Guide 2021)

 Top 200

in the world for Business and Economics

(Times Higher Education World University Rankings by Subject 2020)

Progress to a postgraduate degree at Newcastle University

Start date

3 term: Sep or Jan
4 term: Jun or Sep

English language entry requirements*

3 term: IELTS 5.5 (with a minimum of 5.5 in all subskills) or equivalent
4 term: IELTS 5.0 (with a minimum of 5.0 in all subskills) or equivalent

Age requirement

17 years and above

* If you do not meet the minimum English language requirements, you should apply for our Academic English course. See page 18 for more information.

Prepare to progress to a degree at Newcastle University:

7th

in the UK for Architecture

(The Complete University Guide 2021)

10th

in the UK for Marketing

(The Complete University Guide 2021)

Graduate Diploma

Architecture and Landscape Architecture - GDA

- > Progress to a range of postgraduate degrees that develop critical thinking around your own interests.
- > Attend degree shows, public lectures and research workshops at the School of Architecture, Planning and Landscape.

What will I study?

You will need to earn 120 credits from the following modules to successfully complete your pathway programme:

Architecture, Culture and History (20 credits)	Design in Urban Context (20 credits)
Contextualised Design for Built Environment (20 credits)	English for Academic Purposes (40 credits)
	Professional Studies for Architecture (20 credits)

Progress to **13** degrees. Find out more online at www.intostudy.com/newcastle/GDA

Business and Humanities - GDBH

- > Progress to an internationally-focused postgraduate degree in Business, Finance, Journalism and more.
- > Develop your independent study skills in Semester 2, when you'll have fewer formal classes and more one-to-one support from tutors.

What will I study?

You will need to earn 120 credits from the following modules to successfully complete your pathway programme:

Business and Management (20 credits)	International Relations (10 credits)
Economics (20 credits)	Introduction to Humanities (20 credits)
English for Academic Purposes (40 credits)	Study Skills and Research (30 credits)
Financial Analysis (10 credits)	Social and Cultural Studies (20 credits)

Progress to **50+** degrees. Find out more online at www.intostudy.com/newcastle/GDBH

"Newcastle University is a well recognised institution all over the world, which makes it a great brand name on every student's CV. Furthermore, my knowledge of English improved significantly, which is a necessary skill to have in a modern business world."

Anna, Ukraine
Graduated with MA International Business Management from Newcastle University



Graduate Diploma Progression

There are more than 60 Graduate Diploma progression degree options at Newcastle University. You can progress to any of these from one of our INTO pathway programmes. Below is a selection of some of the most popular. See page 16 for more details on the pathways.

Degree	Specific requirements	English level	Final academic grade
Graduate Diploma in Architecture and Landscape Architecture (GDA)			
Advanced Architectural Design: Architecture and Cities MSc	Architecture 1 and 2 (60%)	65 (with minimum 60 in all subskills)	55%
Advanced Architectural Design: Property Development MSc	Architecture 1 and 2 (60%)	65 (with minimum 60 in all subskills)	55%
Architecture MArch	70% minimum in Architecture 1 and 2. Progression is also dependent on successful interview.	65 (with minimum of 60 in all subskills)	60%
Landscape Architecture Studies MA	Architecture 1 and 2 (60%)	65 (with minimum 60 in all subskills)	55%
Urban Design MA	Architecture 1 and 2 (60%)	65 (with minimum 60 in all subskills)	55%
Graduate Diploma in Business and Humanities (GDBH)			
Accounting, Finance and Strategic Investment MSc		65 (with minimum 60 in all subskills)	60%
Art Museum and Gallery Studies MA		65 (with minimum 60 in writing and speaking)	60%
Creative Arts Practice MA		65 (with minimum 60 in writing and speaking)	60%
Cross-Cultural Communication MA		65 (with minimum 60 in writing)	60%
Cross-Cultural Communication and Applied Linguistics MA		65 (with minimum 60 in writing)	60%
Cross-Cultural Communication and Education MA		65 (with minimum 60 in writing)	60%
Cross-Cultural Communication and International Marketing MA		65 (with minimum 60 in writing)	60%
Cross-Cultural Communication and International Relations MA		65 (with minimum 60 in writing)	60%
Cross-Cultural Communication and Media Studies MA		65 (with minimum 60 in writing)	60%
E-Business MSc		65 (with minimum 60 in all subskills)	60%
E-Business (E-Marketing) MSc		65 (with minimum 60 in all subskills)	60%
E-Business (Information Systems) MSc		65 (with minimum 60 in all subskills)	60%
Education: International Perspectives (Leadership and Management) MA		65 (with minimum 60 in writing)	60%
Education: International Perspectives (Teaching and Learning) MA		65 (with minimum 60 in writing)	60%
Education: International Perspectives (Technology in Education) MA		65 (with minimum 60 in writing)	60%
European Union Studies MA		65	60%
Global Human Resource Management MSc		65 (with minimum 60 in all subskills)	60%
Heritage Studies MA		65 (with minimum 60 in writing and speaking)	60%
Human Geography Research MA		65	60%
International Business Management MSc		65 (with minimum 60 in all subskills)	60%
International Commercial Law LLM	No module less than 55%	65 (with minimum of 60 in writing)	65%
International Financial Analysis MSc		65 (with minimum 60 in all subskills)	60%
International Law and Global Challenges LLM	No module less than 55%	65 (with minimum of 60 in writing)	65%
International Marketing MSc		65 (with minimum 60 in all subskills)	60%
International Multimedia Journalism MA		65 (with minimum 60 in writing and speaking)	60%
International Political Economy MA		65	60%
International Politics (Critical Geopolitics) MA		65	60%
International Politics (Global Justice and Ethics) MA		65	60%
International Politics (Globalisation, Poverty and Development) MA		65	60%
International Relations MA		65	60%
Law LLM	No module less than 55%	65 (with minimum 60 in writing)	65%
Media and Journalism MA		65 (with minimum 60 in writing and speaking)	60%
Media and Public Relations MA		65 (with minimum 60 in writing and speaking)	60%
Museum Studies MA		65 (with minimum 60 in writing and speaking)	60%
Politics (Research) MA		65	60%
Regional Development and Spatial Planning MA		65 (with minimum 60 in all subskills)	60%
Sociology MA		65	60%
Transport Planning and Engineering MSc	Progressing students are required to pass a university health and safety test	65 (with minimum 60 in all subskills)	60%
Urban Energy Technology and Policy MRes		65 (with minimum 60 in all subskills)	60%
Urban Planning MSc		65 (with minimum 60 in all subskills)	60%
World Politics and Popular Culture MA		65	60%

Improve your English language skills to prepare for further academic study

Start date

16 weeks: July
1-4 terms: Jun, Sep, Jan, Apr

English language entry requirements

From IELTS 3.0 or equivalent

Age requirement

16 years and above

Class size and hours

Maximum of 18 students
30 learning hours per week, with 25 hours of face-to-face contact

English courses

EN Academic English



> For students who need to increase their IELTS level in order to progress to university. This intensive course offers rapid progress of up to one IELTS band per term.

Course features

- You will learn through face-to-face teaching and online learning to communicate effectively in English and improve your reading, writing, speaking and listening skills.
- A diverse social programme and effective academic content will help you to develop the fluency and confidence you need to progress to further study.
- Access INTO's interactive online learning platform, MyINTO, outside of class to practise your English language skills, complete tasks and engage with classmates.
- Developed in partnership with Cambridge English, the world leader in language assessment, INTO English Language Assessment (IELA) provides a standardised online assessment of all four core language skills throughout your studies. The IELA test is available to you as an additional form of assessment and allows you to choose from a wide range of Higher Education institutions.

"I think the quality of teaching is astonishing, because it is very engaging. They are genuinely interested in your opinion on everything. I would strongly recommend INTO Newcastle University."

Rubinho, Brazil
Studied Academic English at INTO Newcastle University



EN Pre-sessional English

> For students who are academically qualified and hold an offer from Newcastle University but need to improve their English language skills to the level required for their degree.

Course features

- Prepare for your degree programme by learning English language and study skills tailored to the requirements of university study in a 6 or 10 week course.
- Learn from experienced teachers and alongside students who will be studying the same - or similar - subjects as you at the University.
- Study academic vocabulary related to your degree and learn how to give presentations on different areas of academic interest to practise this terminology.
- Get used to living and studying in the UK and adjust to the style, challenges and expectations of the UK higher education system.

Improve your English language level before starting your degree

Start date

June or July

English language entry requirements

From: IELTS 5.5 or equivalent

Age requirement

17 years and above

Class size and hours

Maximum of 18 students
20-21 hours per week on average

SUCCESSFUL INTO ALUMNI



“ Graduating feels amazing! I’ve already got a job in the software department of Deloitte in Belfast, where I will be working on their technology solutions. I am going to miss the university campus and the city. Thank you to everyone for the encouragement and support!

Alina Kazayeva
Completed International Foundation in Physical Sciences and Engineering at INTO Newcastle University and progressed to BSc (Hons) Computer Science at Newcastle University. Now working as a software developer for Deloitte Digital.



“ Studying at INTO and Newcastle University has been one of the highlights in my life. The scholarship given by both of these institutions allowed me to study abroad, expand my horizons and learn different viewpoints.

Kezia, Indonesia
Completed International Foundation in Biological and Biomedical Sciences and progressed to BA (Hons) Psychology and Media and Communications at Newcastle University. Now working as the Chief of Acceleration at Skilvul

“ I learnt so much on the International Year One in Architecture at INTO. The class size was small, so they knew us by name and could help us to progress better.

Kenny, Hong Kong

Completed International Year One in Architecture at INTO Newcastle University and progressed to BA (Hons) Architecture at Newcastle University. Now working as a Part 1 Architectural Assistant at Cousins & Cousins Architects in London.

Dates and prices

The cost of your programme may vary depending on factors including the pathway chosen and programme length. The following guide to costs is based on pricing for the current academic year and provides an indication of the cost of attendance for some of our pathways. For specific cost information, please refer online: www.intostudy.com/newcastle/courses

Estimated cost of attendance based on prices for current academic year 2020-2021

Study length	Tuition	Accommodation	Books and fees	Airport pick up**	Insurance	Total
Academic programmes						
International Foundation (3 term)	£19,795-£20,795	£5,600-£9,348	£380-£780	£35	£357	£26,132-£31,280
International Foundation (4 term)	£23,995-£24,995	£8,000-£12,405	£440-£840	£35	£466	£32,901-£38,706
International Year One (3 term)	£19,795-£20,795	£5,600-£9,348	£380-£780	£35	£357	£26,132-£31,280
International Year One (4 term)	£23,995-£24,995	£8,000-£12,405	£440-£840	£35	£466	£32,901-£38,706
Graduate Diploma (3 term)	£19,795-£20,795	£5,600-£9,348	£380-£780	£35	£357	£26,132-£31,280
Graduate Diploma (4 term)	£23,995-£24,995	£8,000-£12,405	£440-£840	£35	£466	£32,901-£38,706
English language courses						
1 term*	£4,895	£1,669-£2,706	£90	£35	£122	£6,776-£7,813
16 weeks	£7,850	£3,109-£4,779	£140	£35	£145	£11,244-£12,914

Start months and term dates

Academic programmes		Academic English		Pre-sessional English	
June (4 term)	Thu 24 Jun 2021-Fri 10 Jun 2022	July (16 weeks)	Thu 22 Jul 2021-Fri 03 Dec 2021	June (10 weeks)	Thu 24 Jun 2021-Fri 03 Sep 2021
September (3 term)	Mon 20 Sep 2021-Fri 10 Jun 2022	September (1 term)	Mon 20 Sep 2021-Fri 03 Dec 2021	July (6 weeks)	Thu 22 Jul 2021-Fri 03 Sep 2021
September (4 term)	Mon 20 Sep 2021-Fri 09 Sep 2022	January (1 term)	Mon 10 Jan 2022-Fri 25 Mar 2022		
January (3 term)	Mon 10 Jan 2022-Fri 09 Sep 2022	April (1 term)	Thu 07 Apr 2022-Fri 17 Jun 2022		
		June (1 term)	Thu 30 Jun 2022-Fri 09 Sep 2022		

Prices shown are for the current academic year of 01 September 2020 - 31 August 2021 and for indicative purposes only. All students who confirm their offer on or before 31 January 2021 will pay the 2020/2021 price as per their existing offer letter. After 31 January 2021, where tuition fees have increased, all current offers will be reissued and students will receive a new offer with the new 2021/2022 pricing. For full details of term dates, please visit the relevant course page at www.intostudy.com/newcastle/courses

* The price will depend on your start date and length of study. Prices shown are only for one term.
Vacation weeks in between terms are extra and will be charged at the weekly accommodation price.

** Please note airport pickup is optional and is not included in the total.



Apply via your local INTO educational counsellor

If you would like us to put you in contact with one of our counsellors, please contact us.



Apply online

Complete our online application form: apply.intostudy.com



Need some help with your tuition fees?

Check to see if you're eligible for a scholarship: www.intostudy.com/newcastle/scholarships

Connect with us



Discover more online

For students:
www.intostudy.com/newcastle
www.ncl.ac.uk/ipc/courses/

For education counsellors:
partnerportal.intoglobal.com/newcastle



Through innovative partnerships with leading universities, we expand opportunities for higher education, ensuring success and transforming the lives of our students and staff.

INTO GIVING

Working across the globe, INTO Giving supports projects that increase access to education and improve the quality of teaching and learning. For more information visit www.into-giving.com

Contact us

Enquiries and applications:
ukes@intoglobal.com
or +44 1273 876040

Visit the Centre:
into.marketing@newcastle.ac.uk
or +44 191 208 7535

Centre address details:
INTO Newcastle University
The INTO Building
Newcastle University
Newcastle upon Tyne
NE1 7RU
United Kingdom

© INTO Newcastle University LLP, September 2020. Every effort is made to ensure that the information provided in this document is correct at the time of publication. However, from time to time there may be occasions where some of the information has changed since the date of publication. The most up to date information can be found on our website at www.intostudy.com/newcastle - please refer to this before submitting your application. If, in our opinion, we consider that any change has been made which has a material impact on any offer that has been made to you to study with us we will inform you of these changes in writing. The information provided in this document is subject to INTO Newcastle's terms and conditions which can be accessed at www.intostudy.com/newcastle/terms.

INTO Newcastle University LLP, OC325583,
Registered office: One Gloucester Place, Brighton, BN1 4AA

Education provider sponsor number CKTK52NUO

Education counsellor's stamp

