

INTO 



**QUEEN'S
UNIVERSITY
BELFAST**

**RUSSELL
GROUP**

**SHAPING A
BETTER WORLD
SINCE 1845**

**UNIVERSITY PATHWAYS
FOR INTERNATIONAL
STUDENTS
2021-22**

START SOMETHING AMAZING

Welcome to INTO Queen's University Belfast, your pathway to a degree from Queen's University Belfast – a world-leading university with a global reputation. We give international students like you the opportunity to study at a Russell Group university – one of the UK's 24 elite research-intensive institutions.

You'll study a specialist programme designed exclusively for international students and tailored to the requirements of the University. You'll complete your pathway course at our Study Centre in Belfast's vibrant Queen's Quarter – and with access to cutting-edge facilities on campus, you'll become part of the University community from the day you arrive.

Choosing to study abroad is a big decision, but at INTO Queen's University Belfast, we'll give you everything you need to succeed at university and beyond.

CHOOSE #INTOQUEENS AND OPEN UP A LIFETIME OF OPPORTUNITIES.

92% PASSED

Passed: % of students who passed, of those who completed their pathway

83% of which were **ELIGIBLE** to progress

Eligible: % of students eligible to progress to Queen's University Belfast, of those who passed their pathway



15 SUBJECTS IN THE TOP 200 WORLDWIDE

(QS World Rankings by Subject 2020)



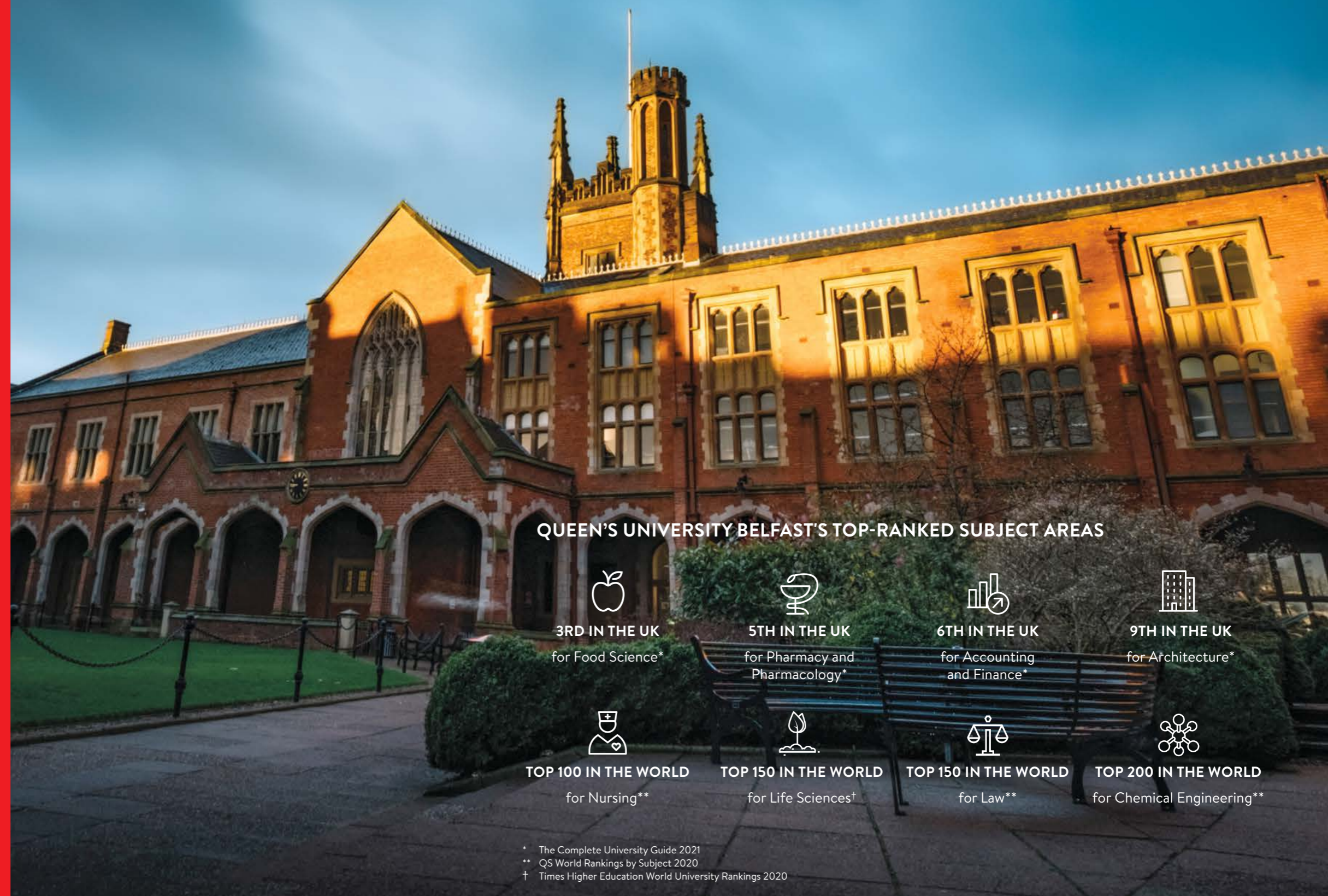
TOP 140 IN THE WORLD FOR GRADUATE PROSPECTS

(QS Graduate Employability Rankings 2020)



LOWEST STUDENT COST OF LIVING IN THE UK

(Which? University 2018)



QUEEN'S UNIVERSITY BELFAST'S TOP-RANKED SUBJECT AREAS



3RD IN THE UK
for Food Science*



5TH IN THE UK
for Pharmacy and Pharmacology*



6TH IN THE UK
for Accounting and Finance*



9TH IN THE UK
for Architecture*



TOP 100 IN THE WORLD
for Nursing**



TOP 150 IN THE WORLD
for Life Sciences†



TOP 150 IN THE WORLD
for Law**



TOP 200 IN THE WORLD
for Chemical Engineering**

* The Complete University Guide 2021

** QS World Rankings by Subject 2020

† Times Higher Education World University Rankings 2020

ABOUT THE UNIVERSITY



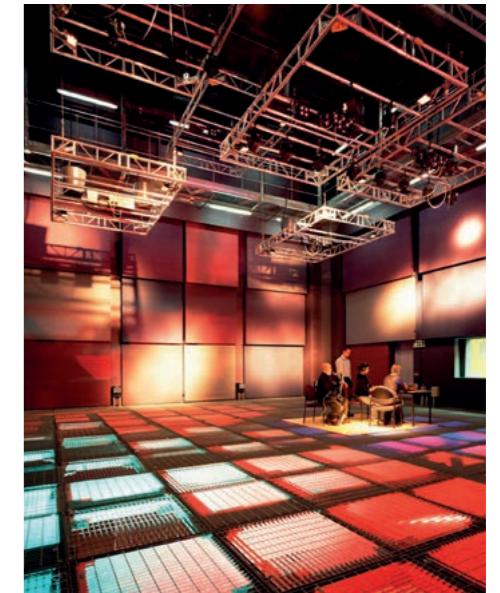
An Architecture student in the School of Natural And Built Environment



An aerial view of the Queen's University Belfast campus

“Queen’s enjoys an enviable reputation for research intensity, for international collaborations and for commercialisation. When coupled with Queen’s reputation for an outstanding and innovative student experience, the University is ideally placed to inspire students and prepare them for successful careers.”

Professor Ian Greer
President and Vice-Chancellor of Queen’s University Belfast



The Sonic Laboratory, a unique multi-functional research lab/concert hall

Start something amazing at Queen’s University Belfast, one of the UK’s leading universities known for its history, research and world-class education. With cutting-edge facilities in an exciting capital city, Queen’s is an incredible place to live, learn and grow.

EXCELLENCE SINCE 1845

Queen’s was founded by Queen Victoria in 1845, making it the 9th oldest university in the UK – and has been shaping a better world ever since. Known as ‘Ireland’s Oxbridge’, Queen’s is part of the Russell Group, meaning that it’s one of the UK’s 24 elite research-intensive universities – combining proven excellence in research and education with a progressive student-centric ethos.

CUTTING-EDGE FACILITIES

Queen’s is dedicated to investing in your future, with a £700 million development currently underway. So far, £350 million has been spent on improving facilities, including:

- the Financial Trading Room with Bloomberg terminals
- the award-winning and technology-rich McClay library
- the Centre for Cancer Research and Cell Biology
- interdisciplinary health and life science research facilities

A GLOBAL COMMUNITY

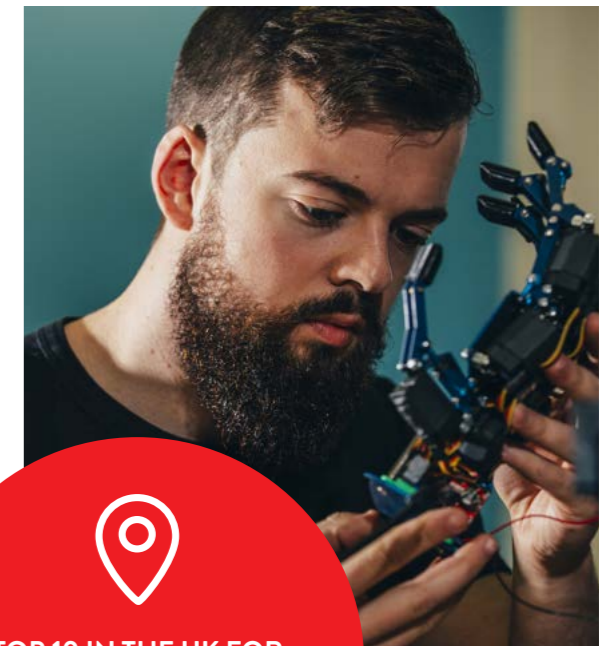
You’ll be joining a diverse and forward-thinking community of staff and students at Queen’s University Belfast. Queen’s is globally connected and networked, with a dedicated International Student Support Team to help you make the most of your studies. With such a global reach, it’s no wonder that the University is expanding its impact on a local, national and worldwide scale.

COST-EFFECTIVE LEARNING

Queen’s is consistently ranked among the top universities in the world, but it offers competitive tuition fees – and Northern Ireland has the lowest student cost of living in the UK (Which? University 2018). Ranking in the top 140 in the world for graduate prospects (QS Graduate Employability Rankings 2020), a career-defining education from Queen’s University Belfast is a wise investment in your future.



The Physical Education Centre building



A student of Engineering

TOP 10 IN THE UK FOR UNIVERSITY FACILITIES
(TIMES HIGHER EDUCATION STUDENT EXPERIENCE SURVEY 2018)

LIFE ON CAMPUS

You'll study your pathway course on the Queen's University campus, an inspiring location with a mix of modern design and historical architecture – not to mention fantastic learning facilities. Surrounded by the buzz of student life and within walking distance of Belfast city centre, it's the perfect setting for your journey at Queen's University Belfast.

YOUR STUDY CENTRE

The INTO Study Centre is close to everything on campus, from the library to the Students' Union – so you'll be immersed in university life from day one. Inside the Centre, you'll find:

- fully-equipped classrooms
- the Learning Resource Centre, with study areas, workstations and IT support
- lots of spaces for reading, studying and group work
- the friendly and helpful Student Support team
- Café Carberry, serving tasty drinks and snacks

SUPPORTING YOU EVERY STEP OF THE WAY

Our Student Services team will help you settle in to life in Belfast. Throughout your time at the Centre, you'll have access to a range of excellent support services, including:

- help opening a bank account and registering with a doctor
- an academic tutor who you can talk to about your course
- a 24-hour emergency telephone number
- visa application support and workshops
- one-on-one progression support, progression events and open days




TOP SPECIALIST FACILITIES

Depending on your pathway you can make use of:



Film, music and theatre studios



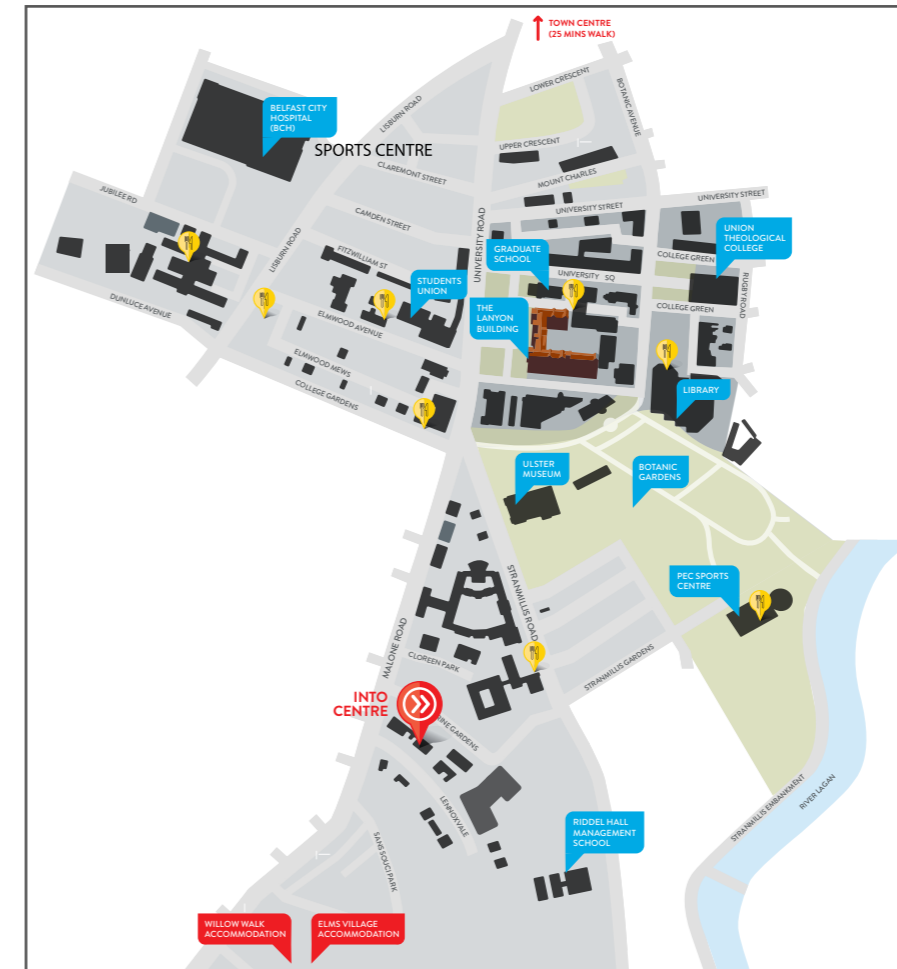
First Derivatives Trading Room



Robotics laboratory



Virtual reality theatre



Students kayaking in the Physical Education Centre



The First Derivatives Trading Room



Group study in the McClay Library



The award-winning McClay Library

GET INVOLVED

There's more to campus life than just studying. From the moment you arrive, you can get involved in exciting social events, giving you the opportunity to get to know your new classmates. We'll help make sure that your first year is smooth, comfortable, and full of lifelong memories. You can enjoy:

- a welcome and induction programme in your first week
- day trips, excursions and celebrations
- 200+ clubs and societies at the Queen's Students' Union

"INTO Queen's is a perfect place to study, as the teachers and staff are so supportive and helpful. The study environment is fun, and students come from different countries and backgrounds – so we can learn more about different cultures and make friends with people from all around the world!"

Jesselyn, Indonesia

Completed International Foundation in Business, Humanities and Social Sciences and progressed to BSc (Hons) Actuarial Science and Risk Management at Queen's University Belfast

DISCOVER BELFAST

A modern capital city with the warm and friendly vibe of a small community, Belfast is a wonderful place to live and study. Its buzzing social scene, cultural attractions and historic architecture are all packed into a compact city that's easy and safe to explore.

SOCIAL AND CULTURAL SCENE

Friendly pubs and cool clubs give Belfast its reputation as one of Europe's most sociable cities, and world-class attractions document its rich history and culture. You can discover:

- the Titanic Belfast museum
- Belfast City Hall's ornate architecture
- beautiful Botanic Gardens
- the Ulster Museum of Irish history
- live music in the Cathedral Quarter
- Dock Market, for the best of the city's art and independent fashion

COST-EFFECTIVE LIVING

Your money goes further in Belfast, as Northern Ireland has the lowest student cost of living in the UK – and is more than £5,000 per year cheaper than London! (Which? University 2018)



TOP WORLD CUISINE

Thanks to a vibrant international community, you'll find tasty and authentic global cuisine across the city – including a delicious selection on Botanic Avenue, just a 10–15 minute walk from the INTO Centre. Why not try:

- Boojum, for tasty Mexican burritos
- Botanic Spice, for rich Indian dishes
- Sakura, for fresh Japanese cuisine
- Maggie Mays, for a true taste of Northern Ireland

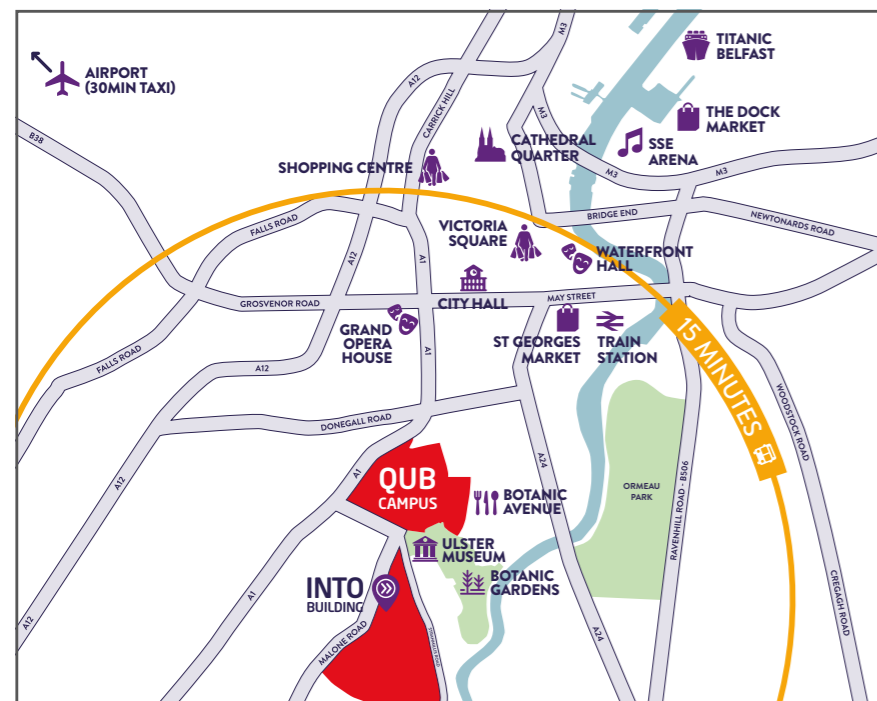
GRADUATE EMPLOYABILITY

Belfast is home to global companies in a range of industries, giving you excellent opportunities for employment when you graduate:

- Bombardier Inc.
- Almac
- PricewaterhouseCoopers
- Citigroup Inc.

EXPLORING THE COUNTRY

As the capital of Northern Ireland, Belfast is a hub for connections. Take the coach along the beautiful coast to the Giant's Causeway, a breath-taking landscape of dramatic cliffs shrouded in myth and legend – or head to Hillsborough Castle where the Royal Family stay when they visit the area. If you're a fan of Game of Thrones, Mourne Wall is a must-see – it was featured in the series!



Belfast City Hall



The Giant's Causeway

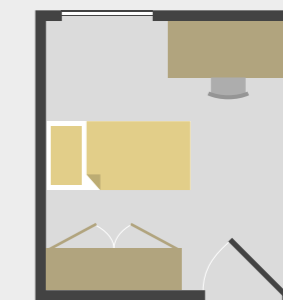
HOME FROM HOME

With a choice of student residences close to the Centre, it's easy for you to find the perfect place to stay. Independent living in an international community is the perfect combination when you study overseas.



WILLOW WALK

A comfortable, private double room which is your space to look after and enjoy. You'll share a bathroom and kitchen with other students. There's also a lounge area with a TV, perfect for socialising.



- 10 MIN Walk to INTO Centre
- Laundry facilities
- Wi-Fi
- On-site staff

ELMS BT1, BT2 AND BT9*

Enjoy living in this modern village-style en suite residence with a shared kitchen. At 'The Treehouse' in the heart of the village you can find a restaurant, bar, shop and a community area for socialising and games. Everything you need in one place!



- 10 MIN Walk to INTO Centre
- Laundry facilities
- Wi-Fi
- On-site staff
- En suite bathroom

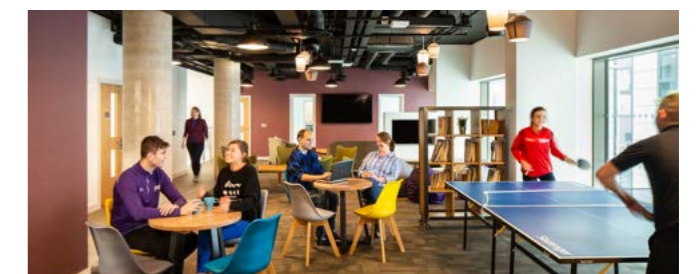
Example room layout and information

CATERING

Accommodation is self-catered and you can add credit to a 'Queen's Easy Pay' card to buy snacks, drinks and meals sold around campus.

SUPPORTING YOU

In the residences you'll find 24/7 security staff and resident life co-ordinators who are there to keep you safe and provide excellent support. If you are under 18, we offer extra support from Residence Assistants.



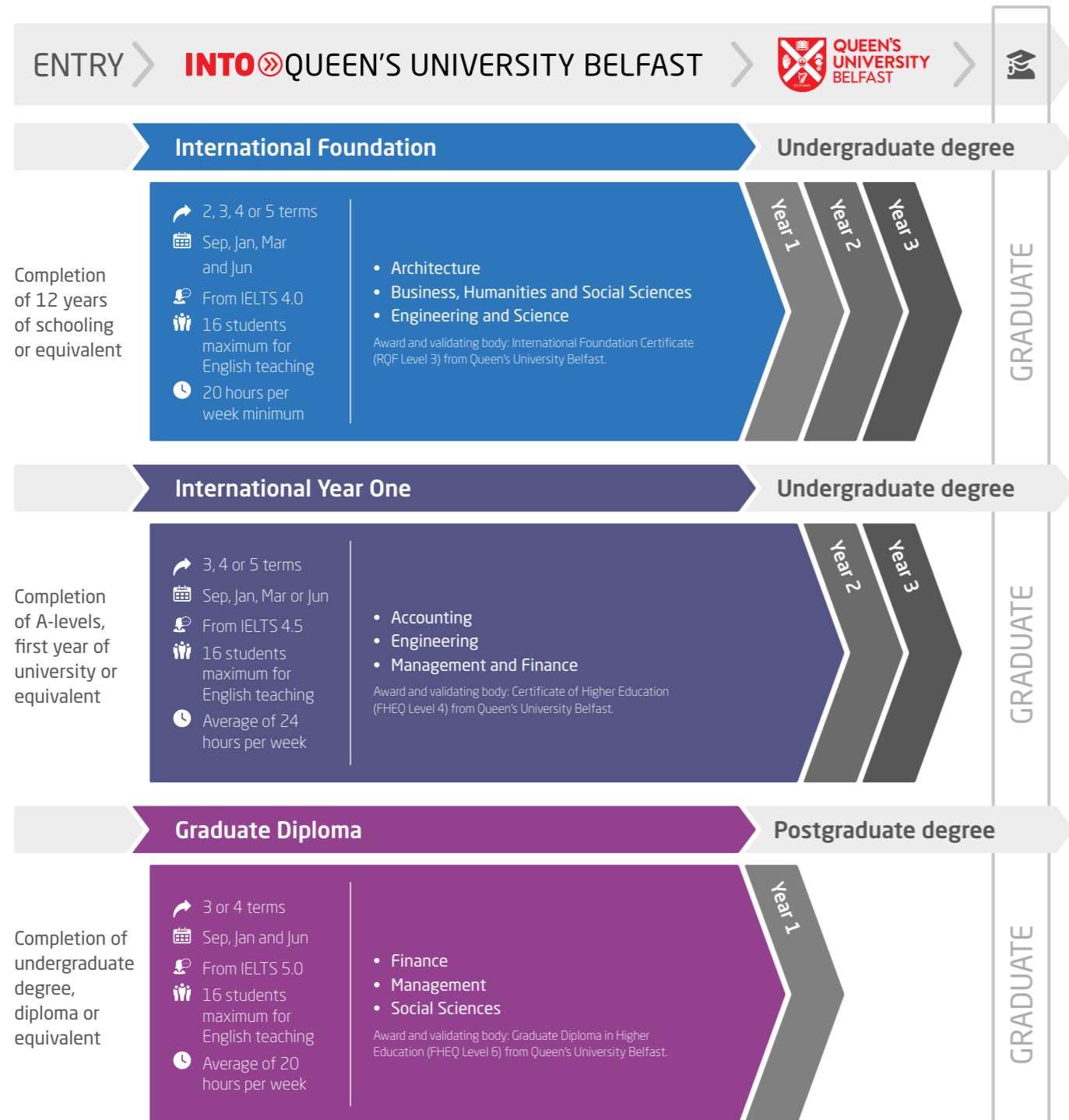
ACCOMMODATION GUARANTEE

When you progress you will be guaranteed student residence accommodation during the first year of your degree at Queen's.

INTO Queen's University Belfast aims to provide the accommodation requested. However, there may be occasions when INTO Queen's University Belfast is unable to provide the requested accommodation and reserves the right to offer an alternative type of accommodation instead. The price for any alternative accommodation may differ and will be confirmed to students at the time of their offer.

Choosing your course

Prepare for your university degree with our tailored, academic pathway programmes designed in partnership with Queen's University Belfast. You'll benefit from university-style teaching for subject-based modules and high academic standards. Then, when it comes to progressing to your chosen degree, we'll support you with your university application.



Please note that course length and start month options may vary depending on the pathway chosen. Please visit www.intostudy.com/queens/courses for full information.

The UK's quality assurance accrediting body for higher education

Undergraduate Degree with International Year One

- > Combine your International Year One and undergraduate Engineering degree in one study plan.
- > Apply for one CAS for the full duration of your study plan.

Modules

You will need to earn 120 credits from the following module options to successfully complete Year 1 of your study plan:

Core modules

- English Language and Study Skills (20 credits)
- Engineering Mathematics 1 (10 credits)
- Engineering Mathematics 2 (10 credits)

Specialist modules

The table below provides information about the modules you will need to study based on the degree option chosen.

Specialist Modules (80 credits - all modules are 10 credits)	Degree						
	Aerospace Engineering BEng (Hons)	Chemical Engineering BEng (Hons)	Civil Engineering BEng (Hons)	Computer Science BEng (Hons)	Electrical and Electronic Engineering BEng (Hons)	Mechanical Engineering BEng (Hons)	Product Design Engineering BEng (Hons)
Aerospace Principles	•						
Basic Chemistry 1		•					
Basic Chemistry 2		•					
Computer Programming				•	•		
Communications				•	•		
Circuit Principles 1				•	•		
Circuit Principles 2				•	•		
Civil Engineering Principles			•				
Drawing and Design	•	•	•			•	•
Digital Systems Design				•	•		
Dynamics	•					•	•
Electrical and Electronic Engineering						•	•
Electronic Materials and Devices				•	•		
Electrical Power and Machines				•	•		
Engineering Design and Practise				•	•		
Fluid Mechanics	•	•	•			•	•
Geotechnics			•				
Heat and Mass Transfer		•					
Introduction to Chemical Engineering		•					
Materials and Manufacture	•	•	•			•	•
Mechanical Principles	•		•			•	•
Structural and Stress Analysis	•		•			•	•
Surveying			•				
Thermodynamics	•	•				•	•

• Semester 1 • Semester 2

Combine International Year One study with a Queen's University Belfast degree

Year 1 of study plan

Start date

Sep or Jan

English language entry requirements*

IELTS 5.5 (with a minimum of 5.5 in each subskill) or equivalent

Age requirement

16 years and above**

* If you have not decided on your degree or you do not meet the minimum English language entry requirements, you may qualify for International Year One in Engineering. See page 14 for details.

** All students commencing courses on a published September start date must be 17 years old by 31 December of that calendar year. For all other start dates, students must be 17 years old on the published start date of the programme.

Study an Engineering degree at Queen's University Belfast:

Top 10

in the UK for Electronic and Electrical Engineering

(The Times and The Sunday Times Good University Guide 2020)

Top 200

in the world for Chemical Engineering

(QS World University Rankings by Subject 2020)

Top 200

in the world for Civil and Structural Engineering

(QS World University Rankings by Subject 2020)

Progress to Year 1 of an undergraduate degree at Queen's University Belfast

Start date

3 term: Sep or Jan
4 term: Jun or Sep
5 term: Jun or Mar

English language entry requirements*

3 term: IELTS 5.0 (with a minimum of 5.0 in writing and 4.5 in all other subskills) or equivalent
4 term: IELTS 4.5 (with a minimum of 4.5 in writing and 4.0 in all other subskills) or equivalent
5 term: IELTS 4.0 (with a minimum of 4.0 in all subskills) or equivalent

Age requirement

16 years and above

Start date

3 term: Sep or Jan
4 term: Jun or Sep
5 term: Jun or Mar

English language entry requirements*

3 term: IELTS 5.0 (with a minimum of 5.0 in writing and 4.5 in all other subskills) or equivalent
4 term: IELTS 4.5 (with a minimum of 4.5 in writing and 4.0 in all other subskills) or equivalent
5 term: IELTS 4.0 (with a minimum of 4.0 in all subskills) or equivalent

Age requirement

16 years and above

Start date

2 term: Mar
3 term: Sep or Jan
4 term: Jun or Sep
5 term: Jun or Mar

English language entry requirements*

2 term: IELTS 6.0 (with a minimum of 5.5 in all subskills) or equivalent*
3 term: IELTS 5.0 (with a minimum of 5.0 in writing and 4.5 in all other subskills) or equivalent
4 term: IELTS 4.5 (with a minimum of 4.5 in writing and 4.0 in all other subskills) or equivalent
5 term: IELTS 4.0 (with a minimum of 4.0 in all subskills) or equivalent

Age requirement

16 years and above

* If you do not meet the minimum English language requirements you should apply for our Academic English course. See page 18 for more information.

International Foundation

Architecture - IFA

- > Draw and make detailed models in workshop-style classes.
- > Learn from a qualified and experienced architect.

What will I study?

You will need to earn 120 credits from the following module options to successfully complete your pathway programme:

Core modules

English Language and Study Skills (30 credits)
Practical Skills for Art Portfolio (30 credits)
Principles of Architectural Design and Practice (30 credits)

Plus one of the following modules:

Foundation Politics and International Relations (30 credits)
Foundation Mathematics for Business, Humanities and Social Sciences (30 credits)

Progress to **2** degrees. Find out more online at www.intostudy.com/queens/IFA

Business, Humanities and Social Sciences - IFBHSS

- > Progress to a wide range of degrees, from Film Production to Business Management.
- > Learn outside the classroom through interactive field trips, which have previously included visits to the Law Courts and Parliament Buildings.

What will I study?

You will need to earn 120 credits from the following modules to successfully complete your pathway programme:

English Language and Study Skills (30 credits)
Foundation Business Studies (30 credits)
Foundation Economics (30 credits)
Foundation Mathematics for Business, Humanities and Social Sciences (30 credits)

Foundation Mathematics for Engineering and Science (30 credits)
Foundation Politics and International Relations (30 credits)
Further Mathematics for Engineering and Science (30 credits)

Progress to **29** degrees. Find out more online at www.intostudy.com/queens/IFBHSS

Engineering and Science - IFPES

- > Gain practical experience in the University's fully equipped science labs.
- > A 2-term accelerated programme is available for applicants with a higher English language level.

What will I study?

You will need to earn 120 credits from the following module options to successfully complete your pathway programme:

English Language and Study Skills (30 credits)
Foundation Mathematics for Engineering and Science (30 credits)

Plus two of the following options:
Foundation Biology (30 credits)
Foundation Chemistry (30 credits)
Foundation Physics (30 credits)
Further Mathematics for Engineering and Science (30 credits)

Progress to **102** degrees. Find out more online at www.intostudy.com/queens/IFPES

International Foundation

There are more than 170 International Foundation progression degree options at Queen's University Belfast. Below is a selection of some of the most popular. See page 12 for more details on the pathways.

Degree	Pathway(s)	Specific requirements	English level
Accounting BSc (Hons)	IFBHSS	ABB and GCSE Mathematics grade 6/B or equivalent	B with a minimum of D in each component
Actuarial Science and Risk Management BSc (Hons)	IFBHSS	AAA	B with a minimum of D in each component
Aerospace Engineering BEng (Hons)* 	IFPES	BBC including Mathematics and at least one from Physics (preferred), Biology, Chemistry or Further Mathematics, and GCSE Physics grade 4/C or equivalent	C with a minimum of D in each component
Anthropology BA (Hons)	IFBHSS	BBC	B with a minimum of D in each component
Applied Mathematics and Physics BSc (Hons)*	IFPES	ABC	C with a minimum of D in each component
Architecture BSc (Hons)	IFA	ABB and GCSE Mathematics grade 4/C or equivalent, plus evidence of artistic ability, and must pass an interview with Queen's faculty academics	B with a minimum of C in Speaking and Listening and D in Reading and Writing
Audio Engineering BSc (Hons)	IFPES	BBB including Mathematics and at least one from Physics (preferred), Biology, Chemistry or Further Mathematics, and GCSE Physics grade 4/C or equivalent	B with a minimum of D in each component
Biochemistry BSc (Hons) 	IFPES	BBB including Chemistry and at least one from Biology (preferred), Mathematics or Physics, and GCSE Biology and Mathematics grade 4/C or equivalent	B with a minimum of D in each component
Biological Sciences BSc (Hons) 	IFPES	BBB	B with a minimum of D in each component
Biomedical Science BSc (Hons)	IFPES	ABB	B with a minimum of D in each component
Broadcast Production BA (Hons)	IFBHSS	BBB	B with a minimum of D in each component
Business Economics BSc (Hons)	IFBHSS	BBB and GCSE Mathematics grade 6/B or equivalent	B with a minimum of D in each component
Business Information Technology BSc (Hons) 	IFBHSS or IFPES	BBB	B with a minimum of D in each component
Business Management with Placement BSc (Hons)	IFBHSS	BBB and GCSE Mathematics grade 6/B or equivalent	B with a minimum of D in each component
Chemical Engineering BEng (Hons)* 	IFPES	BBC with B in Mathematics and at least one from Biology, Chemistry or Physics, and GCSE Chemistry and Physics grade 4/C or equivalent	C with a minimum of D in each component
Chemistry BSc (Hons)* 	IFPES	BBC with B in Chemistry and a second Science subject, and GCSE Mathematics grade 4/C or equivalent	C with a minimum of D in each component
Civil Engineering BEng (Hons)* 	IFPES	BBC including Mathematics and at least one from Biology, Chemistry, or Physics, and GCSE Physics grade 4/C or equivalent	C with a minimum of D in each component
Computer Science BSc (Hons)* 	IFPES	BBC with B in Mathematics, or BBB including Physics or Chemistry, and GCSE Mathematics grade 4/C or equivalent	C with a minimum of D in each component
Computing and Information Technology BSc (Hons) 	IFPES	BBB and GCSE Mathematics grade 4/C or equivalent	C with a minimum of D in each component
Criminology BA (Hons)	IFBHSS	BBB	B with a minimum of D in each component
Economics BSc (Hons)	IFBHSS	BBB and GCSE Mathematics grade 6/B or equivalent (grade A required if Mathematics is not taken as an International Foundation module)	B with a minimum of D in each component
Economics and Accounting BSc (Hons)	IFBHSS	BBB and GCSE grade 6/B or equivalent	B with a minimum of D in each component
Economics with Finance BSc (Hons)	IFBHSS	BBB and GCSE Mathematics grade 6/B or equivalent (grade A required if Mathematics is not taken as an International Foundation module)	B with a minimum of D in each component
Electrical and Electronic Engineering BEng (Hons)* 	IFPES	BBC with B in Mathematics and at least one from Physics (preferred), Biology, Chemistry or Further Mathematics, and GCSE Physics grade 4/C or equivalent	C with a minimum of D in each component
Environmental and Civil Engineering MEng (Hons)	IFPES	ABB with A in Mathematics, B in Biology, Chemistry or Physics, and GCSE Physics grade 6/B or equivalent	C with a minimum of D in each component
Environmental Management BSc (Hons)	IFPES	BBB including at least two from Biology, Chemistry and Geography and GCSE Mathematics grade 4/C or equivalent	B with a minimum of D in each component
European Planning MPlan	IFPES	BBB	B with a minimum of D in each component
Film and Theatre Making BA (Hons)	IFBHSS	BBB	B with a minimum of D in each component
Film Studies and Production BA (Hons)	IFBHSS	BBC	B with a minimum of D in each component
Finance with a Year in Industry BSc (Hons)	IFBHSS	ABB and GCSE Mathematics grade 6/B or equivalent	B with a minimum of D in each component
Food Quality, Safety and Nutrition BSc (Hons) 	IFPES	BBB	B with a minimum of D in each component
Human Biology BSc (Hons)	IFPES	ABB	B with a minimum of D in each component
International Politics and Conflict Studies BA (Hons)	IFBHSS	BBB	B with a minimum of D in each component
Law LLB (Hons)	IFBHSS	ABB	B with a minimum of D in each component
Mechanical Engineering BEng (Hons)	IFPES	BBC with B in Mathematics and at least one from Physics (preferred), Biology, Chemistry or Further Mathematics, and GCSE Physics grade 4/C or equivalent	C with a minimum of D in each component
Pharmacy MPharm (Hons)	IFPES	AAB including Chemistry and two from Biology (preferred), Mathematics or Physics and GCSE Biology and Mathematics grade 4/C or equivalent	B with a minimum of C in each component
Product Design Engineering BEng (Hons)	IFPES	BBC (Mathematics) and at least one from Physics, Biology, Chemistry or Further Mathematics) and GCSE Physics grade 4/C or equivalent	C with a minimum of D in each component
Software Engineering BEng (Hons)	IFPES	BBC including Mathematics or BBC including Physics or Chemistry and GCSE Mathematics grade C or equivalent	C with a minimum of D in each component
Structural Engineering with Architecture MEng (Hons)	IFPES	ABB	C with a minimum of D in each component

Find comprehensive information on all academic pathway programmes, degree options and progression requirements at: www.intostudy.com/queens/courses

 Degree option with a placement also available.

Progress to Year 2 of an undergraduate degree at Queen's University Belfast

Start date

3 term: Sep or Jan
4 term: Jun or Sep
5 term: Jun or Mar

English language entry requirements*

3 term: IELTS 5.5 (with a minimum of 5.5 in reading and writing and 5.0 in all other subskills) or equivalent

4 term: IELTS 5.0 (with a minimum of 5.0 in reading and writing and 4.5 in all other subskills) or equivalent

5 term: IELTS 4.5 (with a minimum of 4.5 in all other subskills) or equivalent

To combine your International Year One in Engineering and Undergraduate Degree in one study plan, see page 11.

Age requirement

16 years and above

* If you do not meet the minimum English language requirements you should apply for our Academic English course. See page 18 for more information.

Prepare to progress to a degree at Queen's University Belfast:

 6th

in the UK for Accounting and Finance

(The Complete University Guide 2021)

 Top 200

in the world for Chemical Engineering

(QS World University Rankings by Subject 2020)

 94%

student satisfaction for Finance

(National Student Survey 2019)

International Year One

Accounting - IYOA

- > Develop experience analysing statistics and writing detailed financial reports.
- > Learn how to use specialist accounting software.

What will I study?

You will need to earn 120 credits from the following modules to successfully complete your pathway programme:

English Language and Study Skills (20 credits)	Introduction to Management
Accounting Information Systems (10 credits)	Accounting (20 credits)
Introduction to Legal Studies and Basic Contract Law (20 credits)	Statistical Methods for Business (10 credits)
	Introduction to Financial Accounting (20 credits)
	Principles of Economics (20 credits)

Progress to **2** degrees. Find out more online at www.intostudy.com/queens/IYOA

Engineering - IYOE

- > Choose from a number of specialist Engineering sub-pathways.
- > Gain hands-on experience through laboratory work and learn from PhD level subject lecturers.

What will I study?

You will need to earn 120 credits from the following module options to successfully complete your pathway programme:

Core modules	8 specialist modules for:
English Language and Study Skills (20 credits)	Aerospace Engineering, Chemical Engineering,
Engineering Mathematics 1 (10 credits)	Civil Engineering, Electrical and Electronic
Engineering Mathematics 2 (10 credits)	Engineering and Mechanical Engineering

Progress to **39** degrees. Find out more online at www.intostudy.com/queens/IYOE

Management and Finance - IYOMF

- > Learn to analyse case studies and discuss current economic affairs.
- > Develop key skills in business reporting, presentation and data analysis.

What will I study?

You will need to earn 120 credits from the following module options to successfully complete your pathway programme:

Core modules	Specialist modules
English Language and Study Skills (20 credits)	Financial Institute and Markets (20 credits)
Statistical Methods for Business (10 credits)	Mathematics for Finance (20 credits)
Principles of Economics (20 credits)	Price Theory (10 credits)
Introduction to Financial Management and Accounting (20 credits)	Management and Organisation: Theory and Practice (20 credits)
	The Business Environment (20 credits)
	Marketing (10 credits)

Progress to **5** degrees. Find out more online at www.intostudy.com/queens/IYOMF

International Year One

There are more than 40 International Year One progression degree options at Queen's University Belfast. See page 14 for more details on the pathways.

Degree	Pathway(s)	Specific requirements	English level
Accounting BSc (Hons)	IYOA	50% overall average in academic modules. A minimum of 50% in Mathematics for Statistics and Business, Introduction to Financial Accounting, Introduction to Management Accounting, and Introduction to Legal Study and Basic Contract Law	B with a minimum of D in each component
Aerospace Engineering BEng (Hons)** †	IYOE	A pass with Commendation with a minimum average of 60% and passes in all 10 modules	C with a minimum of D in each component
Business Economics BSc (Hons)	IYOMF	50% overall average in academic modules. A minimum of 50% in Management and Organisation: Theory and Practice, Principles of Economics, and The Business Environment, and passes in all other modules	B with a minimum of D in each component
Business Management with Placement BSc (Hons)	IYOMF	50% overall average in academic modules. A minimum of 50% in Management and Organisation: Theory and Practice, Principles of Economics, and The Business Environment; and passes in all other modules	B with a minimum of D in each component
Chemical Engineering BEng (Hons)** †	IYOE	A pass with Commendation with a minimum average of 60% and passes in all 10 modules	C with a minimum of D in each component
Civil Engineering BEng (Hons)** †	IYOE	A pass with Commendation with a minimum average of 60% and passes in all 10 modules	C with a minimum of D in each component
Computer Science BEng (Hons)** †	IYOE	A pass with Commendation with a minimum average of 60% and passes in all 10 modules	C with a minimum of D in each component
Computing and Information Technology BSc (Hons)	IYOE	A pass with Commendation with a minimum average of 60% and passes in all 10 modules	C with a minimum of D in each component
Economics BSc (Hons)	IYOMF	50% overall average in academic modules. A minimum of 50% in Principles of Economics; Financial Institutions and Markets; and Mathematics for Finance and Economics, and passes in all other modules	B with a minimum of D in each component
Economics and Accounting BSc (Hons)	IYOA	50% overall average in academic modules. A minimum of 50% in Mathematics for Statistics and Business, Introduction to Financial Accounting, Introduction to Management Accounting, and Introduction to Legal Study and Basic Contract Law	B with a minimum of D in each component
Economics with Finance BSc (Hons)	IYOMF	50% overall average in academic modules. A minimum of 50% in Principles of Economics; Financial Institutions and Markets; and Mathematics for Finance and Economics, and passes in all other modules	B with a minimum of D in each component
Electrical and Electronic Engineering BEng (Hons)** †	IYOE	A pass with Commendation with a minimum average of 60% and passes in all 10 modules	C with a minimum of D in each component
Environmental and Civil Engineering MEng (Hons)** †	IYOE	A pass with High Commendation with a minimum average of 70% and passes in all 10 modules	C with a minimum of D in each component
Finance with a Year in Industry BSc (Hons)	IYMF	50% overall average in academic modules	B with a minimum of D in each component
Mechanical Engineering BEng (Hons)** †	IYOE	A pass with Commendation with a minimum average of 60% and passes in all 10 modules	C with a minimum of D in each component
Product Design Engineering Engineering BEng (Hons)* †	IYOE	A pass with Commendation with a minimum average of 60% and passes in all 10 modules	C with a minimum of D in each component
Software and Electronic Systems Engineering BEng (Hons)* †	IYOE	A pass with Commendation with a minimum average of 60% and passes in all 10 modules	C with a minimum of D in each component
Software Engineering BEng (Hons)** †	IYOE	A pass with Commendation with a minimum average of 60% and passes in all 10 modules	C with a minimum of D in each component
Structural Engineering MEng (Hons)	IYOE	A pass with High Commendation with a minimum average of 70% and passes in all 10 modules	C with a minimum of D in each component

Please note: English level and academic progression requirements are correct to the best of our knowledge at the time of going to print. In some circumstances these may change throughout the year - please visit www.intostudy.com/queens for the most up to date information. Progression requirements, including English level and final grade, may be higher for degrees with an integrated Master's.

* Master's option available. † International Year One with Undergraduate Degree is also available.

† Degree option with a placement also available.

Progress to a postgraduate degree at Queen's University Belfast

Start date

3 term: Sep or Jan
4 term: Jun or Sep

English language entry requirements*

3 term: IELTS 5.5 (with a minimum of 5.5 in all subskills) or equivalent

4 term: IELTS 5.0 (with a minimum of 5.0 in all subskills) or equivalent

Please note that in addition to the UKVI IELTS, INTO is able to accept other English language qualifications. For more information on accepted qualifications please see: www.intostudy.com/self-alternatives

Age requirement

16 years and above

* If you do not meet the minimum English language requirements you should apply for our Academic English course. See page 18 for more information.

Prepare to progress to a degree at Queen's University Belfast:

6th

in the UK for Accounting and Finance

(The Complete University Guide 2021)

Top 150

in the world for Law

(QS World University Rankings by Subject 2020)

Top 200

in the world for History

(QS World University Rankings by Subject 2020)

Graduate Diploma

Finance - GDF

- > Study real-world international business case studies.
- > Attend guest lectures at Queen's for access to the latest developments in your subject.

What will I study?

You will need to earn 120 credits from the following modules to successfully complete your pathway programme:

Accounting for Financial Management (20 credits)	Financial Econometrics (20 credits)
English Language Study Skills (40 credits)	Financial Market Theory and Investment Analysis (20 credits)
Financial and Economic Strategy (20 credits)	

Progress to **6** degrees. Find out more online at www.intostudy.com/queens/GDF

Management - GDM

- > Analyse and interpret the practices of global businesses.
- > Continue learning outside of the classroom through interactive field trips.

What will I study?

You will need to earn 120 credits from the following modules to successfully complete your pathway programme:

Business in an International Context (20 credits)	Empirical Enquiry and Critical Thought (20 credits)
Business Management - Environment, Theory and Practice (20 credits)	English Language Study Skills (40 credits)
	Exploring Culture (20 credits)

Progress to **19** degrees. Find out more online at www.intostudy.com/queens/GDM

Social Sciences - GDSS

- > Progress to a range of postgraduate degrees in subjects such as Law, Education, Leadership, Arts Management and Translation/Interpreting.
- > Keep up-to-date with the latest developments in Social Science by attending guest lectures at the University.

What will I study?

You will need to earn 120 credits from the following modules to successfully complete your pathway programme:

Empirical Enquiry and Critical Thought (20 credits)	Exploring Culture (20 credits)
English Language Study Skills (40 credits)	Foundations of Social Science (20 credits)
	Research Design (20 credits)

Progress to **16** degrees. Find out more online at www.intostudy.com/queens/GDSS

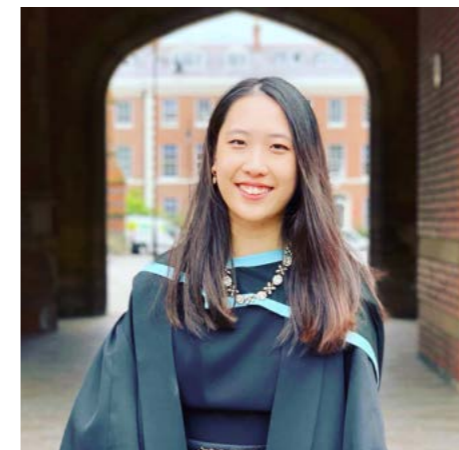
Graduate Diploma

There are 32 Graduate Diploma progression degree options at Queen's University Belfast. See page 16 for more details on the pathways.

Degree	Pathway(s)	Specific requirements	English level
Accounting and Finance MSc	GDF	60% overall in academic modules, with no module score less than 50%	B with a minimum of D in each component
Arts Management MA	GDM or GDSS	60% overall in academic modules, with no module score less than 50%	B with a minimum of D in each component
Autism Spectrum Disorders MSc	GDM	60% overall in academic modules, with no module score less than 50%	B with a minimum of D in each component
Business Administration MBA	GDF or GDM	60% overall in academic modules, with no module score less than 50%. Applicants must also have a minimum of 5 years' relevant post-graduation employment experience	B with a minimum of D in each component
Business Analytics MSc	GDF	60% overall in academic modules, with no module score less than 50%	B with a minimum of D in each component
Children's Rights MSc	GDM or GDSS	60% overall in academic modules, with no module score less than 50%	B with a minimum of D in each component
Conflict Transformation and Social Justice MA	GDSS	60% overall in academic modules, with no module score less than 50%	B with a minimum of D in each component
Construction and Project Management MSc	GDF or GDM	60% overall in academic modules, with no module score less than 50%	B with a minimum of D in each component
Criminology and Criminal Justice LLM	GDM or GDSS	60% overall in academic modules, with no module score less than 50%	B with a minimum of D in each component
Economics MSc	GDF	60% overall in academic modules, with no module score less than 50%	B with a minimum of D in each component
Educational Leadership MSc	GDM or GDSS	60% overall in academic modules, with no module score less than 50%	B with a minimum of D in each component
Film MA	GDSS	60% overall in academic modules, with no module score less than 50%	B with a minimum of D in each component
Finance MSc	GDF	60% overall in academic modules, with no module score less than 50%	B with a minimum of D in each component
History MA	GDSS	60% overall in academic modules, with no module score less than 50%	B with a minimum of D in each component
Human Resources Management MSc	GDM	60% overall in academic modules, with no module score less than 50%	B with a minimum of D in each component
Human Rights & Criminal Justice LLM	GDM or GDSS	60% overall in academic modules, with no module score less than 50%	B with a minimum of D in each component
Human Rights Law LLM	GDM or GDSS	60% overall in academic modules, with no module score less than 50%	B with a minimum of D in each component
Inclusion and Special Needs Education MEd	GDM or GDSS	60% overall in academic modules, with no module score less than 50%	B with a minimum of D in each component
International Business MSc	GDM or GDSS	60% overall in academic modules, with no module score less than 50%	B with a minimum of D in each component
International Business Law LLM	GDM or GDSS	60% overall in academic modules, with no module score less than 50%	B with a minimum of D in each component
International Relations MA	GDSS	60% overall in academic modules, with no module score less than 50%	B with a minimum of D in each component
Interpreting MA	GDSS	60% overall in academic modules, with no module score less than 50%	B with a minimum of D in each component
Law LLM	GDSS	60% overall in academic modules, with no module score less than 50%	B with a minimum of D in each component
Management MSc	GDM	60% overall in academic modules, with no module score less than 50%	B with a minimum of D in each component
Marketing MSc	GDM	60% overall in academic modules, with no module score less than 50%	B with a minimum of D in each component
Politics MA	GDSS	60% overall in academic modules, with no module score less than 50%	B with a minimum of D in each component
Psychological Science MSc	GDM	60% overall in academic modules, with no module score less than 50%	B with a minimum of D in each component
Risk and Investment Management MSc	GDF	60% overall in academic modules, with no module score less than 50%	B with a minimum of D in each component
Translation MA	GDSS	60% overall in academic modules, with no module score less than 50%	B with a minimum of D in each component
Violence Terrorism and Security MA	GDSS	60% overall in academic modules, with no module score less than 50%	B with a minimum of D in each component
Youth Justice MSc	GDSS	60% overall in academic modules, with no module score less than 50%	B with a minimum of D in each component
Master's in Law MLAW	GDSS	60% overall in academic modules, with no module score less than 50%	B with a minimum of D in each component

^P Degree option with a placement also available.

Please note: English level and academic progression requirements are correct to the best of our knowledge at the time of going to print. In some circumstances these may change throughout the year - please visit www.intostudy.com/queens for the most up to date information.



"Studying at Queen's has been a great experience - it is a great place for education in the UK. Be strong, persevere and believe you will reach your goals one day. Studying Finance has enabled me to be the person I want to be. My dream is to become a Financial Analyst and work in an investment bank."

Yoke, Malaysia
Completed Graduate Diploma in Finance and progressed to MSc Finance at Queen's University Belfast

Improve your English language skills to prepare for further academic study

Start date

16 week: Aug
1-4 terms: Sep, Jan, Mar or Jun

English language entry requirements

From: IELTS 3.0 or equivalent*

Age requirement

16 years and above

Class size and hours

Typically 16 students per class
30 learning hours per week, with
25 hours of face-to-face contact

Improve your English language skills to the level required for your chosen degree

Start date

10 weeks: Jun
6 weeks: Jul
4 weeks: Aug

English language entry requirements

From IELTS 5.0 or equivalent*

Age requirement

17 years and above

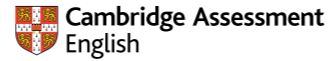
Class hours

20 hours per week on average

* Depending on course length and progression programme requirements.

English courses

EN Academic English



> For students who need to increase their IELTS level in order to progress to university. This intensive course offers rapid progress of up to one IELTS band per term.

Course features

- You will learn through face-to-face teaching and online learning to communicate effectively in English and improve your reading, writing, speaking and listening skills.
- A diverse social programme and effective academic content will help you to develop the fluency and confidence you need to progress to further study.
- Developed in partnership with Cambridge English, the world leader in language assessment, INTO English Language Assessment (IELA) provides a standardised online assessment of all four core language skills throughout your studies. The IELA test is available to you as an additional form of assessment and allows you to choose from a wide range of Higher Education institutions.
- Access INTO's interactive online learning platform, MyINTO, outside of class to practise your English language skills, complete tasks and engage with classmates.

EN Pre-sessional English

> For students who are academically qualified and hold an offer from Queen's University Belfast but need to improve their English language skills to the level required for their degree.

Course features

- Prepare for your degree programme by learning English language and study skills tailored to the requirements of university study in a 4 week course.
- Learn from experienced teachers and alongside students who will be studying the same - or similar - subjects as you at the University.
- Study academic vocabulary related to your degree and learn how to give presentations on different areas of academic interest to practise this terminology.
- Get used to living and studying in the UK and adjust to the style, challenges and expectations of the UK higher education system.



All our English language courses at INTO Queen's University Belfast have received accreditation from the British Council.

Affordable education at a world-class university

Save up to **£8,000** on your tuition fees with generous international scholarships at Queen's University Belfast.

At INTO Queen's University Belfast, we offer pathway scholarships of up to **£4,000** to students who are willing to take part in our Student Ambassador programme. Then, when you progress to your degree at Queen's, you'll receive a guaranteed scholarship of **£2,000-£3,000** towards your tuition fees - and a further 10% discount if you pay in full before the deadline.

As well as offering excellent scholarships to international students, Queen's is located in Belfast - one of the UK's most cost-effective cities for students.

Northern Ireland has the **lowest student cost of living** in the UK

(Which? University 2018)

Belfast has the **lowest monthly student rent** in the UK

(RBS Student Living Index 2019)



Visit our website for full details of our scholarships and how to apply:
www.intostudy.com/queens/scholarships

"Being awarded the Queen's 10-year Anniversary scholarship has greatly reduced the financial burden on my family, and has motivated me to work even harder. A degree from Queen's University Belfast is acknowledged worldwide, therefore it definitely makes the percentage of getting your desired job higher - along with the leadership skills, communication skills and cross-cultural awareness that are built by studying abroad."

Maegan, Malaysia
Completed International Foundation in Business, Humanities and Social Sciences and progressed to LLB (Hons) Law at Queen's University Belfast



Dates and prices

The cost of your programme may vary depending on factors including the pathway chosen and programme length. The following guide to costs is based on pricing for the current academic year and provides an indication of the cost of attendance for some of our pathways. For specific cost information, please refer online: www.intostudy.com/queens/courses

Estimated cost of attendance based on prices for current academic year 2020-2021

Study length	Tuition	Accommodation	Books and fees	Airport pick up [†]	Insurance	Total
Academic programmes						
International Foundation (2 term)	£13,995	£3,664-£3,738	£820-£880	£35-£50	£196	£18,675-£18,809
International Foundation (3 term)	£17,375	£4,650-£5,814	£430-£830	£35-£50	£357	£22,812-£24,376
International Foundation (4 term)	£18,995	£7,200-£7,650	£510-£970	£35-£50	£466	£27,171-£28,081
International Year One (3 term)	£17,375	£4,650-£5,814	£540-£940	£35-£50	£357	£22,922-£24,486
Graduate Diploma (3 term)	£17,375	£4,650-£5,814	£430	£35-£50	£357	£22,812-£23,976
English language courses						
1 term*	£4,585	£1,500-£1,836	£90	£35-£50	£122	£6,297-£6,633

Start months and term dates

Academic programmes**		Academic English		Pre-sessional English	
January (3 term)	Mon 11 Jan 2021-Fri 13 Aug 2021	January (1 term)	Mon 11 Jan 2021-Fri 19 Mar 2021	June (10 weeks)	Mon 21 Jun 2021-Fri 27 Aug 2021
March (2 term)	Thu 18 Mar 2021-Fri 13 Aug 2021	March (1 term)	Mon 22 Mar 2021-Fri 11 Jun 2021	July (6 weeks)	Mon 19 Jul 2021-Fri 27 Aug 2021
June (4 term)	Mon 21 Jun 2021-Fri 10 Jun 2022	June (1 term)	Mon 21 Jun 2021-Fri 27 Aug 2021	August (4 weeks)	Mon 02 Aug 2021-Fri 28 Aug 2021
September (4 term)	Mon 13 Sep 2021-Fri 26 Aug 2022	September (1 term)	Mon 13 Sep 2021-Fri 03 Dec 2021		
September (3 term)	Mon 13 Sep 2021-Fri 10 Jun 2022	January (1 term)	Mon 10 Jan 2022-Fri 18 Mar 2022		
January (3 term)	Mon 10 Jan 2022-Fri 26 Aug 2022				

Prices shown are for the current academic year of 01 September 2020 - 31 August 2021 and for indicative purposes only. All students who confirm their offer on or before 31 January 2021 will pay the 2020/2021 price as per their existing offer letter. After 31 January 2021, where tuition fees have increased, all current offers will be reissued and students will receive a new offer with the new 2021/2022 pricing. For full details of term dates, please visit the relevant course page at www.intostudy.com/queens/courses

* The price will depend on your start date and length of study. Prices shown are only for one term.

Vacation weeks in between terms are extra and will be charged at the weekly accommodation price.

** The Centre also offer a 5-term programme that incorporates two terms of English language preparation. For dates and prices please visit our website.

† Please note airport pickup is optional and is not included in the total.



Apply via your local INTO educational counsellor

If you would like us to put you in contact with one of our counsellors, please contact us.



Apply online

Complete our online application form: apply.intostudy.com



Need some help with your tuition fees?

Check to see if you're eligible for a scholarship: www.intostudy.com/queens/scholarships

Discover more online

For students:

www.intostudy.com/queens

For education counsellors:

partnerportal.intoglobal.com/queens

Connect with us



Contact us

Enquiries and applications:

ukes@intoglobal.com

or +44 1273 876040

Visit the Centre:

into@qub.ac.uk

or +44 28 9097 6850

Centre address details:

INTO Queen's University Belfast

Queen's University Belfast

2-8 Lennoxvale

Belfast

BT9 5BY

Northern Ireland



Through innovative partnerships with leading universities, we expand opportunities for higher education, ensuring success and transforming the lives of our students and staff.

INTO GIVING

Working across the globe, INTO Giving supports projects that increase access to education and improve the quality of teaching and learning. For more information visit www.into-giving.com

Education counsellor's stamp



QUEEN'S UNIVERSITY BELFAST