

INTO 

UEA University of
East Anglia



**THIS IS
INTO UEA**

**UNIVERSITY PATHWAYS
FOR INTERNATIONAL
STUDENTS 2021-22**

TEF Gold



TOP 25

IN THE UK

The Times and The Sunday Times
Good University Guide 2020

WORLD TOP 200

UNIVERSITIES

Times Higher Education World
University Rankings 2011–20

10TH

IN THE UK FOR QUALITY
OF RESEARCH OUTPUT

Research Excellence Framework 2014

3RD

IN THE UK FOR
PHYSIOTHERAPY

The Times and The Sunday Times
Good University Guide 2020

9TH

IN THE UK FOR
CREATIVE WRITING

The Complete University
Guide 2020

9TH

IN THE UK FOR
ACCOUNTING AND FINANCE

The Guardian University Guide 2020

14TH

IN THE UK FOR
PHARMACOLOGY AND
PHARMACY

The Times and The Sunday Times
Good University Guide 2020

TOP 20

IN THE UK FOR
BUSINESS STUDIES

The Times and The Sunday Times
Good University Guide 2020

TOP 20

IN THE UK FOR
COMMUNICATION AND
MEDIA STUDIES

The Times and The Sunday Times
Good University Guide 2020

TOP 20

IN THE UK FOR
ECONOMICS

The Times and The Sunday Times
Good University Guide 2020

25TH

IN THE WORLD FOR
DEVELOPMENT STUDIES

QS World University Rankings
by Subject 2020

TOP 50

IN THE WORLD FOR
ENVIRONMENTAL SCIENCES

QS World University Rankings
by Subject 2020

THIS IS INTO UEA

THIS IS THE INTO UEA EXPERIENCE

Welcome to INTO University of East Anglia (UEA) – your pathway to a degree from UEA. We give international students like you the opportunity to achieve your academic ambitions and study with a unique community of teachers, researchers and the world’s next generation of problem-solvers.

At INTO UEA, you will study a specialist programme designed exclusively for international students and tailored to the requirements of the University. You will complete your course at our modern Study Centre in the heart of UEA’s vibrant, multicultural campus, where you will be part of the community from the day you arrive.

Choosing to study abroad is a big decision, but at INTO University of East Anglia, we will give you everything you need to succeed at university and beyond. Just take a look at our student success rates in 2018–19!

Choose #INTOUEA and open up a lifetime of opportunities.



90% PASSED

91% of which were ELIGIBLE to progress

Passed: % of those who completed their pathway
Eligible: % eligible to progress to the University of East Anglia of those who passed

“INTO UEA was the very first INTO Centre and has welcomed students for more than 10 years. Excellent facilities, combined with our location in the heart of a beautiful campus, provide the perfect environment for student success and happiness.”

DEBBIE PRICE
CENTRE DIRECTOR



THIS IS UEA

“Over the past decade, INTO students have played a significant role at UEA – benefitting from a vibrant academic, social and cultural experience on campus. INTO takes the amazing potential of its students and prepares them for further success at UEA.”

PROFESSOR DAVID RICHARDSON
VICE-CHANCELLOR, UEA



“You need to connect with people who have experience in your field, and UEA provides plenty of opportunities to network with students and professionals. The Actuarial Sciences department, for example, works closely with one of the biggest insurance companies in the world – Aviva.”

IAN, KENYA
COMPLETED AN INTERNATIONAL FOUNDATION AND PROGRESSED TO BSC (HONS) ACTUARIAL SCIENCES WITH A YEAR IN INDUSTRY AT UEA. GRADUATED WITH FIRST CLASS HONOURS AND NOW WORKS AS AN ACTUARIAL ASSOCIATE AT WILLIS TOWERS WATSON IN LONDON, UK

97%

STUDENT SATISFACTION FOR UNIVERSITY CAMPUS ENVIRONMENT (INTO ANNUAL STUDENT EXPERIENCE SURVEY 2019)

The University of East Anglia (UEA) is a thriving global community that will support you in discovering who you are and who you want to be, backed by excellent teaching, employability enhancement opportunities and the latest research into global issues. Join UEA to make connections for life and explore your academic passions in a place where you belong.

GO FURTHER WITH YOUR STUDIES

UEA is globally recognised as a high-performing university that excels in its teaching. Students improve academically throughout their time at UEA, making a bigger difference between their arrival and graduation grades than other UK institutions*.

ENHANCE YOUR EMPLOYABILITY

Through work experience opportunities and links with global, national and local employers, you will have the chance to gain valuable industry experience as you build your professional network. At UEA, it isn't just about getting a degree – it's finding a career you'll love. Employability support includes:

- the Enterprise Centre – giving you the opportunity to start your own business with business coaching, funding and workshops
- CareerCentral – careers guidance while you are studying and after you graduate
- the UEA Award – develop core skills and attributes needed for future employment

THINKING WITHOUT BORDERS

UEA is part of the Norwich Research Park – one of Europe's largest collaborative research sites. Focusing on health, food, development and the environment, this unique research facility explores everything from plant science, genetics and microbiology, to food science, gut biology and human health.

RESEARCH THAT MAKES AN IMPACT

UEA believes that anything is possible when creative and forward-thinking people get together. The people make UEA unique. People like you, who aren't scared to think outside the box and push things forward.

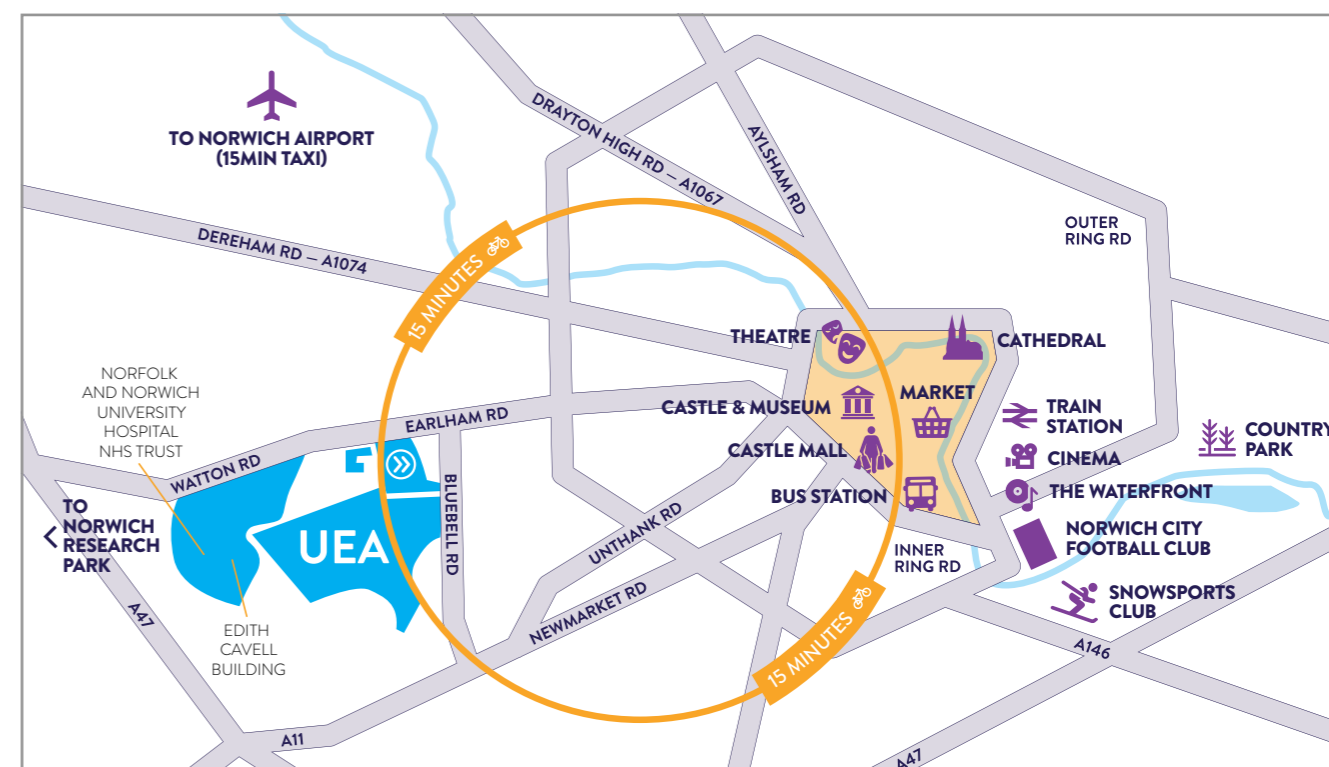
Many award-winning scientists and authors have studied here, along with remarkable medics, business people and academics, including Nobel Prize winning geneticist Sir Paul Nurse and novelist Sir Kazuo Ishiguro.

FEEL LIKE YOU BELONG

UEA has the perfect balance between a peaceful, serene backdrop for your studies and a vibrant, multicultural hub of activity that always has something exciting to enjoy.

A great place for international students to call home, this unique campus:

- is designed as a mini-city with all the amenities you need in one place, but is only a short bus journey or bike ride to the creative and energetic city centre
- has a forward-thinking, stimulating and fun campus culture that welcomes new ideas and new ways of thinking, and recognises that a work-life balance is important for your academic success
- offers a student experience to remember for life – you'll join more than 3,500 international students from 100+ countries
- gives you the freedom to find out who you are and how you fit into your new community, so you can feel like you belong



THIS IS YOUR CAMPUS

“The thing I like most about UEA is the diversity – I’ve met students from all over the world. There are also many clubs, societies and activities – something for everyone – so you truly never feel bored.”

SOFÍA, COLOMBIA
COMPLETED AN INTERNATIONAL FOUNDATION AND PROGRESSED TO BSC (HONS) BIOCHEMISTRY AT UEA



With distinctive and award-winning architecture, UEA’s campus is a vibrant and inspiring place to live and study. It’s designed as a mini-city for students, so you will find everything you need for an amazing study abroad experience.

TOP 5

SAFEST UNIVERSITIES IN ENGLAND (TIMES HIGHER EDUCATION STUDENT EXPERIENCE SURVEY 2018)



YOUR INTO STUDY CENTRE

The INTO Centre is located in the centre of campus close to everything you need, so you will be part of the University community from day one. INTO UEA provides university-style teaching in the Centre to prepare you for life at UEA. You will benefit from:

- a Learning Resource Centre containing academic books, journals and computers
- three well-equipped science laboratories
- a lecture theatre seating up to 80 students so you can experience lecture-style classes
- the INTO UEA Café serving three meals a day, with halal and vegetarian options
- your accommodation in the same building as your classes (see page 9)

WE’RE HERE TO SUPPORT YOU

From the moment you arrive, the INTO Student Services team will help you settle into life in Norwich. There is a 24-hour telephone helpline for out-of-office questions, and extra support is provided for students under the age of 18.

Go to the Courtyard Office to find our Social and Welfare Officers who can support you with any non-academic issues, including:

- help registering with a doctor
- help with renewing your visa
- advice and guidance about student life

UNIVERSITY FACILITIES

INTO UEA students also have access to many of the University’s facilities, such as:

- UEA library – open 24/7, 365 days a year
- Sportspark – with an Olympic-sized swimming pool, in and outdoor courts and pitches, a fitness centre and a climbing wall
- Multifaith Centre – a spiritual meeting place and community centre on campus
- several on-campus restaurants serving international food options

SUBJECT-SPECIFIC FACILITIES

UEA has some amazing subject-specific facilities available which, depending on your chosen degree, you may be able to access.

- Film and Television students: industry-standard film and television studio
- Psychology students: EEG, Transcranial Magnetic Stimulation, Functional Near-Infrared Spectroscopy, motion tracking and eye tracking labs
- Pharmacy students: mock pharmacy dispensary
- Environmental Sciences students: virtual reality theatre
- Physiotherapy students: anatomy suite and treatment labs
- Health Sciences students: the interactive Norwich Electronic Assistive Technology (NEAT) Centre

INTO UEA SOCIAL ACTIVITIES

It’s important to maintain a healthy work-life balance here. In your first week, you will take part in an orientation programme which will give you the chance to meet other students. The INTO Centre runs regular trips, game and movie nights, craft nights and seasonal events to keep you entertained between studies.

UEA STUDENT SOCIAL LIFE

The LCR is a popular nightclub and music concert venue located in the middle of campus. As an INTO UEA student, you will also become a member of the Students’ Union. In Union House, you’ll find a range of facilities run by the Students’ Union (SU), including:

- Unio Coffee – an ethical coffee shop
- bar(su) and pizza(su) – two bars that host regular student events, plus a pizzeria
- shop(su) – a conveniently located shop containing all the student essentials
- The Hive – there’s always something interesting going on here!
- 250+ clubs and societies, including law, entrepreneurship, debating, drama, anime, music, cultural and international societies

TOP 10

IN THE UK FOR STUDENT SOCIAL LIFE (TIMES HIGHER EDUCATION STUDENT EXPERIENCE SURVEY 2018)

THIS IS NORWICH

“INTO UEA is located in Norwich which is one of the safest cities in the UK. This made my parents feel secure in sending me abroad to study. I love the city – it has a great market which sells really good food, as well as a beautiful river. I liked strolling around the riverbank at the weekend.”

JANICE, INDONESIA
COMPLETED AN INTERNATIONAL FOUNDATION AND PROGRESSED TO MPHARM PHARMACY WITH A PLACEMENT YEAR AT UEA. GRADUATED WITH FIRST CLASS HONOURS AND NOW WORKS AS A RESIDENT PHARMACIST FOR ADDENBROOKE'S HOSPITAL IN CAMBRIDGE, UK

THE UK'S BEST KEPT SECRET

Full of creativity, energy and culture, Norwich is a great place to explore and have some fun. Just two miles from the UEA campus, it doesn't take long to embrace city life.

You'll find lots to do here, and you'll also have the security of knowing that Norwich is one of the top 10 safest places to be a student (The Telegraph 2017).

A FAVOURITE STUDENT CITY

Home to hundreds of creative businesses, stylish shops and international restaurants, Norwich is an exciting place to live in.

The city is large enough to host major events, such as the stunning theatrical acts of the Norfolk and Norwich Festival, but small enough to find hidden gems. You'll discover:

- a trampoline park, bowling alleys, cinemas and theatres
- several Chinese, Asian and international supermarkets
- music acts performing at The Waterfront, run by UEA's SU
- two modern shopping centres to buy top brands
- easy travel to the coast to get involved in watersports
- a dry ski slope within a few miles of the University

EXPLORE THE UK FROM NORWICH

If you are eager to explore the rest of the UK and Europe, Norwich has great transport links. Fly to Manchester, Edinburgh or Amsterdam from its international airport, or get the train to:

- Cromer Beach – 1 hour
- Cambridge – 1 hour and 20 minutes
- London – under two hours

ONE OF THE

BEST

PLACES TO LIVE IN THE UK
(THE SUNDAY TIMES
BEST PLACES TO LIVE 2020)



THIS IS YOUR HOME

THIS IS YOUR HOME



Our modern, on-campus accommodation means that you will quickly become part of UEA's friendly and welcoming student community. With homestay accommodation available as an alternative option, it's easy for you to find the perfect place to stay.

INTO STUDENT RESIDENCES

If you would like to live on campus, the INTO student residences are in the same building as the INTO Centre, so you are perfectly located for getting to your lessons quickly and easily!

Your accommodation will include:

- a private study bedroom with bathroom
- shared kitchen and living spaces with other INTO UEA students
- the option to book a meal plan and have two meals cooked for you in the on-site, international INTO Café every day

After you complete your INTO course, you'll be guaranteed accommodation in UEA halls of residence for the first year of your degree.

HOMESTAY

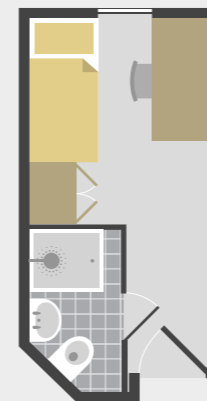
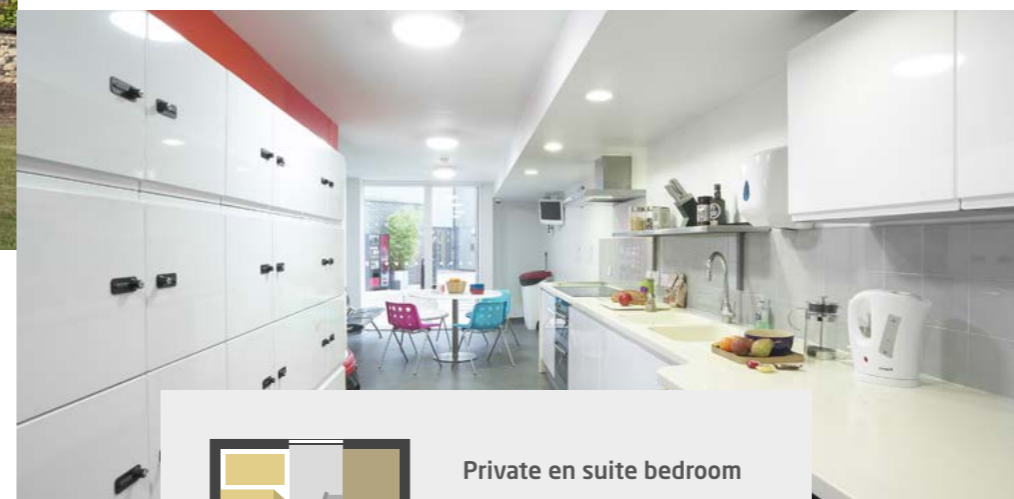
This is a unique opportunity to experience British life and culture first-hand. You will have a private room in a carefully selected host's home, sharing mealtimes and living spaces.

SUPPORTING YOU

In the residences, you will find on-site staff available 24/7 to offer support and ensure your experience is a happy one. If you are under the age of 18, you will live on a corridor with additional entry access security and receive extra support from the Welfare Officers.

TAKE A VIRTUAL TOUR OF THE CAMPUS, CITY AND OUR ACCOMMODATION:

www.myin.to/UEAVirtualTour



Private en suite bedroom

- Within the INTO Centre
- En suite bathroom
- 24/7 staff
- Laundry facilities
- Wi-Fi
- Bedrooms cleaned regularly

95%

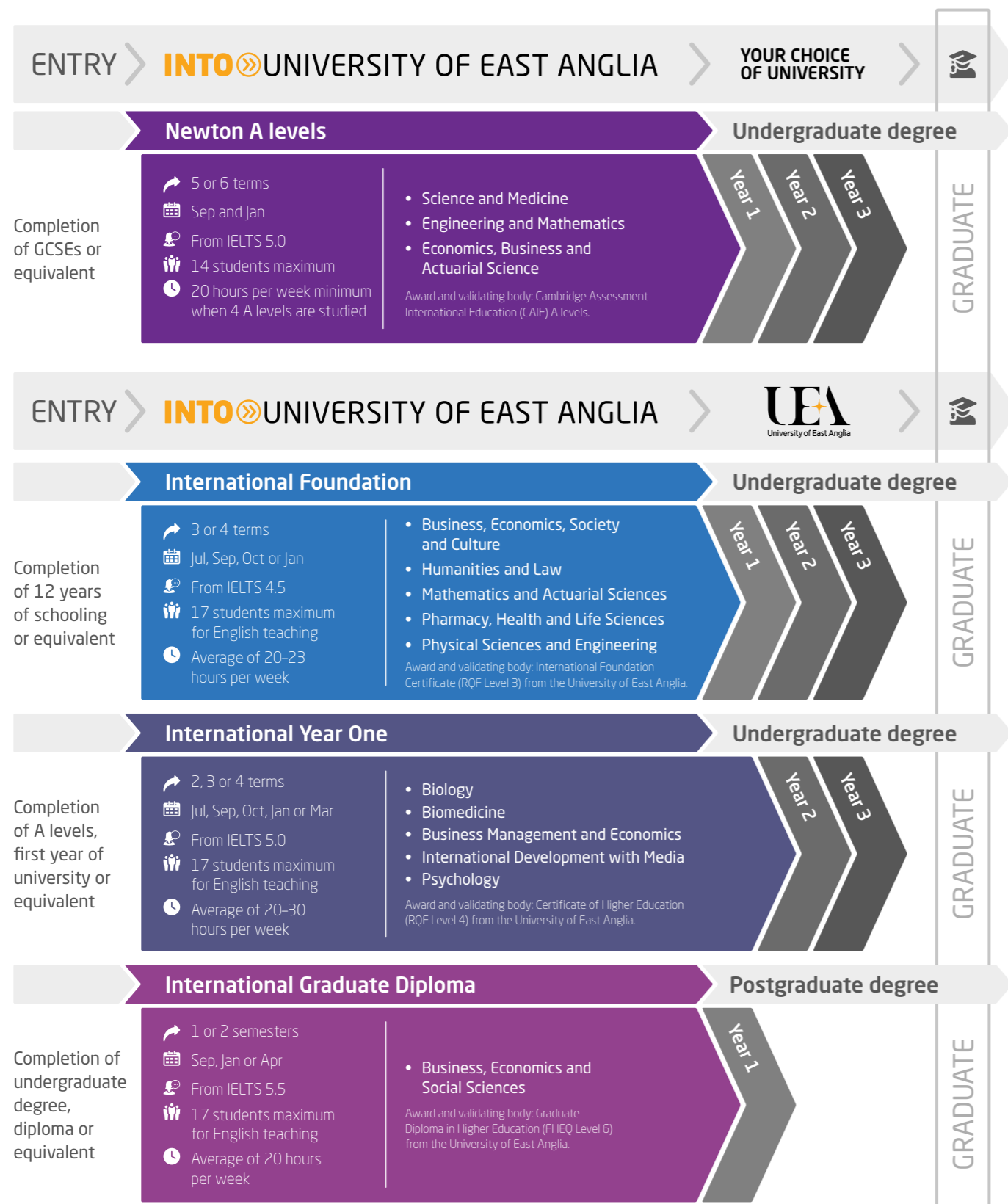
STUDENT SATISFACTION FOR FEELING SAFE AND SECURE (INTO ANNUAL STUDENT EXPERIENCE SURVEY 2019)

INTO UEA aims to provide the accommodation requested. However, there may be occasions when INTO UEA is unable to provide the requested accommodation and reserves the right to offer an alternative type of accommodation instead. The price for any alternative accommodation may differ and will be confirmed to students at the time of their offer.

www.intostudy.com/uea

Choosing your course

Prepare for your university degree with our tailored, academic pathway programmes designed in partnership with the University of East Anglia. You'll benefit from university-style teaching for subject-based modules and high academic standards. Then, when it comes to progressing to your chosen degree, we'll support you with your university application.



Please note that course length and start month options may vary depending on the pathway chosen. Please visit www.intostudy.com/uea/courses for full information.

Newton A level Programme

- > A unique opportunity to study A levels related to science, mathematics and economics on a university campus, receiving expert tuition and focused attention.
- > You could achieve exceptional A level results and gain a place at a top university, such as Cambridge, Imperial, LSE, UCL, UEA and medical schools in the UK and Ireland.
- > Receive support while applying to competitive degree programmes. 100% of students who applied to Cambridge and Oxford in 2018 and 2019 were invited for an interview!

Science and Medicine

- > Opportunities for medical work placements at the University hospital.
- > Weekly Medical Ethics classes to prepare you for medical applications.

Compulsory A level subjects:

Biology
Chemistry
Mathematics

Optional A level subjects:

Physics
Psychology

Progress to undergraduate degrees such as Medicine, Dentistry and Psychology

Engineering and Mathematics

- > Participate in weekly maths enhancement classes to develop your skills.
- > Take part in the nationally recognised UK Mathematics Challenge, competing against other international and UK students, and work towards a CREST Award.

Compulsory A level subjects:

Physics
Mathematics
Further Mathematics

Optional A level subjects:

Chemistry
Economics

Progress to undergraduate degrees such as Computer Science, Engineering and Physics

Economics, Business and Actuarial Science

- > Impress universities by extending your knowledge beyond the curriculum, and undertake a recognised project qualification to enhance your applications.
- > Work towards a CREST Award to enhance your university applications and develop excellent communication, project management and teamwork skills.

Compulsory A level subjects:

Economics
Mathematics

Optional A level subjects:

Further Mathematics
Physics

Progress to undergraduate degrees such as Accounting, Business and Economics

Did you know?

We have a brochure dedicated to the Newton A level Programme, where you can find more about our programme, dates and prices. Please contact your counsellor for more information.

Prepare for an undergraduate degree at a top UK university

Start date

6 term: Sep
5 term: Jan

English language entry requirements

5 term: IELTS 5.5 (with a minimum of 5.5 in writing and no less than 5.0 in all other subskills) or equivalent.

6 term: IELTS 5.0 (with a minimum of 5.0 in all subskills) or equivalent.

Students intending to progress to Medicine, Dentistry or Veterinary Science: 5 and 6 term: IELTS 6.0 or equivalent.

If you do not meet the minimum English language requirements, you should apply for our Academic English course. See page 19 for more information.

Age requirement

16 years and above*

* All students must be 16 years old by the published start date of the programme.



Study towards globally-respected CAIE A levels.

73%

of A2 level grades were A*–A in 2019

8 students

average class size in 2018–19

100%

of students who achieved a minimum of three A grades for medical school in 2019 successfully gained a place

Visit for full course details:
www.intostudy.com/newton/courses

Progress to Year 1 of an undergraduate degree at UEA

Start date

3 term: Sep or Jan
4 term: Jul or Oct

English language entry requirements*

3 term: IELTS 5.0 (with a minimum of 5.0 in reading and writing and 4.5 in any other subskills) or equivalent.

4 term: IELTS 4.5 (with a minimum of 4.5 in reading and writing and 4.0 in all other subskills) or equivalent.

Age requirement

16 years and above**

* If you do not meet the minimum English language requirements, you should apply for our Academic English course. See page 19 for more information.

** All students must be 16 years old by the published start date of the programme.

Prepare to progress to a degree at the University of East Anglia.

Top 20

in the UK for Business Studies

(The Times and The Sunday Times Good University Guide 2020)

62nd

in the world for Law

(Times Higher Education World University Rankings by Subject 2020)

14th

in the UK for Pharmacology and Pharmacy

(The Times and The Sunday Times Good University Guide 2020)

3rd

in the UK for Physiotherapy

(The Times and The Sunday Times Good University Guide 2020)

International Foundation

Business, Economics, Society and Culture - FBS

- > During your pathway programme, you will demonstrate your entrepreneurial skills by making real profits with real money, using a business idea of your choice.
- > Opportunity to progress to an undergraduate degree in a business, management or accounting subject area at the AMBA accredited Norwich Business School.

What will I study?

You will need to earn 120 credits from the following modules:

Academic English and Study Skills (40 credits)

Economics (10 credits)

Foundation Mathematics (20 credits)

Introduction to Business (10 credits)

Professional and Communication Skills (20 credits)

Society and Culture (20 credits)

Progress to **100+** degrees. Find out more online at www.intostudy.com/uea/FBS

Humanities and Law - FHUM

- > Benefit from practical learning, including experiencing a British courtroom in session, and develop a global outlook by analysing current international relations.
- > Progress to a degree in a wide range of subject areas within the Faculty of Arts and Humanities, the School of International Development or UEA Law School.

What will I study?

You will need to earn 120 credits from the following modules:

Academic English and Study Skills (40 credits)

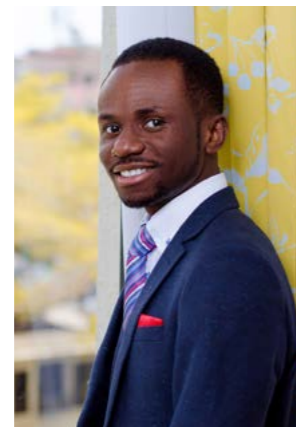
Foundation Mathematics (20 credits)

International and Development Studies (20 credits)

Law (20 credits)

Society and Culture (20 credits)

Progress to **60+** degrees. Find out more online at www.intostudy.com/uea/FHUM



"The exceptional teachers at INTO UEA care deeply about the academic development of their students. They are so invested in helping you succeed and are very supportive of your dreams and aspirations. INTO really helped to prepare me for my university education."

Duuamene, Nigeria
Completed an International Foundation and progressed to BSc (Hons) Biomedicine at UEA. Graduated with First Class Honours and now completing a PhD in Medical Sciences at the University of Cambridge



Mathematics and Actuarial Sciences - FMAT

- > Benefit from practical classes, trips and a research project during your pathway programme so you can collect data and put your data analysis skills into practice.
- > Opportunity to progress to an undergraduate degree at UEA's School of Computing, School of Mathematics or the AMBA accredited Norwich Business School.

What will I study?

You will need to earn 120 credits from the following modules:

Academic English and Study Skills (30 credits)

Physics (20 credits)

Economics (10 credits)

Problem Solving for Mathematical

Introduction to Accounting (15 credits)

Sciences (15 credits)

Mathematics (30 credits)

Progress to **80+** degrees. Find out more online at www.intostudy.com/uea/FMAT



Pharmacy, Health and Life Sciences - FPB

- > During your pathway programme, you will develop your practical skills in science laboratories at the INTO Centre using high-quality equipment.
- > Progress to a degree at the School of Health Sciences, the School of Biological Sciences, the School of Pharmacy, or another school within the Faculty of Science.

What will I study?

You will need to earn 120 credits from the following module options:

Core modules:

Academic English and Study Skills (30 credits)

Biology and Human Physiology (30 credits)

Foundation Chemistry (15 credits)

Further Chemistry (10 credits)

Numerical and Analytical Skills (20 credits)

Specialist modules:

Preparation for Health and Life Sciences

(15 credits) or

Introduction to Pharmacy Skills

(Pharmacy applicants only) (15 credits)†

Progress to **70+** degrees. Find out more online at www.intostudy.com/uea/FPB



Physical Sciences and Engineering - FPS

- > During your pathway programme, you will learn planning and team management skills to help you lead in group projects such as building and programming LEGO robots.
- > Opportunity to progress to an undergraduate degree in engineering, benefitting from UEA's strong links to businesses such as Arriva, Claxton Engineering and Shell UK.

What will I study?

You will need to earn 120 credits from the following module options:

Core modules:

Academic English and Study Skills (30 credits)

Foundation Chemistry (15 credits)

Mathematics (30 credits)

Physics (20 credits)

Specialist modules:

Applied Physics (10 credits) or

Further Chemistry (10 credits)

Introduction to Pharmacy Skills

(Pharmacy applicants only) (15 credits)* or

Problem Solving for Mathematical Sciences

(15 credits)

Progress to **80+** degrees. Find out more online at www.intostudy.com/uea/FPS

Progress to Year 1 of an undergraduate degree at UEA

Start date

3 term: Sep or Jan
4 term: Jul or Oct

English language entry requirements*

3 term: IELTS 5.0 (with a minimum of 5.0 in reading and writing and 4.5 in all other subskills) or equivalent.

4 term: IELTS 4.5 (with a minimum of 4.5 in reading and writing and 4.0 in all other subskills) or equivalent.

Age requirement

16 years and above**

Start date

3 term: Sep or Jan
4 term: Jul or Oct

English language entry requirements*

3 term: IELTS 5.0 (with a minimum of 5.0 in reading and writing and 4.5 in all other subskills) or equivalent.

4 term: IELTS 4.5 (with a minimum of 4.5 in reading and writing and 4.0 in all other subskills) or equivalent.

Students intending to progress to: Physiotherapy, Occupational Therapy or Nursing: IELTS 6.0 (with a minimum of 6.0 in all subskills) or equivalent.

Pharmacy: IELTS 6.0 (with a minimum of 5.5 in all subskills) or equivalent.

Speech and Language Therapy: IELTS 6.5 (with a minimum of 6.5 in all subskills) or equivalent.

Age requirement

16 years and above**

Start date

3 term: Sep or Jan
4 term: Jul or Oct

English language entry requirements*

3 term: IELTS 5.0 (with a minimum of 5.0 in reading and writing and 4.5 in all other subskills) or equivalent.

4 term: IELTS 4.5 (with a minimum of 4.5 in reading and writing and 4.0 in all other subskills) or equivalent.

Students intending to progress to Pharmacy: IELTS 6.0 (with a minimum of 5.5 in all subskills) or equivalent.

Age requirement

16 years and above**

* If you do not meet the minimum English language requirements, you should apply for our Academic English course. See page 19 for more information.

** All students must be 16 years old by the published start date of the programme.

† This module is only available to students aiming to progress to Pharmacy and starting their programme in September.

International Foundation progression degree options

There are more than 160 progression degree options at the University of East Anglia. You can progress to any of these from one of our INTO UEA pathway programmes. Below is a selection of some of the most popular. See pages 12-13 for more details on the pathways.

Degree	Pathway(s)	Specific requirements	English level	Final grade
Accounting and Finance BSc (Hons)	FBS or FMAT	50% in all modules.	65% (with 55% in all subskills)	65%
Actuarial Sciences BSc (Hons)	FPS or FMAT	70% in Mathematics module.	65% (with 55% in all subskills)	60%
Adult Nursing BSc (Hons)	FPB	65% in Biology and Human Physiology. Interview required.	70% (with 70% in all subskills)	65%
Biochemistry BSc (Hons) *	FPS or FPB	Compulsory module for FPS pathway: Further Chemistry. Average of 65% in Chemistry modules.	65% (with 55% in all subskills)	60%
Biological Sciences BSc (Hons) *	FPB	65% in Biology and Human Physiology. Option with a year abroad has a 70% final grade requirement.	65% (with 55% in all subskills)	60%
Biomedicine BSc (Hons)	FPB	65% in Biology and Human Physiology and Foundation Chemistry.	65% (with 55% in all subskills)	60%
Business Finance and Economics BSc (Hons)	FBS or FMAT	50% in all modules.	60% (with 55% in all subskills)	55%
Business Information Systems BSc (Hons)	FBS, FMAT, FPS		65% (with 55% in all subskills)	60%
Business Management BA (Hons)	FBS	50% in all modules.	65% (with 55% in all subskills)	65%
Chemistry BSc (Hons) *	FPS or FPB	Average of 65% in Chemistry modules.	60% (with 55% in all subskills)	60%
Children's Nursing BSc (Hons)	FPB	65% in Biology and Human Physiology. Interview required.	70% (with 70% in all subskills)	70%
Cognitive Psychology BSc (Hons) *	All pathways accepted	60% in Foundation Mathematics or 50% in Mathematics or 50% in Numerical and Analytical Skills.	65% (with 55% in all subskills)	60%
Computer Systems Engineering BEng (Hons)	FBS, FMAT, FPS	FBS pathway: final academic grade of 50% with 60% in Foundation Mathematics and 50% in Economics.	65% (with 55% in all subskills)	60%
Computing Science BSc (Hons) *	FBS, FMAT, FPS	FBS pathway: final academic grade of 50% with 60% in Foundation Mathematics and 50% in Economics.	65% (with 55% in all subskills)	60% (FMAT and FPS pathways)
Developmental Psychology BSc (Hons) *	All pathways accepted	60% in Foundation Mathematics or 50% in Mathematics or 50% in Numerical and Analytical Skills.	65% (with 55% in all subskills)	60%
Economics BSc (Hons)	FBS or FMAT	50% in all modules.	60% (with 55% in all subskills)	55%
Economics with Accountancy BSc (Hons)	FBS or FMAT	50% in all modules.	60% (with 55% in all subskills)	55%
Education BA (Hons)	FBS or FHUM	Interview required.	65% (with 60% in all subskills)	55%
Energy Engineering BEng (Hons) *	FMAT or FPS	65% in Mathematics.	65% (with 55% in all subskills)	60%
Engineering BEng (Hons) *	FMAT or FPS	65% in Mathematics. Option with a year in industry requires 75% in Mathematics.	65% (with 55% in all subskills)	60%
English Literature with Creative Writing BA (Hons)	FBS, FHUM	55% in Society and Culture. Successful submission of a portfolio of five pages of your own creative writing (poetry, prose, etc).	65% (with 55% in all subskills)	60%
Environmental Sciences BSc (Hons) *	FMAT, FPS or FPB		65% (with 55% in all subskills)	60%
Film and Television Studies BA (Hons)	FBS or FHUM	55% in Society and Culture.	65% (with 55% in all subskills)	60%
Geology with Geography BSc (Hons) *	FPS, FMAT, FPB		65% (with 55% in all subskills)	60%
History and Politics BA (Hons)	FBS or FHUM	55% in Society and Culture.	65% (with 55% in all subskills)	60%
Intercultural Communication with Business Management BA (Hons)	FBS or FHUM		65% (with 55% in all subskills)	55%
International Development BA (Hons)	All pathways accepted	60% in Foundation Mathematics or 50% in Mathematics or 50% in Numerical and Analytical Skills.	65% (with 55% in all subskills)	60%
International Relations BA (Hons)	FBS or FHUM	55% in Society and Culture.	65% (with 55% in all subskills)	60%
Law LLB (Hons)	FHUM		65% (with 55% in all subskills)	65%
Marketing and Management BA (Hons)	FBS	50% in all modules.	65% (with 55% in all subskills)	65%
Media and International Development BA (Hons)	All pathways accepted	60% in Foundation Mathematics or 50% in Mathematics or 50% in Numerical and Analytical Skills.	65% (with 55% in all subskills)	60%
Media Studies BA (Hons)	FBS or FHUM	55% in Society and Culture.	65% (with 55% in all subskills)	60%
Meteorology and Oceanography BSc (Hons) *	FPS or FMAT	65% in Mathematics.	65% (with 55% in all subskills)	60%
Molecular Biology and Genetics BSc (Hons)	FPB	65% in Biology and Human Physiology.	65% (with 55% in all subskills)	60%
Occupational Therapy BSc (Hons)	FPB	65% in Biology and Human Physiology. Interview required.	70% (with 70% in all subskills)	65%
Pharmacology and Drug Discovery BSc (Hons)	FPS or FPB	Compulsory module for FPS pathway: Further Chemistry. Average of 65% in Chemistry modules.	65% (with 55% in all subskills)	60%
Pharmacy MPharm	FPS or FPB	Interview required.	70% (with 60% in all subskills)	65%
Physics BSc (Hons) *	FPS or FMAT	65% in Mathematics and 65% in Physics.	65% (with 55% in all subskills)	65%
Physiotherapy BSc (Hons)	FPB	65% in Biology and Human Physiology. Interview required.	70% (with 70% in all subskills)	75%
Politics BA (Hons)	FBS or FHUM	55% in Society and Culture.	65% (with 55% in all subskills)	60%
Psychology BSc (Hons)	All pathways accepted	60% in Foundation Mathematics or 50% in Mathematics or 50% in Numerical and Analytical Skills.	65% (with 55% in all subskills)	60%
Society, Culture and Media BA (Hons)	FBS or FHUM	55% in Society and Culture.	65% (with 55% in all subskills)	60%
Speech and Language Therapy BSc (Hons)	FPB	Interview required.	75% (with 75% in all subskills)	75%
Sports Development BSc (Hons)	FPB	60% in Biology and Human Physiology.	65% (with 60% in all subskills)	60%

Find comprehensive information on all academic pathway programmes, degree options and progression requirements at: www.intostudy.com/uea/courses

Degree option with a work placement also available
 Degree option with a year abroad or overseas experience also available

Please note: English level and academic progression requirements are correct to the best of our knowledge at the time of going to print. In some circumstances, these may change throughout the year - please visit www.intostudy.com/uea/courses for the most up-to-date information. Progression requirements, including English level and final grade, may be higher for degrees with a year in industry, a year abroad/overseas placement, and with an integrated Master's.

* A Master's degree option is also available.

International Year One

Biology - BLGY

- > Benefit from pathway modules taught alongside first year students at UEA: 'Biodiversity', 'Evolution, Behaviour and Ecology' and 'Molecular Biology and Genetics'.
- > Take advantage of extensive research facilities in the Norwich Research Park, as well as modern teaching labs in the new £31 million Building for Science and Engineering.
- > Opportunity to progress to Year 2 of an undergraduate degree in biological sciences or molecular biology and genetics at UEA's School of Biological Sciences.

What will I study?

You will need to earn 120 credits from the following modules:

Biodiversity (20 credits)	English and Skills for Biologists (20 credits)
Biological Chemistry for International Students (20 credits)	Evolution, Behaviour and Ecology (20 credits)
Cell Biology and Physiology for International Students (20 credits)	Molecular Biology and Genetics (20 credits)

Progress to 4 degrees. Find out more online at www.intostudy.com/uea/BLGY

Biomedicine - BIOMED

- > Progress to Year 2 of BSc (Hons) Biomedicine at UEA's School of Biological Sciences.
- > Benefit from the following pathway modules taught alongside first year students at UEA: 'Introduction to Biomedicine' and 'Molecular Biology and Genetics'.
- > 'Introduction to Biomedicine' is taught by world-class academics from the School of Biological Sciences and Norwich Medical School, as well as hospital consultants and biomedical scientists from the Norfolk and Norwich University Hospital.

What will I study?

You will need to earn 120 credits from the following modules:

Biological Chemistry for International Students (20 credits)	English and Skills for Biologists (20 credits)
Cell Biology and Physiology for International Students (20 credits)	Introduction to Biomedicine (40 credits)
	Molecular Biology and Genetics (20 credits)

Progress to 1 degree. Find out more online at www.intostudy.com/uea/BIOMED



"During my degree, I had the opportunity to work at the John Innes Centre - a centre dedicated to research in plant and microbial science. This gave me a wealth of practical skills and a better understanding of research in my field of interest."

Mellieha, UK
 Progressed from INTO UEA to study BSc (Hons) Molecular Biology and Genetics at UEA. Now studying for a PhD at UEA in how plants use sulphur compounds to cope with salt stress

Progress to Year 2 of an undergraduate degree at UEA

Start date

3 term: Sep

English language entry requirements*

3 term: IELTS 6.0 (with a minimum of 5.5 in all subskills) or equivalent.

Age requirement

17 years and above**

Prepare to progress to a degree at the University of East Anglia.

Top 125

in the world for Life Sciences

(Times Higher Education World University Rankings by Subject 2020)

Start date

3 term: Sep

English language entry requirements*

3 term: IELTS 6.0 (with a minimum of 5.5 in all subskills) or equivalent.

Age requirement

17 years and above**

Prepare to progress to a degree at the University of East Anglia.

100%

internationally-recognised research environment in Biological Sciences

(Research Excellence Framework 2014)

* If you do not meet the minimum English language requirements, you should apply for our Academic English course. See page 19 for more information.

** All students commencing courses on a September start date must be 17 years old by 31 December of that calendar year.

Progress to Year 2 of an undergraduate degree at UEA

Start date

2 term: Mar
3 term: Sep or Jan
4 term: Jul or Oct

English language entry requirements*

2 term: IELTS 5.5 (with a minimum of 5.0 in each subskill) or equivalent.

3 term: IELTS 5.0 (with a minimum of 5.0 in writing) or equivalent.

4 term: IELTS 4.5 (with a minimum of 4.5 in writing) or equivalent.

Students intending to progress to any degree with an economics element:

2 term: IELTS 6.0 (with a minimum of 5.5 in each subskill) or equivalent.

3 term: IELTS 5.5 (with a minimum of 5.5 in writing) or equivalent.

4 term: IELTS 5.0 (with a minimum of 5.0 in writing) or equivalent.

Age requirement

17 years and above**

Prepare to progress to a degree at the University of East Anglia.

Top 9

in the UK for Accounting and Finance

(The Guardian University Guide 2020)

Start date

3 term: Sep

English language entry requirements*

3 term: IELTS 5.5 (with a minimum of 5.5 in writing and no less than 5.0 in other subskills) or equivalent.

Age requirement

17 years and above**

Prepare to progress to a degree at the University of East Anglia.

25th

in the world for Development Studies

(QS World University Rankings by Subject 2020)

* If you do not meet the minimum English language requirements, you should apply for our Academic English course. See page 19 for more information.

** All students commencing courses on a September start date must be 17 years old by 31 December of that calendar year.

† While this is a non-credit bearing module, it is essential, along with your academic modules, for your progression.

International Year One

Business Management and Economics - DBM

- › In addition to the 3 and 4-term programme, there is also a shorter 2-term programme for students with a higher level of English that prepares you for quicker entry to UEA.
- › Opportunity to progress to Year 2 of an undergraduate degree in business, accounting or economics at Norwich Business School or UEA's School of Economics.

What will I study?

You will need to earn 120 credits from the following modules:

English Language and Study Skills (0 credits)†	Introductory Macroeconomics (20 credits)
Introduction to Business and Marketing (20 credits)	Introductory Microeconomics (20 credits)
Introduction to Financial and Management Accounting (20 credits)	Organisational Behaviour (20 credits)
	Quantitative Methods (20 credits)

Progress to **11** degrees. Find out more online at www.intostudy.com/uea/DBM



International Development with Media - IDM

- › Benefit from pathway modules taught alongside first year students at UEA: 'Introduction to Development Studies' and 'Humanitarian Communication'.
- › Opportunity to progress to Year 2 of an undergraduate degree in international development at UEA, with an option to study abroad or take an overseas placement.

What will I study?

You will need to earn 120 credits from the following modules:

Core modules:	Specialist modules:
English Language and Study Skills for International Development and Media (0 credits)†	Introduction to Media Studies for International Students (20 credits) or
Humanitarian Communication (20 credits)	Introduction to Natural Resources for International Students (20 credits)
Introduction to Development Studies (20 credits)	
Introduction to Economics for International Students (20 credits)	
Politics and International Development for International Students (20 credits)	
Social Anthropology and International Development for International Students (20 credits)	

Progress to **18** degrees. Find out more online at www.intostudy.com/uea/IDM

Psychology - DIPPSY

- › Benefit from pathway modules taught alongside first year students at UEA: 'Psychology of the Individual', 'Research, Design and Analysis' and 'Self and Society'.
- › Opportunity to progress to Year 2 of an undergraduate degree in an area of psychology at UEA's British Psychological Society (BPS) accredited School of Psychology.

What will I study?

You will need to earn 120 credits from the following modules:

English Language and Study Skills (0 credits)†	Research, Design and Analysis (40 credits)
Psychology of the Individual for International Students (40 credits)	Self and Society for International Students (40 credits)

Progress to **4** degrees. Find out more online at www.intostudy.com/uea/DIPPSY

International Year One progression degree options

Degree	Pathway(s)	Specific requirements	English level	Final grade
Accounting and Finance BSc (Hons)	DBM	55% in Introduction to Business, Organisational Behaviour and Introduction to Financial Management Accounting modules.	65% (with 60% in all subskills)	55%
Accounting and Management BSc (Hons)	DBM	55% in Introduction to Business, Organisational Behaviour and Introduction to Financial Management Accounting modules.	65% (with 60% in all subskills)	55%
Biological Sciences BSc (Hons) †	BLGY	40% in all UEA modules and 50% in all INTO modules.	65% (with 65% in writing and speaking)	n/a
Biological Sciences MSci	BLGY	60% in all modules.	65% (with 65% in writing and speaking)	60%
Biomedicine BSc (Hons)	BIOMED	40% in all UEA modules and 50% in all INTO modules.	65% (with 65% in writing and speaking)	n/a
Business Economics BSc (Hons)	DBM	50% in Macroeconomics, Microeconomics and Quantitative Methods modules.	65% (with 60% in all subskills)	55%
Business Finance and Economics BSc (Hons)	DBM	50% in Macroeconomics, Microeconomics and Quantitative Methods modules.	65% (with 60% in all subskills)	55%
Business Finance and Management BSc (Hons)	DBM	55% in Introduction to Business, Organisational Behaviour and Introduction to Financial Management Accounting modules.	65% (with 60% in all subskills)	55%
Business Management BA (Hons)	DBM	55% in Introduction to Business, Organisational Behaviour and Introduction to Financial Management Accounting modules.	65% (with 60% in all subskills)	55%
Cognitive Psychology BSc (Hons)	DIPPSY	40% in Research Design and Analysis, 55% in all other modules.	65% (with 60% in all subskills)	n/a
Developmental Psychology BSc (Hons)	DIPPSY	40% in Research Design and Analysis, 55% in all other modules.	65% (with 60% in all subskills)	n/a
Economics BSc (Hons)	DBM	50% in Macroeconomics, Microeconomics and Quantitative Methods modules.	65% (with 60% in all subskills)	55%
Economics and Finance BSc (Hons)	DBM	50% in Macroeconomics, Microeconomics and Quantitative Methods modules.	65% (with 60% in all subskills)	55%
Economics with Accountancy BSc (Hons)	DBM	50% in Macroeconomics, Microeconomics and Quantitative Methods modules.	65% (with 60% in all subskills)	55%
International Business Management BA (Hons)	DBM	55% in Introduction to Business, Organisational Behaviour and Introduction to Financial Management Accounting modules.	65% (with 60% in all subskills)	55%
International Development BA (Hons) † Y	IDM	40% in Development Studies, 40% in Humanitarian Communication, and 55% in 2 and 50% in 2 of 4 other modules.	65% (with 60% in all subskills)	n/a
International Development and the Environment BSc (Hons) † Y	IDM	40% in Introduction to Development Studies and Humanitarian Communication modules, 55% in Introduction to Natural Resources for Development module and 50% in all others.	65% (with 60% in all subskills)	n/a
International Development with Anthropology BA (Hons) † Y	IDM	40% in Introduction to Development Studies and Humanitarian Communication, 55% in Social Anthropology and International Development and Introduction to Media Studies, 50% in others.	65% (with 60% in all subskills)	n/a
International Development with Economics BA (Hons) † Y	IDM	40% in Introduction to Development Studies and Humanitarian Communication modules, 55% in Introduction to Economics and Introduction to Media Studies modules, 50% in all other modules.	65% (with 60% in all subskills)	n/a
International Development with Politics BA (Hons) † Y	IDM	40% in Introduction to Development Studies and Humanitarian Communication, 55% in Politics and International Development and Introduction to Media Studies, and 50% in all other modules.	65% (with 60% in all subskills)	n/a
Marketing and Management BA (Hons)	DBM	55% in Introduction to Business, Organisational Behaviour and Introduction to Financial Management Accounting modules.	65% (with 60% in all subskills)	55%
Media and International Development BA (Hons) † Y	IDM	40% in Introduction to Development Studies and Humanitarian Communication modules, 55% in Introduction to Media Studies module and 50% in all other modules.	65% (with 60% in all subskills)	n/a
Molecular Biology and Genetics BSc (Hons)	BLGY	40% in all UEA modules and 50% in all INTO modules.	65% (with 65% in writing and speaking)	n/a
Psychology BSc (Hons)	DIPPSY	40% in Research Design and Analysis, 55% in all other modules.	65% (with 60% in all subskills)	n/a
Social Psychology BSc (Hons)	DIPPSY	40% in Research Design and Analysis, 55% in all other modules.	65% (with 60% in all subskills)	n/a

Please note: English level and academic progression requirements are correct to the best of our knowledge at the time of going to print. In some circumstances, these may change throughout the year - please visit www.intostudy.com/uea/courses for the most up-to-date information.

Progress to Year 2 of an undergraduate degree at UEA

Start date

3 term: Sep

English language entry requirements*

3 term: IELTS 5.5 (with a minimum of 5.5 in writing and no less than 5.0 in other subskills) or equivalent.

Age requirement

17 years and above**

* If you do not meet the minimum English language requirements, you should apply for our Academic English course. See page 19 for more information.

** All students commencing courses on a September start date must be 17 years old by 31 December of that calendar year.

† While this is a non-credit bearing module, it is essential, along with your academic modules, for your progression.

† Degree option with a work placement also available
Y Degree option with a year abroad or overseas experience also available

Progress to a postgraduate degree at UEA

Start date

1 semester: Jan or Apr
2 semester: Sep or Jan

English language entry requirements

1 semester: IELTS 5.5 (with a minimum of 5.0 in all subskills) or equivalent.

2 semester: IELTS 5.0 (with a minimum of 4.5 in all subskills) or equivalent.

For students intending to progress to Mathematics Education, Second Language Education or Education Leadership and Management:

1 semester: IELTS 6.0 (with a minimum of 5.5 in all subskills) or equivalent.

2 semester: IELTS 5.5 (with a minimum of 5.0 in all subskills) or equivalent.

Age requirement

18 years and above*

* If you do not meet the minimum English language requirements, you should apply for our Academic English course. See page 19 for more information.

International Graduate Diploma

Business, Economics and Social Sciences

- Depending on your sub-pathway, this programme teaches you modules in Business, Economics and Social Sciences to prepare you for postgraduate studies at UEA.
- In addition to a standard 2-semester programme, there is also a shorter 1-semester (6-month) accelerated programme aimed at students with a higher level of English that prepares you for entry to a postgraduate degree at UEA in a shorter period of time.
- Conditional progression to UEA's Faculty of Social Sciences, including the AMBA and AACSB accredited Norwich Business School, or the Faculty of Arts and Humanities.

What will I study?

For the 2-semester programme, you will need to earn 120 credits from the following modules:

Core modules:

English Language and Study Skills (30 credits)
Introduction to Research (10 credits)
Quantitative Analysis (10 credits)
Social Communication Skills (0 credits)

Specialist modules –

Business and Economics sub-pathway:
Core Business (20 credits)
Entrepreneurship (30 credits)
Issues in Economics (20 credits)

Specialist modules –

Social Sciences sub-pathway:
Applied Research Skills (30 credits)
Global Issues and Development (20 credits)
Social and Cultural Studies (20 credits)

Please note: depending on your chosen sub-pathway, students on the 1-semester programme will take all core and specialist modules except Social Communication Skills

Progress to **40+** degrees. Find out more online at www.intostudy.com/uea/GDB

International Graduate Diploma progression degree options

There are more than 40 postgraduate progression degree options at the University of East Anglia. Below is a selection of some of the most popular.

Degree	Specific requirements	English level	Final grade
Accounting and Finance MSc	50% in all modules. Must have degree in Business, Accounting, Finance or Economics.	65% (with 55% in all subskills)	65%
Banking and Finance MSc	50% in all modules. Must have degree in Business, Accounting, Finance or Economics.	65% (with 55% in all subskills)	65%
Business Management MSc	50% in all modules.	65% (with 55% in all subskills)	55%
Climate Change and International Development MSc	55% in Applied Research Skills module.	65% (with 55% in all subskills)	55%
Conflict, Governance and International Development MA	55% in Applied Research Skills module.	65% (with 55% in all subskills)	55%
Economics of International Finance and Trade MSc	50% in Applied Research Skills module.	65% (with 55% in all subskills)	50%
Economics of Money, Banking and Capital Markets MSc	50% in Applied Research Skills module.	65% (with 55% in all subskills)	50%
Education and Development MA	55% in Applied Research Skills module.	65% (with 55% in all subskills)	55%
Enterprise and Business Creation MSc	50% in all modules. Must submit a business plan and pass an interview.	65% (with 55% in all subskills)	55%
Finance and Management MSc	50% in all modules.	65% (with 55% in all subskills)	55%
Gender Analysis of International Development MA	55% in Applied Research Skills module.	65% (with 55% in all subskills)	55%
Globalisation Business and Sustainable Development MA	55% in Applied Research Skills module.	65% (with 55% in all subskills)	55%
Human Resource Management MSc	50% in all modules.	65% (with 55% in all subskills)	55%
International Accounting and Financial Management MSc	50% in all modules.	65% (with 55% in all subskills)	55%
International Business Economics MSc	50% in Applied Research Skills module.	65% (with 55% in all subskills)	50%
International Business Finance and Economics MSc	50% in Applied Research Skills module.	65% (with 55% in all subskills)	50%
International Relations MA	50% in all modules.	65% (with 55% in all subskills)	50%
International Security MA	50% in all modules.	65% (with 55% in all subskills)	50%
International Social Development MA	55% in Applied Research Skills module.	65% (with 55% in all subskills)	55%
Investment and Financial Management MSc	50% in all modules.	65% (with 55% in all subskills)	55%
Marketing and Management MSc	50% in all modules.	65% (with 55% in all subskills)	55%
Media, Culture and Society MA	50% in all modules.	65% (with 55% in all subskills)	50%
Media and International Development MA	55% in Applied Research Skills module.	65% (with 55% in all subskills)	55%
Operations and Logistics Management MSc	50% in all modules. Must have a degree in a quantitative subject area, eg. Business, Accounting, Economics, Science, etc.	65% (with 55% in all subskills)	65%
Public Policy and Public Management MA	50% in all modules.	65% (with 55% in all subskills)	50%
Quantitative Financial Economics MSc	50% in Applied Research Skills module.	65% (with 55% in all subskills)	50%

Please note: English level and academic progression requirements are correct to the best of our knowledge at the time of going to print. In some circumstances, these may change throughout the year - please visit www.intostudy.com/uea/courses for the most up-to-date information.

English courses

Academic English



- For students who need to increase their IELTS level in order to progress to university. This intensive course offers rapid progress of up to one IELTS band per term.

Course features

- You will learn through face-to-face teaching and online learning to communicate effectively in English and improve your reading, writing, speaking and listening skills.
- A diverse social programme and effective academic content will help you to develop the fluency and confidence you need to progress to further study.
- Access INTO's interactive online learning platform, MyINTO, outside of class to practise your English language skills, complete tasks and engage with your classmates.
- Developed in partnership with Cambridge English, the world leader in language assessment, INTO English Language Assessment (IELA) provides a standardised online assessment of all four core language skills throughout your studies. The IELA test is available to you as an additional form of assessment and allows you to choose from a wide range of Higher Education institutions.

Pre-sessional English

- For students who are academically qualified and hold an offer from the University of East Anglia, but need to improve their English language skills to the level required for their chosen degree.

Course features

- Prepare for your degree by learning English language and study skills tailored to the requirements of university study in a 4, 6, 8, 12 or 16 week course.
- Learn from experienced teachers and alongside students who will be studying the same - or similar - subjects as you at the University.
- Study academic vocabulary related to your degree and learn how to give presentations on areas of academic interest to practise this terminology.
- Get used to living and studying in the UK and adjust to the style, challenges and expectations of the UK higher education system.

"The Academic English course significantly improved my academic vocabulary and taught me how to structure a research paper."

Fabio, Angola
Completed Academic English and progressed to MSc Advanced Computing Science at UEA. Now working as an IT Security Technician at BFA, Angola



Improve your English language skills to prepare for further academic study

Start date

16 weeks: Aug
1-4 terms: Oct, Jan, Apr or Jul

English language entry requirements

From IELTS 3.0

Age requirement

16 years and above

Class hours

30 learning hours per week, with 25 hours of face-to-face contact

Improve your English language skills to the level required by your chosen degree

Start date

16 weeks: May
12 weeks: Jun
8 weeks: Jul
4 or 6 weeks: Aug

English language entry requirements

4 weeks: achieved the IELTS level (overall and in any specified skills) required by your University School of Study, and have been accepted onto the course.

6 weeks: achieved the overall IELTS grade required by your University School of Study but have 0.5 lower than the requirement in one specified skill.

8 weeks: a maximum of 0.5 IELTS point band lower than the level required by your University School of Study, both overall and in any specified skill.

12 weeks: a maximum of one IELTS band lower than the level required by your University School of Study, both overall and in any specified skill.

16 weeks: a maximum of one IELTS band lower than the level required by your University School of Study, overall, with up to 1.5 IELTS band lower in one specified skill and one IELTS band in the others.

Age requirement

17 years and above

Class hours

20 hours per week on average

Dates and prices

The cost of your programme may vary depending on factors including the pathway chosen and programme length. The following guide to costs is based on pricing for the current academic year and provides an indication of the cost of attendance for some of our pathways. For specific cost information, please refer online: www.intostudy.com/uea/courses

Estimated cost of attendance based on prices for current academic year 2020-2021

Study length	Tuition	Accommodation	Books and fees	Airport pick up**	Insurance	Total
Academic programmes						
International Foundation (3 term)	£17,495	£6,468-£9,576	£385-£785	£357	£24,705-£28,213	£24,571-£27,701
International Foundation (4 term)	£19,995	£9,212-£12,502	£460-£860	£466	£30,133-£33,823	£31,729-£35,629
International Year One (2 term)	£15,235	£4,900-£6,650	£385	£196	£20,716-£22,466	£19,386-£20,996
International Year One (3 term)	£18,495	£6,468-£10,108	£385-£785	£357	£25,705-£29,745	£25,771-£29,419
International Graduate Diploma (1 semester)	£11,995	£3,920-£5,586	£385	£196	£16,496-£18,162	£16,386-£17,996
International Graduate Diploma (2 semester)	£18,495	£6,468-£9,576	£385	£357	£25,705-£28,813	£25,771-£28,501
English language courses						
1 term*	£4,895	£2,156-£2,926	£250	£122	£7,423-£8,193	£7,376-£8,356
16 weeks	£7,830	£3,871-£5,271	£260	£145	£12,106-£13,506	£12,024-£13,564

Start months and term dates

Academic programmes	Academic English	Pre-sessional English
March (2 term)	Mon 08 Mar 2021-Fri 27 Aug 2021	August (16 weeks) Mon 09 Aug 2021-Fri 17 Dec 2021
July (4 term)	Mon 12 Jul 2021-Fri 03 Jun 2022	June (12 weeks) Mon 28 Jun 2021-Fri 17 Sep 2021
September (3 term/2 semester)	Mon 27 Sep 2021-Fri 03 Jun 2022	July (8 weeks) Mon 26 Jul 2021-Fri 17 Sep 2021
October (4 term)	Mon 04 Oct 2021-Fri 26 Aug 2022	August (6 weeks) Mon 09 Aug 2021-Fri 17 Sep 2021
January (3 term/2 semester)	Mon 10 Jan 2022-Fri 26 Aug 2022	August (4 weeks) Mon 23 Aug 2021-Fri 17 Sep 2021
April (1 semester)	Mon 11 Apr 2022-Fri 26 Aug 2022	

Prices shown are for the current academic year of 01 September 2020 - 31 August 2021 and for indicative purposes only. All students who confirm their offer on or before 31 January 2021 will pay the 2020/2021 price as per their existing offer letter. After 31 January 2021, where tuition fees have increased, all current offers will be reissued and students will receive a new offer with the new 2021/2022 pricing. For full details of term dates, please visit the relevant course page at www.intostudy.com/uea/courses

* The price will depend on your start date and length of study. Prices shown are only for one term. Vacation weeks in between terms are extra and will be charged at the weekly accommodation price.

** Please note airport pickup is optional and is not included in the total.



Apply via your local INTO educational counsellor

If you would like us to put you in contact with one of our counsellors, please contact us.



Apply online

Complete our online application form: apply.intostudy.com



Need some help with your tuition fees?

Check to see if you're eligible for a scholarship: www.intostudy.com/uea/scholarships

Discover more online

For students:

www.intostudy.com/uea

For education counsellors:

partnerportal.intoglobal.com/uea

Connect with us



Contact us

Enquiries and applications:

ukes@intoglobal.com

or +44 1273 876040

Visit the Centre:

into@uea.ac.uk

or +44 1603 592977

Centre address details:

INTO UEA

University of East Anglia

Norwich Research Park

Norwich

Norfolk

NR4 7TJ

United Kingdom



Through innovative partnerships with leading universities, we expand opportunities for higher education, ensuring success and transforming the lives of our students and staff.

INTO GIVING

Working across the globe, INTO Giving supports projects that increase access to education and improve the quality of teaching and learning. For more information visit www.into-giving.com

Education counsellor's stamp



© INTO UEA LLP, September 2020. Every effort is made to ensure that the information provided in this document is correct at the time of publication. However, from time to time there may be occasions where some of the information has changed since the date of publication. The most up-to-date information can be found on our website at www.intostudy.com/uea - please refer to this before submitting your application. If, in our opinion, we consider that any change has been made which has a material impact on any offer that has been made to you to study with us, we will inform you of these changes in writing. The information provided in this document is subject to INTO University of East Anglia's terms and conditions, which can be accessed at www.intostudy.com/uea/terms
 INTO UEA LLP, registered number: OC332020.
 Registered office: The Registry, University of East Anglia, Norwich, Norfolk, NR4 7TJ
Education provider sponsor number XNU1YRCC2