

INTO»LONDON

WORLD EDUCATION CENTRE

2021-22



Discover your perfect university

Pathway programmes for international students

Recognised by more than 100+ UK and European universities,
our students have progressed to a wide range of universities including:



“I got to meet new people and learn something that I hadn’t studied before. This is the place where you can discover yourself!”

Chayapol, Thailand
Completed Pre-Master’s and graduated from MSc (Hons) International Management at the University of Sussex



100+ universities
Thousands of degrees
You decide!

Welcome to INTO London, where university success starts with the best preparation. We give international students like you the opportunity to study at a leading university, with guaranteed progression to hundreds of institutions across the UK and Europe.

Whatever you want to study, INTO London can help you. From traditional subjects such as Accounting, Architecture and Engineering to more unusual courses including Yacht Design, Jewellery Design and Herpetology, you’ll have thousands of degrees to choose from. If you’re not sure what subject is right for you, don’t worry – we’ve helped hundreds of students progress to higher education since the Centre opened in 2013.

You’ll complete your pathway course at our modern Study Centre in the heart of London. As an international student, there’s no better place to live and learn, with more than 100,000 international students choosing this cosmopolitan city each year.

Choosing to study abroad is a big decision, but at INTO London, we’ll give you everything you need to succeed at university and beyond.

Choose #INTOLondon and open up a lifetime of opportunities.

“INTO London has helped me develop new skills, enhance my knowledge and get into my dream university. The best thing about INTO London is the care and personal attention I have received from each and every faculty I have come across during my studies.”

Yunaisa, Bangladesh
Completed International Foundation and progressed to BA (Hons) Marketing at University of Leicester



“The placements service at INTO is so helpful. We met a lot of universities and got a lot of information – it helped us decide where we are going to go next. INTO helped us find the best university for us.”

Aman, Indonesia
Completed International Foundation and graduated from BA (Hons) International Relations at the University of Westminster

“My teacher gave me tools to deal with new information and subjects. INTO London gave me the tools that I needed for university.”

Gabriella, Chile
Completed International Foundation and graduated from BSc (Hons) Business and Management at Royal Holloway, University of London



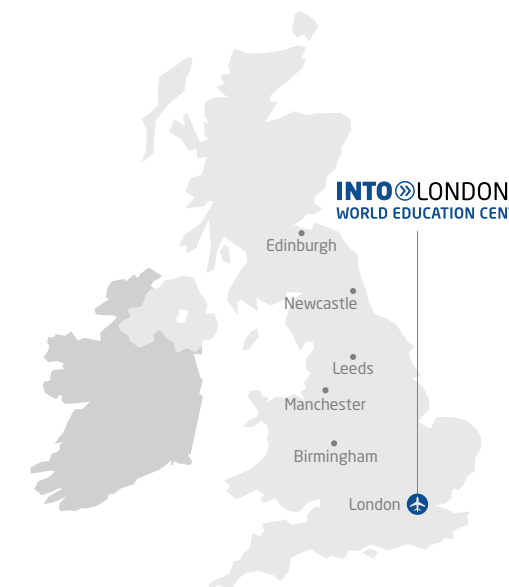
Since the Centre opened, INTO London students have received offers from:

18 of the 24
Russell Group
universities

11 of the 18
UK universities
ranked **top 100**
in the world

(QS World University Rankings 2021)

25+
London-based
universities



93%

of INTO London students who completed their course were eligible to progress to a UK university

(2018-19 results)

BEST

city in the world for students

(QS Best Student Cities 2019)

Supporting your university application

Choosing to study abroad is a big decision, but at INTO London, we are here to support you on the journey towards your perfect degree at your perfect university.

Choosing your university

No matter your goal, at INTO London, we are committed to helping you reach it. We offer a guaranteed pathway to more than 100 universities in the UK and Europe – and with thousands of degree programmes to choose from, you'll be spoilt for choice.

Can't decide? Don't worry – while you're focusing on your studies, we're getting to know you, so we can offer personalised support to help you choose. This includes:

- regular one-to-one sessions with a member of our **Student Placement Team**, where you can discuss your options in detail
- our annual **Placement Fair**, which gives you the opportunity to speak to representatives from more than 50 UK universities
- **University Masterclasses**, where you'll gain essential application skills such as writing a personal statement and preparing a portfolio
- additional support if you are applying to a top university, such as **preparation for university interviews** with practice interviews



London-based universities:



94%
student satisfaction
for advice on university
progression options
(INTO Annual Student Experience Survey 2019)



Since the Centre opened, INTO London students have left us destined to progress to a range of **top 100 worldwide** and **Russell Group** universities including:

Russell Group and UK top 30* universities:

Other popular universities:

* The Complete University Guide 2021

INTO London students have also progressed to universities ranked in the **top 100 worldwide for specific subjects****, including:

<p>Art and Design</p> <ul style="list-style-type: none"> • University of the Arts London • Goldsmiths, University of London • Kingston University • Lancaster University • Nottingham Trent University 	<p>Business and Management</p> <ul style="list-style-type: none"> • Aston University • Lancaster University • Oxford Brookes University 	<p>Communication and Media Studies</p> <ul style="list-style-type: none"> • Cardiff University • University of Westminster • Goldsmiths, University of London
<p>Hospitality and Leisure Management</p> <ul style="list-style-type: none"> • Oxford Brookes University • Bournemouth University • University of Surrey 	<p>Sports-related subjects</p> <ul style="list-style-type: none"> • Brunel University London • Liverpool John Moores University 	

* QS World University Rankings 2021
** QS World University Rankings by Subject 2020

Discover London

Immerse yourself in local London with cool markets, street art and fashionable shops, or the bright lights and big attractions of the capital. Whoever you are and whatever you like, you'll love living in the heart of one of the world's most multicultural cities.



Estimated living costs

As well as your tuition fees, you will need to budget for a minimum of £1,265* per month to cover your living costs in London.

*in line with current UKVI requirements



London on your doorstep

INTO London's central location combines the professional buzz of London's financial district with the creative culture of nearby Shoreditch. You'll be in the perfect place to discover everything London has to offer, including:

- world-famous landmarks such as **Buckingham Palace**, where the Royal Family live
- free museums like the **Tate Modern** and the **Museum of Natural History**
- **Oxford Street, Harrods** and **Selfridges** for the ultimate shopping experience
- independent stalls and vintage shops at **Camden Market**
- **West End** theatre shows and musicals

Global cuisine

London is a melting pot of cultures and communities, so you'll have no problem finding tasty and authentic food from all over the world. For global food within easy reach of the Centre, visit:

- **Spitalfields, Petticoat Lane** and **Dinerama** street food markets
- **Chinatown**, for delicious East Asian cuisine
- **Brick Lane**, for delicious South Asian cuisine
- stylish dining along the **South Bank**

Sport in the city

Whether you prefer playing or watching, London is home to some of the world's best sporting venues. You could:

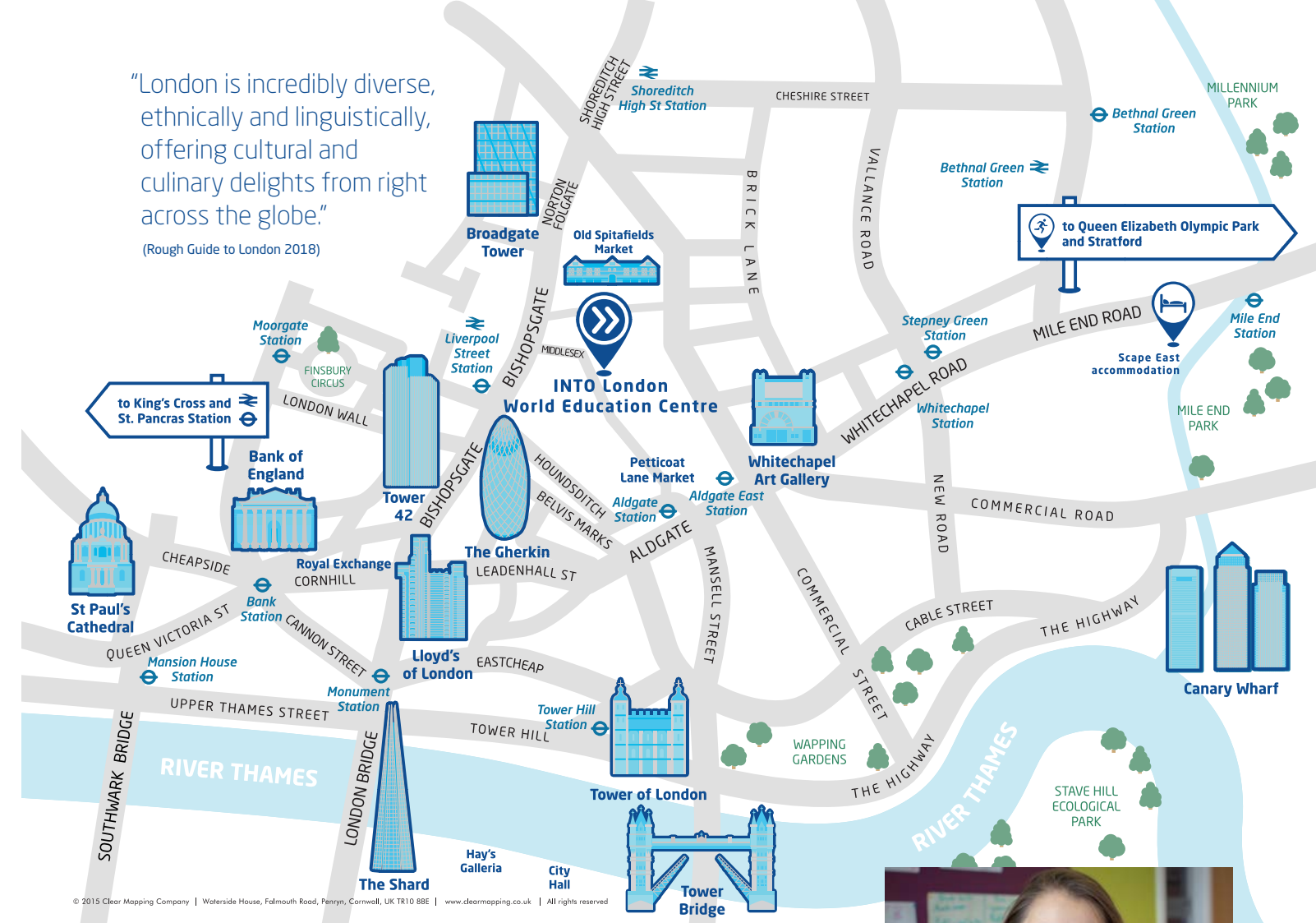
- watch football at **Wembley Stadium**
- enjoy rugby at **Twickenham**
- experience tennis at **Wimbledon**
- visit the **Queen Elizabeth Olympic Park** to use world-class sports facilities

Exploring London and beyond

Thanks to excellent public transport, exploring London couldn't be easier. Nearby **Liverpool Street Station** will help you travel to other UK cities, and the Eurostar and several international airports will take you even further afield.

"London is incredibly diverse, ethnically and linguistically, offering cultural and culinary delights from right across the globe."

(Rough Guide to London 2018)



"I think INTO London is a nice place for studying because there are a lot of shops, cafeterias, restaurants and places to hang out."

Alua, Kazakhstan
Completed International Foundation and progressed to BA (Hons) Management with Marketing at Royal Holloway, University of London



Life at the Centre

A modern building with excellent facilities and an exciting programme of activities, all in the heart of London – the world’s best student city. There is truly no better place to study.

91%
overall student satisfaction
(INTO Annual Student Experience Survey 2019)



Your Study Centre

The INTO Study Centre is fully equipped with everything you need to succeed on your pathway course. Inside the Centre, you'll find:

- a diverse international student community from more than 45 nationalities
- the **Learning Resource Centre**, with books, journals and study materials
- modern teaching rooms
- lots of space for studying, socialising and group work
- a selection of drinks, meals and snacks at the **INTO Café**

Art and Design students will also have access to an **Art Studio** that is equipped with tools and materials for a wide variety of art forms.

While most pathway courses will be taught entirely at the Centre, students on the Science stream can also gain practical experience in fully equipped laboratories.

Supporting you

Studying in another country can be a big adjustment, but our **Student Services team** will help you settle in to life in London. Throughout your time at the Centre, you'll have access to a range of excellent services, such as:

- help opening a bank account and registering with a doctor
- a 24-hour emergency helpline if you need to speak to staff during out-of-office hours
- an academic coach, who can help you develop effective skills for academic study

If you're under 18, we offer extra support including ensuring your safe transfer from the airport and checking on you each day at your residence. You'll be given a dedicated named person to contact to ensure your wellbeing and you'll receive a copy of our code of conduct, which you must follow – especially outside class when you will be unsupervised.

For more information on our policies including a copy of our Under 18 Policy, visit: www.intostudy.com/into-london/terms

Get involved and make friends

From the moment you arrive, you can get involved in exciting social events, giving you the opportunity to get to know your new classmates, explore the sights of London and make lifelong memories. You'll enjoy:

- a fun-filled orientation programme in your first week
- day trips, excursions and celebrations, which have included a boat cruise on the **River Thames** and visits to **Cambridge** and **Windsor Castle**
- a variety of sporting activities including football and basketball

Home from home

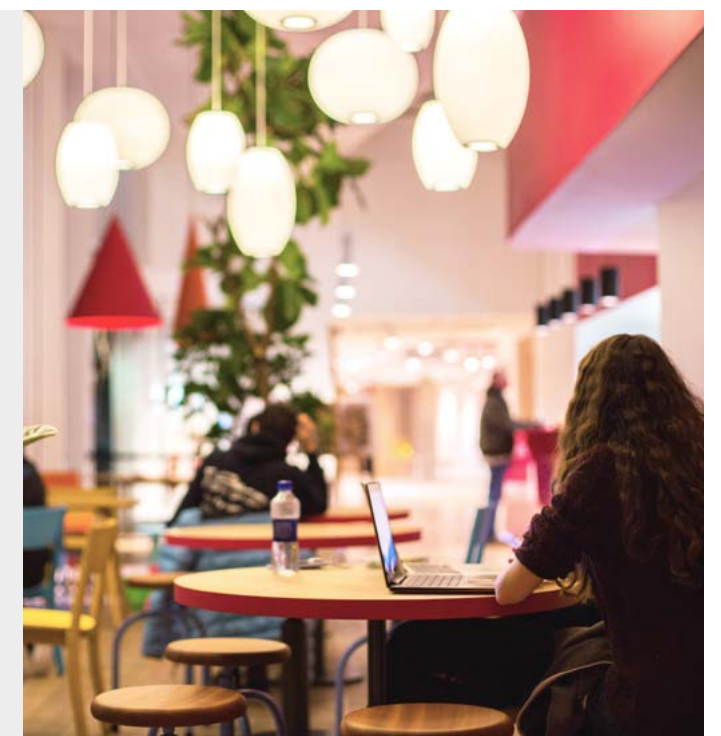
With a choice of accommodation options, including student residence within easy reach of the Centre and homestay accommodation with approved hosts, it's easy for you to find the perfect place to call home.

Scape East

These modern flats are just 20 minutes by Underground from the Centre, and offer bright and vibrant communal areas to catch up with friends. Your studio room has a private bathroom and kitchenette, but if you don't fancy cooking, there's an on-site restaurant. You can even choose to book your accommodation with a meal plan option and have breakfast and lunch or dinner cooked for you at the on-site restaurant.



- En suite bathroom
- Communal areas
- Laundry facilities
- Wi-Fi
- 24/7 staff
- Gym facilities
- Accepts under 18s
- **20 MIN** by Underground to INTO Centre



Homestay

This is a unique opportunity to experience British life and culture first hand. You will have a private room in a carefully selected host's home, sharing mealtimes and living spaces.

Other accommodation options may become available throughout the year, so check online for the most up-to-date information: www.myin.to/AccommodationOptions

Supporting you

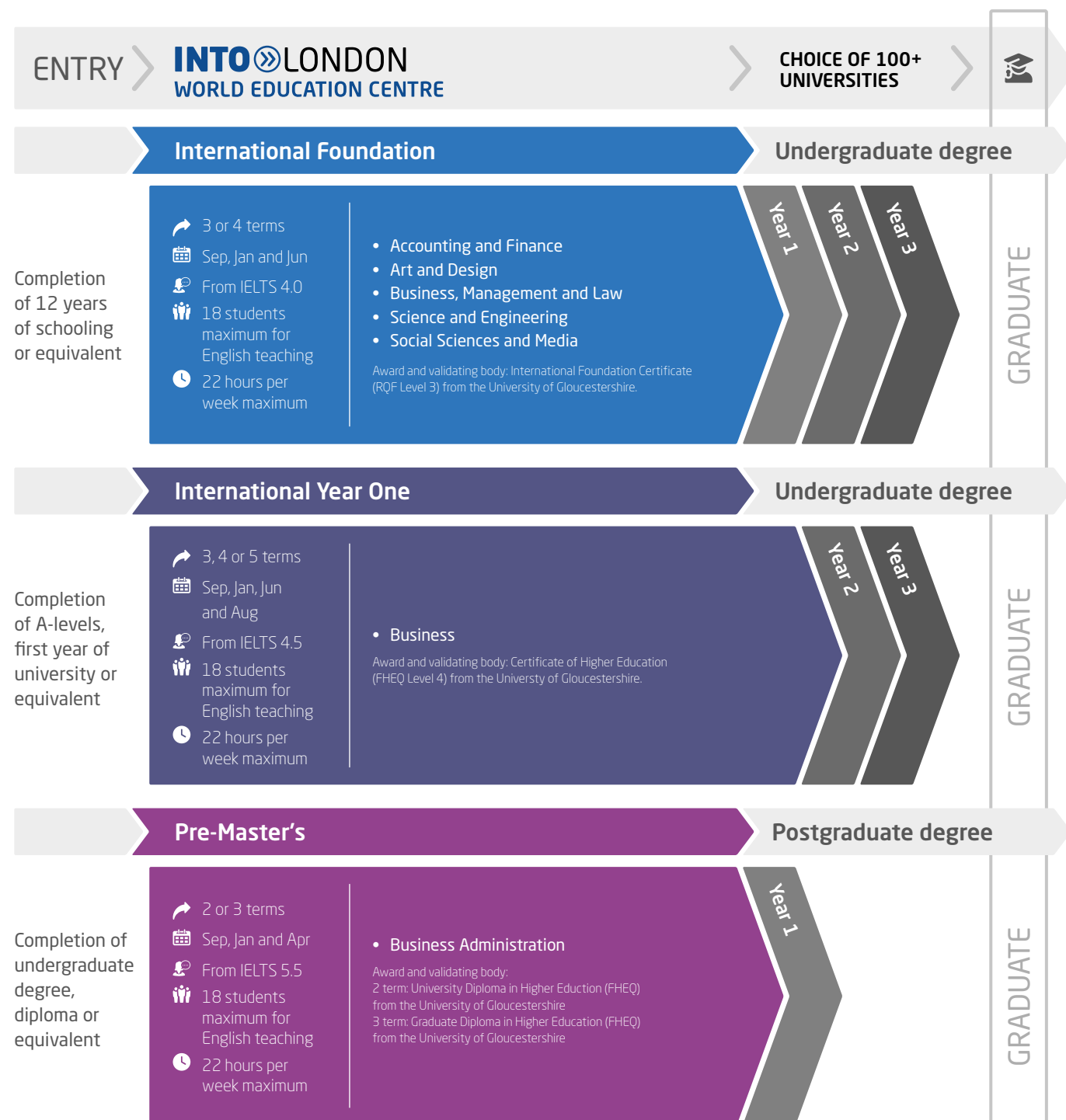
In the residence, you'll find staff available 24/7 to offer support, and we'll also provide you with a 24-hour emergency telephone number. If you're under 18 and living in INTO managed accommodation or in homestay, we offer extra support from residential wardens or homestay hosts, as well as checking on you each day at the student residence where you live.

95%
student satisfaction for living experience
(INTO Annual Student Experience Survey 2019)

INTO London World Education Centre aims to provide the accommodation requested. However, there may be occasions when INTO London World Education Centre is unable to provide the requested accommodation and reserves the right to offer an alternative type of accommodation instead. The price for any alternative accommodation may differ and will be confirmed to students at the time of their offer.

Choosing your course

Prepare for your university degree with our tailored academic pathway programmes. You'll benefit from university-style teaching for subject-based modules and high academic standards by choosing one of our programmes. Then, when it comes to progressing to your chosen degree, we'll support you with your university application.



Please note that course length and start month options may vary depending on the pathway chosen. Please visit www.intostudy.com/into-london/courses for full information.

International Foundation

Accounting and Finance - IFAF

> Learn to apply accounting theories to real-life situations.

What will I study?

You will need to earn 120 credits from the following module options to successfully complete your pathway programme:

Core modules

World of Business (15 credits)
Introduction to Accounting (15 credits)
Introduction to Finance (15 credits)
Critical Thinking and Communication Skills (15 credits)
English Language for Foundation Study (0-45 credits)*

Optional modules

Concepts and Applications of Advanced Mathematics (15 credits)
Economics (15 credits)
Global Issues (15 credits)
Introduction to Statistics and Probability (15 credits)
Marketing (15 credits)
World of Business (15 credits)

Progress to **95+** universities. Find out more online www.intostudy.com/into-london/IFAF

Art and Design - IFAD

> Enjoy practical learning in INTO London's Art and Design studio.

What will I study?

You will need to earn 120 credits from the following module options to successfully complete your pathway programme:

Core modules

Art and Design Practice (15 credits)
Self-initiated Project (15 credits)
Final Major Project for Art and Design (15 credits)
Concepts in Art and Design (15 credits)
Study Skills for Art and Design (15 credits)
English language for Foundation Study (0-45 credits)*

Optional modules

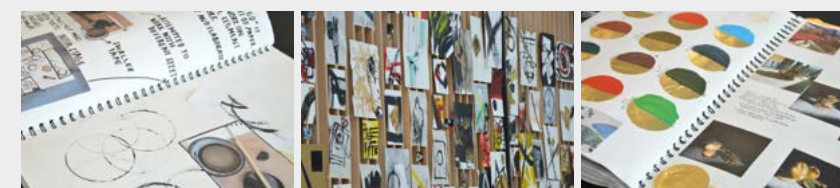
Applications of Digital Technology in Contemporary Projects (15 credits)
Global Issues (15 credits)

Progress to **60+** degrees. Find out more online www.intostudy.com/into-london/IFAD



"The teachers provided me with help on my portfolio, choosing the right photos and preparing me for interviews. You have the opportunity to go beyond your capabilities at INTO London."

Dafinah, Singapore
Completed International Foundation in Art and Design and graduated with 1st class honours in BA (Hons) Drawing at University of the Arts London.



* If your level of English is IELTS 4.5, you will study towards the maximum number of English language credits. If you have a higher level, you may study fewer or no English language modules and more optional modules.

Progress to Year 1 of an undergraduate degree at a UK university

Start date

3 term: Sep or Jan
4 term: Jun or Sep

English language entry requirements*

3 term: IELTS 4.5 (with a minimum of 4.0 in all subskills) or equivalent
4 term: IELTS 4.0 (with a minimum of 4.0 in all subskills) or equivalent

Age requirement

16 years and above**

* If you do not meet the minimum English language requirements, you should apply for our Academic English course. See page 18 for more information.

** All students commencing courses for the June start must be 16 years old before registering at the Centre. All students commencing courses for the September start must be 16 years old before 01 September that calendar year. All students commencing courses for the January start must have turned 16 years old before 01 September of the previous calendar year.

INTO London students have previously received offers from:

Queen Mary, University of London

Top 50

in the UK

(The Times and The Sunday Times Good University Guide 2020)

University of Birmingham

Top 100

in the world for Accounting and Finance

(QS World University Rankings by Subject 2020)

University of the Arts London

2nd

in the world for Art and Design

(QS World University Rankings by Subject 2020)

Goldsmiths, University of London

Top 15

in the world for Art and Design

(QS World University Rankings by Subject 2020)

Progress to Year 1 of an undergraduate degree at a UK university

Start date

3 term: Sep or Jan
4 term: Jun or Sep

English language entry requirements*

3 term: IELTS 4.5 (with a minimum of 4.0 in all subskills) or equivalent
4 term: IELTS 4.0 (with a minimum of 4.0 in all subskills) or equivalent

Age requirement

16 years and above**

* If you do not meet the minimum English language requirements, you should apply for our Academic English course. See page 18 for more information.

** All students commencing courses for the June start must be 16 years old before registering at the Centre. All students commencing courses for the September start must be 16 years old before 01 September that calendar year. All students commencing courses for the January start must have turned 16 years old before 01 September of the previous calendar year.

INTO London students have previously received offers from:

University of Birmingham



in the world

(QS World University Ranking 2021)

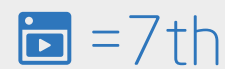
Lancaster University



in the world for Business and Management

(QS World University Rankings by Subject 2020)

Goldsmiths, University of London



in the world for Communication and Media Studies

(QS World University Rankings by Subject 2020)

International Foundation

Business, Management and Law - IFBML

- > Learn outside the classroom with interactive field trips in commercial settings to encourage entrepreneurship.

What will I study?

You will need to earn 120 credits from the following module options to successfully complete your pathway programme:

Core modules

World of Business (15 credits)
Economics (15 credits)
Introduction to Law and Legal Systems (15 credits)
Critical Thinking and Communication Skills (15 credits)
English Language for Foundation Study (0-45 credits)*

Optional modules

Concepts and Applications of Advanced Mathematics (15 credits)
Global Issues (15 credits)
Introduction to Statistics and Probability (15 credits)
Operational Skills for Hospitality, Events and Tourism (15 credits)

Progress to **100+** universities. Find out more online www.intostudy.com/into-london/IFBML

Social Sciences and Media - IFSSM

- > Develop independent study skills through a media project and analyse key concepts in social sciences.

What will I study?

You will need to earn 120 credits from the following module options to successfully complete your pathway programme:

Core modules

Psychology (15 credits)
Sociology (15 credits)
Critical Thinking and Communication Skills (15 credits)
English Language for Foundation Study (0-45 credits)*

Optional modules

Economics (15 credits)
Global Issues (15 credits)
Media and Communications (15 credits)
Media Project (15 credits)
Politics and Political Systems (15 credits)

Progress to **60+** universities. Find out more online www.intostudy.com/into-london/IFSSM

Some of our best performing students from the 2018-19 cohort left us destined to progress to:

 Queen Mary, University of London Accounting and Management Nationality: Indonesia Grade: 82%	 University of Southampton Computer Science Nationality: China Grade: 79%
 University of Nottingham Food Science Nationality: Indonesia Grade: 76%	 University of Birmingham Economics Nationality: Taiwan Grade: 73%

91%
of Foundation students were eligible to progress to a UK university
(18/19 cohort who completed their programme)

* If your level of English is IELTS 4.5, you will study towards the maximum number of English language credits. If you have a higher level, you may study fewer or no English language modules and more optional modules.

International Foundation

Science and Engineering - IFSE

- > Enhance your scientific knowledge and gain practical skills in fully equipped labs.

What will I study?

You will need to earn 120 credits from the following module options to successfully complete your pathway programme:

Core modules

English Language for Foundation Study (0-45 credits)*
Introductory Mathematics for the Sciences (15 credits)

Optional modules

Engineering pathway:
Introduction to Biology (15 credits)
Introduction to Chemistry (15 credits)
Science Foundation Project (15 credits)

Engineering pathway:

Electricity, Electrical Fields and Electromagnetism (15 credits)
Further Mathematics for the Sciences (15 credits)
Introduction to Mechanics, Power and Materials (15 credits)
Thermal Physics and Dynamics (15 credits)

Science pathway:

Further Mathematics for the Sciences (15 credits)
Introduction to Mechanics, Power and Materials (15 credits)
Science Foundation Project (15 credits)

Science pathway:

Biochemistry and Further Chemistry (30 credits)
Introduction to Biology (15 credits)
Introduction to Chemistry (15 credits)

Progress to **80+** universities. Find out more online www.intostudy.com/into-london/IFSE



INTO London students at London Metropolitan University's SuperLab

"The teachers at INTO have lots of experience to help you – they gave us practical exercises to better understand the material and prepare us for university study. INTO made me feel confident that I could get into the University of York."

Jiawei, China

Completed International Foundation in Science and Engineering and progressed to BEng (Hons) Computer Science at the University of York



* If your level of English is IELTS 4.5, you will study towards the maximum number of English language credits. If you have a higher level, you may study fewer or no English language modules and more optional modules.

Progress to Year 1 of an undergraduate degree at a UK university

Start date

3 term: Sep or Jan
4 term: Jun or Sep

English language entry requirements*

3 term: IELTS 4.5 (with a minimum of 4.0 in all subskills) or equivalent
4 term: IELTS 4.0 (with a minimum of 4.0 in all subskills) or equivalent

Age requirement

16 years and above**

* If you do not meet the minimum English language requirements, you should apply for our Academic English course. See page 18 for more information.

** All students commencing courses for the June start must be 16 years old before registering at the Centre. All students commencing courses for the September start must be 16 years old before 01 September that calendar year. All students commencing courses for the January start must have turned 16 years old before 01 September of the previous calendar year.

INTO London Science and Engineering students have previously received offers from:

University of Leeds



in the world

(QS World University Rankings 2021)

King's College London



in the world for Biological Sciences

(QS World University Rankings by Subject 2020)

University of Nottingham



in the world

(QS World University Rankings 2021)

University of Edinburgh



in the world

(QS World University Rankings 2021)

Find your course

Progressing from Foundation to university

The following table provides information about the typical grade ranges each university will require from an INTO London student for them to receive an offer of a place in September 2022. We've only included the details for some of the most popular universities and subject areas. These progression grades are a guideline and once you begin studying with us, we will guide and support you through the university application process to find your 'best fit' university. Detailed progression requirements will be set out in any offer letter that you receive from a university.

University	Accounting and Finance <ul style="list-style-type: none"> Accounting Economics Finance Investment Mathematics 	Architecture <ul style="list-style-type: none"> Architecture Construction Management Quantity Surveying 	Art and Design <ul style="list-style-type: none"> Animation Fashion Design* Fashion Marketing /Management Fine Art Graphic Design Illustration Photography Textiles* 	Business and Management <ul style="list-style-type: none"> Business Studies Human Resource Management Management Marketing 	Computing <ul style="list-style-type: none"> Business Information Systems Computer Games Design Computing Information Systems 	Engineering <ul style="list-style-type: none"> Aeronautical Aerospace Automotive Chemical Civil Electrical Mechanical Medical Petroleum Renewable Software 	Hospitality and Tourism <ul style="list-style-type: none"> Events Management Hospitality Management Tourism Management 	Humanities <ul style="list-style-type: none"> Archaeology Development Studies Education Geography History Liberal Arts Modern Languages Music* 	Law <ul style="list-style-type: none"> Criminology Law 	Media <ul style="list-style-type: none"> Advertising Digital Media Film Production Journalism Media Studies 	Psychology <ul style="list-style-type: none"> Psychology 	Science <ul style="list-style-type: none"> Biological and Biomedical Sciences Chemistry Pharmacology Pharmacy and Pharmaceutical Science Physics Zoology 	Social Science <ul style="list-style-type: none"> Criminology International Relations Politics Sociology 	Sport and Exercise <ul style="list-style-type: none"> Exercise and Sport Sciences
Aston University	60-70%	70% or above	-	60-70%	70% or above	70% or above	-	60-70%	60-70%	-	70% or above	60-70%	60-70%	-
Birkbeck, University of London	60-70%	-	-	60-70%	60-70%	60-70%	-	60-70%	60-70%	60-70%	60-70%	60-70%	60-70%	-
Brunel University	50-60%	-	60-70% P	50-60%	50-60%	50-60%	-	50-60%	50-60%	50-60%	50-60%	50-60%	50-60%	50-60%
Cardiff University	60-70%	70% or above	-	60-70%	60-70%	60-70%	-	60-70%	60-70%	60-70%	60-70%	60-70%	60-70%	-
Coventry University	Pass to 50%	Pass to 50%	Pass to 50%	Pass to 50%	Pass to 50%	Pass to 50%	Pass to 50%	Pass to 50%	Pass to 50%	Pass to 50%	Pass to 50%	Pass to 50%	Pass to 50%	Pass to 50%
Goldsmiths, University of London	60-70%	-	60-70%	60-70%	60-70%	-	-	60-70%	60-70%	60-70%	60-70%	-	60-70%	-
Keele University	50-60%	-	-	50-60%	60-65%	-	-	50-65%	60-70%	50-60%	60-70%	60-70%	50-65%	-
Kingston University	60-70%	60-70%	55-65% I	60-70%	60-70%	60-70%	-	50-60%	60-70%	50-60%	60-70%	60-70% I	50-60%	-
Lancaster University	70% or above	-	70% or above	70% or above	70% or above	70% or above	70% or above	70% or above	70% or above	70% or above	70% or above	70% or above	70% or above	70% or above
Loughborough University	60-70%	70% or above	70% or above	70% or above	60-70%	70% or above	-	60-70%	60-70%	70% or above	70% or above	70% or above	60-70%	60-70%
Manchester Metropolitan University	50-60%	70% or above P	50-60%	50-60%	50-60%	50-60%	50-60%	50-60%	50-60%	50-60%	50-60%	50-60%	50-60%	50-60%
Middlesex University	60-70%	-	60-70% P	60-70%	60-70%	60-70%	60-70%	60-70%	70% or above	60-70%	-	-	60-70%	60-70%
Newcastle University London	70% or above	-	-	70% or above	-	-	-	-	-	-	-	-	-	-
Northumbria University	50-60%	50-60%	50-60%	50-60%	50-60%	50-60%	50-60%	50-60%	50-60%	50-60%	50-60%	50-60%	50-60%	50-60%
Oxford Brookes University	50-60%	60-70%	50-60%	50-60%	50-60%	60-70%	50-60%	50-60%	50-60%	50-60%	60-70%	50-60%	50-60%	50-60%
Queen Mary, University of London	70% or above	-	-	60-70%	70% or above	70% or above	-	70% or above	-	-	-	60-70%	70% or above	-
Queen's University Belfast	60-70%	70% or above	-	60-70%	60-70%	60-70%	-	60-70%	70% or above	-	60-70%	65-70%	60-70%	-
Regent's University London	50-60%	-	50-60% P I	50-60%	-	-	50-60%	50-60%	-	50-60% I	50-60%	-	50-60%	-
Royal Holloway, University of London	60-70%	-	-	60-70%	60-70%	60-70%	-	60-70%	70% or above	60-70%	70% or above	60-70%	60-70%	-
SOAS, University of London	70% or above	-	-	70% or above	70% or above	-	-	70% or above	70% or above	-	-	70% or above	70% or above	-
Swansea University	50-60%	50-60%	50-60%	50-60%	50-60%	50-60%	50-60%	50-60%	50-60%	50-60%	50-60%	50-60%	50-60%	50-60%
University of Aberdeen	60-70%	-	-	60-70%	60-70%	60-70%	-	60-70%	70% or above	-	60-70%	60-70%	60-70%	60-70%
University of Birmingham	60-70%	-	-	60-70%	-	70% or above	-	60-70%	70% or above	-	70% or above	70% or above	60-70%	60-70%
University of Brighton	50-60%	60-70% P I	50-60% P I	50-60%	50-60%	50-60%	50-60%	50-60% I	50-60%	50-60%	50-60%	50-60%	50-60%	50-60%
University of Dundee	50-60%	50-60%	50-60%	50-60%	50-60%	50-60%	-	50-60%	50-60%	-	50-60%	50-60%	50-60%	-
University of Essex	60-70%	-	-	60-70%	60-70%	60-70%	55-70%	60-70%	60-70%	60-70%	60-70%	60-70%	60-70%	60-70%
University of Kent	60-70%	70% or above P	60-70%	60-70%	60-70%	60-70%	-	60-70%	70% or above	60-70%	60-70%	60-70%	60-70%	-
University of Leicester	70% or above	-	-	70% or above	60-70%	60-70%	-	60-70%	70% or above	60-70%	-	60-70%	60-70%	-
University of Lincoln	60-70%	-	50-60%	50-60%	50-60%	50-60%	50-60%	50-60%	50-60%	50-60%	60-70%	50-60%	50-60%	60-70%
University of Southampton	70% or above	-	60-70%	70% or above	70% or above	70% or above	-	70% or above	70% or above	-	70% or above	70% or above	70% or above	-
University of Strathclyde	60-70%	60-70%	60-70%	60-70%	60-70%	60-70%	60-70%	60-70%	60-70%	60-70%	60-70%	60-70%	60-70%	60-70%
University of Surrey	60-70%	-	-	60-70%	60-70%	60-70%	60-70%	-	60-70%	60-70%	60-70%	60-70%	60-70%	60-70%
University of Sussex	60-70%	-	-	60-70%	60-70%	60-70%	-	60-70%	60-70%	60-70%	60-70%	60-70%	60-70%	-
University of the West of England Bristol	50-60%	60-70%	50-60% P	50-60%	50-60%	60-70%	50-60%	50-60%	50-60%	50-60%	50-60%	50-70% I	50-60%	50-60%
University of Westminster	50-60%	60-70% P I	50-60% P I	50-60%	50-60%	-	50-60%	50-60%	50-60%	60-70%	50-60%	50-60%	50-60%	-
University of York	70% or above	-	-	70% or above	70% or above	-	-	70% or above	70% or above	70% or above	70% or above	70% or above	70% or above	-

P Portfolio assessed
I Interview required
 * For progression to these subject areas, you may need to demonstrate evidence of previous experience in these specialisms. Universities reserve the rights to change the entry requirements. For the latest information contact the Centre. Previous educational performance and personal statements may be considered in your university admission by some universities.

Progress to Year 2 of an undergraduate degree at a UK university

Start date

3 term: Sep or Jan
4 term: Jun or Sep
5 term: Aug

English language entry requirements*

3 term: IELTS 5.5 (with a minimum of 5.5 in writing) or equivalent
4 term: IELTS 5.0 (with a minimum of 5.0 in writing) or equivalent
5 term: IELTS 4.5 (with a minimum of 4.5 in writing) or equivalent

Age requirement

16 years and above**

* If you do not meet the minimum English language requirements, you should apply for our Academic English course. See page 18 for more information.

** All students commencing courses for the June start must be 16 years old before registering at the Centre. All students commencing courses for the September start must be 16 years old before 01 September that calendar year. All students commencing courses for the January start must have turned 16 years old before 01 September of the previous calendar year.

INTO London students have previously received offers from:

University of Aberdeen

Top 15

in the UK for Business and Management Studies

(The Complete University Guide 2021)

Newcastle University

Top 30

in the UK

(The Times and The Sunday Times Good University Guide 2020)

Brunel University and the University of Westminster

which are both located in

vibrant central London

International Year One

Business - IYOB

- > Guaranteed conditional offer of a Year 2 place at Aston University's triple accredited Business School.
- > Degree options include Business, Economics, Finance, Human Resource Management and Accounting.

What will I study?

You will need to earn 120 subject credits from the following module options to successfully complete your pathway programme:

Business and Management (15 credits)	Intermediate Law (15 credits)
English Language for Foundation Study (0-30 credits)	International Marketing or Financial Reporting and Decision Making (15 credits)
Intermediate Accounting (15 credits)	Quantitative Methods (15 credits)
Intermediate Economics (15 credits)	Study Skills (15 credits)
Intermediate Finance (15 credits)	

Progress to **45+** universities. Find out more online at www.intostudy.com/into-london/IYOB

Progression options

If you can't see the university you want to study at, or want to look at all progression universities, check our full list at www.intostudy.com/into-london/IYOB



Guaranteed conditional offer

Receive a conditional offer for a Year 2 place at Aston University's Business School when you study International Year One at INTO London.

Key facts about Aston University



Top 100
in the world for Business and Management Studies*



Top 200
in the world for Accounting and Finance*



Triple accredited
Business School



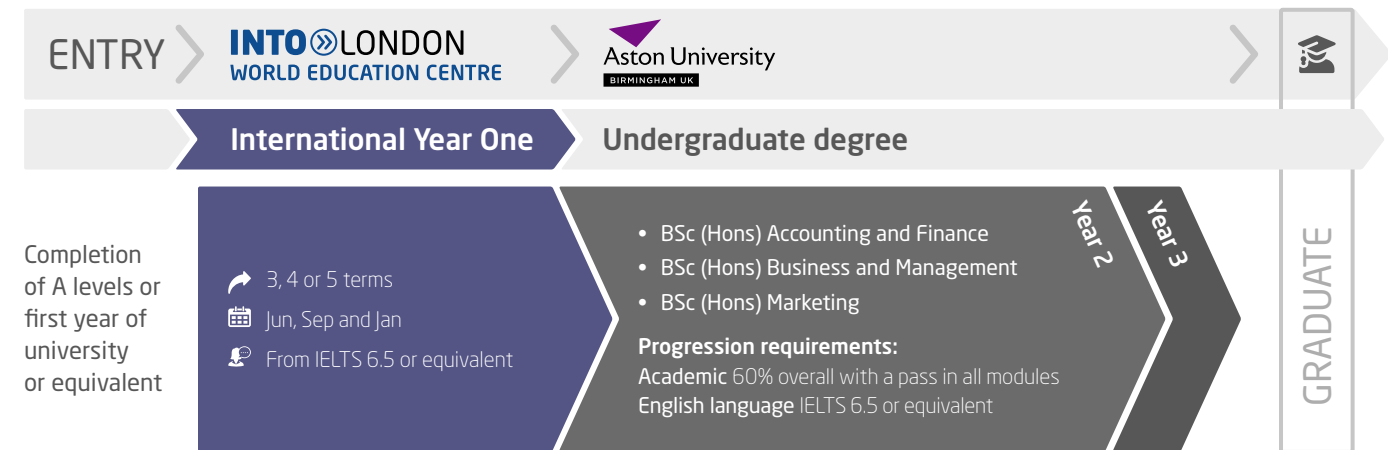
Gold
for teaching quality**



£3,000 Aston University partnership scholarships available to high-achieving students at INTO London.†
www.intostudy.com/into-london/scholarships

† Awarded to the students with the best overall performance on the International Year One in Business. Recipient will undertake ambassadorial duties and student profiling for marketing purposes.

*QS World University Rankings by Subject 2020 **Teaching Excellence Framework 2017



100%
of International Year One students were eligible to progress to a UK university
(18/19 cohort)



"INTO London World Education Centre consolidated the fundamentals of my first year in the UK and provided the knowledge I needed to enter my second-year studies in Marketing at Aston University successfully."
Kah Seng, Malaysia
Completed International Year One in Business and progressed to BSc (Hons) Marketing at Aston University

Progress to a postgraduate degree at a UK university

Start date

2 term: Jan or Apr
3 term: Sep or Jan

English language entry requirements*

2 term: IELTS 6.0 (with a minimum of 6.0 in writing and 5.5 in all other subskills) or equivalent

3 term: IELTS 5.5 (with a minimum of 5.5 in all subskills) or equivalent

Age requirement

17 years and above

* If you do not meet the minimum English language requirements, you should apply for our Academic English course. See below for more information.

INTO London students have progressed to:

Queen Mary, University of London and Exeter University

two of the UK's 24

Russell Group

universities

Pre-Master's

Business Administration - PMBA

> Study in one of the world's business capitals and immerse yourself in the industry through interactive field trips.

What will I study?

You will need to earn 120 credits from the following module options to successfully complete your pathway programme:

120 version (Graduate Diploma)	90 credit version (Level 6 University Diploma)
<p>Core</p> <ul style="list-style-type: none"> Business Administration (15 Credits) Statistical Analysis for Business (15 Credits) Accounting: Financial, Management and Reporting (15 Credits) Economics and International Trade (15 Credits) Research Project (30 Credits) Academic English for Graduate Study (0 Credits) Academic English for Taught Postgraduate Study (0 Credits) <p>Optional Specialist Modules:</p> <ul style="list-style-type: none"> Human Resource Management (15 Credits) International Marketing (15 Credits) Banking, Finance, Risk (15 Credits) Financial Reporting and Decision Making (15 credits) 	<p>Core</p> <ul style="list-style-type: none"> Accounting: Financial, Management and Reporting (15 Credits) Economics and International Trade (15 Credits) Research Project (30 Credits) <p>Optional Specialist Modules:</p> <ul style="list-style-type: none"> Human Resource Management (15 Credits) International Marketing (15 Credits) Banking, Finance, Risk (15 Credits) Financial Reporting and Decision Making (15 credits) Academic English for Taught Postgraduate Study (0 Credits)

Progress to **80+** universities. Find out more online www.intostudy.com/into-london/PMBA

Some of our best performing students left us destined to progress to:



Entrepreneurship and Innovation Management
Nationality: Ukraine Grade: 76%



Marketing
Nationality: Indonesia Grade: 71%



Accountancy and Finance Management
Nationality: Vietnam Grade: 65%

Progressing from Pre-Master's to university

The following table provides information about the typical grade ranges each university will require from an INTO London student for them to receive an offer of a place in September 2022. We've only included the details for some of the most popular universities and subject areas. These progression grades are a guideline and once you begin studying with us, we will guide and support you through the university application process to find your 'best fit' university. Detailed progression requirements will be set out in any offer letter that you receive from a university.

100%
of Pre-Master's students were eligible to progress to a UK university
(18/19 cohort who completed their programme)

University	Accounting and Finance	Business and Management	Management-related subjects	Social Science
	<ul style="list-style-type: none"> Accounting Banking Economics Finance Investment 	<ul style="list-style-type: none"> Business Studies Management Risk Management Business Information Systems Business Studies 	<ul style="list-style-type: none"> Advertising and Brand Management Human Resource Management Marketing Risk Management 	<ul style="list-style-type: none"> Hospitality, Tourism and Event Management Law Media Studies/Journalism Politics/International Relations
Aston University	PMBA *60-70%	PMBA *60-70%	PMBA *60-70%	PMBA *60-70%
Birkbeck, University of London	PMBA *60-70%	PMBA *60-70%	PMBA *60-70%	PMBA *60-70%
Coventry University	Pass	Pass	Pass	Pass
Goldsmiths, University of London	-	60-70%	60-70%	60-70%
Keele University	*60-70%	*60-70%	*60-70%	*60-70%
Kingston University	*60-70%	*60-70%	*60-70%	*60-70%
Loughborough University	70% or above	70% or above	70% or above	70% or above
Manchester Metropolitan University	60-70%	60-70%	60-70%	60-70%
Middlesex University	50-60%	50-60%	50-60%	50-60%
Newcastle University London	-	70% or above	70% or above	-
Northumbria University	50-60%	50-60%	50-60%	50-60%
Queen Mary, University of London	*60-70%	*60-70%	*60-70%	-
Regent's University London	*50-60%	*50-60%	*50-60%	*50-60%
SOAS, University of London	*60-70%	-	-	-
Swansea University	-	*50-60%	*50-60%	-
University of Brighton	50-60%	50-60%	50-60%	50-60%
University of Dundee	*50-60%	*50-60%	*50-60%	*50-60%
University of Essex	*60% or above	*60% or above	*60% or above	*60% or above
University of Kent	*60-70%	*60-70%	*60-70%	*60-70%
University of Lincoln	*50-60%	*50-60%	*50-60%	*50-60%
University of Sussex	*60-70%	*60-70%	*60-70%	*60-70%
University of Westminster	50-60%	50-60%	50-60%	60-70%
University of the West of England Bristol	*50-60%	*50-60%	*50-60%	*50-60%

* Previous educational performance and personal statements may be considered in your university admission by some universities

Improve your English language skills to prepare for further academic study

Start date

16 weeks: Aug
1-4 terms: Sep, Jan, Apr or Jun

English language entry requirements

From: IELTS 4.0

Age requirement

16 years and above

Class size and hours

Maximum of 16 students
25 hours per week minimum

EN Academic English

> For students who need to increase their IELTS level in order to progress to university. This intensive course offers rapid progress of up to one IELTS band per term in order to progress to your INTO pathway course or for entry to some universities.

Course features

- You will learn through face-to-face teaching and online learning to communicate effectively in English and improve your reading, writing, speaking and listening skills.
- A diverse social programme and effective academic content will help you to develop fluency and confidence.
- Access INTO's interactive online learning platform outside of class to practise your English language skills, complete tasks and engage with classmates.
- Developed in partnership with Cambridge English, the world leader in language assessment, INTO English Language Assessment (IELA) provides a standardised online assessment of all four core language skills throughout your studies. The IELA test is available to you as an additional form of assessment and allows you to choose from a wide range of Higher Education institutions.



EN General English

> For students who want to increase their confidence in using everyday English for general life, work, socialising and travel in the UK.

Special features

- Build your confidence in core English language skills in everyday situations, from speaking, reading, listening and writing to vocabulary and grammar.
- Year-round courses have flexible start dates and course lengths, from 2-48 weeks
- Study in the heart of the City of London.
- Take part in a range of activities and socialise with students from all over the world to build on your English language ability and make new friends.

Improve your English language skills for work, socialising and travel

Start date

Monthly

English language entry requirements

All English levels, from elementary to upper intermediate.

Age requirement

16 years and above

Class size and hours

Maximum of 18 students

Dates and prices

The cost of your programme may vary depending on factors including the pathway chosen and programme length. The following guide to costs is based on pricing for the current academic year and provides an indication of the cost of attendance for some of our pathways. For specific cost information, please refer online: www.intostudy.com/into-london/courses

Estimated cost of attendance based on prices for current academic year 2020-2021

Study length	Tuition	Accommodation	Books and fees	Airport pick up**	Insurance	Total
Academic programmes						
International Foundation (3 term)	£18,535	£8,262-£15,795	£390-£790	£130-£160	£357	£27,544-£35,477
International Foundation (4 term)	£20,965	£11,907-£20,940	£440-£840	£130-£160	£466	£33,778-£43,211
International Year One (3 term)	£18,535	£8,262-£15,795	£390	£130-£160	£357	£27,544-£35,077
International Year One (4 term)	£20,965	£11,907-£20,940	£440	£130-£160	£466	£33,778-£42,811
International Year One (5 term)	£20,965	£13,795-£23,015	£500	£130-£160	£466	£35,726-£44,946
Pre-Master's (2 term)	£13,385	£5,103-£9,720	£390	£130-£160	£196	£19,074-£23,691
Pre-Master's (3 term)	£18,535	£8,262-£15,795	£390	£130-£160	£357	£27,544-£35,077
English language courses						
1 term*	£4,430	£2,673-£4,455	£80	£130-£160	£122	£7,305-£9,087
16 weeks	£7,090	£4,561-£7,625	£120	£130-£160	£145	£11,916-£14,980

Start months and term dates

Academic programmes		Academic English	
June (4 term)	Mon 28 Jun 2021-Fri 24 Jun 2022	August (16 weeks)	Mon 02 Aug 2021-Fri 17 Dec 2021
September (3 term)	Mon 20 Sep 2021-Fri 17 Jun 2022	September (1 term)	Mon 20 Sep 2021-Fri 17 Dec 2021
September (4 term)	Mon 20 Sep 2021-Fri 02 Sep 2022	January (1 term)	Mon 10 Jan 2022-Fri 01 Apr 2022
January (2 term)	Mon 10 Jan 2022-Fri 17 Jun 2022	April (1 term)	Mon 11 Apr 2022-Fri 17 Jun 2022
January (3 term)	Mon 10 Jan 2022-Fri 02 Sep 2022	June (1 term)	Mon 27 Jun 2022-Fri 02 Sep 2022
April (2 term)	Mon 11 Apr 2022-Fri 02 Sep 2022		

Prices shown are for the current academic year of 01 September 2020 – 31 August 2021 and for indicative purposes only. All students who confirm their offer on or before 31 January 2021 will pay the 2020/2021 price as per their existing offer letter. After 31 January 2021, where tuition fees have increased, all current offers will be reissued and students will receive a new offer with the new 2021/2022 pricing. For full details of term dates, please visit the relevant course page at www.intostudy.com/into-london/courses

* The price will depend on your start date and length of study. Prices shown are only for one term. Vacation weeks in between terms are extra and will be charged at the weekly accommodation price.
** Please note airport pickup is optional and is not included in the total.



Apply via your local INTO educational counsellor

If you would like us to put you in contact with one of our counsellors, please contact us.



Apply online

Complete our online application form: apply.intostudy.com



Need some help with your tuition fees?

Check to see if you're eligible for a scholarship: www.intostudy.com/into-london/scholarships

Discover more online

For students:
www.intostudy.com/into-london
For education counsellors:
partnerportal.intoglobal.com/into-london

Connect with us



Through innovative partnerships with leading universities, we expand opportunities for higher education, ensuring success and transforming the lives of our students and staff.

INTO GIVING

Working across the globe, INTO Giving supports projects that increase access to education and improve the quality of teaching and learning. For more information visit www.into-giving.com

Contact us

Enquiries and applications:
ukes@intoglobal.com
or +44 1273 876040

Visit the Centre:
intolondon@intoglobal.com
or +44 203 691 5600

Centre address details:
INTO London
102 Middlesex Street
London
E1 7EZ
United Kingdom

© INTO London World Education Centre Ltd, September 2020. Every effort is made to ensure that the information provided in this document is correct at the time of publication. However, from time to time there may be occasions where some of the information has changed since the date of publication. The most up to date information can be found on our website at www.intostudy.com/into-london – please refer to this before submitting your application. If, in our opinion, we consider that any change has been made which has a material impact on any offer that has been made to you to study with us we will inform you of these changes in writing. The information provided in this document is subject to INTO London's terms and conditions which can be accessed at www.intostudy.com/into-london/terms

INTO London World Education Centre Ltd, registered number 7956509.
Registered office: One Gloucester Place, Brighton, East Sussex, BN1 4AA, UK.

Education provider sponsor number 6FY6FQBVI
(INTO London World Education Centre Ltd is a branch campus of INTO Manchester Limited)

Education counsellor's stamp