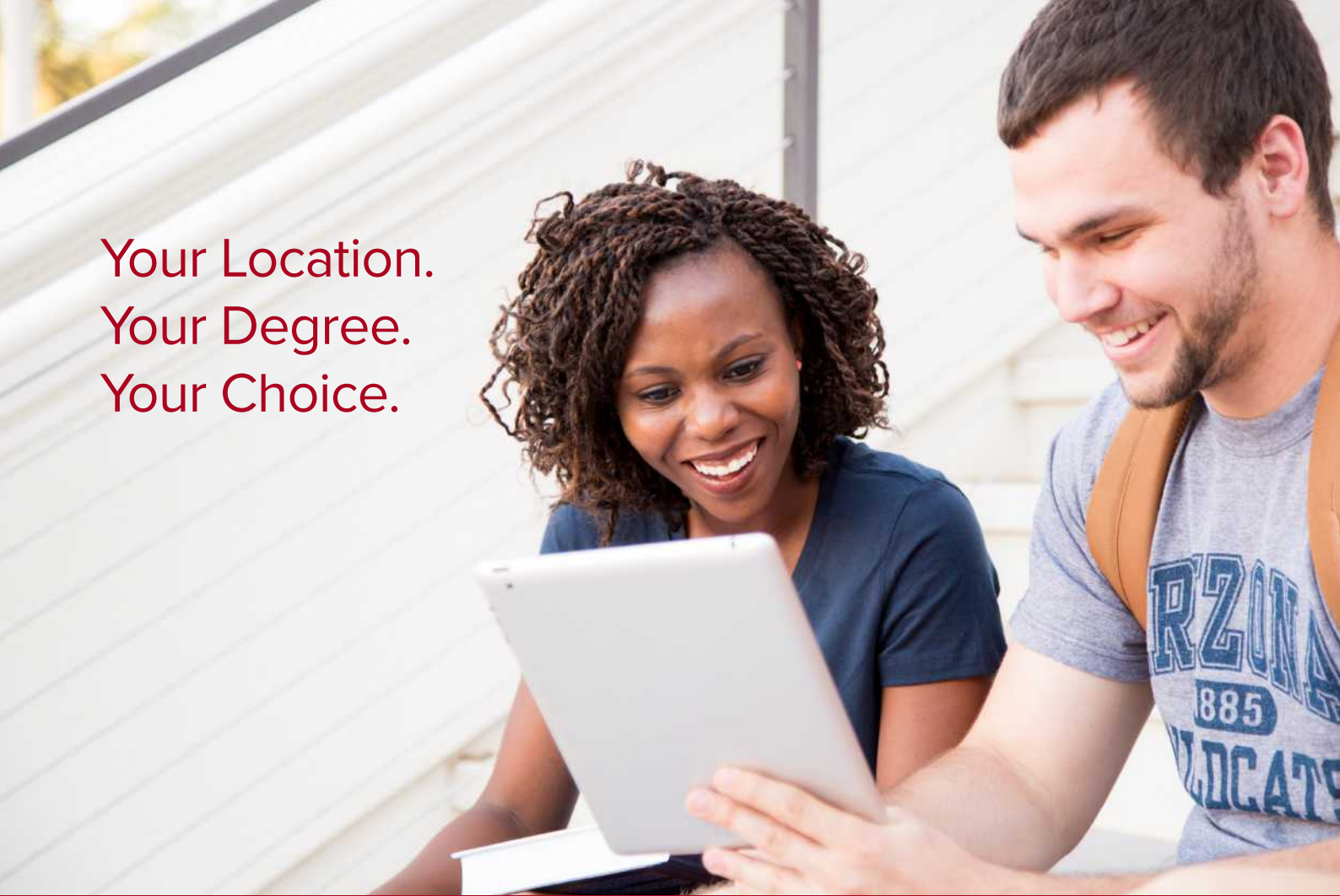


Your Location.  
Your Degree.  
Your Choice.







**#40**  
in Top Public Schools  
U.S. News & World Report 2021

**#85**  
in Best Global Universities  
U.S. News & World Report 2021

## Why Choose the University of Arizona?



Flexibility for your future

**#11**  
Best Online Bachelor's Program  
U.S. News & World Report 2020



**#97**  
in National Universities  
U.S. News & World Report 2021

**#68** in the US overall and tied for **#28** among public universities  
Q.S. US University Rankings 2020

**#20**  
Top Public Research  
National Science Foundation 2019

**Competitive Programs in the Top 100**  
U.S. News & World Report 2020-2021

**Undergraduate**

- #4** Management Information Systems
- #23** Entrepreneurship
- #24** Marketing
- #29** Management
- #54** Best Engineering Programs

**Graduate**

- #3** Geology
- #8** Earth Sciences
- #31** Aerospace/Aeronautical/Astronautical Engineering
- #41** Chemistry
- #43** Computer Science

**Global Subject**

- #11** Space Sciences
- #29** Geosciences
- #35** Environment/ Ecology

**1 degree, 3 ways**

**With us, you can earn your degree your way. Choose from three incredible study experiences.**

- Fully online
- Fully on campus
- Start online, and then transition to our Tucson campus or another US university

**Go online. Get local support.**

If you choose to study away from home at one of our 650+ Partner Microcampuses, you can complete your UA degree while still getting the traditional on-campus experience and support of student services at a location near you.

\*subject to availability

**Online Programs in the Top 50**  
U.S. News & World Report 2020

**#3**  
Best Online Master's in Computer Information Technology Programs

**#38**  
Best Online Master's in Engineering Programs







# About the University of Arizona

From our main campus in Tucson, Arizona to our online programs or global Partner Microcampuses, we are dedicated to helping you start your academic journey from wherever you choose to learn. No matter where or how you start your studies, we can help you stay on track to complete your US degree.

As a global and national top-100 university, the University of Arizona can make a difference in your education and on your résumé. You'll learn from faculty who've received national and international awards. Your research can reach for the moon via our long-term partnership with NASA. See how we can take you to the top.

- Five state-of-the-art libraries to engage in your studies including ones specializing in science, engineering and health sciences.
- Our robust career development team and employment fairs to foster your career success.
- STEM Learning Center which facilitates institutional partnerships and access to high quality STEM experiences, resources, tools, and expertise.
- THINK TANK offers free tutoring and academic support to students on campus and online.
- Employability services including Handshake and Design Your Search.
- Fulbright scholars, Guggenheim fellowships, Nobel and Pulitzer prize winners and members of the National Academies of Engineering, Inventors and Science are all among our awarded faculty.
- \$687M in total research expenditures to fund your curiosity.



## Welcome to our home in Tucson, Arizona.

Tucson, home of the University of Arizona, is known for its Southwestern beauty. This region of the US is recognizable in films for its swirls of earthy orange rock formations and vivid candy-colored sunsets. Tourist destinations, like the Grand Canyon, are accessible by car in just over five hours.

### See yourself working in Arizona (AZ)

You might not be ready to leave Arizona when you graduate. Check out impressive STEM headquarters around the state where you can get your start.

- Raytheon:** Tucson, AZ
- Intel:** Chandler, AZ
- Honeywell:** Phoenix, AZ
- Axon:** Scottsdale, AZ
- First Solar:** Tempe, AZ
- ON Semiconductor:** Phoenix, AZ

### A UA degree today. A career tomorrow.

- 87% of undergraduates employed or enrolled in graduate studies fulltime 90 days after graduation.
- 86% of graduates employed full time at 90 days after graduation.
- 89% of employers say UA grads exceed their peers.

*"My undergraduate degree was in biomedical engineering... After I graduated with my master's in management information systems, I accepted an offer at Capital One as a senior data analyst and was then promoted to a principal data analyst, which is what I do today as part of the strategy team for small business banking."*

Rhea, Master's in Management Information  
Class of 2014

Located in the Southeast region of Arizona, Tucson offers lush outdoors and a charming, small-scale city life. Get outside to experience the local culture, heritage and annual events. National parks, historic landmarks and classic film locales can fill up your weekend plans and your camera roll. As the first UNESCO City of Gastronomy in the US, you're sure to find your new favorite restaurant right around the corner.

While Tucson stays sunny year-round, you can easily take a day trip to see snow and ski in the winter. In the spring, drive out to Phoenix for the all-American experience: spring training for major league baseball. To cool off from the summer heat, you can take a trip out to Lake Havasu or find a swimming hole in Sedona.

The endless desert sunshine extends to the community of warm and welcoming people. When you come to the University of Arizona, you're joining the diverse population of students, professors and professionals that call Tucson home.

### Continue your career with OPT

Optional Practical Training allows international students who hold an F-1 visa status to take part in professional or temporary employment that is directly related to the student's area of study, before or after they have graduated. With a STEM program, you can extend your OPT for two years for a total of three years working in the US.





# Customize your degree program

Study on our main campus, complete your degree fully online, or start your degree online and then transition to our main campus. If you decide you want to transfer your credits to another university, you can also apply your UA credits elsewhere. Wherever you want to end up in your academic and professional career, we can guide you to a program to take you there.

## 1. Complete your degree at the University of Arizona Campus

- Join us on campus in the US, taking advantage of a wider range of facilities, support, and housing options.
- Study a broad range of subjects and engage in research, internships, or CPT during your academic studies.
- Be part of a vibrant student community of 45,000 students who call UA their home.
- Explore Arizona's diverse geography, travel to the beaches of California just three-hours flight away, or simply enjoy a barbecue with friends in one of our communal recreational areas on campus.

## 2. Start and finish your whole University of Arizona degree online

- Earn a degree from a world top-100 US university without leaving your home country.
- Benefit from lower tuition fee costs.
- Pick from an extensive range of majors; 50+ are available fully online.
- Choose to add on in-country services including campus study locations, housing and academic support.\*

\*Subject to availability. Please see page 7 for more information on local support at our Partner Microcampuses.

## 3. Enroll in our Customized Degree Path

- The Customized Degree Path allows you to start your degree online and transition to the main campus in Tucson when you are ready\*.
- Benefit from a lower tuition fee and reduced costs while studying online which can help to make your overall degree studies more affordable.
- Receive support via both UA's THINK TANK tutoring services and your UA Academic Advisor to ensure that you remain on track with your studies.
- Choose to add on in-country services including campus study locations, housing and academic support.\*\*

\* Undergraduate students can study online for 1-4 semesters before transitioning to Tucson. Graduate students can study up to 12 credits before transition to Tucson.

\*\* Subject to availability

## Other study options:

- Enroll with non-degree seeking status online at either the undergraduate or graduate level which allows you to explore a wider range of subjects or complete prerequisite credits needed for admission to your chosen program.
- Take advantage of the 'Study Arizona' semester, where students enrolled online can travel to the US for a full semester of study in Tucson. You'll get the US university experience for one semester while paying online tuition fees.
- Enroll into a graduate certificate online to master specialist skills within your field of interest.



# See the value of a UA degree

Whether you pursue your degree at our Main Campus, online, or a mix of both, the University of Arizona offers affordable tuition options to put a U.S. degree within your reach.

## Main Campus Scholarships

You will be considered for Main Campus scholarships whether you start your degree in Tucson or if you begin online and transition to the Main Tucson Campus later. These scholarships reduce the cost of tuition for full time undergraduate study. Graduate scholarships vary by program of study.

## Affordable Tuition Rates for Online Study

Whether you start your degree online through a Customized Degree Path or you complete your full degree online, your tuition will be priced by the credit hour, tailored to the country in which you will study.

## Study Abroad Savings

If you are completing your full undergraduate degree online, you can spend a semester at our Main Campus at your online tuition rate.



## Online study support



Same teachers and classes as on-campus study



THINK TANK tutoring services



Academic success specialists



Alumni mentors



Online student events

## Our microcampus experience: Make the most of our global connections

Through our network of 650+ Partners around the world, also known as Microcampuses\*, we offer a range of optional services to enhance your study experience. You may be surprised to find one in a city near you.

Microcampuses offer a taste of university life for students who have chosen to study their UA degree online. Some are full university campuses where you can take advantage of resources like computer labs, libraries, and student accommodation. Others are co-working spaces equipped with high-speed internet and other facilities to enrich your study experience. So you can get the best of college life from wherever you're most comfortable.

\* In most cases there will be additional costs above your UA tuition fees if you choose to opt into the services of a Microcampus.

## Why apply with INTO?

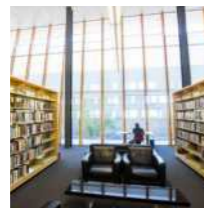
INTO partners with the University of Arizona to support international students like you through the application process. Studying abroad can be a daunting prospect, but our expert enrollment advisors will help you get there feeling confident and assured that you're making a great decision.





# Living and learning experience with the University of Arizona

Whether you study at our campus in Tucson, one of our 650+ Global Microcampus Partners or from the comfort of your home, you will get the UA student experience.



## On-campus or off campus: the choice is yours

In Tucson, you can live and learn among your peers, and take advantage of on-campus libraries, gyms and restaurants. You'll find a variety of housing options available so that you can choose a student life that suits you. All incoming UA students can pick from an extensive range of options, either on or off campus – there is no requirement for first-year students to live on campus.

### Differences between on-campus and off-campus living:

On-campus	Rent includes	On-campus transport available	Close to class	Live with a roommate	Be at the heart of university life
	<ul style="list-style-type: none"> <li>• Utilities</li> <li>• Furniture</li> <li>• Cable</li> <li>• Wi-Fi</li> </ul>	– no car required	– save travel time	(option to select your own or have roommate assigned)	
Off-campus	Rent excludes:	Transport to class required	Locations vary	Choose your own living situation	Have a more independent university life
	<ul style="list-style-type: none"> <li>• Utilities</li> <li>• Furniture</li> <li>• Cable</li> <li>• Wi-Fi</li> </ul>		– factor travel time into your plans		

### Housing costs

With 23 on-campus dorms and an extensive variety of off-campus housing to choose from, there's something to suit every budget. For the latest information about housing types, costs and availability visit check these websites.

**On campus:** <https://housing.arizona.edu>

**Off campus:** <https://offcampus.arizona.edu>

### Meal plans

The university has a variety of meal plans available, whether you choose to live on or off-campus. Opting for a meal plan allows you to plan your food budget in advance, and gives you generous discounts based on the type that you select. From a Wildcat Gold package which allows for three meals per day plus snacks, to the flexible Commuter option designed for those who want to eat off campus more often, you'll always find something delicious to eat at or near UA!

### A global student living experience

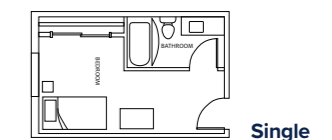
At the University of Arizona, we believe in doing things a little differently. By providing a number of ways for you to start your studies, we can open the door to your dream program on campus or online.

To enhance your experience as a UA Global student, we have developed more than 650 partnerships globally. Our Microcampus partners range from co-working spaces, to full university campuses which offer access to library and study spaces as well as university housing to provide you with the independence that comes from living away from home, without traveling quite as far as Tucson.

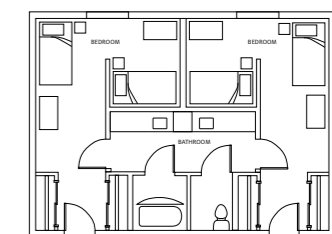
These additional facilities, which are subject to availability and additional costs, can provide a vibrant student community in your home country, so you can make friends and to build local connections.

### Example Floor Plans

Floor plans are not guaranteed accurate. See Housing website for details.



Single



Double Suite



Explore your choices for a global living experience at: <https://everywhere.arizona.edu/global-experience>



# Discover your dream degree at UA

From becoming a Fortune 500 CEO to exploring the final frontier, our programs are built not just to prepare you for your career, but to push you forward in your industry.

## Engineering



### #54 Undergraduate Engineering Programs

*U.S. News & World Report 2021*

### #38 Online Master's in Engineering

*U.S. News & World Report 2020*

### #63 Graduate Engineering Programs

*U.S. News & World Report 2020*

- Our 130+ tenured faculty are engineering experts in areas ranging from water and energy sustainability to cybersecurity to medical sensors and artificial body parts.
- Strong industry ties and our vision to become one of the top 10 US public engineering institutions and a global leader in technology means that we are focused on helping our students and 300,000+ alumni land jobs with top companies around the world.
- Engineering students may go on to become astronauts, CEOs, professors, mine site managers and city administrators. We watch our graduates start their own high-tech companies to create robots, computer software, wireless medical devices and solar power systems

## Business



Undergraduate programs ranked in the top 50 by *U.S. News & World Report 2021*

### #4 Management Information Systems

### #24 Marketing

### #23 Entrepreneurship

### #29 Management

### #32 Business Programs

### #38 Accounting

- 90% of undergraduates complete internships
- Average starting salary for business school graduates: \$56,172

**UA connections go beyond your academics. By graduation, our alumni report 91% job placement and a \$67,000 starting annual salary. You might enroll as a student, but you will leave our institution as a leader.**



## Astronomy and Physics



### #11 Space Science (Global Subject)

*U.S. News & World Report 2020*

### #10 Graduate Atomic/Molecular/Optical Physics

*U.S. News & World Report 2020*

### #31 Graduate Aerospace/Aeronautical Engineering

*U.S. News & World Report 2020*

### #37 Graduate Physics

*U.S. News & World Report 2020*

- As a longstanding NASA partner, it's no surprise we are ranked the No.6 university in NASA-funded activity by the *National Science Foundation 2019*
- UA is ranked No.1 in astronomy and astrophysics expenditures and in the top 4% of all US universities in research and development expenditures *National Science Foundation 2019*

## Computer Science



### #52 Undergraduate Computer Science

*U.S. News & World Report 2021*

### #3 Online Master's in Computer Information Technology

*U.S. News & World Report 2020*

### #43 Graduate Computer Science

*U.S. News & World Report 2020*

Your curiosity will not just be encouraged, but empowered with our research portfolio of 100 projects and annual expenditure of \$32M. NASA, the Department of Defense, Department of Energy, National Institutes of Health, and the National Science Foundation, Raytheon and Boeing are just a snapshot of who invests in UA research.



# Explore UA's world-changing discoveries

The US Department of Labor estimates that today's learners will have between 10-14 jobs by the time they turn 38, meaning there is a growing demand for graduates who can demonstrate innovation, flexibility and multidisciplinary skills within the workforce.

Now more than ever, thinking a few steps ahead isn't just strategic, it's a necessity. We're in a time and place when planning ahead is crucial to navigating our new normal.

We've entered a unique period where we can reinvent our way of life to improve systems, reach new heights, and create the technology to solve tomorrow's challenges. At UA, innovation has always been at the center of our research.



### UA Center for Innovation

- The University of Arizona Center for Innovation (UACI) is designed to provide advising, resourcing and networking to startups with locations across the Southern Arizona region.
- By connecting startups to the University of Arizona, the UACI serves as a bridge between you and tech tycoons. The result of this relationship: high-paying jobs and fueling Southern Arizona's economy.
- For nearly two decades the UACI has advanced innovation and entrepreneurship by joining people, programming and a controlled environment to launch successful companies and products.

### From invention to product: how Tech Launch Arizona turns research into business.

- UA's Tech Launch Arizona turns the work of faculty, researchers and graduate students into commercial products.
- Tech Launch Arizona protects, analyzes and commercializes discoveries by directing them to licensing options, connecting researchers to industries and transforming inventions into intellectual property.

### UA Tech Park

- The Tech Park partners with companies that specialize in advanced energy; arid lands agriculture and water; health and biosciences; defense and security; Intelligent transportation systems and smart vehicles; sustainable mining; and, cross-cutting sectors of informatics, sustainability, and imaging.
- The Park is one of the region's largest employment centers
  - Park tenants contribute \$1.7 billion annually to the regional economy.
  - The park generates \$50 million annually in state and local taxes.

### The Sky is not the limit with UA NASA projects. Take a look at a few ways we contribute to NASA's groundbreaking research.

- Our moon researchers worked with NASA to accomplish Apollo 12's pinpoint landing.
- Two of our researchers were involved in NASA's Parker Solar Probe mission.
- The UA NASA space grant program is a fellowship that accepts six graduate students per year to promote space-related research to the public.
- We are currently working and in plans to construct a space-based infrared telescope that could help NASA track asteroids and comets that are threatening to life on Earth.

*"The research enterprise at the University of Arizona has life-improving results on a global scale. From exploring the deepest corners of our solar system to solving the issues we face on Earth; University of Arizona students and faculty are at the forefront of some truly groundbreaking discoveries."*

UA President Robert C. Robbins



# Academic Programs

LEGEND: + = stem u = undergraduate g = graduate z = undergraduate and graduate

PROGRAM	Undergraduate	Graduate	On-campus	Global/Online
<b>College of Agriculture and Life Sciences</b>				
<b>Agribusiness Economics and Management</b> [B.A. emphases: Agribusiness Management, Agricultural Economic]	B.S.			u
<b>Agricultural and Resource Economics</b> [M.S.: Applied Econometrics and Data Analytics, Applied Economics and Policy Analysis]		M.S.		g
<b>Agricultural Education</b> [M.Ag.Ed. Career and Technical Education, Practitioner] [M.S. emphasis: Professional Agriculture, Research]		M.Ag.Ed./M.S.		g
<b>Agricultural Technology Management and Education</b> [B.S. emphases: Agricultural Technology Management, Leadership and Communication, Teaching]	B.S.			u
<b>Animal Sciences</b> [B.S. emphases: Animal Industry, Equine, Race Track Industry, Science and Pre-professional]	B.S.	M.S.		u
<b>Biosystems Analytics &amp; Technology</b>	B.S.	M.S.		u
<b>Environmental Science</b> [B.S. on-campus Emphases: Leadership, Sustainability, and Communication; Physical and Chemical Dynamic; Soil, Air, and Water; The Biosphere Emphasis]	B.S.	M.S./PhD		z u
<b>Environmental and Water Resource Economics</b>	B.S.			u
<b>Family Studies and Human Development</b>	B.S.			u
<b>Food Safety</b>	B.S.			u
<b>Microbiology</b>	B.S.	M.S.		z
<b>Natural Resources</b> [B.S. Emphases: Conservation Biology; Ecology, Management and Restoration of Rangelands; Fisheries Conservation and Management; Global Change Ecology and Management; Watershed Hydrology and Management; Wildlife Conservation and Management] [M.S.: Ecology, Management and Restoration of Rangelands; Fisheries Conservation and Management; Natural Resources Studies; Watershed Management and Ecolhydrology; Wildlife Conservation and Management]	B.S.	M.S.		z
<b>Nutrition and Food Systems</b>	B.S.			u
<b>Nutritional Sciences</b> [B.S. on-campus emphases: Dietetics, Nutrition]	B.S.	M.S.		z u
<b>Personal and Family Financial Planning</b>	B.S.			u
<b>Planning</b>		M.S.		g
<b>Plant Pathology</b>		M.S.		g
<b>Plant Sciences</b>	B.S.	M.S.		z
<b>Retailing and Consumer Science</b>	B.S.			u
<b>Soil, Water and Environmental Science</b>		M.S.		g
<b>Sustainable Plant Systems</b> [B.S. emphases: Agronomy, Controlled Environment Agriculture, Environmental Horticulture, Fresh Produce Safety]	B.S.			u
<b>Veterinary Science</b>	B.S.			u
<b>Water, Society and Policy</b>		M.S.		g
<b>College of Architecture, Planning &amp; Landscape Architecture</b>				
<b>Architecture</b> [M.S.: Design and Energy Conservation, Emerging Building Technologies, General, Health and the Built Environment, Heritage Conservation, Sustainable Market Transformation, Urban Design]	B.A.	M.S./M.Arch.		z
<b>Landscape Architecture</b>	B.L.A.	M.L.A.		z
<b>Real Estate Development</b>		M.R.E.D.		g g
<b>Sustainable Built Environment</b> [B.S. on-campus emphases: Heritage Conservation, Sustainable Buildings, Sustainable Communities, Sustainable Communities, Sustainable Landscapes, Sustainable Real Estate Development] Urban Planning	B.S.			u u
		M.S.		g
<b>College of Education</b>				
<b>Counseling</b> [M.A.: Rehabilitation and Mental Health, School Counseling]		M.A.		g
<b>Counseling and Mental Health</b> [M.A.: Rehab Counseling, School Counseling]		M.A.		g
<b>Deaf Studies</b> [B.S.E.D. emphasis: Educational Interpreting]	B.S.E.D.			u
<b>Early Childhood Education</b>	B.A.E.			u
<b>Education Policy</b>		M.A.		g g
<b>Elementary Education</b> [B.A.E.D. emphasis: Bilingual, English as a Second Language]	B.A.E.D.			u
<b>Educational Leadership</b>		M.Ed./Ed.D.		g g
<b>Educational Psychology</b>		M.A.		g
<b>Higher Education</b>	B.A.	M.A.		g
<b>Language, Reading and Culture</b> [M.A.: Early Childhood Education]		M.A./E.D.D.		g
<b>Literacy, Learning and Leadership</b> [B.A. on-campus emphases: Community Education; Leadership for Equity, Access and Success in Education]	B.A.			u u
<b>Mild Moderate Disabilities</b>	B.S.			u
<b>Rehabilitation Studies and Services</b>	B.S.E.D.			u
<b>School Psychology</b>		E.D.S.		g
<b>Secondary Education</b> [M.Ed.: Alternative Certification, Borderland Consortium]		M.Ed.		g
<b>Special Education</b> [M.A. on-campus: Applied Behavior Analysis, Behavior Support, Deaf and Hard of Hearing, Disabilities, Learning Disabilities, Mild-Moderate Disabilities, Online, Severe and Multiple Disabilities, Visual Impairment] [M.A. online: Applied Behavior Analysis, Deaf and Hard of Hearing]		M.A.		g g
<b>Teaching and Teacher Education</b> [M.A.: Early Childhood Education, Teachers in Industry]		M.A./M.Ed.		g
<b>College of Engineering</b>				
<b>Aerospace Engineering</b>	B.S.	M.S./M.Eng.		z
<b>Architectural Engineering</b>	B.S.			u
<b>Biomedical Engineering</b>	B.S.	M.S.		z
<b>Biosystems Engineering</b>	B.S.			z
<b>Chemical Engineering</b>	B.S.	M.S.		z
<b>Civil Engineering</b>	B.S.			z

PROGRAM	Undergraduate	Graduate	On-campus	Global/Online
<b>College of Engineering and Applied Sciences</b>				
<b>Civil Engineering and Engineering Mechanics</b>		M.S./M.Eng.		g
<b>Electrical and Computer Engineering</b>	B.S.	M.S.		z z
<b>Engineering Management</b>	B.S.	M.Eng./M.S.		z
<b>Environmental Engineering</b>	B.S.	M.S.		z
<b>Industrial Engineering</b>	B.S.	M.S.		z g
<b>Innovation, Sustainability and Entrepreneurship</b>		M.Eng.		g g
<b>Materials Science &amp; Engineering</b>	B.S.	M.S.		z g
<b>Mechanical Engineering</b>	B.S.	M.S.		z g
<b>Mining Engineering</b>	B.S.			g
<b>Mining, Geological and Geophysical Engineering</b>		M.S./M.Eng.		g g
<b>Optical Sciences &amp; Engineering</b>	B.S.			u
<b>Systems Engineering</b>	B.S.	M.S./M.Eng.		z
<b>College of Fine Arts</b>				
<b>Art</b>		M.F.A.		z
<b>Art and Visual Culture Education</b> [B.F.A. emphases: Community Museum, Teaching] [M.A. global online: Art and Visual Culture Studies, Certification] [M.A. on-campus: Community and Museums]	B.F.A.	M.A.		z
<b>Art Education</b> [M.A.: Art and Visual Culture Studies, Certification, Community and Museums]		M.A.		g
<b>Art History</b>	B.A.	M.A.		z
<b>Dance</b>	B.F.A.	M.F.A.		z
<b>Film and Television</b>	B.A./B.F.A.			u
<b>Music Education</b>	B.M.			u
<b>Music</b> [B.A. emphases: Creative Studies, Integrated Studies; Musicology, Ethnomusicology, and Theory] [M.M.: Composition, Conducting, Ethnomusicology, Music Education, Musicology, Performance, Theory]	B.A.	M.M.		z
<b>Musical Theatre</b>	B.A.			u
<b>Performance</b> [B.M. emphases: Bassoon, Cello, Clarinet, Composition, Euphonium, Flute, French Horn, Guitar, Harp, Harpsichord, Jazz Studies, Oboe, Organ, Percussion, Piano, Saxophone, String Bass, Trombone, Trumpet, Tuba, Viola, Violin, Voice]	B.M.			u
<b>Studio Art</b> [B.F.A. emphases: 3D and Extended Media; 3D and Extended Media; Illustration and Design; Photography, Video and Imaging; Two-dimensional]	B.A./B.F.A.			u
<b>Theatre Arts</b> [M.F.A.: Theatre Design and Production]	B.A.	M.F.A.		z
<b>Theatre Production</b> [B.F.A. emphases: Design and Technical Production, Professional Actors Training Program]	B.F.A.			u
<b>College of Humanities</b>				
<b>Africana Studies</b>	B.A.			u u
<b>Applied Humanities</b> [B.A. emphases: Business Administration, Fashion Studies, Public Health, Spatial Organization and Design Thinking]	B.A.			u
<b>Arts, Media and Entertainment</b>	B.G.S.			u u
<b>Classics</b> [B.A. emphases: Classical Civilization, Classical Languages]	B.A.	M.A.		z
<b>East Asian Studies</b> [B.A. emphases: Chinese Culture, Chinese Language, East Asian Cultural Studies, Japanese Culture, Japanese Language]	B.A.	M.A.		z
<b>Economy and Industry</b>	B.G.S.			u u
<b>French</b> [B.A. emphases: French and Francophone, Language, Literature and Cultures]	B.A.	M.A.		z
<b>General Studies: Sports and Society Emphasis</b>	B.G.S.			u u
<b>German Studies</b>	B.A.	M.A.		z
<b>Global and Intercultural Understanding</b>	B.G.S.			u u
<b>Italian</b> [B.A. emphases: Italian Studies, Language and Literature]	B.A.			u
<b>Religious Studies</b>	B.A.			u
<b>Russian</b> [B.A. emphases: Culture Focused, Language Focused]	B.A.	M.A.		z
<b>Science, Technology, Health and Society</b>	B.G.S.			u u
<b>Second Language Learning and Educational Technology</b>		M.A.		g
<b>Spanish</b> [B.A. emphases: Hispanic Linguistics, Hispanic Literature, Spanish and Portuguese, Translation and Interpretation]	B.A.	M.A.		z
<b>Social Behavior and Human Understanding</b>	B.G.S.			u u
<b>World Literature</b>	B.A.			u
<b>James E. Rodgers College of Law</b>				
<b>Indigenous Governance</b>		M.P.S.		g
<b>Law</b> [S.J.D./L.M.M.: Indigenous Peoples Law and Policy; International Trade & Business Law]	B.A.	S.J.D./J.D./L.M.M.		z z
<b>Legal Studies</b>		M.L.S.		g g
<b>Regulatory Science</b>		Certificate		g
<b>Eller College of Management</b>				
<b>Accounting</b>	B.A./B.S.	M.Acc/M.S.		u g
<b>Business Administration</b>	B.S.			u u
<b>Business Analytics</b>		M.S.		g
<b>Business Economics</b>	B.S.			u
<b>Business Management</b>	B.S.			u
<b>Econometrics and Quantitative Economics</b>		M.S.		g
<b>Economics</b>	B.A.	M.A.		z
<b>Entrepreneurship</b>	B.A./B.S.	M.S.		z g
<b>Finance</b>	B.A./B.S.	M.S.		z

LEGEND: + = stem u = undergraduate g = graduate z = undergraduate and graduate

PROGRAM	Undergraduate	Graduate	On-campus	Global/Online
<b>+ Management Information Systems</b>	B.A./B.S.			u
<b>Marketing</b>	B.A./B.S.	M.S.		z
<b>Operations Management</b>	B.A./B.S.			u
<b>College of Medicine</b>				
<b>+ Cellular and Molecular Medicine</b> [M.S.: Medical Track]		M.S.		g
<b>+ Clinical Translational Sciences</b>		M.S.		g
<b>Emergency Medical Services</b>	B.S.			u
<b>Genetic Counseling</b>		M.S.		g
<b>+ Medical Pharmacology</b> [M.S.: Perfusion]		M.S.		g
<b>+ Medical Physics</b>		P.S.M.		g
<b>Medical Studies</b>		M.M.S.		g
<b>+ Molecular Medicine</b>		M.S.		g
<b>+ Physiology and Medical Sciences</b>	B.S.			u
<b>College of Nursing</b>				
<b>Nursing</b> [M.S.: Clinical Systems Leadership (ADN Admission), Clinical Systems Leadership (BSN Admission), Entry to the Profession, Clinical Systems Leadership] [D.N.P.: Adult-Gerontology Acute Care Nurse Practitioner, Executive Health Systems Leadership, Family Nurse Practitioner, General, Informatics, Nurse Anesthesia, Pediatric Nurse Practitioner, Psychiatric Mental Health Nurse Practitioner]	B.S.	M.S./D.N.P.		z g
<b>Nursing Informatics</b>		D.N.P.		g g
<b>College of Pharmacy</b>				
<b>+ Pharmaceutical Sciences</b> [M.S.: Drug Discovery & Development, Health and Pharm Outcomes, Non-Thesis, Pharm Econ Policy and Outcomes, Pharmacokinetics/Pharmaceutics]	B.S.	M.S.		z
<b>+ Pharmacology and Toxicology</b>		M.S.		g
<b>Mel &amp; Enid Zuckerman College of Public Health</b>				
<b>+ Environmental Health Sciences</b>		M.S.		g
<b>+ Epidemiology</b>		M.S.		g
<b>Global Health and Development</b>		Certificate		g
<b>Health Behavior Health Promotion</b>		M.S.P.H.		g
<b>Public Health</b> [B.S. on-campus emphases: Environmental and Occupational Health, Global Health, Health Promotion, Health Systems Theory and Practice, Public Health Practice, Quantitative Methods in Public Health] [M.P.H.: Biostatistics, Epidemiology, Family and Child Health, Family and Child Health Global, Health Behavior Health Promotion, Health Services Administration, Industrial Hygiene, One Health, Public Health Policy and Management, Public Health Practice, Environmental and Occupational Health]	B.S.	M.P.H./D.P.H./Certificate		z u
<b>College of Science</b>				
<b>+ Applied Physics</b>	B.S.			u
<b>+ Astronomy</b>	B.S.			u
<b>+ Astronomy and Astrophysics</b>		M.S.		g
<b>+ Atmospheric Sciences</b>		M.S.		g
<b>+ Biochemistry</b>	B.A./B.S.			u
<b>+ Bioinformatics</b> [B.S. emphases: Computer Science, Ecology and Evolutionary Biology, Molecular and Cellular Biology, Systems Biology]	B.S.			u
<b>+ Biology</b> [B.S. emphases: Biomedical Sciences, Organismal Biology]	B.S.			u
<b>+ Biostatistics</b>		M.S.		g
<b>+ Chemistry</b>	B.A./B.S.	M.A./M.S.		z
<b>+ Computer Science</b> [M.S.: Professional Science]	B.A./B.S.	M.S.		z
<b>+ Ecology and Evolutionary Biology</b>	B.A./B.S.	M.S.		z
<b>+ Economic Geology</b>		P.S.M.		g
<b>+ Geosciences</b> [B.S. emphases: Earth, Ocean, and Climate; Geology; Geophysics]	B.S.	M.S.		z
<b>+ Hydrology</b>		M.S.		g
<b>+ Hydrology and Atmospheric Sciences</b> [B.S. emphases: Atmospheric Sciences, Environmental Hydrology and Water Resources]	B.S.			u
<b>+ Hydrometeorology</b>		M.S.		g
<b>+ Mathematics</b> [B.A./B.S. emphases: Applied, Comprehensive, Computer Science, Economics and Business, Education, Life Sciences, Probability and Statistics]	B.A./B.S.	M.A./M.S.		z
<b>+ Molecular and Cellular Biology</b> [B.S. emphases: Education and Communication, Genetics and Human Health, Systems and Big Data Biology]	B.S.			u
<b>Natural Science for Teachers - Biology</b>		M.S.		g
<b>Natural Science for Teachers - Chemistry</b>		M.S.		g
<b>+ Neuroscience and Cognitive Science</b> [B.S. emphases: Cognition, Computation, Development and Aging, Language and Communication Science, Neurobiology, Philosophy of Mind]	B.S.			u
<b>+ Physics</b>	B.S.			u
<b>Psychological Science</b>	B.S.			u
<b>Psychology</b>	B.A.	M.A.		z u
<b>Speech, Language and Hearing Sciences</b>	B.S.	M.S.		z
<b>+ Statistics</b>		M.S.		g
<b>+ Statistics and Data Science</b>	B.A./B.S.	M.S.		z
<b>College of Social and Behavioral Sciences</b>				
<b>American Indian Studies</b>	B.A.	M.A.		z
<b>Anthropology</b> [B.S. emphases: Archaeological Sciences, Human Biology]	B.A./B.S.	M.A.		z
<b>Arabic</b>	B.A.			u
<b>Archival Studies</b>		Certificate		g
<b>Care, Health &amp; Society</b>	B.S.			u u
<b>Communication</b>	B.A.	M.A.		z u
<b>Creative Writing</b>	B.A.	M.F.A.		z
<b>Criminal Justice Studies</b>	B.S.			u
<b>Development Practice</b>		M.D.P.		g

PROGRAM	Undergraduate	Graduate	On-campus	Global/Online
<b>Digital Information Management</b>		Certificate		g
<b>English</b>	B.A.	M.A.		z
<b>English As A Second Language</b>		M.A.		g
<b>+ Environmental Studies</b>	B.A.			u
<b>Food Studies</b>	B.A.			u
<b>Game Design and Development</b>	B.S.			u
<b>Games and Behaviour</b>	B.A.			u
<b>Gender &amp; Women's Studies</b> [B.A. emphases: Chicana and Latina Studies, Queer, Trans and Sexuality Studies]	B.A.	M.A.		z
<b>+ Geographic Information Systems Technology</b>	B.S.	M.S.		g z
<b>Geography</b> [B.S. emphases: Geographic Information Science, Physical Geography, Water, Environment and Society]	B.A./B.S.	M.A.		z
<b>Global Studies</b> [B.A. emphases: Global Cultures - Literature, Arts, and Film; Global Health and Development; Global Political Economy and Institutions; Global Societies - Human Rights, Migrations, and Social Movements]	B.A.			u
<b>History</b>	B.A.	M.A.		z u
<b>Human Language Technology</b>		M.S.		g g
<b>Human Rights Practice</b>		M.A./Certificate		g
<b>+ Information</b>		M.S.		g
<b>+ Information Science and Esociety</b>	B.A.			u u
<b>+ Information Science and Arts</b>	B.A.			u
<b>+ Information Science and Technology</b>	B.S.			u
<b>International Security</b>		M.A./Certificate		g g
<b>Journalism</b> [B.A. emphases: Broadcast Journalism, Digital Journalism, General Journalism, Global Journalism] [M.A.: Digital Journalism, Digital Journalism, Science and Environmental Journalism]	B.A.	M.A.		z
<b>Judaic Studies</b>	B.A.			u
<b>Latin American Studies</b>	B.A.	M.A.		u
<b>Legal Information and Scholarly Communication</b>		Certificate		g
<b>Library and Information Science</b>		M.A.		g g
<b>Linguistics</b> [B.A. emphases: General Linguistics, Linguistics and Languages] [M.A.: Native American Linguistics and Languages]	B.A.	M.A.		z
<b>Medical and Community Health Information</b>		Certificate		g
<b>Mexican American Studies</b>	B.A.	M.S.		z
<b>Middle Eastern and North African Studies</b>	B.A.	M.A.		z
<b>Persian and Iranian Studies</b>		M.A.		g
<b>Philosophy</b> [B.A. emphases: Ethics]	B.A.	M.A.		z u
<b>Philosophy, Politics, Economics and Law</b>	B.A.			u
<b>Political Science</b> [B.A. emphases: American Politics, Comparative Politics, Foreign Affairs, Ideas and Methods, International Relations, International Relations, Law and Public Policy]	B.A.			u
<b>Professional and Technical Writing</b>	B.A.			u
<b>Professional GIS Technology</b>		Certificate		g
<b>Public Administration</b>		M.P.A.		g
<b>Public Management and Policy</b>	B.S.			u
<b>Public Policy</b>		M.P.P.		g
<b>Rhetoric, Composition and Teaching of English</b>		M.A.		g
<b>Sociology</b>	B.A.	M.A.		z
<b>Studies of Global Media</b>	B.A.			u
<b>Teaching English as a Second Language</b>		M.A./Certificate		g g
<b>Urban and Regional Development</b>	B.S.			u
<b>Graduate Interdisciplinary Programs</b>				
<b>+ Applied Biosciences</b> [P.S.M.: Controlled Environmental Agriculture, Diagnostic Laboratory Sciences, Industrial Microbial Biotechnology, Medical and Diagnostic Laboratory Sciences, Medical Microbiology and Immunology, Sustainable Bioeconomy and Bioenergy, Molecular and Cellular Biology]		P.S.M.		g
<b>Applied Intercultural Arts Research</b>		M.A.		g
<b>+ Applied Mathematics</b>		M.S.		g
<b>+ Entomology and Insect Science</b>		M.S.		g
<b>+ Genetics</b>		M.S.		g
<b>+ Physiological Sciences</b>		M.S.		g
<b>Undergraduate Customized Degree</b>				
<b>Applied Sciences</b>	-			
<b>Applied Technology</b>	-			
<b>Business and Management</b>	-			
<b>Consumer Science</b>	-			
<b>Engineering</b>	-			
<b>Environment and</b>				



# Undergraduate and Graduate Admissions



Whether you decide to study on campus or online, we have options for you. Join us on campus to study in person and enjoy all the facilities that our campus offers. If you decide to join us online, you'll be able to finish your degree fully online or transition to campus later.

**Main Campus:** Start and finish your degree on campus.

**Global Online:** Complete your entire degree online with in-country services including campus study locations, housing and academic support.

**Customized Degree:** Start your degree online and decide later you want to complete your degree on campus or online.

**Entry Requirements:** Main Campus, Global Online and Customized Degrees

Entry Requirements	Undergraduate	Graduate
<b>Program Requirement</b>	<ul style="list-style-type: none"> <li>High School Diploma</li> <li>3.0 GPA</li> <li>3.5 GPA for Engineering – Pre-calculus and physics with “C” grades or better</li> <li>3.7 GPA Pre-nursing (transfer 3.5 GPA)</li> <li>2.5 for transfer students with at least 12 transferable credits</li> </ul>	<ul style="list-style-type: none"> <li>Recognized bachelor’s degree</li> <li>GPA 3.0 for Graduate Degrees</li> <li>GPA 2.75 for Graduate Certificates*</li> <li>GMAT/GRE may be required, depends on program</li> </ul> <small>*online only</small>
<b>TOEFL</b>	70 (79*)	79
<b>IELTS</b>	6.0 (6.5*)	IELTS 7.0 (no subscores below 6.0)
<b>CEPT</b>	100 (110*)	110

\*For engineering, business, nursing and SBS Law

**Start Dates:** Main Campus, Global Online and Customized Degrees

Undergraduate Global Online and Customized degrees			
<b>Spring A</b>	Jan 2021	<b>Spring B</b>	Mar 2021
Graduate Global Online degrees <i>(a select number have Spring B starts)</i>			
<b>Spring A</b>	Jan 2021	<b>Spring B</b>	Mar 2021
Main Campus			
<b>Spring A</b>	Jan 2021		

Note: only a select number have Spring B starts

## Scholarships

Scholarships	Eligibility	Requirements	Award Amount (per academic year)	Terms and Conditions
UA Global Undergraduate Scholarships	Full-time enrollment	3.0 GPA	up to \$9,000	Renewable Annually
UA Global Graduate Scholarships	Full-time enrollment	3.0 GPA	up to \$6,000	Renewable Annually
Tucson Undergraduate Freshman Scholarships (Wildcat Award)**	Full-time enrollment	GPA only - 3.25 GPA + SAT - 2.75; 1100 SAT or 22ACT	\$2,000-\$20,000	Renewable Annually; for Spring only
Tucson Undergraduate Transfer Scholarships (Wildcat Award)**	Full-time enrollment	Minimum 36 credit hours with 3.5 GPA	\$5,000-12,000	Renewable Annually
Tucson Graduate Scholarships	Full-time enrollment	Varies by department	Varies by department	Varies by department

\*\* Scholarships currently under review. Revised requirements and award amounts will be published soon.

Please Note: The fees listed above are approximate and subject to change. For most current fees, please refer to the following links:

- Undergraduate Main Campus Fees
- Graduate Main Campus Fees

## Estimated Cost of Attendance 2020-21

### Global Online

	Undergraduate Customized Degree	Undergraduate Online Degree	Graduate Online Degree/Certificate
Tuition	<b>\$15,000</b>	<b>\$15,000</b>	<b>\$15,000</b>
Book & Supplies	\$400-500	\$400-500	\$400-500
Micro-campus (optional fees)	Housing and meals are available at selected microcampuses. Costs will vary.		
<b>Total Expenses</b>	<b>\$15,400-\$15,500</b>	<b>\$15,400-\$15,500</b>	<b>\$15,400-\$15,500</b>

\*\*The \$95 application fee for Global Online Experience only (aka Global Direct) for Fall 2020 and Spring 2021 will be waived. \$95 will be in effect for Summer 2021 and beyond.

### Tucson Campus

	Undergraduate	Graduate
Tuition	<b>\$36,600</b>	<b>\$33,800</b>
Room & Board	\$13,350	\$12,700
Book & Supplies	\$800	\$1,200
Other (Insurance, Travel, etc.)	\$3,750	\$9,290
<b>Total Expenses</b>	<b>\$54,500</b>	<b>\$56,990</b>







## THE UNIVERSITY OF ARIZONA

### **The University of Arizona**

Tucson, AZ 85721

**T:** 520-621-7524

**E:** [international@email.arizona.edu](mailto:international@email.arizona.edu)

### **VIRTUAL CAMPUS TOUR**

Take a campus tour from home with The University of Arizona  
virtual tour at [www.youvisit.com/arizona](http://www.youvisit.com/arizona)

### **Discover more online**

#### **For counselors:**

<https://partnerportal2.intoglobal.com/en/catalog/universities/the-university-of-arizona>

<https://partnerportal2.intoglobal.com/en/catalog/universities/the-university-of-arizona-global>

**E:** [uoaadmissions@intoglobal.com](mailto:uoaadmissions@intoglobal.com)

#### **For students:**

[www.intostudy.com/the-university-of-arizona](http://www.intostudy.com/the-university-of-arizona)

[www.intostudy.com/the-university-of-arizona-global](http://www.intostudy.com/the-university-of-arizona-global)

### **Find us on:**

[www.facebook.com/uarizona](https://www.facebook.com/uarizona)

[www.instagram.com/uarizona](https://www.instagram.com/uarizona)

[twitter.com/uarizona](https://twitter.com/uarizona)

[www.youtube.com/user/Arizona](https://www.youtube.com/user/Arizona)

## HOW TO APPLY

**Apply via your local educational counselor**

**Apply online** - Complete our online application form:

Undergraduate Programs: **[apply.intostudy.com](http://apply.intostudy.com)**

Graduate Programs: **[everywhere.arizona.edu](http://everywhere.arizona.edu)**

